



## WORKS NOTIFICATION

### ST KILDA ROAD WORKS - DOMAIN PRECINCT MARCH 2018

Major works on the Metro Tunnel are underway to support construction of the new Anzac Station which will bring trains to the Domain Precinct for the first time.

#### Works happening in March 2018

##### Works on St Kilda Road

- Site establishment
- Tree removal
- Road and tram realignment works
- Tram wire installation
- Geotechnical investigations and soil sampling.

##### Ongoing works in the Domain Precinct

- Drainage works on Bowen Crescent until mid-April
- Drainage works on Kings Way until mid-April
- Road and tram realignment.

For further information on these works, please see the construction information overleaf or visit [metrotunnel.vic.gov.au](http://metrotunnel.vic.gov.au).


#### When

##### Day works

- 7am - 6pm, Monday to Friday
- 7am - 5pm Saturdays.

#### NIGHT WORKS

##### ST KILDA ROAD

- Monday 12 March to Friday 23 March (for up to five nights in this time) 
- 7pm - 6am
- Asphalt profiling and kerb works are required to remove the road surface
- These works will be undertaken progressively between Government House Drive and Bowen Crescent for up to five nights.

##### KINGS WAY

- Monday 12 March to Monday 19 March 2018
- Monday 26 March to Monday 9 April 2018
- 6pm - 7am, Monday to Friday
- Works are continuing to connect new drainage under St Kilda Road between Bowen Crescent and Domain Road to the existing drainage beneath Kings Way.

##### ST KILDA ROAD TRAM WORKS

- Saturday 10 March - Monday 26 March
- 7pm - 6am
- Works on the tram poles to connect overhead wires with the existing power supply will be undertaken overnight to avoid disruption to tram services.





## What we are doing

### Site establishment

Site establishment works include:

- Hoarding and temporary fencing around Edmund Herring Oval
- Installation of concrete barriers, hoarding and fencing around works sites on St Kilda Road and Albert Road Reserve
- Installation of site sheds and amenities within site compounds

- Tree removals are continuing on St Kilda Road, as per the notification issued on 1 February 2018
- Further tree removals will be required in April, the community will be notified ahead of these works.

### Preliminary road and tram realignment works

Works to prepare for the temporary diversion of road traffic, trams, cyclists and pedestrians around the Anzac Station construction site include:

- Road profiling to excavate road surface

- Earthworks to construct a new alignment for St Kilda Road
- Tram wiring and overhead works
- Delivery of tracks to site, welding and placement into new location
- Kerb and road realignment works will also continue near Government House and Anzac Avenue.

### Geotechnical investigations and soil sampling

Geotechnical investigations and soil sampling works are continuing in the Domain precinct to assess ground and environmental conditions. Site investigations are scheduled to conclude in March 2018. These works include:

- Use of non-destructive drilling and drill rigs to install groundwater monitoring wells
- Collection of soil samples to understand quality of soil.

### Asbestos Removal

A 70m length of asbestos pipe was uncovered under the southbound lane of St Kilda Road during recent service relocation works.

Under expert advice, the material was immediately contained and assessed. CYP implemented its asbestos management plan to isolate the material ahead of its safe removal. At no time has the material created a health or safety risk to the public or workers; external specialists identified the asbestos as non-airborne.

The asbestos will be safely removed and disposed of in accordance with strict statutory requirements by licensed experts.

Asbestos was regularly used in many pipes and construction materials until the 1980s, so incidents such as this are not uncommon nor unexpected. Procedures for managing discoveries are well established and proven.

### Ongoing works update

#### Drainage works

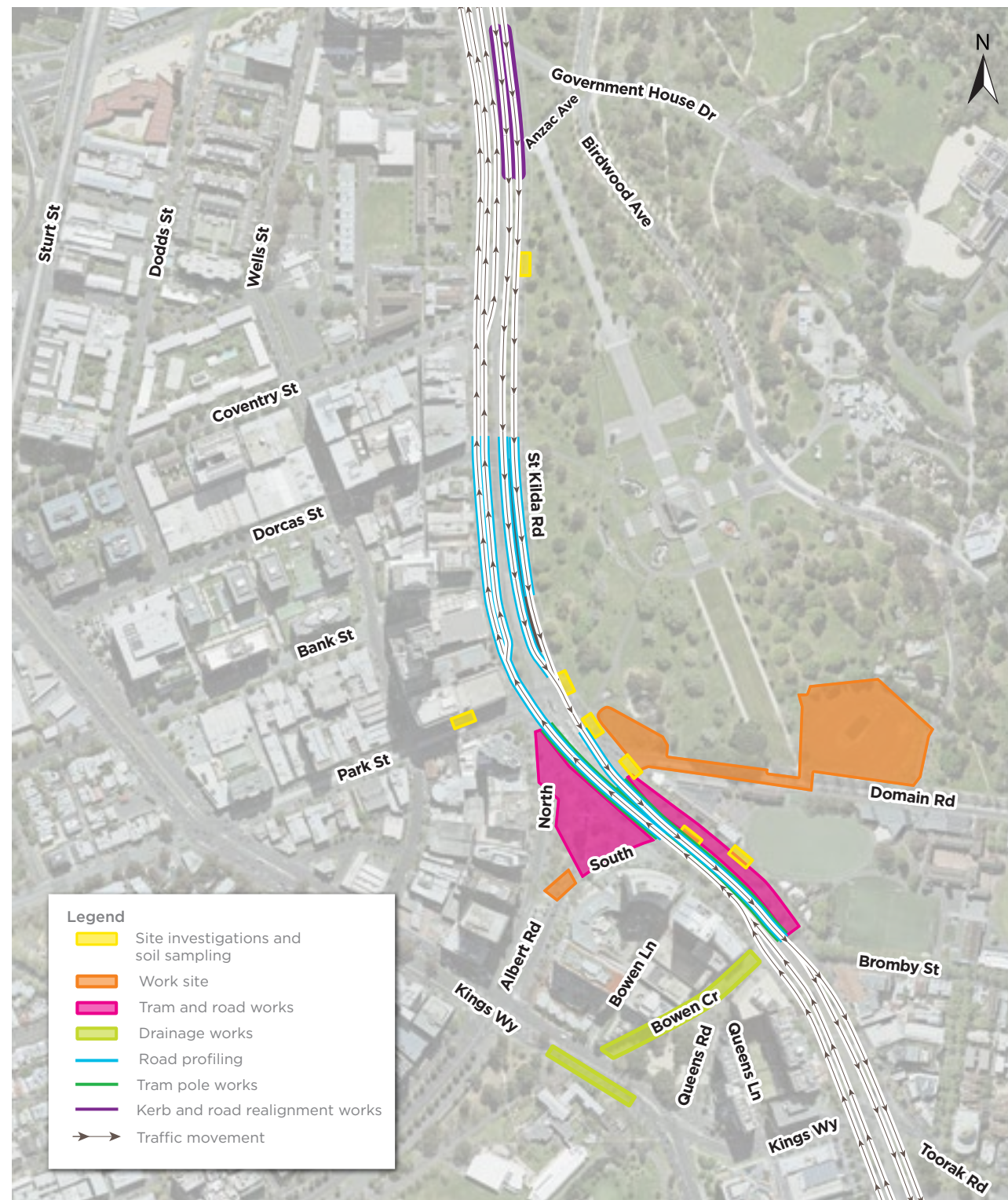
- Works to install drainage beneath St Kilda Road (between Domain Road and Bowen Crescent) and beneath Bowen Crescent are continuing
- This involves the excavation of a shaft at the Kings Way end of Bowen Crescent (day works)
- These works will also require the closure of lanes on Kings Way in order to access existing pits and therefore need to be undertaken at night
- Works to tie in the new water main to the existing water main on the corner of Albert Road and St Kilda Road are now complete.

#### Moray Street bike path

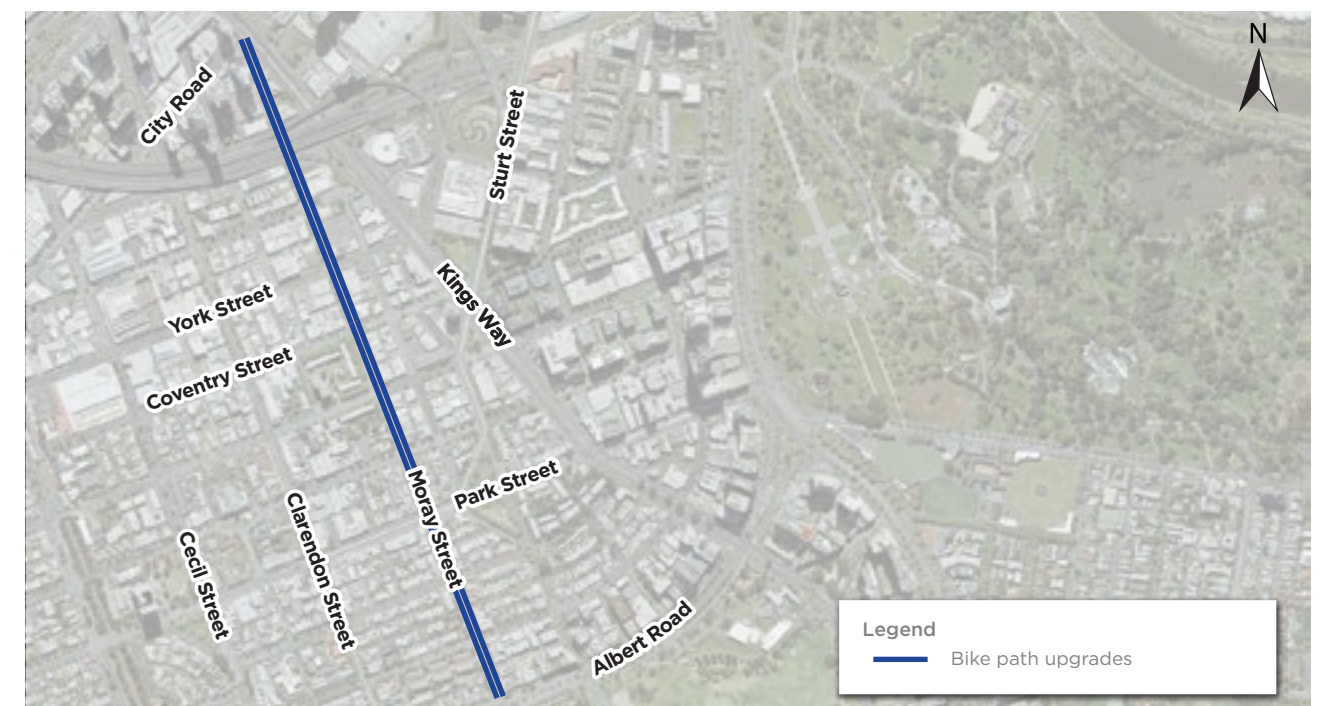
- The Moray Street bike path upgrade will take place from Monday 26 February - late April 2018. These works will occur 7am - 6pm, Monday to Friday and 7am - 1pm, Saturdays. Night works may occur and the community will be notified in advance. A staged approach to construction will minimise disruption.

#### What to be aware of during March

- A truck mounted elevated work platform and scissor lift will be used to install tram overheads
- Tram pole overhead wiring installation is expected to generate low levels of noise
- Asphalt works need to be undertaken at night when there are fewer vehicles on the road. These works will generate a high level of noise.



Indicative only



Indicative only





### Changes to the road network

Ongoing works on Kings Way will improve the traffic flow, efficiency and safety of the road network for vehicles, while St Kilda Road is reduced to one lane in each direction.

### Traffic impacts

- St Kilda Road is now reduced to one lane in each direction between Dorcas Street and Toorak Road West
- Domain Road will remain closed from St Kilda Road to the western edge of Edmund Herring Oval for approximately five years
- For more detailed information on transport changes in the Domain precinct from January to April 2018, including changes to Albert Road, Bowen Lane and Bowen Crescent, please refer to the Transport Changes brochure or visit [metrotunnel.vic.gov.au](http://metrotunnel.vic.gov.au)

### Upcoming works in April

Major works will be undertaken day and night from 1-18 April in Park Street and St Kilda Road, to realign the tram track and road to create space to build the new Anzac Station.

Buses will replace route 58 trams from 1 - 17 April and all trams on St Kilda Road from 5 - 17 April.

Further details about these works will be issued to the community in the April works notification.

### Know your travel options

During periods of increased disruption consider your travel options. For more information to help with your journey visit [metrotunnel.vic.gov.au/construction/your-journey](http://metrotunnel.vic.gov.au/construction/your-journey)



### More information

To find out more about the Metro Tunnel Project and register for future email updates:

- [metrotunnel.vic.gov.au](http://metrotunnel.vic.gov.au)
- 1800 105 105 (24 hours a day, 7 days a week)  
Press 2 and follow the prompts
- [facebook.com/metrotunnel](https://facebook.com/metrotunnel)
- Subscribe to eNews or construction notification emails: [metrotunnel.vic.gov.au/subscribe](mailto:metrotunnel.vic.gov.au/subscribe)



**Interpreter Service**  
**(03) 9280 0700**

Arabic	العربية	Russian	Русский
Cantonese	廣東話	Serbian	Српски
Greek	Ελληνικά	Sinhalese	සිංහල
Italian	Italiano	Spanish	Español
Korean	한국어	Turkish	Türkçe
Macedonian	Македонски	Vietnamese	Tiếng Việt
Mandarin	普通话		

It should be noted that this information is current at the time of printing, however due to unforeseen circumstances, changes may occur. Please visit [metrotunnel.vic.gov.au](http://metrotunnel.vic.gov.au) for the latest updates.



Authorised and published by the Victorian Government, 1 Treasury Place, Melbourne.

