



DOMAIN COMMUNITY REFERENCE GROUP

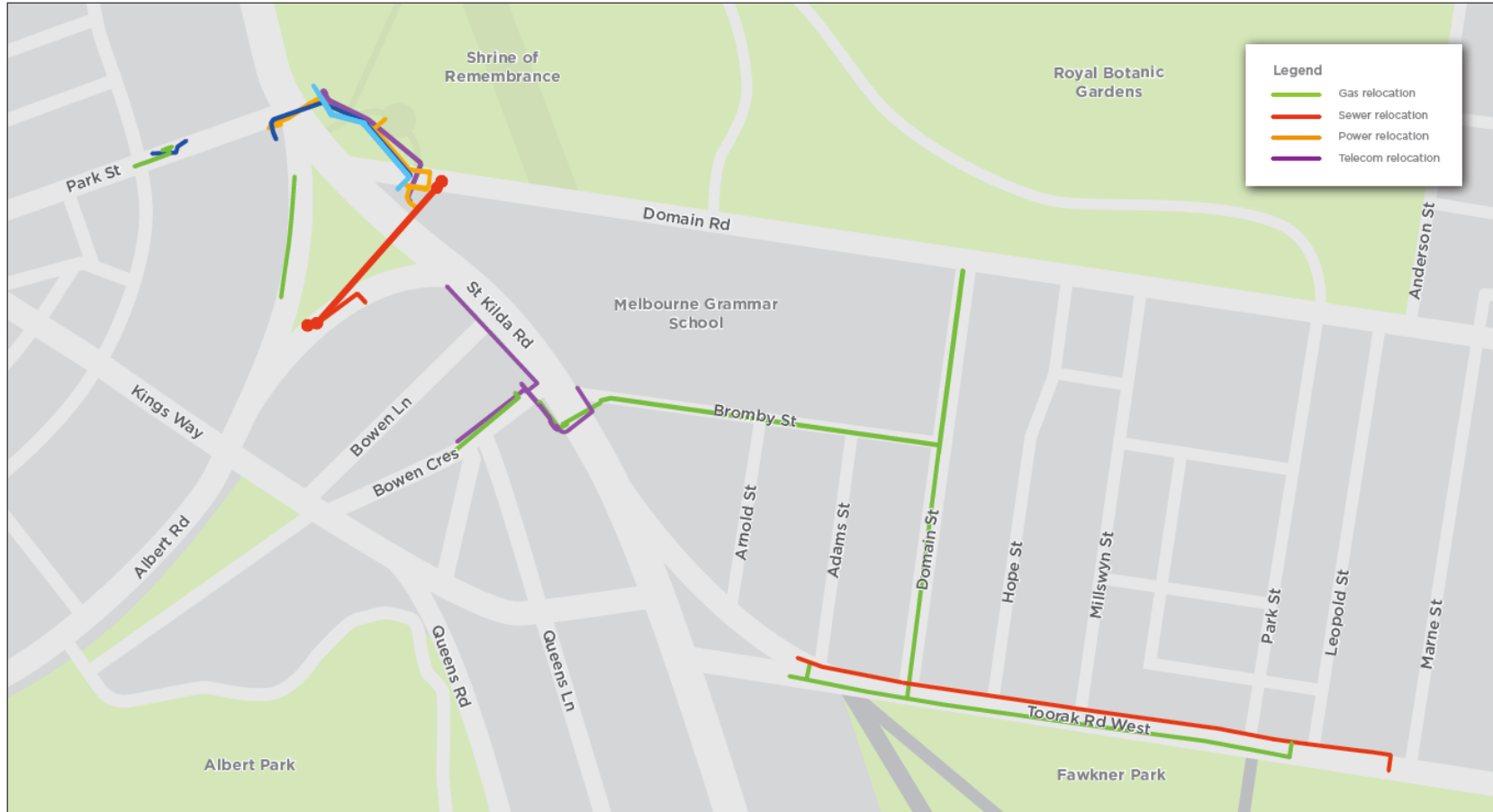
MEETING NO. 2
WEDNESDAY 18 OCTOBER 2017



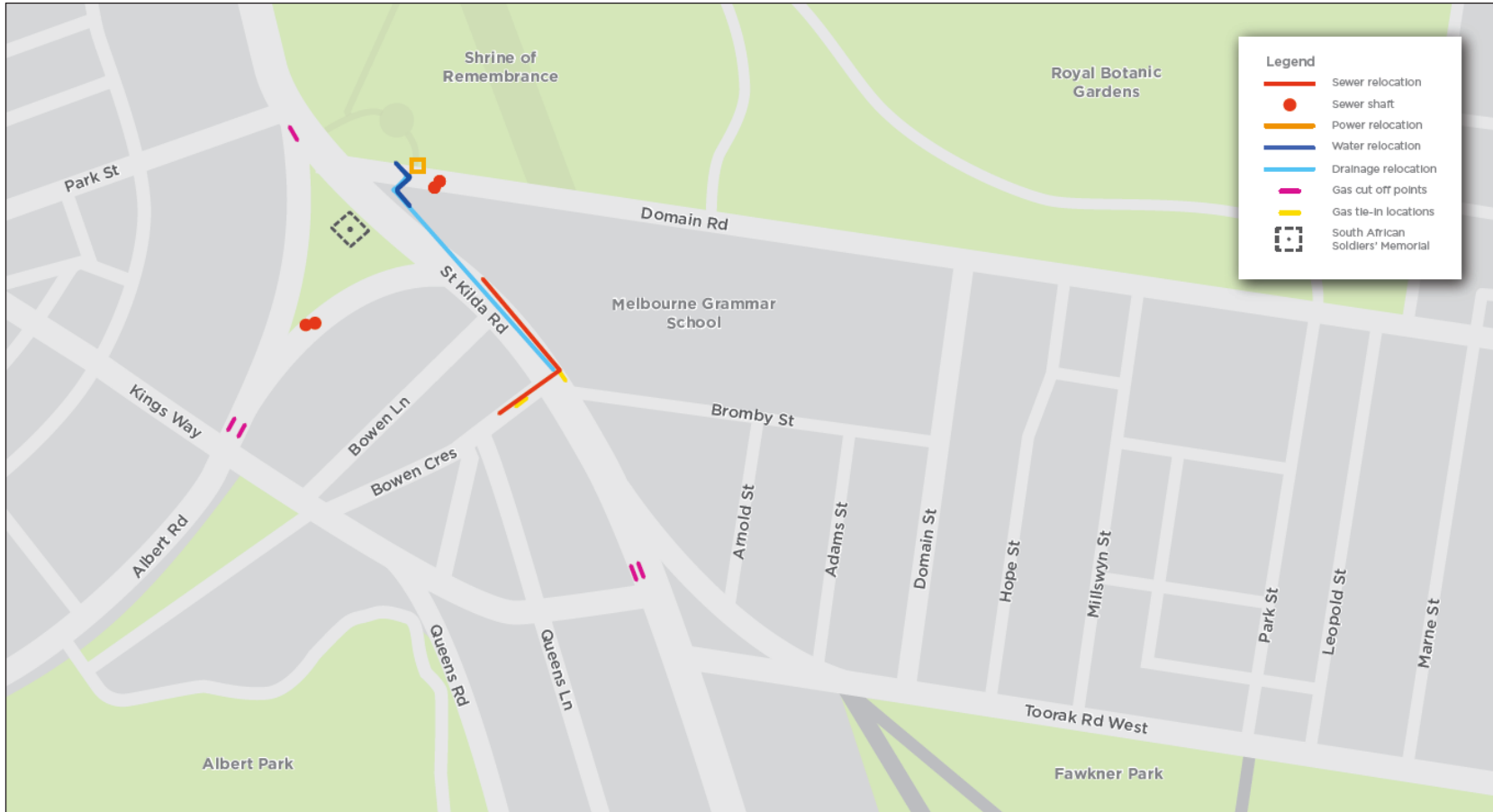


JOHN HOLLAND EARLY WORKS PROGRAM UPDATE

METRO TUNNEL DOMAIN PRECINCT- COMPLETED WORKS



METRO TUNNEL DOMAIN PRECINCT– REMAINING/ CURRENT WORKS



Indicative only.

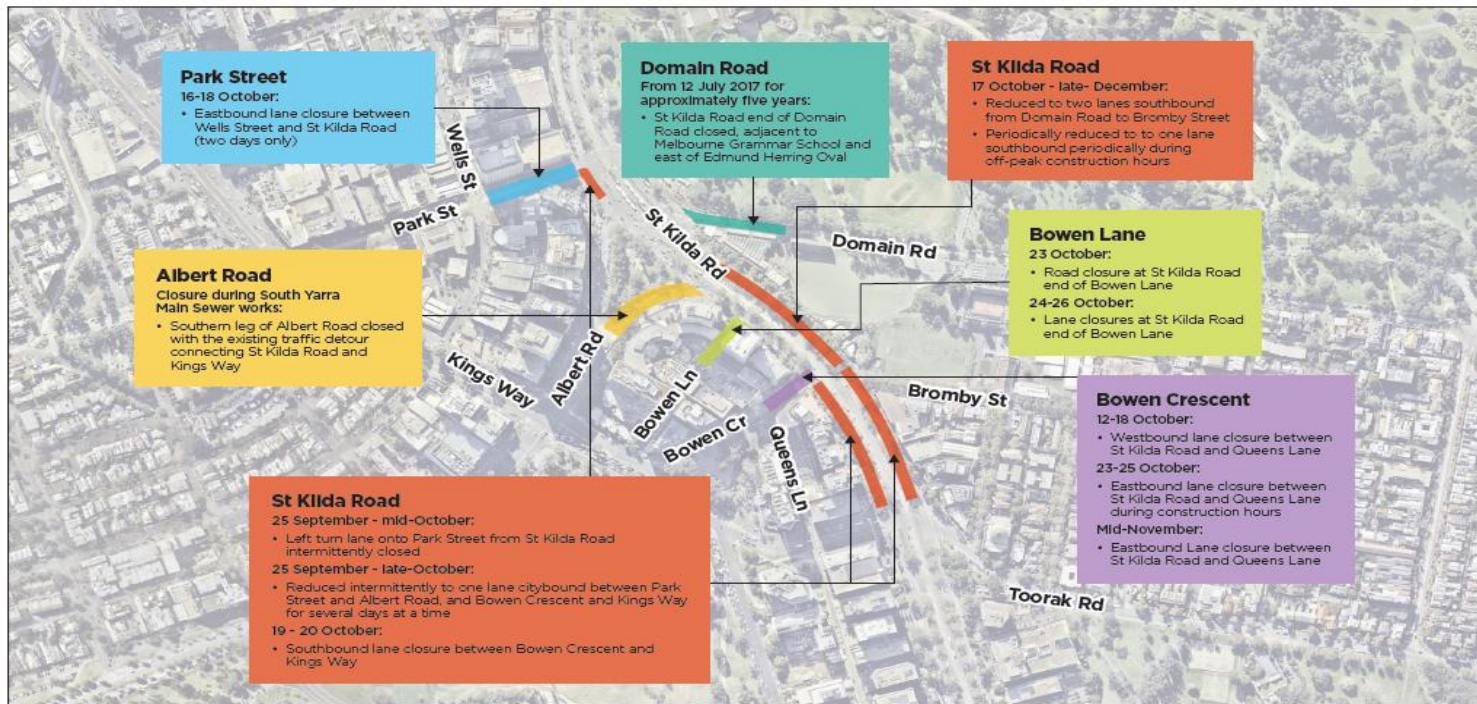
METRO TUNNEL DOMAIN PRECINCT – WORKS EXPECTED COMPLETION UPDATE

- Communications civil relocation works – completed
- Gas Service commissioning and de-commissioning works – late October 2017
- Water main and local sewer diversion works – late December 2017
- Power service relocation works – late October 2017
- South Yarra Main Sewer –late December 2017
- South African Soldiers’ Memorial –late December 2017
- Road and traffic network enhancements – January 2018

METRO TUNNEL



DOMAIN PRECINCT TRAVEL DISRUPTIONS OCTOBER 2017



Indicative only. Updated 13 October 2017

METRO TUNNEL SOUTH AFRICAN SOLDIERS' MEMORIAL RELOCATION UPDATE

- Site establishment – complete
- Stone mason mobilised to site – week of 16 October
- Removal of lions and pavers – late October
- Scaffolding memorial – early November
- Memorial removal – commencing mid-November
- Completion – late December
- South African Soldiers' Memorial will be transported to a secure storage location for restoration



Beon Energy Solutions

Beon Scope of Works - Domain

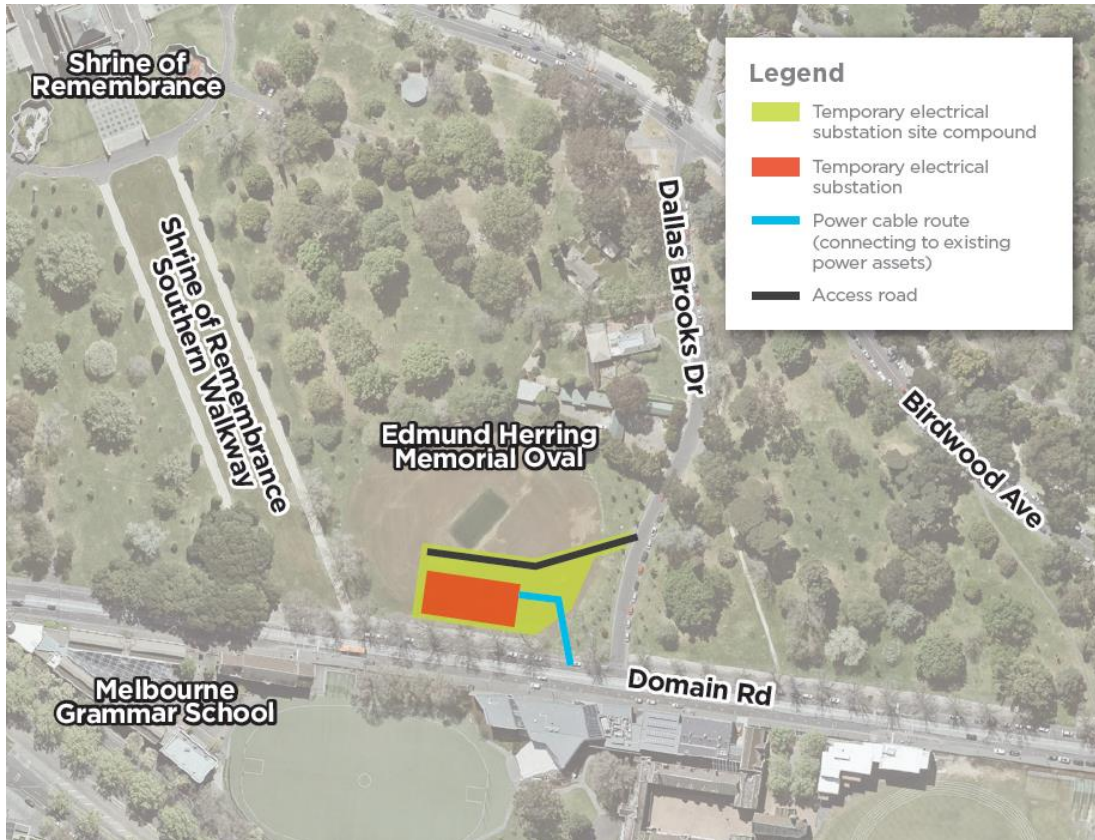
Overall Scope

- 🔥 Design and Construction of a temporary electrical substation at Domain to power the Tunnel Boring Machines (TBM)
- 🔥 Beon construction will last approx. 6 months with the substation handed over to MMRA
- 🔥 Substation is planned to be removed in approx. 5 years by MMRA/CYP on completion of the TBM work
- 🔥 Work commenced on Tuesday 10th October to mobilise to the site

Domain Precinct

- 4 Site Parking will be within the compound – using the newly created access road
- 4 Minimal impact to traffic – when there is, a traffic management plan will be followed
- 4 Temporary Road Closures will only occur when bringing in large items – expecting this to be approx. 5 deliveries
 - These closures will last approx. 6 hours in duration
- 4 All relevant stakeholders will be contacted around the larger deliveries
 - This will be between now and Christmas
- 4 Tree protection measures have already been established – fencing for the Domain Road trees and the juvenile trees on Dallas Brooks Drive. No trees will be removed for the substation.
- 4 Trucks/Traffic will enter the site from Birdwood Ave along Dallas Brooks Drive

Domain Precinct - Edmund Herring Oval



PPP ENVIRONMENTAL COMPLIANCE AND ACCOUNTABILITY

OVERVIEW

Purpose

- Overview of contractors' obligations to consult with stakeholders
- How contractors' compliance with requirements are monitored and reviewed

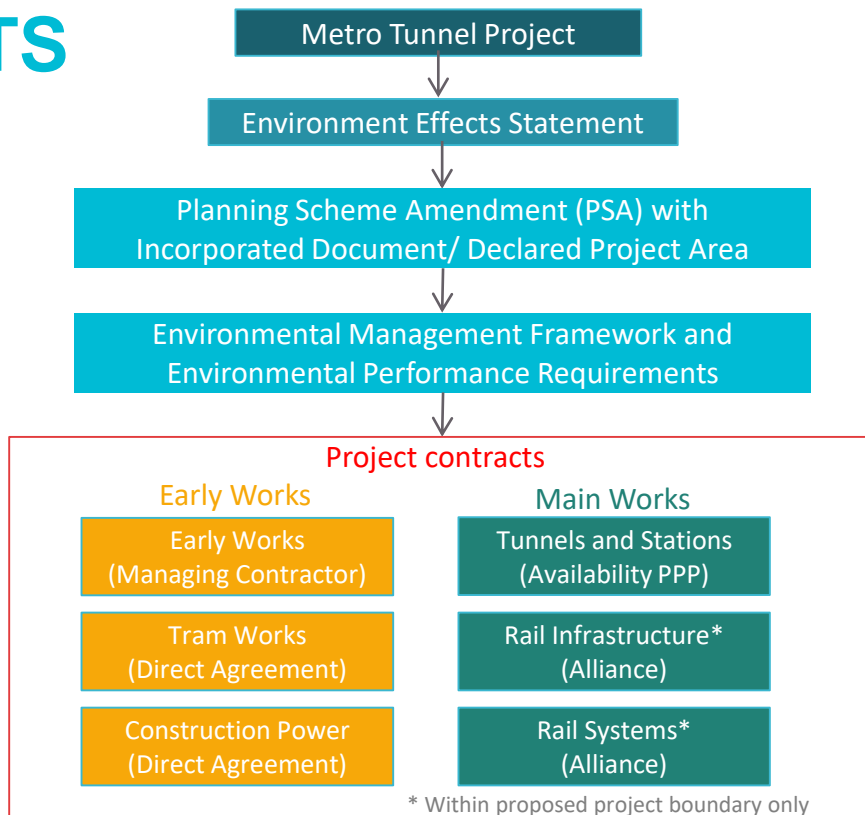
Presentation

- Approval requirements
- Consultation obligations
- PPP project delivery



APPROVAL REQUIREMENTS

APPROVALS & CONTRACTS



APPROVALS

- Minister for Planning approved
 - Planning Scheme Amendment (PSA) with Incorporated Document
 - Project Area under MTPF Act
- Three levels of plans described in PSA Incorporated Document
 1. Strategic Framework & Development Plans – approved by Minister for Planning
 2. Management of broad impacts – reviewed by Independent Environmental Auditor and approved by Independent Reviewer or MMRA
 3. Technical plans – reviewed by Independent Reviewer or MMRA

PSA INCORPORATED DOCUMENT

- Strategic Framework and Development Plans require Minister for Planning approval of:
 - Environmental Management Framework (EMF) with Environmental Performance Requirements (EPRs)
 - Residential Impact Mitigation Guidelines (RIMG) and Business Support Guidelines for Construction (BSGC) as part of EMF
 - Community & Stakeholder Engagement Management Framework
 - Urban Design Strategy
 - Early Works Plans
 - Development Plans

PSA INCORPORATED DOCUMENT

- Management of broad impacts – reviewed by Independent Environmental Auditor and approved by Independent Reviewer or MMRA
 - Construction Environmental Management Plan
 - Site Environment Implementation Plans
 - Transport Management Plan/s
 - Business Disruption Plan
 - Construction Noise and Vibration Management Plan
 - Operations Environmental Management Plan

ENVIRONMENTAL MANAGEMENT FRAMEWORK (EMF)

- Framework to manage the environmental impacts of the Project
- Outlines MMRA and contractor roles and responsibilities for environmental management
- Broadly identifies stakeholder groups
- Requires appointment of **Independent Environmental Auditor** to assess compliance with the EMF
- Imposes Environmental Performance Requirements (EPRs)
 - EPRs are **monitored, reported and audited**
 - EPRs require consultation to be undertaken in various ways and for various reasons (ie: meetings and workshops)
 - Note: EPRs are just one check of many to ensure correct management of environmental impacts

ENVIRONMENTAL PERFORMANCE REQUIREMENTS (EPRs)

- Environmental Performance Requirements (EPRs) were developed through the EES process
- Define outcomes that must be achieved but allow innovation in how those outcomes are met
- Set the overarching principle and provide clarification about specific issues that must be addressed
- Were updated to incorporate outcomes of the Minister for Planning's assessment of the EES
- Are enforced in project contracts
- Environmental Management Framework (EMF) contains the EPRs and has been approved by the Minister for Planning



CONSULTATION OBLIGATIONS

ENGAGEMENT OBLIGATIONS

MMRA's philosophy to communication is: "no surprises, be responsive and proactive"

Engagement and consultation requirements included in following documents:

1. Incorporated Document
2. Environmental Management Framework and the EPRs
3. MMRA Community and Stakeholder Engagement Management Framework
4. Contractor Community and Stakeholder Engagement Management Plan
5. Early Works Plans & Development Plans
6. Early Works Managing Contractor Agreement & PPP Project Agreement

ENVIRONMENTAL PERFORMANCE REQUIREMENTS - EXAMPLES

- Arboriculture – Contractor must develop and implement a plan **in consultation with council** that identifies trees to be removed or retained and options for relocation or reinstatement of trees
- Social/Community – Contractor must provide **written notice** to adjoining landholders of any works to be carried out in a precinct
- Social/Community – Contractor must implement a Community and Stakeholder Engagement Management Plan (CSEMP) which requires **community engagement** to be undertaken by the contractor

COMMUNITY AND STAKEHOLDER ENGAGEMENT MANAGEMENT FRAMEWORK (CSEMF)

- Required by EPR SC3, and has been approved by the Minister for Planning
- Outlines principles and approach to advising stakeholders
- Outlines clear engagement phases and objectives
- Contractor CSEMPs must be consistent with the CSEMF

Example:

Phase	Engagement Objectives	Engagement Outcomes
<p>Phase 4 - 2017</p> <p>Engagement to support early works, procurement and property acquisition.</p>	<ul style="list-style-type: none"> • Support landowner and tenants through the land acquisition process. • Establish clear processes for notifying stakeholders and the community about potential impacts from works, including a transparent complaints management process. 	<ul style="list-style-type: none"> • Multiple communications channels and opportunities provided for stakeholders and the community to ask questions about the project and raise issues. • Community and stakeholders are aware of the project benefits, timing and impacts.

CSEMF (CONTINUED)

- The CSEMF outlines principles and goals of communication
 - Engagement must be effective, timely, meaningful and avoid surprises
- **Goal: Ensure multiple communications channels and opportunities for community to ask questions/raise issues about the Project**
- Engagement tools and techniques include:
 - Project website and social media (twitter, Facebook, LinkedIn)
 - Letter box drops and newsletters
 - Community drop-in sessions
 - Meetings with local residents and businesses
 - 24 hour toll-free Project Information Line (1800 551 927) and website
 - Presentations to stakeholders
 - Electronic notification database

COMMUNITY AND STAKEHOLDER ENGAGEMENT MANAGEMENT PLAN (CSEMP)

- Contractor must develop a CSEMP, consistent with MMRA's CSEMF
- CSEMP identifies key milestones, issues and activities that contractor must communicate
- **Goal: building and consolidating trust**
- CSEMP outlines procedure for construction notifications to community
- Notifications:
 - will be distributed to affected communities and stakeholders
 - will generally be distributed through letters, signage, message boards, newspapers and community notice boards
 - copies emailed to relevant local councils, authorities and key stakeholders

CSEMP (CONTINUED)

- CSEMP identifies key milestones, issues and activities that CYP must communicate

Example:

- CYP must communicate:
 - start and end of tree removal
 - start and end of major road closures for works
 - dust, noise and vibration considerations
 - works impacting residents/business access



PPP PROJECT DELIVERY

PROJECT AGREEMENT

- The Project Agreement requires Project Co to:
 - Comply with all laws
 - Comply with EPRs and all other requirements of the EMF and CSEMF
 - Develop its own management plans and Community and Stakeholder Engagement Plan
 - Consult with stakeholders on any design issues as appropriate



MONITORING COMPLIANCE WITH CONSTRUCTION CONTRACTS

PPP CONTRACT COMPLIANCE

- The delivery phase of the Metro Tunnel Project will be monitored by:
 - an **Independent Reviewer (IR)** and
 - an **Independent Environmental Auditor (IEA)**

INDEPENDENT REVIEWER

- The **Independent Reviewer** (IR) is jointly appointed by the State and the PPP Contractor
- The IR continuously reviews the Project activities to ensure the PPP Contractor is meeting its obligations under the Project Agreement
- The IR can access the work sites, and the records and systems of the PPP Contractor
- The IR also approves certain plans (listed in the Incorporated Document)
 - the PPP Contractor will be required to show the IR how any stakeholder comments on these plans have been addressed

INDEPENDENT ENVIRONMENTAL AUDITOR

- The **Independent Environmental Auditor (IEA)** is appointed by Project Co
 - undertakes environmental audits of contractor compliance with the plans required under the EMF and the EPRs
 - prepares audit reports on compliance with the EMF (ie: PPP audits are provided to MMRA, the IR and other government agencies)
 - reviews management plans prior to works commencing to ensure compliance with EPRs and other requirements
- The IEA will also consider complaint trends about non-compliance with EPRs
- Compliance with EPRs assessed through interviews, observations and records