



KENSINGTON & ARDEN COMMUNITY REFERENCE GROUP

25 OCTOBER 2018

ARDEN (NORTH MELBOURNE) PRECINCT UPDATE



DISCUSSION ITEMS

No items raised in advance of meeting



PROGRAM



PROGRESS UPDATE

Ongoing activities

- Site establishment activities
- Piling and diaphragm-wall construction (eastern section of station box)
- Station box excavation (western section) and installation of strutting
- Drain cleaning and CCTV investigations
- Concreting of roads within the site and installation of rumble grids
- Surveying and sampling/testing of groundwater and soil

HOARDING ARTWORK - LAURENS STREET





ARDEN CONSTRUCTION SITE

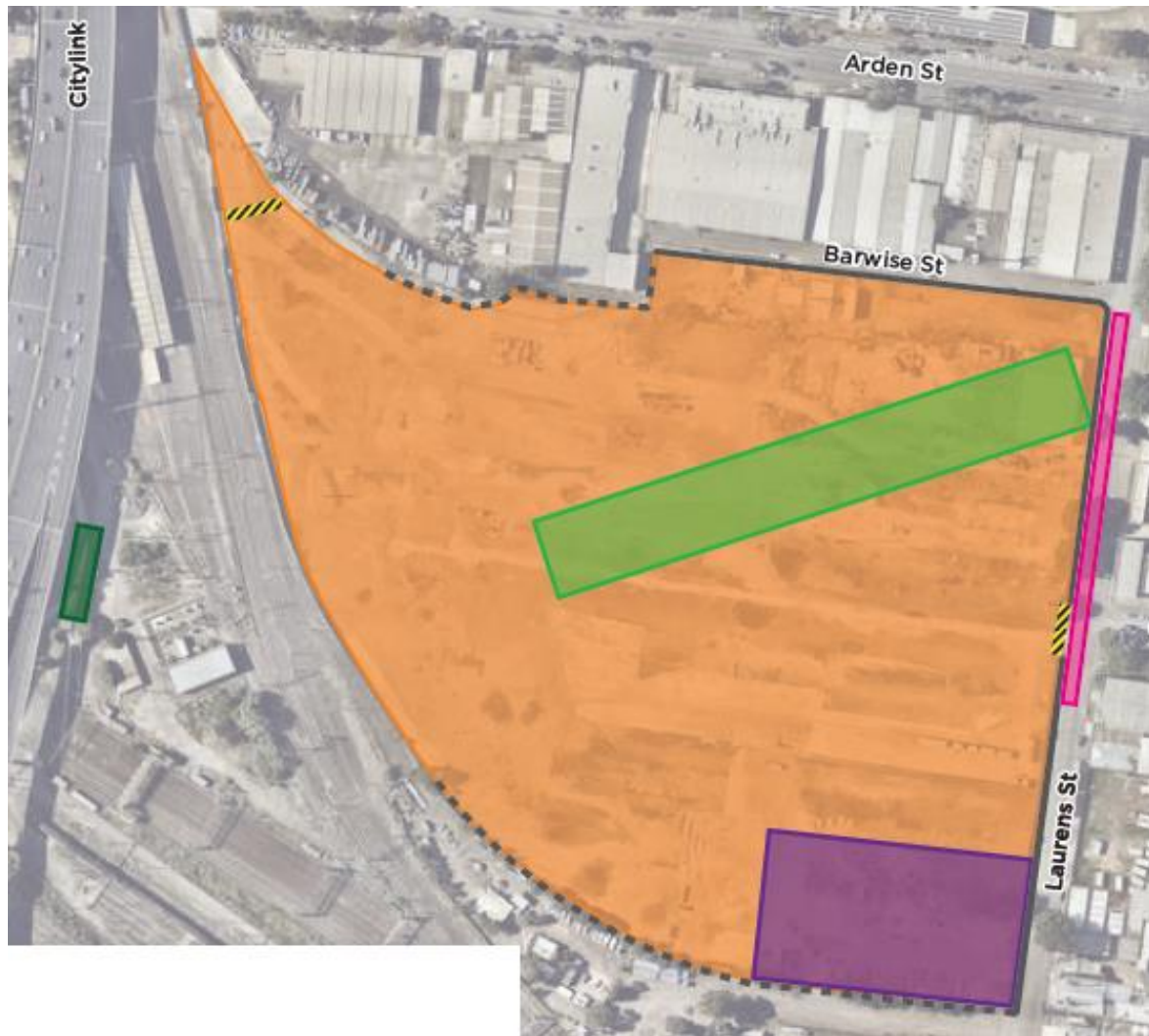


CONSTRUCTION LOOKAHEAD

- Early works for concrete batching plant
 - Construction of concrete batching plant: end-November 2018 to mid-January 2019
 - Concrete production: up to 120 cubes per hour (expected requirement 100 cubes per hour)
- Connection of new sewer lines to existing network: two weeks from end-November to mid-December

CONSTRUCTION PROGRAM

Activity	Oct	Nov	Dec	Jan	Feb	Mar
Site set up	Active	Active	Active	Active	Completed	Completed
Diaphragm-wall construction	Active	Active	Active	Completed	Completed	Completed
Piling	Active	Active	Active	Active	Active	Active
Excavation of station box	Active	Active	Active	Active	Active	Active
Base slab construction	Completed	Completed	Active	Active	Active	Active
Hoarding/gate modification	Active	Active	Active	Completed	Completed	Completed
Concrete internal roads	Completed	Completed	Active	Active	Active	Active
Sewer connections	Completed	Completed	Active	Active	Active	Active



Legend

-  Work site
-  Site gate
-  CBD construction support
-  Piling platform & diaphragm wall construction
-  Temporary pedestrian/cyclist detours
-  Drain clearing
-  Existing hoarding
-  Hoarding installation

TRAFFIC AND TRANSPORT

TRAFFIC MANAGEMENT

- Intermittent closures of western footpath on Laurens Street, including closures of up to six on-street car parking spaces, for diaphragm wall construction and piling
 - Pedestrians and cyclists detoured to eastern side of road
 - Some traffic shuttle flow may be required
- GPS tracking to monitor contractor truck movements (known as geofencing)
- Shuttle flow and/or temporary lane closures may be associated with sewer connection works. Traffic flow will be maintained in both directions.



ENVIRONMENTAL MANAGEMENT

MODELLING AND ANTICIPATED IMPACTS

- Modelling:
 - Considers type of equipment to be used, proximity of works to residential homes, at source mitigation measures
 - Provides a prediction of noise impacts
 - Informs completion of the Out Of Hours Work (OOHW) Permit process, reviewed/approved by all technical leads and provided to the IEA
 - Informs the type and extent of works notification and engagement to be completed

MODELLING AND ANTICIPATED IMPACTS (CONT.)

Strutting evening works (6pm – 10pm, M-F)

- Mitigation:
 - OOH construction vehicle access via Arden Street only
- Monitoring:
 - Noise monitor at 142 Laurens Street
 - Attended monitoring – Laurens, Queensberry and Miller streets
- Monitoring results:
 - Attended monitoring shows compliance with NV6 requirements



COMMUNITY UPDATE

TOP ISSUES

Out of hours work door knock

- Approx. 540 properties door knocked and 115 conversations (extent of door knock determined through OOH process)
- Key themes:
 - Positive project sentiment
 - Questions about tunnel depth and alignment
 - Feedback on dust, noise, vibration and light spill associated with works



OTHER ITEMS?

KENSINGTON (WESTERN PORTAL) PRECINCT UPDATE



DISCUSSION ITEMS

No items raised in advance of meeting



PROGRAM



PROGRESS UPDATE

Ongoing activities

- Site establishment at Hobsons Road and Childers Street sites
- Site and service investigations on Childers Street (along the rail corridor embankment)
- Lloyd Street cross passage ground improvement works
- Detour route modifications
- Completion of turning bay
- Rail-side bored piling



HOBSONS ROAD SITE ESTABLISHMENT



CONSTRUCTION OF TURNING AREA



CONSTRUCTION OF TURNING AREA



RAIL-SIDE PILING

CONSTRUCTION LOOKAHEAD

What's coming up

- Pile break back works (two days from 8 November)
- Gas main protection works in Childers Street
 - Includes first implementation of Derby/Tennyson Street over-height vehicle detour
- Monitoring instrumentation installation within rail corridor (ALBF night works)
- 24-hour weekend out of hours works (3-5 November) within rail corridor
- Long term, temporary car park construction at Hobsons Road site

CONSTRUCTION PROGRAM

Activity	Oct	Nov	Dec	Jan	Feb	Mar
Construction of turning area	■					
Detour route modifications	■					
Piling (rail side)	■	■				
Cross Passage ground improvement (Lloyd St)	■	■	■	■		
Site and service investigations	■					
Hobsons Road site establishment	■	■	■	■	■	■
Gas main protection works		■				
Piling (road side)				■	■	
Cross passage ground improvements (LSBE)			■	■	■	■
Offset car park construction		■	■	■		

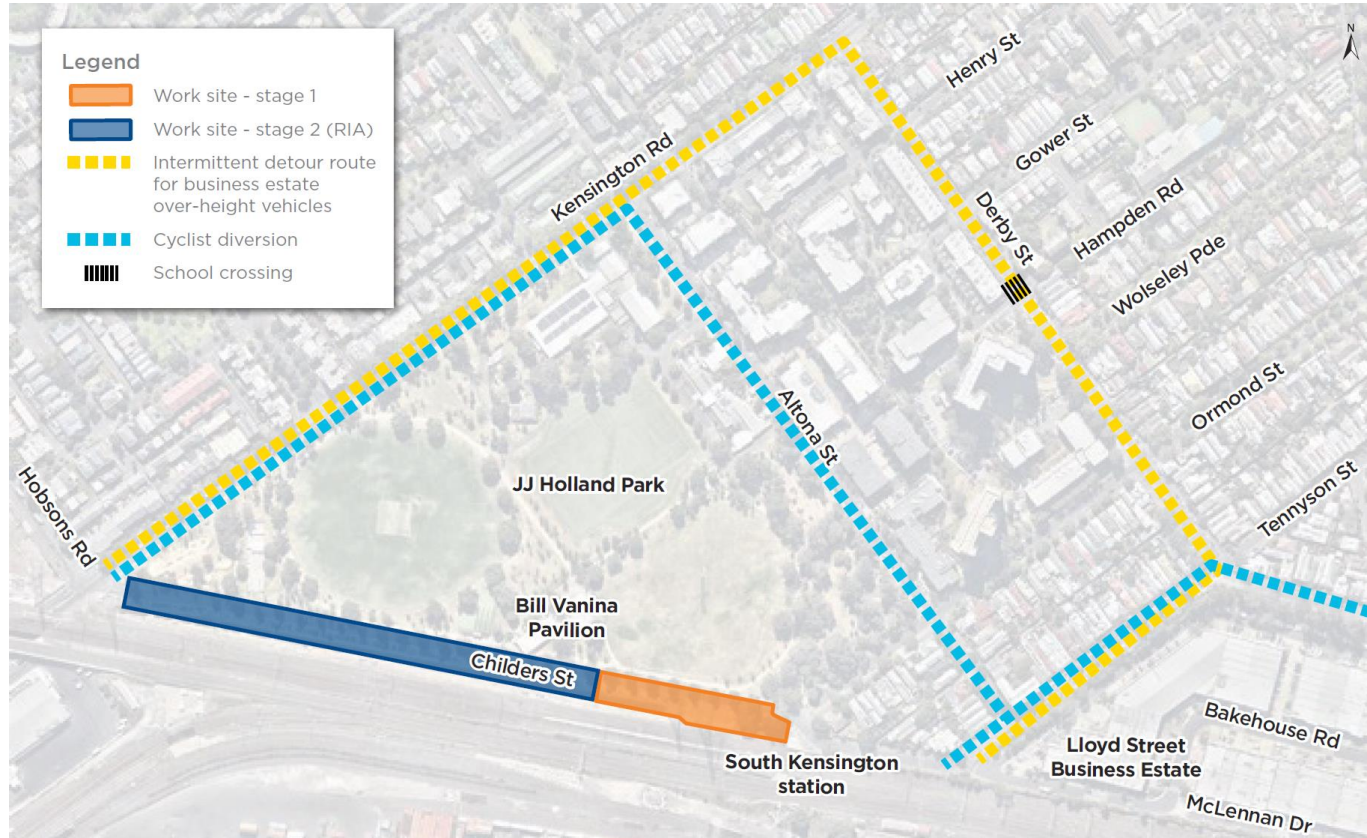
TRAFFIC AND TRANSPORT



TRAFFIC MANAGEMENT

- Temporary over-height vehicle detour via Derby/Tennyson Streets: expected 12 – 30 November
- Pedestrian detour around new turning bay in place from early November
- No cycle lane on Lloyd Street during cross passage ground improvement works
- Up to five car spaces along Childers Street at a time will be occupied for NDD
- Traffic management in place on Hobsons Road to facilitate delivery & removal of materials from site

DETOUR ROUTES





TRANSPORT CHANGES

From 10.30pm Saturday 3 November until the first service Monday 5 November buses will replace trains on the following lines:

- **Sunbury:** Between North Melbourne and Sunshine
- **Werribee and Williamstown:** Between North Melbourne, Newport and Williamstown



ENVIRONMENTAL MANAGEMENT

MODELLING AND ANTICIPATED IMPACTS

24-hour weekend out of hours works in rail corridor - 11pm Saturday 3 November to 7am Monday 5 November

- Low to medium level noise

Pile break back works – 7am to 6pm

- Predicted levels:
 - Closest residential property: 72 dBA
 - KCCC: 59 dBA
- No highly noise affected properties
- Potentially 29 noise affected properties (Ormond, Altona & Childers streets)

MITIGATION STRATEGIES

- Works notifications
- Where possible noisy works will be scheduled during the day
- Material deliveries prior to occupation in regular working hours
- Directly impacted residents will be doorknocked

Pile break back works

- Noise mats in place
- Special circumstances respite and relocation

Hobsons Road site establishment

- Water carts on site to minimise dust



ENVIRONMENTAL PERFORMANCE REQUIREMENTS

Rail side piling – modelling and monitoring:

133 Ormond Street

- Modelled: 71 dBA
- Monitored: 62 dBA

Kensington Community Children's Cooperative

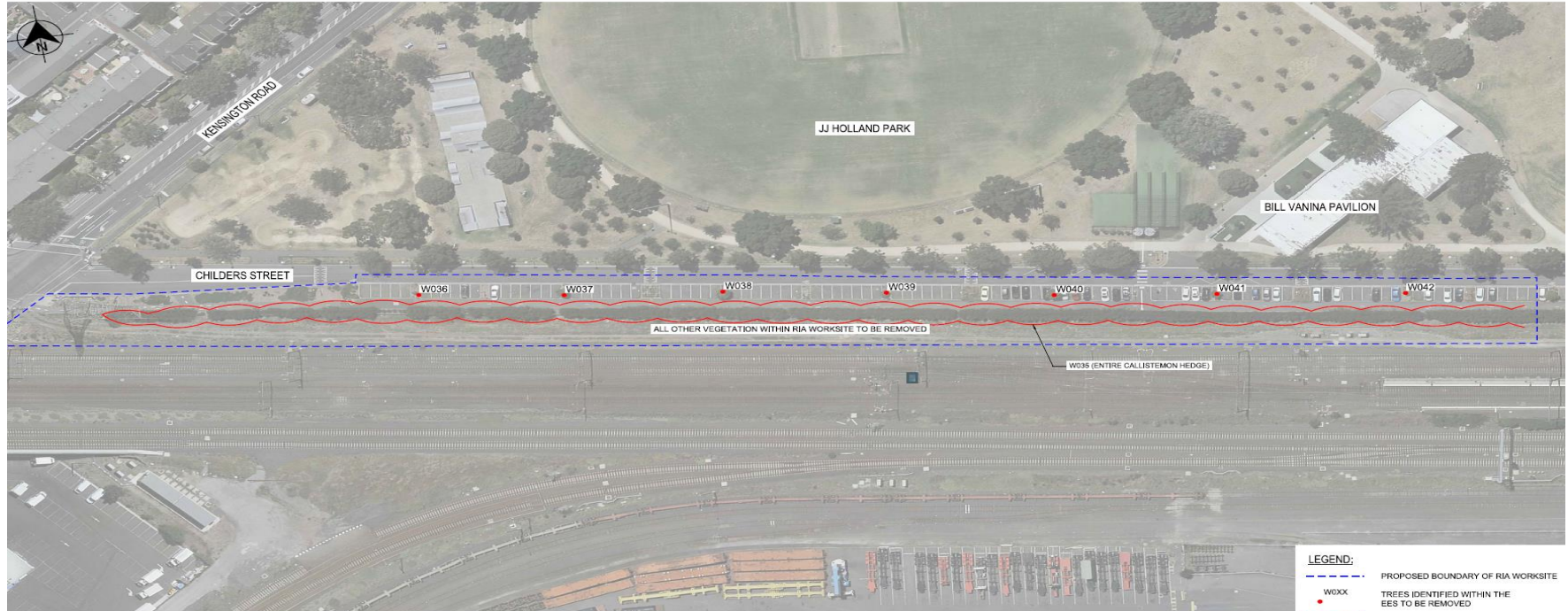
- Modelled: 59 dBA
- Monitored: 59 dBA



TREE REMOVAL

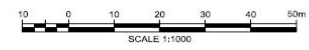
- Removal of the callistemon hedge from Childers Street along rail corridor embankment (from late-October)
- Removal of seven trees along Childers Street (from late 2018-early 2019)

TREE REMOVAL – CHILDERS STREET



FOR INFORMATION

PLAN
SCALE 1:1000





COMMUNITY UPDATE



TOP ISSUES

Key issues raised during October

- Dust at Hobsons Road site
 - Water cart on site to minimise dust
- Drill rig noise (site investigations)
 - Installation of additional noise mats
 - Modified work hours
- Waste soil classification and handling
 - Upcoming Kensington Community Update & additional web content
 - Ongoing discussions with community

IN THE COMMUNITY

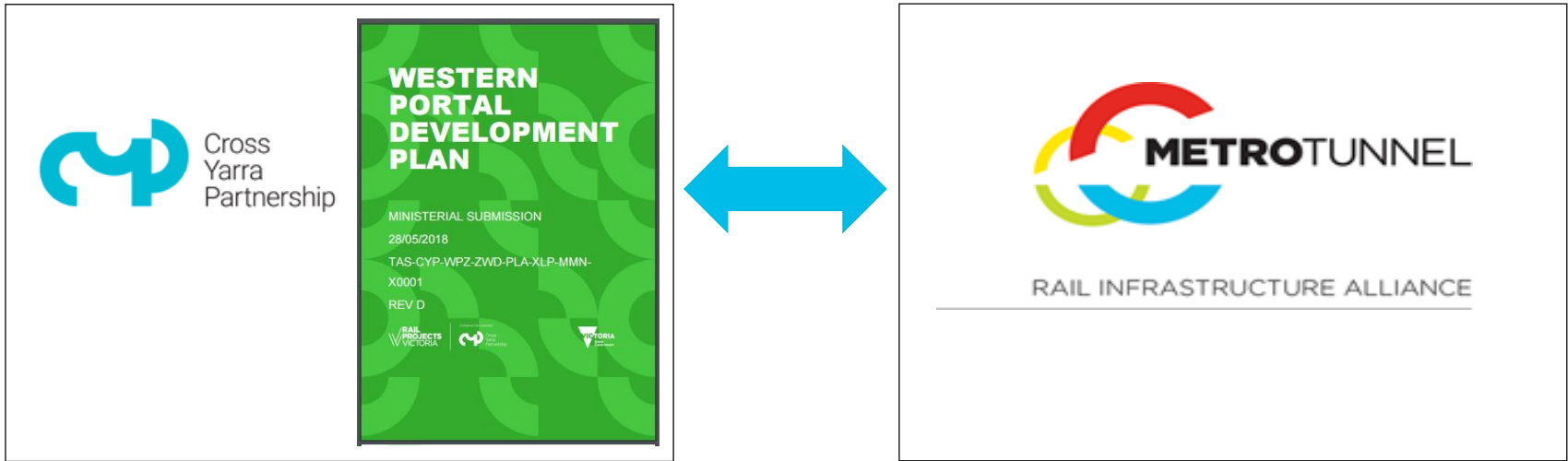
Hoarding artwork engagement – open until 30 October

- Two sessions with KCCC children/staff
- Four pop-up information sessions
- Web portal open for ideas and image uploads – visit the Creative Program page at metrotunnel.vic.gov.au



RIA DEVELOPMENT PLAN

- Cross Yarra Partnership (CYP) has already prepared the Western Portal Development Plan that captures its scope of works
- Rail Infrastructure Alliance (RIA) is working closely with CYP to ensure that the RIA Western Portal Development Plan provides a seamless and coherent design response between the two packages



RIA DEVELOPMENT PLAN PROCESS

TIMING	STEP
OCTOBER 2018	Workshop 1: Commence engaging with stakeholders and the community to understand values and expectations
NOVEMBER 2018	Progress development of concept designs
DECEMBER 2018	Workshop 2: Seek feedback on concept designs
JANUARY 2019	Workshop 3: Present urban designs (as will be presented in the Development Plan)
FEBRUARY – MARCH 2019	Plans released for public display (15 days)
MARCH – APRIL 2019	Collate and respond to public submissions
MID 2019	Anticipated approval from Minister of Planning

RIA DEVELOPMENT PLAN – WORKSHOP 1

Overview of process and information gathering about community values and expectations

- Held at Bill Vanina Pavilion on Tuesday 23 October 2018
- Met with community representatives to understand important design elements
- Feedback and local insights will help inform the development of the RIA urban design concepts
- Team will consider feedback as it drafts urban design concepts for the western tunnel entrance





OTHER ITEMS?



Western Portal

South Kensington

North Melbourne

Parkville

The existing 'North Melbourne' station will be renamed West Melbourne.

West Melbourne

Melbourne Central

Flagstaff

State Library

Parliament

Town Hall

Southern Cross

Flinders Street

Richmond

Anzac

South Yarra

Eastern Portal

Sunbury Line

Cranbourne / Pakenham Line