

Works Notification

Work and traffic update Kensington

Tuesday 11 to Wednesday 12 May and Friday 14 May to early June 2021

This notification provides an update on Metro Tunnel works and traffic management arrangements in place for businesses at the Lloyd Street Business Estate to support upcoming service installation in the rail corridor.

Site investigation works are required to verify the location of existing underground services along McLennan Drive and Bakehouse Road. Once the location of existing underground services are confirmed, works will commence to install new rail services within the rail corridor. Site investigation works will occur on Tuesday 11 May 2021 with rail services works commencing on Friday 14 May 2021.

What we are doing

Site investigations

- Using a saw cutter to remove small sections of asphalt along McLennan Drive and Bakehouse Road
- Using a non-destructive digging (NDD) truck to investigate the location of services in four locations (see map overleaf)
- Reinstating the sections of road with asphalt and compacting the surface with a handheld compaction machine.

Rail corridor works along McLennan Drive and Bakehouse Road

- Following the completion of site investigations, works will occur within the rail corridor, along McLennan Drive and Bakehouse Road, to install new steel posts, trays and casings which will contain new rail signalling cables
- For the safety of workers due to the close proximity to the rail corridor, access to the work area will occur from McLennan Drive and Bakehouse Drive
- This will require short term closures of up to 15 parking spaces along McLennan Drive and Bakehouse Drive

- Work will involve the use of a NDD truck to safely excavate holes for the new post foundations, installing and concreting posts into the ground, and fixing steel boxes to the posts
- On Saturday 15 and Sunday 16 May, an elevated working platform will be required to install cable trays onto existing overhead structures
- Access to the rail corridor will require the temporary removal of some fencing panels.

When

Site investigations

- 7am to 6pm, Tuesday 11 May to Wednesday 12 May 2021.

Rail corridor works

- 24/7 from 6pm, Friday 14 May to 7am, Monday 17 May 2021
- 7am to 6pm, Monday to Friday, from Monday 17 May (timing is subject to works occurring during the weekend prior and the outcomes of earlier site investigations).

What to be aware of

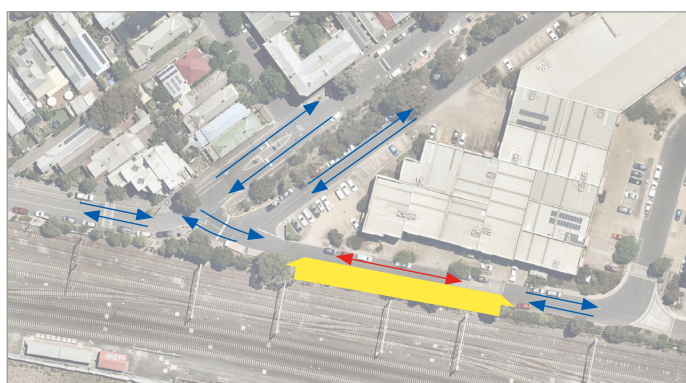
Traffic

- Bakehouse Road, between McClure Road and McLennan Drive will temporarily be reduced to one lane to allow works in this area. Traffic controllers will be in place to assist with vehicle movements. Two-way vehicle access will be maintained, with traffic controllers assisting with vehicle movements
- Sections of McLennan Drive will temporarily be reduced to one lane to allow works in this area. Two-way vehicle access will be maintained, with traffic controllers assisting with vehicle movements

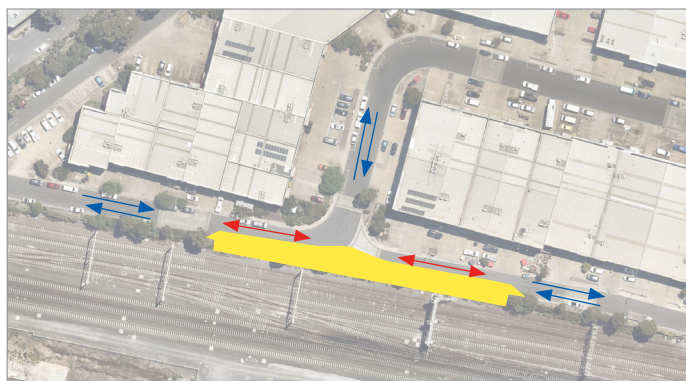
- Up to 15 parking spaces at any one time along McLennan Drive and Bakehouse Road (rail corridor side) will be required to undertake these works. It is expected these parking spaces will be required for up to 3 weeks.



Stage 1



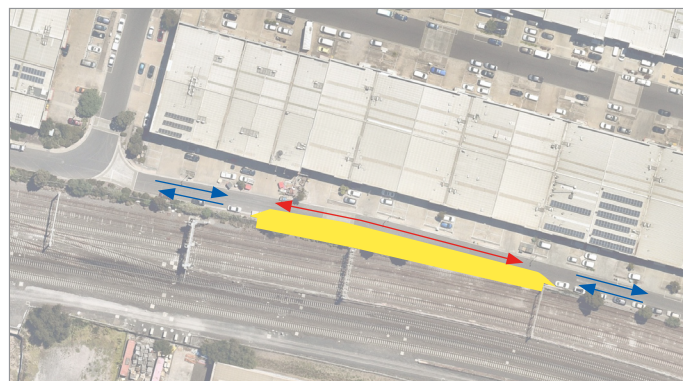
Stage 2



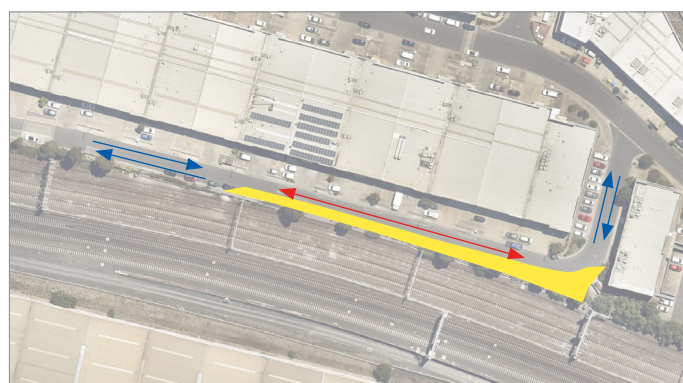
Stage 3

Noise

- These works are expected to generate periods of high level noise while using an NDD truck. All other works are expected to generate low levels of noise.



Stage 4



Stage 5

Key

- Parking closure and work area
- Two-way traffic
- Single lane traffic (two-way access maintained)

Health and safety

Works on the Metro Tunnel Project are progressing with strict COVIDsafe plans in place.

The health and safety of our workforce and community remains our top priority.

For more information and advice about the coronavirus (COVID-19), please visit coronavirus.vic.gov.au.

More information

To find out more about the Metro Tunnel Project:

 metrotunnel.vic.gov.au

 1800 105 105 (24 hours a day, 7 days a week)

Rail Projects Victoria
PO Box 4509, Melbourne, VIC 3001



Interpreter Service (03) 9209 0147

It should be noted that this information is current at the time of printing, however due to unforeseen circumstances, changes may occur. Please visit railprojects.vic.gov.au for the latest updates.