

# Monthly construction update

## Kensington

July 2021

Major construction is continuing in Kensington at the site of the future western Metro Tunnel entrance. This update provides an outline of current and upcoming works in your area throughout July.

### Construction snapshot

In July, works within the Kensington precinct will include:

- Childers Street reinstatement works
- Signalling Equipment Room and Communications Equipment Room (SER/CER) and compensatory flood storage works
- Rail corridor works
- Egress building construction
- Utilities connections
- Service investigation and relocation
- Temporary capping beam removal
- Site shed demobilisation.

Further information on these works can be found overleaf or at [metrotunnel.vic.gov.au](https://metrotunnel.vic.gov.au).

### When are we working?



#### Normal construction hours

7am to 6pm, Monday to Friday  
7am to 1pm, Saturdays.



#### Out of hours

Some works are required to take place out of normal construction hours. The timing of these works is outlined in the construction information overleaf.



#### 24 hours

24-hour works are sometimes required during peak construction activities. The timing of these works is outlined in the construction information overleaf.

### Health and safety

Works on the Metro Tunnel Project are progressing with strict COVIDsafe plans in place.

The health and safety of our workforce and community remains our top priority.

For more information and advice about the coronavirus (COVID-19), please visit [coronavirus.vic.gov.au](https://coronavirus.vic.gov.au).

# Works in your area

## Childers Street reinstatement works

### Childers Street

Ongoing to late-2021



- Installing new road kerbs and drainage pipes for parking bays and garden beds
- Landscaping works, including placing soil and mulch and planting vegetation
- Using a road profiling machine to remove existing asphalt layers, and using rolling machines, pavers and bobcats to lay the wearing course
- Installing street lighting, which includes using an excavator to dig holes for new foundations, installing concrete foundations, and placing light poles with a small crane
- Deliveries of asphalt will occur via trucks entering from Kensington Road
- Overnight deliveries of oversized machines may be required prior to asphaltting works commencing. Further information will be provided if overnight deliveries are required
- Installing the flood wall creative design
- Installing new road signage, Disability Discrimination Act (DDA) compliant tactile paving, and line-marking
- These works are expected to generate medium levels of noise with some high-level peaks.

## Signalling Equipment Room and Communications Equipment Room (SER/CER) and compensatory flood storage works

### Hobsons Road and Childers Street

Normal construction hours, ongoing to mid July 2021



- Landscaping works, including placing soil and mulch, and planting vegetation at the corner of Hobsons Road and Kensington Road
- Minor works to complete new access gates, concrete edging for the access road, bollards and signage
- These works will generate low to medium levels of noise during normal construction hours and low levels of vibration during compaction works
- Minor internal fit-out works will continue. Internal fit-out works will involve crews with hand tools and expected to generate low levels of noise.

## Rail corridor works

### Within the rail corridor, between Lloyd Street and Maribyrnong River

6pm, Friday 2 July to 7am, Monday 5 July



- Undertaking works within the rail corridor, installing signalling along the Sunbury Line and undertaking structural works at the tunnel entrance
- These works will involve the use of elevated work platforms, cranes, hand tools, non-destructive digging (NDD) trucks, excavators, and deliveries to and from site
- Traffic management will be in place on Bakehouse Road during this time
- These works are expected to generate medium levels of noise with periods of high-level noise while the NDD truck is operating.

## Egress building construction

### Childers Street

Ongoing until late 2021



- Installing waterproofing membrane, formwork and reinforcement using a crane and hand tools
- Pouring concrete to create the above-ground roof slab of the structure. Some major concrete pours may take up to 12 hours to complete. Further advice will be provided to nearby properties in advance of any extended pours
- Removing formwork using a crane and hand tools
- Building fit out works including the installation of mechanical, electrical and plumbing services
- Installing the precast platform in the egress building
- Installation of the under-track first stage concrete. This is the base on which the track will be installed.

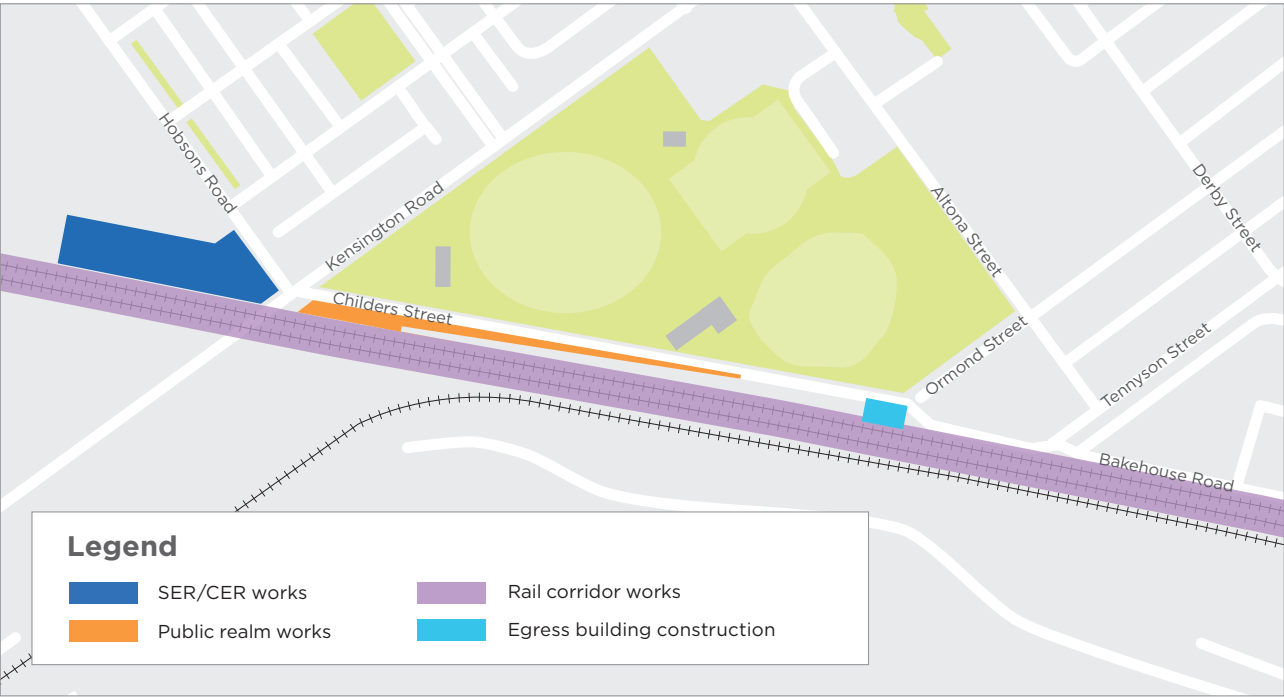
## Utilities connections

### Childers Street

Ongoing until late 2021



- Excavating and installing a stormwater box culvert
- Excavating and installing a sewer line to connect the egress building to the existing sewer network
- Excavating and installing twin water mains from the egress building to the existing water network.



## Service investigation and relocation

### Childers Street

Ongoing until late 2021



- Utility investigation works will be undertaken intermittently on Childers Street, between Ormond and Tennyson streets, and on Tennyson Street, between Childers and Altona streets to assist with planning for the egress building's future utility connections
- This involves scanning, cutting through the road and footpath surface, using NDD trucks to locate underground surfaces and then reinstating the road and footpath surface. These works may include intermittent impacts to traffic, footpaths and on-street parking adjacent to the work area. See the 'traffic and transport impacts' section for further information.

## Temporary capping beam removal

### Childers Street

Ongoing until late-July



- Removing temporary capping beams on the eastern and western walls of the egress building
- The concrete blocks will be removed from site one at a time, over a period of two to three days
- All trucks transporting the concrete blocks will travel via Childers Street only.

## Site shed demobilisation

### Childers Street

Early July



- Removing the site sheds and facilities adjacent to the egress building using a crane and trucks
- All trucks transporting the site sheds will travel via Childers Street only
- A replacement site shed will be installed underground below the egress building.

## Traffic and transport impacts

### Egress building utility investigation works

- Utility investigations will involve the short-term intermittent closure of Childers and Tennyson streets down to one lane in areas where works are occurring
- Traffic will be maintained in both directions via a shuttle flow arrangement
- Some on-street parking spaces on Childers Street may be temporarily impacted

- Sections of footpath adjacent to the works area may be temporarily closed, with local pedestrian diversions in place
- Signage and traffic controllers will be in place to direct vehicles, cyclists and pedestrians around the work area
- Over-height vehicle access to the Lloyd Street Business Estate will be maintained at all times.

### Capping beam removal works

- The closure of Childers Street continues throughout July
- Over-height vehicles accessing the Lloyd Street Business Estate and Childers and Tennyson street residents (south of the truncation) are required to detour via Kensington Road, Derby Street and Tennyson Street
- Please visit [metrotunnel.vic.gov.au](http://metrotunnel.vic.gov.au) for further information.

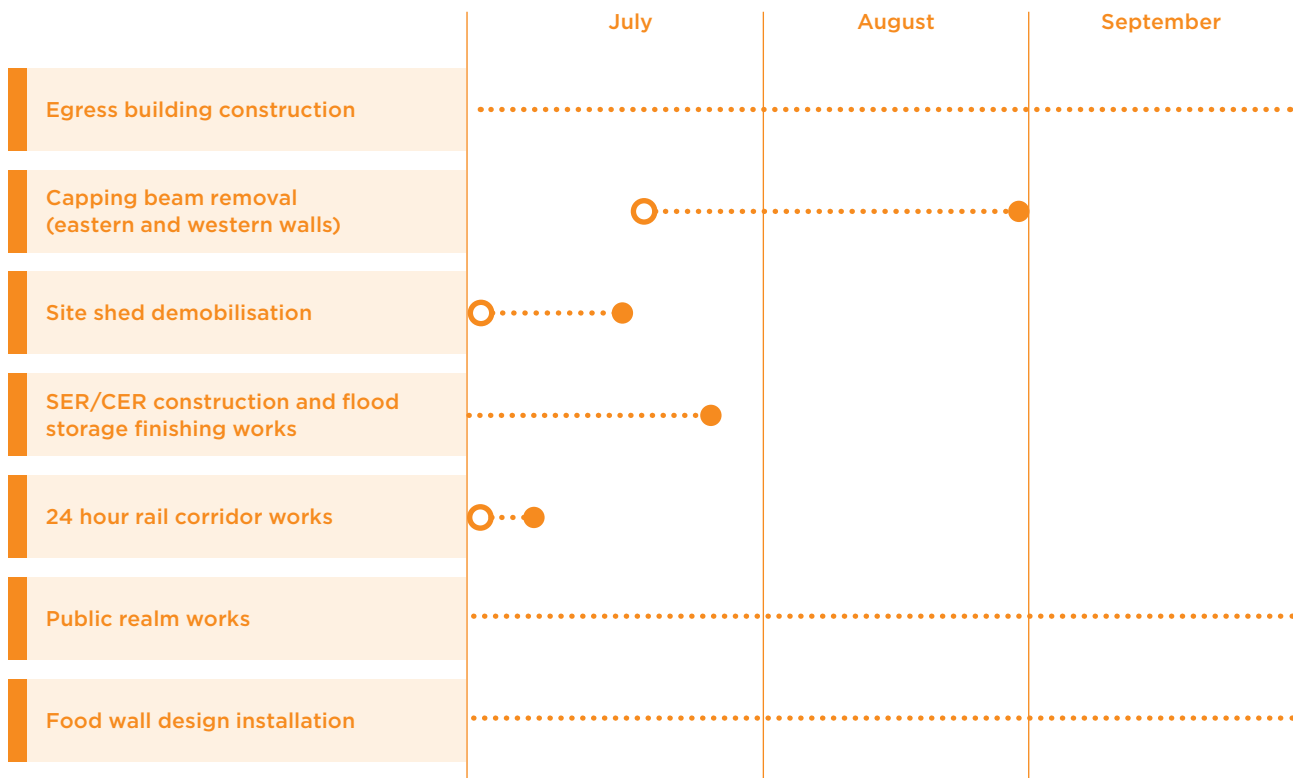
### Hobsons Road car park closure

- The Hobsons Road car park is now closed to the public to undertake SER/CER construction
- In June, two DDA compliant parking spaces will remain open for public use at the Hobsons Road car park site
- The project team is undertaking regular monitoring of parking on local roads while the Hobsons Road car park is closed.

### Travel changes

- Buses will replace trains from 2-5 July to allow the 24-hour works to take place. For journey planning and service information please visit [ptv.vic.gov.au](http://ptv.vic.gov.au) or call **1800 800 007**.


## Look ahead for 2021



### More information

To find out more about the Metro Tunnel Project:

 [metrotunnel.vic.gov.au](http://metrotunnel.vic.gov.au)

 1800 105 105 (24 hours a day, 7 days a week)

Rail Projects Victoria  
PO Box 4509, Melbourne, VIC 3001



Interpreter Service **(03) 9209 0147**

It should be noted that this information is current at the time of printing, however due to unforeseen circumstances, changes may occur. Please visit [railprojects.vic.gov.au](http://railprojects.vic.gov.au) for the latest updates.