



KENSINGTON AND NORTH MELBOURNE COMMUNITY REFERENCE GROUP

08 FEBRUARY 2018



PROJECT MILESTONES

2017

- Tunnels and Stations & Rail Systems Alliance contracts signed December 2017
- Rail Infrastructure Alliance shortlisted bidders in December 2017
 - CPB Contractors, John Holland, and AECOM Australia
 - Laing O'Rourke, Kellogg Brown & Root and WSP Australia

2018

- Rail Infrastructure Alliance tender process ongoing – contract award anticipated towards the end of 2018
- Sunbury to Cranbourne / Pakenham rail corridor Planning Scheme Amendment approval process
 - Public engagement and consultation to commence in March
- Upcoming major road closures
- Launch of communications campaign

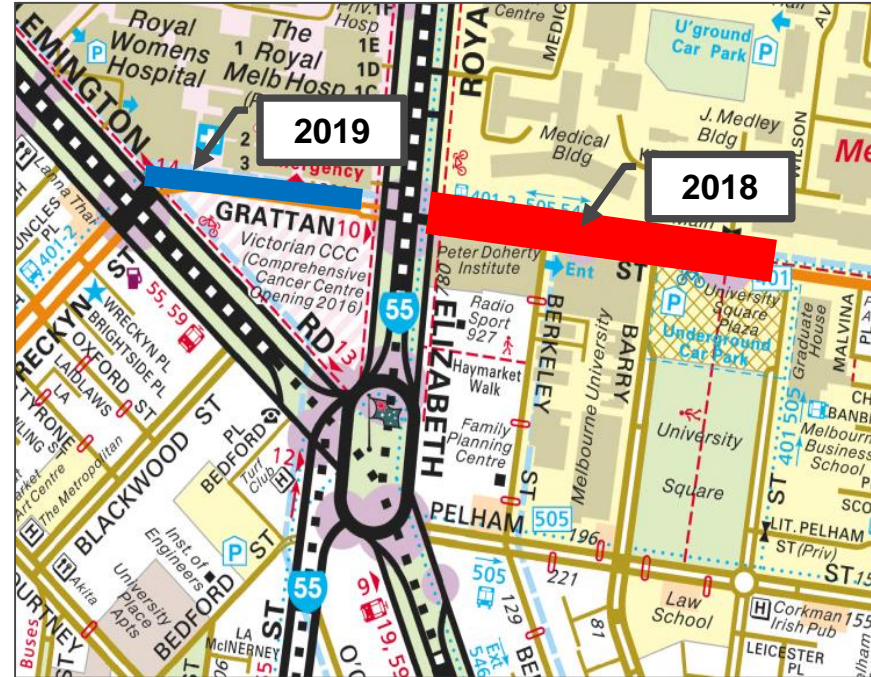


SUNBURY TO CRANBOURNE / PAKENHAM RAIL CORRIDOR PLANNING PROCESS

- MMRA will be seeking feedback from Councils, stakeholders and broader community along the Sunbury to Cranbourne / Pakenham rail corridor
- The draft planning documents will be publicly available and the community will be provided the opportunity to comment
- Comments/Feedback received will be provided to the Minister for Planning for consideration as part of the planning process
- Community and stakeholders will be notified about the planning process via the following channels:
 - Project website and social media
 - Letter box drops and eNews
 - Briefings

ROAD CLOSURES

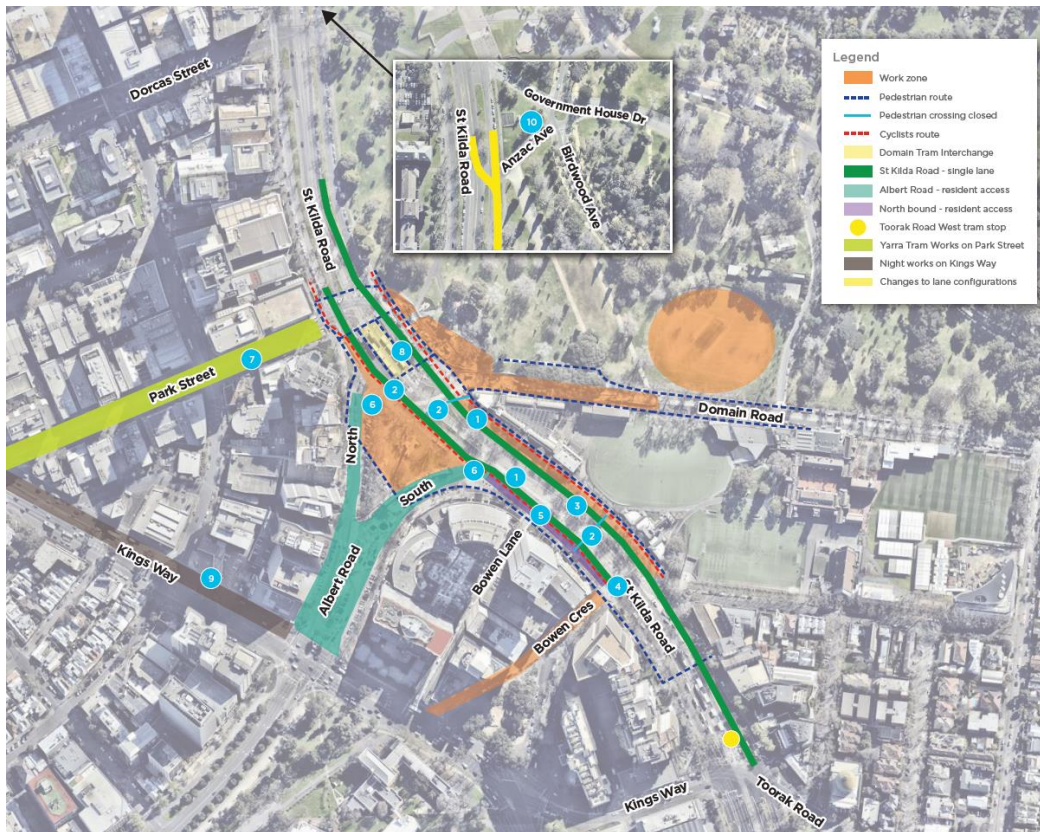
- Works on Grattan Street for up to 5 years to build Parkville Station
 - From February 2018, Grattan Street will be closed between Royal Parade and Leicester Street
 - From January 2019, Grattan Street closed westbound between Flemington Road and Royal Parade



ROAD CLOSURES

- Works on St Kilda Road over the next 4 years to build Anzac Station
 - From February 2018, Traffic reduced to a single lane in each direction between Dorcas Street and Toorak Road West
 - Motorists should allow up to 15 minutes extra travel time if traveling via this part of St Kilda Road
 - Pedestrian and cycling access will be maintained along St Kilda Road while Metro Tunnel works are underway

ROAD CLOSURES



The following changes will be progressively delivered from mid-January to April 2018 in the lead up to the major tram works, subject to planning approvals.

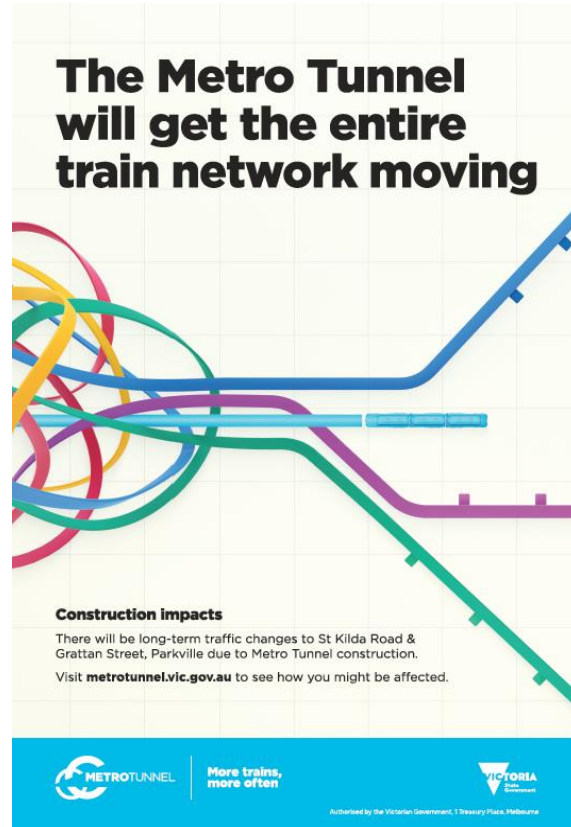
- 1 St Kilda Road**
 - Reduced to one lane in each direction between Dorcas Street and Toorak Road West
- 2 Pedestrian crossing closures**
 - St Kilda Road pedestrian crossing closed at Domain Road. Crossing via Park Street
 - Western pedestrian access to Domain Tram Interchange via crossing at Park Street
 - Bowen Lane tram stop pedestrian access closed.
- 3 Tram Stop**
 - Bowen Lane tram stop closed from mid-January
- 4 Bowen Crescent**
 - Left-in/left-out access off St Kilda Road service lane
- 5 Bowen Lane**
 - Left-in/left-out access off St Kilda Road service lane
- 6 Albert Road**
 - No exit to St Kilda Road, exit via Kings Way
 - Left access from St Kilda Road only via Albert Road South
- 7 Park Street**
 - Full closure to traffic and trams between St Kilda Road and Kings Way from 2-7 February for Yarra Trams tram stop works
 - Buses replacing trams during full closure
 - Traffic management in place at other times between mid-January and mid-February.
- 8 Domain Interchange**
 - Domain Interchange will remain open until the major tram works in April 2018
- 9 Kings Way**
 - Night works on Kings Way city bound north of Albert Road from mid-late January to improve traffic flow while St Kilda Road is reduced to one lane in each direction
- 10 St Kilda Rd near Government House Drive**
 - The southbound St Kilda Rd lane configuration adjacent to Government House Drive will be modified to encourage motorists into the service lane, in preparation for future construction stages.



PUBLIC COMMUNICATIONS CAMPAIGN

- Advertising campaign (TVC, radio, print, outdoor)
- VMS, signage, wayfinding
- Briefings with key stakeholders, institutions, schools, residents, businesses
- Travel Demand Management
- Pop ups on St Kilda Road, Grattan Street, Uni Orientation Day
- Metro Tunnel eNews to subscribers
- Works notifications – specific to local stakeholders
- Social media and website updates (inc on VicRoads, PTV, Yarra Trams' channels)
- Coordination with major events i.e. Grand Prix



A poster with a light green grid background. At the top, the headline reads 'The Metro Tunnel will get the entire train network moving' in bold black text. Below the headline is a graphic of colorful, overlapping lines representing train routes. At the bottom left, the text reads 'Construction impacts' followed by 'There will be long-term traffic changes to St Kilda Road & Grattan Street, Parkville due to Metro Tunnel construction. Visit metrotunnel.vic.gov.au to see how you might be affected.' The bottom of the poster has a blue footer containing the METROTUNNEL logo, the slogan 'More trains, more often', the Victorian Government logo, and the text 'Authorised by the Victorian Government, 1 Treasury Place, Melbourne'.

More trains,
more often



Authorised by the Victorian Government, 1 Treasury Place, Melbourne

Arden Street Water Mains Renewal Project



City West Water

Overview

- The existing water main located under Arden and Lloyd Street in North Melbourne was built in 1889 and is now coming to the end of its operational life.
- The 860 metre water main replacement is part of the broader City West Water renewal program
- Works commenced on 18 January 2018 with expected completion by the end of May 2018.

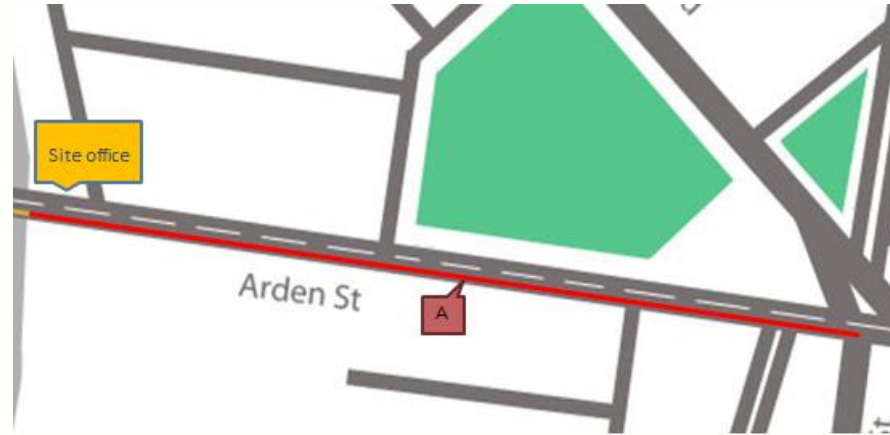
- The works will ensure continued supply of quality water to residents and caters for the future growth of the Arden Street precinct



Worksite A

Construct a new
300mm main on a new
alignment down Arden
Street

Work sites operate in
50 metre sections
utilizing open cut
trench



Worksite B

Renew existing
300mm main on
same alignment on
underside of bridge
crossing Moonee
Ponds Creek



Worksite C

Construct new
225mm main on
new alignment
along Lloyd Street



Will this affect traffic, bicycles or access to properties?

- Night works are required at the intersection of Arden and Dryburgh Streets for one week
- The replacement works require excavation of the road between the hours of **9.00 am and 4.00 pm from 1 February 2018.**
- The timing of the works was guided by discussion with VicRoads to avoid peak times.
- The Bicycle Network has also indicated that it is busier in the evening peak and supports during these hours



Will this affect traffic, bicycles or access to properties?

- The replacement works require open cut trenches
- Works are expected to move along Arden Street at between 30 to 50 metres per day
- There are traffic management measures in place to safely guide vehicles around the work site
- Traffic management is in place to ensure cyclist safety
- At the end of each working day, the trench will be backfilled and covered with metal plates



Works timeframe

- Construction commenced 18 January 2018
- Completion expected end of May 2018

What happens next

- Align traffic management plan with other nearby works such as Metro Tunnel (JH and Beon Energy)
- Work with Powercor closely (given proximity of water mains to their assets)
- City West Water has consulted with the Bicycle Network to seek advice on how best to support cyclists safety and the distribution of information to the broader network of cyclists.



Questions?

Thank you



City West Water



JOHN HOLLAND MANAGING CONTRACTOR - EARLY WORKS

Andrew Browne, Project Engineer – Western Tunnel Entrance and North Melbourne, John Holland





WESTERN TUNNEL ENTRANCE

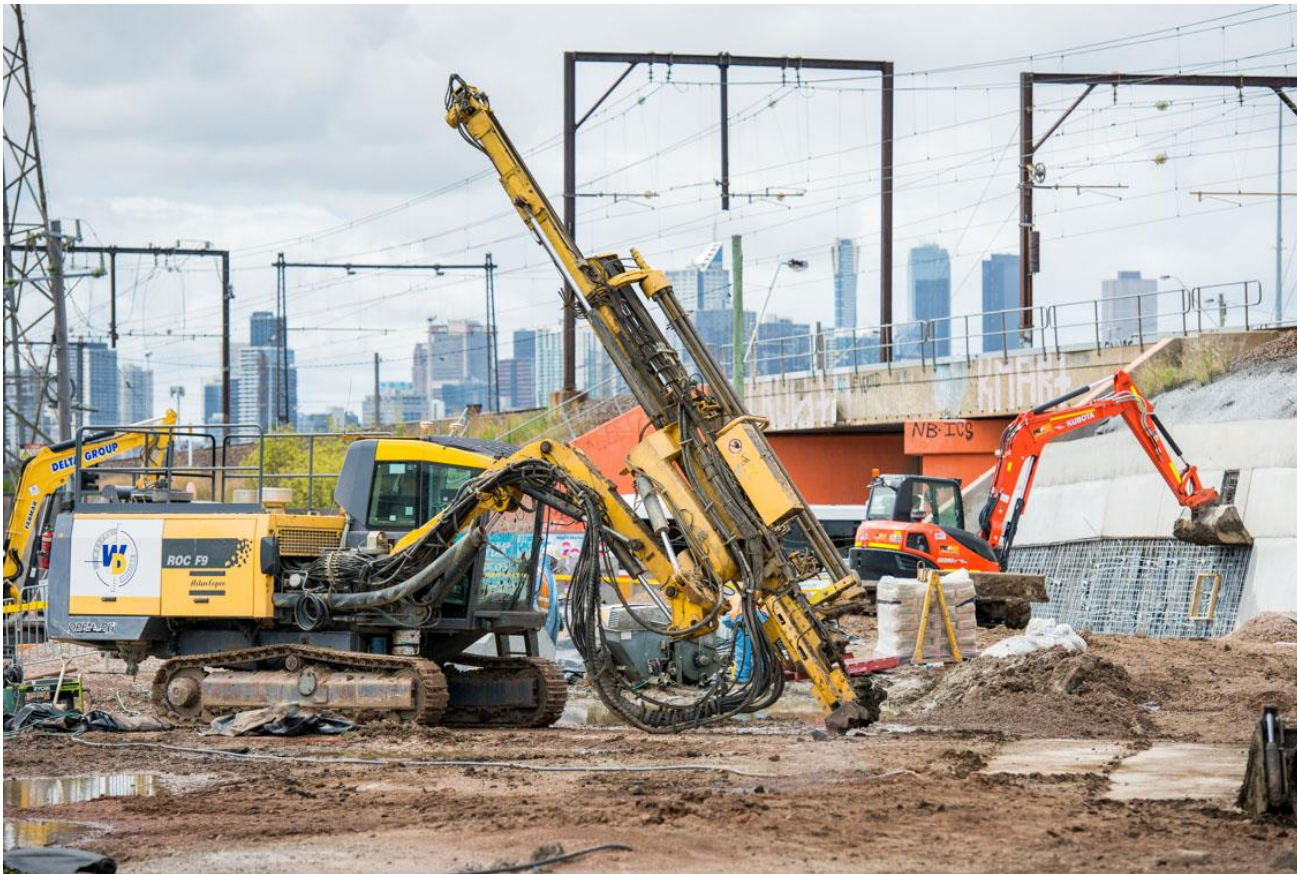
HV TOWER RELOCATION



HV TOWER RELOCATION



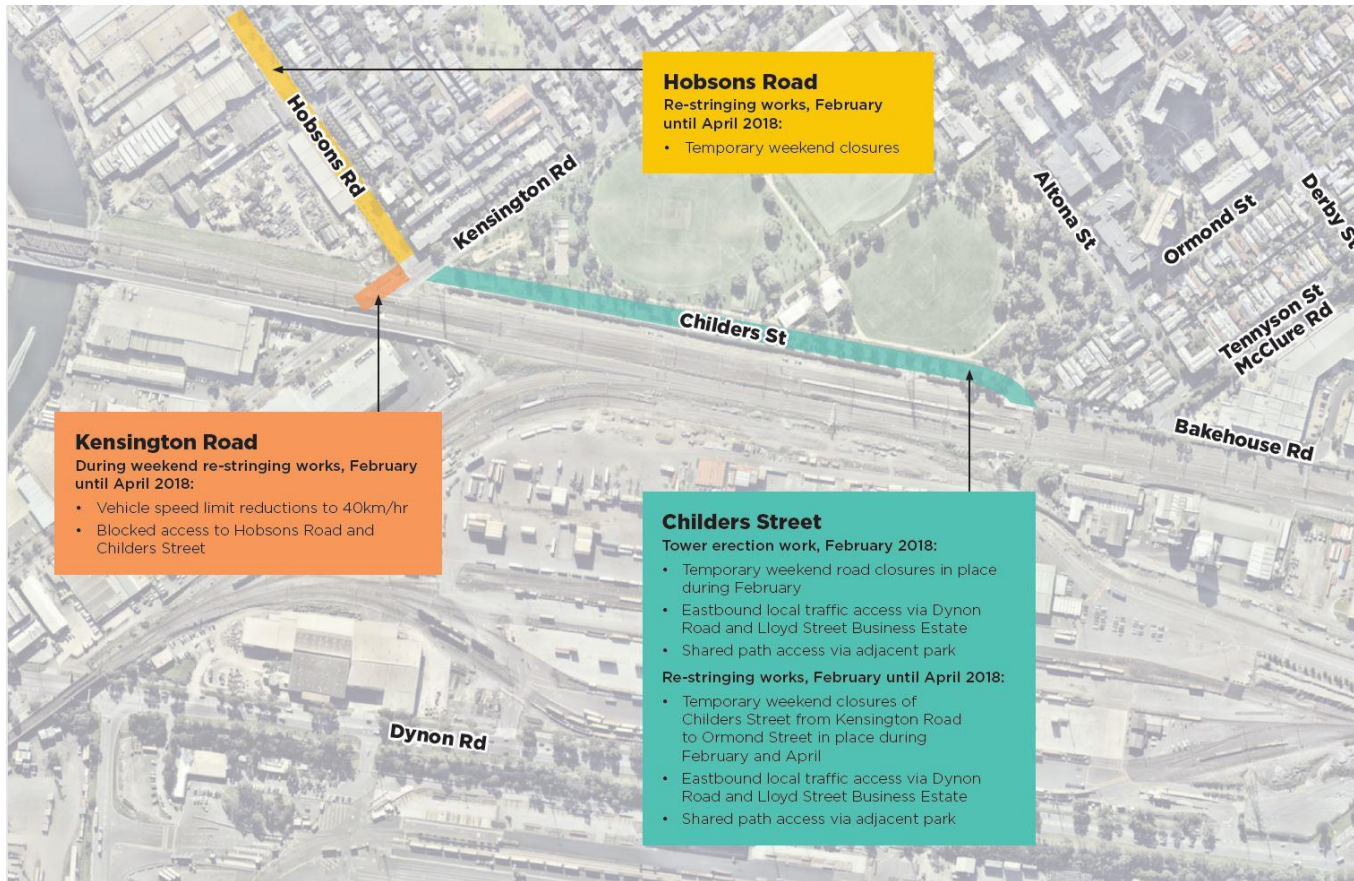
HV TOWER RELOCATION



HV TOWER RELOCATION



TRAFFIC IMPACTS UPDATE





NORTH MELBOURNE

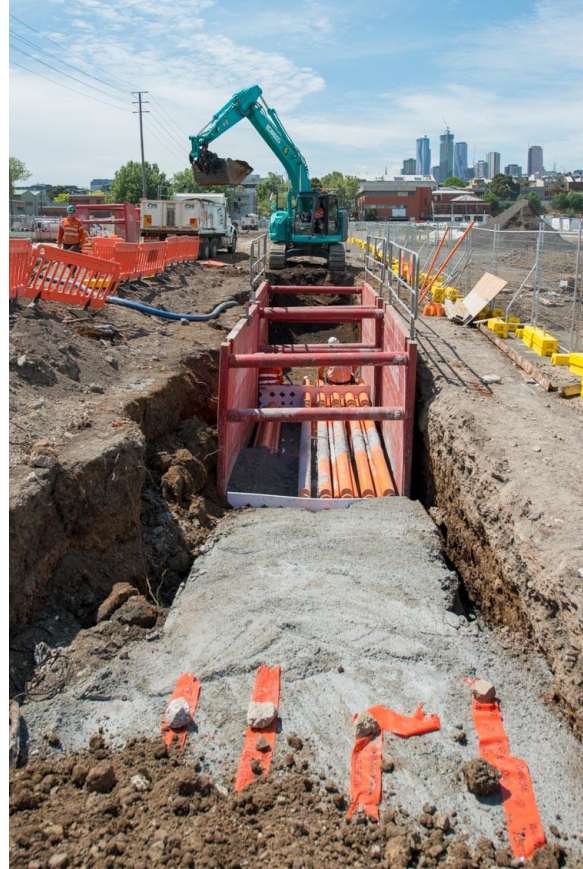
BUILDING DEMOLITION



SERVICE RELOCATIONS



SERVICE RELOCATIONS





QUESTIONS?

CROSS YARRA PARTNERSHIP



DEVELOPMENT PLANS



DRAFT DEVELOPMENT PLAN FEEDBACK



**480 info
session
attendees**



**3100+
webpage
visits**



**1507
responses
provided**



**Newspaper
advertisements**



**32,500
letters to
households
and
businesses**

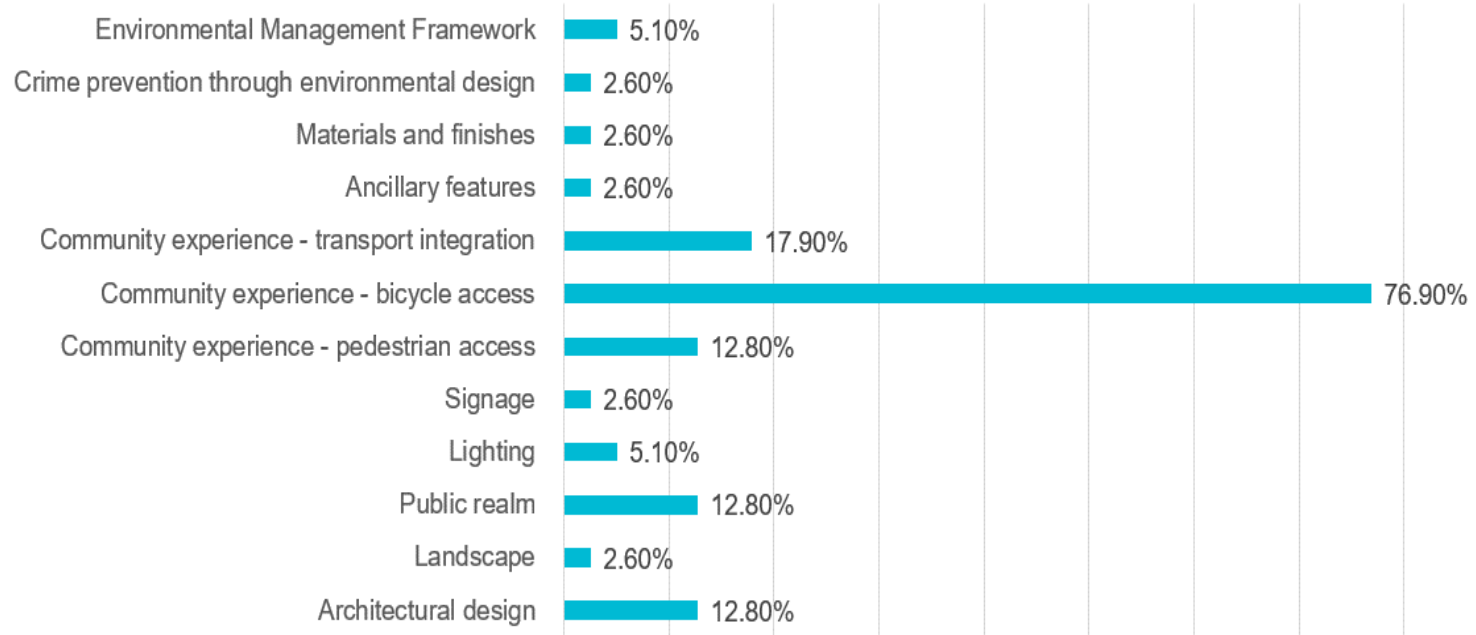


**stakeholder
meetings**



**e-
newsletters**

WHAT WE HEARD – NORTH MELBOURNE STATION



DEVELOPMENT PLAN REVIEW PROCESS

- CYP reviewing each submission received – line by line
- CYP preparing comment and response register as part of consultation summary
- CYP Consultation Summary submitted to the Minister for Planning for consideration via Department of Environment, Land, Water and Planning
- An approved Development Plan is required before main works start (anticipated approval March)
 - Approval doesn't signal end of process – design development and stakeholder consultation continues.

WESTERN PORTAL DEVELOPMENT PLAN

- CYP currently developing Western Portal Development Plan for CYP scope
- Will include shaft construction area and emergency egress building only
- Additional built infrastructure in the area (i.e Childers Street retaining wall and landscaping) will to be covered in RIA Development Plan

CYP Early Works



EARLY WORKS

- Early Works are referred to as works that can commence prior to the approval of Development Plans.

Type of Early Works	Applicable to Precinct 2 (Western Portal)	Applicable to Precinct 3 (North Melbourne)
Utility Service Relocations		
Utility Service Relocations	NO	NO
Site Preparation Works		
Monument and Plaque Removal/Relocation	NO	NO
Tree Removal	YES	YES
Road and Transport Network Changes	YES	NO
Shaft Construction	NO	NO
Property Demolition Works	YES	NO
Associated construction activities	YES	YES

EARLY WORKS PLAN

Early Works Plan has been approved by the Minister for Planning.

Amendments following public exhibition/consultation (prior to submission) for the Western Portal precinct include:

- Note removal of *up to* 17 trees – subject to MMRA approval
- Trees on private property identified as potentially impacted due to close vicinity to site establishment works - subject to arboriculture assessment prior to and during works
- Address of property requiring demolition corrected to 135 Ormond Street, Kensington
- Include indicative design of the proposed roundabout (subject to further consultation with local residents, businesses and other key stakeholders)
 - Roundabout to facilitate project truck movements in and out of Childers Street worksite

SITE ENVIRONMENTAL IMPLEMENTATION PLAN (SEIP)

- These documents provide summary of the site level content of the Construction Environmental Management Plan (CEMP) and management plans that is specific to a particular precinct
- Information in the plans may include but is not limited to the following:
 - Precinct activities
 - Spill kit locations
 - Sensitive stakeholders
 - **Heritage areas including non-Aboriginal heritage sites**
 - **Vegetation that requires protection**
 - **Traffic routes**
 - Re-fuelling points
 - Wash down bays
 - **Environmentally sensitive areas on or near a project site**
 - Locations of environmental controls
 - Buffer zones or ‘no-go zones’
 - **Monitoring locations.**
- Control measures identified in the SEIPs must be installed and fully operational prior to commencement of any works to which the relevant SEIP relates.

CYP 2018 lookahead



TRANSPORT / TRAFFIC MANAGEMENT PLANS – NORTH MELBOURNE

DOCUMENTS

- Transport Management Plan (Project wide) – MMRA Approval pending
- Arden Precinct Traffic Management Plan – ready for IR and IEA review – approval before main works commencement
- Worksite Traffic Management Plan – 30 days prior to main works commencement

REVIEWERS

- Road Authorities
- MMRA
- Independent Reviewer (IR)
- Independent Environmental Auditor (IEA)
- Key Stakeholders

TRANSPORT / TRAFFIC MANAGEMENT PLANS – WESTERN PORTAL

DOCUMENTS

- Transport Management Plan (Project wide) – MMRA Approval pending
- Western Portal Traffic Management Plan – internal review and stakeholder consultation used to develop plan

STUDIES – 26 February discussion with community

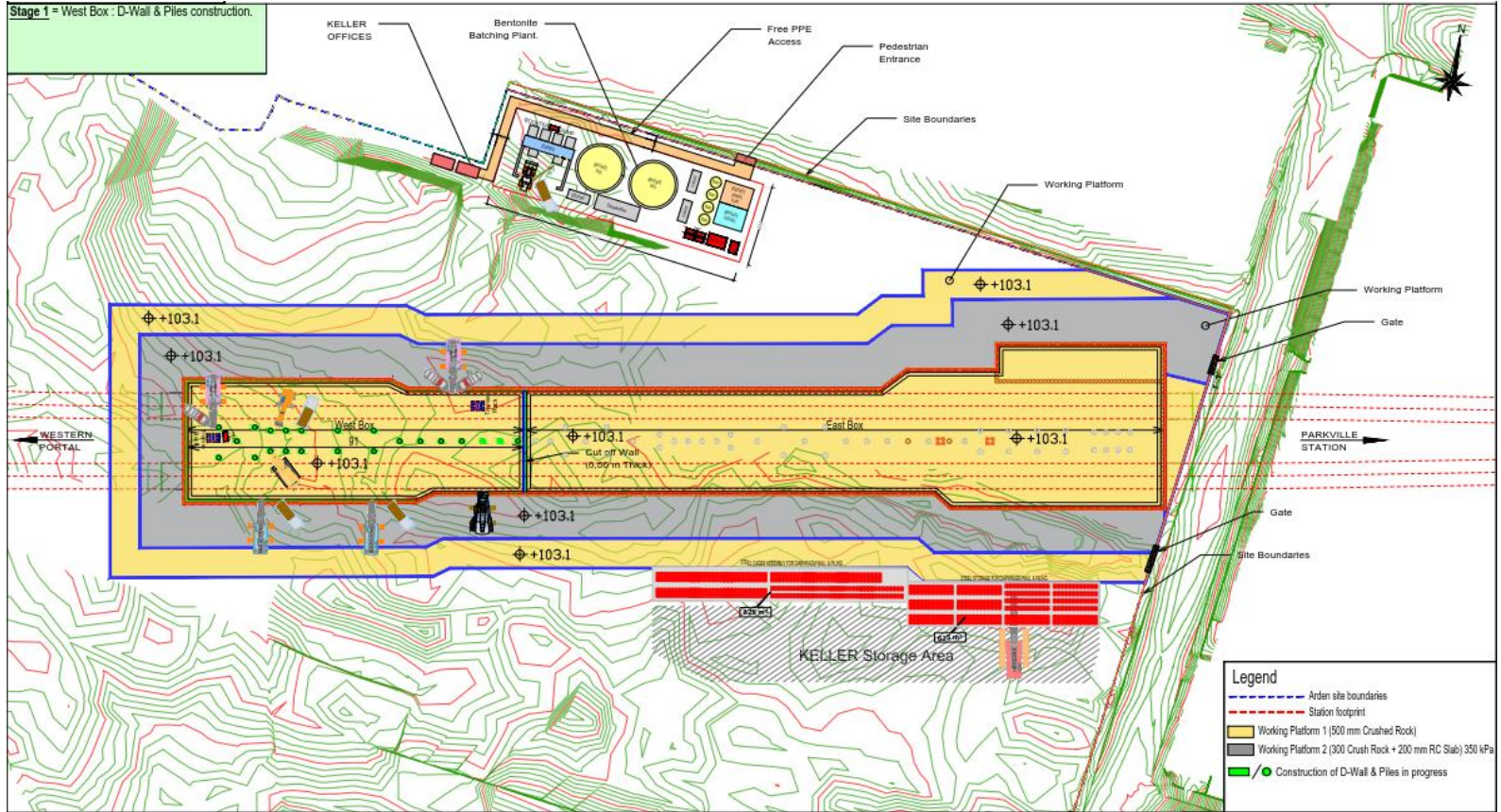
- Traffic and pedestrian survey soon underway
- Over height vehicle count
- Traffic Impact Analysis – shuttle flow on Childers Street
- First Principles Assessment - Childers Street / Kensington Road intersection functionality
- First Principles Assessment - Traffic impacts – wider network, Macauley & Dynon Road
- Parking changes – South Kensington station (to facilitate drop-off & pick-up)
- Swept path analysis Derby, Ormond, Tennyson

2018 LOOK AHEAD – NORTH MELBOURNE PRECINCT

EARLY WORKS (January 2018 to mid 2018)

- Site Hoarding extension, fencing repairs
- Completion of baseline surveys, Geotech investigations, environmental works
- Site Safety Works and Services installations
- Pile removal completion
- Set-up of temporary offices
- Establishing bentonite (clay) farm for Diaphragm Wall works
- Piling platform construction
- Guide walls
- Receiving and readying major plant on site

2018 LOOK AHEAD – NORTH MELBOURNE PRECINCT

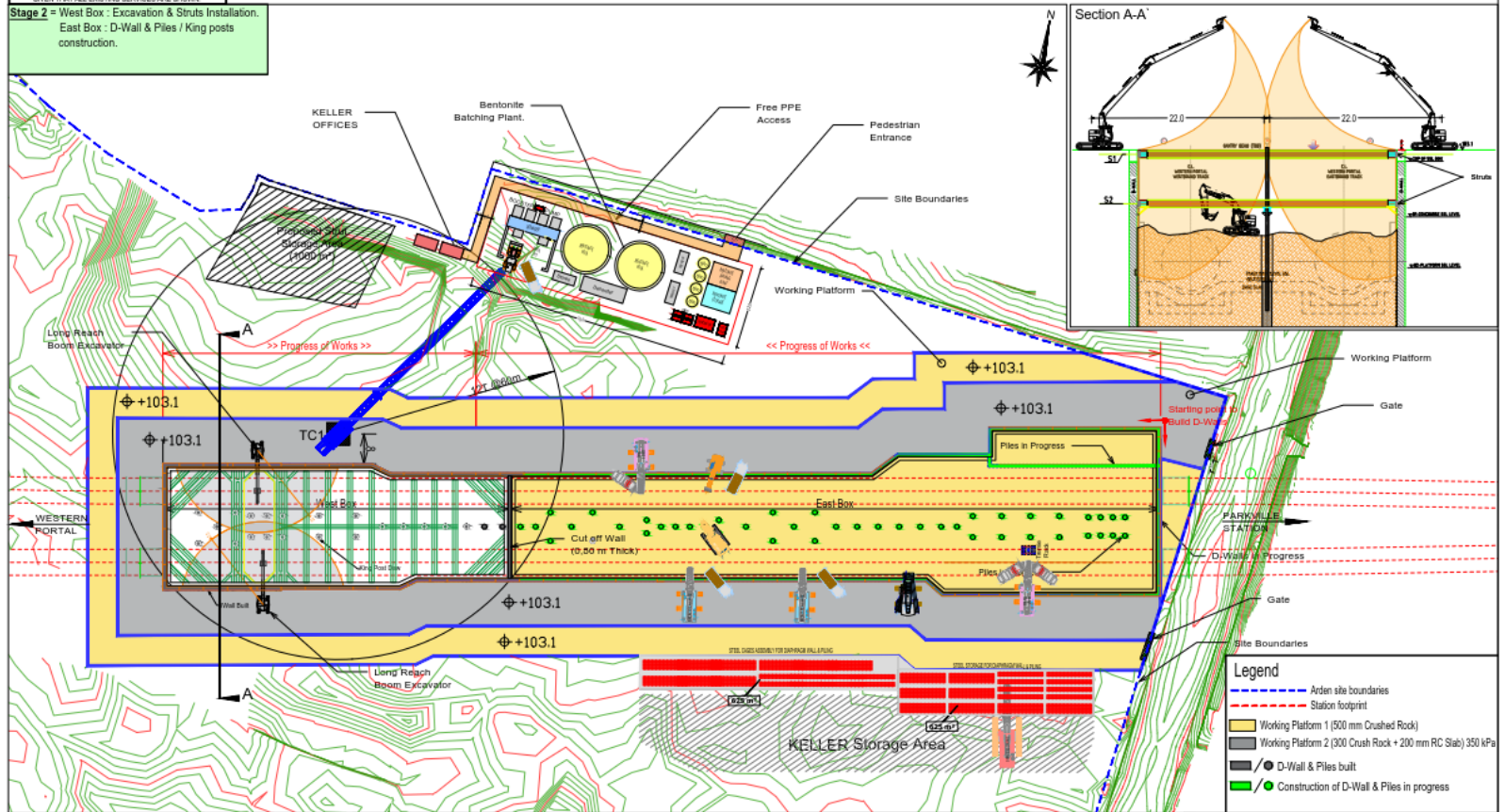


2018 LOOK AHEAD – STATION CONSTRUCTION

MAIN WORKS (April 2018 to 2023 – summary 2018 only below)

- Diaphragm Walls and Tension Pile construction
- Crane installation
- Box Excavation (Western end box priority) and strutting installation
- Construction of base slab (west end box)
- Installation of main site offices
- Ongoing excavation and strutting of main (eastern) box
- Establishment of Tunnel support facilities (STP, batch plant, haul roads, workshop and stores)
- Installation of concrete batch plant
- Receiving the TBM on site

2018 LOOK AHEAD – STATION CONSTRUCTION



BOX CONSTRUCTION – D-WALLS



Grab

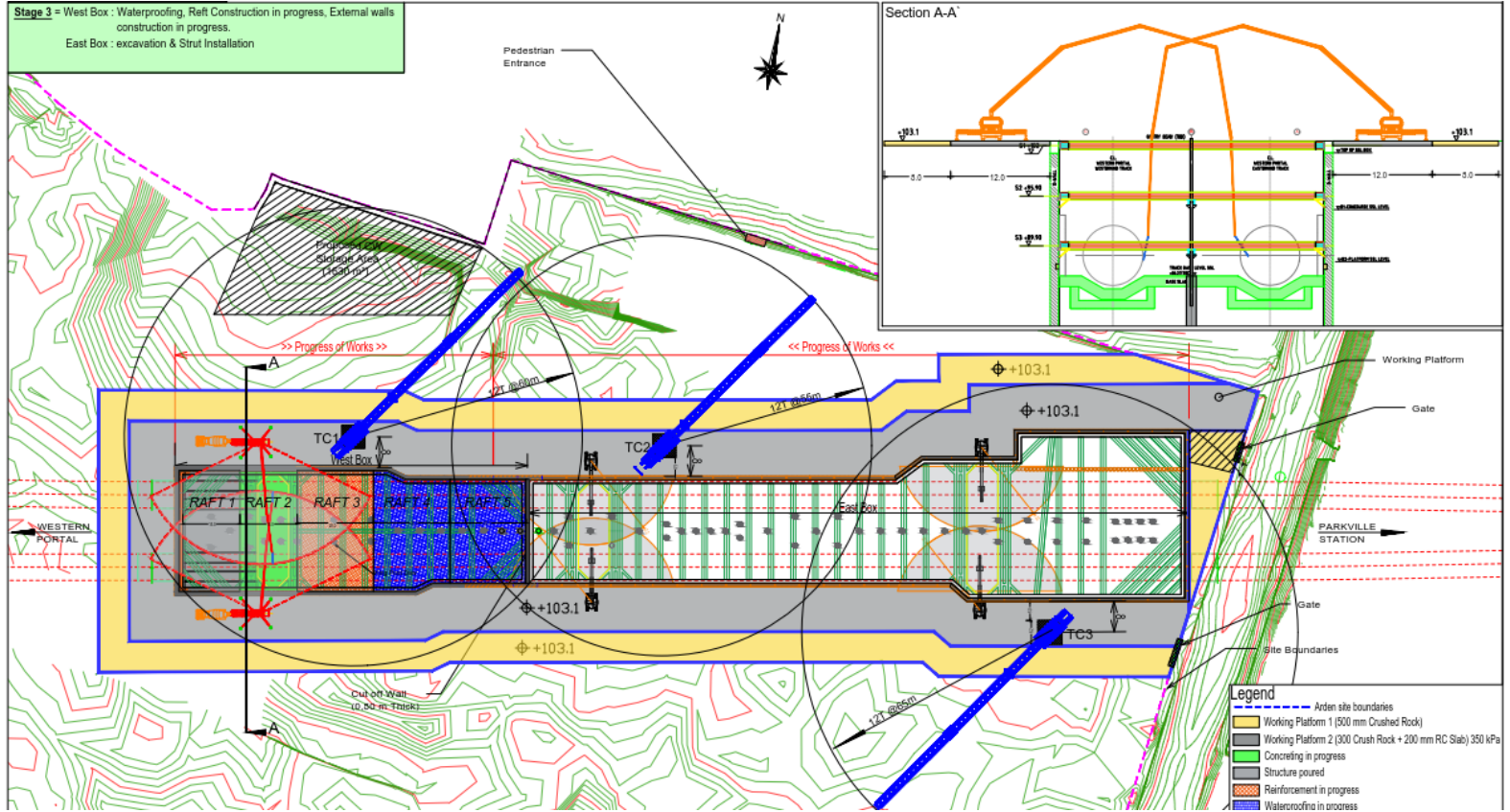


Cutter



Placing reinforcement and concreting

2018 LOOK AHEAD – NORTH MELBOURNE STATION



CONSTRUCTION SEQUENCE & INDICATIVE DATES - NORTH MELBOURNE PRECINCT

		2018											
		JAN	FEB	MAR	APR	MAY	JUN	JUL	AUG	SEP	OCT	NOV	DEC
	1. Issue IFC				■								
	2. Install hoarding			■									
	3. Construction Site offices and amenities			■	■	■	■						
	4. Platform construction		■	■									
WEST SIDE													
	5. D-Wall and Piling construction				■	■	■						
	6. Excavate and strut to base level							■	■	■			
	7. Base slab construction										■	■	
	8. TBM assembly												■
	9. TBM Excavation from Arden to Western Portal												
	10. TBM retrieval												
EAST SIDE													
	11. D-Wall and Piling construction							■	■	■	■		
	12. Excavate and strut to base level											■	■
	13. Base slab construction												
	14. TBM re-assembly												
	15. TBM Excavation from Arden to Parkville												

2018 LOOK AHEAD – WESTERN PORTAL PRECINCT

EARLY WORKS (March 2018 – mid 2018)

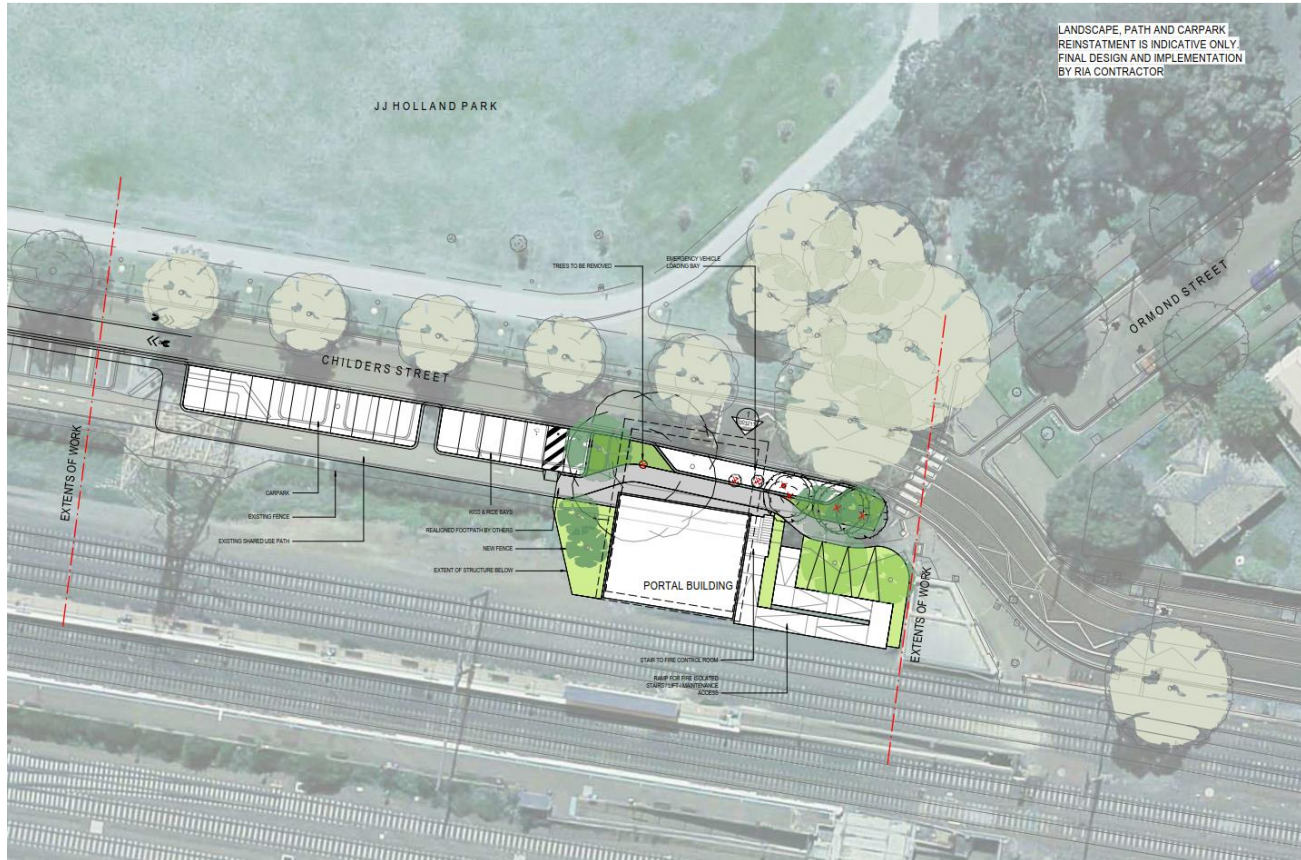
Installation of hoarding and fencing

- Tree Removal within worksites
- Demolition works – 135 Ormond Street
- Road changes – April to May 2018
- Site Establishment works and associated services works
- Piling platform construction

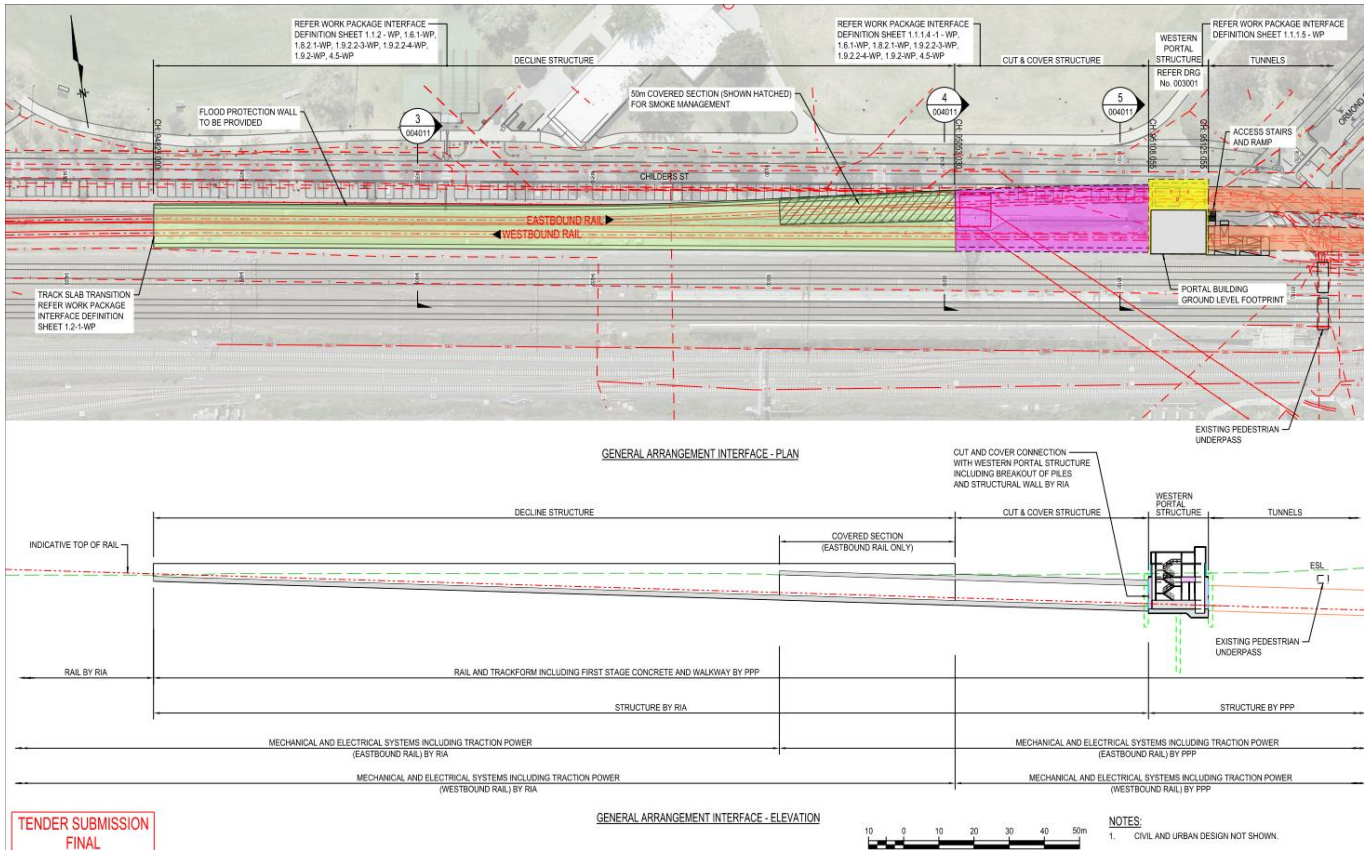
MAIN WORKS (after Development Plan Approval - (mid 2018 – 2018 summary only)

- Piling works to form Box Structure
- Excavation and strutting to base level

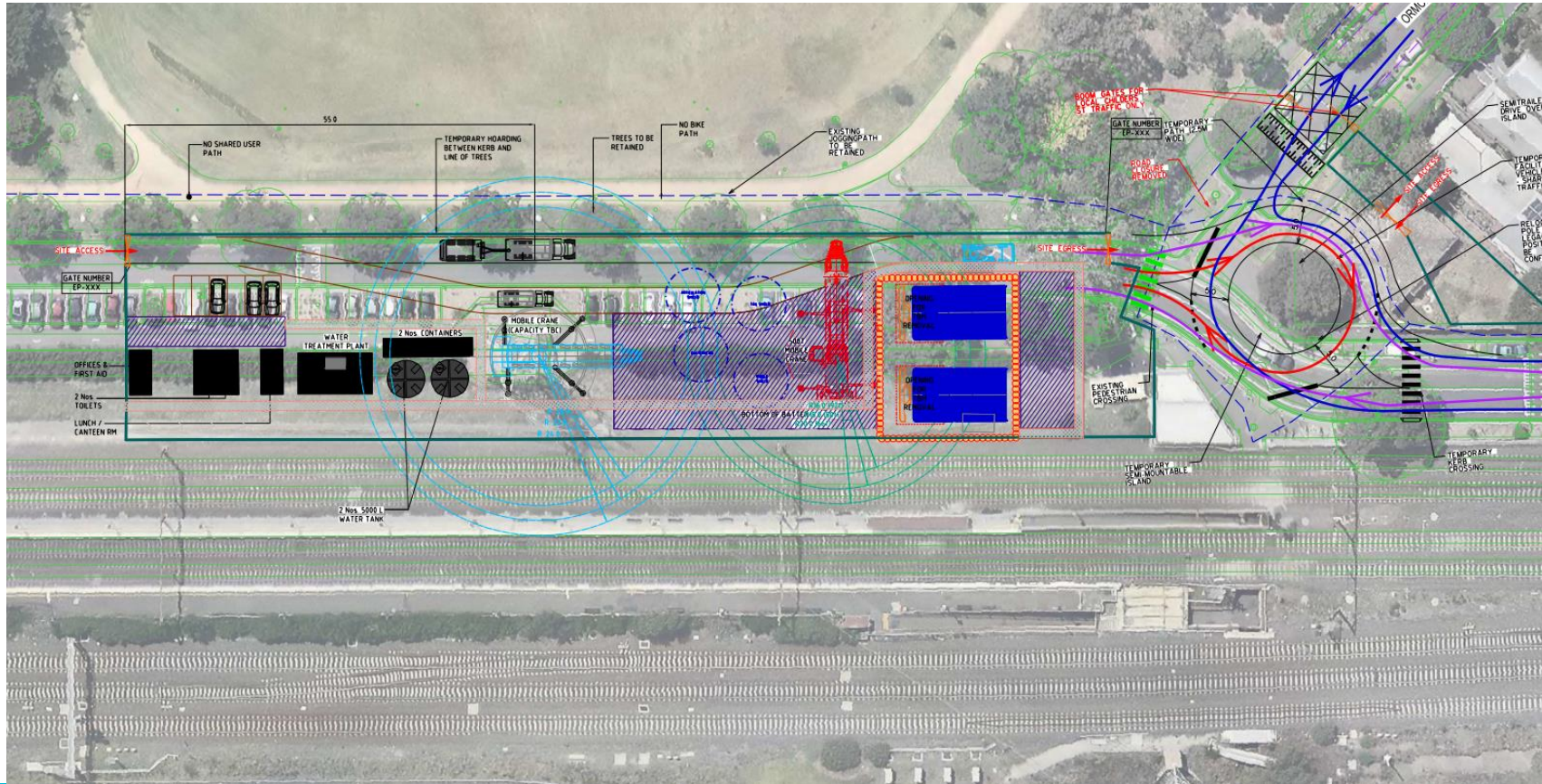
WESTERN PORTAL (INDICATIVE ONLY)



WESTERN PORTAL – SCOPE SPLIT



WESTERN PORTAL – DURING 2019 (TBM DISMANTLING)



CONSTRUCTION SEQUENCE & INDICATIVE DATES – WESTERN PORTAL

		2018											
		JAN	FEB	MAR	APR	MAY	JUN	JUL	AUG	SEP	OCT	NOV	DEC
1. Issue IFC													
2. Install hoarding			■										
3. Construction Site offices and amenities				■	■								
4. Piling platform construction					■	■							
5. Piling construction						■	■	■	■				
6. Excavate and strut to base level										■	■	■	■
7. TBM retrieval													



QUESTIONS?



DISCUSSION / OTHER BUSINESS

