



CBD COMMUNITY REFERENCE GROUP

CROSS YARRA PARTNERSHIP
MAY 2019





MAY CBD COMMUNITY REFERENCE GROUP

Melinda Kelly, State Library Stakeholder Engagement Manager, Cross Yarra Partnership
Blythe Chidgey, Town Hall Station Stakeholder Engagement Manager, Cross Yarra Partnership
Michael Lavender, Traffic Manager, CBD South Precinct
Mary Parker, Director Communications and Creative

Friday 17 May 2019



Construction partner:



AGENDA

1. Town Hall Precinct Update
2. Vehicle Access Update
3. State Library Precinct Update
4. La Trobe Street service relocations
5. Metro Tunnel Creative Program Update

TOWN HALL STATION UPDATE





CITY SQUARE

CITY SQUARE – WORKS UPDATE

Activity	Location	May	Jun	Jul	Aug	Sept	Oct	Nov	Dec
Deck construction	Internal	●—————●			●				
Slab removal	Internal			●———●	●———●				
Acoustic shed construction	Internal		●—————●						
Excavation	Internal				●—————●				
Collins Street driveway	External		●———●						
Swanston Street driveway	External		●———●						

CITY SQUARE – OUT OF HOURS WORKS

Vehicle movements

Deliveries, waste and spoil removal ongoing until June 2019

- Monday to Fridays 6pm-10pm

Deck construction works

- Monday to Fridays 7am-10pm
- Saturday, 7am-5pm



FLINDERS QUARTER

FLINDERS QUARTER – WORKS UPDATE

Activity	Location	May	Jun	Jul	Aug	Sept	Oct	Nov	Dec
Cocker Alley works	External	—●							
Scott Alley works	External	—●							
Gantry installation	External		●—●						
Piling – Shaft A	Internal	—●							
Excavation – Shaft A	Internal			●—	—	—	—	—	●
Piling – Shaft B	Internal		●—	—	—	—	—	●	
Excavation – Shaft B	Internal							●—	

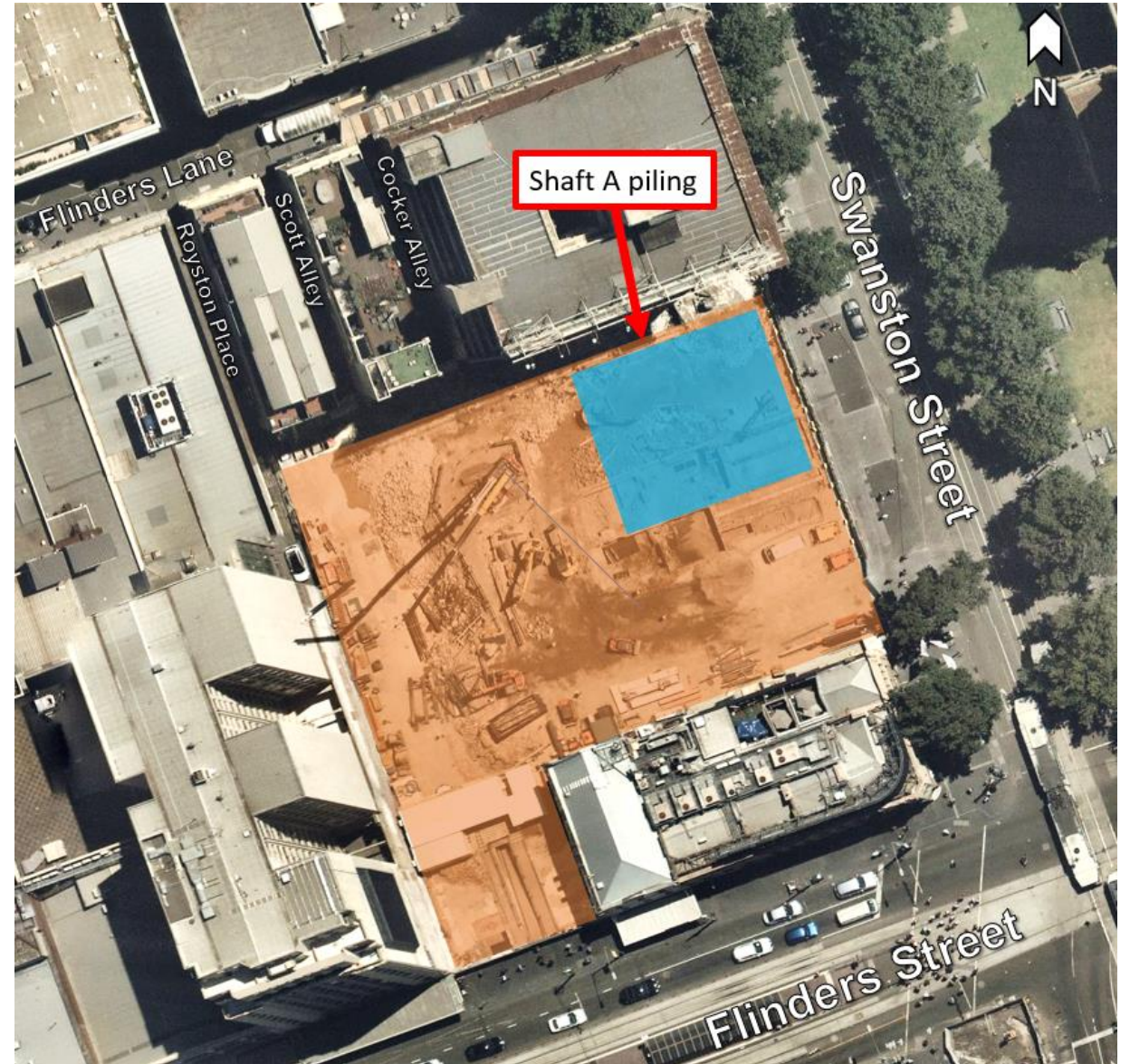
FLINDERS QUARTER – PILING UPDATE

May

- Shaft A piling has commenced
- 33/56 piles complete

Late May/June

- Shaft B piling – 180 piles to complete
- Complete by November 2019



FLINDERS QUARTER – OUT OF HOURS WORKS

Preparatory works (ongoing)

Material delivery and removal, concrete pours

- Monday to Fridays, 6pm – 10pm
- Saturdays, 1pm – 4pm

Pile cage deliveries

- Monday to Saturdays, 5am - 6:30am

Shaft A piling

- Saturdays, 1pm-5pm



FEDERATION SQUARE

FEDERATION SQUARE – WORKS UPDATE

Activity	Location	May	Jun	Jul	Aug	Sept	Oct	Nov	Dec
Piling	Internal	●—————●							
Deck construction	Internal			●—————●					
Acoustic shed construction	Internal				●—————●				
Excavation	Internal			●—————●					

↑
First 8 metres



May

- 9/65 piles complete
- Ongoing piling works until July 2019

FEDERATION SQUARE – OUT OF HOURS WORK

Piling works

Piling works will end at 10pm and concrete pours will continue until 12am

- 6am- 12am, Monday to Fridays
- 6am-6pm, Saturdays

Groundwater well installation works

Continuing throughout May

- Works will occur between 10pm and 5am, to minimise disruption to traffic

Permanent connection works

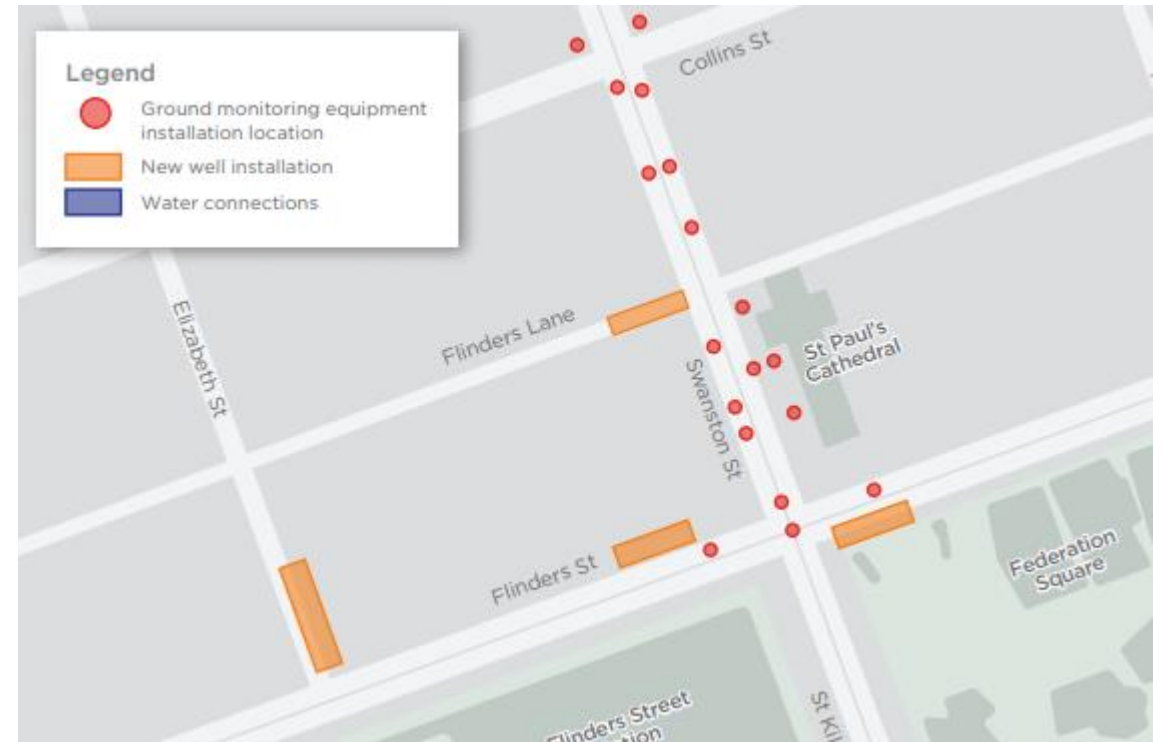
Connection involves scanning the area, saw-cutting, digging, and excavation works

- 7am – 6pm, Monday to Fridays

Ground monitoring equipment installation

Instruments will measure ground movement during tunnelling and excavation activities

- 9pm – 5am, ongoing until June 2019



VEHICLE ACCESS UPDATE

PEDESTRIAN GATES



- Installed in Parkville
- High-visibility wings
- Lockable control boxes with open/close push button
- Red/green LED traffic lights
- Amber audible warning strobe lights
- Emergency exit push button
- Safety sensors

COLLINS STREET DRIVEWAY

CYCLIST GATE

Footpath

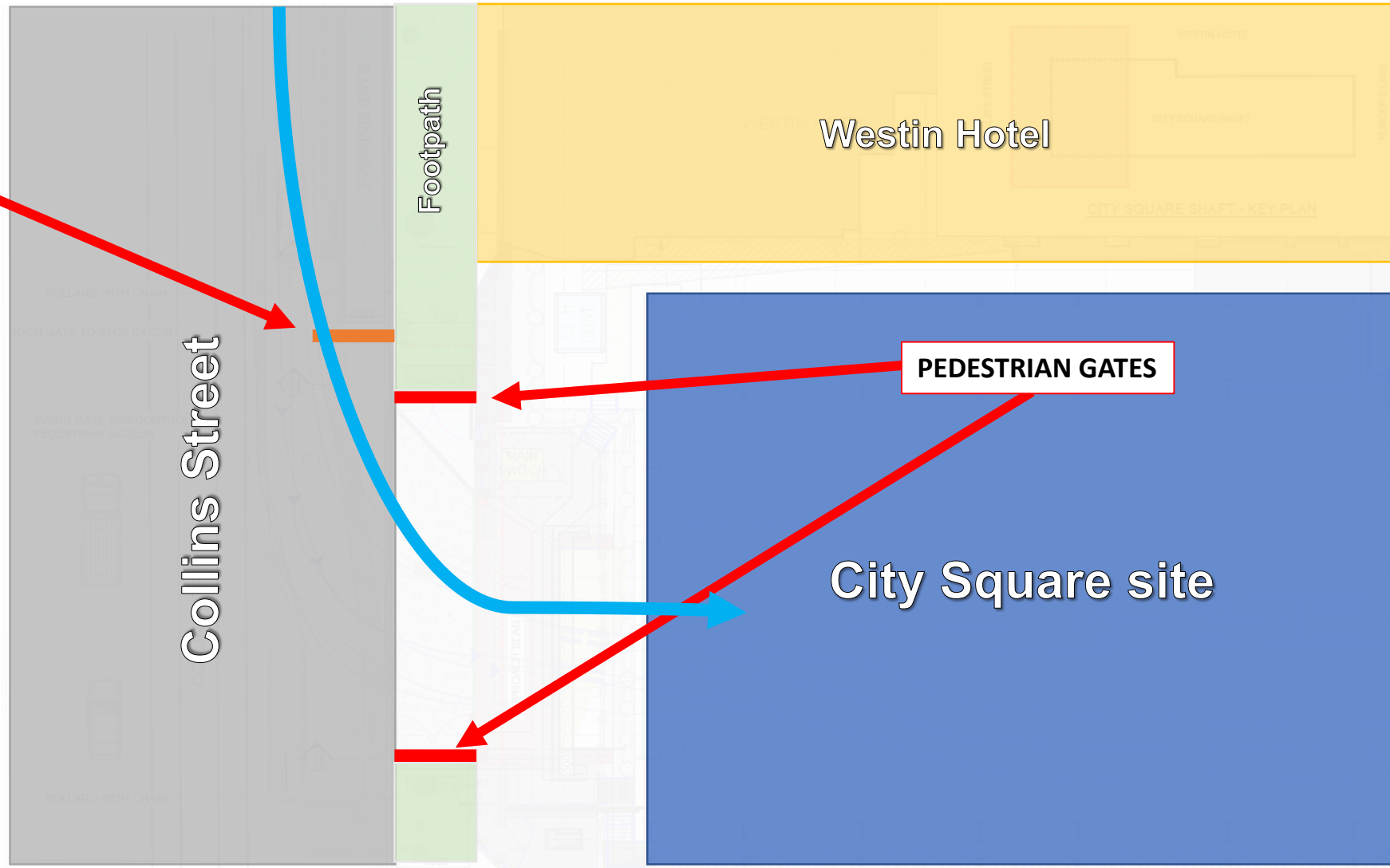
Westin Hotel

PEDESTRIAN GATES

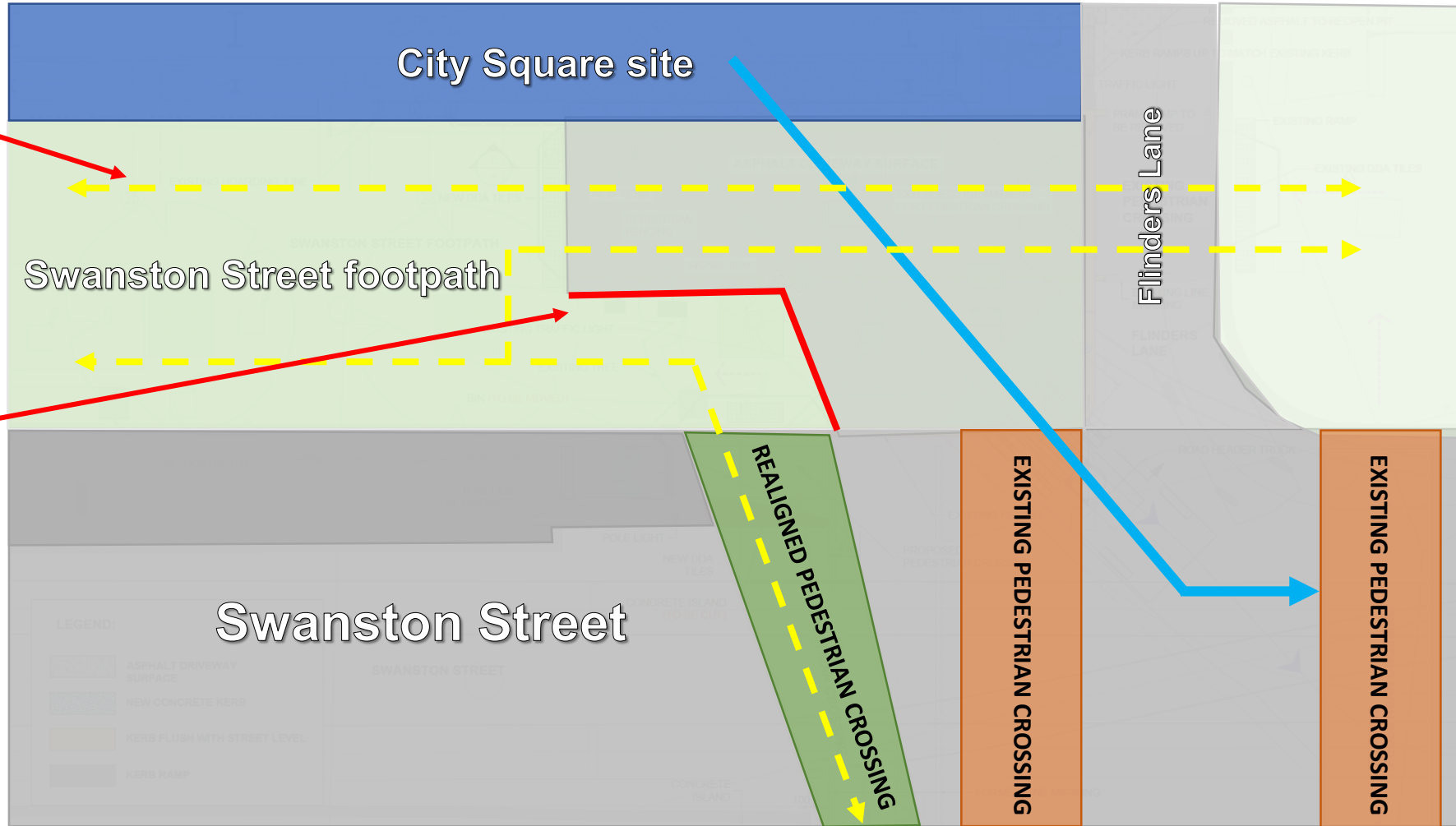
Collins Street

City Square site

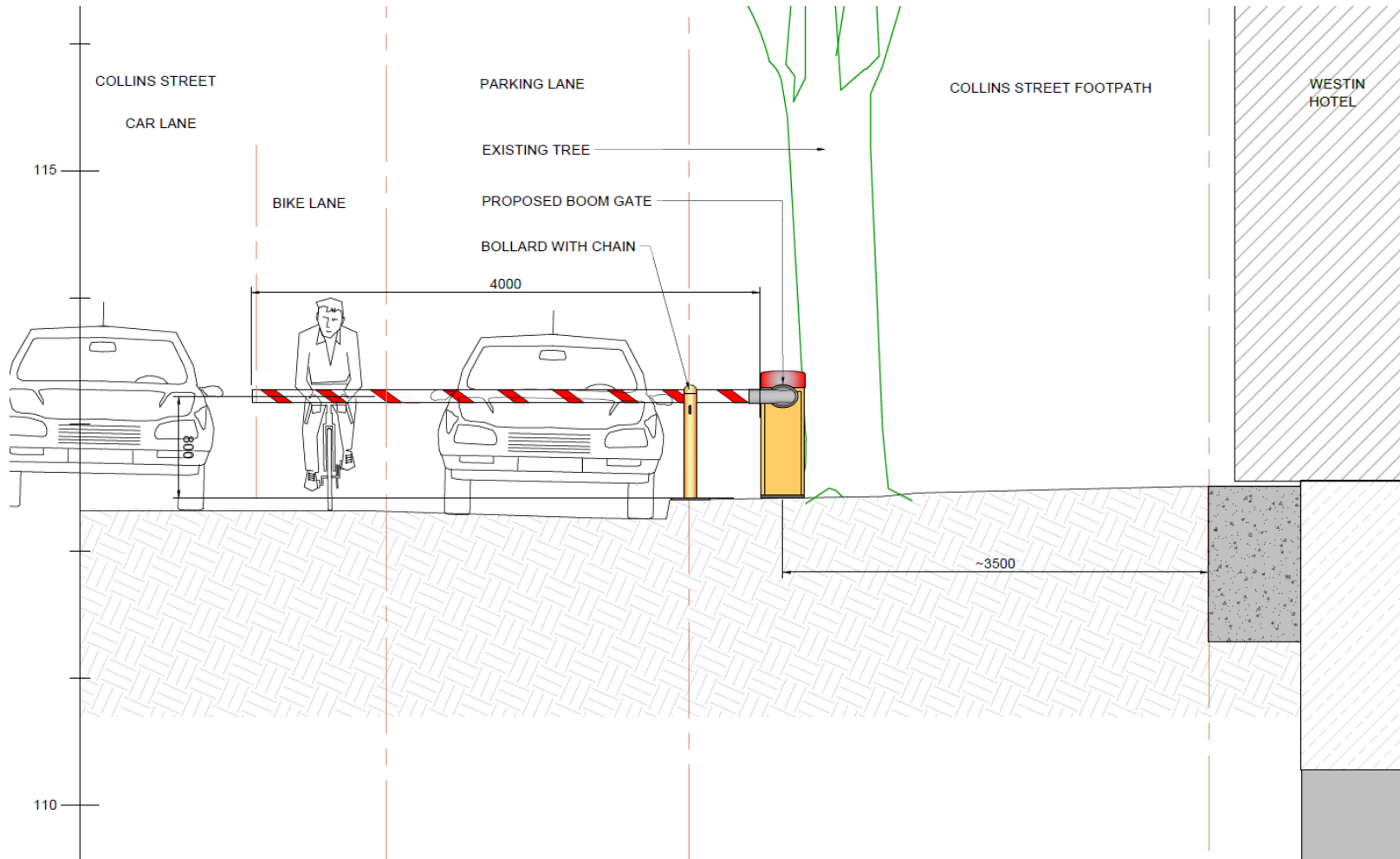
SWANSTON STREET



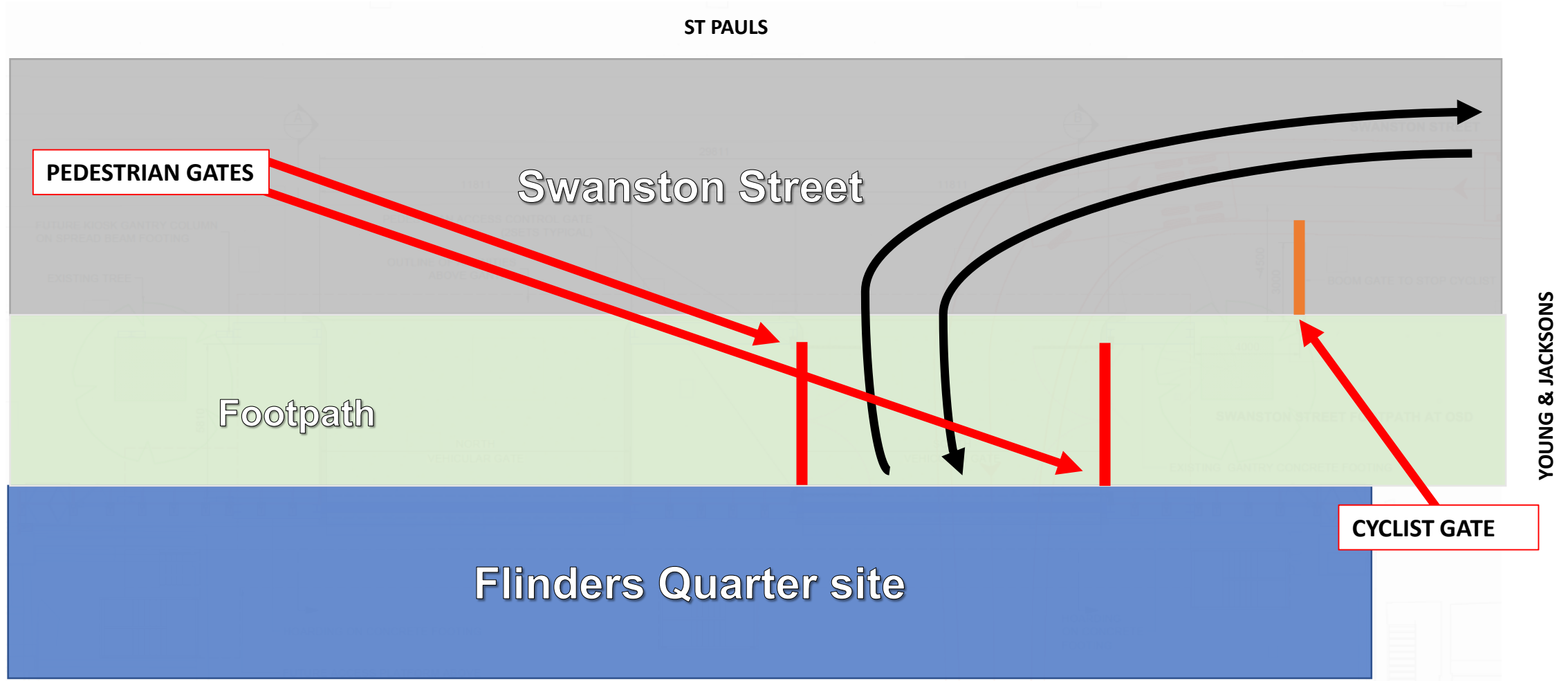
COLLINS STREET DRIVEWAY



COLLINS STREET CYCLIST GATE

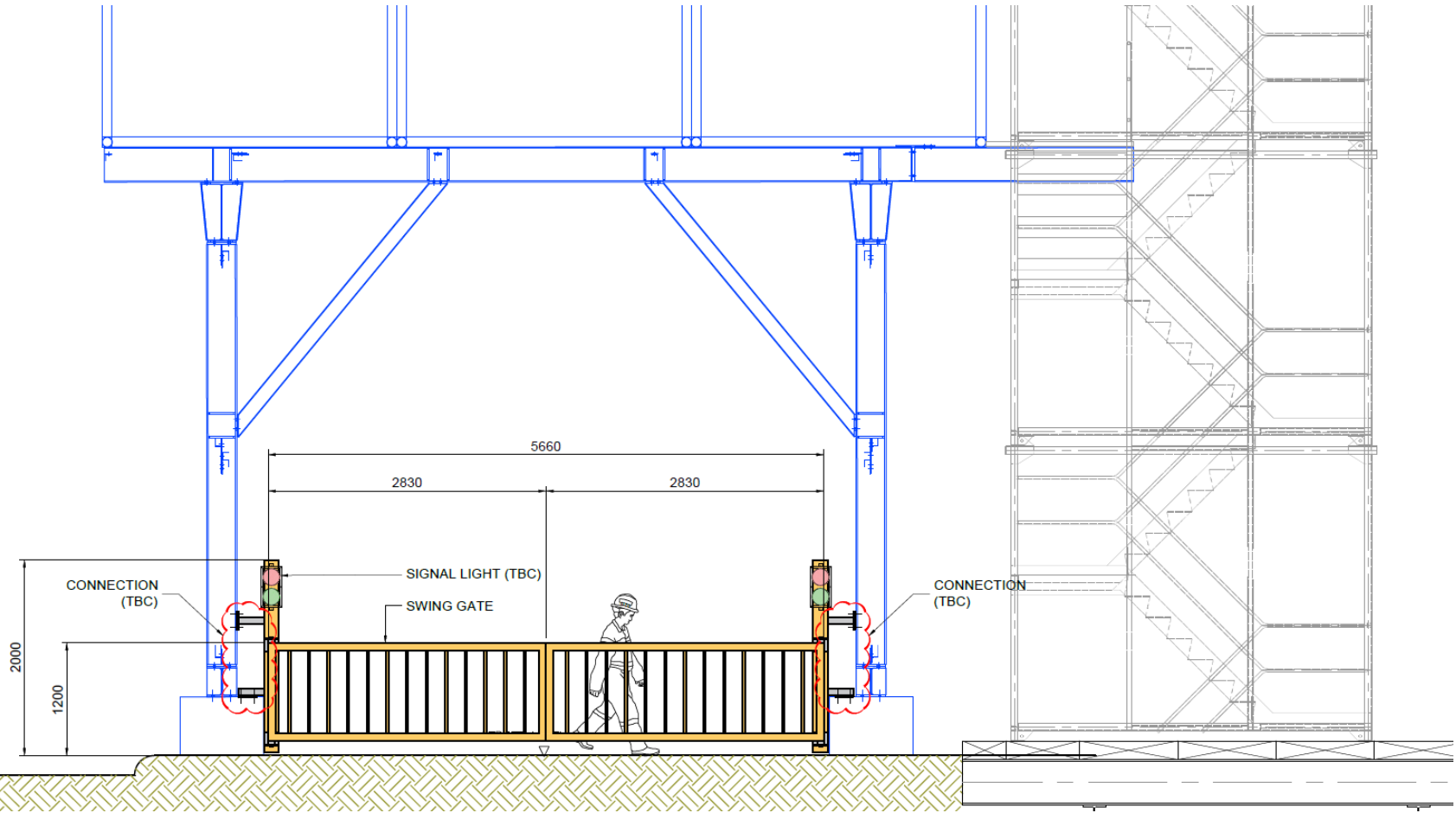
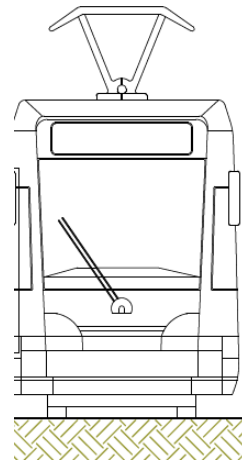


SWANSTON STREET DRIVEWAY

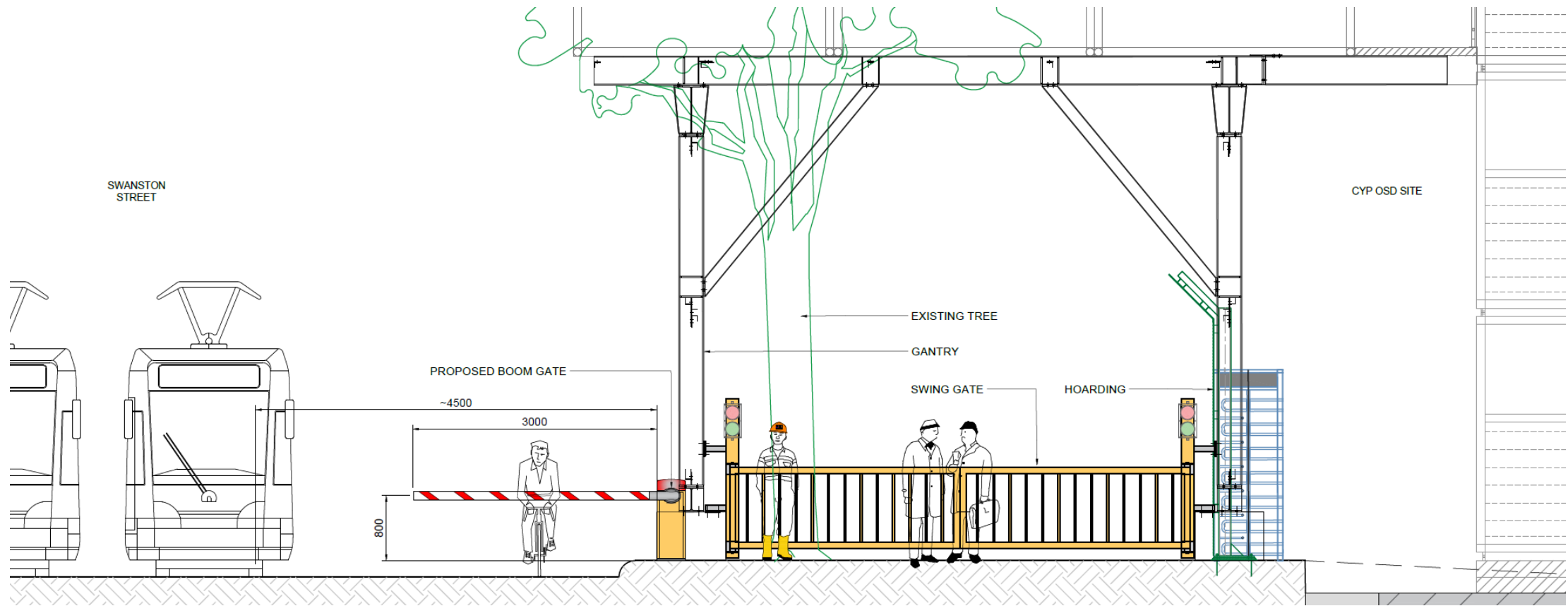


SWANSTON STREET PEDESTRIAN GATE

SWANSTON STREET



SWANSTON STREET CYCLIST GATE

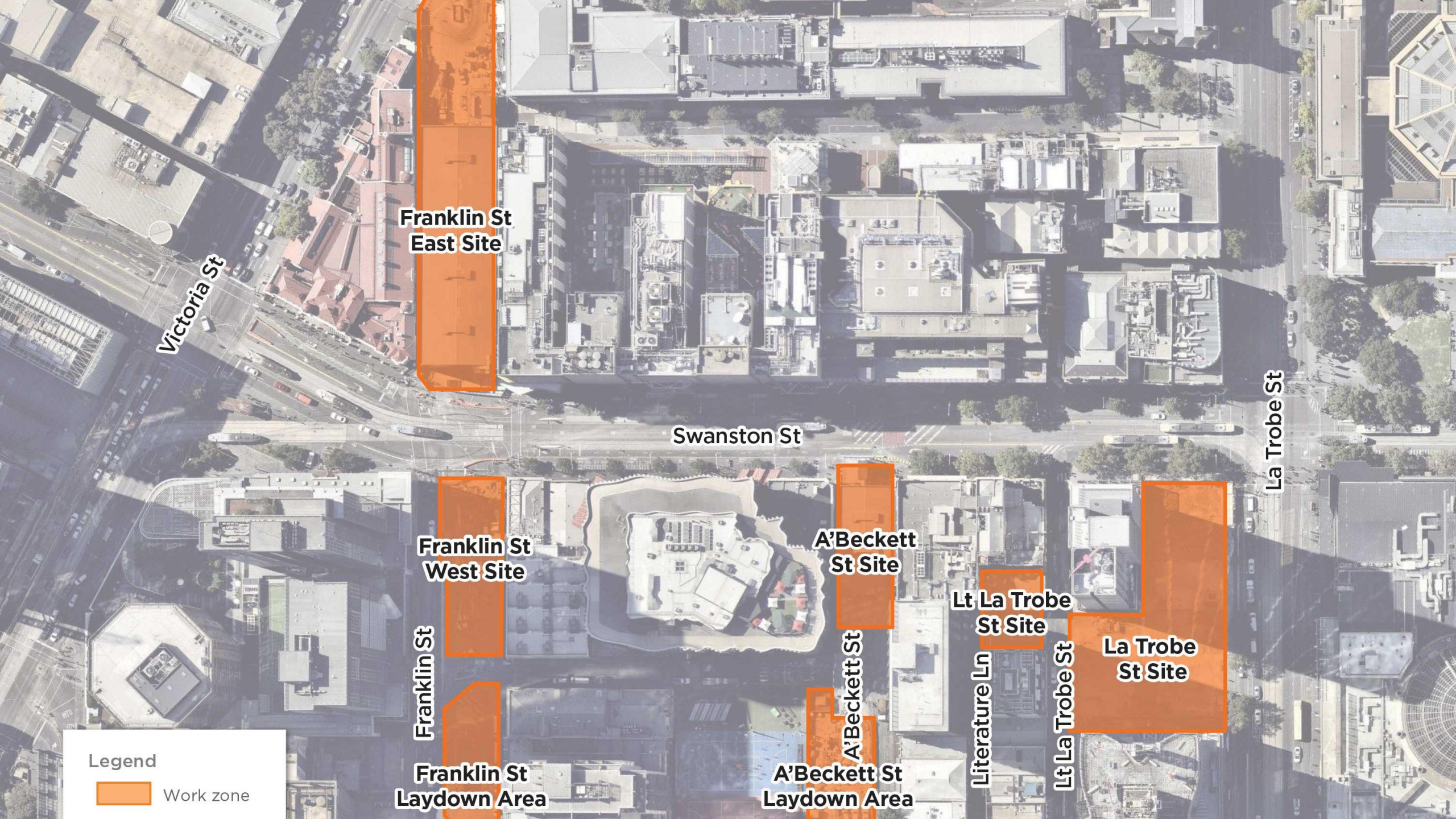


STATE LIBRARY STATION UPDATE





STATE LIBRARY STATION UPDATE



**Franklin St
East Site**

Swanston St

La Trobe St

**Franklin St
West Site**

**A'Beckett
St Site**

**Lt La Trobe
St Site**

**La Trobe
St Site**

Franklin St

A'Beckett St

Literature Ln

Lt La Trobe St

Legend

 **Work zone**

**Franklin St
Laydown Area**

**A'Beckett St
Laydown Area**

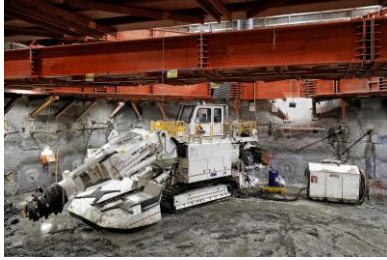


EXCAVATION UPDATE

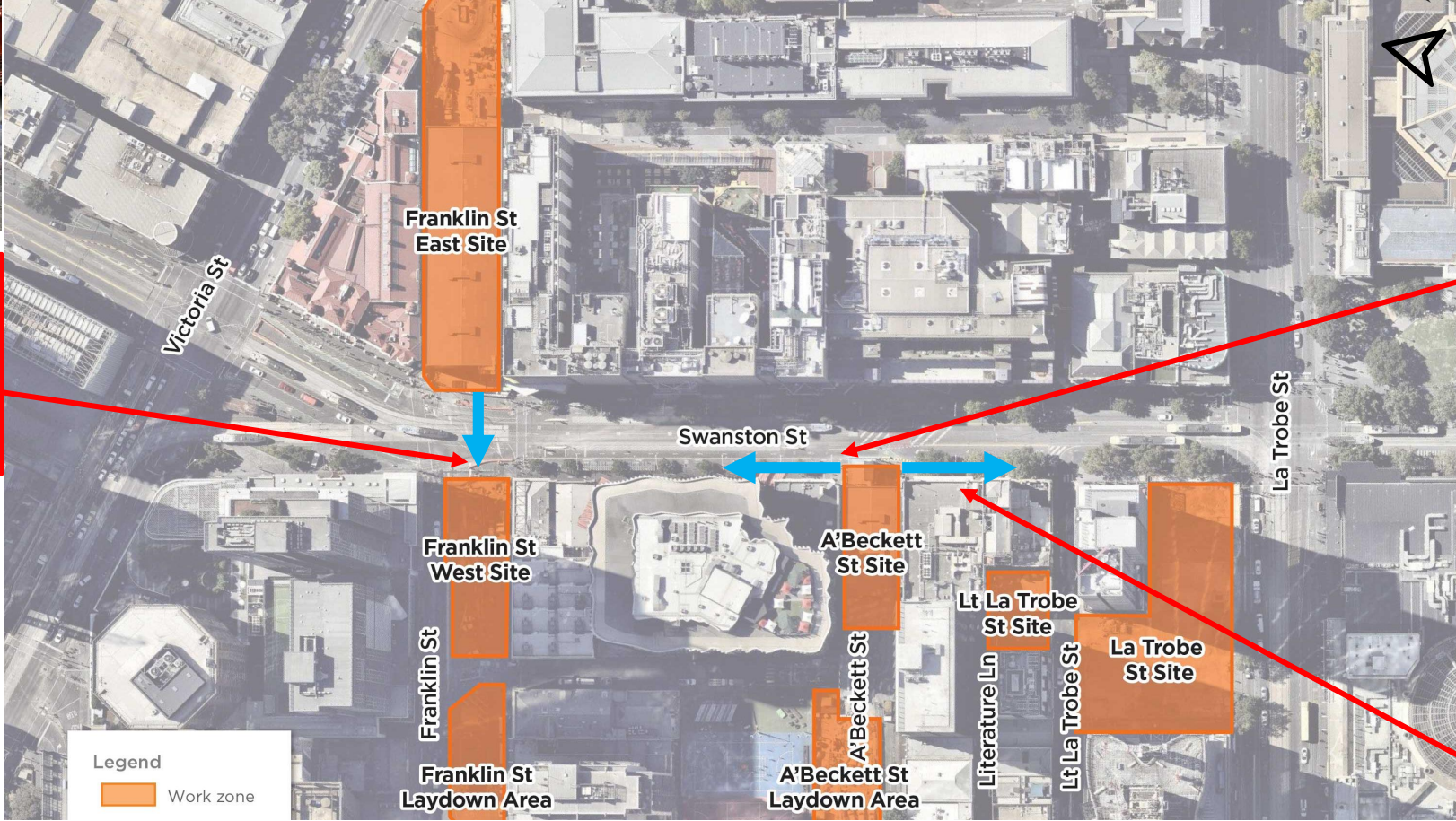
MEET CLARA



EXCAVATION UPDATE



Louise is heading west across Swanston Street and has completed over 31 metres



Jane is moving north and has already excavated over 25 metres

Road header #4 arriving June/July 2019

Clara is moving south and has excavated 24 metres



FRANKLIN STREET WEST UPDATE

FRANKLIN ST WEST – WORKS UPDATE

Activity	Location	May	Jun	Jul	Aug	Sept	Oct	Nov	Dec
Capping beam	Site	●—————●							
Deck construction	Site	●—————●							
Excavation	Site	—————●							●—————
Acoustic shed construction	Site					●—————●			

MANOR RED SHED








LITTLE LA TROBE STREET UPDATE

LITTLE LA TROBE STREET WORKS UPDATE

Activity	May	Jun	Jul	Aug	Sept	Oct	Nov	Dec
Archaeology	—				•			
Gas relocations	•	—		•				
Piling				•	—			

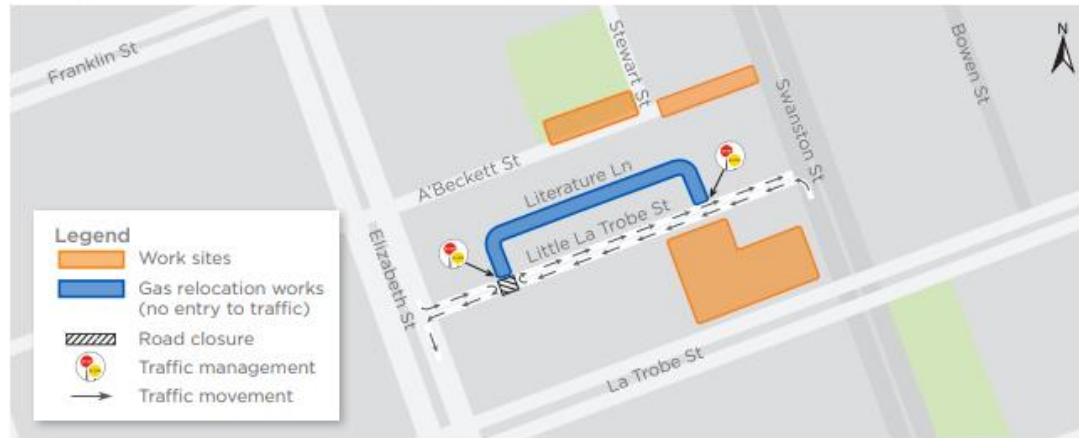


Stage 1 excavations: Have uncovered the remodelling and redevelopment of the site since the parcels were developed in the late 1850's

-  20th Century concrete
-  19th /20th Century brick
-  19th Century bluestone

LITERATURE LANE – GAS SERVICE RELOCATIONS

Sundays, 12 May - 2 June and Monday, 13 May 2019



Monday, 27 May and Sundays, 9 - 16 June 2019



Indicative only



LA TROBE STREET UPDATE

LA TROBE STREET SITE UPDATE

Activity	Location	May	Jun	Jul	Aug	Sept	Oct	Nov	Dec	
Excavation – temporary shaft	Site	■								
Adit excavation	Site			■						
Perimeter piling and plunge columns	Site	■								
Ground slab construction	Site						■			
La Trobe St service works	La Trobe St	■								

OUT OF HOURS WORKS

EXTENDED HOURS	
Stewart Street & A'Beckett Street	7am-6pm, Saturday 18 May (overhead gantry works)
La Trobe Street site	7am – 6pm, Monday to Fridays, 7am-6pm Saturday (piling works) and from 6pm-10pm Monday to Fridays (concrete pours as required) 10pm-5am Friday 13 May – mid-May (water connection to site)
La Trobe Street Service relocations	7am-6pm works, Mondays to Sundays 24/7 works will commence in mid-June
Literature Lane and Little La Trobe	7am-6pm, Monday to Fridays, 10am to 7pm Sundays, until mid-June (Gas relocation works)
Oversized plant and equipment deliveries	intermittently at all sites between 10pm – 7am, Monday to Fridays as per relevant approvals
Early works – Site demobilisation Bouverie & Victoria Streets	6pm-5am, Monday to Fridays until late May

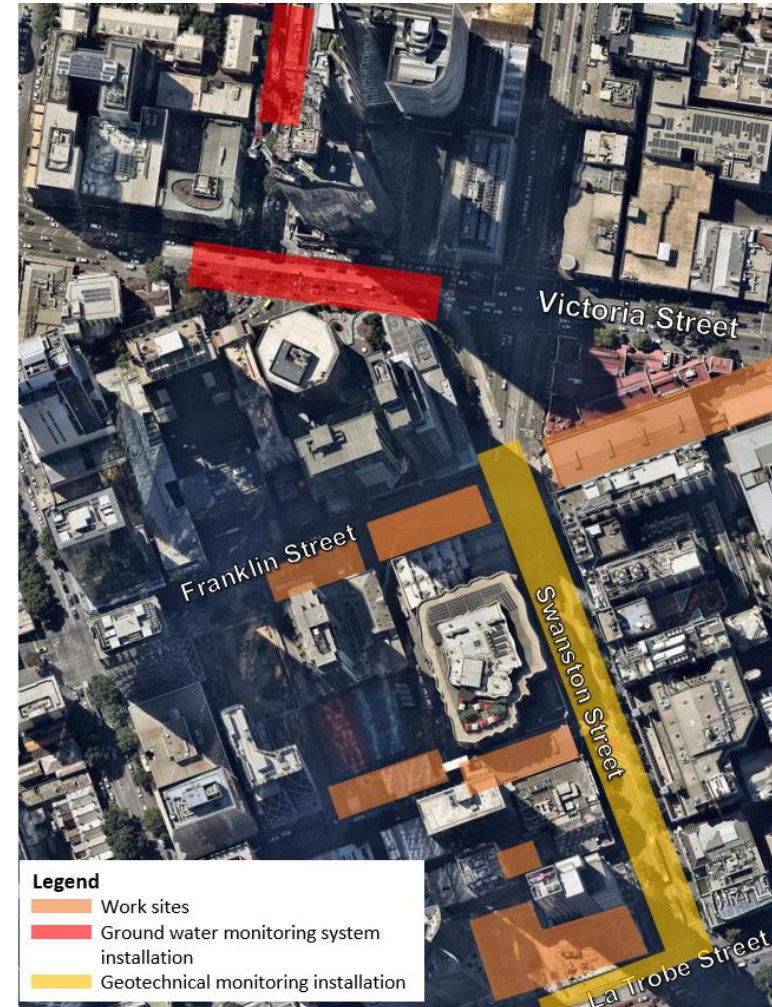
GEOTECHNICAL AND GROUNDWATER MANAGEMENT

Ground water monitoring

- Ongoing well testing – intermittent, Franklin, Victoria and Therry Streets
- Site demobilisation and road reinstatement, 6pm-5am, Monday to Thursdays, Victoria and Bouverie Street

Geotechnical monitoring installation

- Ongoing- Swanston and La Trobe Streets, 1am to 5am, Sunday to Fridays

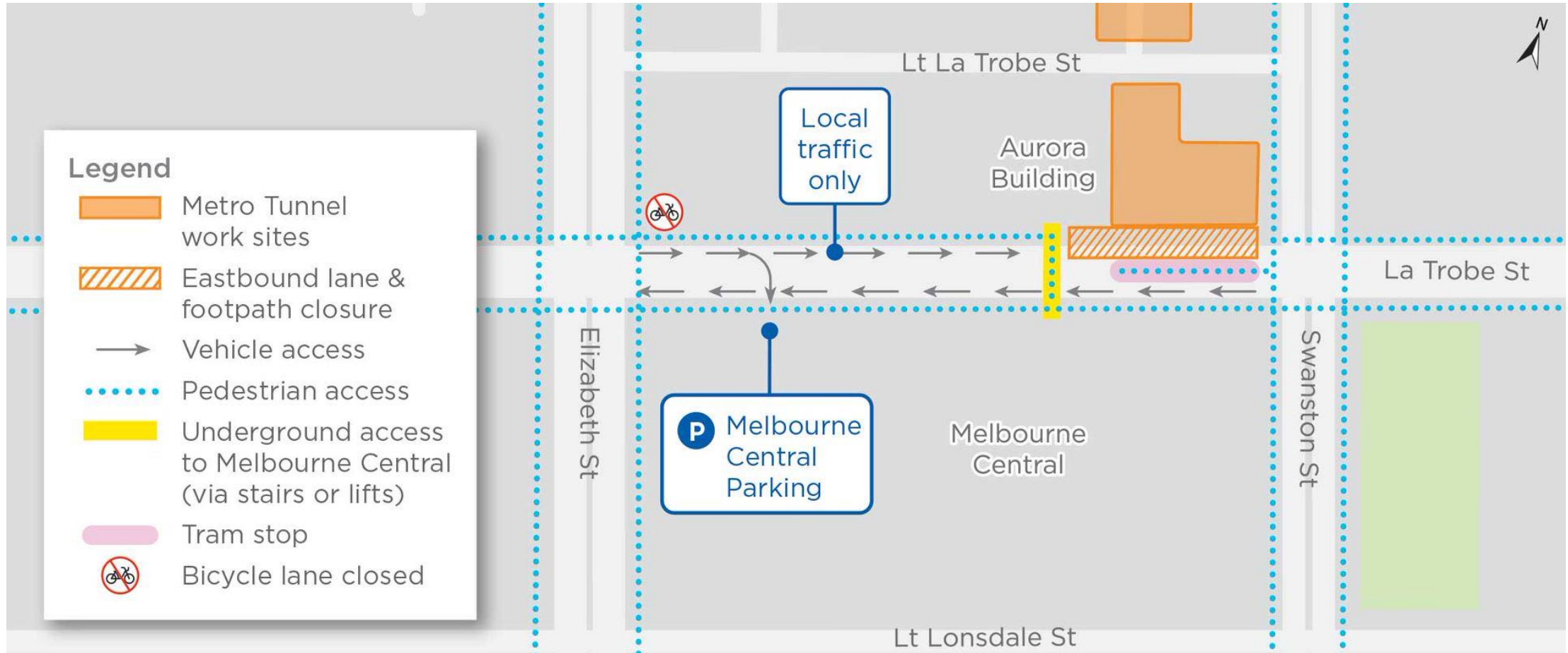


LA TROBE STREET SERVICE RELOCATIONS



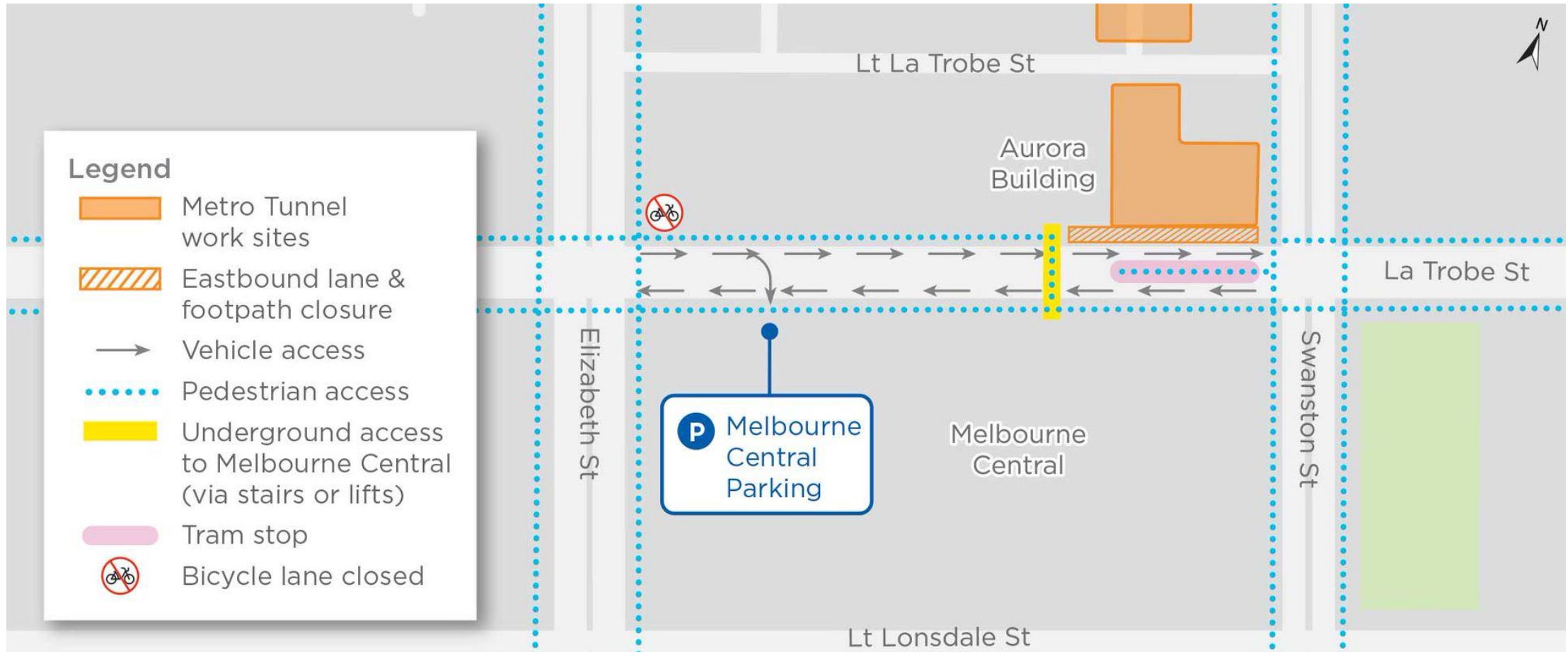
LA TROBE STREET SERVICE RELOCATIONS

STAGE ONE: 20 MAY – 14 JUNE



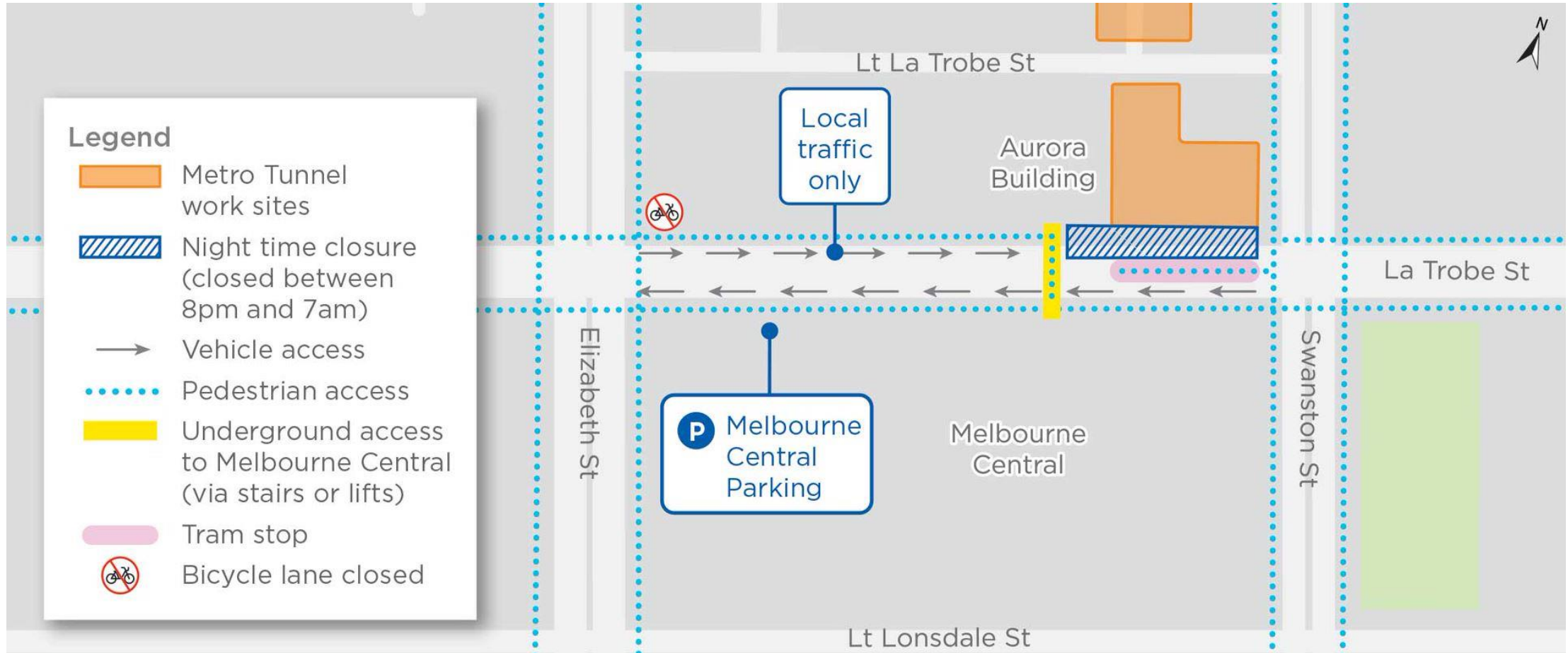
LA TROBE STREET SERVICE RELOCATIONS

STAGE TWO: 15 JUNE- 24 JUNE



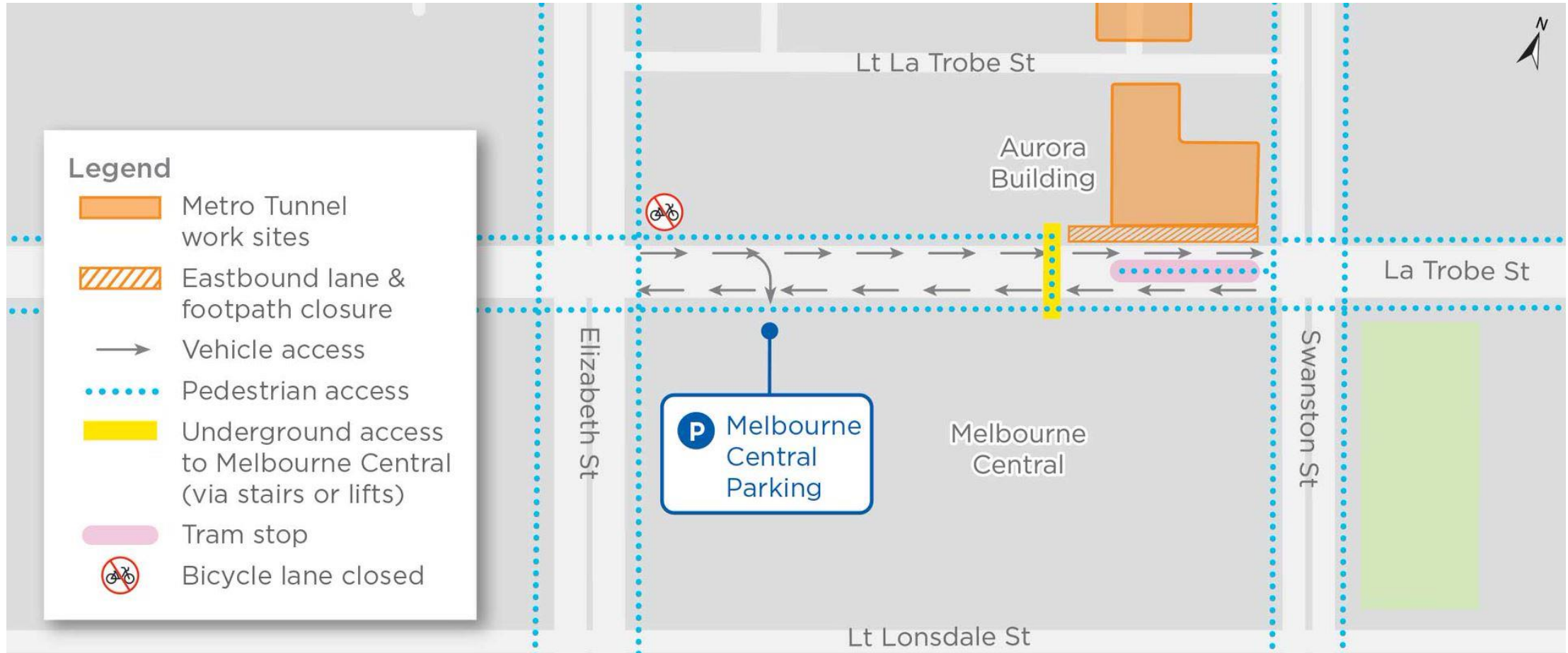
LA TROBE STREET SERVICE RELOCATIONS

STAGE THREE: 25 JUNE – 1 JULY

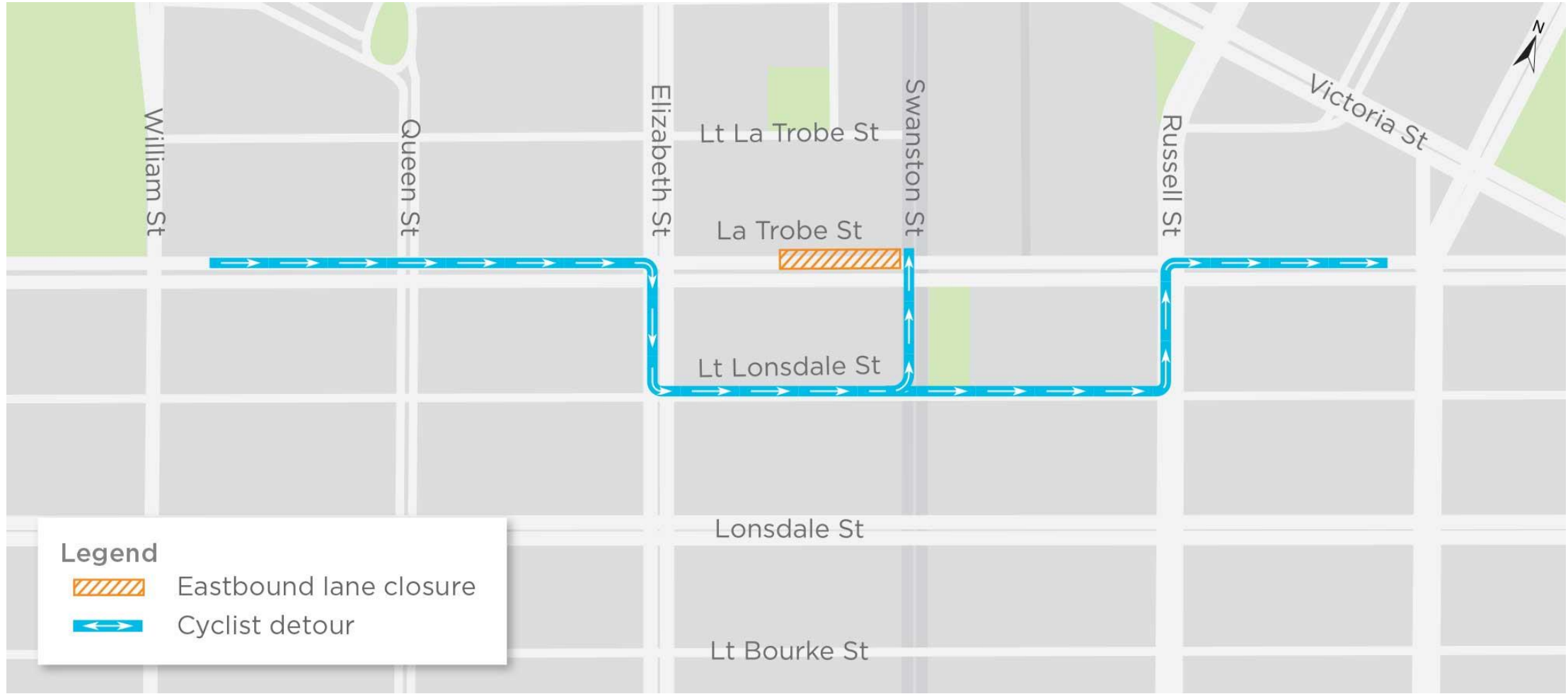


LA TROBE STREET SERVICE RELOCATIONS

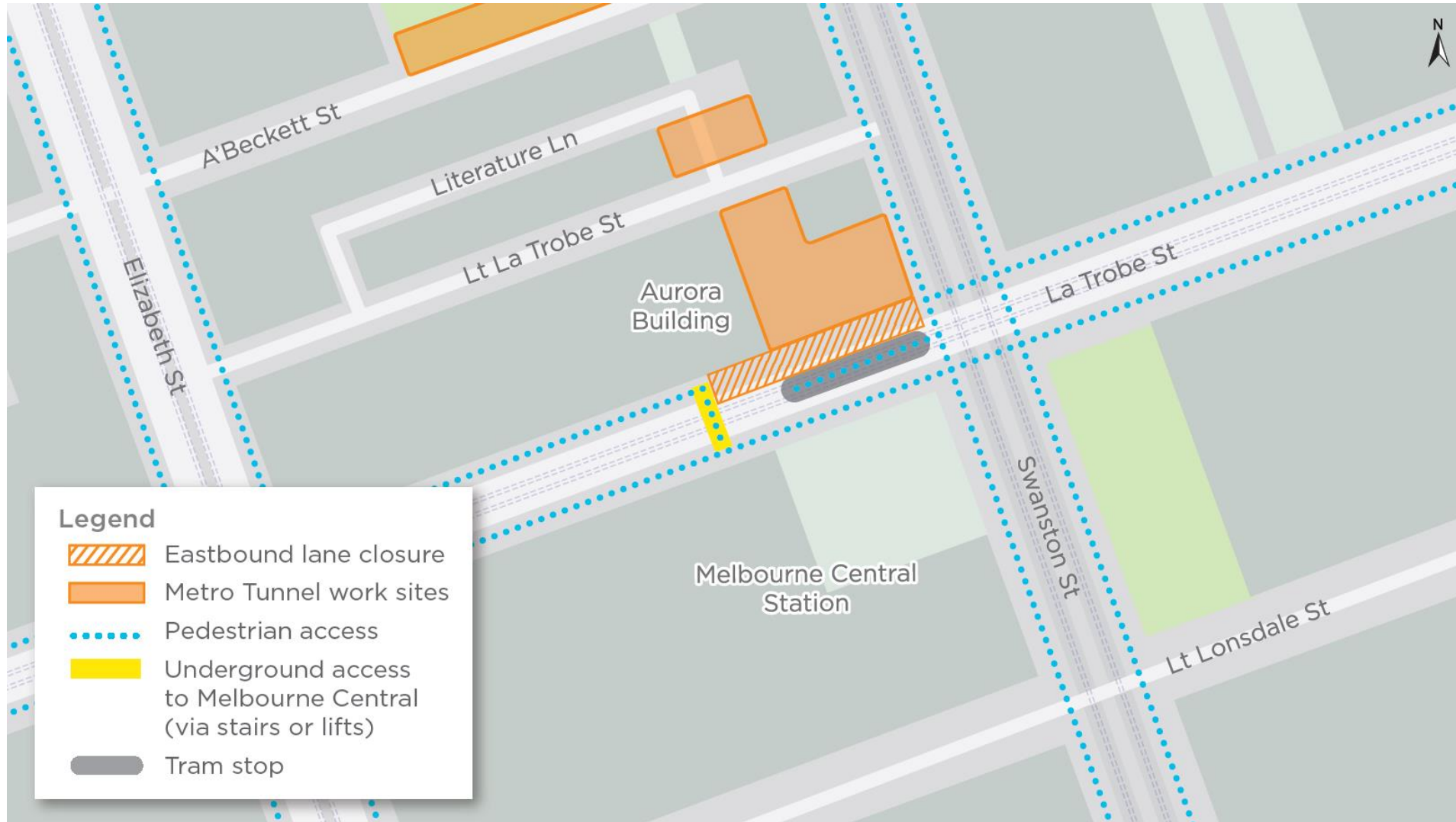
STAGE FOUR: TUESDAY 2- MONDAY 15 JULY



CYCLIST DETOUR



PEDESTRIAN DETOUR



METRO TUNNEL CREATIVE PROGRAM



36 Hours in Melbourne

How to spend a weekend in this coffee-sipping, culture-loving, boundary-pushing city in southern Australia.



Bicyclists ride past a tram on Swanston Street, a thoroughfare in the city center. Asanka Brendon Ratnayake for The New York Times

By Justin Bergman

May 2, 2019



Pity Melbourne: After seven years of topping the Economist Intelligence Unit's most livable city rankings, it was finally displaced last year by another coffee-loving city, Vienna. Despite being nudged





CITY SQUARE UPCOMING



CITY SQUARE UPCOMING



URBAN SQUARE





FRANKLIN EAST HOARDING



CBD CREATIVE PROGRAM OVERVIEW

Scott Alley

- CYP are exploring options to improve the visual amenity of Scott Alley

Federation Square

- Working with Fed Square on hoarding options that will support events happening in the square as well wayfinding and business support

Flinders Quarters

- Waiting until we know what the final structure looks like – will be looking to improve light and add colour on Swanston St

PHOTO 2020

- City Square, Urban Square and Franklin St East will display works specially commissioned as part of PHOTO 2020

Urban Square

- Storymap for Melbourne Knowledge Week then work from a student from RMIT School of Art

Franklin St West

- CYP will be working with residents and local businesses to select creative hoarding treatments

GEHL PUBLIC LIFE, PUBLIC SPACE SURVEY



Over **60 volunteers** surveyed **six** precincts (didn't get any takers for South Yarra)

Approximately **350 hours** of observational and intercept surveys

Over **570** intercept surveys collected

Volunteers were made up from approximately 40% RMIT students, 20% Melb Uni students, 20% City of Melbourne volunteers and 20% local or state gov staff members.

We measure
people
moving



We measure
people
staying



We measure
sentiments and
other things
beyond what
the eye can see



GEHL OBSERVATIONS & INTERCEPTS – NEXT STEPS



- May: Categorisation
- June: Data entry
- July: High level analysis
- August: Presentations to key stakeholders

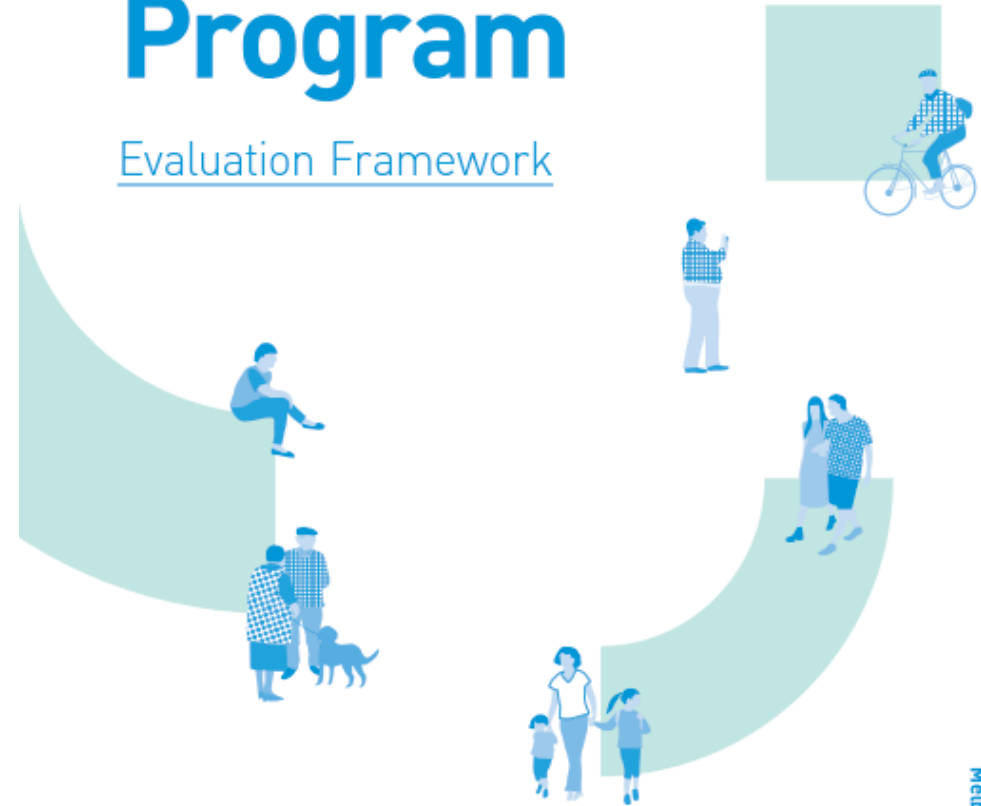
GEHL EVALUATION FRAMEWORK

Identifies:

- Research questions
- Indicators
- Methods
- Timeline
- Tools

Metro Tunnel Creative Program

Evaluation Framework



QUESTIONS?

