



## CBD COMMUNITY REFERENCE GROUP – MEETING 21

CROSS YARRA PARTNERSHIP  
21 JUNE 2019





## JUNE CBD COMMUNITY REFERENCE GROUP

---

**Blythe Chidgey**, Town Hall Station Stakeholder Engagement Manager,  
Cross Yarra Partnership

**Melinda Kelly**, State Library Stakeholder Engagement Manager, Cross  
Yarra Partnership

**Michael Lavender**, Town Hall Station Traffic Manager, Cross Yarra  
Partnership

**Ben Day**, Shafts Manager, State Library, Cross Yarra Partnership



Construction partner:

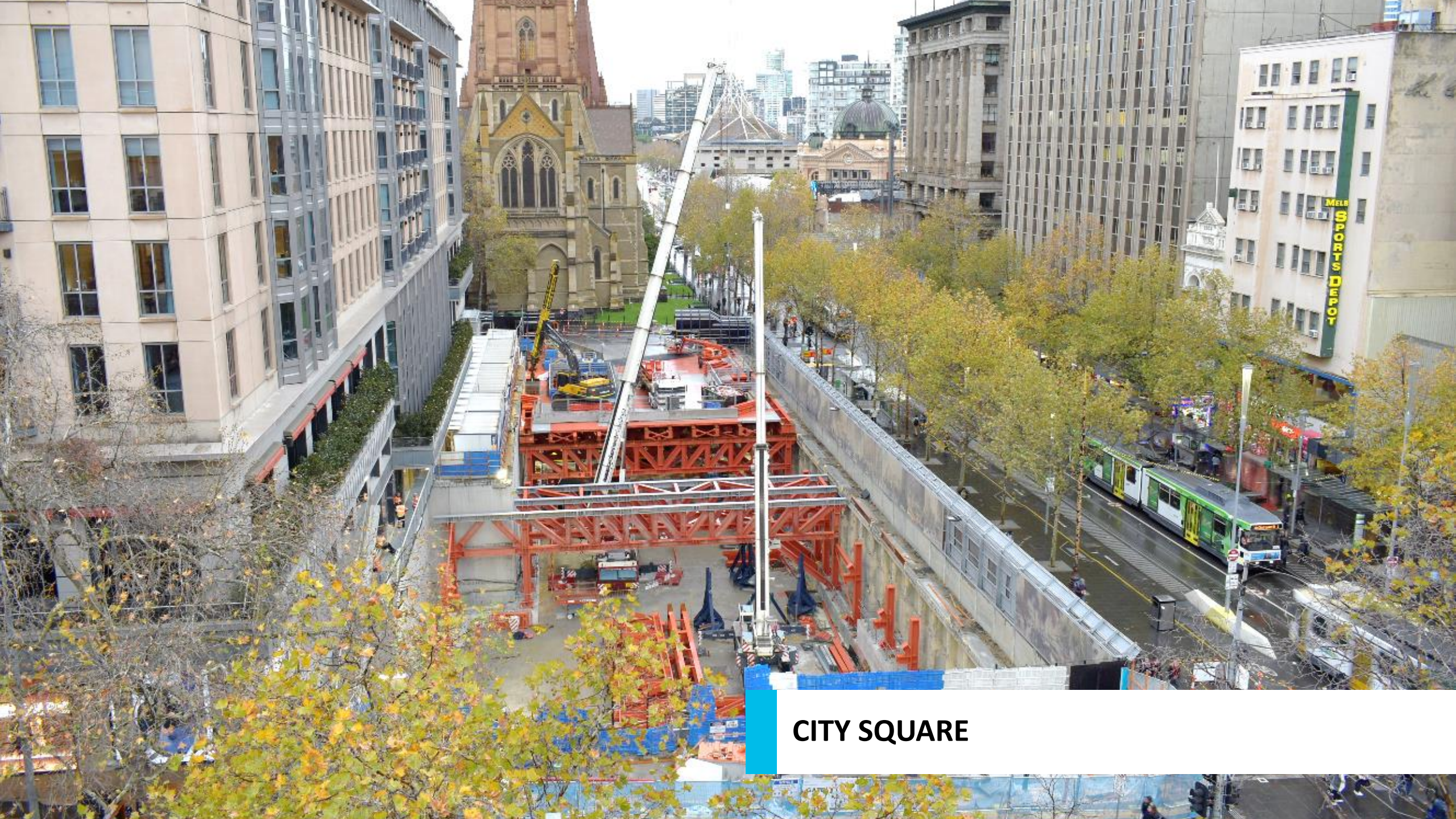


# AGENDA

1. Town Hall Station update
2. Swanston Street Driveway works update
3. State Library Station update
4. Literature Lane and Franklin Street update

# TOWN HALL STATION UPDATE





## CITY SQUARE

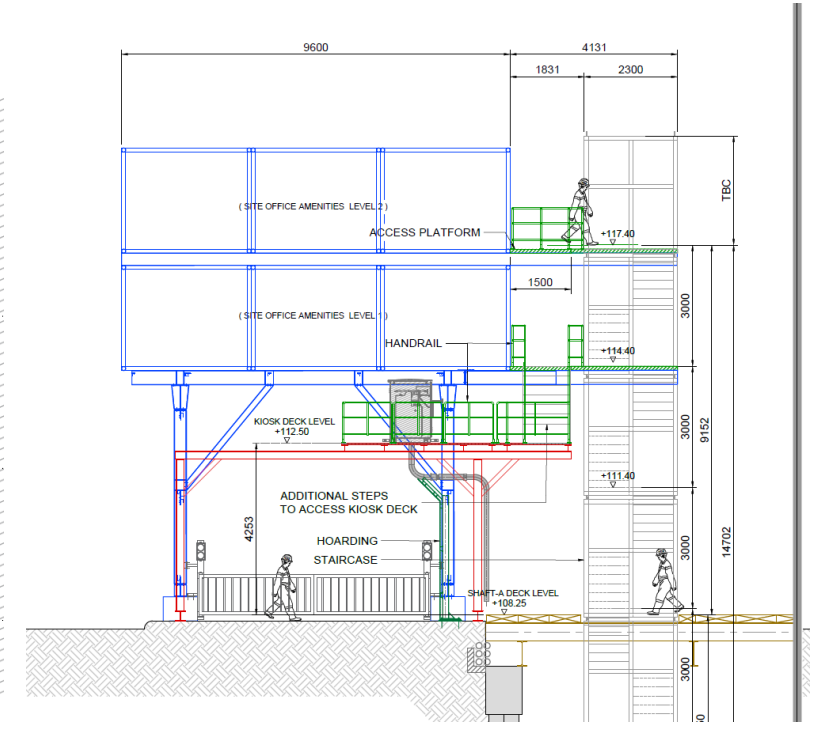
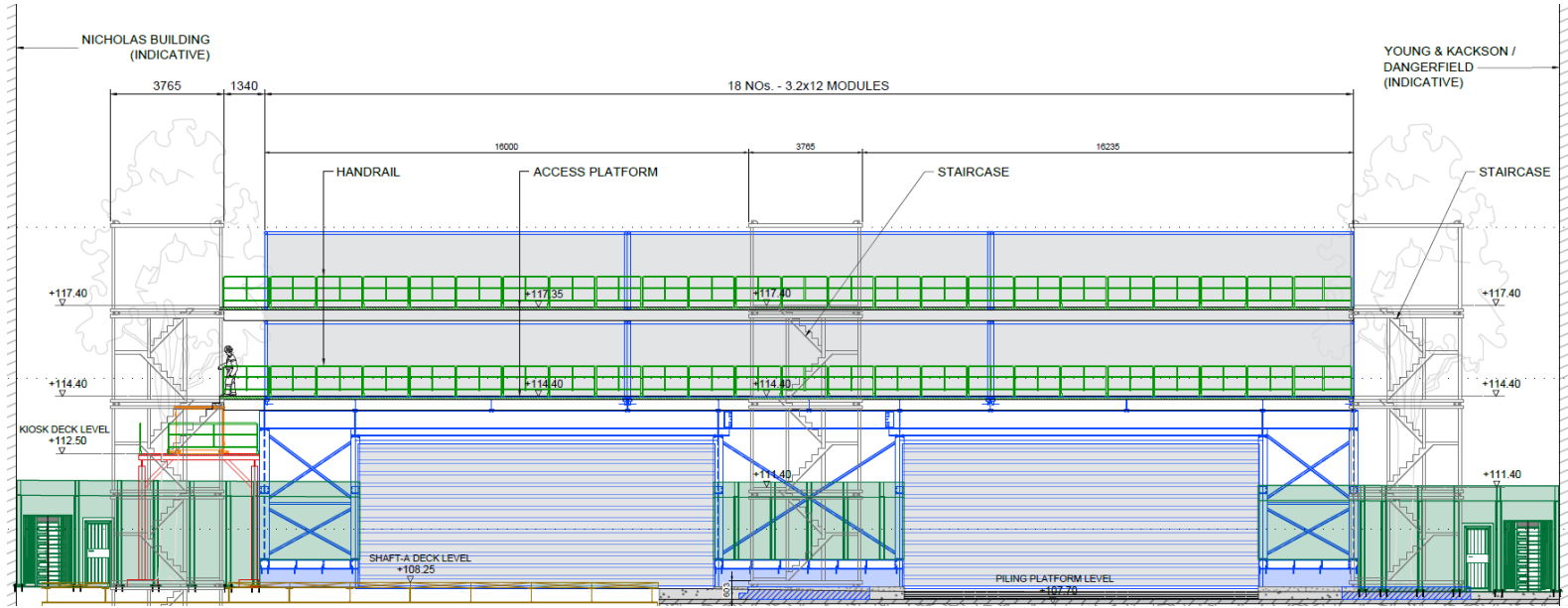


**FLINDERS QUARTER**

# FLINDERS QUARTER – WORKS UPDATE

Activity	Location	Jun	Jul	Aug	Sept	Oct	Nov	Dec
Gantry installation	External		●—●					
Excavation – Shaft A	Internal	●	—————	—————	—————	—————	●	
Piling – Shaft B	Internal	—————	—————	—————	—————	—————	●	
Excavation – Shaft B	Internal						●	—————

# SWANSTON STREET GANTRY



SWANSTON STREET

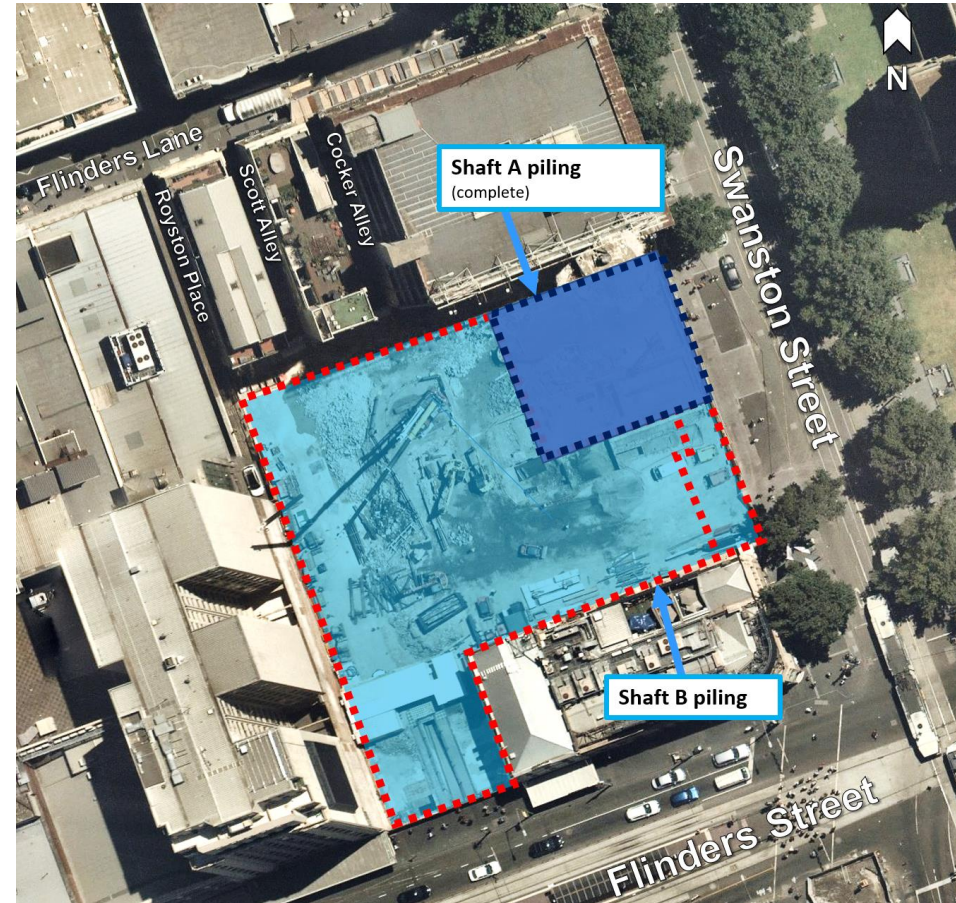


## Progress

- The 56 Shaft A piles are now complete

## June

- Shaft B piling – 180 piles to complete by November 2019



# FLINDERS QUARTER – OUT OF HOURS WORKS

## **Preparatory works (ongoing)**

*Material delivery/removal and concrete pours*

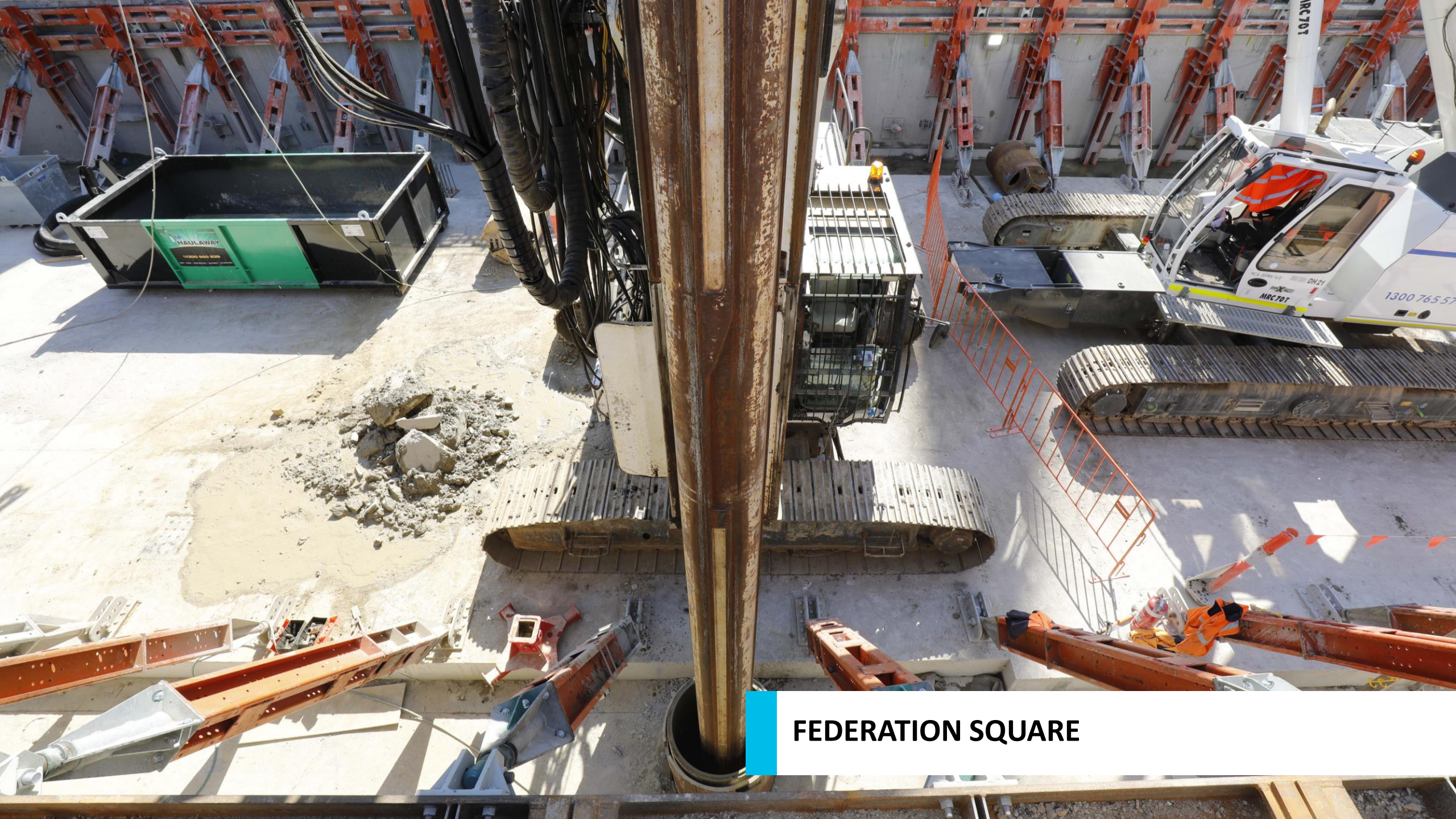
- Monday to Fridays, 6pm – 10pm
- Saturdays, 1pm – 4pm

## **Pile cage deliveries**

- Monday to Saturdays, 5am - 6:30am

## **Shaft B piling**

- Monday to Fridays, 6pm-10pm
- Saturdays, 1pm-5pm



**FEDERATION SQUARE**

# FEDERATION SQUARE – WORKS UPDATE

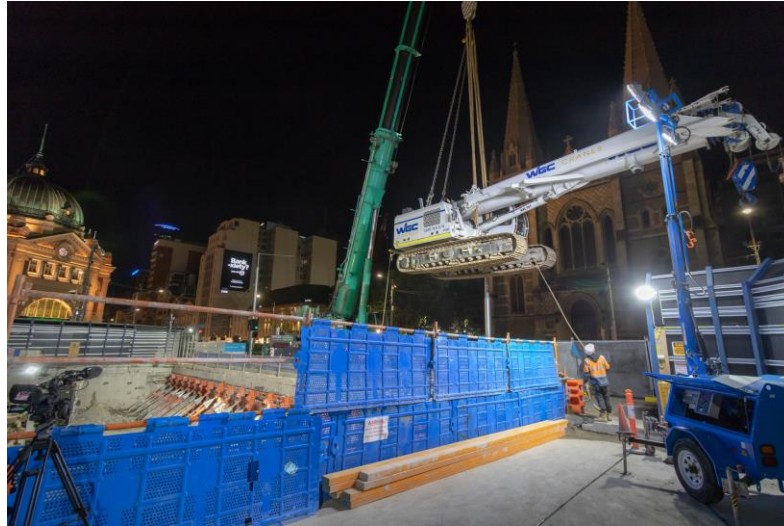
Activity	Location	Jun	Jul	Aug	Sept	Oct	Nov	Dec
Piling	Internal	—						
Deck construction	Internal			—				
Acoustic shed construction	Internal					—		
Excavation & Strutting	Internal		—				—	

↑  
*First 8 metres*

# FEDERATION SQUARE - PROGRESS



MARCH- DEMOLITION COMPLETION



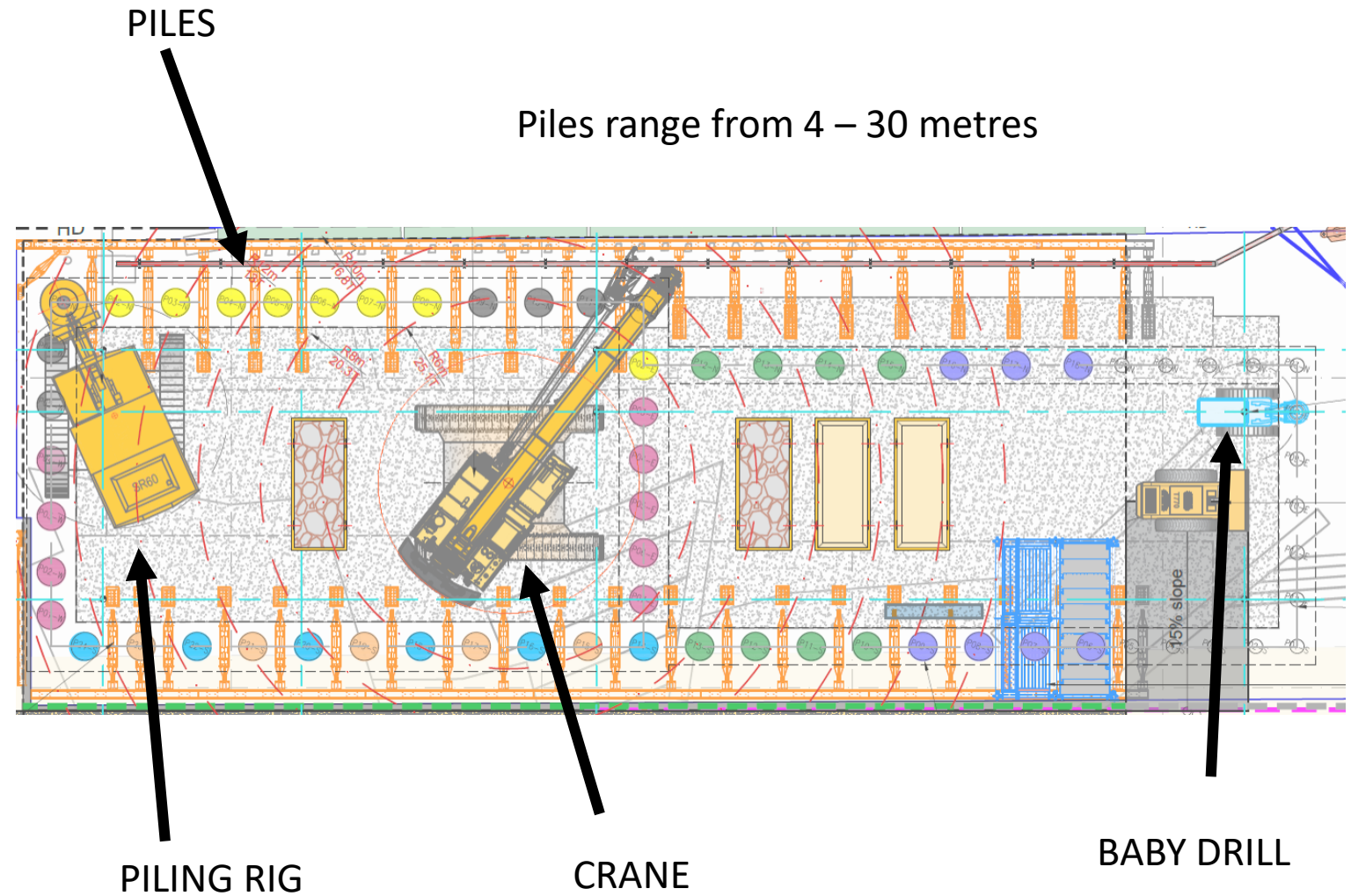
APRIL -PILING RIG DELIVERY



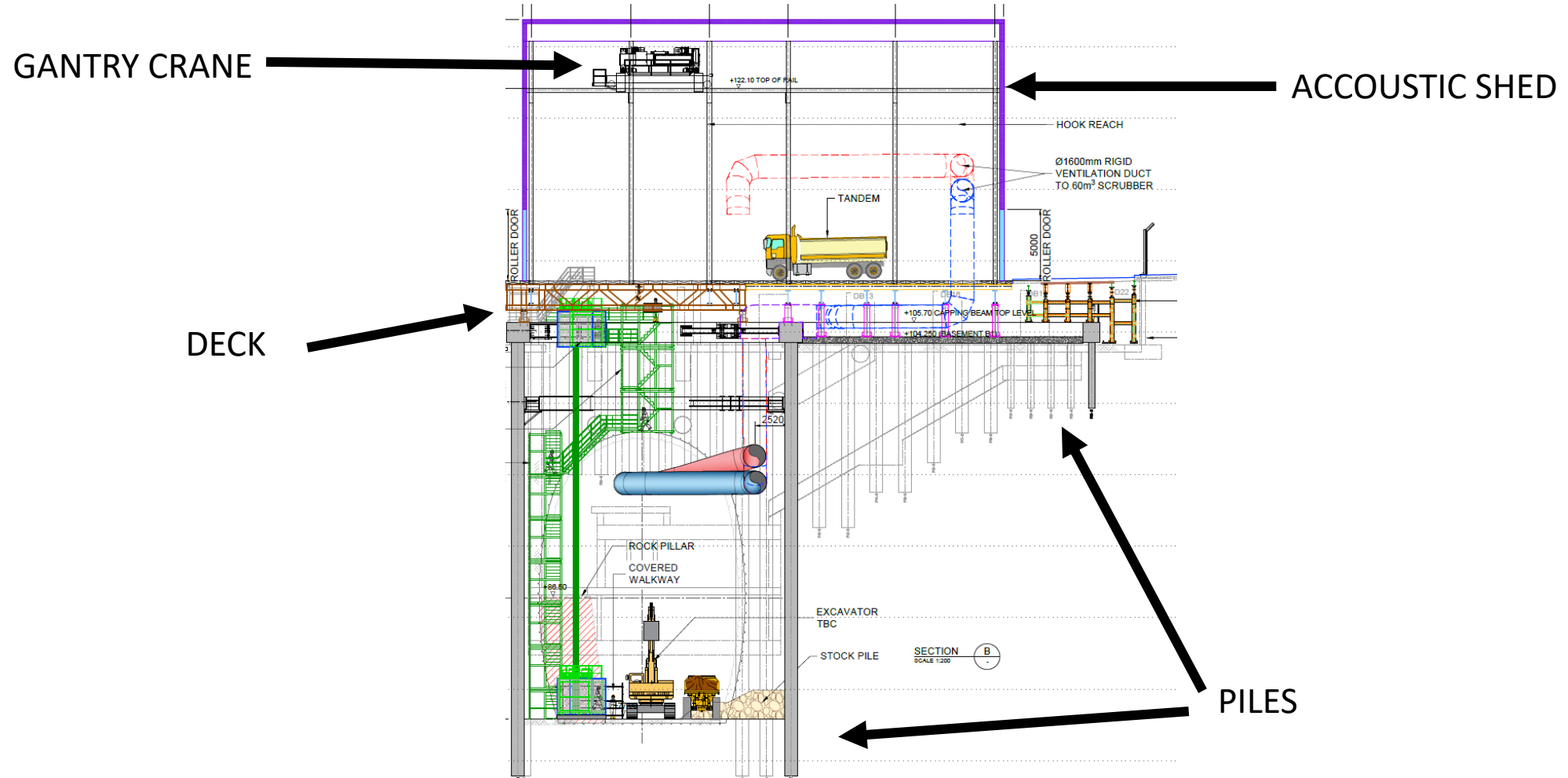
APRIL- JULY PILING

# FEDERATION SQUARE – PILING UPDATE

**June 2019**  
Piling 40% complete  
Ongoing piling works until July 2019

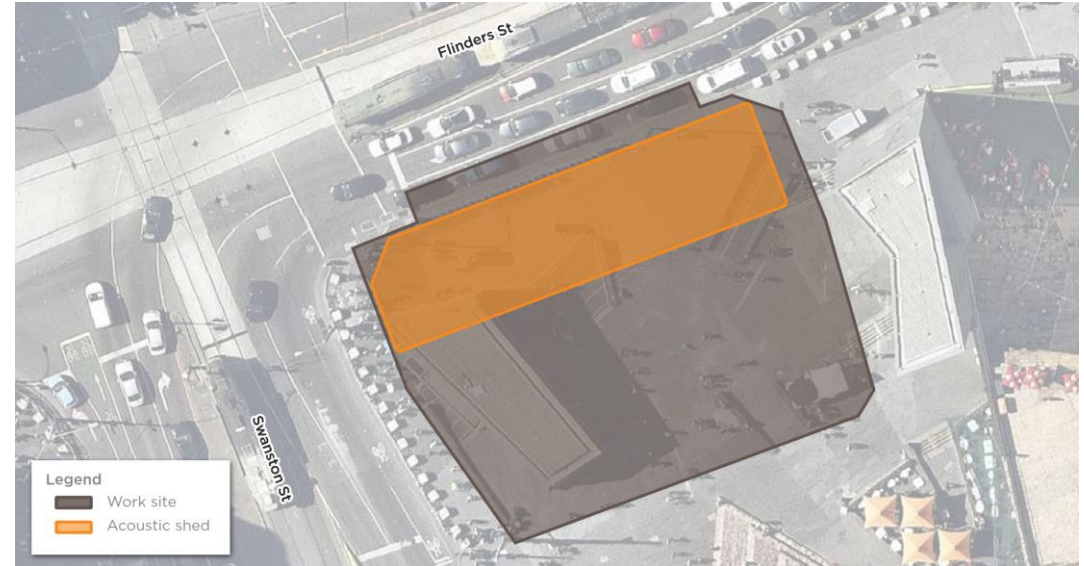
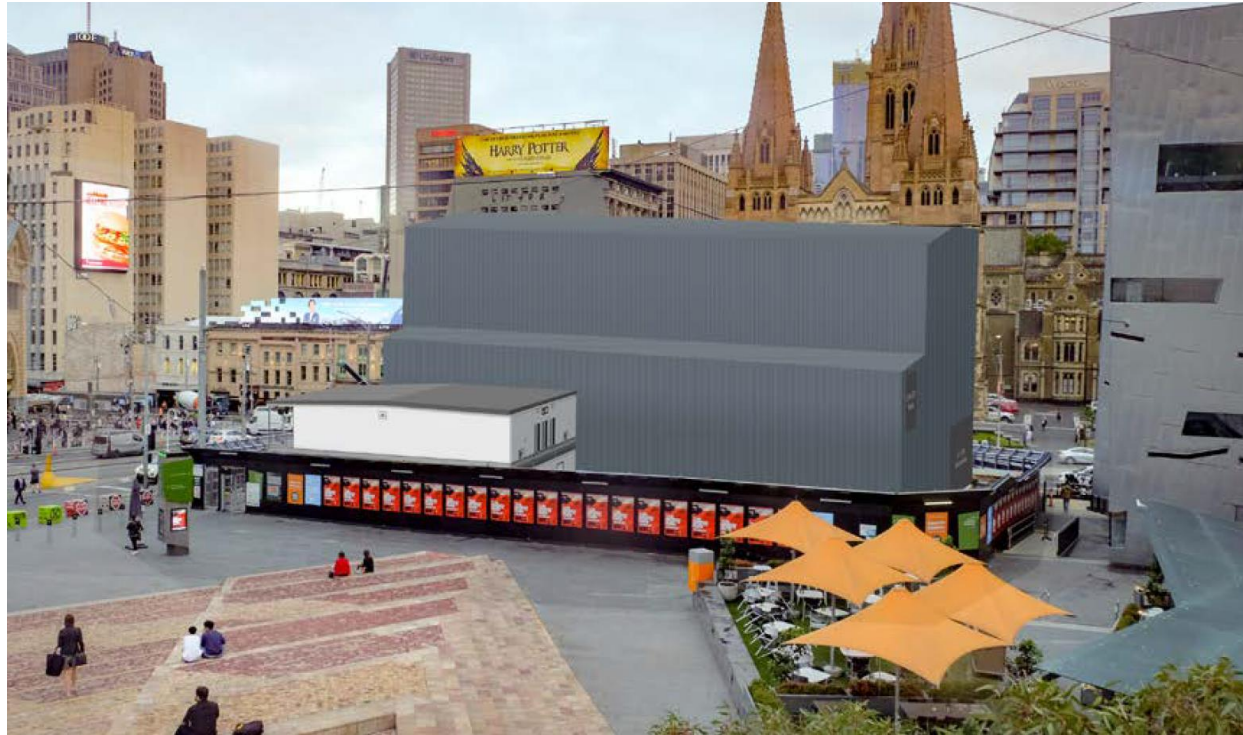


# FEDERATION SQUARE



# FEDERATION SQUARE – ACOUSTIC SHED

OCTOBER- DECEMBER 2019





# FEDERATION SQUARE – OUT OF HOURS WORK

## **Piling works**

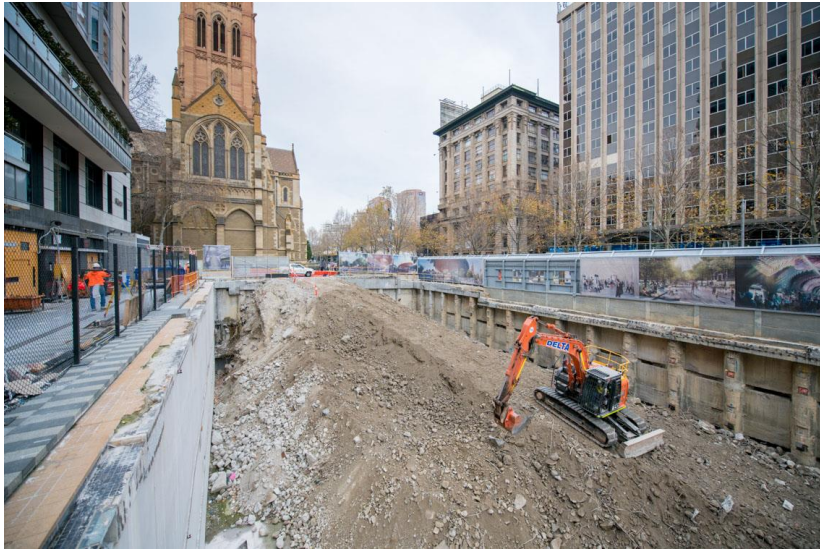
*Piling works will end at 10pm and concrete pours will continue until 12am*

- Monday to Fridays, 6am- 12am,
- Saturdays, 6am-6pm

# CITY SQUARE – WORKS UPDATE

Activity	Location	Jun	Jul	Aug	Sept	Oct	Nov	Dec
Deck construction	Internal	—————●						
Slab removal	Internal		●———●	●———●				
Acoustic shed construction	Internal	●—————●						
Excavation	Internal			●—————				
Collins Street driveway	External	●———●						
Swanston Street driveway	External		●———●					

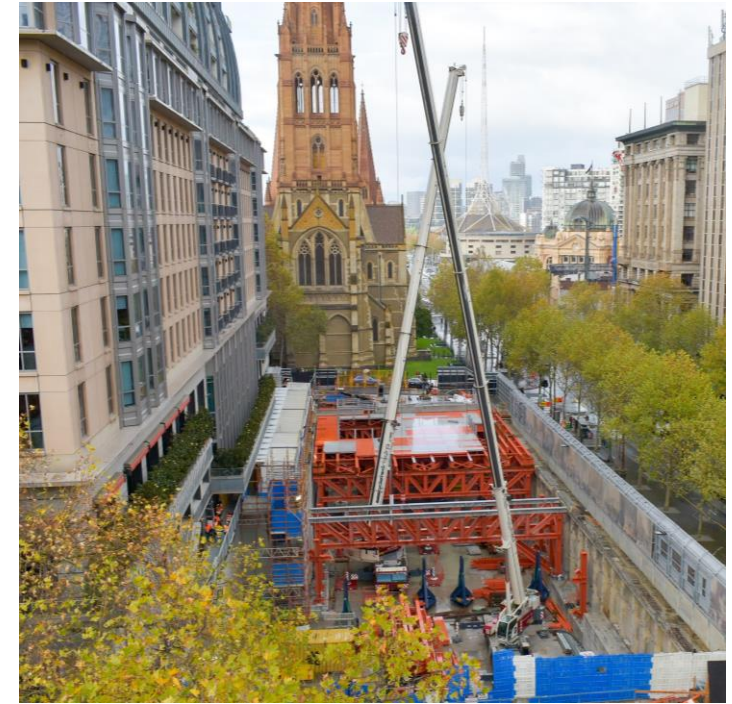
# CITY SQUARE - PROGRESS



JUNE 2018



NOVEMBER 2018



JUNE 2019

# CITY SQUARE – OUT OF HOURS WORKS

## **Vehicle movements**

*Deliveries, waste and spoil removal ongoing until July 2019*

- Monday to Fridays, 6pm-10pm

## **Deck construction works**

- Monday to Fridays, 7am-10pm
- Saturday, 7am-5pm

## Groundwater well installation works

*Continuing throughout June*

- Works will occur between 10pm and 5am, to minimise disruption to traffic

## Permanent connection works

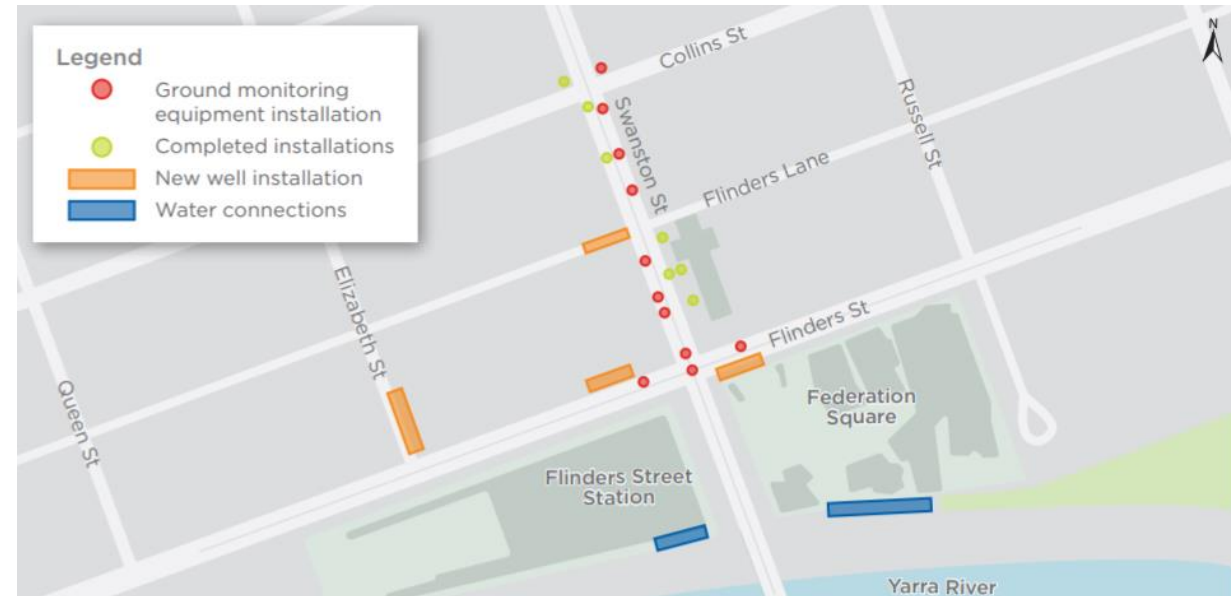
Connection involves scanning the area, saw-cutting, digging, and excavation works

- 7am – 6pm, Monday to Fridays

## Ground monitoring equipment installation

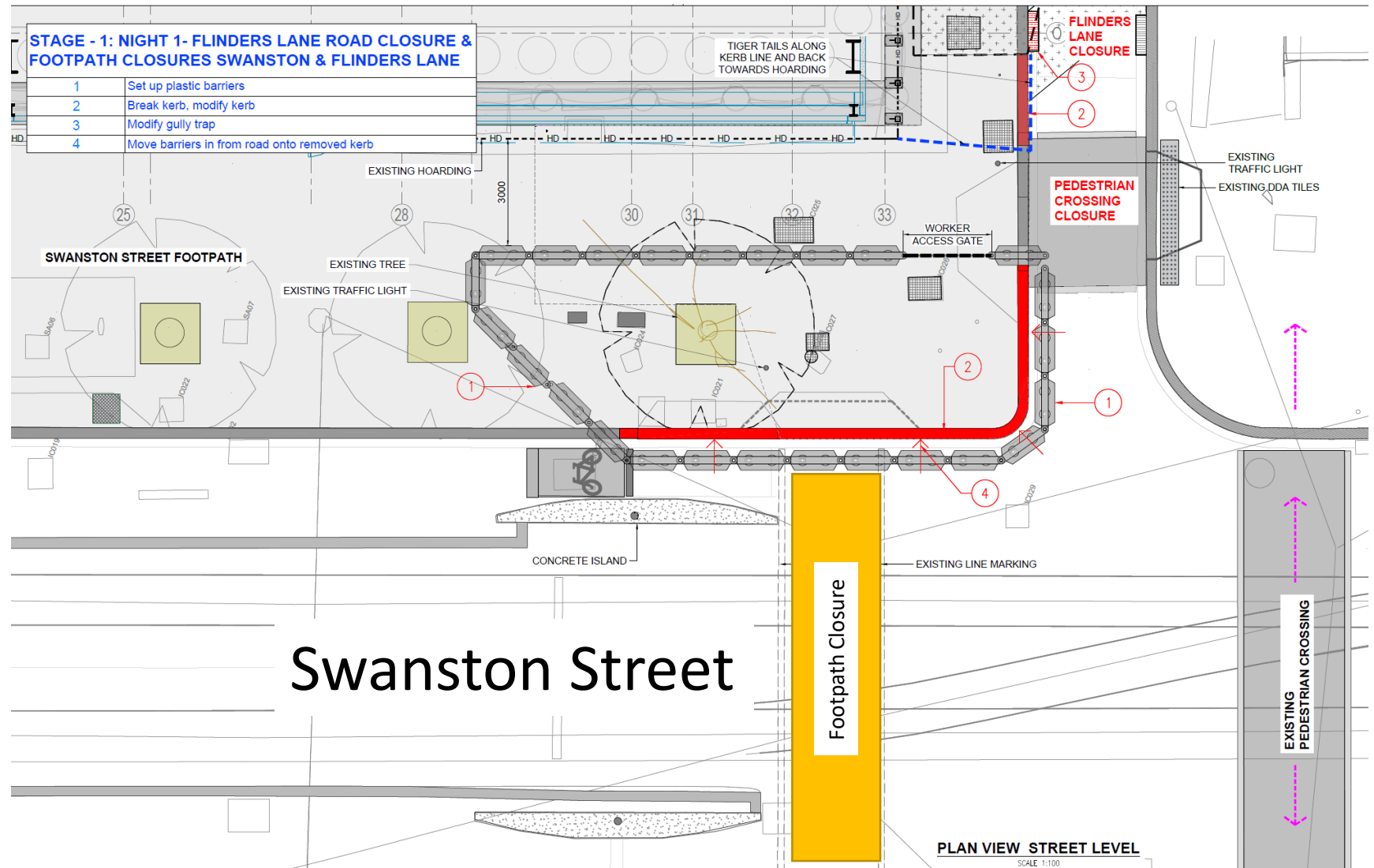
Instruments will measure ground movement during tunnelling and excavation activities

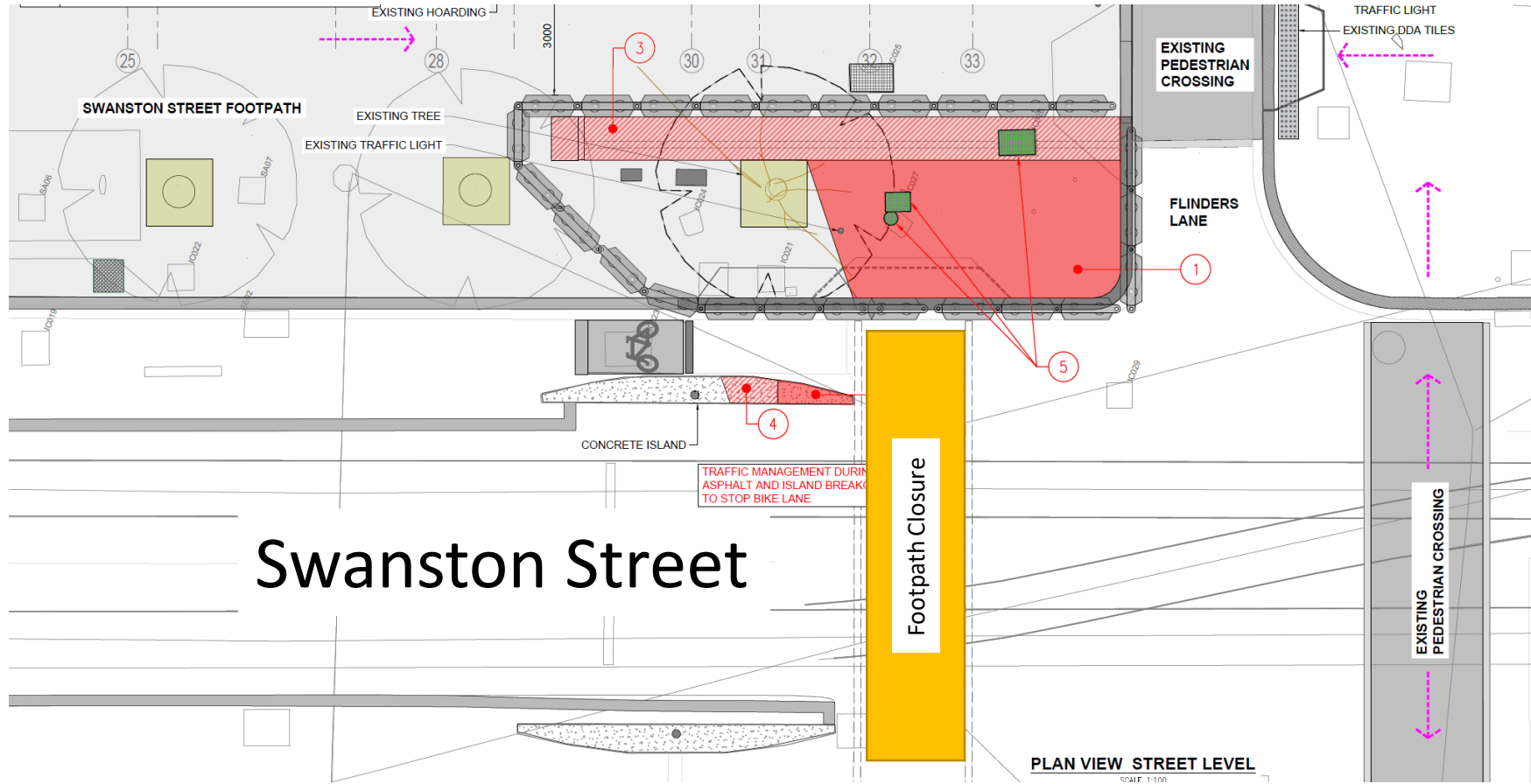
- 9pm – 5am, ongoing throughout June 2019



# SWANSTON STREET DRIVEWAY

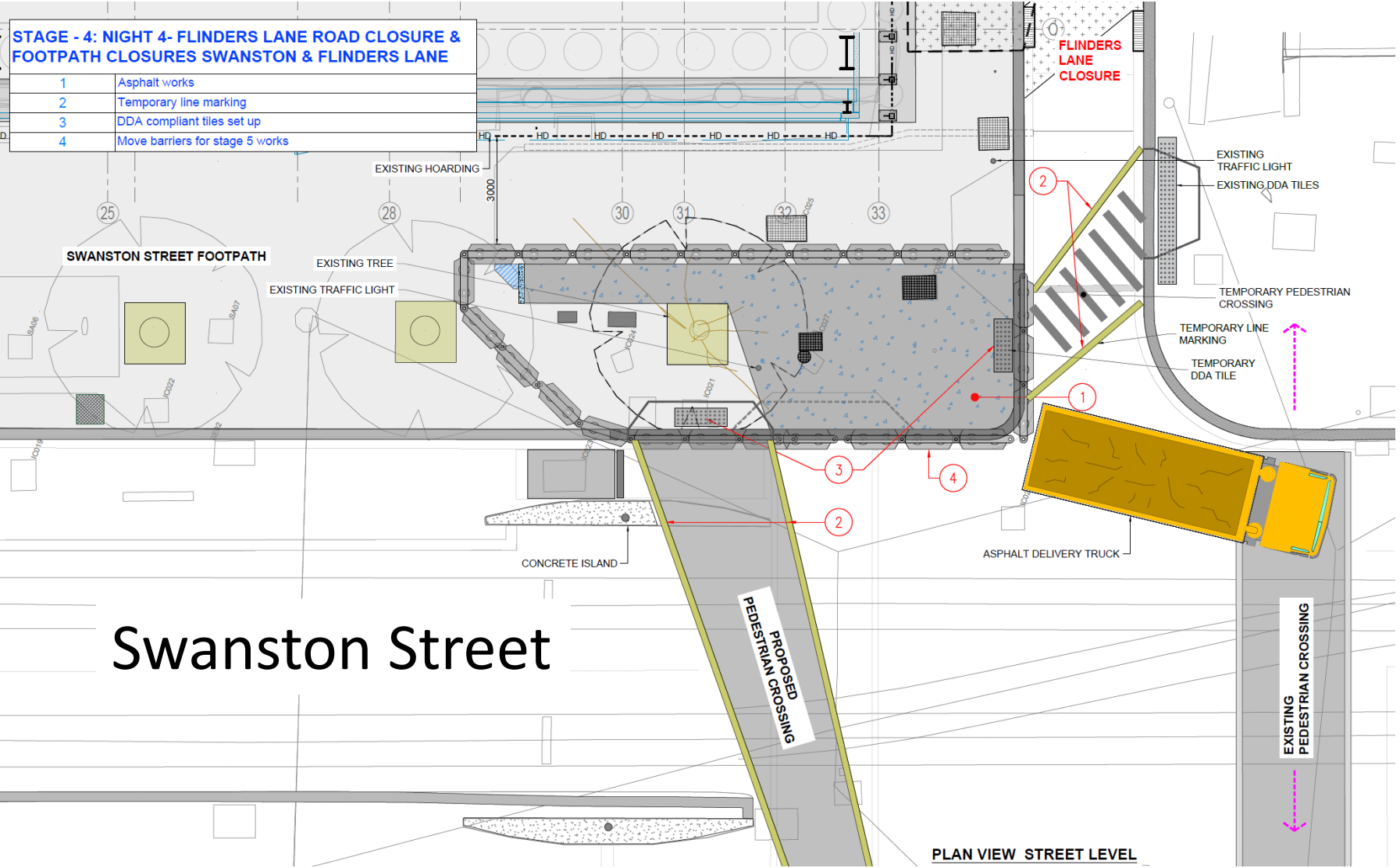


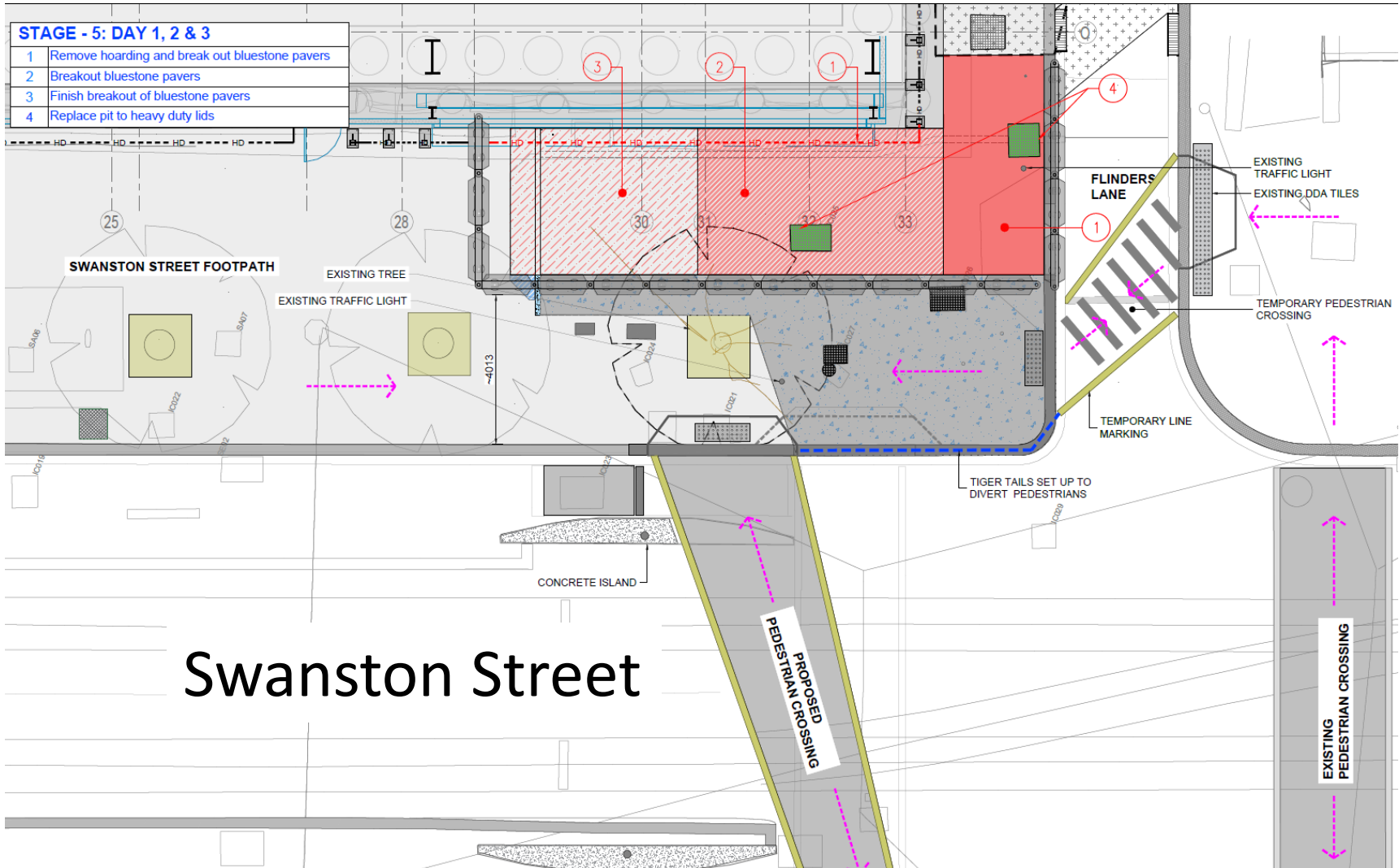


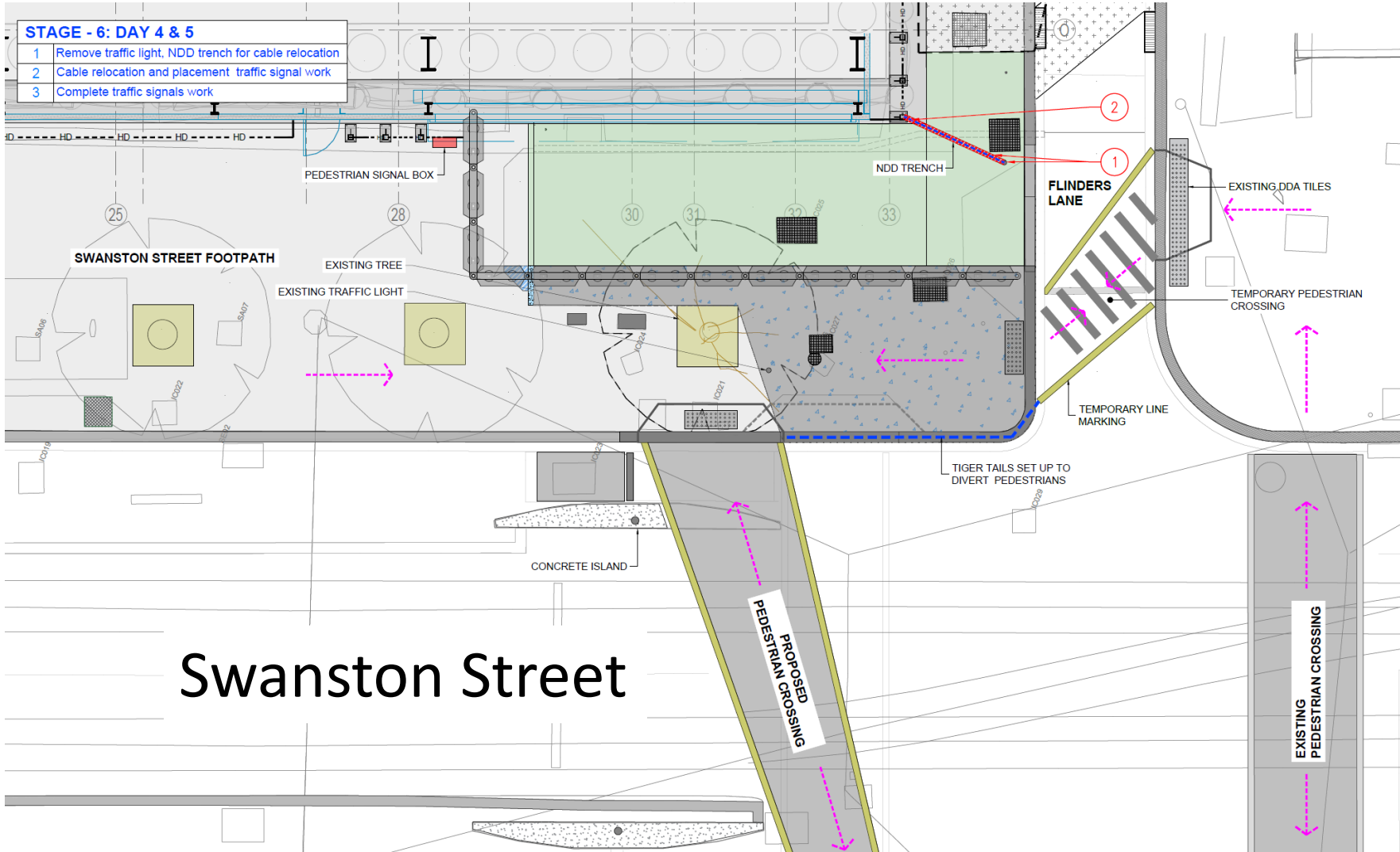


# Swanston Street



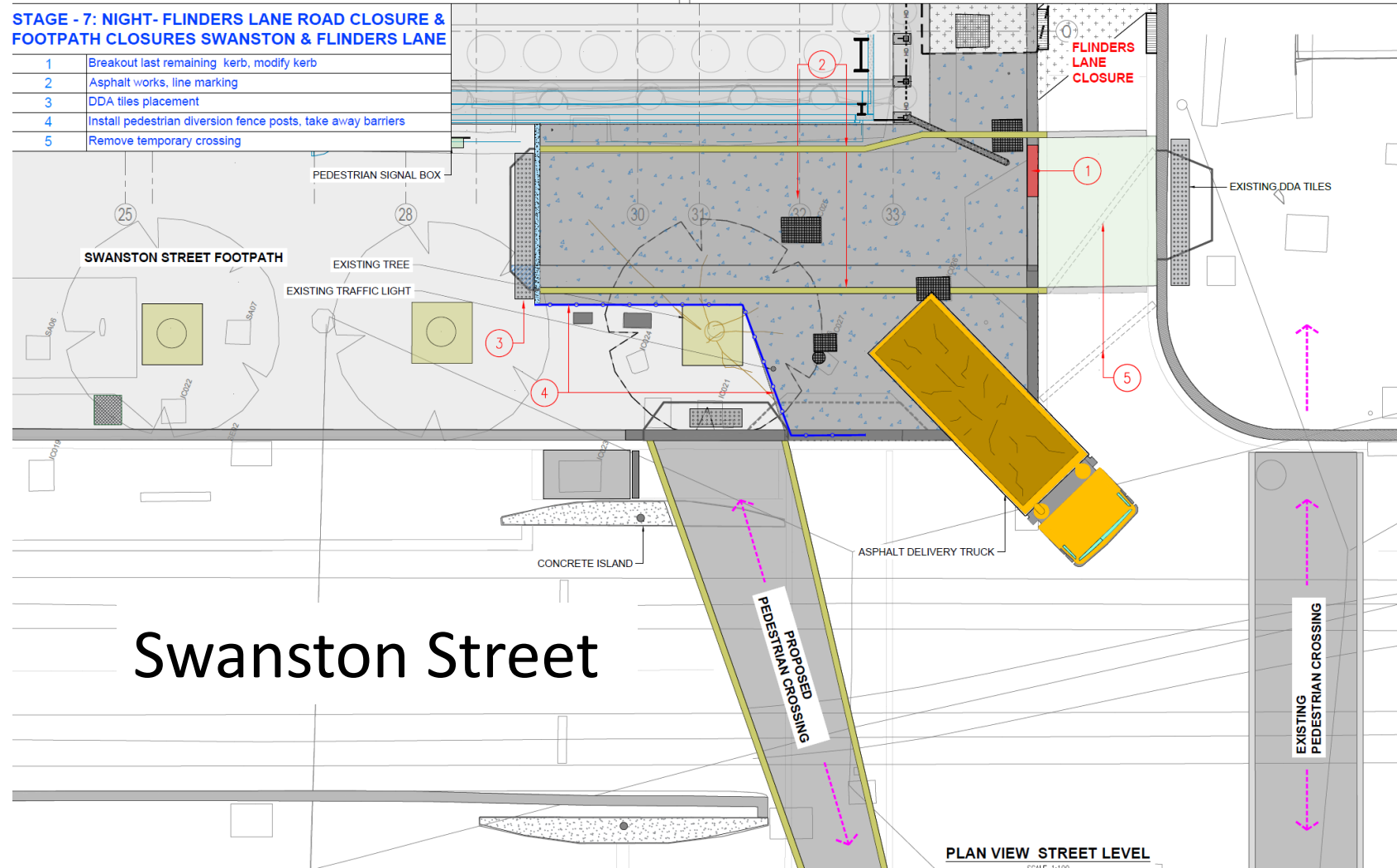






**STAGE - 7: NIGHT- FLINDERS LANE ROAD CLOSURE & FOOTPATH CLOSURES SWANSTON & FLINDERS LANE**

- 1 Breakout last remaining kerb, modify kerb
- 2 Asphalt works, line marking
- 3 DDA tiles placement
- 4 Install pedestrian diversion fence posts, take away barriers
- 5 Remove temporary crossing



Swanston Street

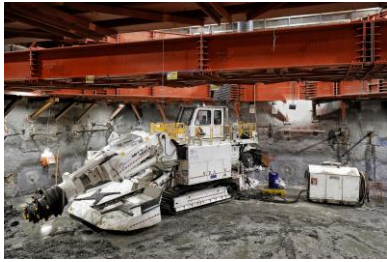
PLAN VIEW STREET LEVEL

# STATE LIBRARY STATION UPDATE



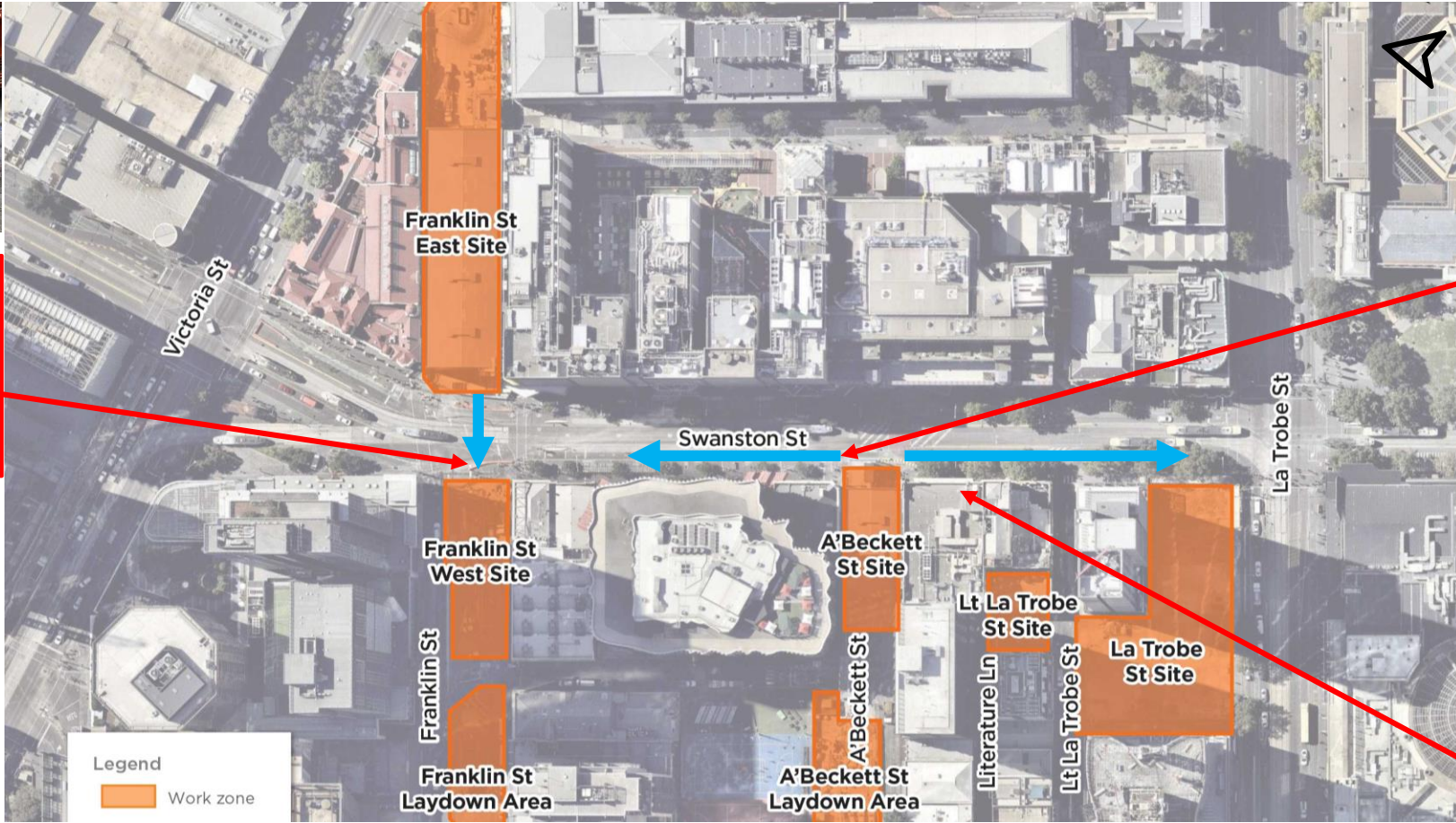
**EXCAVATION UPDATE**

# EXCAVATION UPDATE



*Louise is heading west across Swanston Street and has completed over 40 metres*

*Road header #4 arriving July 2019*



*Jane is moving north and has already excavated 58 metres*



*Clara is moving south and has excavated 72 metres*

# A'BECKETT SHAFT PROGRESS VIDEO







## FRANKLIN STREET WEST UPDATE

# FRANKLIN ST WEST – WORKS UPDATE

Activity	Location	Jun	Jul	Aug	Sept	Oct	Nov	Dec
Capping beam	Site	—						
Deck construction	Site	—						
Acoustic shed construction	Site			—				
Shaft excavation	Site						—	



## LITTLE LA TROBE STREET UPDATE

# LITTLE LA TROBE STREET WORKS UPDATE

Activity	Jun	Jul	Aug	Sept	Oct	Nov	Dec
Archaeology	—	●					
Piling pad construction		●	—				
Piling		●	—	—	—	—	—



**LA TROBE STREET UPDATE**

# LA TROBE STREET SITE UPDATE

Activity	Location	Jun	Jul	Aug	Sept	Oct	Nov	Dec	
Excavation (temporary shaft)	Site	—●							
Adit excavation	Site		●—	—		●			
Perimeter piling and plunge columns	Site	————							
Ground slab construction	Site						●—		
La Trobe St service works	La Trobe St	—●							



**TEMPORARY SHAFT LA TROBE STREET**

# OUT OF HOURS WORKS

EXTENDED HOURS	
<b>La Trobe Street site</b>	7am – 6pm, Monday to Fridays, 7am-6pm Saturday (piling works) 6pm-10pm Monday to Fridays (concrete pours as required) 10pm-7am Monday to Fridays (tunneling support within shaft) 7am-10pm Saturday 22 June (Swanston Street scaffolding removal)
<b>La Trobe Street Service relocations</b>	7am-6pm works, Mondays to Sundays 8pm-5am Mondays to Sunday from June 22 until mid-July
<b>Franklin Street West</b>	7am-6pm Monday to Saturdays until August (capping beam, deck & strutting)
<b>Oversized plant and equipment deliveries</b>	intermittently at all sites between 10pm – 7am, Monday to Fridays as per relevant approvals



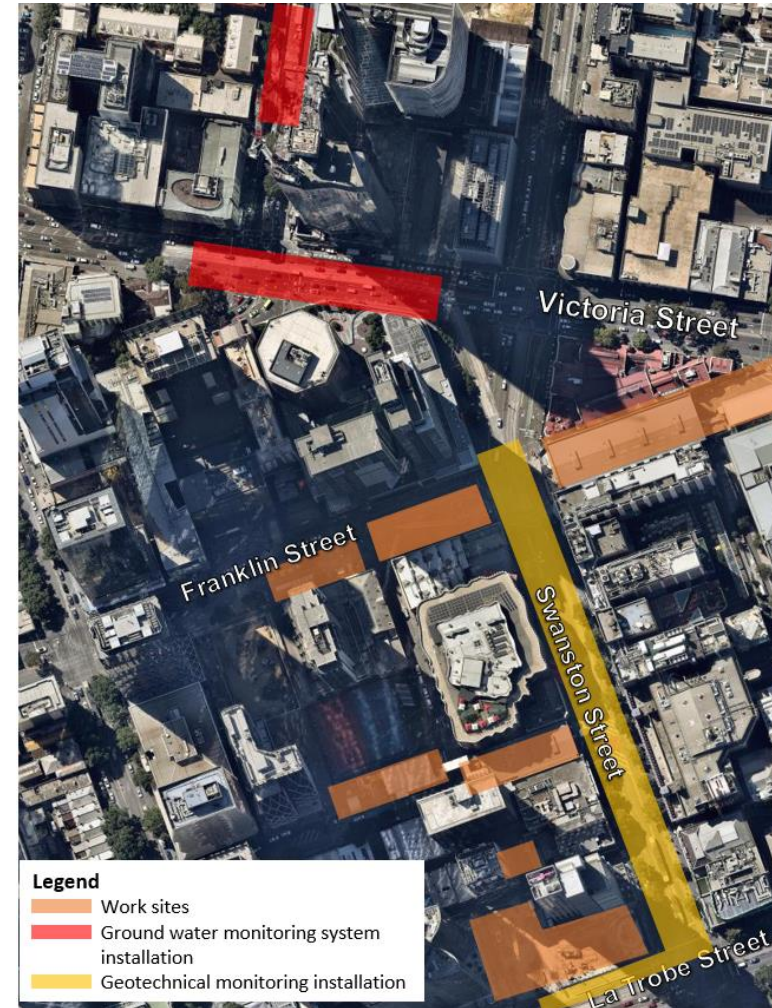
# GEOTECHNICAL AND GROUNDWATER MANAGEMENT

## Ground water monitoring

- Ongoing– intermittent, Franklin, Victoria and Therry Streets

## Geotechnical monitoring

- Ongoing- Swanston and La Trobe Streets, 1am to 5am, Sunday to Fridays



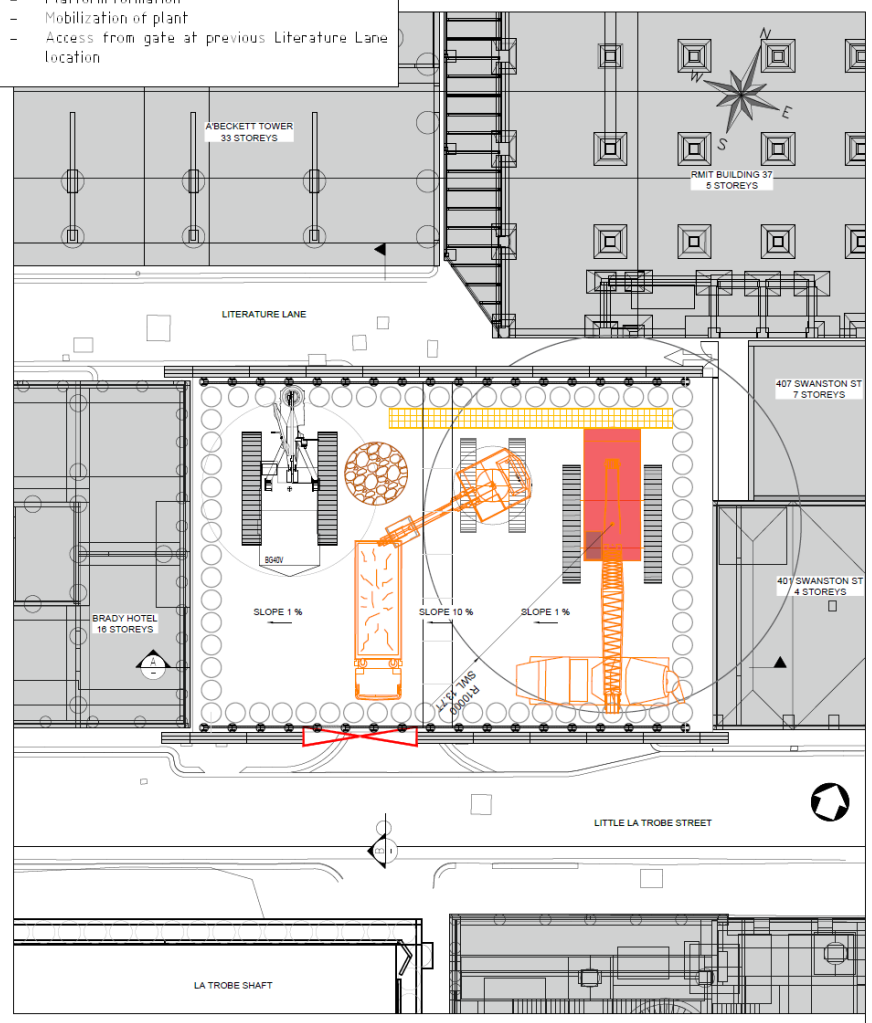


# LITERATURE LANE PARTIAL CLOSURE

**Stage 1: Piling**

- Platform formation
- Mobilization of plant
- Access from gate at previous Literature Lane location

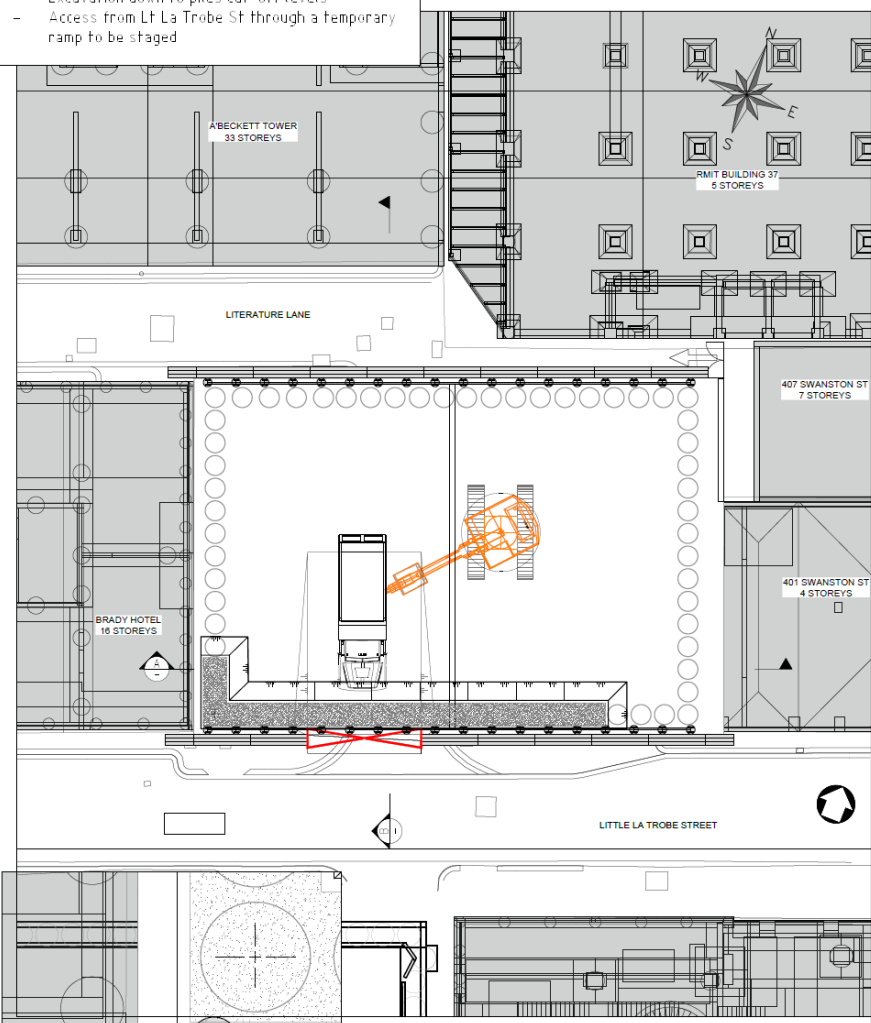
- Platform formation



Plan view

**Stage 2: Pile cutting and construction of capping beam**

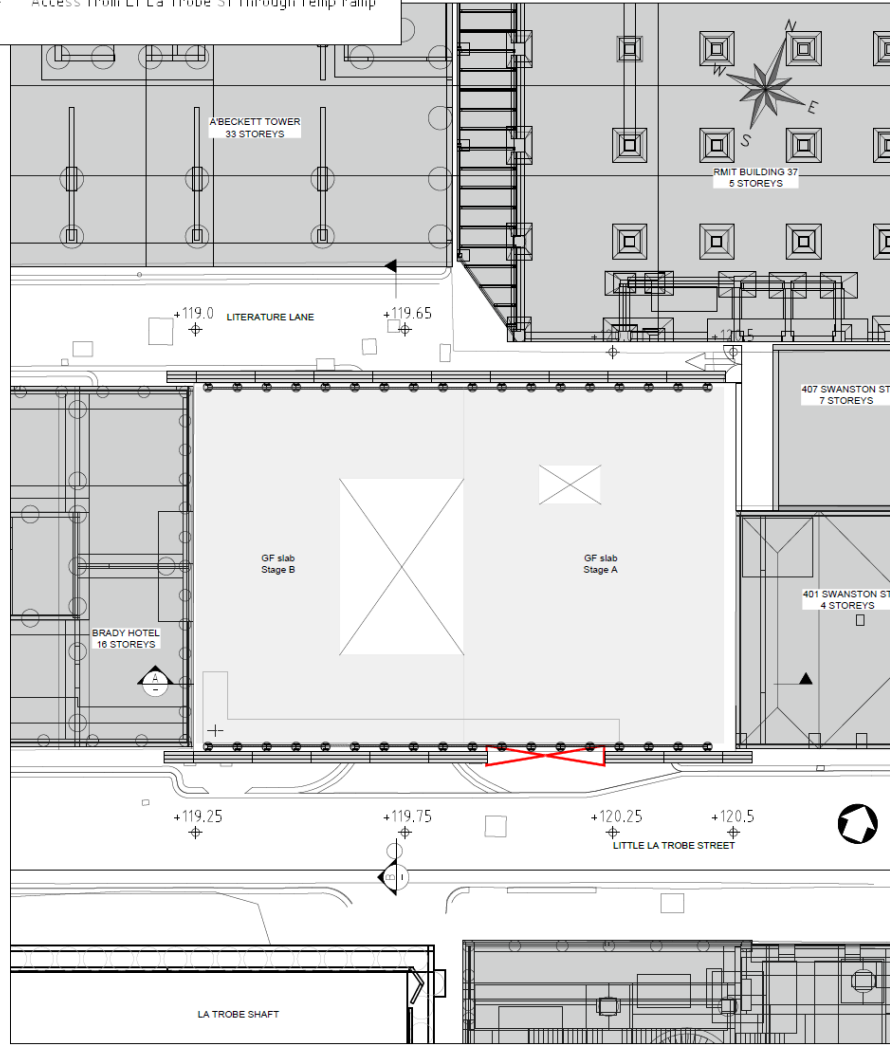
- Excavation down to piles cut-off levels
- Access from Lt La Trobe St through a temporary ramp to be staged



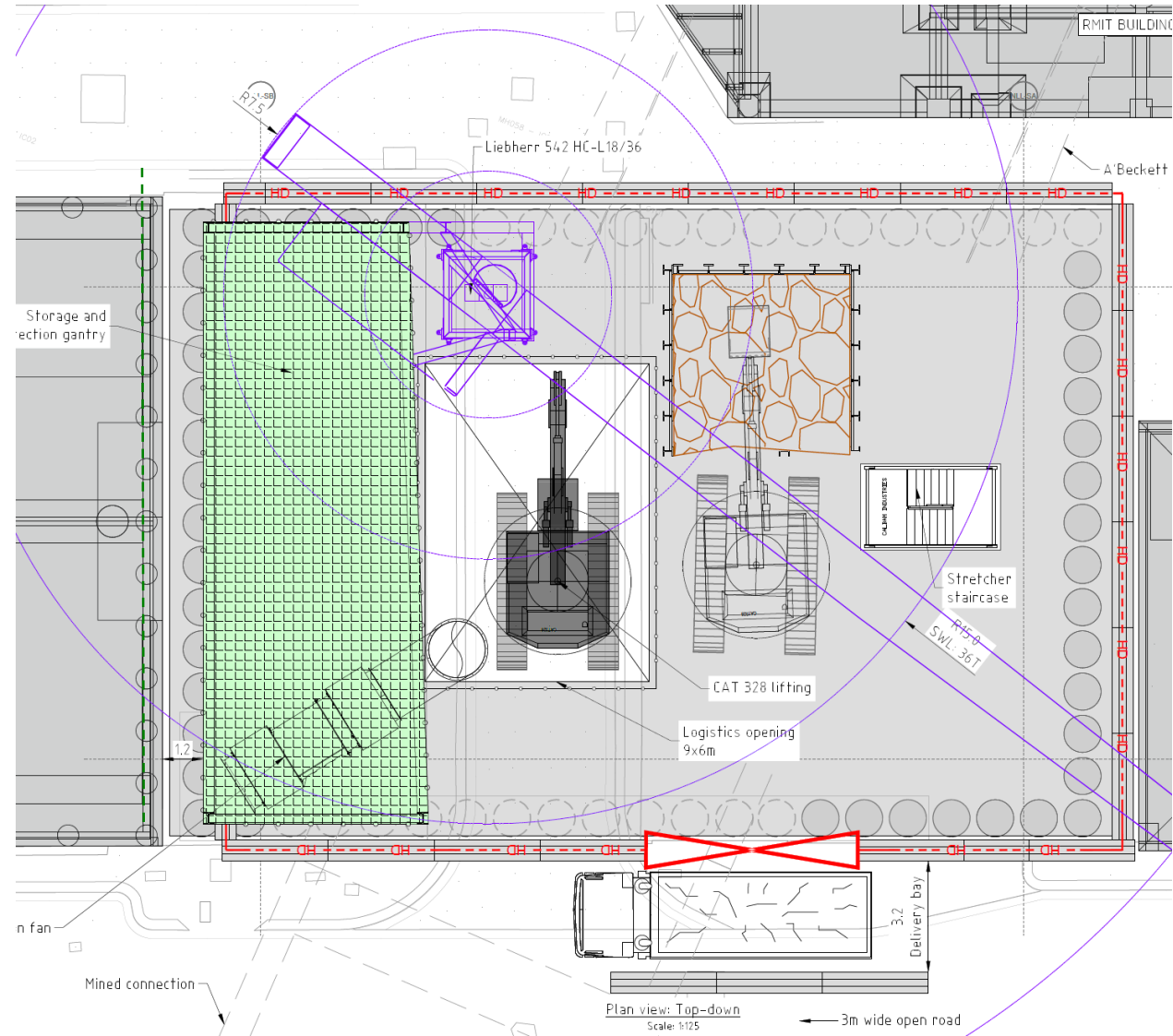
Plan view

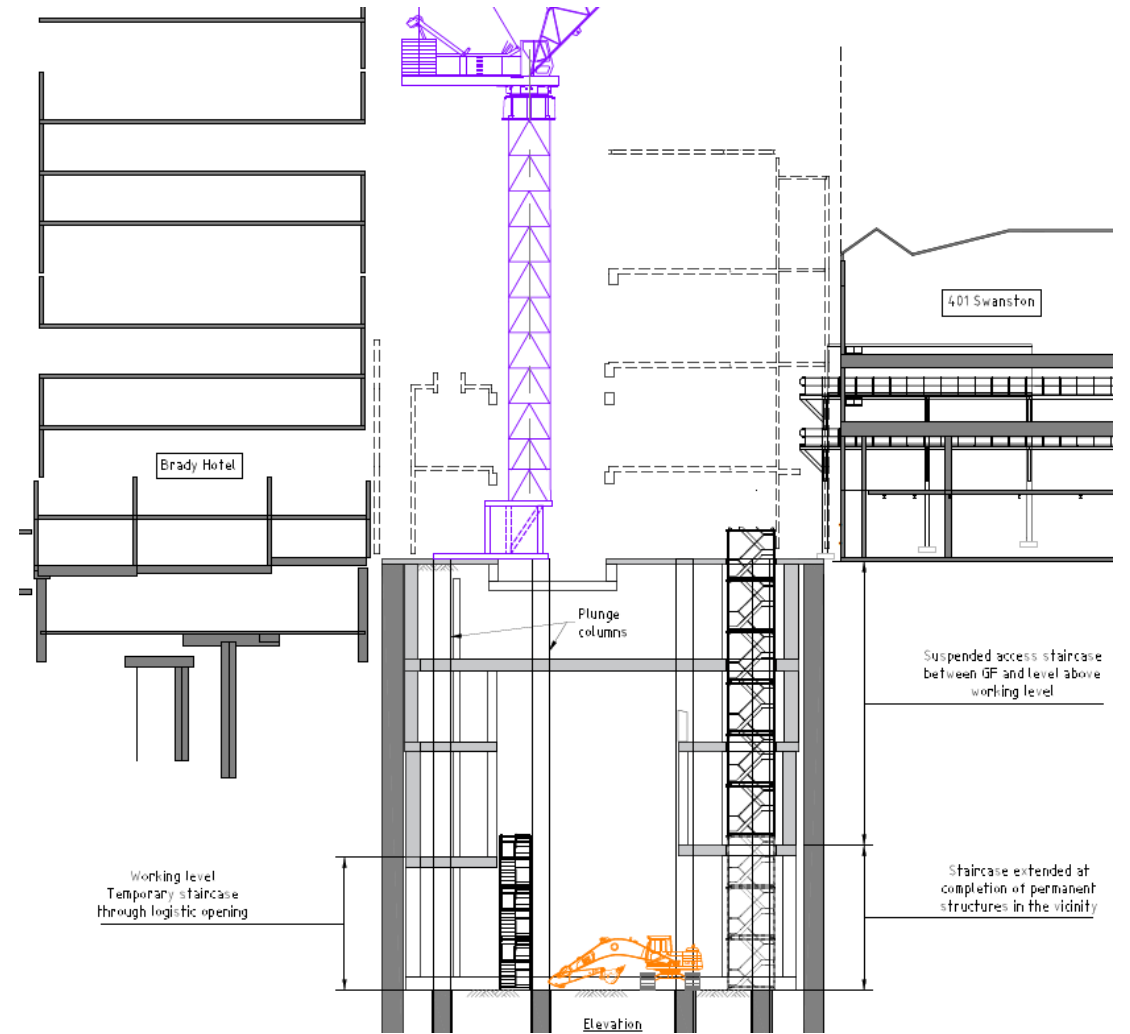
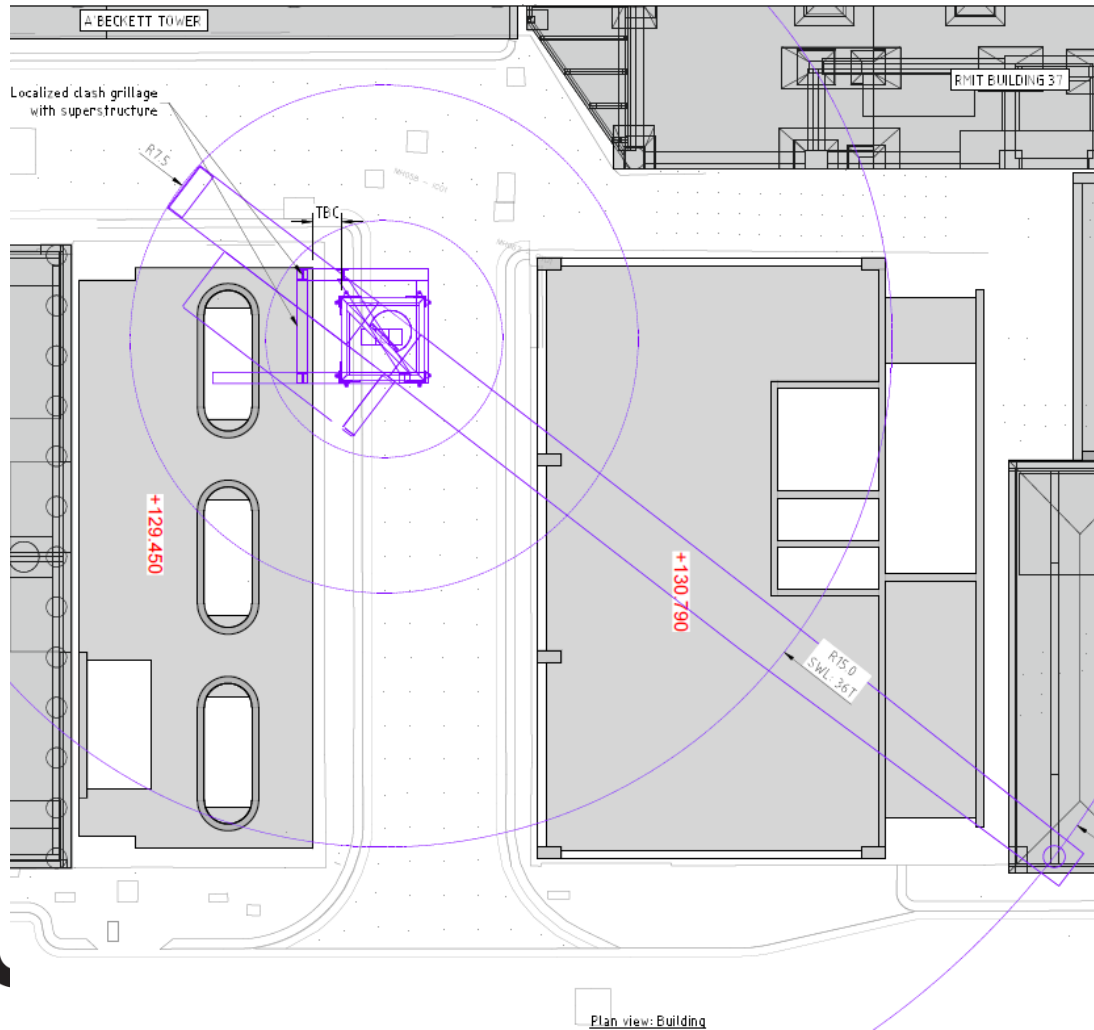
Stage 3: Ground floor slab construction

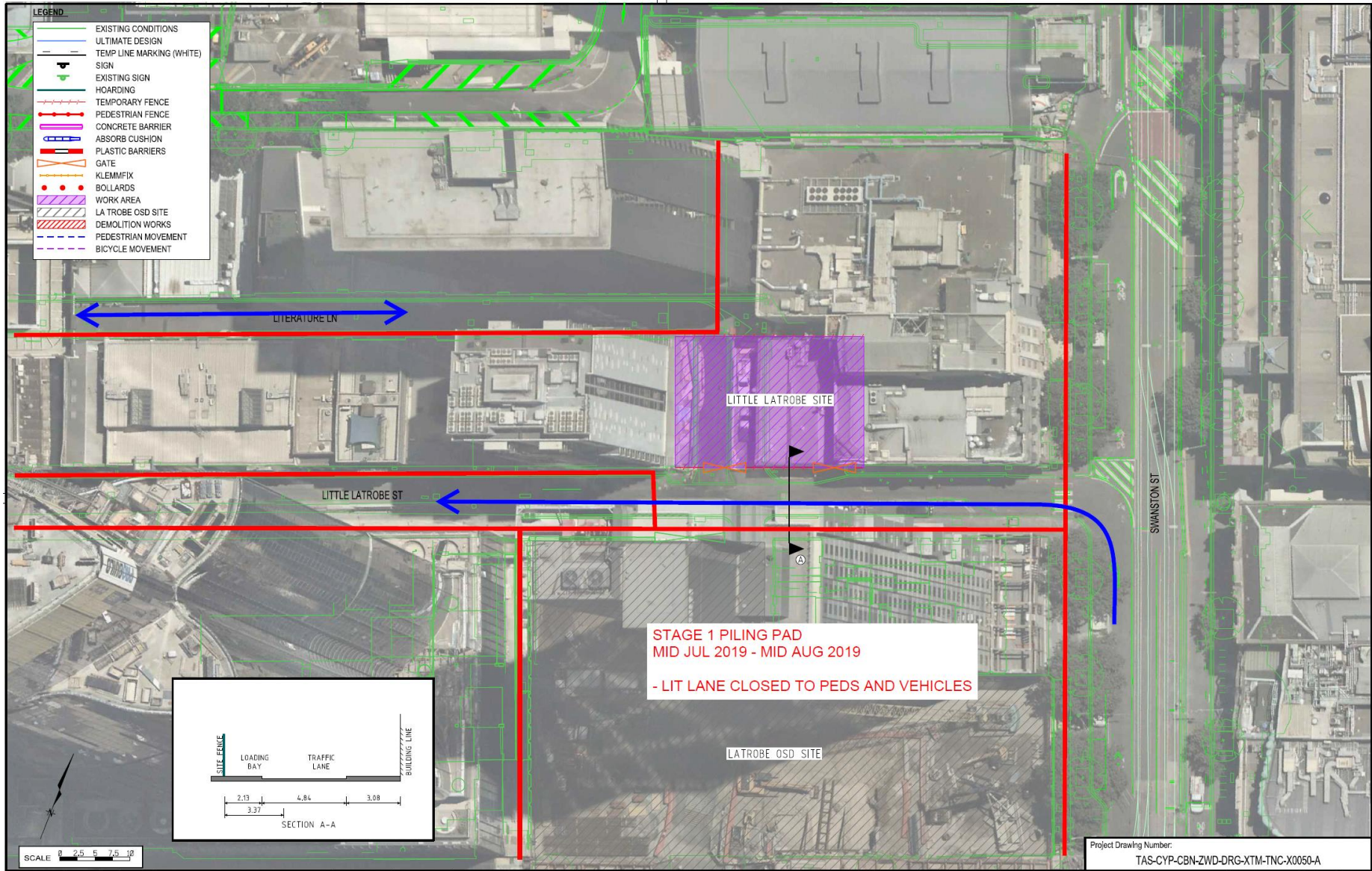
- Excavation from capping beam to be refilled
- Access from Lt La Trobe St through temp ramp

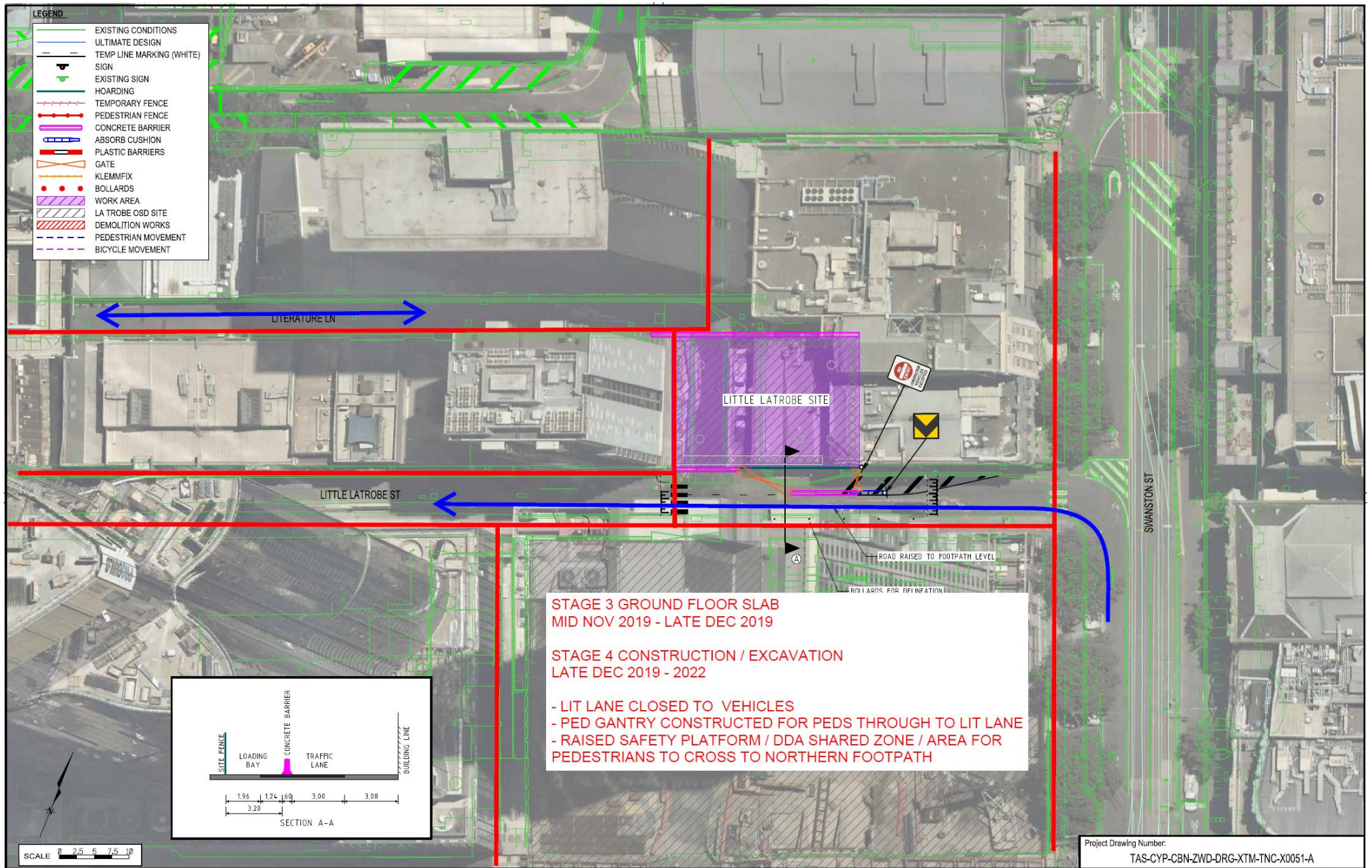


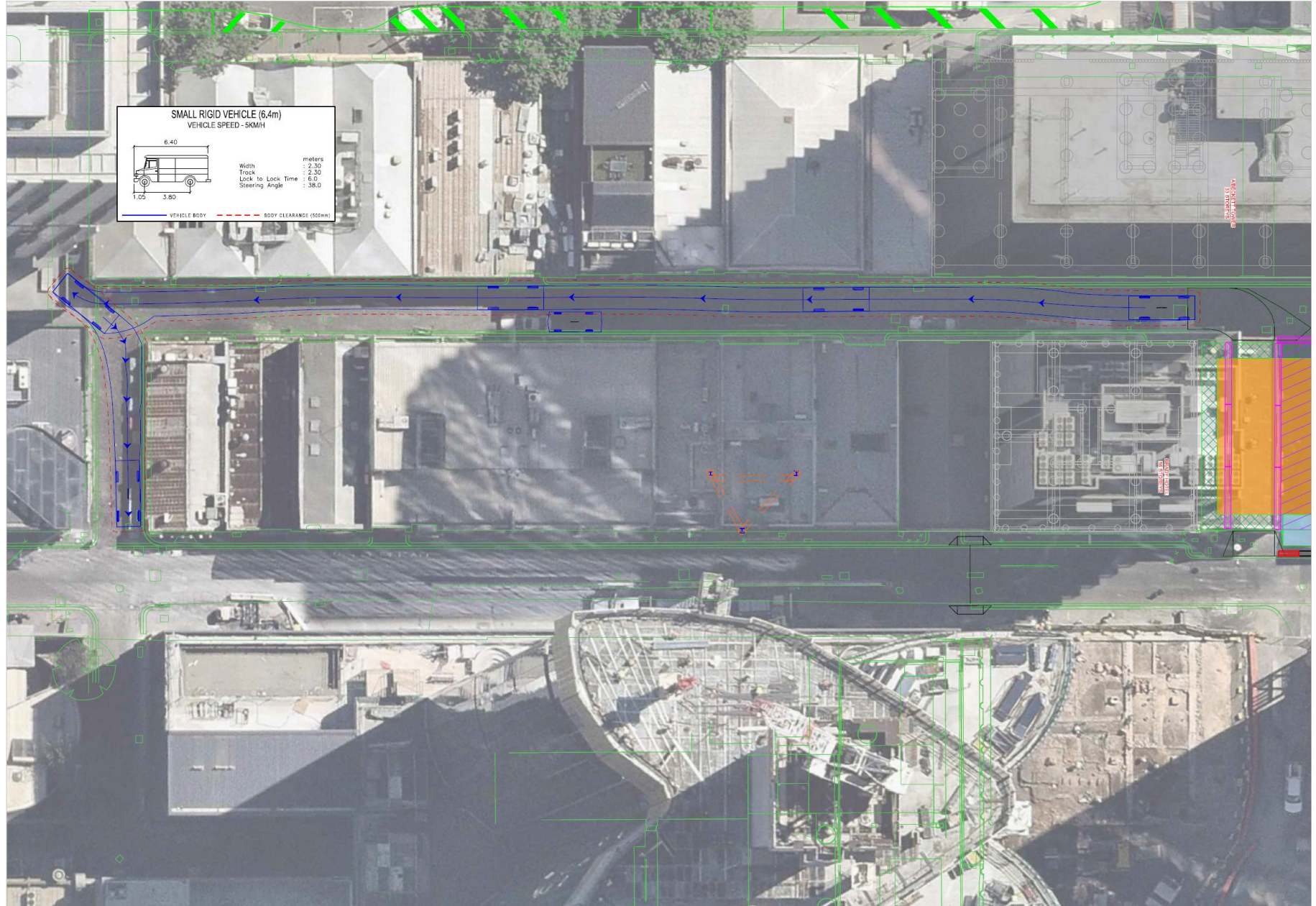
Plan view









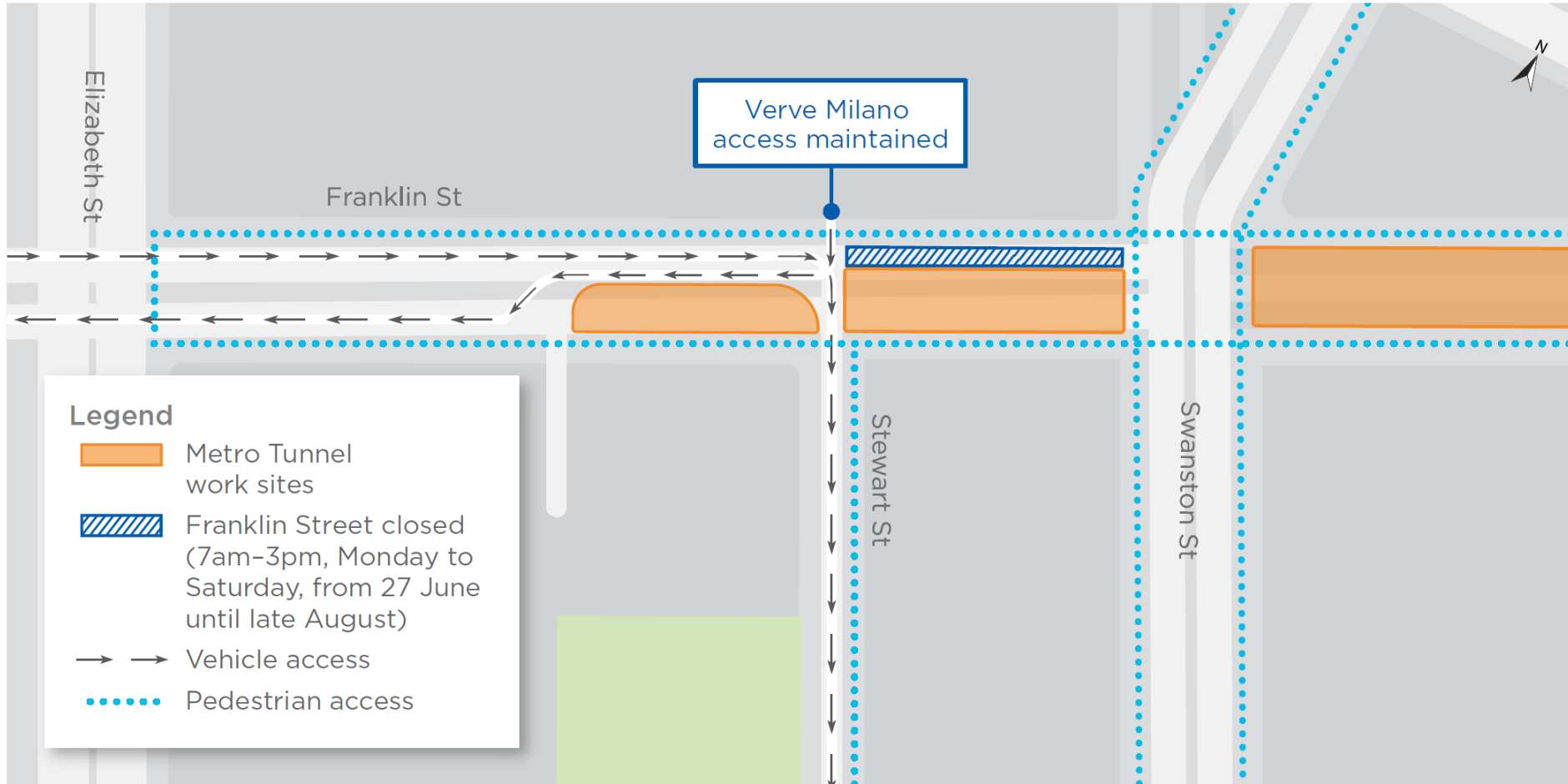




# FRANKLIN STREET WEST

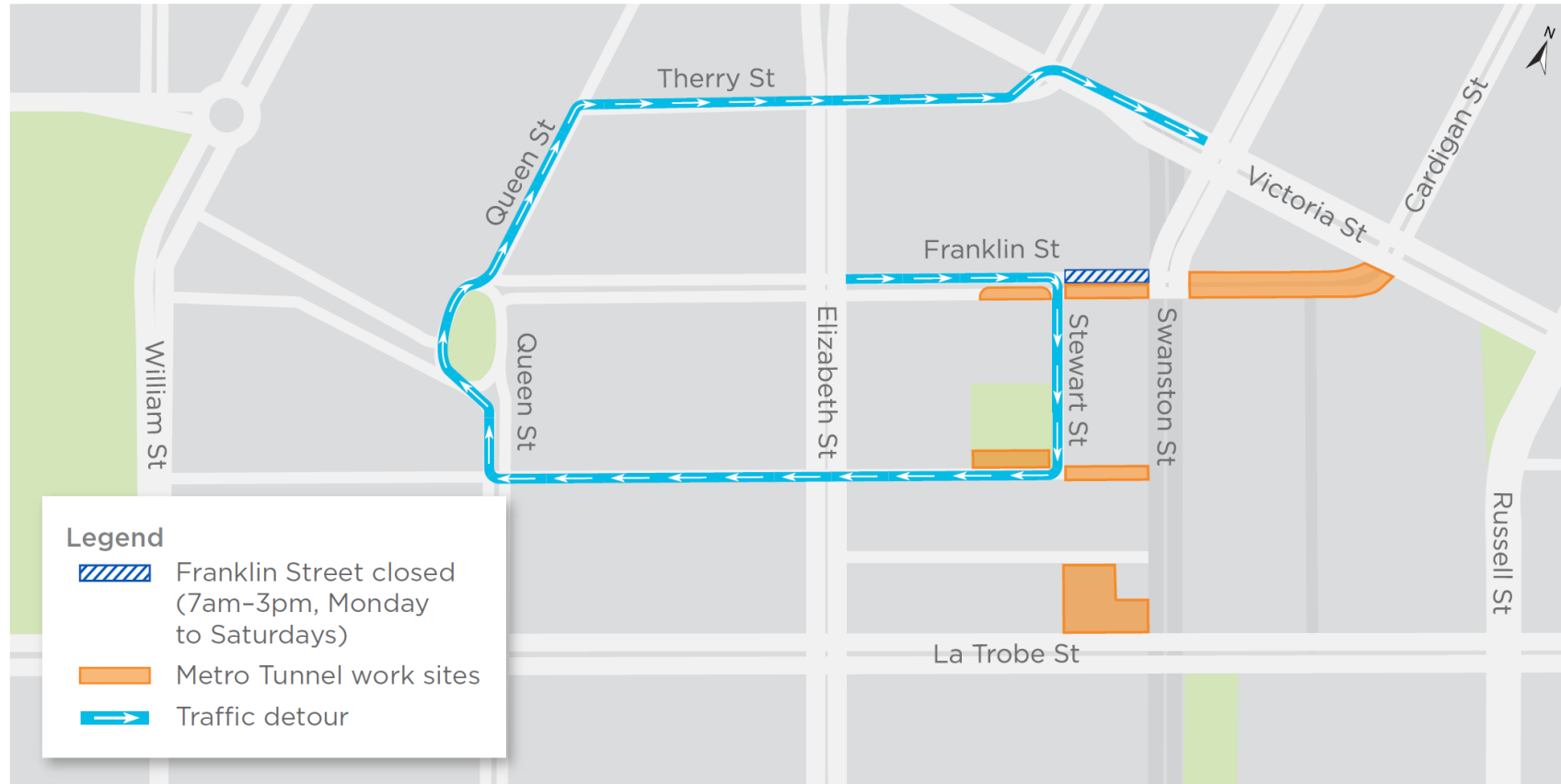


# TEMPORARY CHANGES TO FRANKLIN STREET WEST



# TEMPORARY CHANGES TO FRANKLIN STREET WEST

## Traffic detour around closure



Indicative only

# QUESTIONS?

