



## DOMAIN COMMUNITY REFERENCE GROUP

**Meeting #24**

Wednesday 5 August, Online Meeting



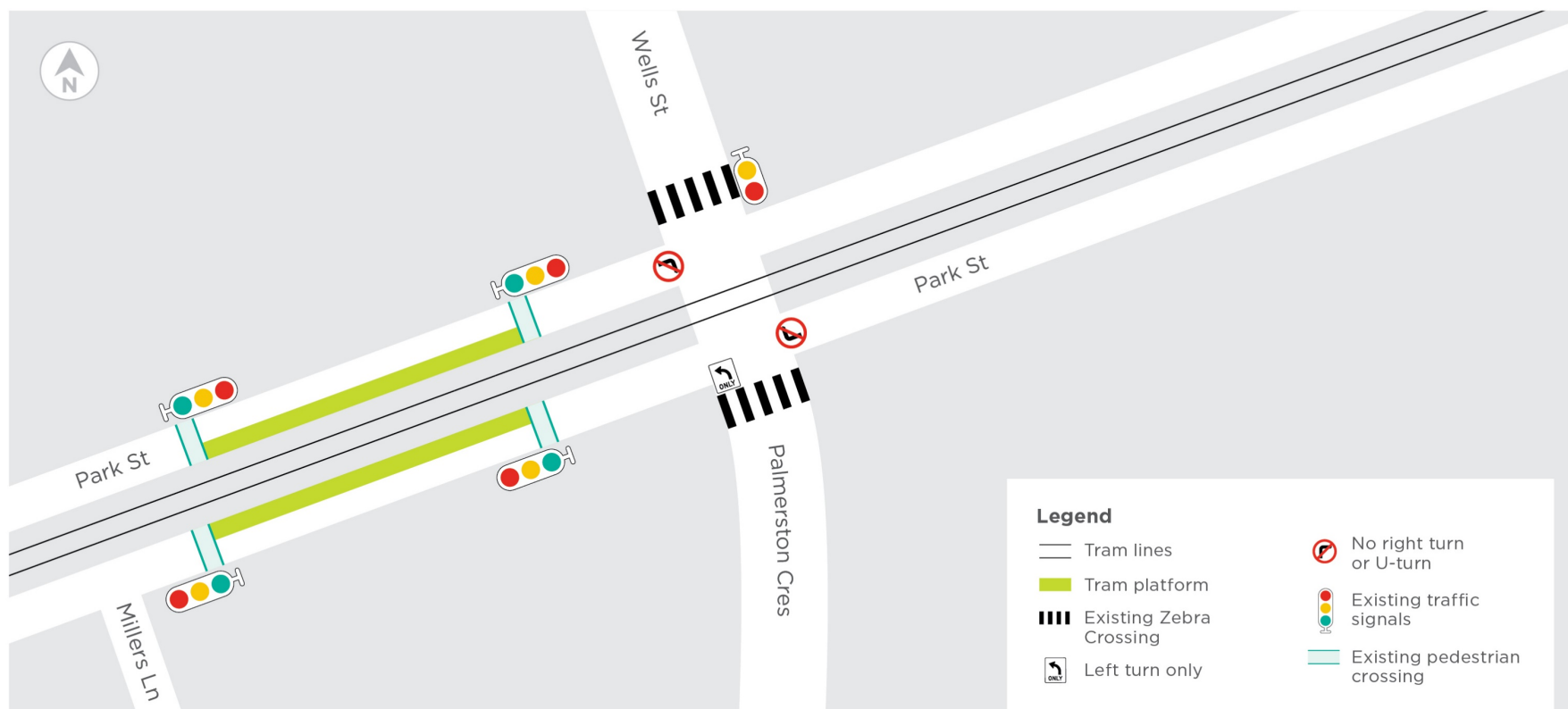
# PARK AND WELLS ST SIGNALISATION

# PARK AND WELLS ST SIGNALISATION

- To address essential **safety** and **operational performance** issues, RPV is working with the Department of Transport (VicRoads) on a proposal to fully signalise this intersection
- Fully signalised solution is supported by DoT (VicRoads), Yarra Trams and City of Port Phillip (CoPP)
- Signalisation of all currently allowed traffic movements and improvement to safety of pedestrian movements
- Local access will continue to be discussed between CoPP, DoT and RPV
- RPV will inform key stakeholders - local residents and businesses – as design is finalised

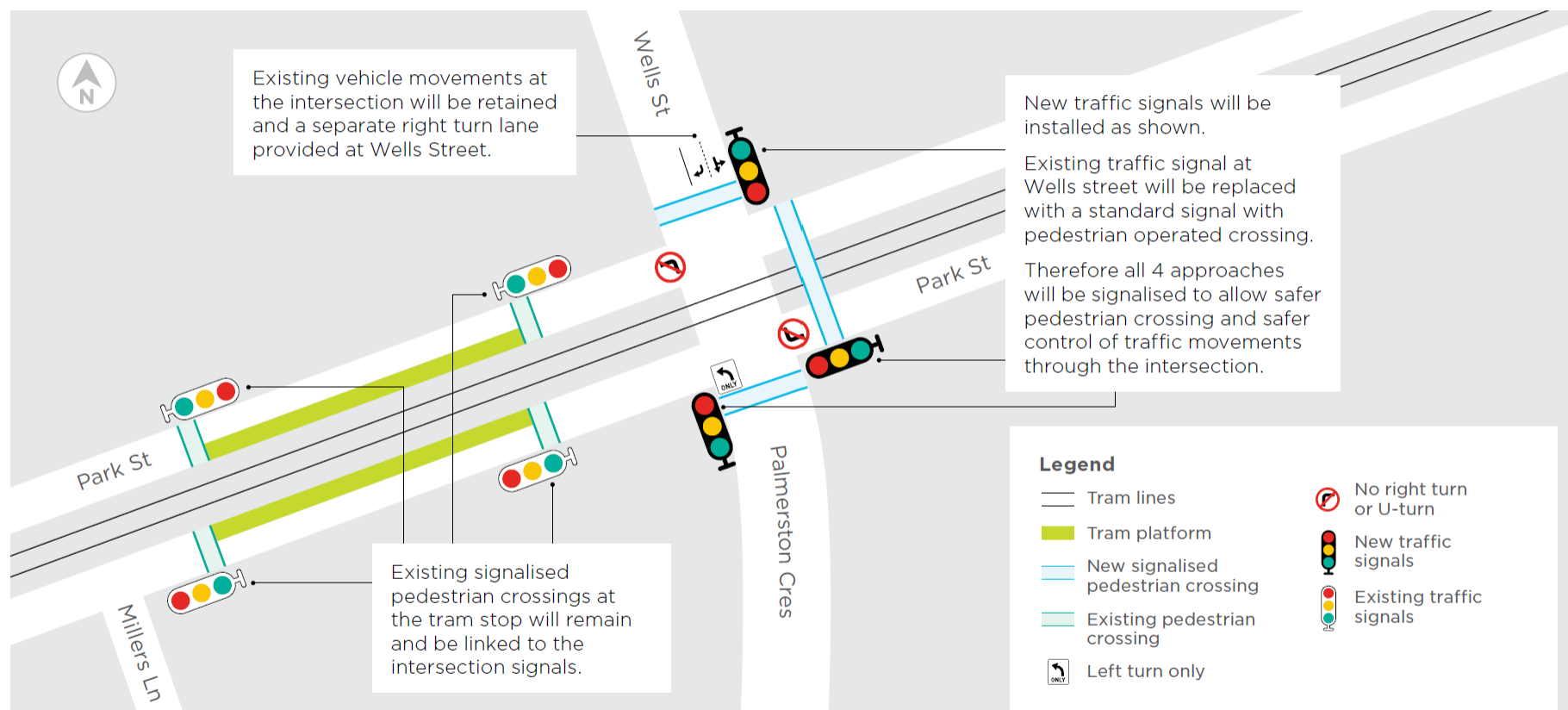
## Park Street & Wells Street

### Existing signalisation



## Park Street & Wells Street

Planned signalisation works (Subject to design)

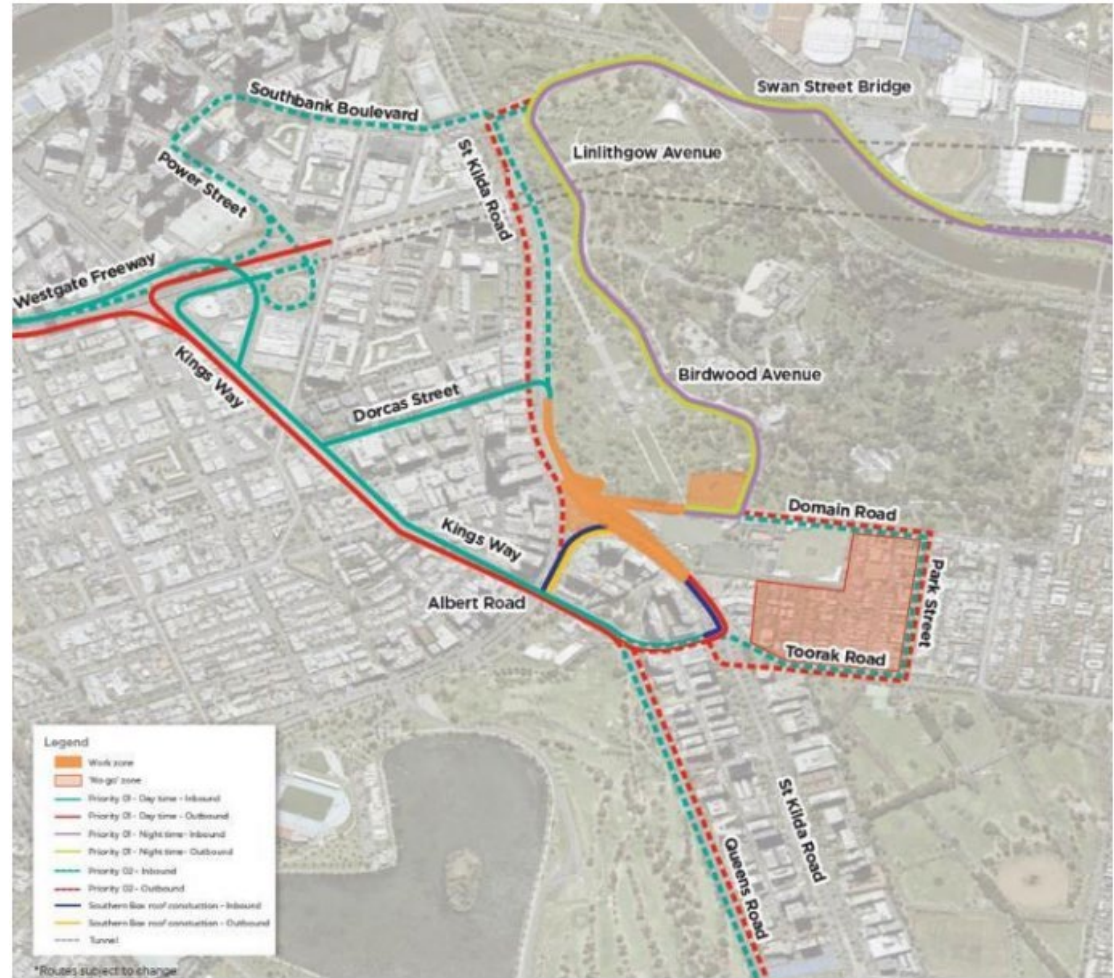




# KEY ISSUES

# TRUCKING ROUTES - 2018

- Trucks are currently operating overnight taking soil from Edmund Herring Oval (EHO) to disposal sites around Melbourne
- Previous access and egress routes shown at the CRG (pictured) included Dorcas Street and Southbank Boulevard. These routes are no longer available for spoil disposal.
- As a result, trucks travelling between the Westgate Freeway and Edmund Herring Oval are currently using the available major arterial route: St Kilda Road, Toorak Road, Kings Way
- In response to the feedback from residents, CYP have worked with both City of Port Phillip, City of Melbourne and RPV to identify alternative truck routes

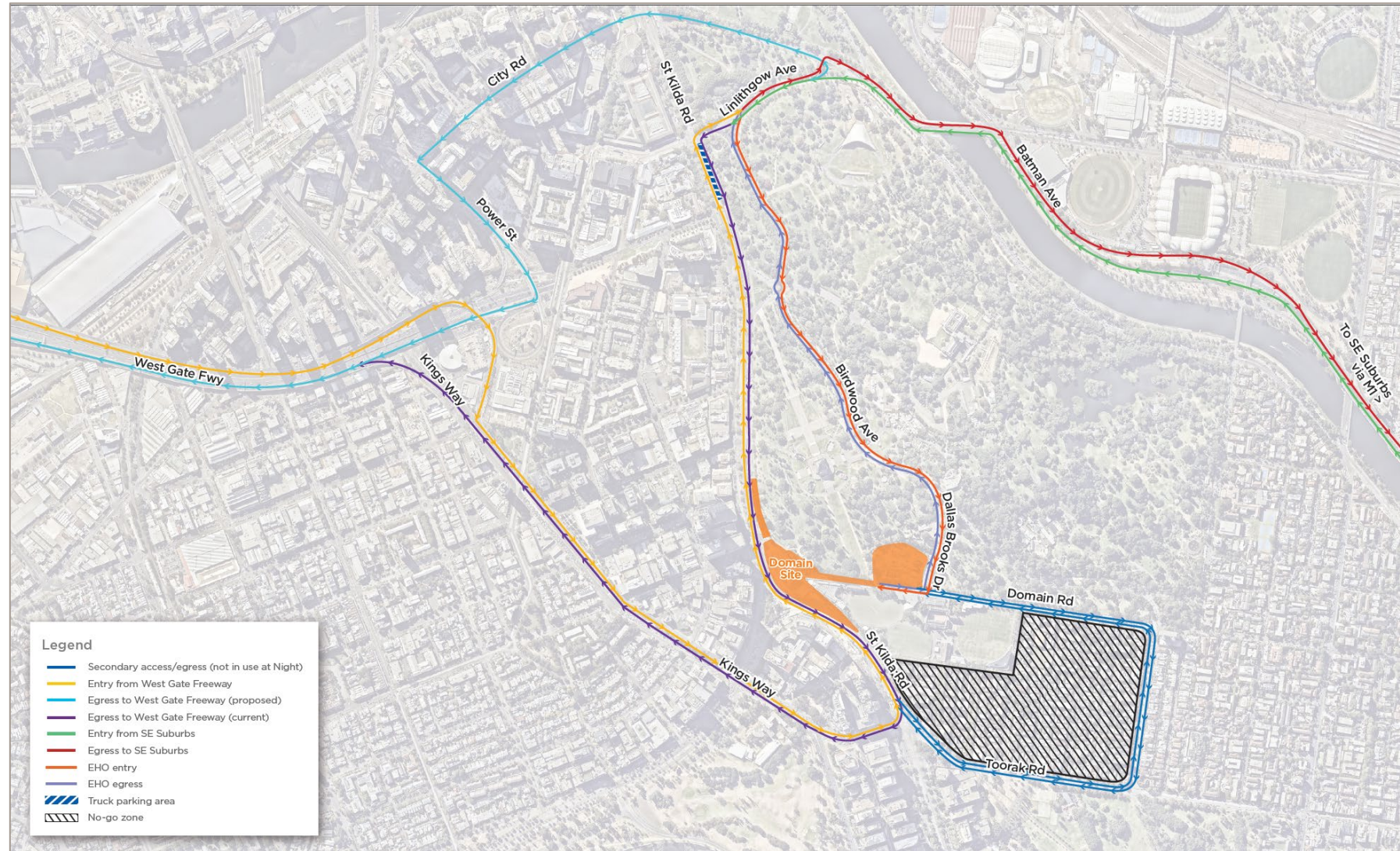


All trucking routes as shown in CRG – December 2018



# EHO SOIL REMOVAL ROUTES - 2020

- CYP are currently undertaking the necessary safety reviews to send trucks heading to the Westgate out via Linlithgow Avenue and Alexandra Avenue.
- CYP is working to identify other routes for returning trucks to access Edmund Herring Oval from the Westgate Freeway.
- Regular compliance checks and discussions with the trucking company are also ongoing



EHO Spoil Removal Truck Routes  
Note: Subject to change





# EDMUND HERRING OVAL INFRASTRUCTURE

## Investigation

- CYP conducted a review of tunnelling infrastructure following stakeholder reports of vibration after the TBM had departed
- Acousticians (AAW) attended site and took readings to collect noise and vibration data at residential apartments, on the tunnel pipework and at the Slurry Treatment Plant (STP) on Edmund Herring Oval.
- Low frequency noise from the STP has been identified as cause of vibration within some residential properties

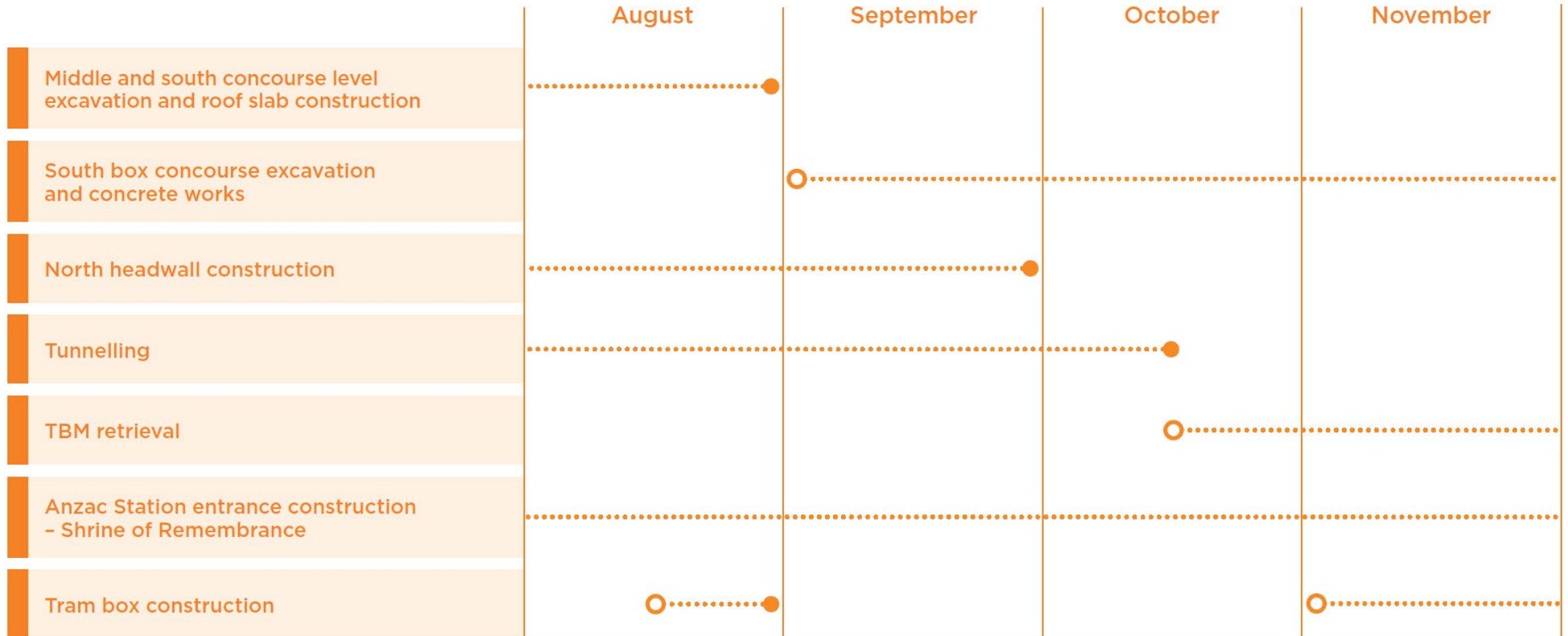
## Review

- Options identified that may potentially alleviate noise
  - STP frequency alignment with attended monitoring to confirm if noise is reduced
  - Phase shifting system (PSS), currently working with supplier to confirm installation (TBC)
- Data review will be conducted after the implementation of mitigation measures to confirm any reductions



# WORKS UPDATE

# ANZAC STATION PROGRAM



All dates current at the time of publication, however are subject to change.

- Construction of the north box headwall that the TBMs will connect to for re-launch in 2021 is continuing in the station box
- Waterproofing has been completed, whilst concreting and reinforcement works are ongoing
- The team is preparing for the major concrete pour later in August



*The construction of the north headwall*



# STATION ENTRANCE – SHRINE OF REMEMBRANCE

- Tension piles were installed in July to start the first stage of piling for the station entrance
- Continuous Flight Auger (CFA) piles will be used this month to complete perimeter piling
- The excavation of the area down approximately 10 metres will then begin



*Piling works underway at the station entrance*



# STATION ENTRANCE – TRAM INTERCHANGE

- CFA piling will soon begin around the perimeter of the station entrance from the future tram platform on St Kilda Road
- Once piling is complete the team will return to excavate the entrance in November



*Obstruction Removal ahead of piling*

# MIDDLE & SOUTH BOX WORKS

- Excavation to concourse level in the middle and south sections of the station box is ongoing
- Up to 330m of cubic soil per day is being excavated through the voids in the roof slab, between the two live tunnels and St Kilda Road



*Inside the excavation of the middle and south box*



# STATION BOX CONSTRUCTION LOOK AHEAD

- Construction will now commence on the final section of the station roof joining the north and south roof slabs
- Once the concourse level excavation is complete, concourse concrete works will commence
- This will involve mobilisation of a crane, underground formwork, reinforcement and concrete pours over a period of several months



*Final section of roof construction*



# TUNNELLING UPDATE

- Both TBMs are progressing well in their drive from the Anzac Station site to South Yarra
- Millie and Alice have turned the corner from St Kilda Road and are travelling underneath Toorak Road and Fawkner Park towards the Eastern Portal
- Millie and Alice have completed over 920 and 735 metres of permanent tunnel respectively



*Millie's eastbound tunnel*





*Inside TBM Alice*



*Concrete segments being lowered to the TBM*



# CURRENT TBM LOCATIONS





- Procedure for emergency works has been reviewed
- Supervisors to advise Community Contact regarding incident, remedial actions and expected time frames
- Community and Environment teams to determine potentially impacted stakeholders and most appropriate means of communications
- Community team to make contact with impacted stakeholders



*Middle box roof slab pour one*

# NOISE MONITORING

# SHRINE ENTRANCE/MIDDLE BOX EXCAVATION WORKS – DAY TIME

## Activities modelled:

- Bentonite slab break out
- Shrine piling
- Middle box formwork, reinforcement, Pour (FRP)
- Middle box backfill
- Middle box excavation

Building	Modelled dB <u>L<sub>Aeq</sub></u> (15min)				Measured level dB <u>L<sub>Aeq</sub></u> (15min) MTEM
	Bentonite slab break out	Shrine piling + middle box FRP + EHO	Shrine piling + middle box backfill + EHO	Shrine piling + middle box excavation + EHO	
The Domain	64	70	76	70	65 – 78
The Botanica	65	65	68	66	64 - 73
Hallmark Apartments	71	67	69	67	64 - 70
Domain Hill	65	64	67	65	63 - 69

\* Additional elevated levels due to middle box breakout

Day time external noise target dB L<sub>Aeq</sub>(15min)

Noise Affected: 66dB>

Highly Noise Affected: 75dB>



# NOISE MODELLING

## What's involved:

- CFA piling in the tram box
- Middle box concrete pours
- Shrine reinforcement and concreting works

Building	Unmitigated predicted noise level dB LAeq(15min)
The Domain	78
The Botanica	66
Hallmark Apartments	75
Domain Hill	76

*\* Modelled noise levels are unmitigated*

## What's involved:

- Excavating soil beneath the roof slab



Building	Unmitigated predicted noise level dB LAeq(15min)
The Domain	67
The Botanica	63
Hallmark Apartments	65
Domain Hill	64

*\* Modelled noise levels are unmitigated*



# CREATIVE PROGRAM UPDATE







- Decks resealed to improve slip resistance
- Extra signage instructing people not to sit on benches
- Creative Program is now working with RPV and City of Melbourne on extending the duration of the park through to May 2021 subject to conditions – including a car parking assessment



# ALBERT ROAD RESERVE POP-UP PARK

- Engineering reports completed
- Install due to happen in October (TBA)
- Communications will roll out advising of what to expect during installation





- In June, opened call for all Victorian creative practitioners to register
- 1600 submissions to the Artist Pool
- Will commission 60 new works in the next six months
- Projects including:
  - Jewellery made from discarded archaeological artefacts
  - New music compositions for Melbourne Music Week
  - New written commissions about Melbourne during the pandemic
  - City Square shed design





# QUESTIONS