



## SOUTH YARRA (EASTERN PORTAL) PRECINCT COMMUNITY REFERENCE GROUP

---

6 AUGUST 2019



# DISCUSSION ITEMS

1. Construction program lookahead
2. Contractors parking in local streets



# PROGRAM

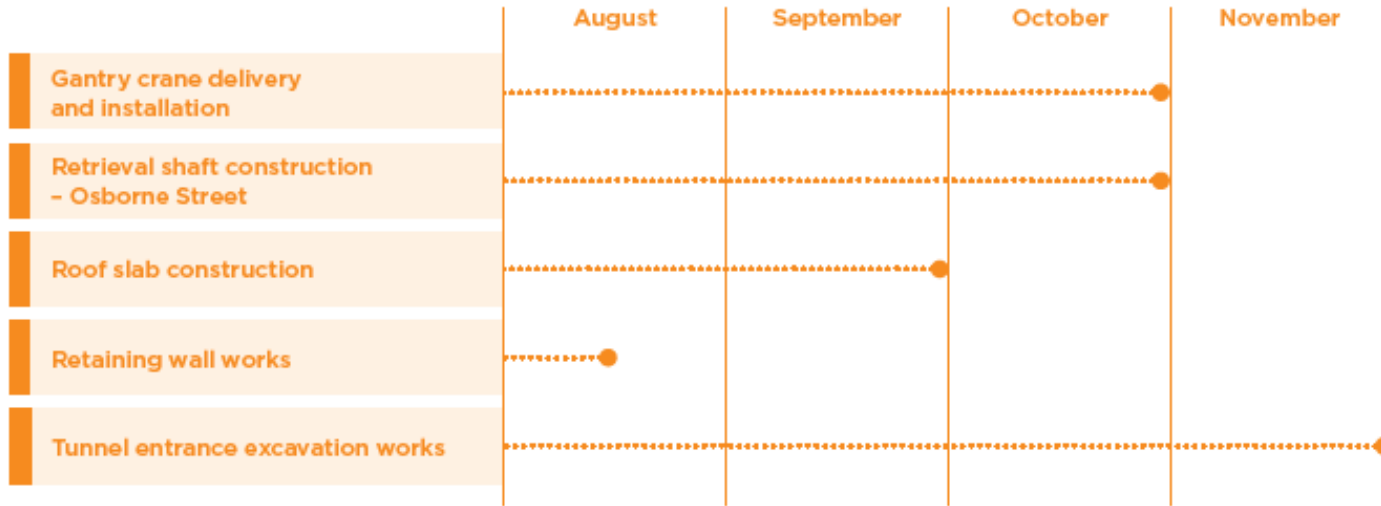
# PROGRESS UPDATE





# CONSTRUCTION PROGRAM

## LOOK AHEAD FOR 2019



# LONGER TERM CONSTRUCTION PROGRAM

## Longer terms works – end of 2019 and into 2020

- Reinstatement of William Street bridge
- Continuation of tunnel construction
- Slewing of tracks for final track alignment
- Excavation of retrieval shaft
- Base slab construction
- Tunnel boring machine (TBM) retrieval
- Connecting the TBM retrieval shaft to the tunnel.

# CONSTRUCTION LOOKAHEAD

## Ongoing works

- Retaining wall works in South Yarra Siding Reserve nearly complete
- Steel tying and fixing – extended work hours in South Yarra Siding Reserve.

## Upcoming works

- Excavation of tunnel entrance
- Egress shaft piling –used for maintenance access in future
- Weekend 24/7 works for signal, overhead wiring and cable installation between Toorak Road and Hawksburn station.

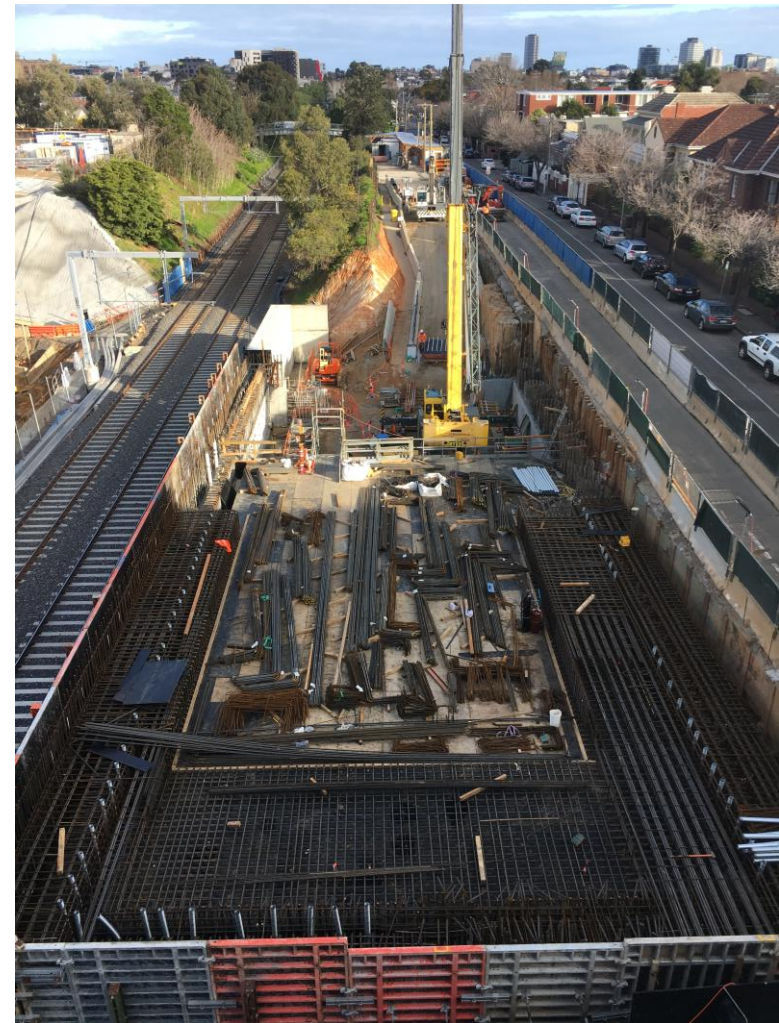




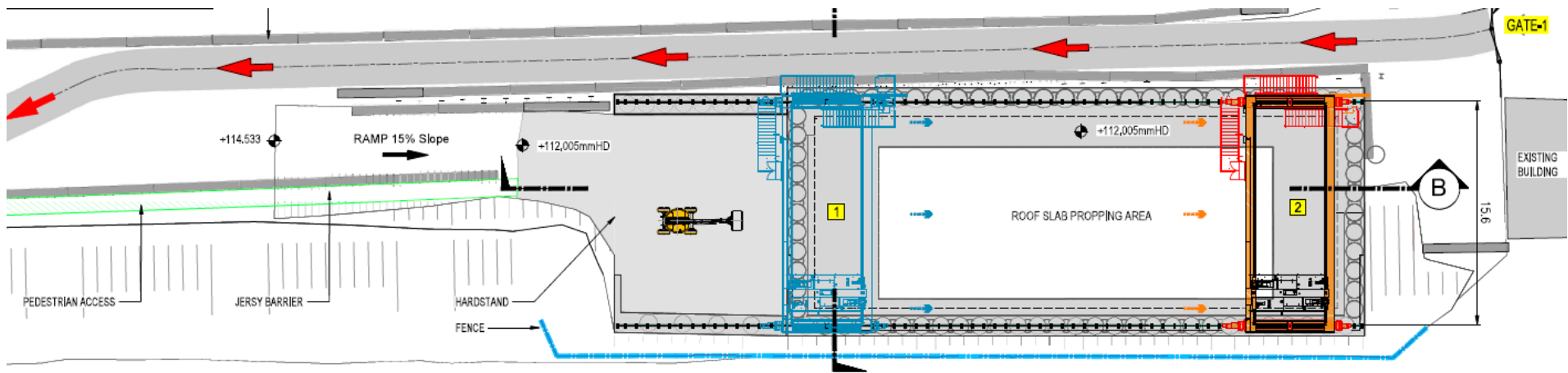
# CONSTRUCTION LOOKAHEAD

## Upcoming works - Osborne Street

- Construction of the walls and roof of the TBM retrieval shaft
- Preparatory works for the installation of the gantry crane that will support ongoing construction activities and retrieve the two TBM cutter heads
- Gantry crane installation.



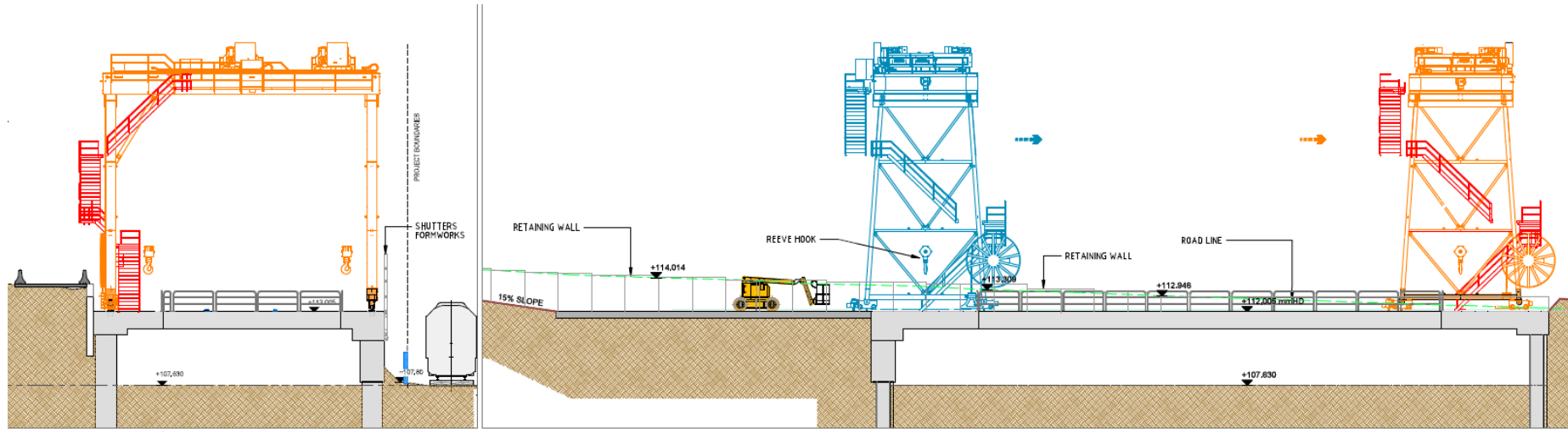
# OSBORNE STREET SITE



# GANTRY CRANE

Height = 12m

Width = 16m





# A CLOSER LOOK AT DE-WATERING



# DE-WATERING

## **Purpose**

- Tunnel entrance excavation sits below groundwater level
- Groundwater level needs to be lowered below the base of the tunnel excavation – for safety and structural integrity.

## **Methodology**

- De-watering pumps have been installed across the works area
- Pumps are connected to generators and a sediment tank which water will be sucked into
- Water will be discharged into the sewer
- Following completion of construction, groundwater will over time return to original levels.

# DE-WATERING

## Impact assessment

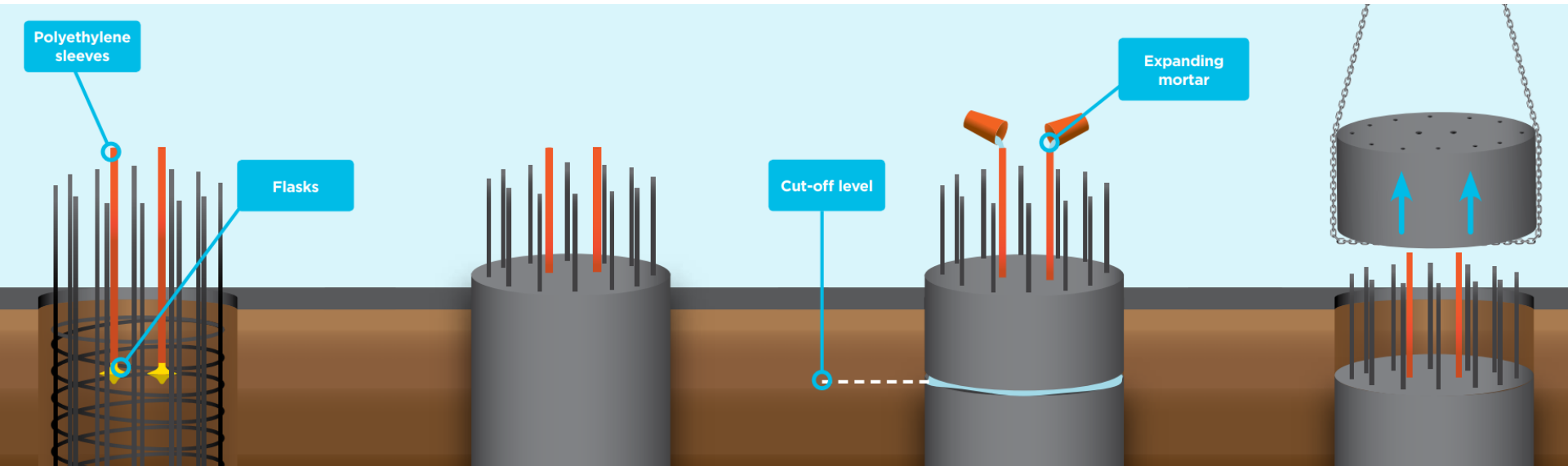
- Hydrogeologists have designed a groundwater model based on investigation works and have undertaken an impact assessment
- No settlement predicted at the Eastern Portal due to ground conditions
- Impact assessment also undertaken on dependent ecosystems, groundwater use and surrounding sites
- Ongoing monitoring will be undertaken to ensure the de-watering system is acting as predicted.





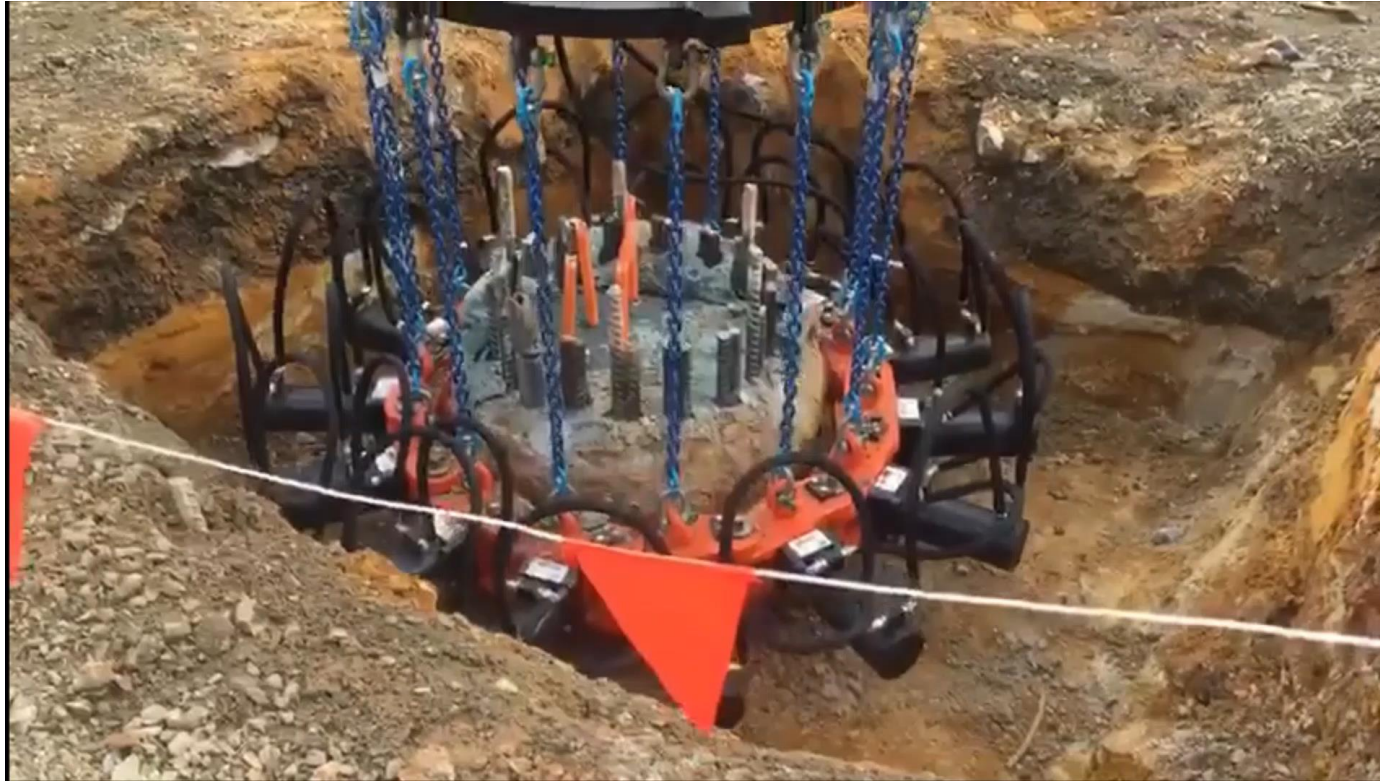
# AN INSIDE LOOK AT PILE BREAK BACK

# CHEMICAL PILE BREAK BACK METHOD





# PILE CROPPING METHOD





# COMMUNITY & COMMUNICATIONS UPDATE

# COMMUNICATIONS

## Recent communications

- August Construction Update distributed to approx. 1,500 residents and businesses, and online distribution list via email
- Additional notifications distributed for works taking place in Palfreyman Street and Surrey Road, and works between Chapel Street and Hawksburn station
- Reminder correspondence for late August 24/7 works will be sent out to impacted residents closer to 31 August

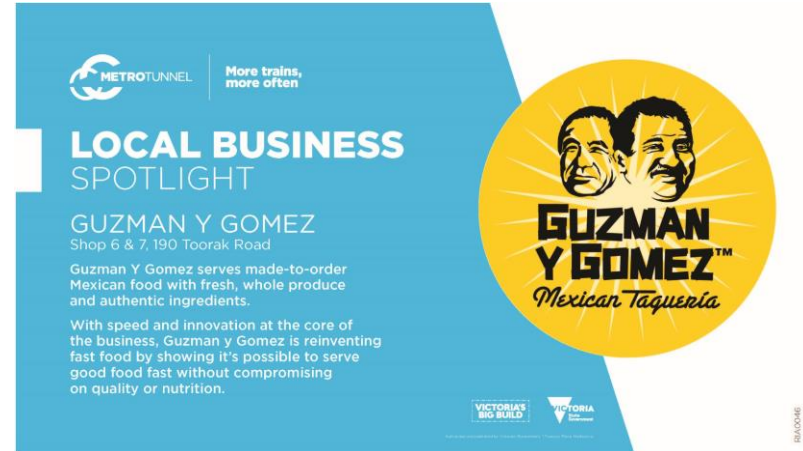
## Development Plan

- Further developed designs for the Rail Infrastructure Alliance will be presented to the community for comment in the coming months. More information to be provided closer to the date.

# COMMUNICATIONS

## Business support

- The public facing screens at the Jam Factory continue to be used to inform the community of upcoming works and to promote local businesses in the area
- Over the past three weeks the screens have featured a promotion for Guzman Y Gomez
- Businesses impacted by Metro Tunnel construction works will be offered promotion opportunities.



**METRO TUNNEL** More trains, more often

### LOCAL BUSINESS SPOTLIGHT

**GUZMAN Y GOMEZ**  
Shop 6 & 7, 190 Toorak Road

Guzman Y Gomez serves made-to-order Mexican food with fresh, whole produce and authentic ingredients.

With speed and innovation at the core of the business, Guzman y Gomez is reinventing fast food by showing it's possible to serve good food fast without compromising on quality or nutrition.

**GUZMAN Y GOMEZ™**  
*Mexican Taqueria*

VICTORIA'S BIG BUILD VICTORIA

BRACOME

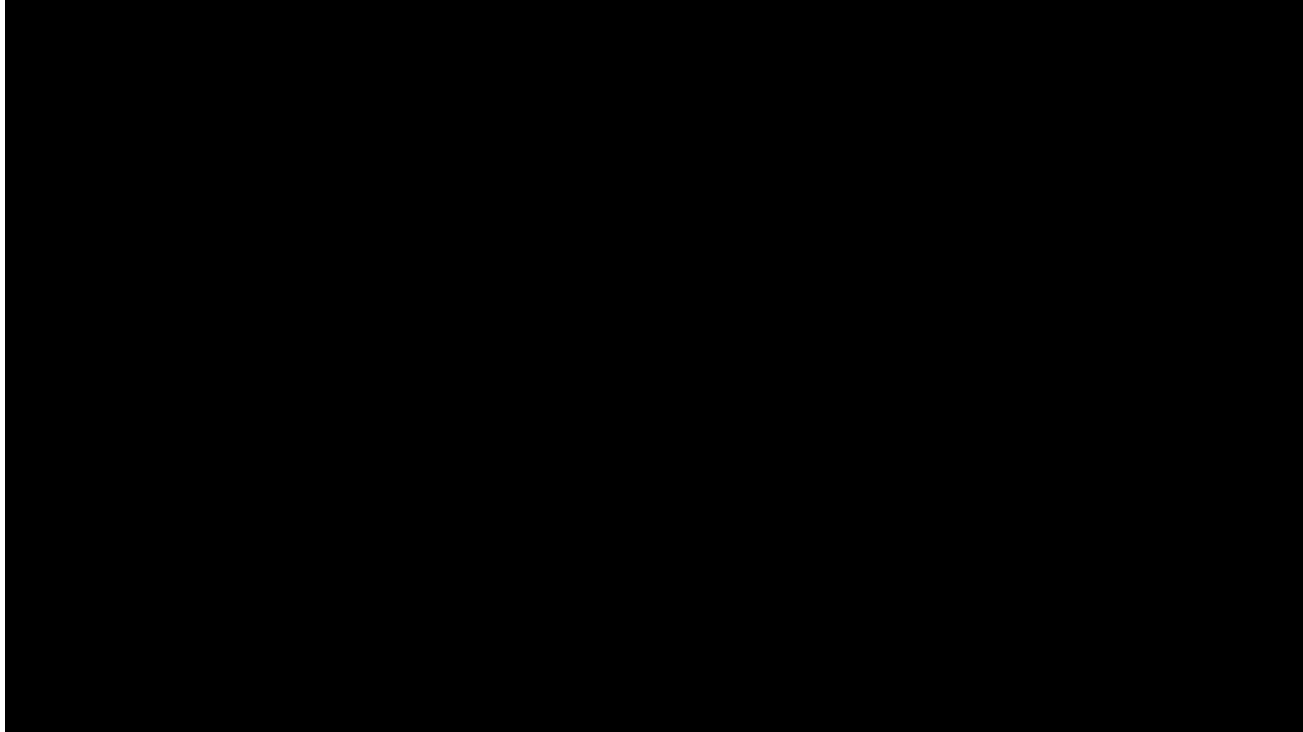
# NORTH MELBOURNE COMMUNITY DAY



# STATE LIBRARY STATION BREAKTHROUGH MILESTONE



# STATE LIBRARY STATION BREAKTHROUGH - VIDEO



# TRAFFIC AND TRANSPORT



# TRAFFIC CHANGES

## Osborne Street

- One day closure to allow for 16-hour concrete pour
- One day closure for crane set-up
- CitiPower electrical works.

## Surrey Road

- Parking removal and traffic management (shuttle flow) for overhead bridge works.

## Palfreyman Street

- Parking removal and temporary closures while cables are installed in the rail corridor.



# TRANSPORT CHANGES

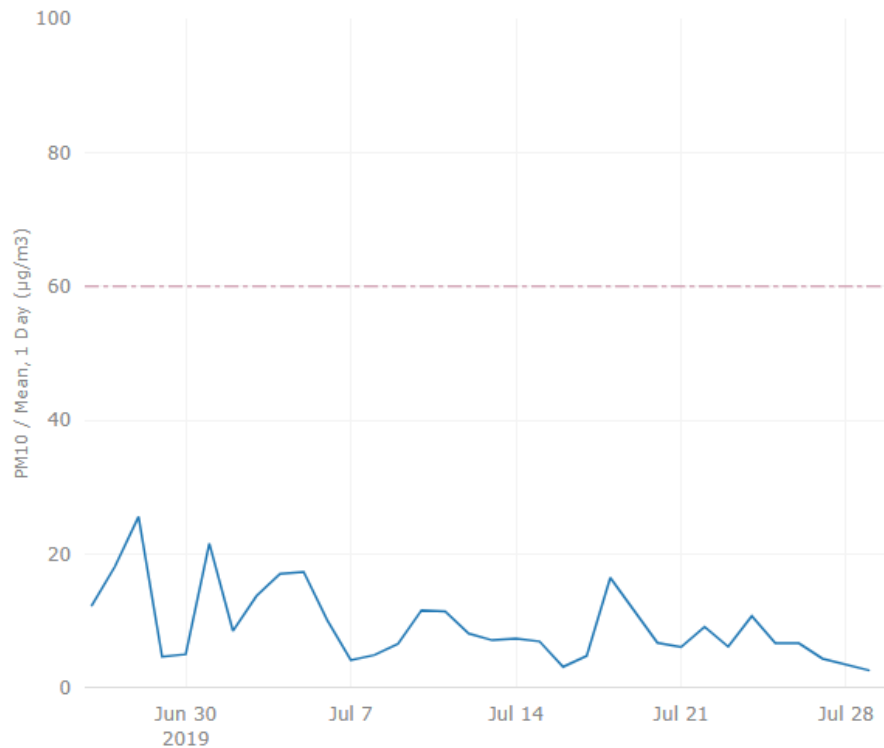
## Buses replacing trains

- Signalling, overhead wiring and cable installation works between Toorak Road and Hawksburn station. Other rail network upgrades also taking place
- 8.30pm Friday 30 August to last train Sunday 1 September
  - Flinders Street to Caulfield – Frankston, Cranbourne and Pakenham lines
  - Flinders Street to Elsternwick – Sandringham line
- Visit [www.ptv.vic.gov.au](http://www.ptv.vic.gov.au) for more information



# ENVIRONMENTAL MANAGEMENT

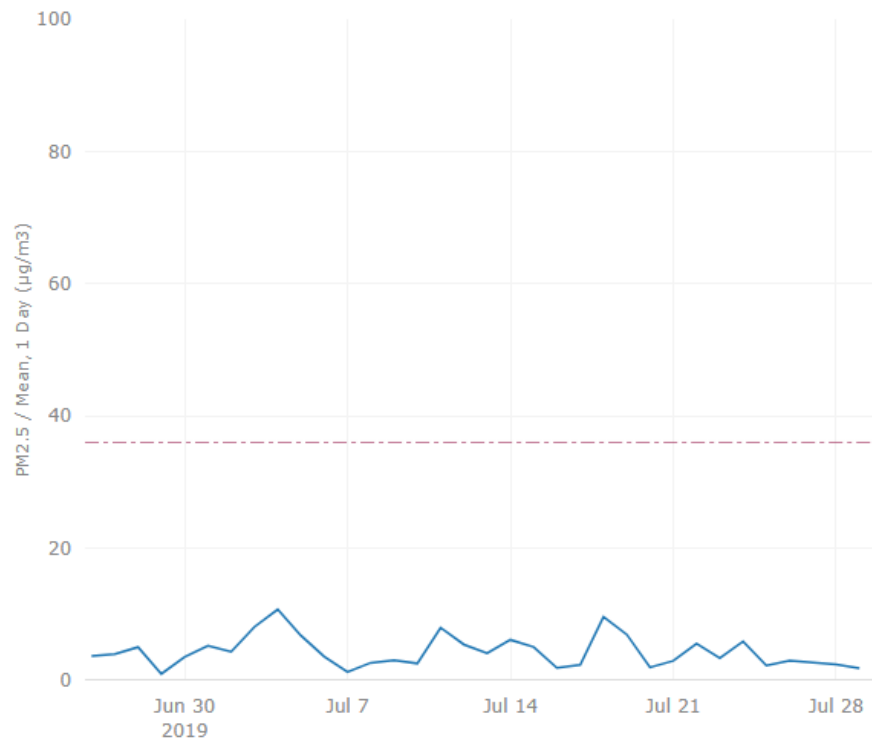
# AIR QUALITY MONITORING



**PM10 – Osborne Street**

**Date range: 25 June – 28 July**

# AIR QUALITY MONITORING



**PM 2.5 – Osborne Street**

**Date range: 25 June – 28 July**

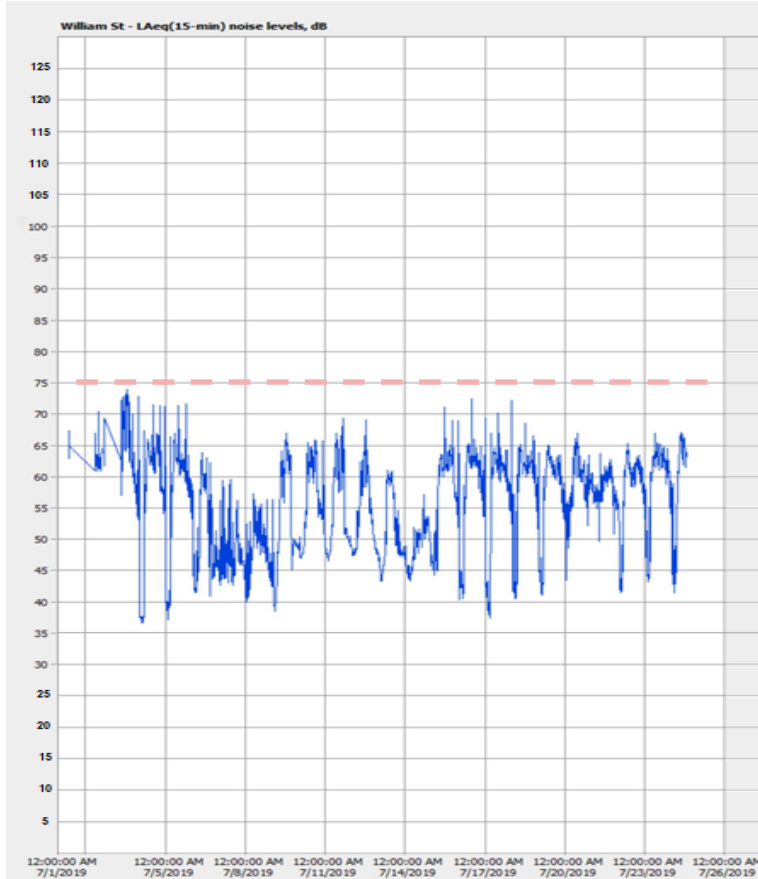
# NOISE MONITORING (ONE WEEK)



**Location:** Arthur Street

**Date range:** 14 – 19 July

# NOISE MONITORING (ONE MONTH)



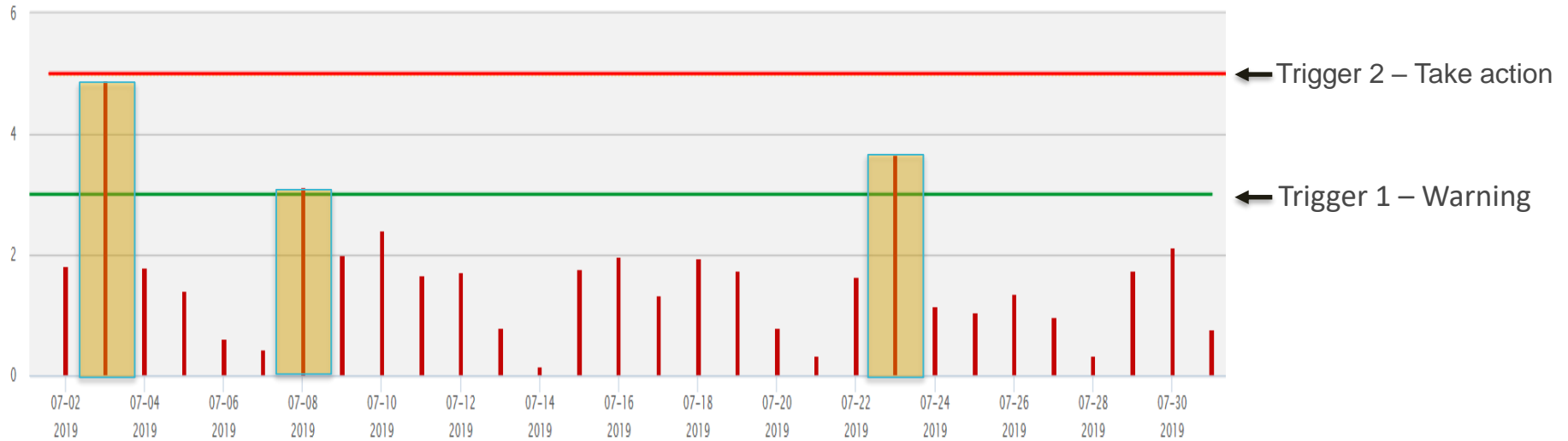
**Location:** William Street

**Date range:** 1 - 25 July

# VIBRATION MONITORING

**Location:** Toorak Road

**Date range:** 1 - 31 July







**QUESTIONS?**



Western Portal

South Kensington

North Melbourne

Parkville

West Melbourne

Melbourne Central

State Library

Parliament

The existing 'North Melbourne' station will be renamed West Melbourne.

Flagstaff

Town Hall

Southern Cross

Flinders Street

Richmond

Anzac

South Yarra

Eastern Portal

Carabourne / Pakenham Line