



## SOUTH YARRA (EASTERN PORTAL) PRECINCT COMMUNITY REFERENCE GROUP

---

29 OCTOBER 2019

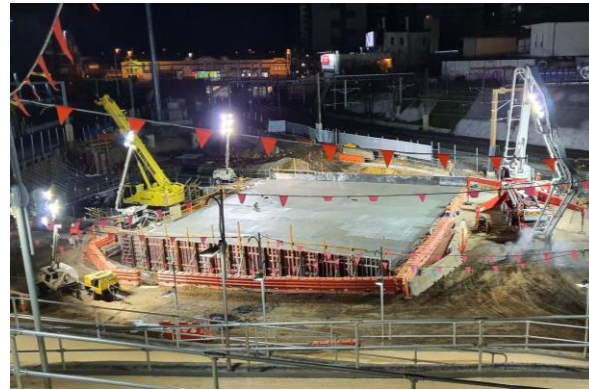
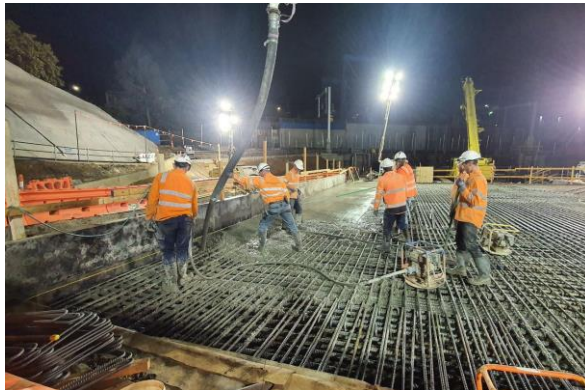
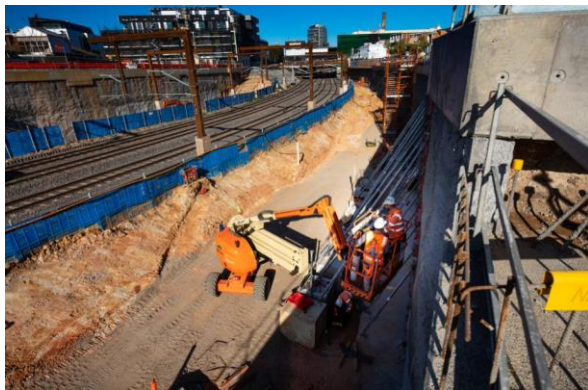
# THE EASTERN PORTAL – OCTOBER 2019



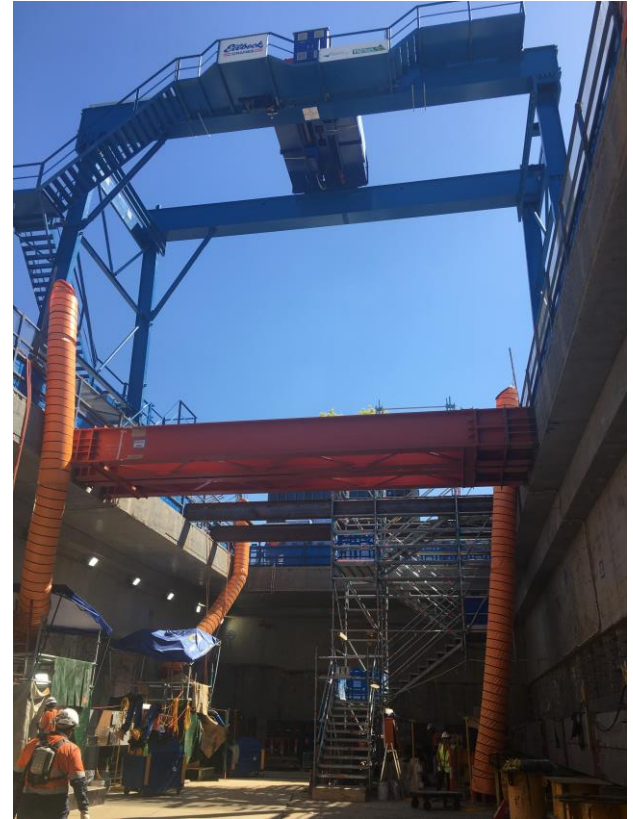


# PROGRAM

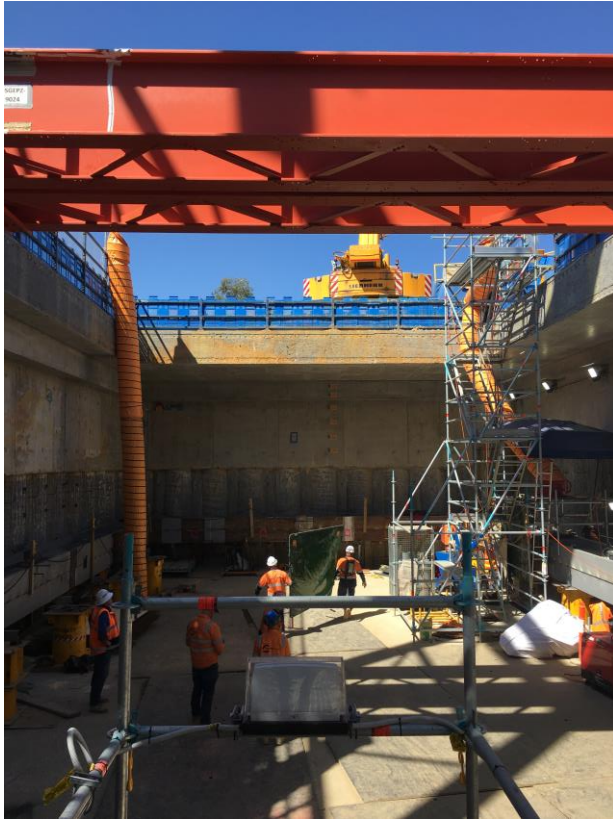
# RIA PROGRESS UPDATE



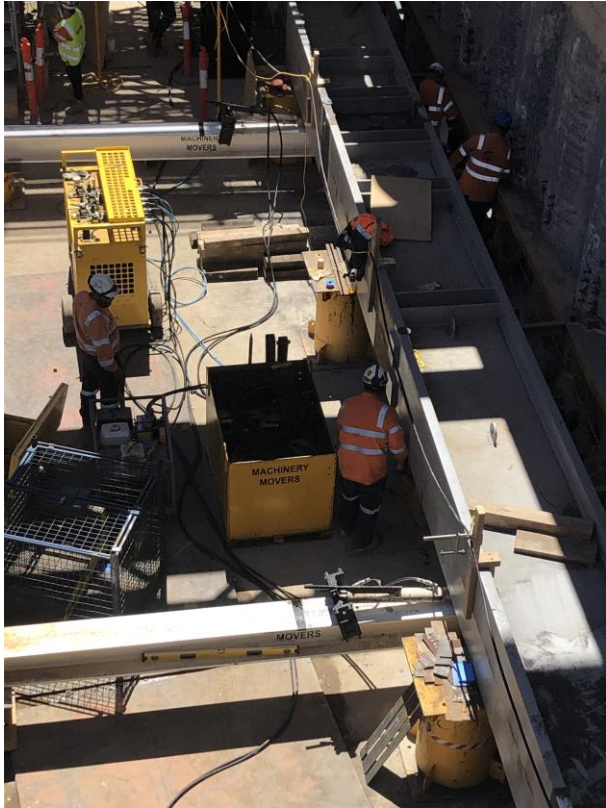
# OSBORNE STREET PROGRESS UPDATE



# OSBORNE STREET PROGRESS UPDATE



# OSBORNE STREET PROGRESS UPDATE

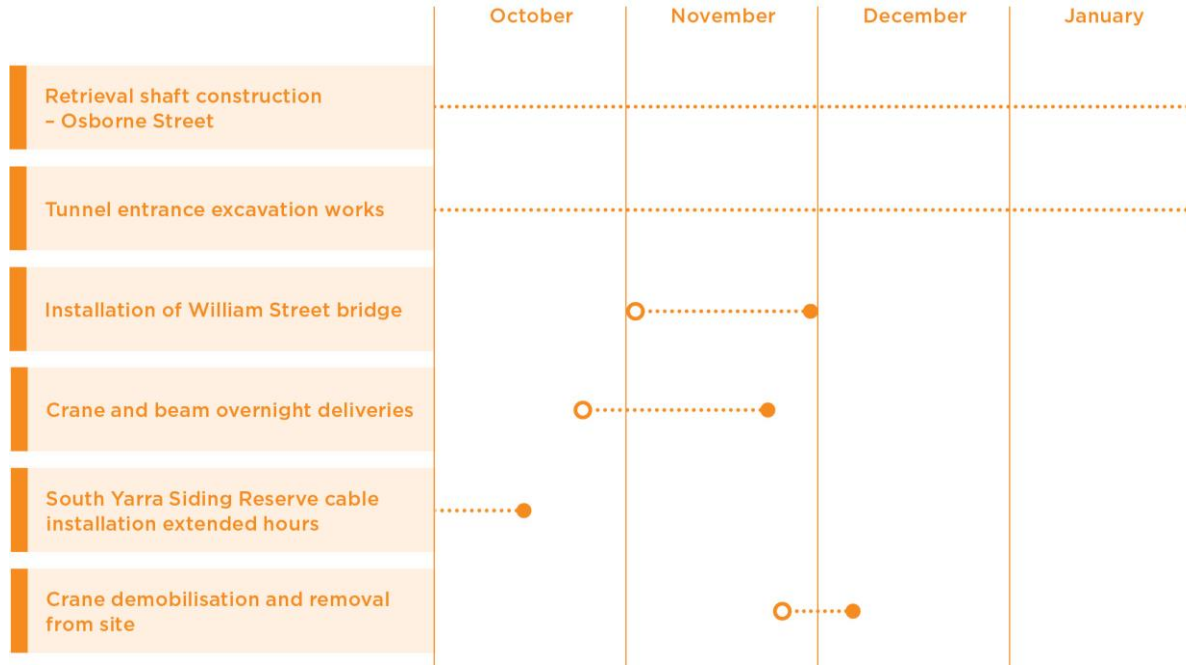


# WORKS UNTIL MIDNIGHT OSBORNE STREET



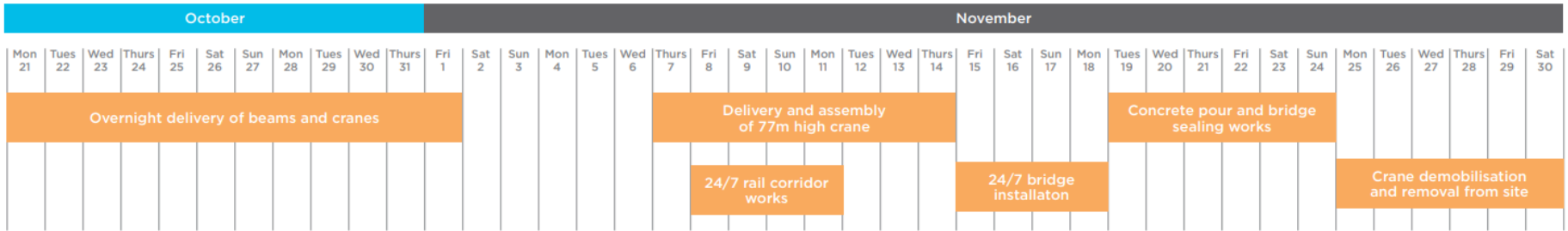


# CONSTRUCTION PROGRAM



# CONSTRUCTION LOOKAHEAD

## Detailed William Street bridge works



# CONSTRUCTION LOOKAHEAD

## Ongoing works - South Yarra Siding Reserve

- Excavation of tunnel entrance (24/7 works)
- Ongoing deliveries of beams for William Street bridge
- Drain installation at Palfreyman Street and Hopetoun Grove

## Upcoming works - South Yarra Siding Reserve

- Delivery and assembly of 750T crane
- Installation of William Street bridge
- Weekend rail occupation - 8 to 11 November and 15 to 18 November
- Tunnel base slab works



Tunnel excavation works under the roof slab



# COMMUNITY & COMMUNICATIONS UPDATE

# COMMUNICATIONS

## Recent and upcoming communications

- October construction update distributed to approx. 1,500 residents and businesses on 2 October and via email
- Dedicated William Street bridge notification was distributed 16 October outlining preparation and bridge installation works throughout October and November, as well as advertising the community info session
- To avoid duplication of information the next monthly update will be a combined mid-November and December works notification



# COMMUNITY ENGAGEMENT

## William Street Bridge community information session

On Saturday 26 October a William Street Bridge community information session was held at SOS Café on Toorak Rd.

RIA team members had approximately 10 conversations with members of the community over three hours, with common themes including:

- Interest in the design and look of the new bridge and any traffic calming measures
- Questions regarding the bridge installation process
- Interest and questions regarding the new Siding Reserve
- Questions about the reinstatement of Lovers Walk and connectivity within the precinct



# TRAFFIC AND TRANSPORT

# TRAFFIC CHANGES

## Palfreyman Street and Hopetoun Grove

- Parking removal and temporary closures while drainage is installed in the rail corridor

## Rail access locations (Nov/Dec)

- There will be a number of rail access points utilised over the coming months. Many of these have already been used by the project, however new sites next to the corridor will be required
- Impacted residents and businesses will be notified of any temporary parking removal or access changes

## Osborne Street

- Increase in truck movements from mid-to-late November
- Overnight delivery mid-November

## New laydown area - 402 Chapel Street

- An additional temporary laydown area has been acquired for upcoming rail works
- The area will be used for stockpiling ballast and other essential equipment
- To enter the site trucks will travel along Commercial Road and enter via Bray Street







# TRANSPORT CHANGES

## **Weekend rail occupation 8 – 11 November**

- No impact to passenger services
- No replacement buses

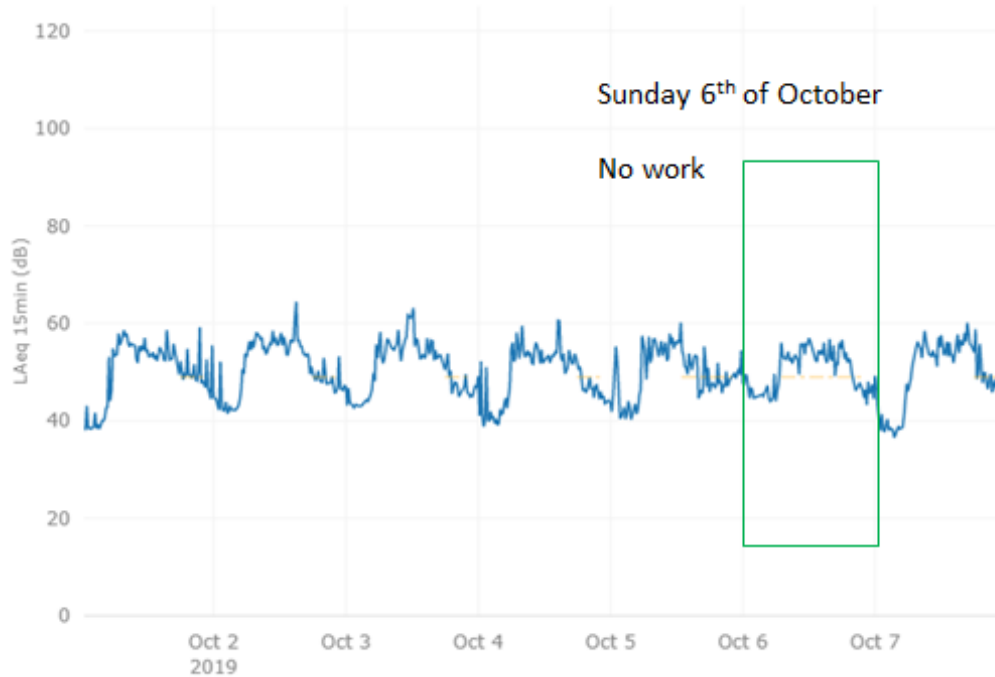
## **Weekend rail occupation 15 – 18 November**

- Buses will be replacing trains on the Frankston, Cranbourne and Pakenham lines over this weekend
- Buses will be replacing trains on the Sandringham line on Sunday 17 November only
- Visit [www.ptv.vic.gov.au](http://www.ptv.vic.gov.au) for more information



# ENVIRONMENTAL MANAGEMENT

# CYP NOISE MONITORING



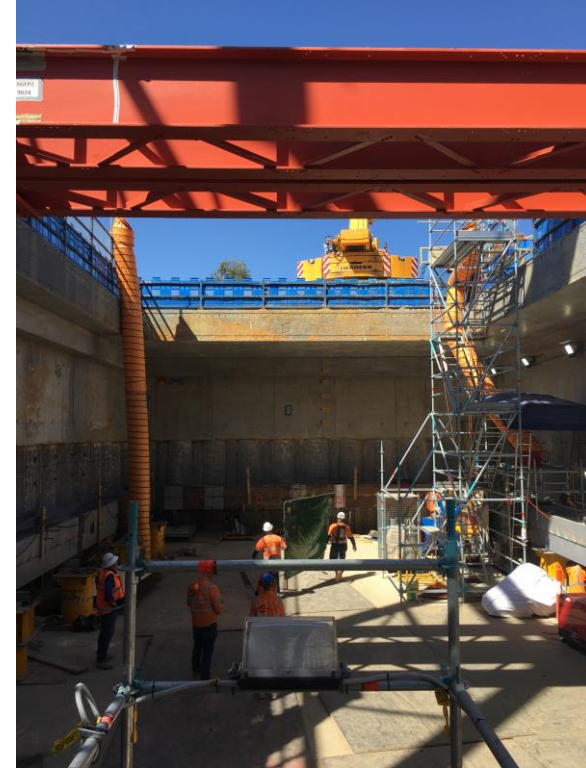
Average Week

Location: Arthur Street

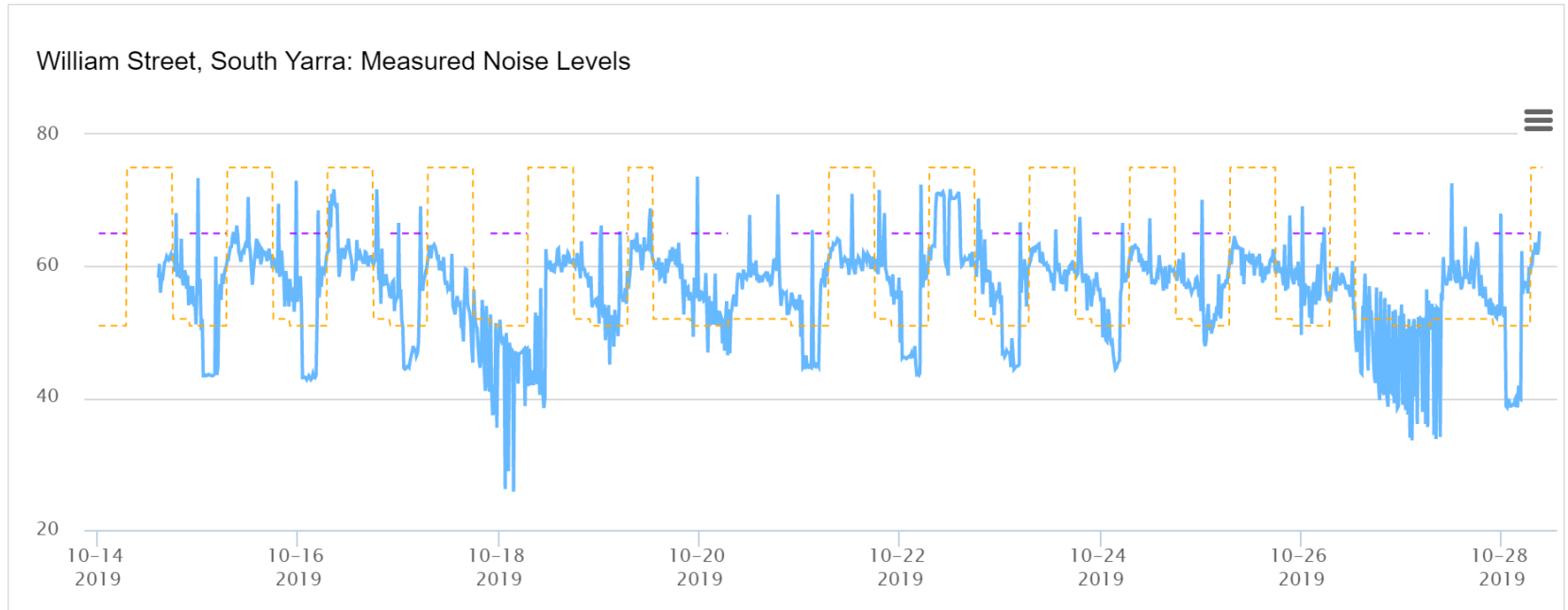
Date Range: September 29 to October 5

# CYP ROOF SLAB NOISE REDUCTION

	LAeq	LAmx	LA90
Inside the Box	80.6	86.5	75.8
Outside the Box	64.1	79.6 (local ute)	60.6
Noise Reduction	16.5	6.9+	15.2



# RIA NOISE MONITORING



# CYP AIR QUALITY MONITORING

## DEVICE DATA



PM10 – Osborne Street  
Date Range: September 11 to  
October 9

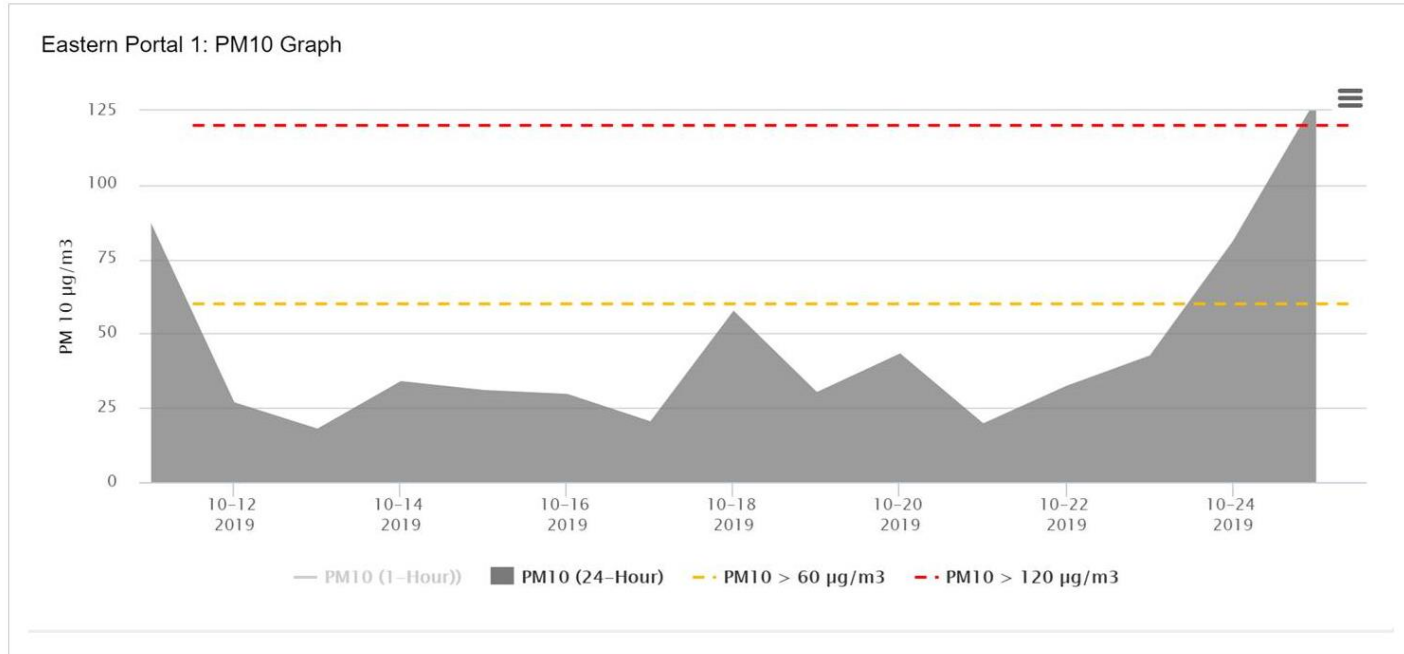
# CYP AIR QUALITY MONITORING

## DEVICE DATA



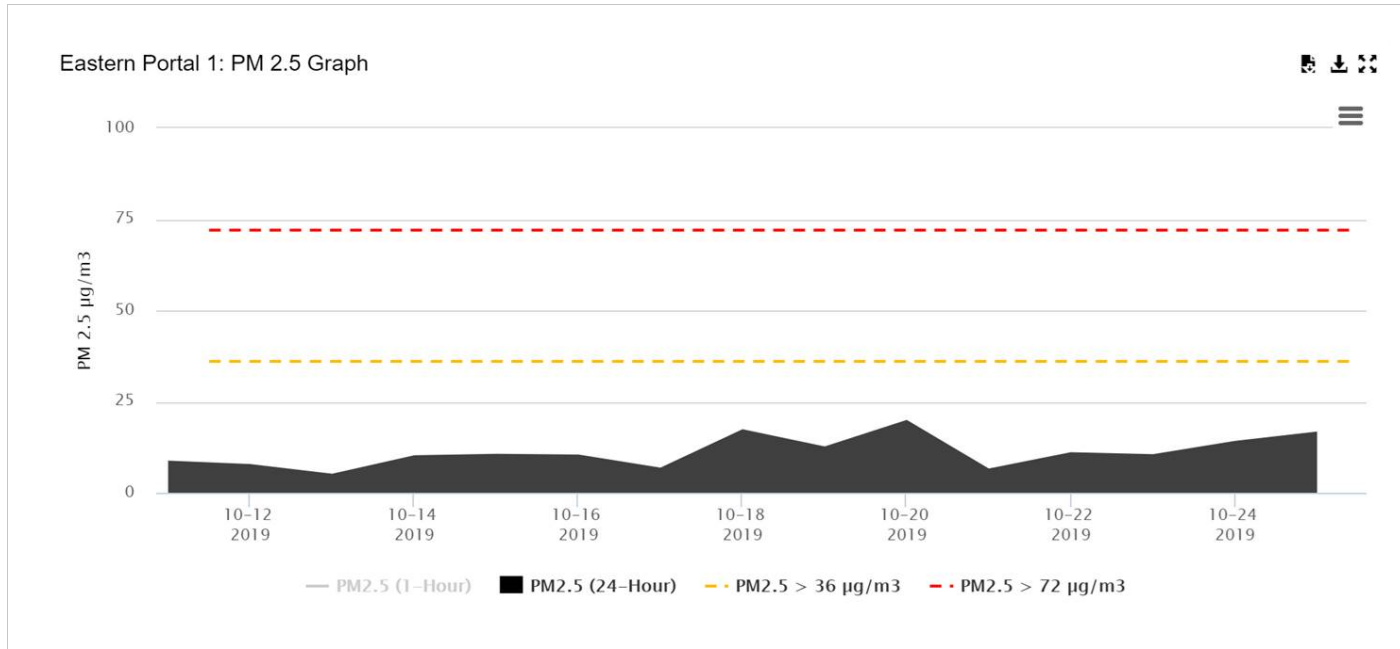
PM2.5 – Osborne Street  
Date Range: September 11 to  
October 9

# RIA AIR QUALITY

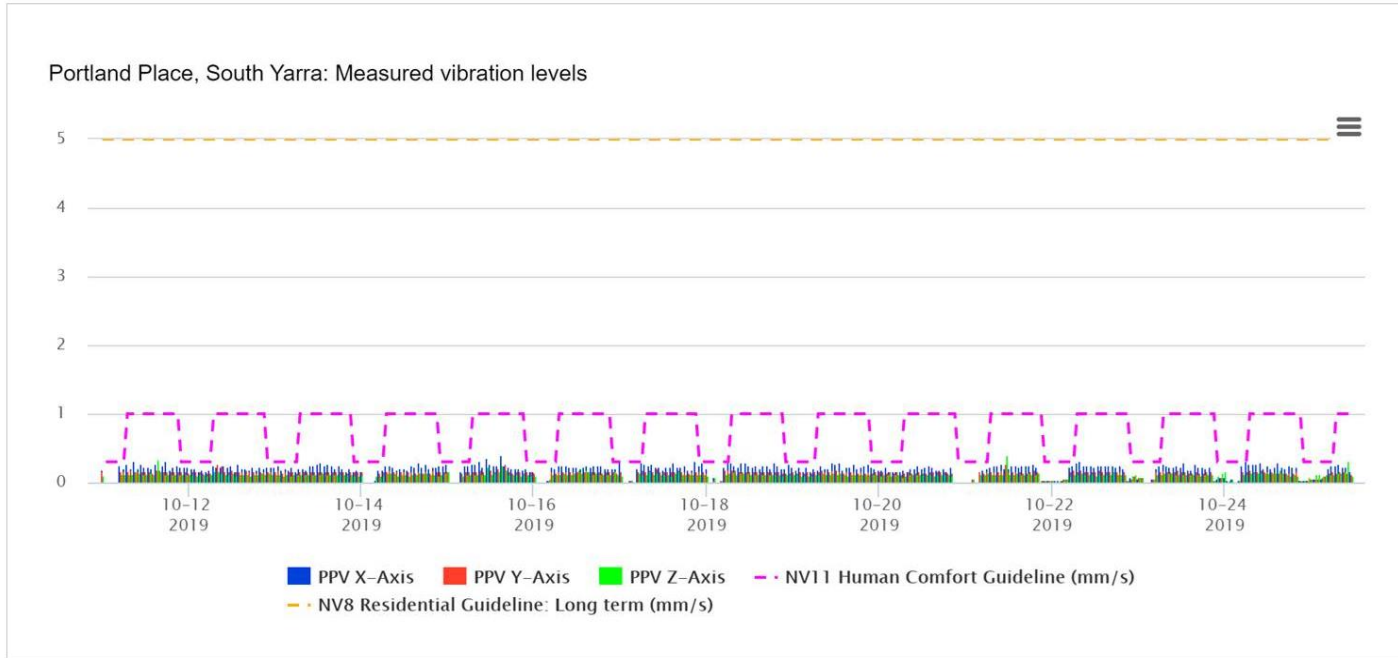




# RIA AIR QUALITY



# RIA VIBRATION MONITORING



# SCOPE AND DESIGN PROCESS WILLIAM AND OSBORNE STREET BRIDGES



# RAIL PROJECTS VICTORIA SCOPING PROCESS

## **Strategic requirements (pre-2015)**

- Population growth and housing
- Industry and employment
- Future transport demand

## **Site investigations and concept design (2016-2017)**

- Environmental Effects Statement (EES)
- Urban Design Strategy

## **Environmental and planning approvals (2018-2019)**

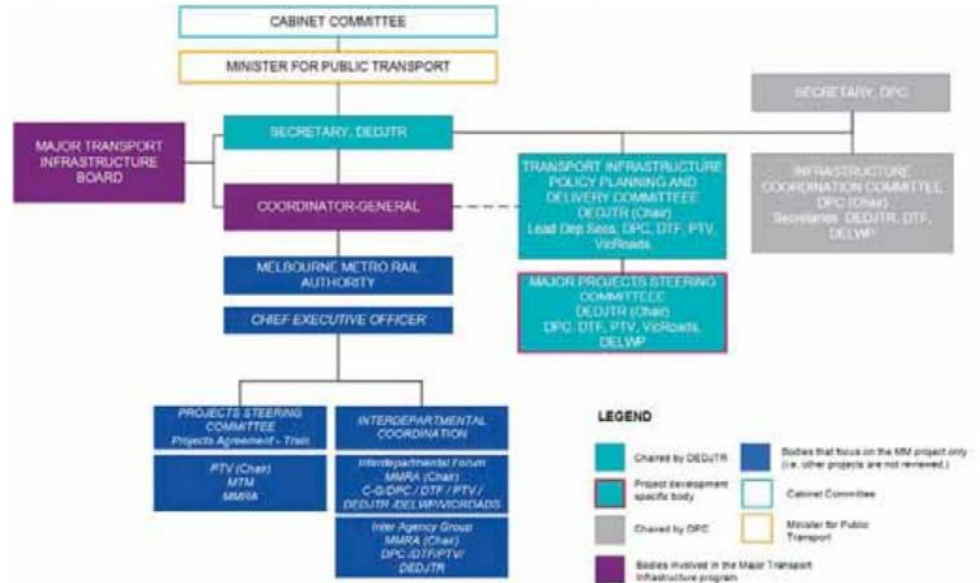
- Early Works Development Plan
- Development Plan

# GOVERNANCE STRUCTURE

## Business Case

- Major Transport Committee Established and chaired by the Lead Deputy Secretary, which is the key forum for project decisions.
- Major Project Steering Committee (MSPC) consisting of representatives from Department portfolio agencies including PTV, VicRoads, Department of Premier and Cabinet and Department of Treasury and Finance
- Government then approves the Business Case

Figure 18-3 – Governance Structure – Project Development



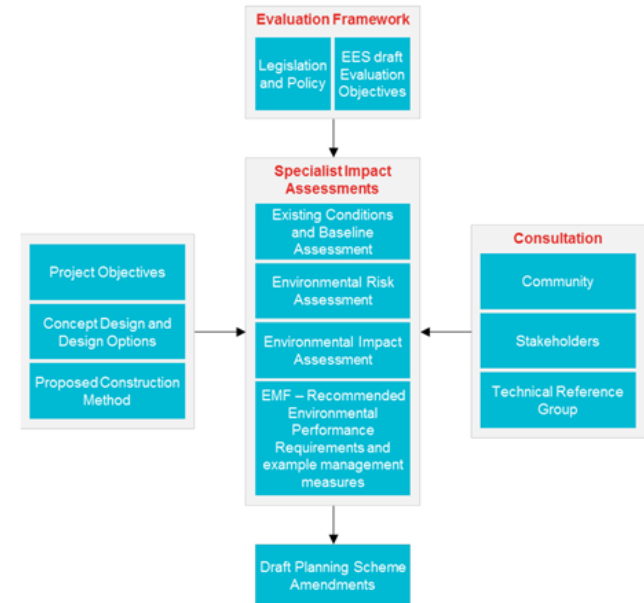
# ENVIRONMENTAL EFFECTS STATEMENT (EES)

The Metro Tunnel Project EES was developed with inputs from multiple stakeholders.

The EES is developed to outline some of the following:

- A description of the proposed works
- An outline of the public and stakeholder consultation undertaken and the issues raised

The EES is assessed by the Minister for Planning before finalisation of the document



# EES STAKEHOLDER ENGAGEMENT

## The Technical Reference Group advised on:

- Applicable policies, strategies and statutory provisions
- Scoping requirements for the EES

Stakeholders within the community were able to provide comment for the EES by:

- Online engagement portal
- Community drop-in sessions
- Information stands
- Pop-up sessions

Stakeholder	Engagement	
Office of the Victorian Government Architect	Urban Design Reference Group (UDRG)	
Public Transport Victoria		
Department of Economic Development, Jobs, Transport and Resources		
City of Melbourne		
City of Port Phillip		
City of Stonnington		Technical Reference Group (TRG)
DELWP		
EPA Victoria		
Heritage Victoria		
Melbourne Water		
Office of Aboriginal Affairs Victoria		
VicRoads		
Community	Online engagement portal, Community drop-in sessions, Information stands and pop-up sessions	
South Yarra Traders Association		
Chapel Street Traders Association		

# DESIGN OUTCOMES

## Metro Tunnel Environmental Effect Statement

- Construction of a vehicular access bridge from Osborne Street for construction vehicles, to be converted to a pedestrian bridge post-construction<sup>1</sup>
- Removal, reinstatement and upgrading of William Street bridge, South Yarra Siding Reserve, Osborne Street Reserves and Lovers Walk<sup>1</sup>
- The requirement to retain the existing alignment and functionality of William Street bridge<sup>2</sup>



# WHY THE BRIDGES ARE INCLUDED IN SCOPE

- Engagement with the Office of the Victorian Government Architect
- City of Stonnington are supportive of the bridges and they fit in with their urban design strategy
- Majority of the community were in favour of the bridges
- The bridges provide multiple access points for pedestrian and cyclists across the rail corridors and through South Yarra Siding Reserve
- To connect Chapel Street and South Yarra Station, via the new Southern Promenade and via the upgraded South Yarra Sidings Reserve



# COMMUNITY CONSULTATION

## **Feedback received regarding William Street and Osborne Street bridges**

The draft RIA Eastern Portal Development Plan was on public display from Monday 4 February 2019 to Friday 22 February 2019.

The project team implemented a combination of written, online and face-to-face communications to engage with community members and to encourage feedback and submissions.

A total of 53 submissions from individuals were received via an online survey during the public display period.

Feedback received was considered in the finalisation of the RIA Eastern Portal Development Plan.

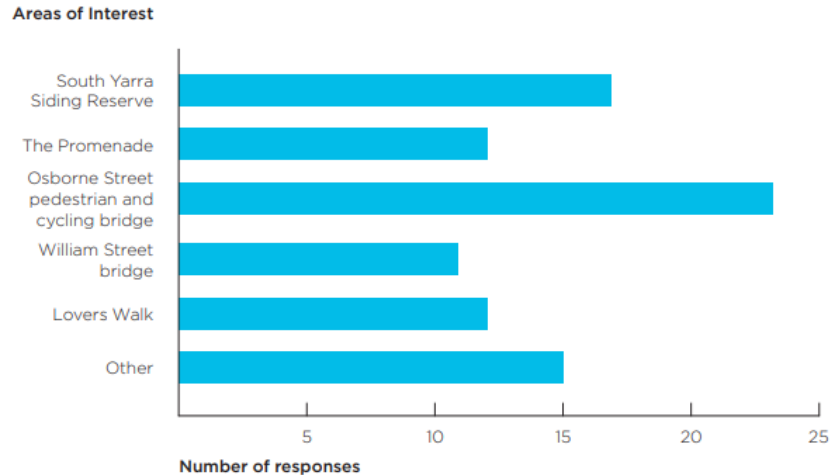
An updated plan was submitted to the Minister for Planning for consideration and was approved on 15 May 2019.

# WILLIAM ST AND OSBORNE STREET BRIDGES

## Feedback received regarding William Street and Osborne Street bridges

The Osborne Street bridge attracted most interest followed by South Yarra Siding Reserve, the Promenade, Lovers Walk and William Street bridge.

The below graph summaries the key areas of interest and the table on the following slide identifies the common themes and RIA's response to these.



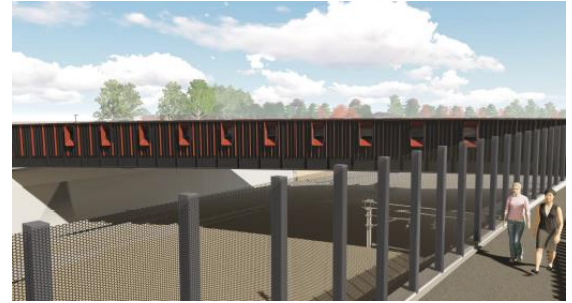
# WILLIAM STREET BRIDGE

Feedback focused on support for widened pedestrian pavement and for graffiti deterrent design and visual permeability.

Following this feedback, portholes were added to the bridge to break up the solid steel structure, the footpath was significantly widened and anti-graffiti finishes will be used.

Traffic calming measures will be implemented to ensure through traffic is carefully managed.

Pedestrian links between William Street, Lovers Walk and the southern promenade have also been improved.



# OSBORNE STREET BRIDGE

Feedback focused on concerns raised in relation to inclusion of the new bridge, with suggestions to upgrade the existing Arthur Street bridge instead. Concerns were also raised about loss of landscape amenity due to ramp.

The new bridge needs to be DDA compliant (ramp) to provide an accessible option.

Upgrading the Arthur Street bridge would not achieve the aim of increasing connectivity and providing access to Siding Reserve.

The design of the Osborne Street bridge seeks to minimise impacts to landscaping in Osborne Street Reserve.

Tress and landscaping will be utilised to minimise the visual impact of the bridge where possible.





**QUESTIONS?**



Western Portal

North Melbourne

Parkville

State Library

Town Hall

Anzac

Eastern Portal

The existing 'North Melbourne' station will be renamed West Melbourne.

South Kensington

West Melbourne

Melbourne Central

Flagstaff

Parliament

Southern Cross

Flinders Street

Richmond

South Yarra

Carabourne / Pakenham Line