



SOUTH YARRA (EASTERN PORTAL) PRECINCT COMMUNITY REFERENCE GROUP

12 FEBRUARY 2019



PROGRAM

PROGRESS UPDATE

Completed activities

- Bored piling in the upper section of TBM retrieval shaft (Osborne Street)
- Installation of retaining wall (southern boundary of rail corridor)
- Rerouting of cabling route (William Street & South Yarra Siding Reserve)
- Carpark demolition (Arthur Street)



View towards Chapel Street from William Street Bridge



PROGRESS UPDATE

Ongoing activities

- TBM retrieval shaft (Osborne Street)
 - Temporary retaining structure (adjacent underground 66kV)
 - Excavation to the lower level
- General construction activity in preparation for rail corridor works
- Containment, safety fencing and hoarding installation
- Piling in Arthur Street and in South Yarra Siding Reserve

CONSTRUCTION LOOKAHEAD

What's coming up

- Osborne Street TBM retrieval shaft works
 - Excavation and retaining wall construction – now to March 2019
 - Lower tier CFA piling – March 2019 to April 2019
 - Piling to May 2019
- Piling and breaking back piles in the rail corridor (access from Arthur Street) and in South Yarra Siding Reserve – from now to March 2019
- Upgrade of intersection of Arthur and Chapel street – late February (TBC)
- Signalling and overhead wiring upgrades and installation (during rail shutdown)
- Tree removal and service investigation in rail corridor (during rail shutdown)

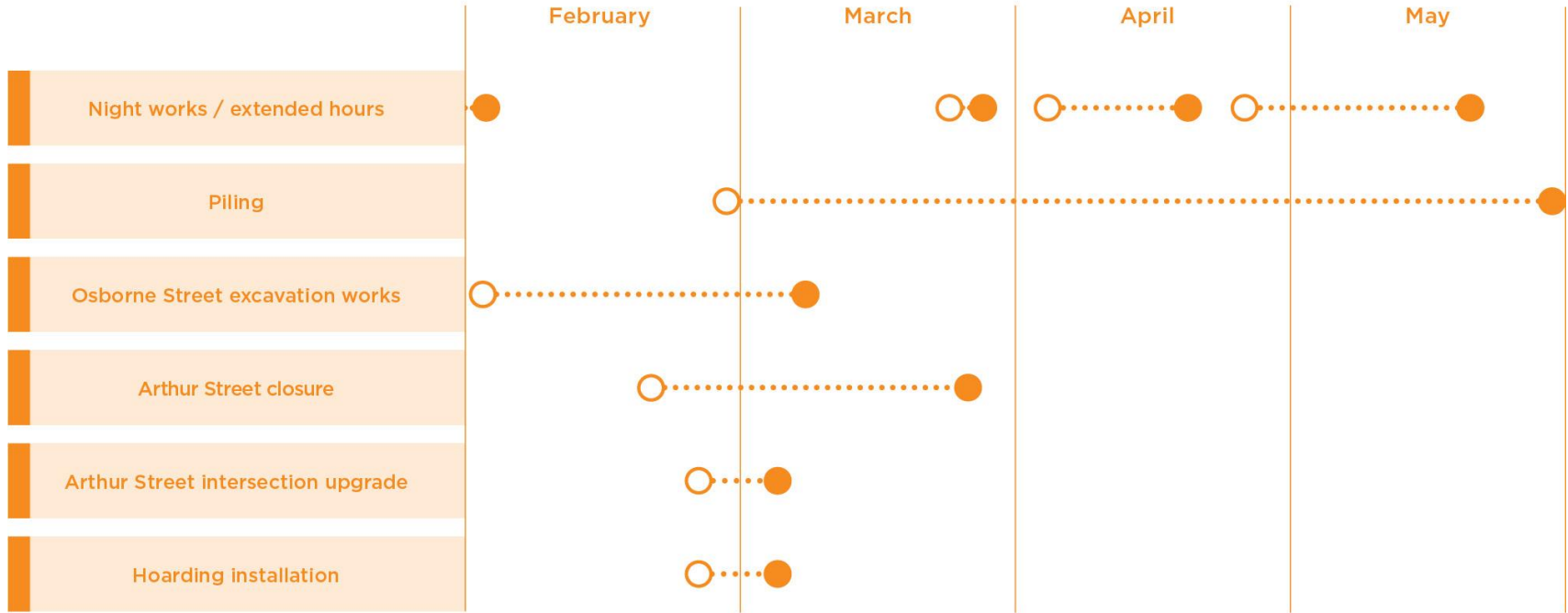


CONSTRUCTION LOOKAHEAD

24/7 works under rail shutdown

- Friday, 22 March to Monday 25 March (TBC)
 - track, signal and overhead wiring works
- April/ May (TBC)

CONSTRUCTION PROGRAM





TREE REMOVAL

- Majority of trees have now been removed
- Remnant vegetation in the rail corridor east of Chapel Street (Cranbourne / Pakenham & Frankston lines) and south of Toorak Road (Sandringham line) will be removed during rail shutdowns



PROPERTY CONDITION SURVEYS

CYP

- completed for all those who have responded
- follow up invitations have been sent to those yet to respond

RIA has sent an invitation to around 375 property owners east of the Sandringham rail line

- 207 have accepted – reminders sent to remainder
- 188 inspections completed to date

TRAFFIC AND TRANSPORT



TRAFFIC MANAGEMENT

- Monitoring compliance with parking, truck routes and other requirements
- Arthur Street intersection upgrade – late February (TBC)
- Short-term traffic management implemented as needed
 - current Arthur Street closure to through traffic – to 4 March
 - traffic control around minor works in road as needed



TRANSPORT CHANGES

- Rail shutdown of all six lines
 - Friday 22 March to Monday 25 March
 - buses replace trains between Flinders Street and Caulfield / Elsternwick
- Rail shutdown of Frankston and Cranbourne / Pakenham lines
 - April (TBC)
 - buses to replace trains between Flinders Street and Caulfield
- Rail shutdown of Sandringham line
 - April/ May(TBC)
 - buses to replace trains between Flinders Street and Caulfield



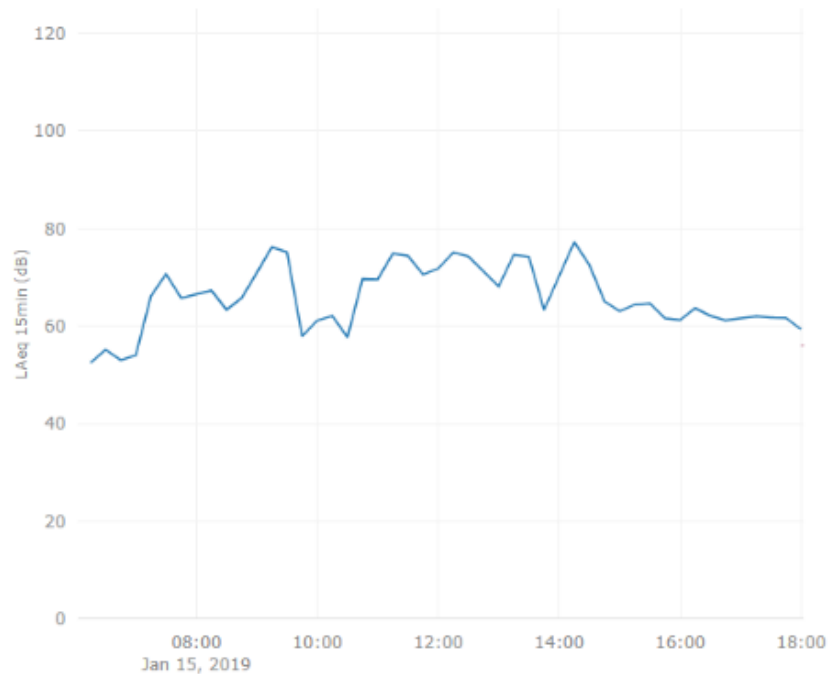
ENVIRONMENTAL MANAGEMENT

MODELLING & MITIGATION STRATEGIES

- Noise currently being modelled for April and May rail shutdowns
- Proactive relocation and respite offers as per *Residential Impact Mitigation Guidelines*
- Noise mats on generators and other equipment
- Noisy works scheduled during the day wherever possible
- All machines and trucks fitted with broadband reversing alarms (squawkers)
- Water cart for dust suppression
- Street sweeper for dust removal

NOISE MONITORING OSBORNE STREET

DEVICE DATA



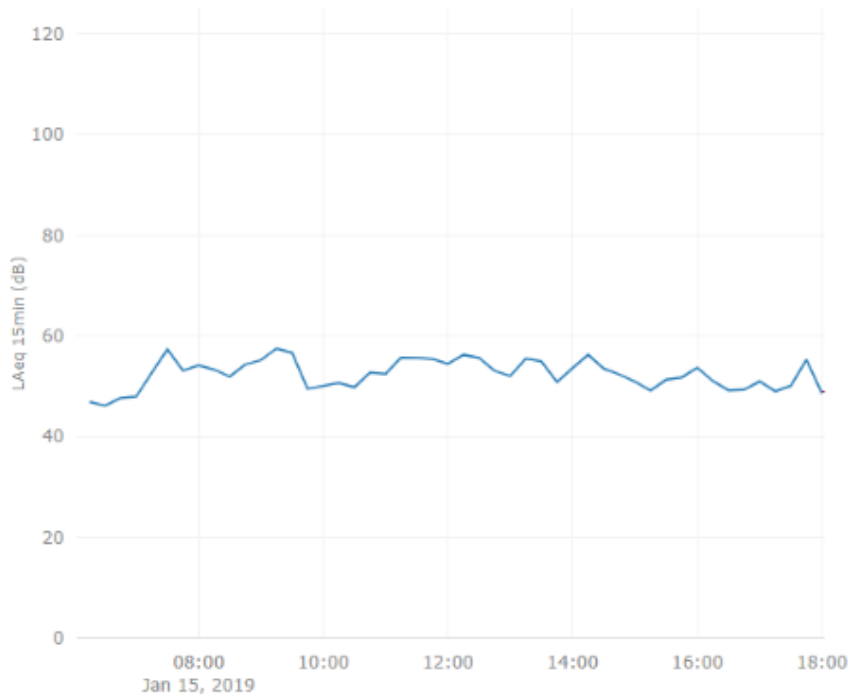
Activity: Bored Piling

Example date: January 15th

Peaked at 77dB

NOISE MONITORING ARTHUR STREET

DEVICE DATA



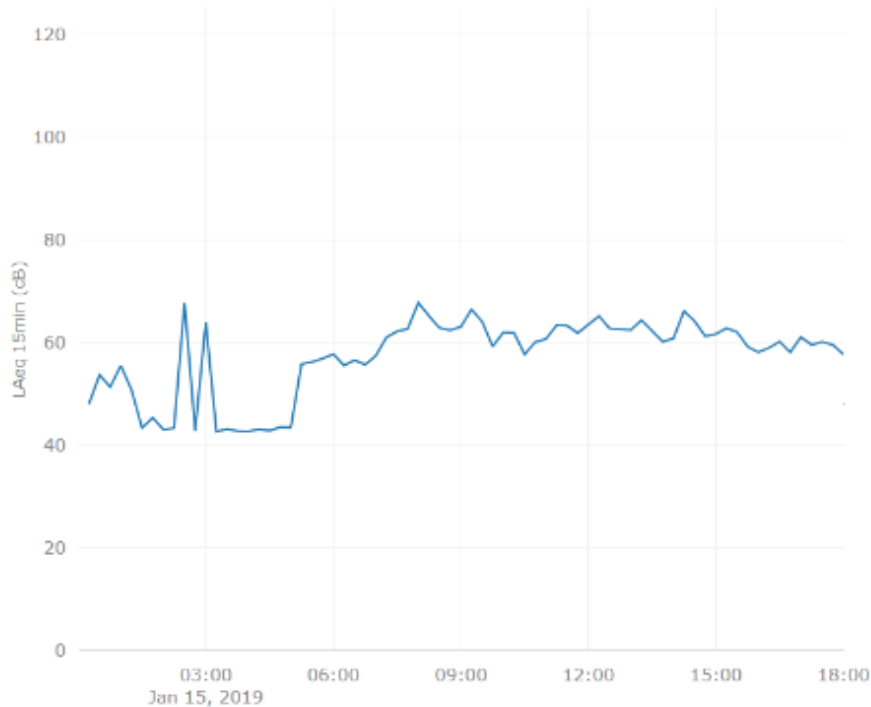
Activity: Bored Piling

Example date: January 15th

Peaked at 57dB

NOISE MONITORING WILLIAM STREET

DEVICE DATA



Activity: Bored Piling

Example date: January 15th

Peaked at 66dB



DESIGN DEVELOPMENT

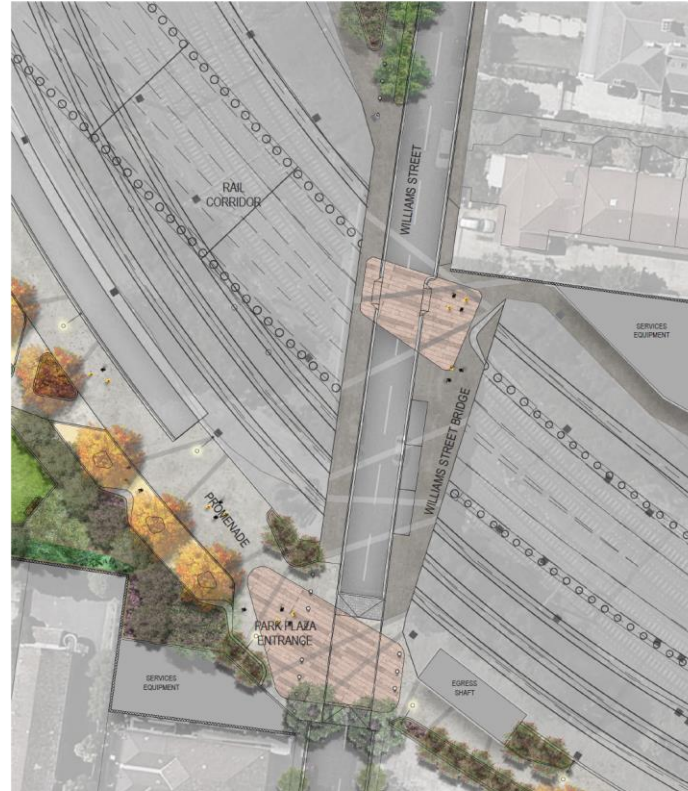
DRAFT DEVELOPMENT PLAN – FUNCTIONAL LAYOUT



DESIGN ELEMENTS



Flexible open spaces with picnic area



Open park entrance and Williams Street Bridge

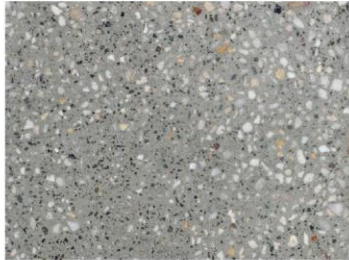
VIEW TO BRIDGE



URBAN DESIGN ELEMENTS/ PALETTE



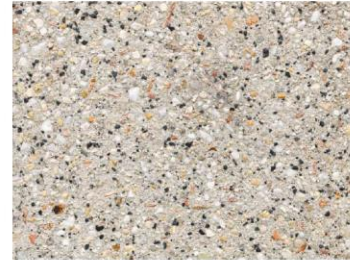
Feature stone paving to nodes



Exposed aggregate concrete to promenade



Granite cobblestones banding to Promenade



Secondary exposed concrete footpath



Granitic gravel footpath



Asphalt footpath



Sawn bluestone pitches and wide concrete edging



Shotcrete batters to rail corridor



Garden beds



Lawn areas



Accessible drinking fountain with dog bowl



City of Stonnington standard bench seat

Indicative only

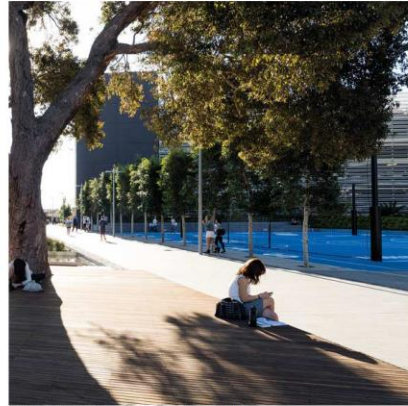
URBAN DESIGN ELEMENTS/ PALETTE



Flexible open lawn areas



Multistorey feature gardens



Wide promenade with avenue tree planting



Integrated walls with seating and garden beds



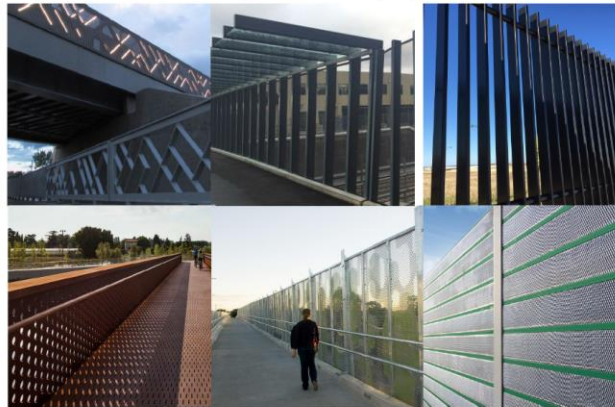
Community picnic facilities



Plaza entrance space



Integrated feature pavement



Anti-throw screens, fencing and noise walls

URBAN DESIGN LANDSCAPING PALETTE



Fraxinus pennsylvanica 'Cimmaron' Cimmaron (Promenade Tree)



Angophora costata



Geijera parviflora



Tristanopsis laurina 'Luscious'



Pyrus calleryana 'chanticleer'



Agonis flexuosa 'Burgundy'



Lagerstroemia indica x *L. fauriei* 'Natchez'



Lagerstroemia indica x *L. fauriei* 'Tuscarora'



Eucalyptus caesia 'Silver Princess'



Eucalyptus leucoxydon 'Euky Dwarf'



Corymbia citriodora 'Scentuous'



Eucalyptus pauciflora 'Little Snowman'



DEVELOPMENT PLAN - TIMEFRAMES

- Public display **Monday 4 February to 5pm, Friday 22 February**
- Submissions to be made to **metrotunnel.vic.gov.au**
- Collate and respond to public submissions in **March and April**
- Submit for approval to Minister for Planning in **late April**
- Decision expected in **mid-2019**



QUESTIONS?



Western Portal

South Kensington

North Melbourne

Parkville

West Melbourne

Melbourne Central

State Library

Parliament

The existing 'North Melbourne' station will be renamed West Melbourne.

Flagstaff

Town Hall

Southern Cross

Flinders Street

Richmond

Anzac

South Yarra

Eastern Portal

Carabourne / Pakenham Line