



CBD COMMUNITY REFERENCE GROUP

CYP DESIGN AND CONSTRUCTION
9 AUGUST 2019





AUGUST CBD COMMUNITY REFERENCE GROUP

Jodie Barrington, CBD Stakeholder Engagement Manager, CYP D&C

Blythe Chidgey, Town Hall Station Stakeholder Engagement Manager, CYP D&C

Michael Lavender, Town Hall Station Traffic Manager, CYP D&C

Kate Kearns, Business Support & Engagement Lead, CYP D&C

Jol Keeble, Building Construction Manager, CYP D&C

Friday 9 August 2019



Construction partner:



AGENDA

1. Town Hall Station Update
2. Flinders Link
3. State Library Station Update

WASTE VAN – ROYSTON PLACE



TOWN HALL STATION UPDATE





FLINDERS QUARTER

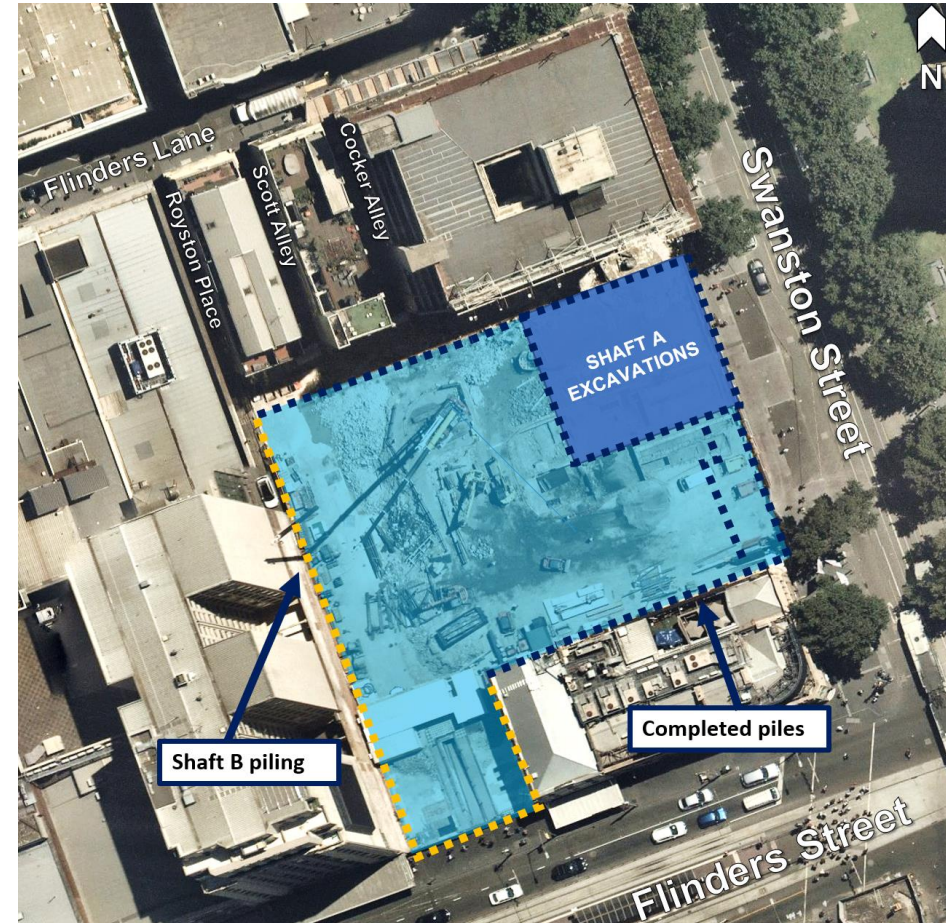
FLINDERS QUARTER WORKS UPDATE

Activity	Location	Aug	Sept	Oct	Nov	Dec	Jan	
Excavation – Shaft A	Internal	—				●		
Piling – Shaft B	Internal	—				●		
Swanston Street Gantry works	External	—●						

FLINDERS QUARTER – PILING UPDATE

Shaft B piling – 180 piles to complete by November 2019

Currently piling in the north west corner of Flinders Quarter



FLINDERS QUARTER – OUT OF HOURS WORKS

Preparatory works (ongoing)

Material delivery and removal, concrete pours

- Monday to Fridays, 6pm – 10pm
- Saturdays, 1pm – 5pm

Pile cage deliveries (ongoing)

- Monday to Saturdays, 5am - 6:30am

Pedestrian and cyclist safety gate installation

- Monday 12 until Friday 16 August, 7pm - 6am

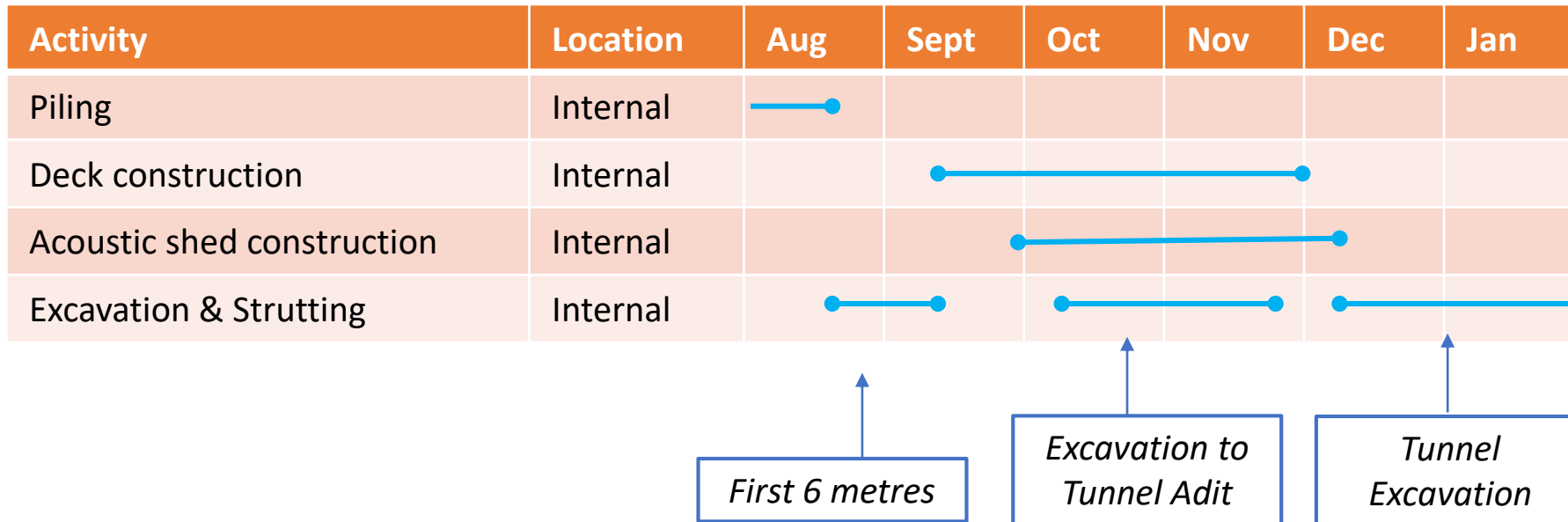
Overhead gantry works

- Sunday to Thursdays, 10pm - 5am until late August



FEDERATION SQUARE

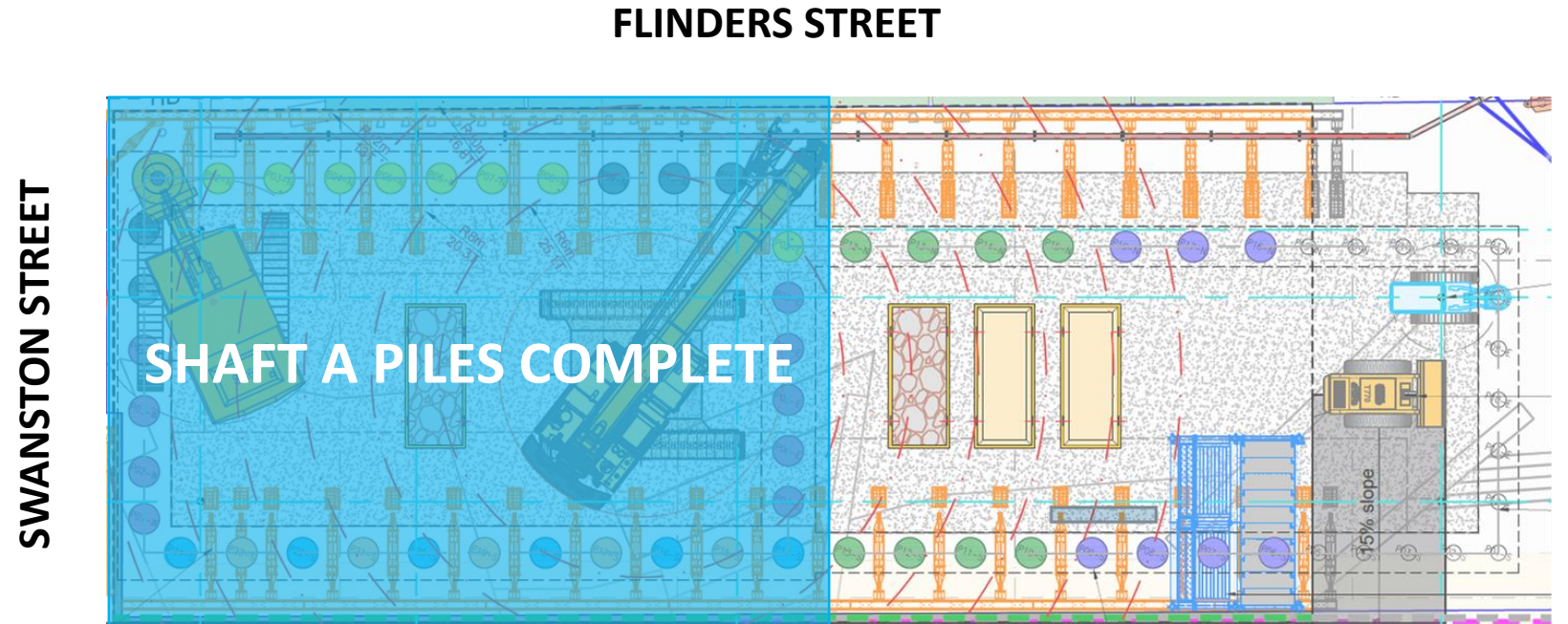
FEDERATION SQUARE WORKS UPDATE



FEDERATION SQUARE – PILING UPDATE

August 2019

- Shaft A piling works complete
- Piling complete by mid August 2019



Piles range from 4 – 30 metres

FEDERATION SQUARE – OUT OF HOURS WORK

Piling works

- 6am- 12am, Monday to Fridays and 6am-6pm, Saturdays

Piling works will end at 10pm and concrete pours will continue until 12am

Pile break back and capping beam works

- 24/5 Monday to Friday and 6am to 6pm Saturdays, until late-August

Excavation

- 24/5 Monday to Friday and 6am to 6pm Saturdays

Piling rig demobilisation

- 10pm -5am, 13 August 2019



CITY SQUARE

CITY SQUARE WORKS UPDATE

Activity	Location	Aug	Sept	Oct	Nov	Dec	Jan	
Deck construction	Internal	—●						
Slab removal	Internal	—●						
Acoustic shed construction	Internal	—●						
Shaft Excavation	Internal	—						
Tunnelling	Internal					—●	—	
Swanston Street driveway	External	—●						

CITY SQUARE – OUT OF HOURS WORKS

Vehicle movements

- Monday to Fridays 6pm-10pm
Deliveries, waste and spoil removal ongoing

Deck construction works

- Monday to Fridays 7am-10pm
- Saturday, 7am-5pm

Mucking out

- Monday to Friday 7am-10pm
- Saturdays 7am-1pm



< heypatyeah ...



443 posts

62.7K followers

167 following

Follow

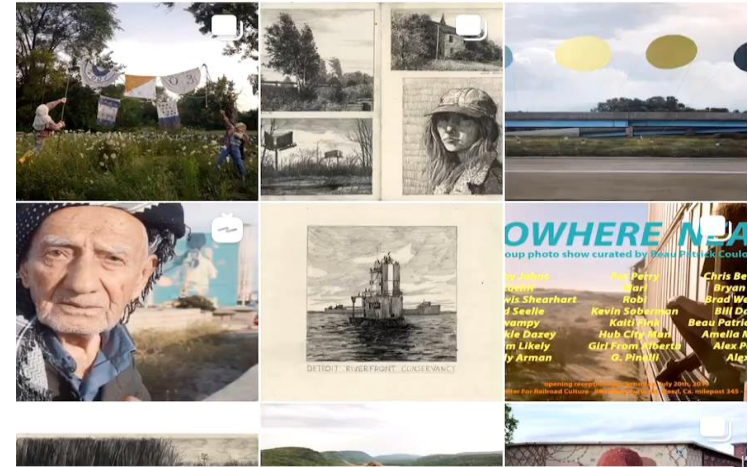
Pat Perry

Artist
Detroit, MI
www.patperry.com



IGTV
1 video

Email



PEDESTRIAN AND CYCLIST SAFETY GATES

- **Swanston Street**, between Flinders Street and Flinders Lane
 - 12-16 August, operational from late August
- **Collins Street**, between Regent Place and Swanston Street
 - Operational from early August

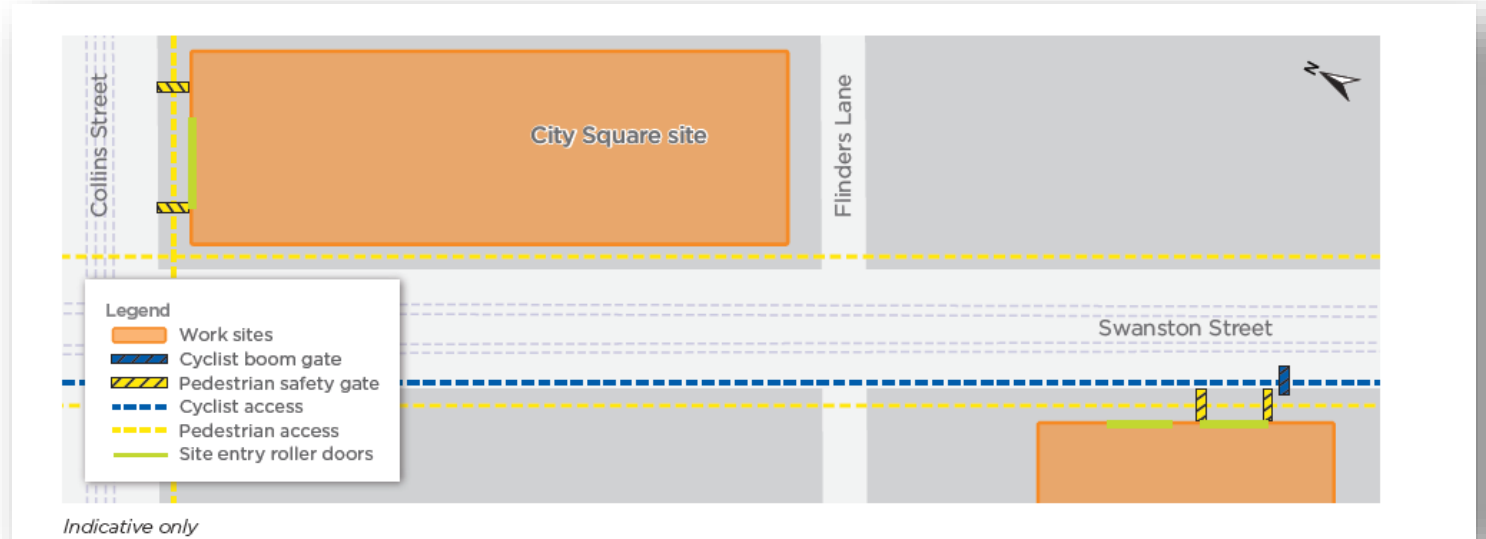
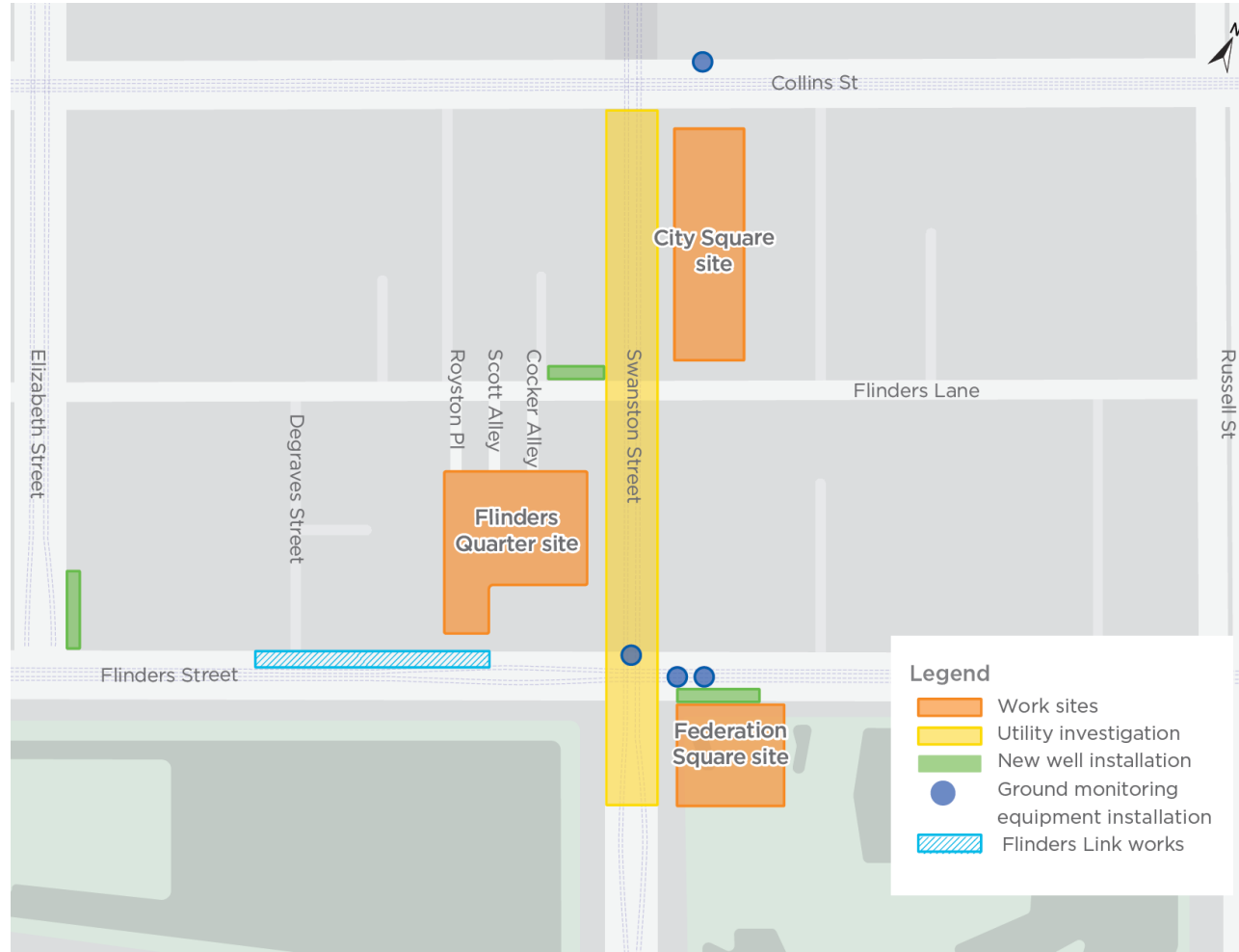


Image of gates installed at Metro Tunnel Site Parkville

GEOTECH UPDATE



FLINDERS LINK



FLINDERS LINK ANIMATION



FLINDERS LINK

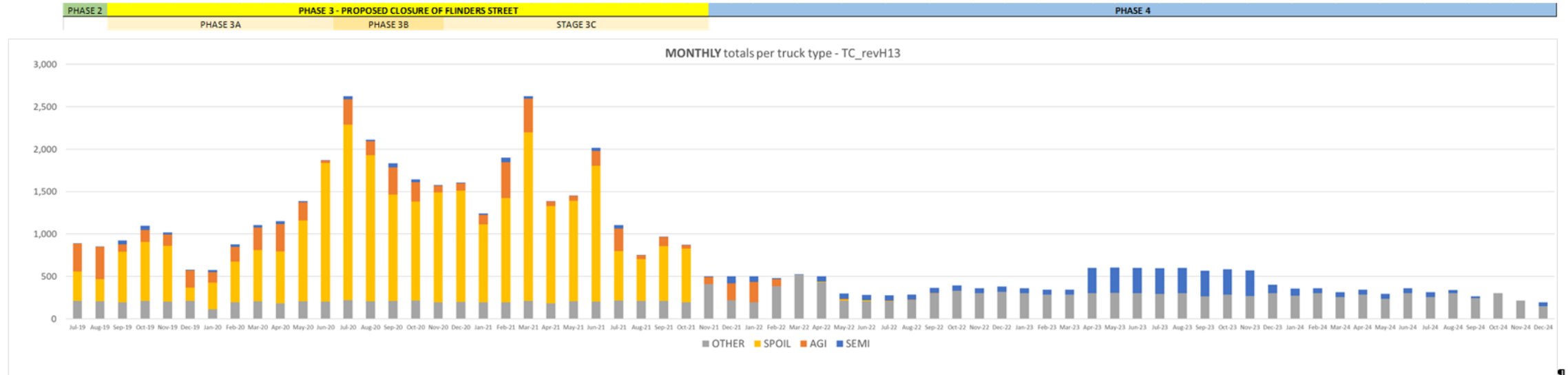


FLINDERS LINK PROGRAM

AUGUST 2019	SEPTEMBER 2019 – NOVEMBER 2020	DECEMBER 2020- NOVEMBER 2021	DECEMBER 2021- DECEMBER 2024
Utility diversions Changes to pedestrian crossing	Footpath Structural works including piling Flinders Street Eastbound lanes closed	Shaft excavations Flinders Street Eastbound lanes closed Footpath reopens	Flinders OSD construction One Flinders Street lane open

PHASE	2019			2020					2021					2022					2023					2024			2025										
	May	Jun	Jul	Aug	Sep	Oct	Nov	Dec	Jan	Feb	Mar	Apr	May	Jun	Jul	Aug	Sep	Oct	Nov	Dec	Jan	Feb	Mar	Apr	May	Jun	Jul	Aug	Sep	Oct	Nov	Dec	Jan	Feb	Mar		
Phase 2 - Piling Adjacent Swanston St Piling within Shaft A&B site	Phase 2																																				
Phase 3 - Flinders St Closure 26 months																																					
Phase 3A - Flinders St - Shaft B																																					
Piling - Shaft B in Flinders St																																					
Excavate, construct lid and reinstate Flinders St paving surface																																					
Construct B1 and GF within site (bottom up)																																					
Phase 3B - Flinders Link Construction (bottom up)																																					
Piling Flinders Link																																					
Excavation Flinders Link																																					
Bottom up construction of Flinders Link																																					
Reinstatement of Flinders St paving surface																																					
Phase 3C - Excavation - Shaft B (Top Down)																																					
Excavation of FOSS Shaft A&B																																					
Construction of FOSS Shaft A&B																																					
Phase 4 - Flinders St - Partial Closure																																					
Construction of FOSS Shaft A&B																																					
Construction of FOSS (LL Building)																																					

TRAFFIC VOLUME



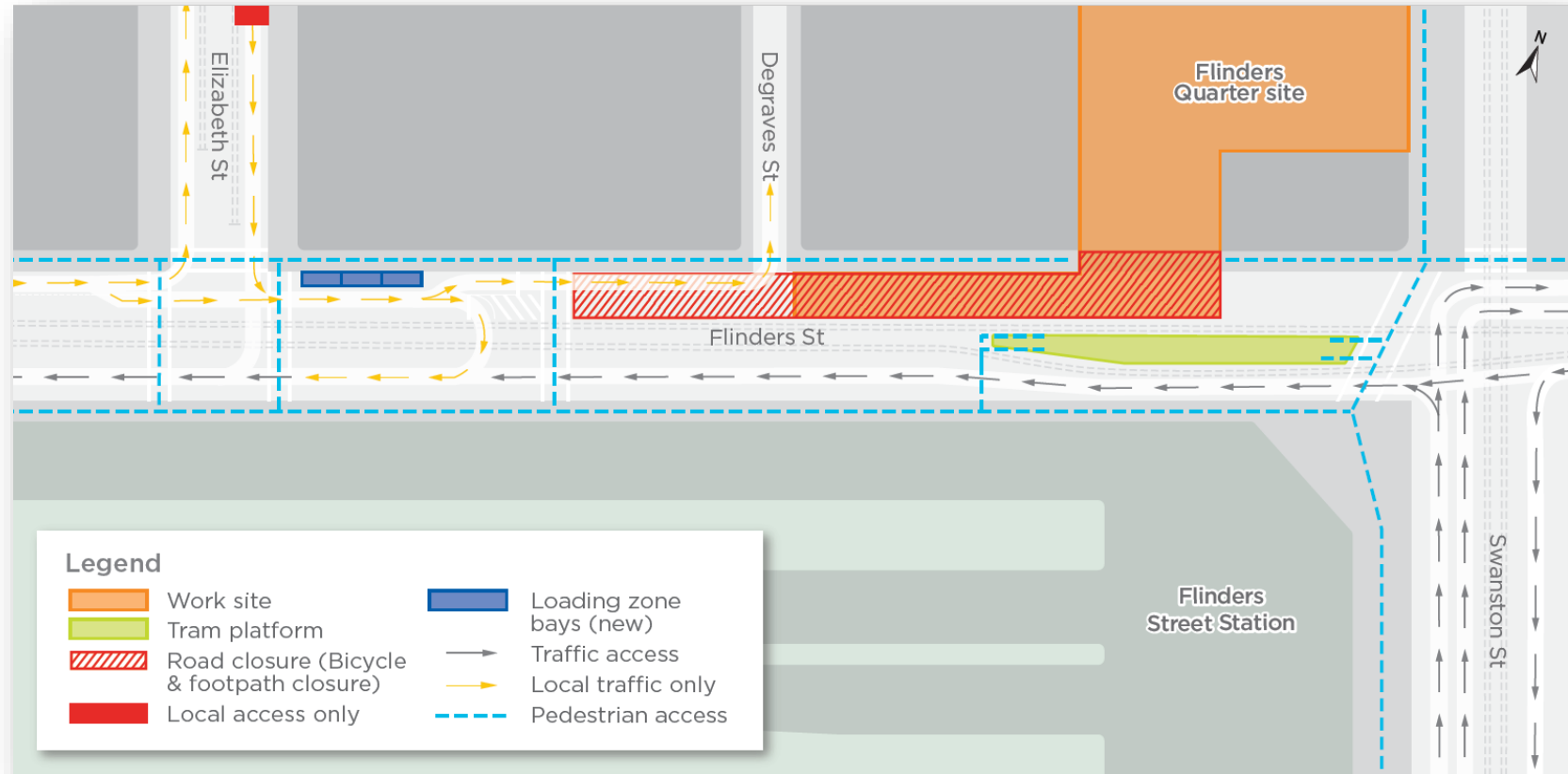
*Time-chainage-program-RevH13-(04/03/2019)¶

**May-22-to-completion-are-estimates-only¶

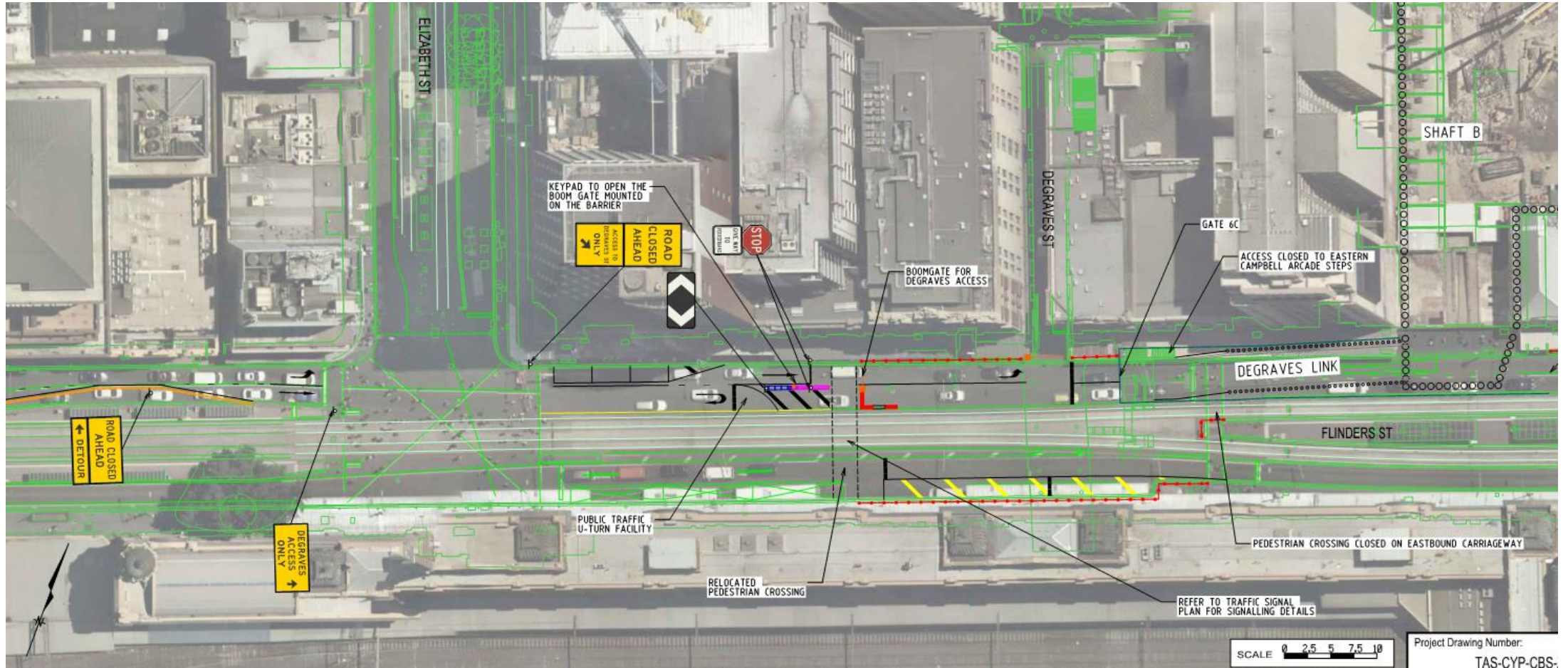
TRAFFIC ARRANGEMENTS

SEPTEMBER 2019

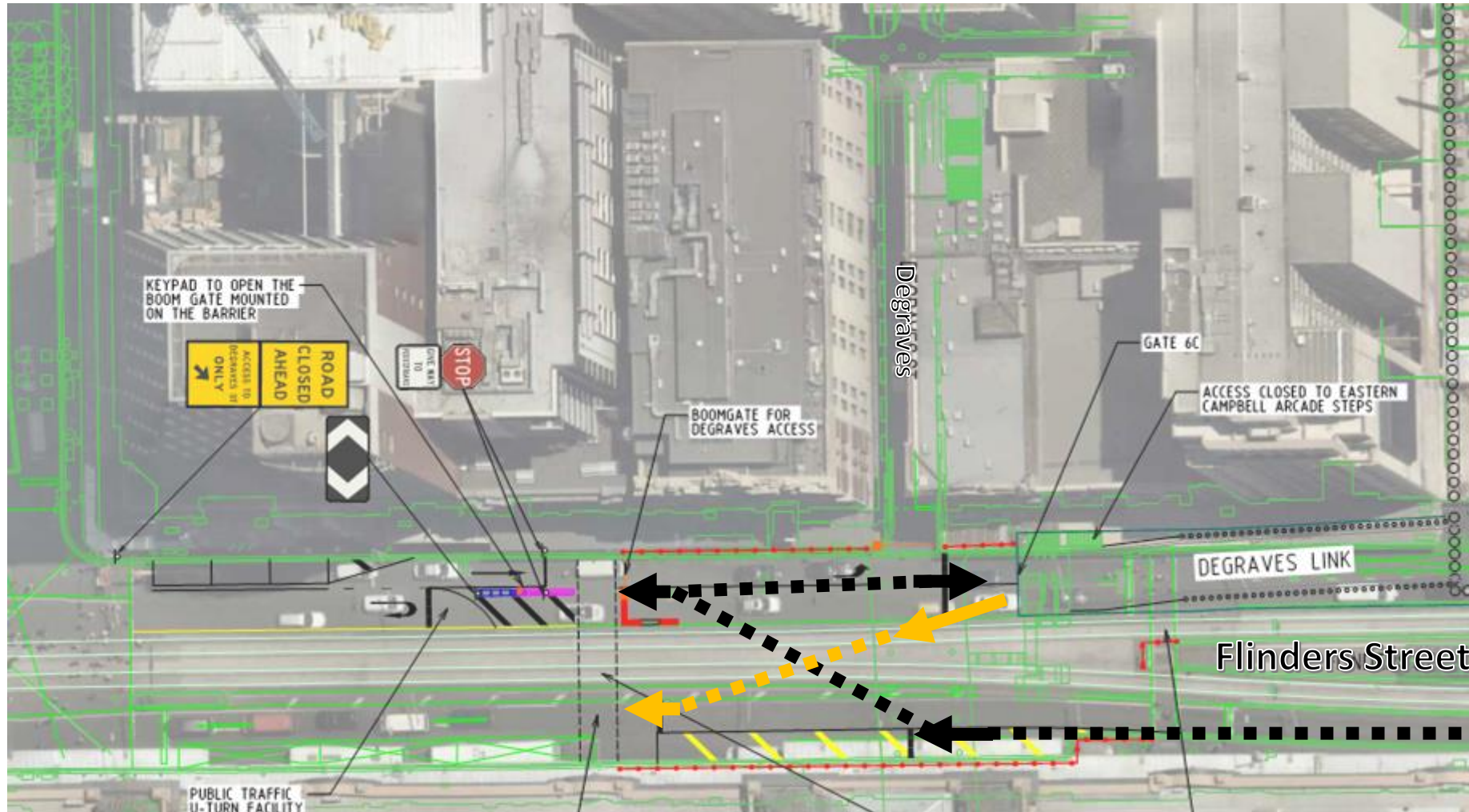
LONG TERM TRAFFIC ARRANGEMENT COMMENCES – UP TO THREE YEARS



SITE SET UP/TRAFFIC ARRANGEMENTS



DEGRAVES SWITCH BACK



PEDESTRIAN DIVERSIONS



Mitigation measures include:

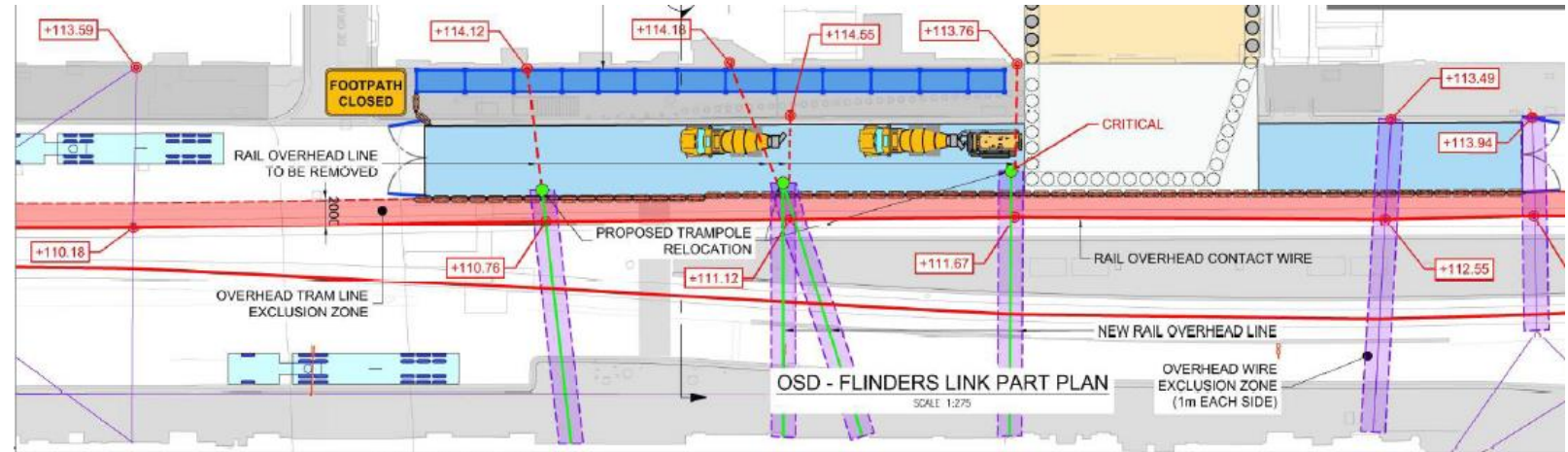
- New pedestrian crossings on Flinders Street
- Way finding signage to encourage routes with more capacity
- Signal timing changes



STAGING

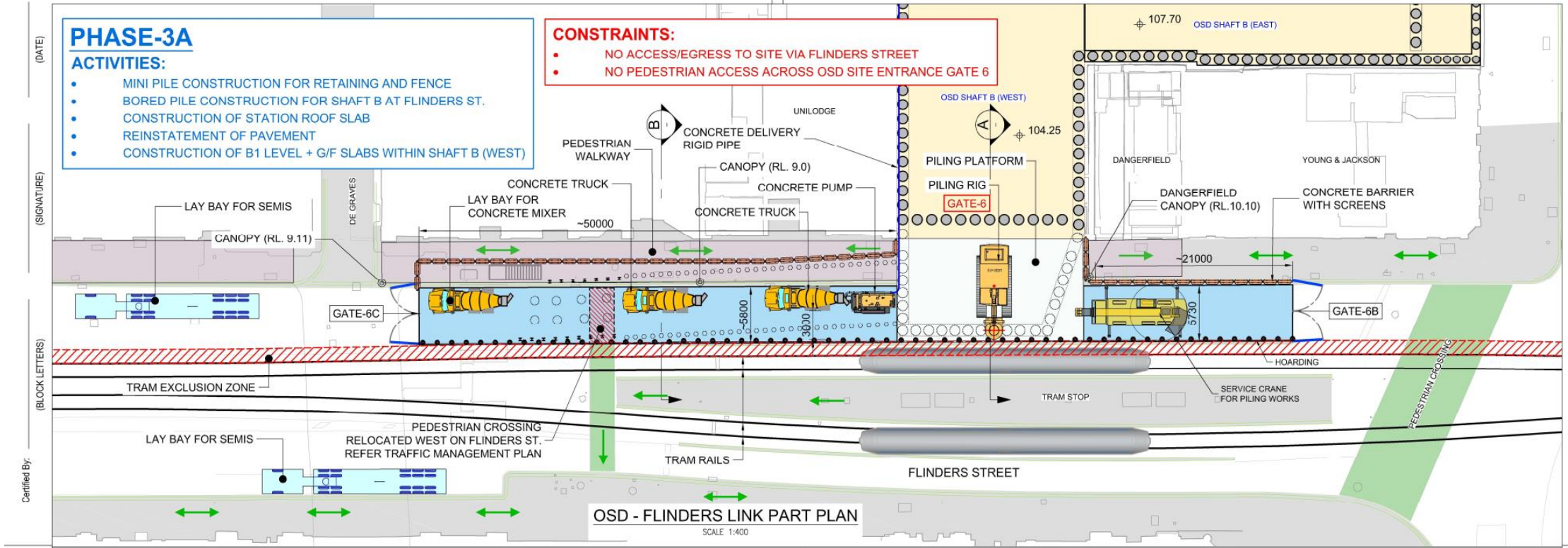
YARRA TRAM OCCUPATION

- 9pm-5am
- September 9-12 (3 nights)
- Tram pole relocation works



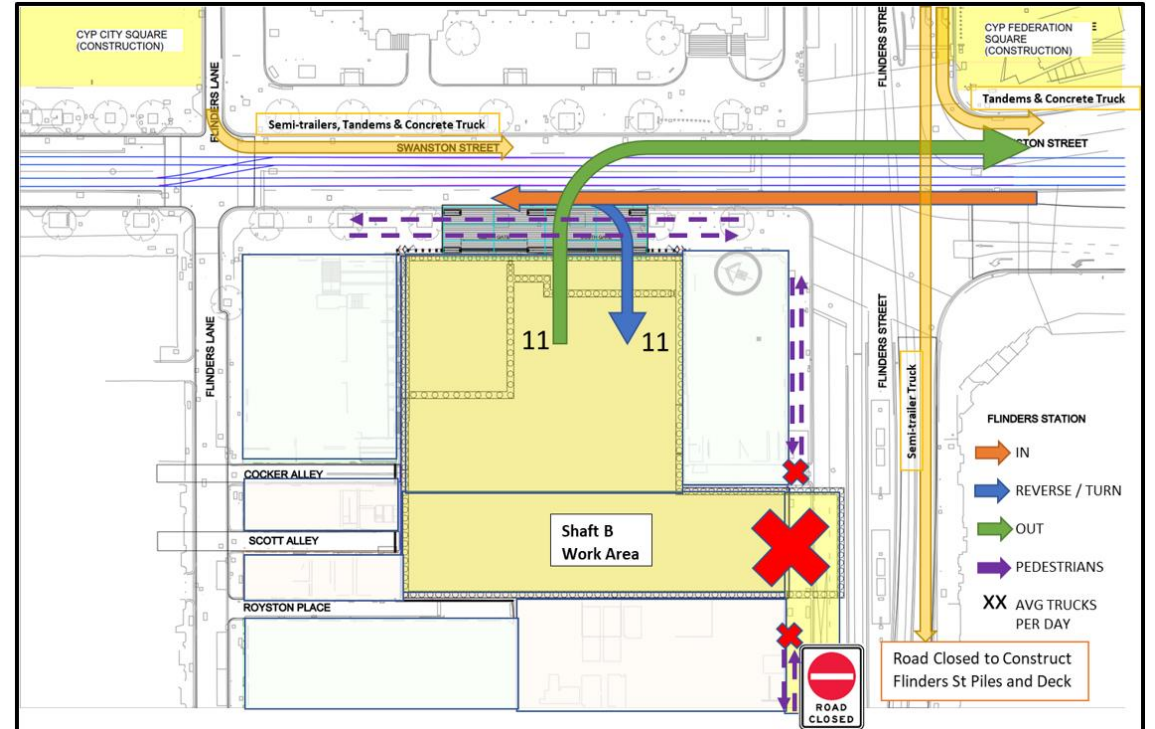
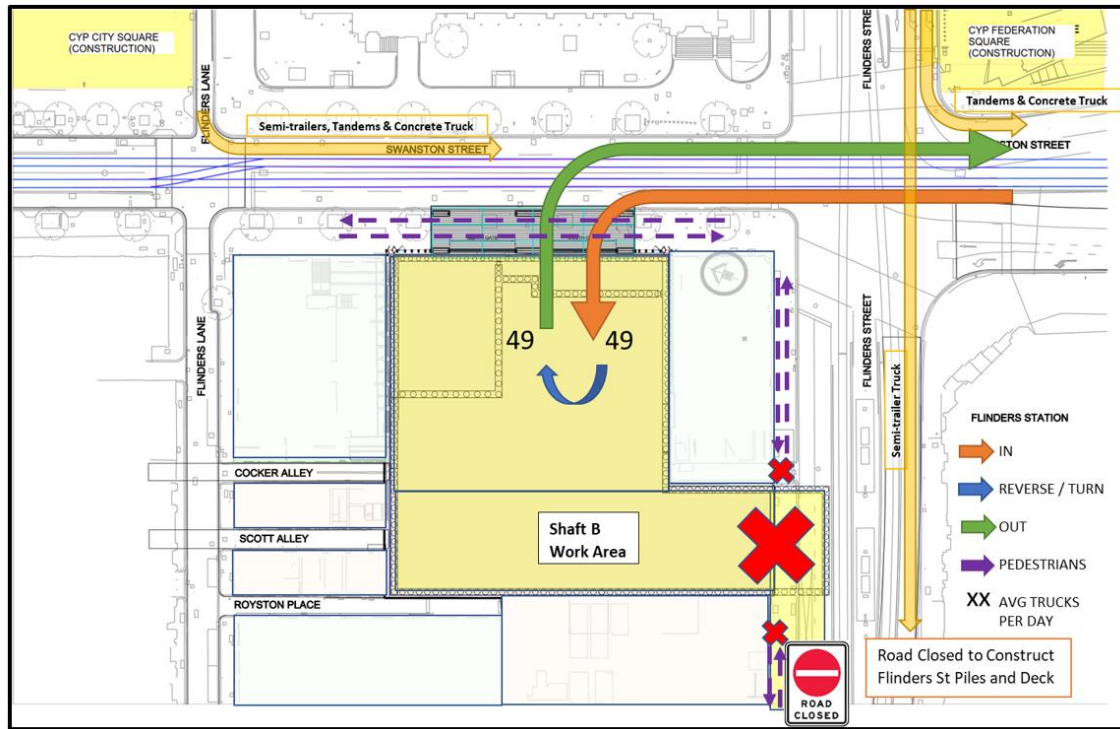
SEPTEMBER 2019

LONG TERM TRAFFIC ARRANGEMENT COMMENCES
 PHASE 3A –SEPTEMBER 2019 TO JULY 2020 (10 MONTHS)



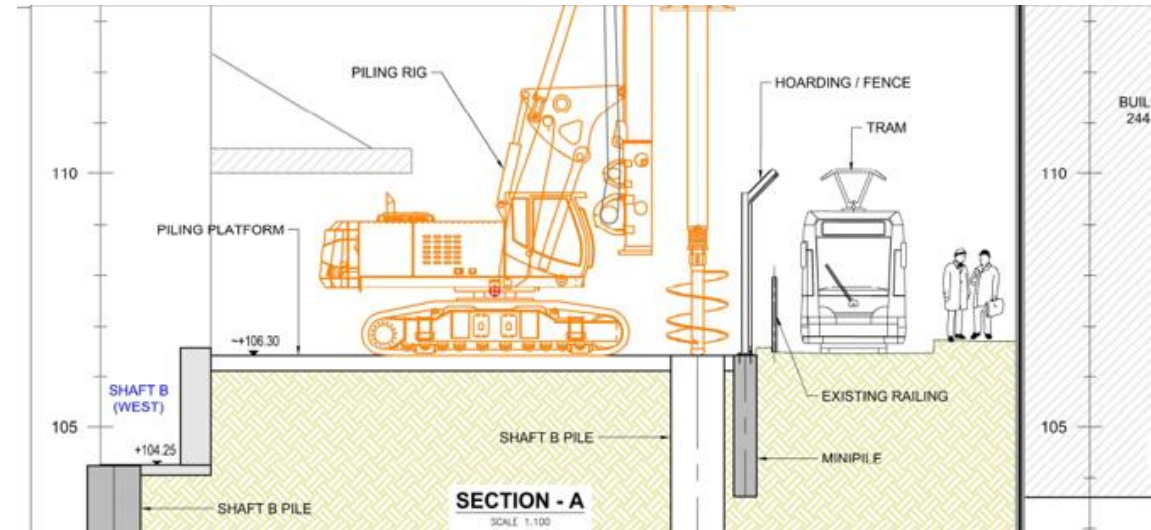
SEPTEMBER 2019

LONG TERM TRAFFIC ARRANGEMENT COMMENCES
 PHASE 3A –SEPTEMBER 2019 TO JULY 2020 (10 MONTHS)



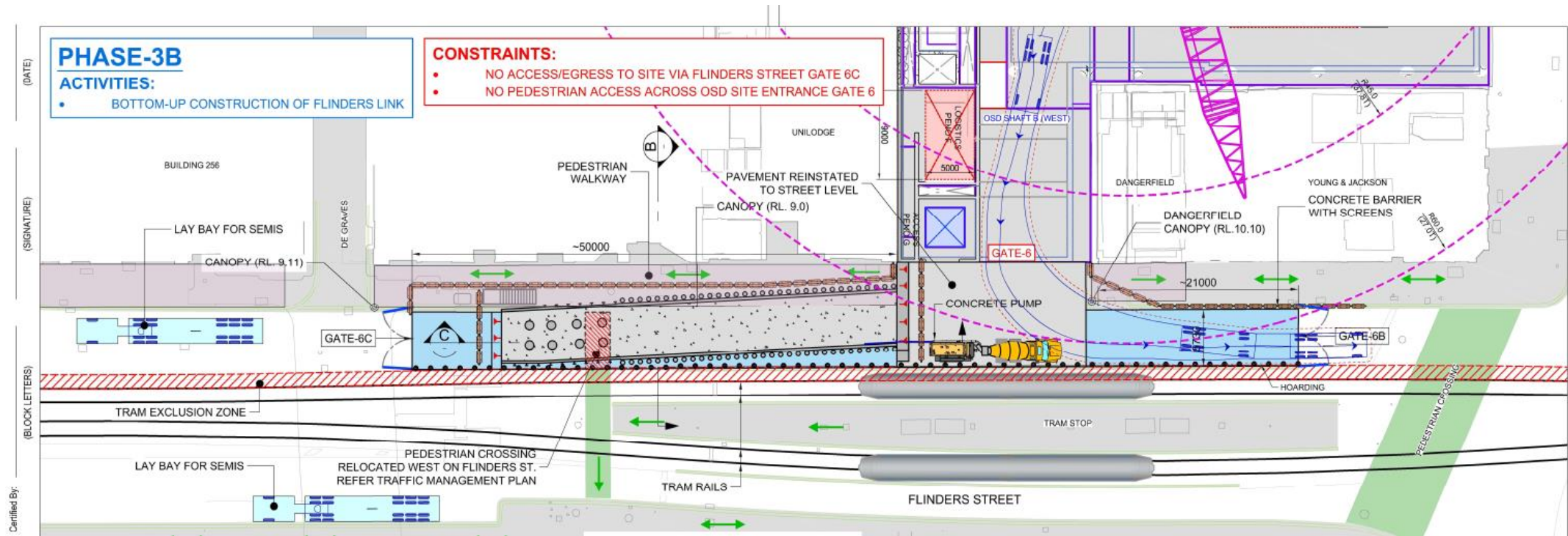
TRAM OCCUPATION

- 24/6
- 2nd-8th of October
- (6 days/nights)



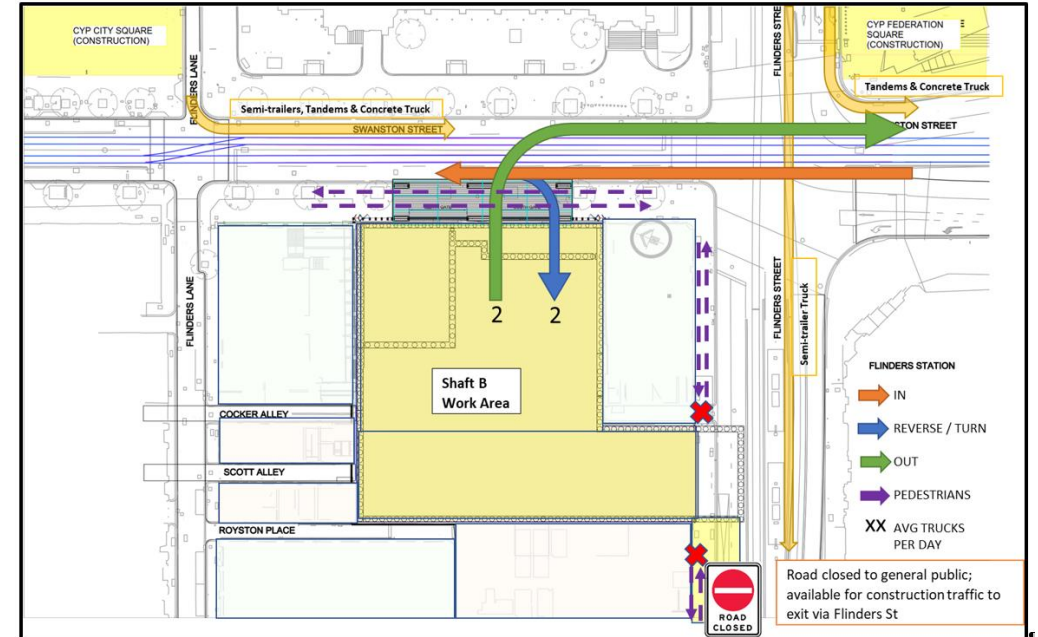
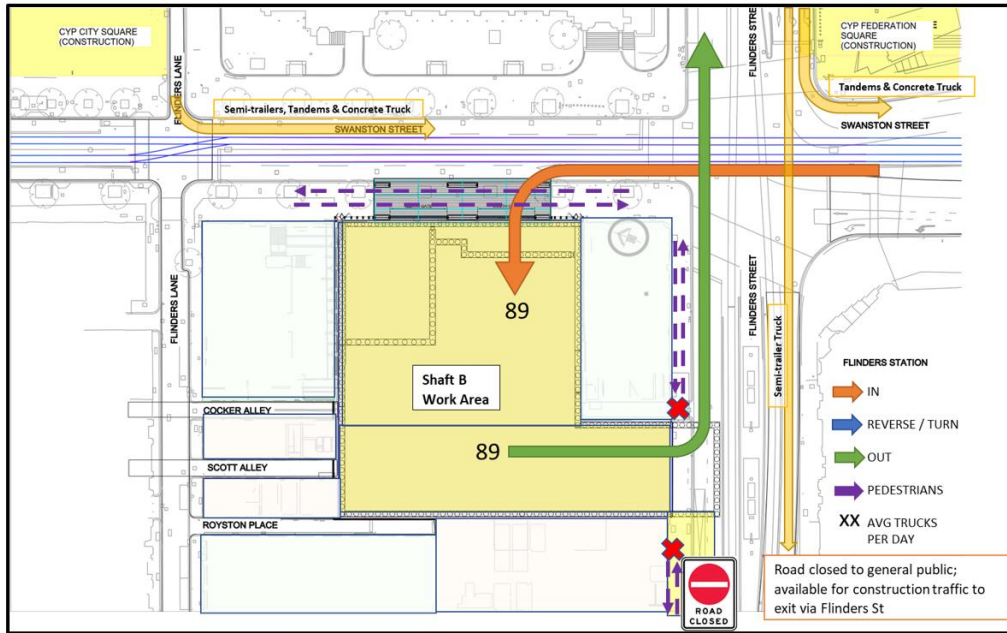
PHASE 3B FLINDERS LINK

JUNE 2020 - DECEMBER 2020



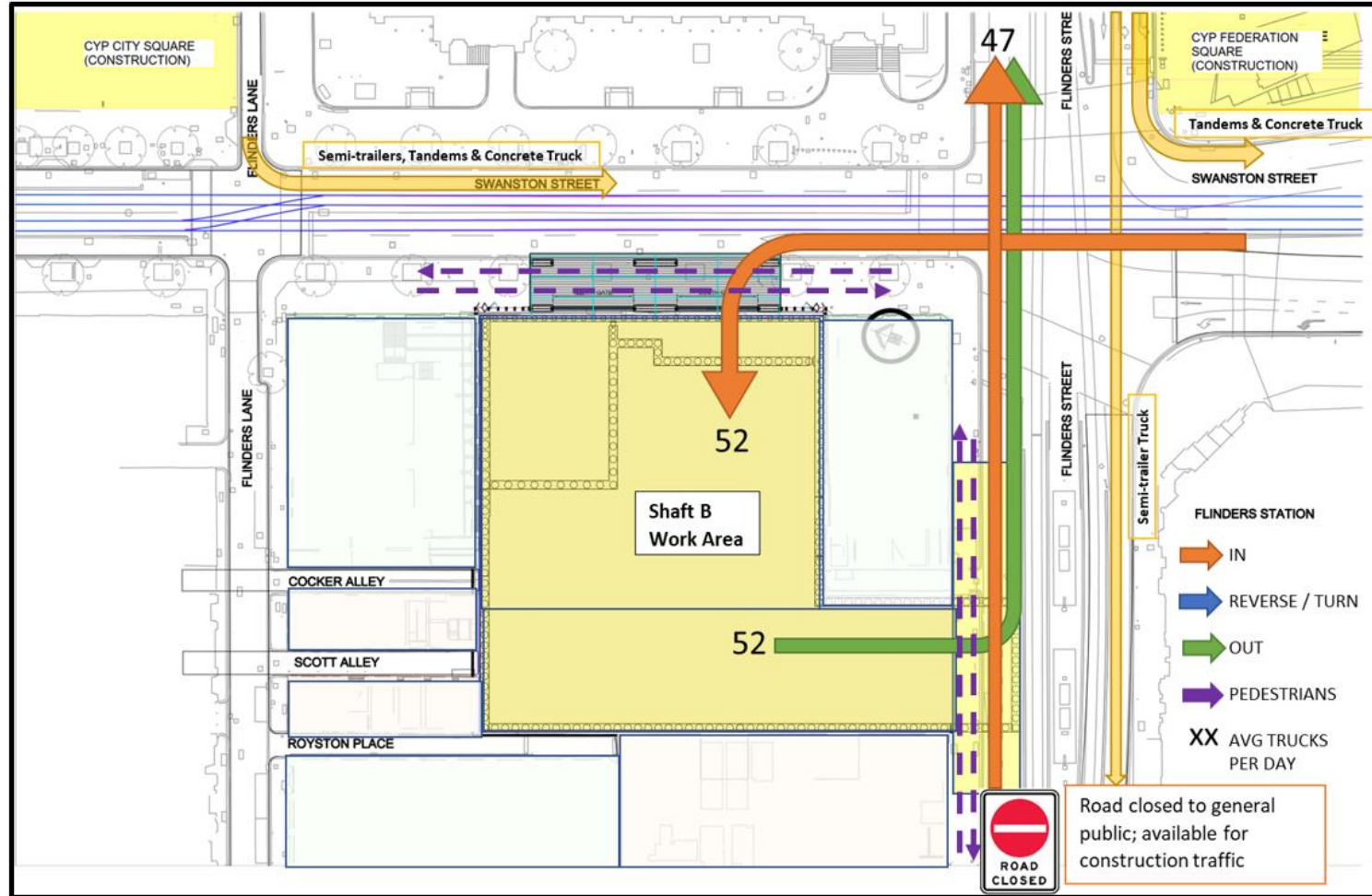
PHASE 3B FLINDERS LINK

JUNE 2020 - DECEMBER 2020



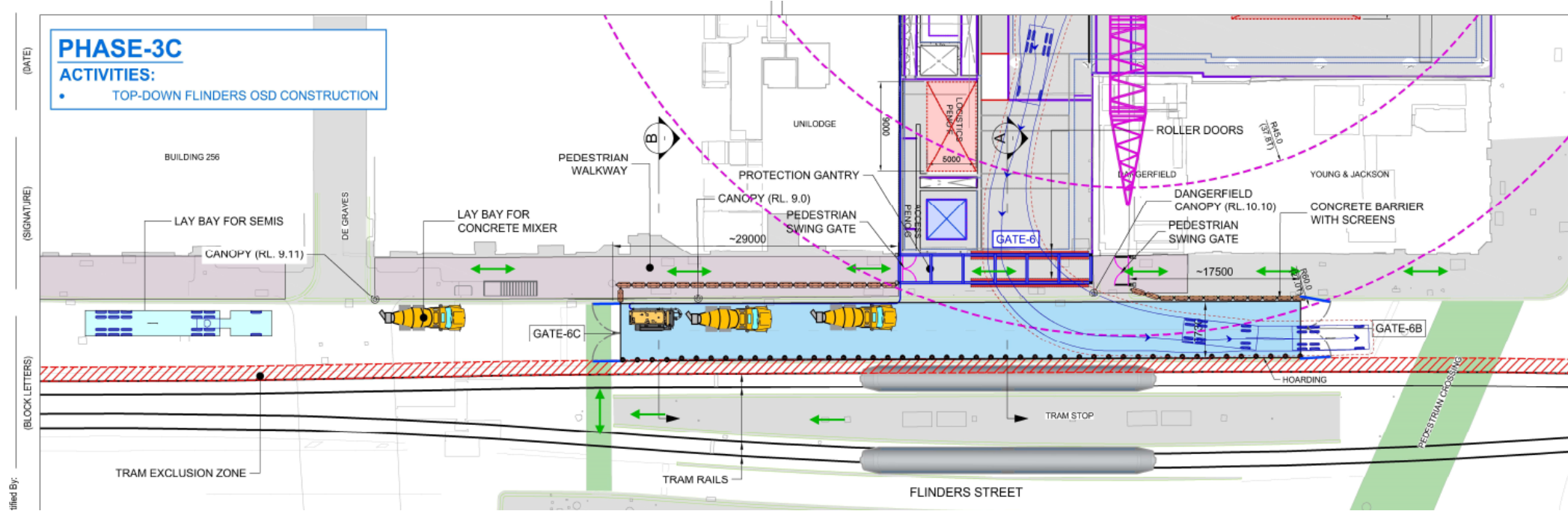
PHASE 3C SHAFT B 'TOP DOWN'

DECEMBER 2020- DECEMBER 2021



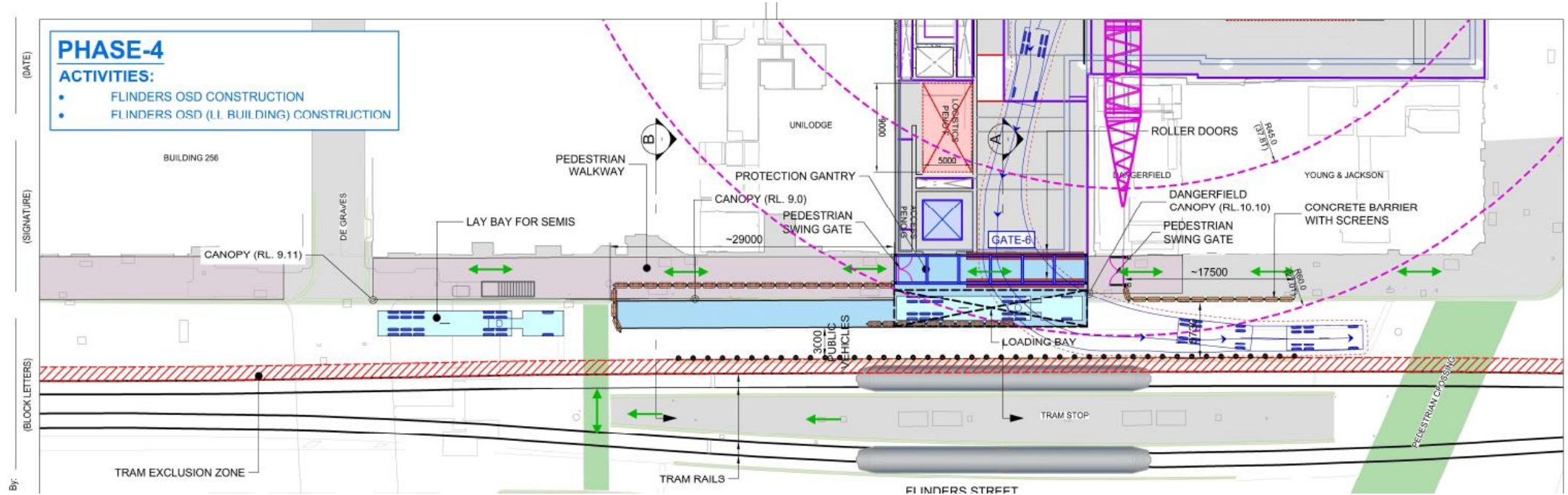
PHASE 3C SHAFT B 'TOP DOWN'

DECEMBER 2020- DECEMBER 2021



PHASE 4 STATION DEVELOPMENT

DECEMBER 2021 – DECEMBER 2024



FLINDERS QUARTER






FLINDERS QUARTER AUGMENTED ART WALK

Proudly supported by



Construction partner:





FLINDERS QUARTER
AUGMENTED ART WALK
Experience art differently
14 Aug - 14 Sep 2019

An 11-level office and retail
work - internalised shopping
streets (ground to level
typical encouraged leisurely
walking through the building
to view window displays
within a labyrinth of
generous and naturally lit
corridors. These floor plates
were increased by engaging
a hybrid steel structural
system to the lower levels,
and concrete above. A large
light-court (Levels 3-9)
successfully makes use of
the deep block size and
maximises the building's
commercial viability.

The image shows two individuals from behind, holding a smartphone and a tablet. The smartphone screen displays a red and white fractal pattern. The tablet screen shows a green and blue fractal pattern with a central figure. In the background, a large, colorful, abstract artwork with concentric, swirling patterns is visible. The text 'EYEJACK' is overlaid in a large, white, bold font on a black rectangular background.

EYEJACK

Augmented reality (AR) app & platform
specialising in the curation
and distribution of AR art
via animation and sound

The background features a dark, starry space with vibrant, glowing geometric shapes in shades of blue, pink, and purple. These shapes are layered and semi-transparent, creating a sense of depth and movement. The overall aesthetic is futuristic and digital.

12 x ARTWORKS

12 x LOCATIONS

7 x ARTISTS

1 x MONTH

Degrares Place
 Journal Cafe
 City Library
 Bared Store (new),
 Manchester Lane
 Scott Alley
 Vintage Sole,
 Cathedral Arcade
 Flinders Lane
 Gallery,
 Nicholas Building
 Young & Jackson
 Dangerfield
 Campbell Arcade
 (underground)
 Cnr Flinders and
 Degrares Sts
 DoubleTree by Hilton
 Hotel



A woman with long blonde hair is performing on stage. She is wearing a black top and has two microphones in front of her. She is looking upwards and to the right. The background is a vibrant, abstract wall with large, colorful brushstrokes in shades of pink, blue, yellow, and green. The overall atmosphere is energetic and artistic.

VEXTA

*The Rising Orb: Hope
Degraves Place*



ALEX MITCHELL

Many Hands & Many Hands II
Manchester Lane/Bared Store
Campbell Arcade



The image features two identical pink, fuzzy creatures with long, segmented necks and small, dark, circular eyes. They are positioned symmetrically on either side of the center. Above them is a circular, metallic-looking object with a grid pattern. The background is a textured, greyish surface.

THE HUXLEYS

Pink Fit

Scott Alley



CHELSEA GUSTAFSSON

Standing Room Only

Vintage Sole

Cathedral Arcade



JACOB LEARY

Stuff in Nature, Nature in Stuff

Flinders Lane Gallery

Nicholas Building



CHLOE

Young & Jackson



ADELE VARCOE

Growing Garments

Corner Degraives and Flinders Streets

A person's hands are holding a tablet computer. The tablet screen shows a 3D model of a city with green buildings. The background is a white wall with a textured, stucco-like finish. Several framed artworks are visible on the wall. One large frame on the left contains a circular, detailed architectural drawing of a city. Another frame on the right shows a black and white illustration of a figure, possibly a dancer or a person in a dynamic pose, within a circular frame. The overall scene suggests a digital art installation or a presentation of digital content in a gallery or cafe setting.

SUTU

Portal @ Journal Cafe

City Brain @ City Library

The Flight @ DoubleTree by

Hilton Hotel Melbourne

Printed Map

- Illustrated by Isobel Knowles
- 10,000 x print run
- Distribution – FQ businesses, Metro Tunnel HQ,

Time Out Advertising

- Online and mobile
- 4 x week campaign – from 15 August
- Digital ads and editorial

PR/Media

- Targeting consumer and business (proactive and reactive PR)
- Channel 9 feature

Social Media

- 6 x week campaign
- Pre and post launch content
- Consumer promotions
- Business support

Other Marketing

- City of Melbourne – What's On
- Metro Tunnel

- Business meetups x 3
- Sites for artwork
- Distribution points for programs
- Cross promotions in-store, social, networks

STATE LIBRARY STATION UPDATE



**STATE LIBRARY STATION
TUNNEL BREAKTHROUGH JULY 2019**



EXCAVATION UPDATE

TUNNEL BREAKTHROUGH

The three roadheaders met 30 metres underground in our first major breakthrough on the project, connecting two excavated caverns that will become the new State Library Station



FOURTH CBD ROADHEADER ARRIVES AT LA TROBE

MEET MELINDA

- CBD's fourth road header
- Weighs 70 tonnes
- Smaller than the other three road headers but just as powerful on a power to weight ratio
- Moving east, from the La Trobe Street shaft across Swanston Street





FRANKLIN STREET WEST UPDATE

FRANKLIN STREET WEST UPDATE

Activity	Location	Aug	Sept	Oct	Nov	Dec	Jan	
Deck construction	Site	—		●				
Acoustic shed construction	Site			●	—		●	
Shaft excavation	Site					●	—	
Overhead gantry installation	Street		●	●				

LITTLE LA TROBE STREET

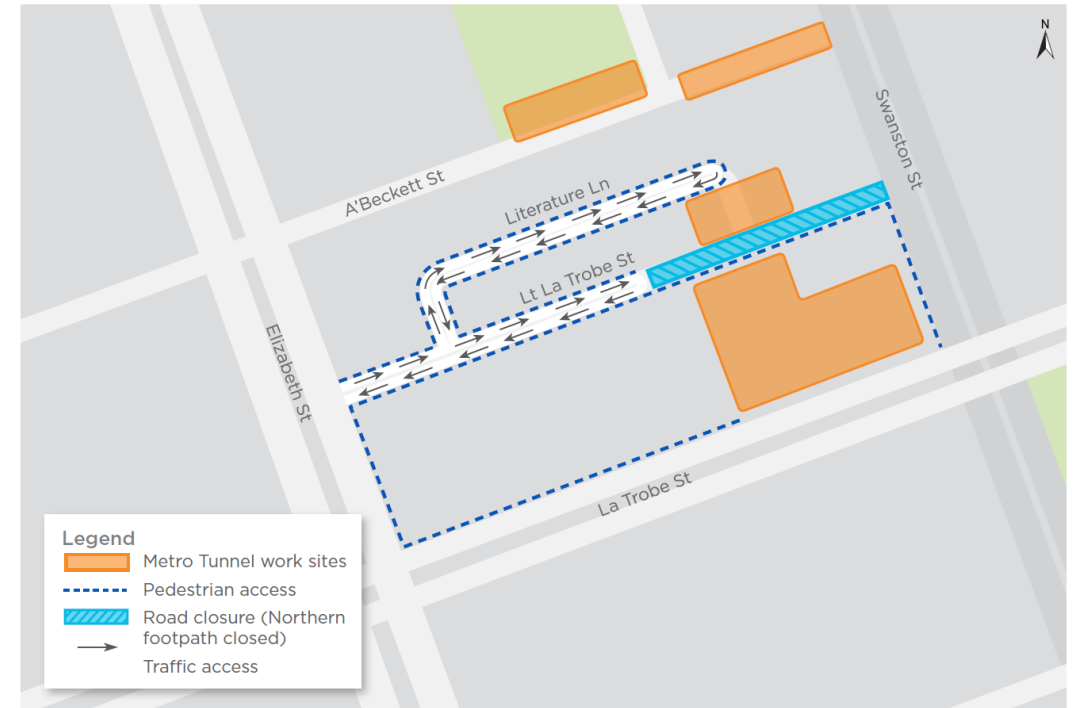
LITTLE LA TROBE STREET UPDATE

Activity	Aug	Sept	Oct	Nov	Dec	Jan
Archaeology	●					
Road surface works	●	●				
Piling pad construction and preparation works	●	●				
Piling			●	●	●	●

ROAD SURFACE WORKS

Before piling commences, works are required on Little La Trobe Street to install and relocate services, create a loading zone and a shared user thoroughfare for motorists, pedestrians and cyclists

- 3pm to 10pm, Monday to Fridays between 12 August to 16 August
- 7am to 6pm, Monday to Fridays between 19 August to 30 August
- 24hr road closure between 19 August to 30 August



Indicative only



LA TROBE STREET UPDATE

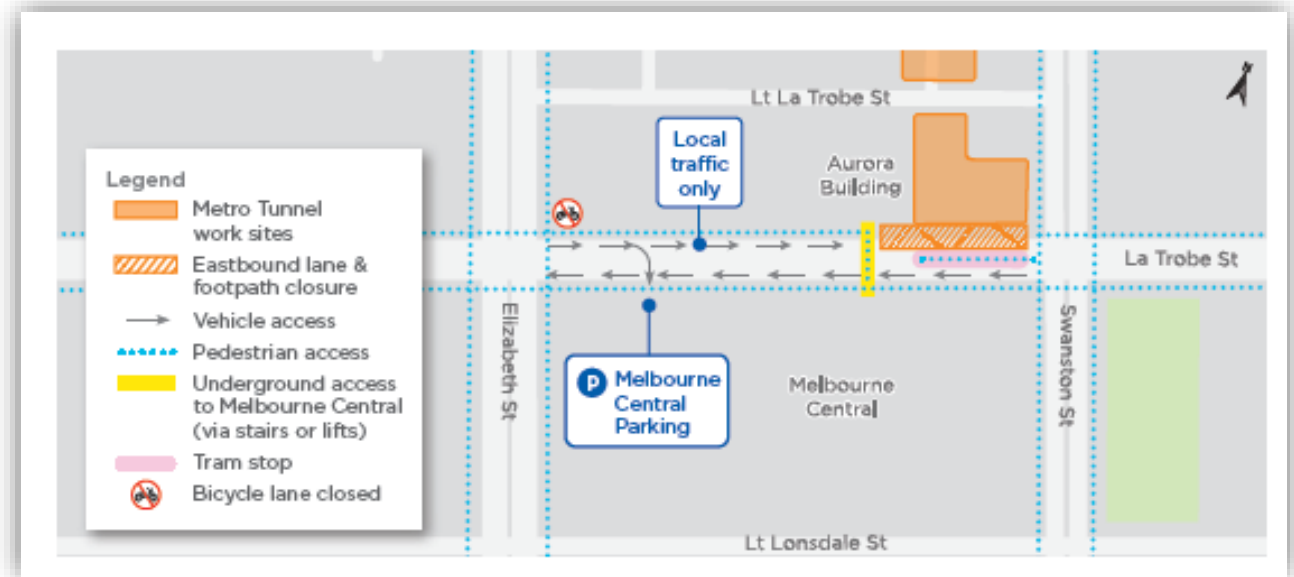
LA TROBE STREET SITE UPDATE

Activity	Location	Aug	Sept	Oct	Nov	Dec	Jan
Tunnelling	Site	[Solid blue bar spanning Aug to Jan]					
Perimeter piling and plunge columns	Site	[Solid blue bar spanning Aug to Jan]					
La Trobe St service works (tram pole relocation)	La Trobe St	[Blue line with dot in Aug]	[Blue line with dot in Sept]				

LA TROBE STREET TRAM POLE RELOCATION WORKS

5 AUGUST – 18 AUGUST

- 24/7 works Monday to Sundays between Monday 5 and Sunday 18 August
- La Trobe Street eastbound traffic lane closure



LA TROBE STREET OUT OF HOURS WORKS

Piling works

- Monday to Fridays, 7am-6pm
- Saturdays, 7am-6pm
- Mondays to Fridays, 6pm-10pm, Concrete pours as required

Tunnelling

- 24/7 Monday to Sundays, ongoing

Tram Pole relocation works

- 24/7 works Monday to Sundays between Monday 5 and Sunday 18 August

5 AUGUST – MID-SEPTEMBER

- 8pm-6am, Sunday to Thursdays

Stage one: 5 August – mid-August

- Works will involve service scanning, surveying and using CCTV trucks

Stage two: mid-August – mid-September

- Works will involve saw cutting, NDD, backfilling and reinstating the road surface



QUESTIONS?

