



KENSINGTON COMMUNITY REFERENCE GROUP

MEETING 15

27 OCTOBER 2020

CONSTRUCTION UPDATE

Presenters

Niall Forbes (RIA Civil Construction Manager – Western Portal)

Kim Mas (CYP Construction Manager)

WHAT'S BEEN COMPLETED



Egress building, below ground structure

- North (eastbound tunnel) collar beam
- Internal (core) walls
- Suspended 'roof' slab



**CROSS PASSAGE 4 INVERT (FLOOR)
COMPLETE**

Presenter: Kim Mas (CYP)



PROPPING COMPLETED

Niall Forbes (RIA)



EXCAVATION PROGRESS

Niall Forbes (RIA)



EXCAVATION PROGRESS

Niall Forbes (RIA)



FLOOD COMPENSATORY SOIL NAIL WALL PROGRESS

Niall Forbes (RIA)



SER/CER PILING COMPLETED

TUNNEL ENTRANCE NOISE MONITORING - EVENING WORKS

Activity	Modelled noise	Applicable Noise level	Monitored noise
Excavation (underneath roof slab)	52dB	Leq(15-min) 51dBA	50-54dB
Steel fixing and formwork (ground slab)	49dB	Leq(15-min) 51dBA	48-52dB
Roof slab preparation and tunnel entrance works	49dB	Leq(15-min) 51dBA	48-52dB

- *Peaks noise levels from trains are approx. 74dB which can influence Leq(15-min)*
- *Monitored noise is consistent with modelled noise levels*

TUNNEL ENTRANCE PROGRAM LOOKAHEAD

Activity	Oct 2020	Nov 2020	Dec 2020	Jan 2021	Feb 2021	Mar 2021
Tunnel entrance excavation						
Tunnel entrance ground slab works						
Sump works (within decline structure)						
Internal tunnel entrance walls						
Roof slab detention tank						
D-wall finishing's						
Childers Street drainage						
Flood wall panel installation						
Public realm works						

Program is indicative and subject to change

Summer shutdown period TBC

Presenter: Niall Forbes (RIA)

TUNNEL ENTRANCE OUT OF HOURS WORKS

Challenges

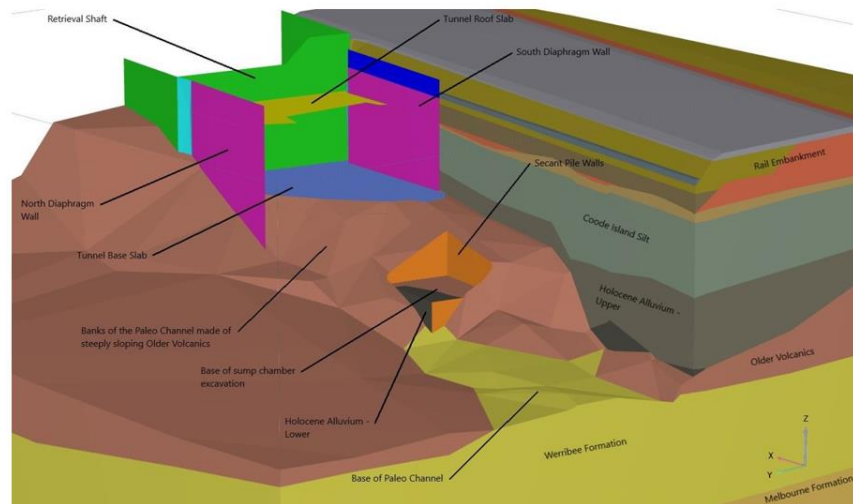
- Greater variability in ground conditions, resulting in increased design requirements
- Increase ground water predicted, based on updated ground condition modelling, requiring greater complexity (and subsequently more time) in the construction methodology.

Upcoming Works

- Jet grouting
- Excavation (sump)
- Steel fixing, timber formwork installation and concreting
- Installing pre-cast concrete panels
- Lifting materials into the tunnel entrance
- Dewatering (as required)

Timing

- 24-hours, from 7am Monday to 7pm Saturdays, until early 2021
- No work on Saturday evening or Sundays



OVERNIGHT WORKS - NOISE MODELLING

Activity	Modelled noise (closest residential receptor) - dBA	Modelled noise (closest residential receptor – Altona Street) - dBA
Tunnel entrance ground slab preparatory works	54	46
Dewatering	47	43
Formwork and steel fixing	50 to 53	44 to 49
Concrete panel install and material delivery	52	49
Sump excavation	54	46
Fencing and minor tunnel entrance works	52	49
Jet grouting	54	50

OVERNIGHT WORKS – MANAGEMENT ACTIONS

Management actions

- Flexible respite and relocation offers (discussions with residents on a case-by-case basis)
- Existing temporary noise barriers
- Replacement of plant to quieter equipment
- Changes in planned methodology to eliminate use of equipment which would generate higher levels of noise:
 - Removal of an NDD truck for jet grouting works
 - Removal of excavators from surface during sump excavation
- SMS alerts issued to site team when noise exceedances are recorded to investigate

CONSTRUCTION PROGRAM

Activity	Oct 2020	Nov 2020	Dec 2020	Jan 2021	Feb 2021	Mar 2021
Egress building – below ground structure						
Egress building – above ground structure						
Service investigations, Childers & Tennyson Streets						
Cross passage ground improvement reinstatement						
Cross passage construction (underground works)						
SER/CER Construction						
Compensatory Flood Storage – Soil nail wall						
Rail corridor works						

Program is indicative and subject to change

Summer shutdown period TBC

Presenters: Kim Mas (CYP); Niall Forbes (RIA)

RAIL CORRIDOR WORKS

Timing

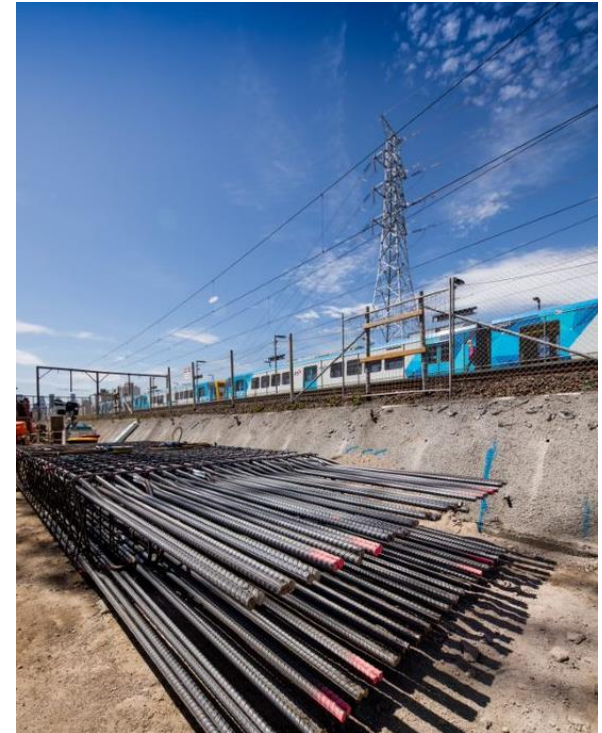
- 24-hour works (some activities during days only)
- 6 November to 16 November

Works

- Service pipe and pit installation (24-hours)
- SER/CER bored piling (7am to 7pm)
- Compensatory flood storage soil nail wall (24-hours)
- Egress building south wall construction (24-hours)
- Fencing works, rail corridor maintenance and inspections (7am to 7pm)

Travel changes

- Buses will replace trains on the full length of the Sunbury Line between 8.30pm Friday 6 November to last service Monday 16 November. Buses will also replace trains between Sunshine and Sunbury from first service Tuesday 17 November to 3.30am Sunday 22 November.



EGRESS BUILDING SOUTH WALL (ABOVE GROUND) CONSTRUCTION

- Preparatory works ongoing from 7am to 10pm, Monday to Friday; 7am to 6pm Saturdays
 - Stripping of suspended slab formwork
 - Strut removal
 - Shotcreting
- South wall must be constructed while trains are not running due to proximity to the rail corridor
- 24-hour works, from 6 to 16 November:
 - Installation of formwork and reinforcement
 - Pouring concrete and spraying shotcrete to construct the wall
 - Stripping formwork
- Post 16 November, works revert to regular construction hours



COMMUNITY UPDATE

COMMUNICATION AND ENGAGEMENT

Notifications and communications

- September out of hours works notification (17 September)
- SER/CER works notification (30 September)
- October Kensington Construction Update (2 October)
- Tunnel entrance overnight works (5 October)
- November rail corridor works notification (24 October)
- *Letterbox drops have recommenced under Second Step*

Door knocks, meetings, briefings and events

- Lloyd Street Business Estate progress meeting (2 October)
- Kensington Community Childcare Co-operative progress meeting (16 September)
- City of Melbourne fortnightly progress meetings (16, 30 September, 14 October)
- 15 one-on-one communication/discussions with community members and businesses throughout October for tunnel entrance works



CHILDERS STREET CLOSURE

Community engagement completed (September/October 2020)

- 13 online submissions received through the online survey. Online feedback survey was available at **metrotunnel.vic.gov.au** from 22 September to 4 October
- 2600 information letters distributed to residents
- 11,000+ online impressions (facebook/twitter)
- 18 attendees at information sessions (22 and 29 September)
- Online meetings with LSBE representatives

Key themes identified during community feedback period

- Safety along the detour route
- Overnight truck movements
- Vehicle volumes during Covid-19 and truck volumes on Derby Street
- Duration required for closure and potential for further closures

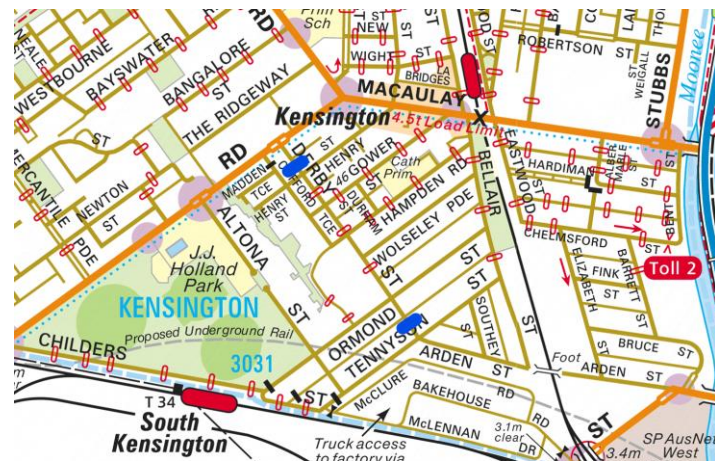


DETOUR VEHICLE MONITORING

Location	Weekday (5-day average) vehicle movements	Weekday (5-day average) truck movements	Peak truck movements in one day
North of Henry Street	1658	104 truck movements	128 truck movements
South of Ormond Street	352	60 truck movements	83 truck movements
Tennyson Street boom gate	N/A	48 truck movements	53 truck movements

Data collected in October 2020

Covid-19 Monitoring	Average (weekday/5-day average)
March/April 2020	18 trucks per day
August 2020	20 trucks per day
September 2020	22-23 trucks per day



1. North of Henry Street
2. South of Ormond Street
3. Tennyson Street boom gate

Presenter: Jarrod Scurry



CHILDERS STREET CLOSURE

Next steps

- Project team are reviewing and considering feedback received
- Reviewing the worksite traffic management plan to incorporate additional safety measures
- Additional information (letter to be distributed and information available online) to be provided to the community which will include details of:
 - COVID-19 traffic volumes along the detour route
 - Derby Street truck volumes from additional monitoring
 - Why the closure is required until September 2021
 - Additional safety measures which will be considered.

A decision on the proposed closure extension is expected in early November

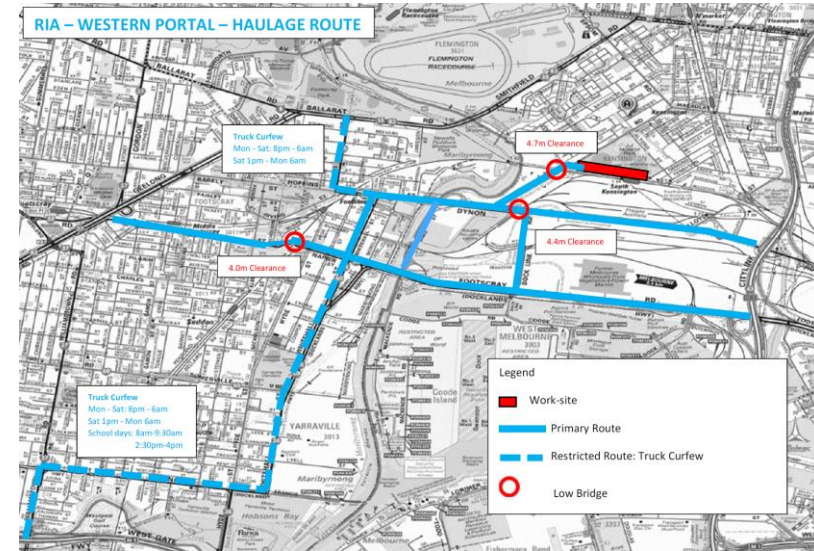
OFFSET PARKING

- A partial closure is in place at the Hobsons Road offset carpark to allow for SER/CER works
- A full closure expected in late 2020 to undertake works safely
 - Currently reviewing staging of works to determine what parking can be retained safely
 - Investigating areas for additional parking nearby for when full closures are required
 - Monitoring parking numbers as COVID-19 restrictions ease
- Closure in place until parking is reinstated on Childers Street in Mid-2021
- Provision of additional workforce car parking within 1-39 Hobsons Road site compound



TRUCK MOVEMENTS

- Improved truck route compliance following project observations
- Subcontractor issued with a formal notice following community feedback
- Recent community feedback noted an improvement since this item was raised in September
- Local community member identified non-project concrete trucks servicing Moonee Ponds construction sites





PLANNING AND DESIGN



LEGACY PARKING UPDATE

- Future use of Hobsons Road car park
- Update on the removal of 3 parking spaces



OTHER ITEMS?



Western Portal

South Kensington

Arden

Parkville

State Library

Town Hall

Anzac

Eastern Portal

Sunbury Line

North Melbourne

Melbourne Central

Flagstaff

Southern Cross

Flinders Street

Parliament

Richmond

South Yarra

Cranbourne / Pakenham Line