



## KENSINGTON & ARDEN COMMUNITY REFERENCE GROUP

---

13 SEPTEMBER 2018

# ARDEN (NORTH MELBOURNE) PRECINCT



# DISCUSSION ITEMS

- Installation of hoarding along southern border of site
- City of Melbourne drainage clearing



# PROGRAM



# PROGRESS UPDATE

## Ongoing activities

- Site establishment
- D-wall construction – 50% complete
- Piling – 56% complete
- Surveying
- Sampling/testing of groundwater & soil
- Clearing and CCTV of drains





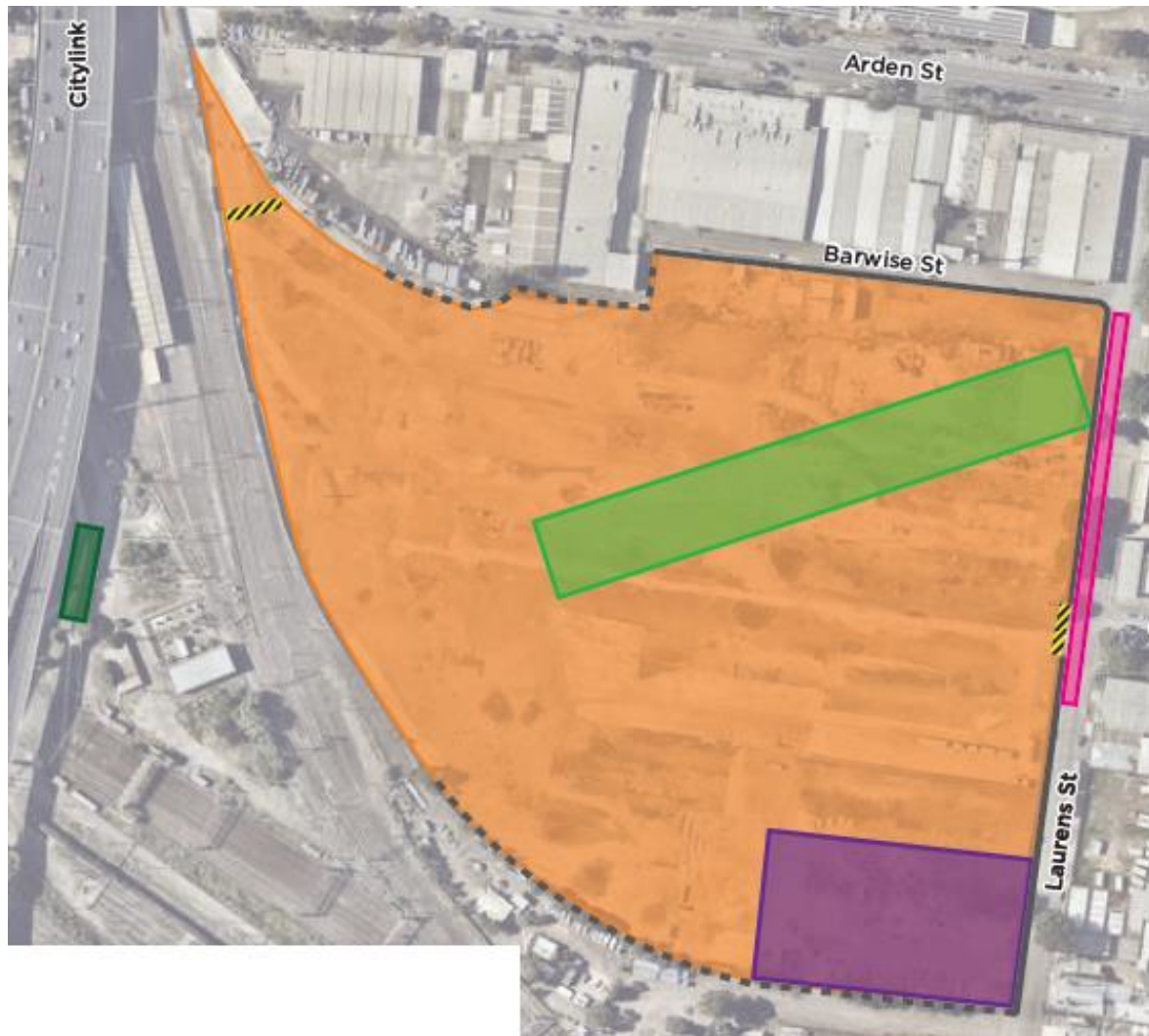


# CONSTRUCTION LOOKAHEAD

## What's coming up

- Station box excavation & strutting (out of hours works - 6pm to 7am)
- Early works for concrete batching plant





### Legend

-  Work site
-  Site gate
-  CBD construction support
-  Piling platform & diaphragm wall construction
-  Temporary pedestrian/cyclist detours
-  Drain clearing
-  Existing hoarding
-  Hoarding installation

# CONSTRUCTION PROGRAM

Activity	Aug	Sep	Oct	Nov	Dec	Jan
Site establishment						
D-wall construction						
Piling						
Excavation of station box						
Base slab construction						
Drainage clearing						
Install/modify hoarding & gates						

# TRAFFIC AND TRANSPORT



# TRAFFIC MANAGEMENT

- Up to 120 trucks per day associated with D-wall, piling and excavation
- Trucks accessing site via Laurens and Arden Streets for major construction activities
  - All out of hours truck movements via Arden Street
- Some trucks accessing site via Queensberry Street for Early Works CBD construction site support activities



# TRANSPORT CHANGES

- Overnight closures of Moonee Ponds Creek trail to facilitate drainage clearing works
  - Will occur after Lloyd Street realignment works, once road is re-opened
- Overnight closures of Lloyd Street complete as of Friday 14 September
- No upcoming public transport impacts



# ENVIRONMENTAL MANAGEMENT



# ENVIRONMENTAL MODELLING AND ANTICIPATED IMPACTS

Upcoming out of hours works:

- Station box excavation and strutting: **6pm to 10pm** (Monday to Friday)
- Installation of strutting: **10pm – 7am** (Monday to Friday)

Noise mitigation:

- All access through Arden Street gates after 6pm
- At source mitigation (noise mats)
- Monitoring to validate modelling
- Works notification & doorknocks
- Follow up 'health' check calls/doorknocks to directly affected stakeholders



# MITIGATION STRATEGIES – AIR QUALITY

- Water cart and street sweepers during earthworks
- Concreting of internal haulage routes & installation of rumble grids





**QUESTIONS?**



# KENSINGTON (WESTERN PORTAL) PRECINCT



# DISCUSSION ITEMS

- Integrated legacy design (CYP & RIA)



# PROGRAM



# PROGRESS UPDATE

## Ongoing activities

- Site establishment on Hobsons Road
- Site and service investigations
- Construction of turning area
- Pile guide walls
- Temporary detour route modifications
- Installation of site hoarding (southern boundary of JJ Holland Park)
- Lloyd Street temporary realignment works (cross passage 3)



# CONSTRUCTION LOOKAHEAD

## What's coming up

- Hobsons Road site preparation works
- 24-hour weekend works (NDD and Geotech) in rail corridor - From 11pm Saturday 22 September to 7am Monday 24 September
- Geotechnical testing in JJ Holland Park
- Piling (rail side)
- Gas main protection works (incl. temporary over-height vehicle detour)
- Lloyd Street ground improvement (cross passage 3)
- West Melbourne Terminal Substation ground improvement (cross passage 4)
- Piling (road side)

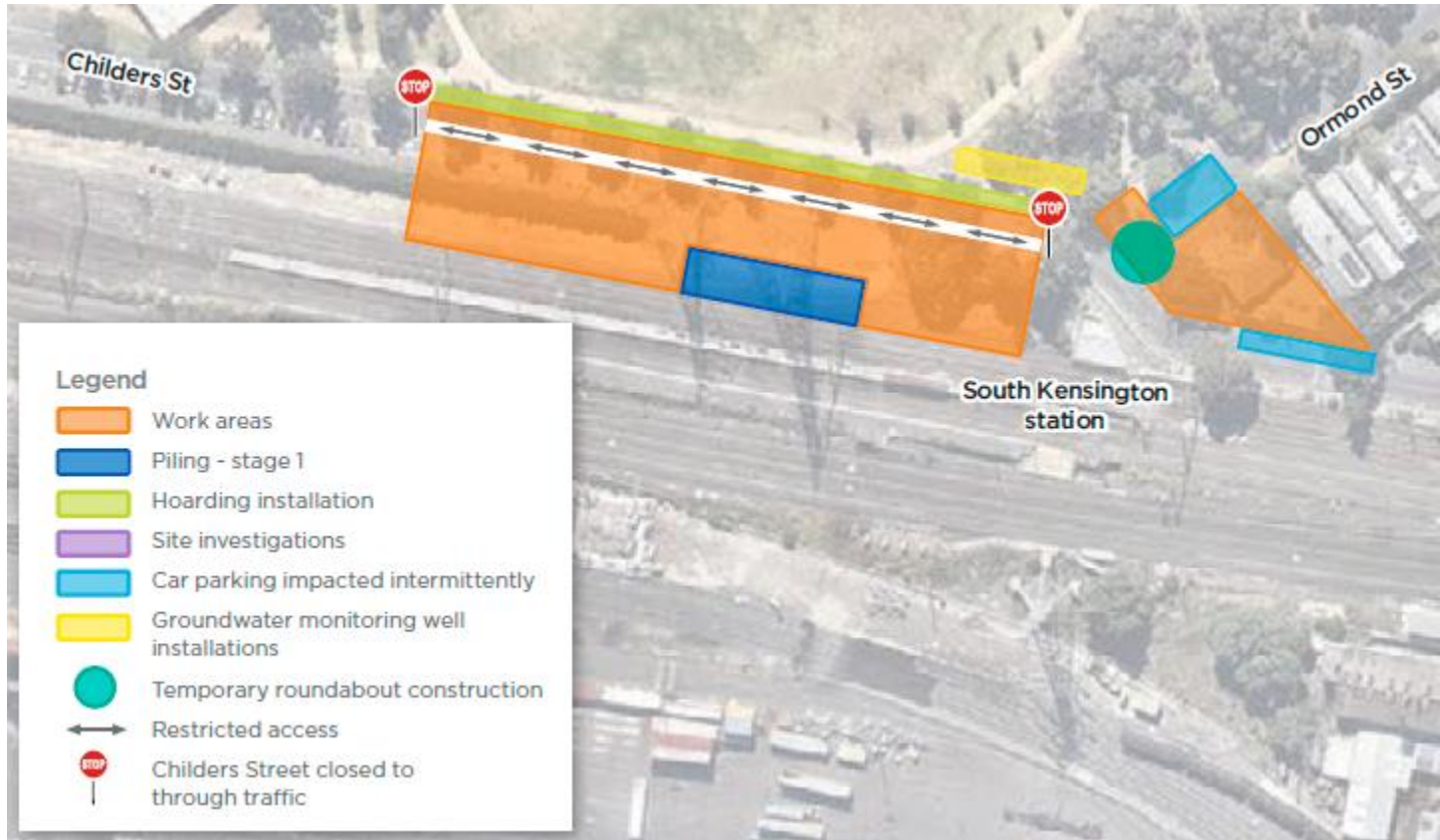
# PREPARATORY WORKS FOR DECLINE STRUCTURE

Investigations and site establishment areas





# CHILDERS STREET WORK AREA



# CONSTRUCTION PROGRAM

Activity	Aug	Sep	Oct	Nov	Dec	Jan
Construction of turning area						
Detour route modifications						
Piling (rail side)						
CP3 ground improvement						
Site and service investigations						
Hobsons Road site establishment						
Gas main protection works						
Piling (road side)						
CP4 ground improvement						
CP 1 & 2 ground improvement						

# TRAFFIC AND TRANSPORT

# TRAFFIC MANAGEMENT

- Up to five car spaces along Childers Street at a time will be occupied for NDD
- Approx. 25m of the northern lane on Childers Street will be closed. Traffic flow will be maintained, however, short holds may be required
- Adjustments to the intersection of Kensington Rd/Hobsons Rd/Childers St, Kensington
- Childers Street closed to through traffic (access maintained for LSBE over-height vehicles and local residents) – closure implemented successfully with minimal delays
- Lloyd Street temporarily realigned during CP4 ground improvement works
- Short term lane closures during detour route modification works (Kensington Road)
- Temporary over-height vehicle detour via Derby & Tennyson Streets (expected October) during gas main protection works

# TRANSPORT CHANGES

- Altona Street cyclist detour in design – construction anticipated October
- Relocation of Childers Street pedestrian crossing – expected late September
- Buses will replace trains from North Melbourne to Sunshine on the Sunbury line and from North Melbourne to Newport and Williamstown on the Werribee and Williamstown lines from 12.30am Sunday 23 September until the first service Monday 24 September
- MTM passenger comms includes: corflutes, floor decals, poster case posters, station and on-board announcements, windscreen flyers, stakeholder emails, website content (MTM, PTV, TfV, OCG, Metro Tunnel), Metro Notify app, social media

# TRANSPORT CHANGES





# ENVIRONMENTAL MANAGEMENT

# ENVIRONMENTAL MODELLING AND ANTICIPATED IMPACTS

## **Pile break back (most noise-intrusive activity)**

- Regular construction hours only (7am – 6pm, Monday to Friday and 7am – 1pm, Saturdays)
- Up to 29 residential receivers classified as 'noise affected' (65-75 dBa)
- One 'highly noise affected' (>75dBa)
- No non-residential receivers are expected to be impacted by the works





# MITIGATION STRATEGIES

## **Pile break back for rail side piling (most noise-intrusive activity)**

- Works notifications
- At source mitigation (noise mats)
- Health check phone calls/doorknocks
- Water carts and street sweepers during earthworks
- Sealing of piling platform (using adhesive spray)

# ENVIRONMENTAL MODELLING AND ANTICIPATED IMPACTS

**24-hour weekend out of hours works in rail corridor (11pm, 22 September to 7am, 24 September)**

Site and service investigations:

- Non-destructive digging (NDD)
- Geotechnical testing

Machine	L90 Noise (90% of time)	Max Noise
NDD Truck x 2	94	97
Hi Rail Excavator	63	83
Light Tower	62	66
Drill Rig (1 x CPT)	82	91
Drill Rig (1 x Borehole Rig)	82	91



# MITIGATION STRATEGIES

## **24-hour weekend out of hours works in rail corridor (11pm, 22 September to 7am, 24 September)**

- Works notifications
- Where possible noisy works will be scheduled during the day
- Material deliveries prior to occupation in regular working hours
- Prestart location and site sheds located as far away from residents as possible
- Nearby residents will be doorknocked and mitigations measures will be offered

# TREE REMOVAL

- CYP tree removal scope complete (July 2018)
- Trimming of seven trees along detour route in advance of gas main protection works (in conjunction with City of Melbourne arborist)
- One young tree from southern end of Tennyson Street to be relocated to Royal Park. Energy absorbing bollard to be installed next to another young tree to protect it from potential impacts
- Removal of seven trees and the callistemon hedge from Childers Street and rail corridor embankment – date TBC

# TREE REMOVAL – CHILDERS STREET

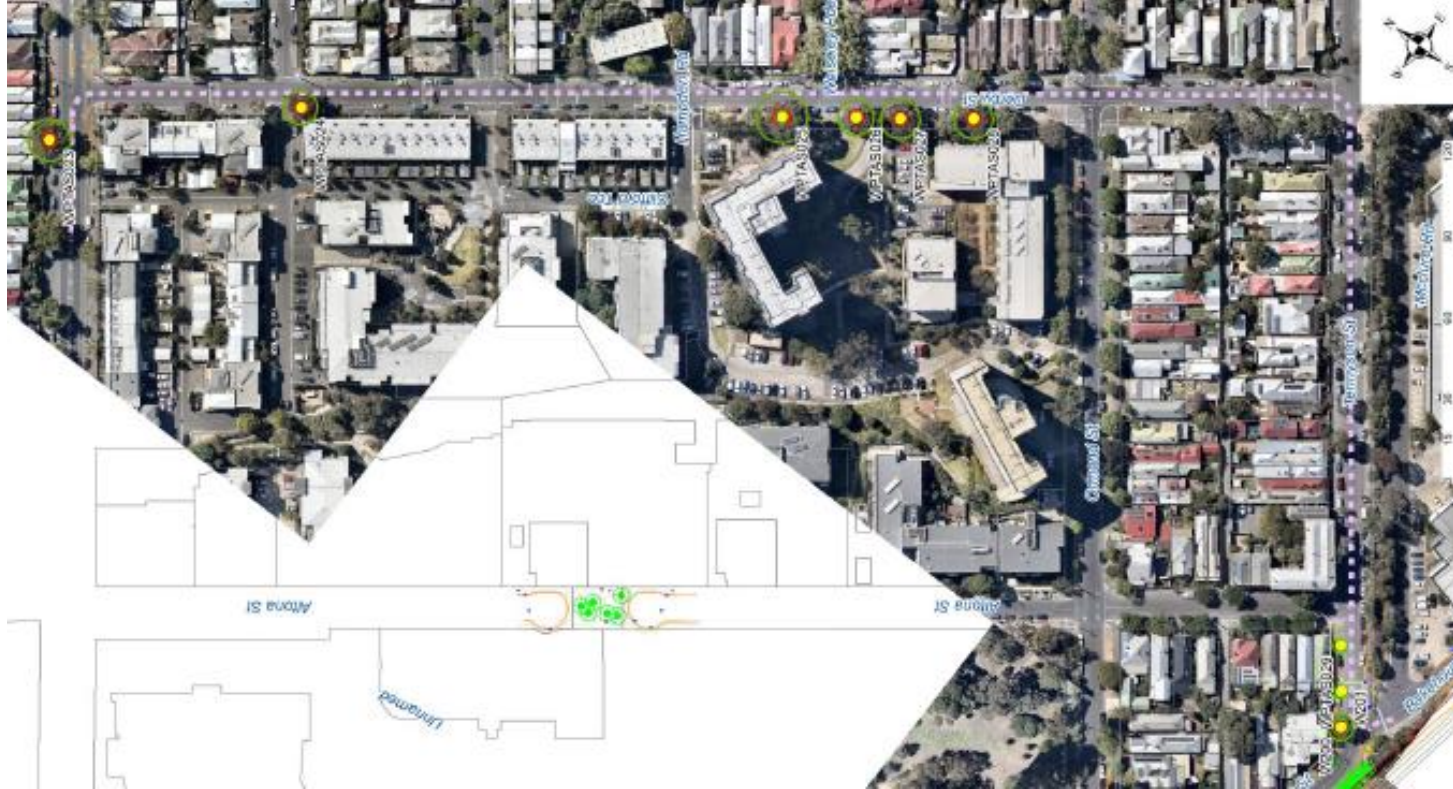


PLAN  
SCALE 1:1000



FOR INFORMATION

# TREE TRIMMING ALONG THE DETOUR ROUTE





# COMMUNITY UPDATE



## IN THE COMMUNITY

- Local community/stakeholder feedback into Derby Street detour traffic management plans
- Provision of school crossing supervisor for Derby Street during detour periods
- Information sessions with KCCC (for parents and children)
- Hoarding creative program – Flem-Ken Festival of Arts and Ideas





# RIA EARLY WORKS PLAN

## **Public display**

- 48,000 interactions (face-to-face, online & letters)
- 73 community submissions
- Key feedback included management of construction impacts such as traffic changes, noise and dust, and coordination between CYP & RIA

## **Next steps**

- Early Works Plan updated and submitted for approval
- Ministerial approval anticipated late September



**QUESTIONS?**



**Western Portal**

South Kensington

**North Melbourne**

**Parkville**

The existing 'North Melbourne' station will be renamed West Melbourne.

West Melbourne

Melbourne Central

Flagstaff

Southern Cross

Flinders Street

**State Library**

Parliament

**Town Hall**

Richmond

**Anzac**

South Yarra

**Eastern Portal**

Sunbury Line

Cranbourne / Pakenham Line