



SOUTH YARRA (EASTERN PORTAL) PRECINCT COMMUNITY REFERENCE GROUP

26 MARCH 2019



PROGRAM

PROGRESS UPDATE

Completed activities

- Temporary retaining structure – adjacent underground 66kV
- Excavation to the lower level – Osborne Street
- Installation of containment, safety fencing and hoarding
- Piling – Arthur Street



View towards Chapel Street from William Street Bridge

PROGRESS UPDATE

Ongoing activities

- Piling to construct the TBM retrieval shaft in Osborne Street – please note extended work hours until Thursday, 18 April
 - Monday to Friday 7am to 10pm
 - Saturday 7am to 6pm
- Piling works in William Street – 24/7 until Wednesday, 24 April
- Upgrading Arthur and Chapel street intersection
- Constructing access ramp from Arthur Street reserve into rail corridor

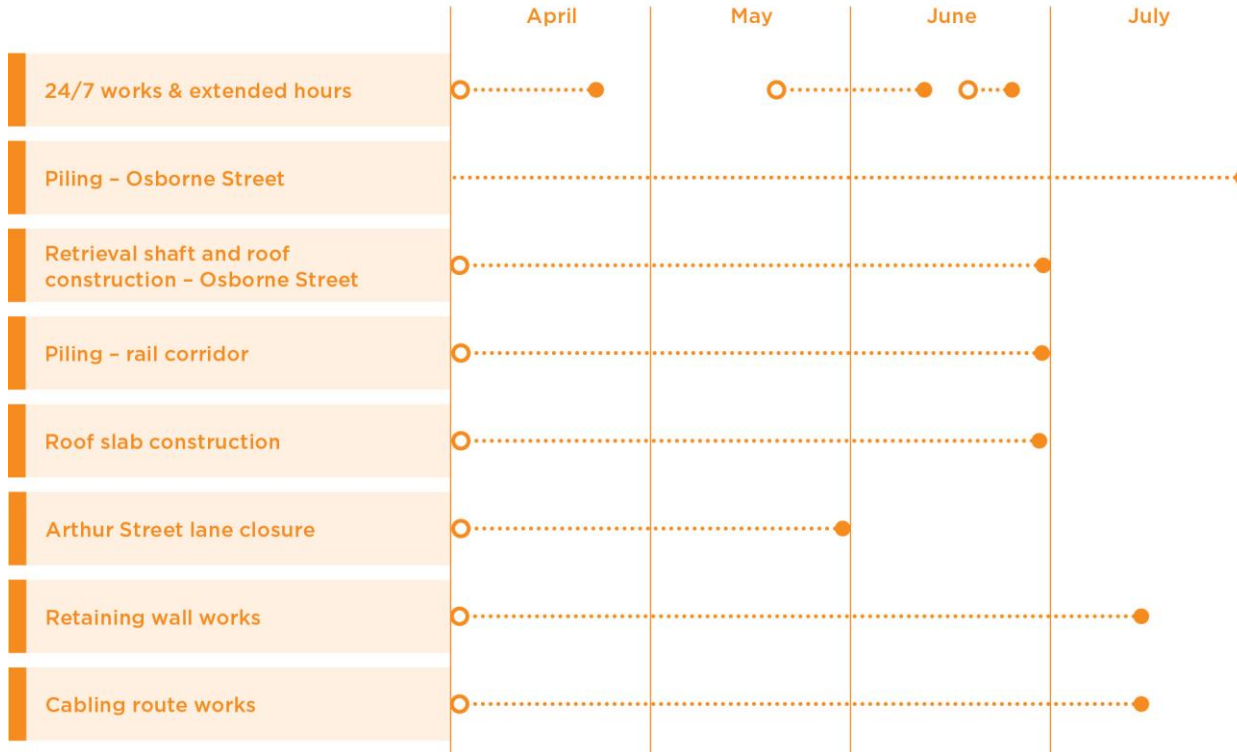


CONSTRUCTION LOOKAHEAD

What's coming up

- Pile break back
- Osborne Street site shut down – Thursday 18 to Sunday 28 April
- Extensive 24/7 works while the Cranbourne / Pakenham and Frankston lines are closed – Saturday 6 to Wednesday 24 April
- Piling & retaining wall construction along both sides of the Cranbourne / Pakenham and Frankston corridor

CONSTRUCTION PROGRAM



24/7 WORKS & RAIL SHUTDOWN



WORKS OVERVIEW

- Cranbourne / Pakenham & Frankston corridor
- Major 24/7 works from Saturday 6 April to Wednesday 24 April 2019
 - Signaling and cabling
 - Track works, overhead structures and wiring
 - William Street bridge demolition
 - Installation of retaining walls
 - Piling
 - Installation of stage one of the roof slab for the tunnel entrance
- Offers of temporary alternative accommodation made in late February



WORKS OVERVIEW

- Sandringham corridor
- Major 24/7 works from Saturday 18 May to Monday 10 June
 - Signalling and cabling
 - Track works, overhead structures and wiring
 - Drainage
 - Piling
 - Installation of stage two of the roof slab for the eastern tunnel entrance
- Some residents will be offered temporary alternative accommodation in early April

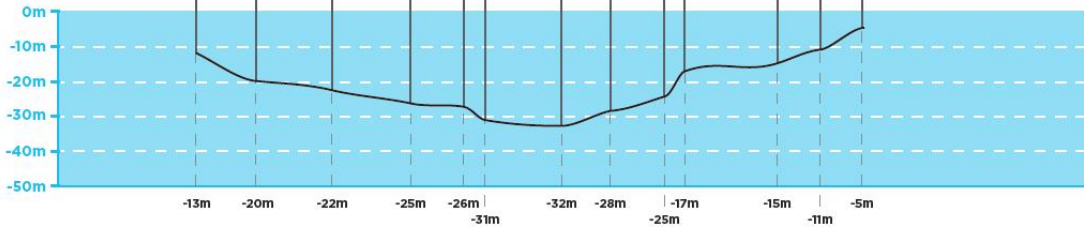
TUNNELLING ALIGNMENT

DOMAIN TO SOUTH YARRA



Depth

Surface To Top of Tunnel



COMMUNICATIONS AND ENGAGEMENT

- Connecting with residents and businesses near tunnelling activities, and the broader community
 - Visits to residents and businesses
 - Delivering information directly to residents and businesses
 - Community meetings and events to meet the Project Team and ask questions
 - Find out more via the website www.metrotunnel.vic.gov.au
 - Call the Project Team 24/7 on 1800 105 105
 - Visit the Project Team @ Metro Tunnel HQ, Swanston Street, Melbourne
 - Discussion at Community Reference Group (CRG) meetings



TRACK DESIGN

EASTERN PORTAL – TRACK DESIGN



EASTERN PORTAL – TRACK DESIGN

Curve radius:

Track	Current	Future
Down DNG	241m	200m
Up DNG	241m	200m
Down FKN	307/240m	209m
Up FKN	307m	217m

Operating speed:

Current: 50km/h

Future: 40km/h (Due to reduced curve radius)

EASTERN PORTAL – TRACK DESIGN

- 60kg head hardened rail with resilient fastenings – largest rail profile, increased durability and reduced maintenance on curves
- Full depth concrete sleepers at 600mm spacings – heaviest sleeper type, reduced spacing, reduced maintenance on curves
- Gauge widening – wider gauge, improves comfort, reduced maintenance on curves
- Continuously welded rail – no joints, improves comfort, reduced maintenance on curves

EASTERN PORTAL – TRACK DESIGN

- Lubrication compound – distributes grease onto rail for lubrication, reduced noise and maintenance on curves
- William Street bridge – single span bridge replaces existing double span bridge improving sighting distance around curves
- 1 in 15 turnouts – high speed turnouts for interface between surface tracks and Metro Tunnel

EASTERN PORTAL – TRACK DESIGN



TRAFFIC AND TRANSPORT

TRAFFIC CHANGES

- Arthur Street intermittently reduced to a single lane until end May
- Upgraded intersection at Arthur and Chapel in use from Thursday 28 March
 - tram stop will be relocated 20m south
 - signalised pedestrian crossing and traffic lights at Arthur Street
- William, Oxford and Bond streets will be closed to through traffic, and parking removed, from Friday, 5 until Thursday, 24 April
 - local access for residents to be maintained by traffic controllers
- Increased number of truck movements in April



TRANSPORT CHANGES

- Buses will replace trains on the Cranbourne/Pakenham, Frankston and Sandringham lines at various dates and times through April
- Further extended disruptions of the Sandringham line in May
- Visit ptv.vic.gov.au for journey planning and service information



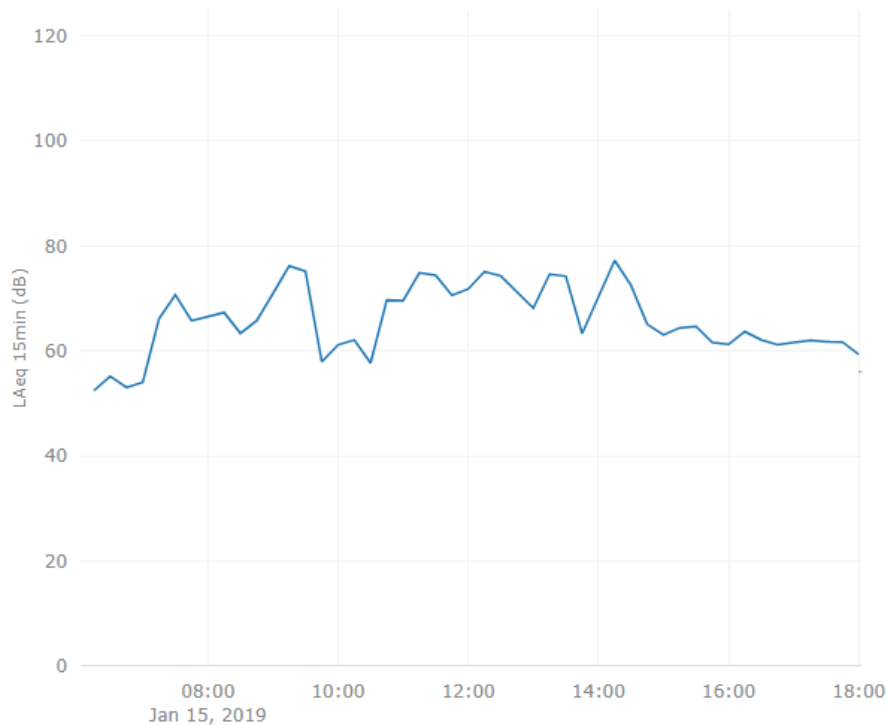
ENVIRONMENTAL MANAGEMENT

MODELLING & MITIGATION STRATEGIES

- Proactive relocation and respite offers as per *Residential Impact Mitigation Guidelines*
- Noise mats on generators and other equipment
- Noisy works scheduled during the day wherever possible
- All machines and trucks fitted with broadband reversing alarms (squawkers)
- Shotcreting of excavated areas
- All loads covered into and out of site
- Water cart for dust suppression
- Street sweeper for dust removal

NOISE MONITORING - JANUARY

DEVICE DATA



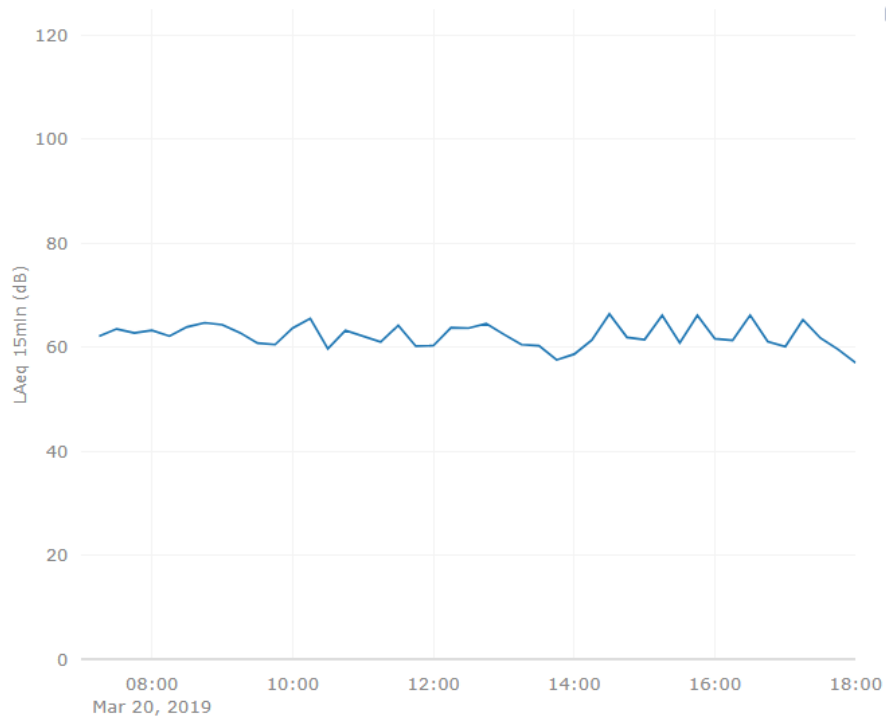
Osborne Street

Activity: Bored Piling

Example date: January 15th

NOISE MONITORING - MARCH

DEVICE DATA



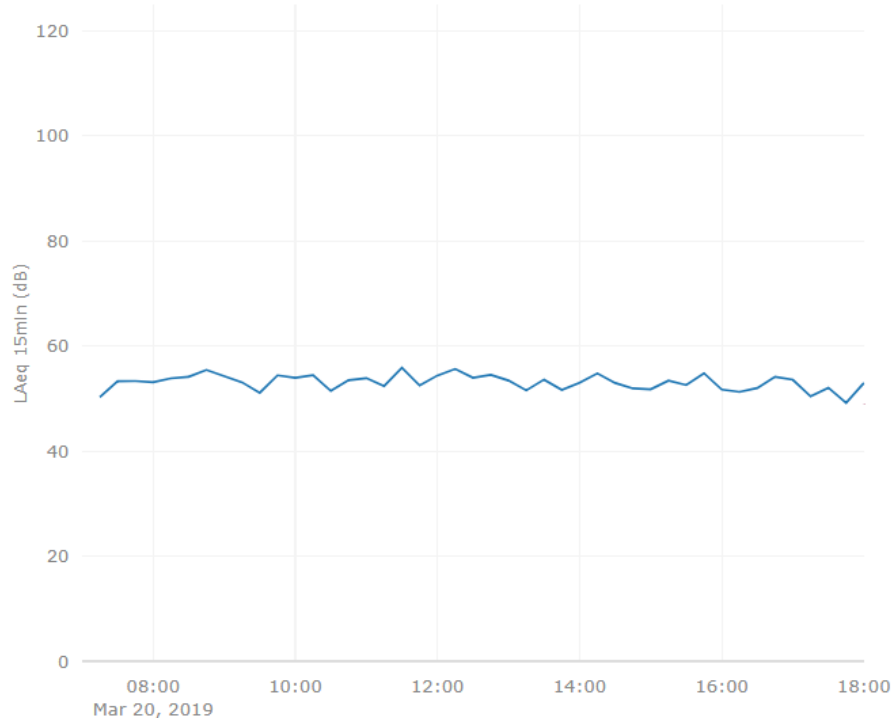
Osborne Street

Activity: **CFA Piling (Lower Level)**

Example date: March 20th

NOISE MONITORING - MARCH

DEVICE DATA

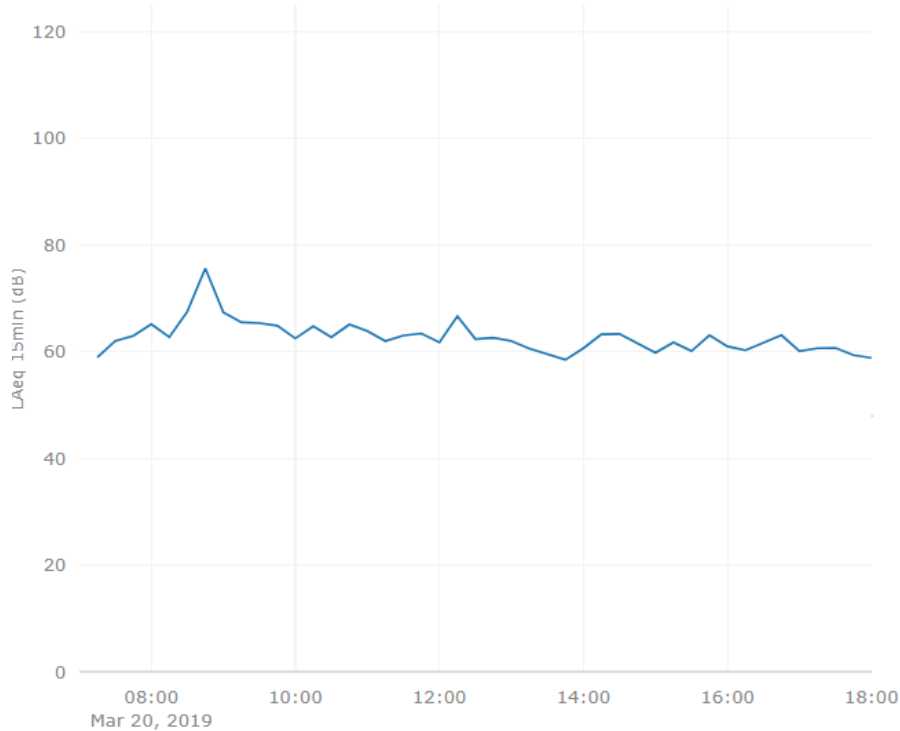


Arthur Street

Activity: **CFA Piling (Lower Level)**

Example date: March 20th

NOISE MONITORING - MARCH



William Street

Activity: **CFA Piling (Lower Level)**

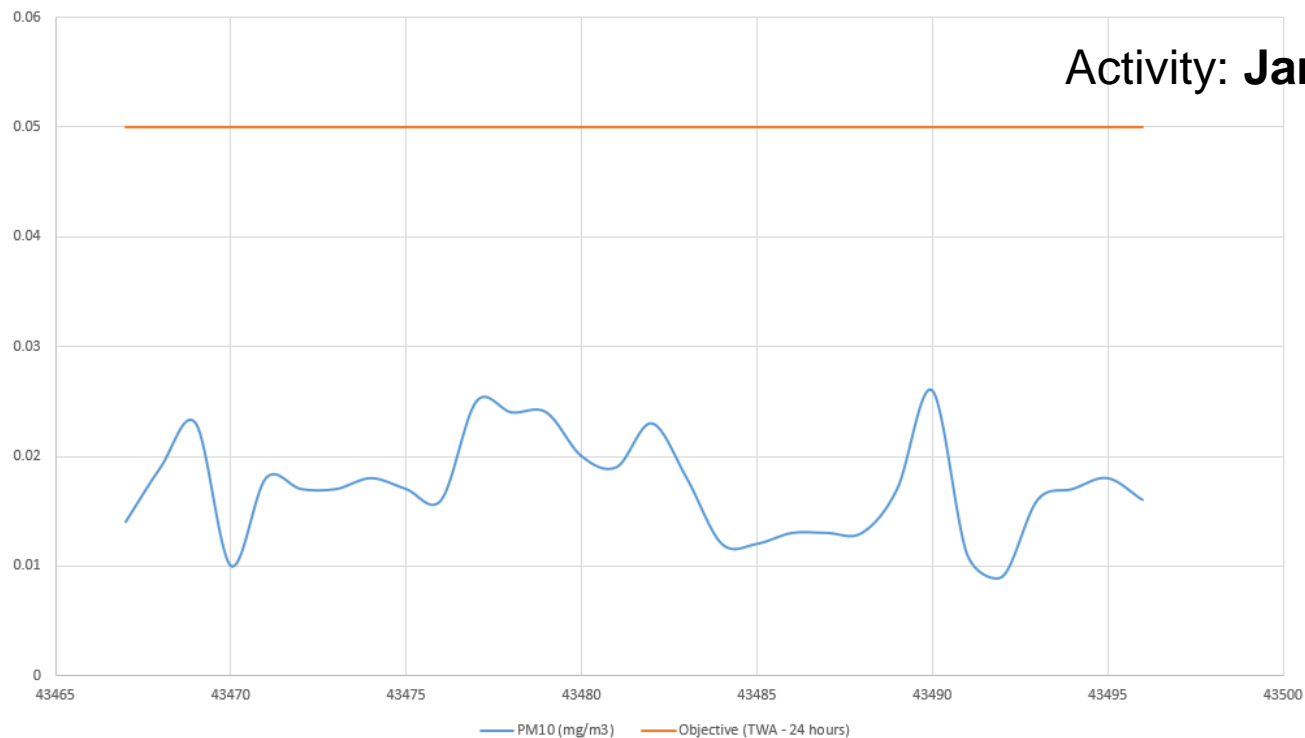
Example date: March 20th

DUST MONITORING

RIA Dust Track Monitoring - Jan

William Street & Arthur Street

Activity: **January occupation**





RIA EASTERN PORTAL DEVELOPMENT PLAN



CONSULTATION SUMMARY

- 53 submissions
- Strong support for the proposed Siding Reserve design
- Concerns about
 - hard materials used on the Promenade
 - need for and form of Osborne Street bridge
 - potential for graffiti on William Street bridge
- Questions about
 - making shared user paths separate
 - wall height of Lovers Walk

NEXT STEPS

- RIA will respond directly to all submissions during April
- Consultation summary report and updated development plan to be submitted to the Minister for Planning in late April
 - anticipated Ministerial approval in mid-2019
- Post-approval, RIA to provide summary of any key updates to the Development Plan and explain how submission feedback has been considered
 - detailed responses will be provided to those who made detailed submissions
- RIA, CYP and RPV will continue to engage with the local community and stakeholders as detailed designs are progressed



QUESTIONS?



Western Portal

North Melbourne

Parkville

State Library

Town Hall

Anzac

Eastern Portal

The existing 'North Melbourne' station will be renamed West Melbourne.

South Kensington

West Melbourne

Melbourne Central

Flagstaff

Southern Cross

Flinders Street

Parliament

Richmond

South Yarra

Carabourne / Pakenham Line