



SOUTH YARRA COMMUNITY REFERENCE GROUP

Meeting #6

Tuesday 28 August 2018, Punt Hill Apartments



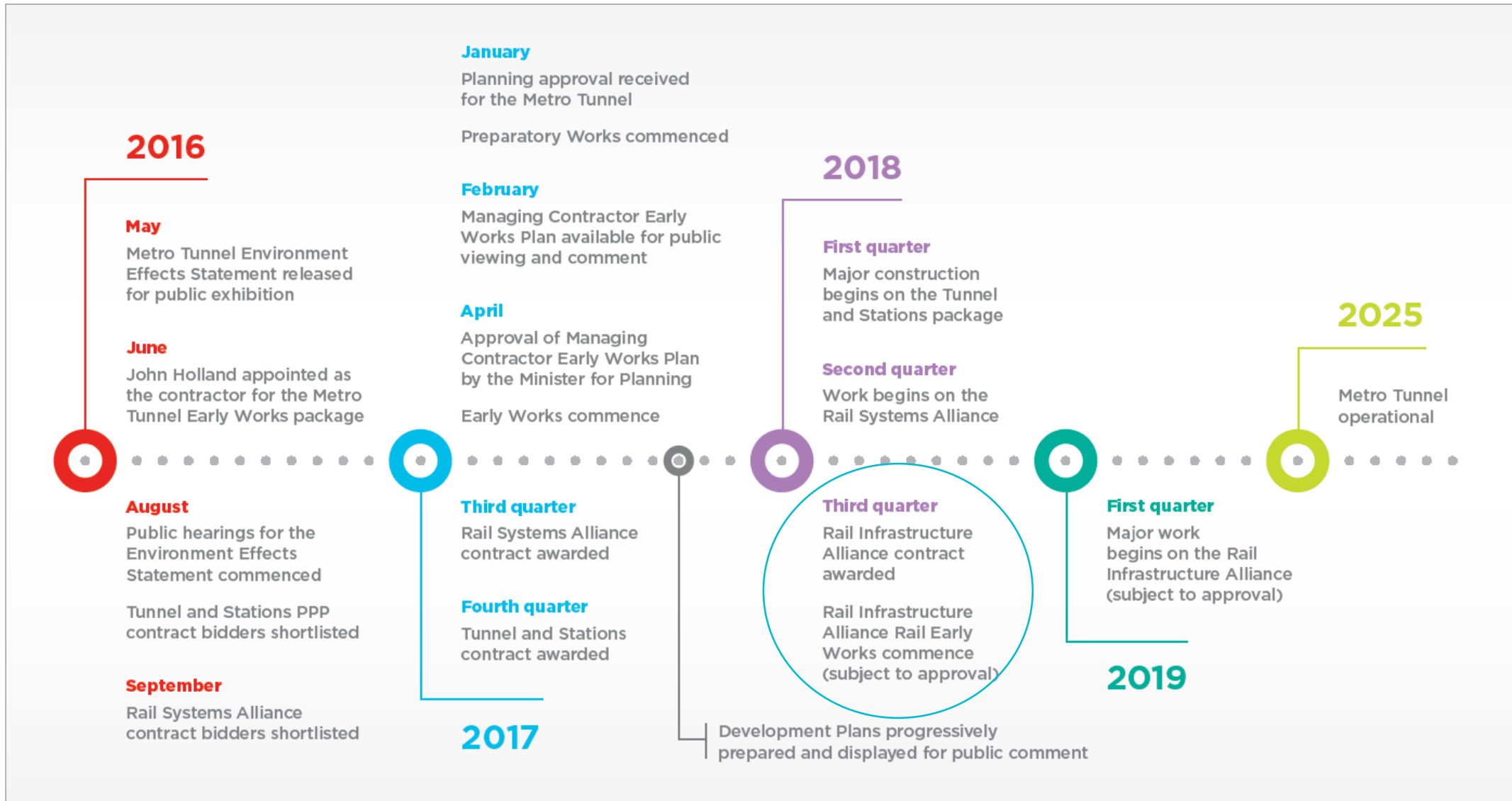
INTRODUCTION



RAIL INFRASTRUCTURE ALLIANCE

SEPTEMBER UPDATE

PROCUREMENT UPDATE



RIA – KEY TIMINGS

Milestone	Timing
Preferred construction proponent announced (Consortium consisting of John Holland, CBP Contractors and AECOM)	16 July 2018
Early Works Plan public exhibition	23 July – 10 August 2018
Commencement of preparatory / enabling works	Mid- August to mid-September 2018
Anticipated Ministerial approval of Early Works Plan	Late September 2018
Contract Award	Third / fourth quarter 2018
Commencement of Early Works (post Plan approval)	Fourth quarter 2018

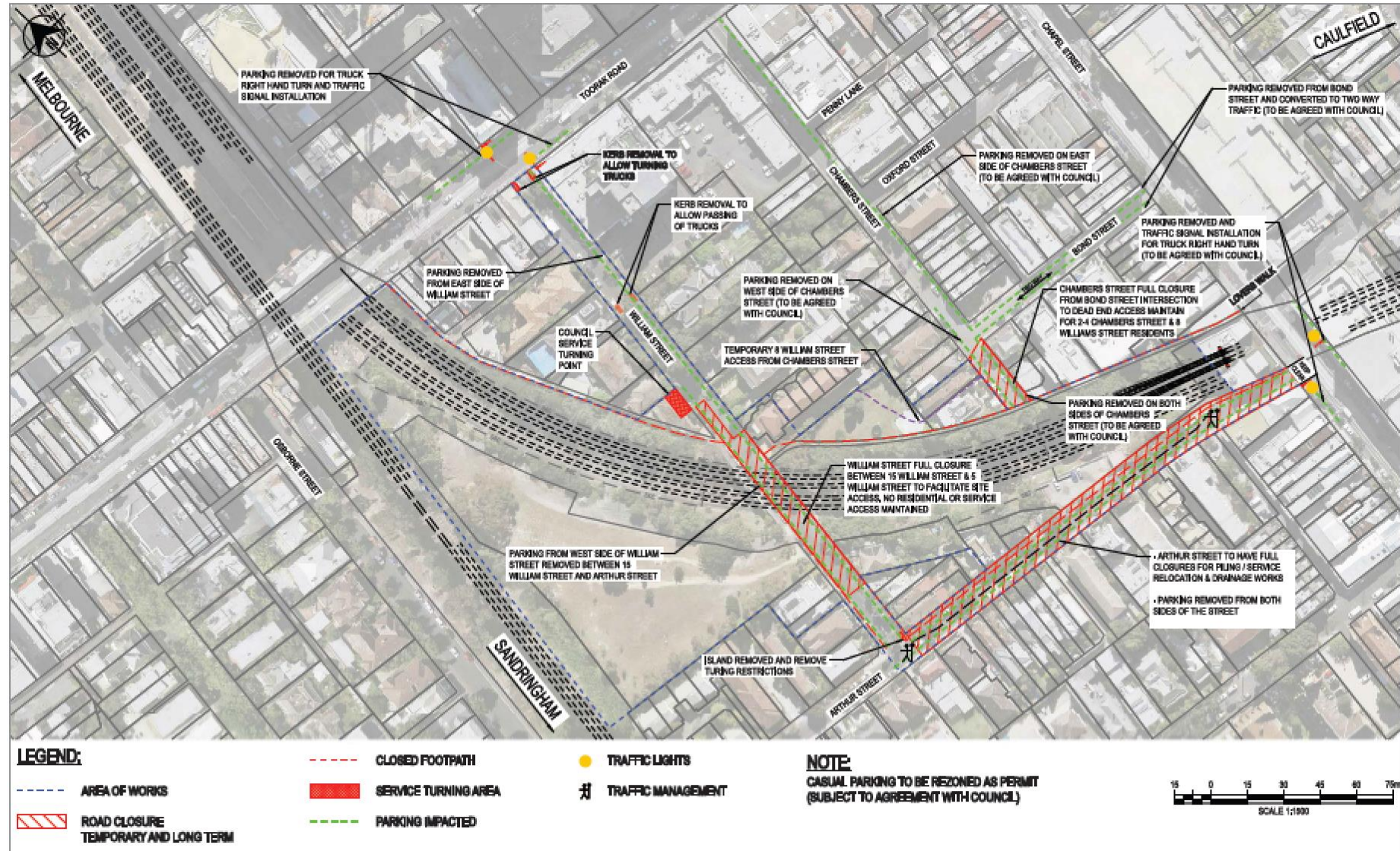
RIA PREPARATORY WORKS

- Site investigations in William and Arthur Streets underway
- Site investigations to shortly commence in Chambers Street
- Geotech investigations and Geotech underway in the Siding Reserve and within the rail corridor
- All will continue in September



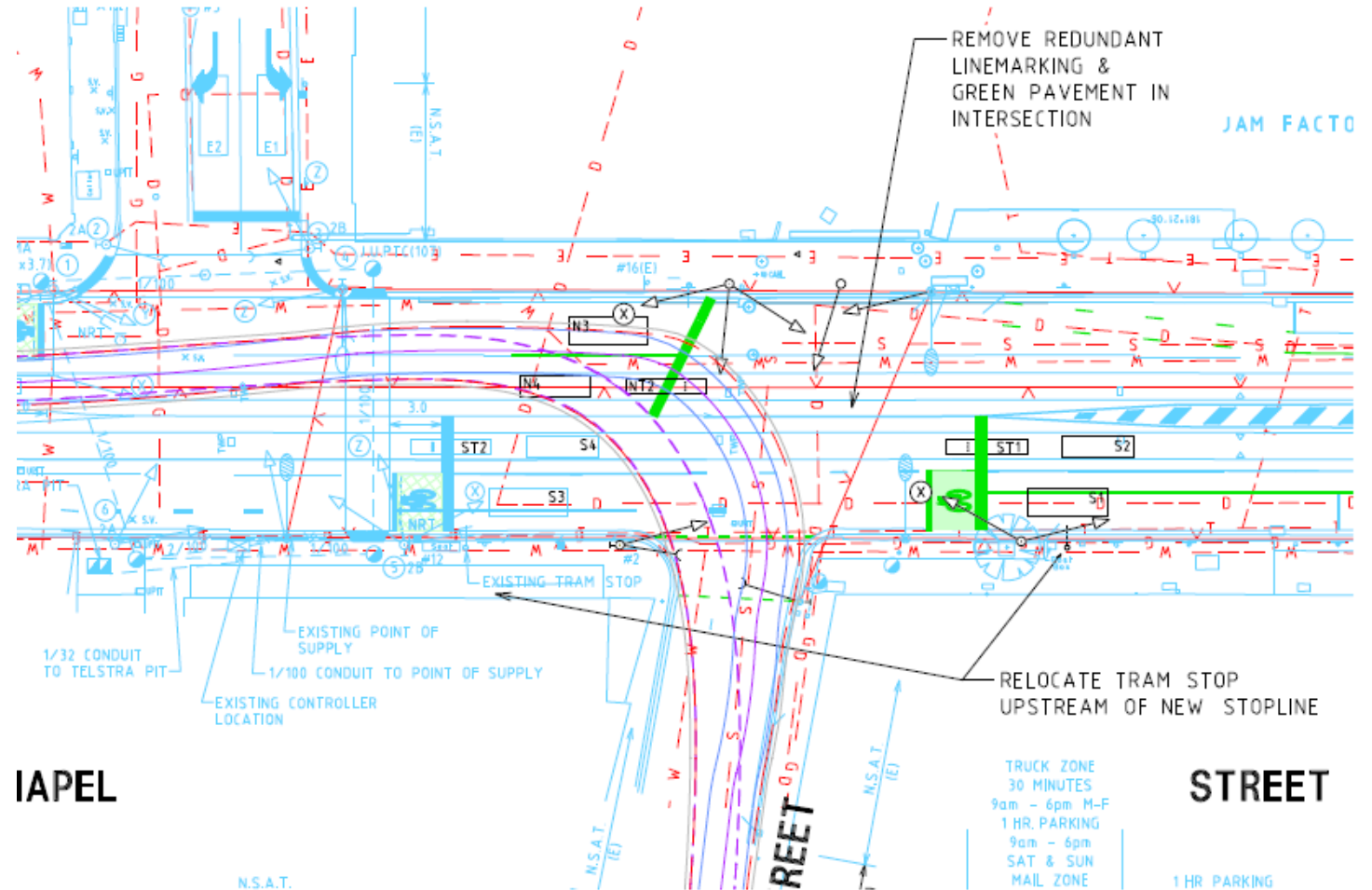
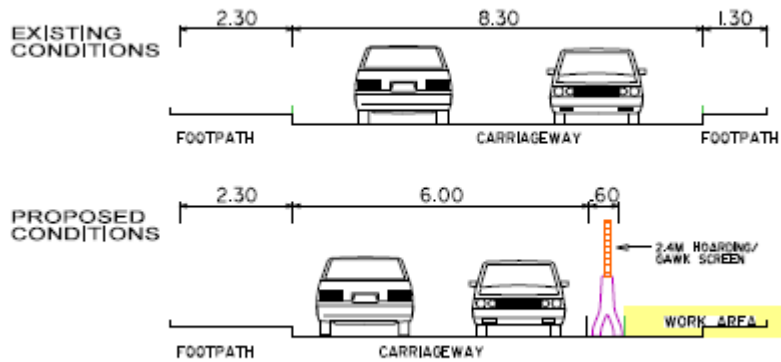
RIA EARLY WORKS TRAFFIC PLAN

- Closure of Siding Reserve – late September
- Impacts to on-street parking on Arthur, William and Chambers Streets – early October
- Closure of William Street bridge – mid October
- Closure of Lovers Walk – mid October



RIA EARLY WORKS TRAFFIC PLAN – ARTHUR STREET

CROSS SECTION - ARTHUR STREET



PROPOSED UPCOMING COMMUNICATIONS ACTIVITIES

- Letterbox drops informing residents of all upcoming traffic and pedestrian changes
- Letter handout during first days of Lovers Walk closure
- Possible wayfinding decals and signs for William Street bridge, Lovers Walk and South Yarra Siding Reserve
- Parking survey for residents along Arthur, William, Chambers and Bond Streets



PARKING IN WILLIAM, ARTHUR, CHAMBERS AND BOND STREETS

Construction of the Metro Tunnel eastern tunnel entrance is commencing in South Yarra soon, and there will be some changes to parking in the local area. To inform our planning for these works, we are seeking feedback on how parking is used in the local area.

Your answers will help inform how we manage impacts on casual and permit parking spaces along William, Arthur, Chambers and Bond streets during construction.

For more information please contact the Metro Tunnel Project Information Line on 1800 105 105 (press 2 and follow the prompts).

Please complete this questionnaire and return your feedback using the return slip attached or via email to metrotunnel@railprojects.vic.gov.au by 7 September 2018.

1. What is your address?

We need this information to ensure we understand your individual parking requirements. Rail Projects Victoria is committed to protecting your privacy. For more information, please see our privacy statement at <https://metrotunnel.vic.gov.au/privacy-statement>.

2. How many cars are there in your household? Please circle.

1 2 3 4 5 6 7

3. Do you have private parking available on your premises?

NO YES If YES, how many:

4. Do you have parking permits allocated to your household?

NO YES If YES, how many:

5. Do you, or anyone in your household hold a disabled persons parking permit?

NO YES If YES, how many:

I have read and agree to the RPV privacy statement.



WHAT WE'VE HEARD SO FAR

- Concerns around loss of parking on Arthur, William and Chambers Street
- Noise, vibration and dust mitigation measures
- Safe management of vehicles, pedestrians and cyclists in the local area
- Sidings Reserve
- Truck movements and impacts to residential access
- Interest in construction program and methodologies



QUESTIONS



CROSS YARRA PARTNERSHIP

CREATIVE PROGRAM UPDATE



TIMEFRAMES

- **28 August:** MTCP presentation to CRG of draft concept designs for selection / feedback
- **31 August:** Concepts put online on RPV website for local residents to select preference
- **14 September:** Survey closes, preferred designer selection
- **From October:** Creative treatment rolled out along RIA site and Osborne Street site

ABOUT THE DESIGNERS

DIANNA WELLS

- Photographer, graphic designer and printmaker
- Has recently worked with lumen print photography, utilising natural flora
- Series of photographic works along the barriers
- Experienced artist
- Potential to adapt existing lumen prints or make new works using local vegetation (although this would take longer)

SPACECRAFT STUDIO

- Founded in Melbourne in 2000
- High quality contemporary artwork and design concepts; collaborations with outstanding artists, architects and designers
- Artwork and design projects exhibited and acquired for collections in Australia and overseas
- Worked with
 - NGV
 - Tiwi Design
 - Museum of Contemporary Art
 - Australian Centre for Contemporary Art
 - Tolarno Gallery
 - Heide Museum of Modern Art

CONCEPT 1 - DIANNA WELLS - LUMEN

ARTIST STATEMENT

The artwork for the Osborne Street Barriers proposal is a collection of scanned and enlarged lumen prints.

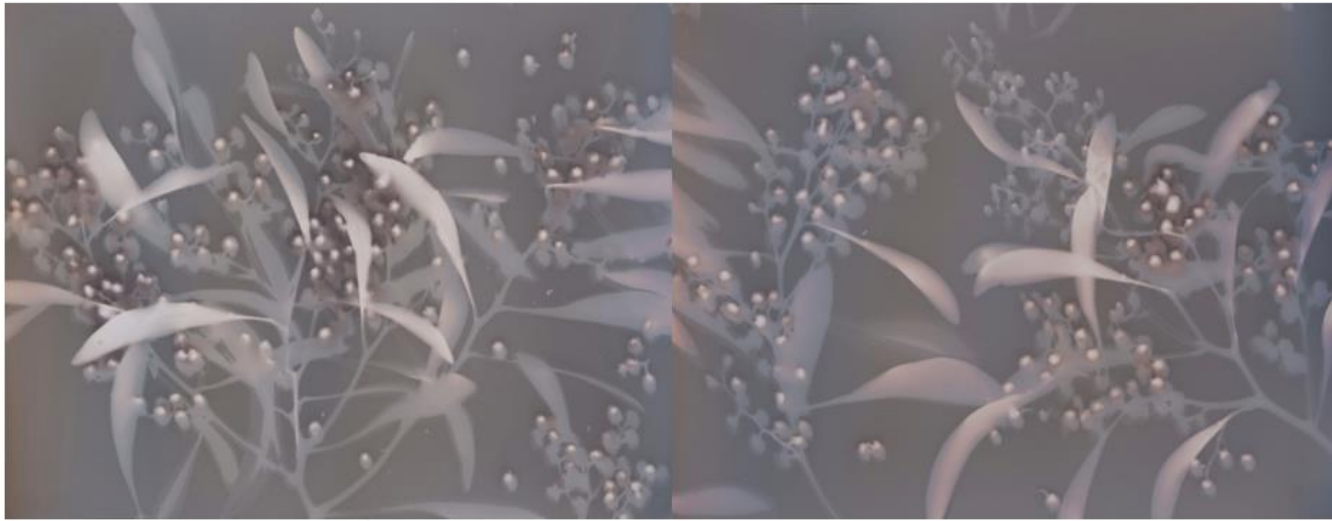
The prints explore the notion of 'the new wild' and what is contemporary wilderness? The work originated from a series titled Finding Wild, engaging with ideas about landscape, botany and 19th-century photography.

Along Melbourne's railway corridors and suburban coastal dunes, Indigenous species coexist with many invasive but benign species. In these environments both introduced and indigenous plants prevent erosion and provide habitat for birds, reptiles, insects and other animals.

I have collected samples of these introduced and indigenous species, which I used to create a set of lumen prints. This form of camera-less photography is realised by using sunlight to expose the plants onto photosensitive material and then fixing the images in a darkroom. These works reference the cyanotype prints of plant specimens created by 19th-century British artist Anna Atkins.

In this work plants such as agapanthus, golden wattle, coast spinifex and a peppercorn tree come together as they are found growing wild in Melbourne. The life cycle of the agapanthus through the seasons such as germination, growth, reproduction, pollination, and seed spreading stages has been captured on the prints from specimens collected over the period of a year.

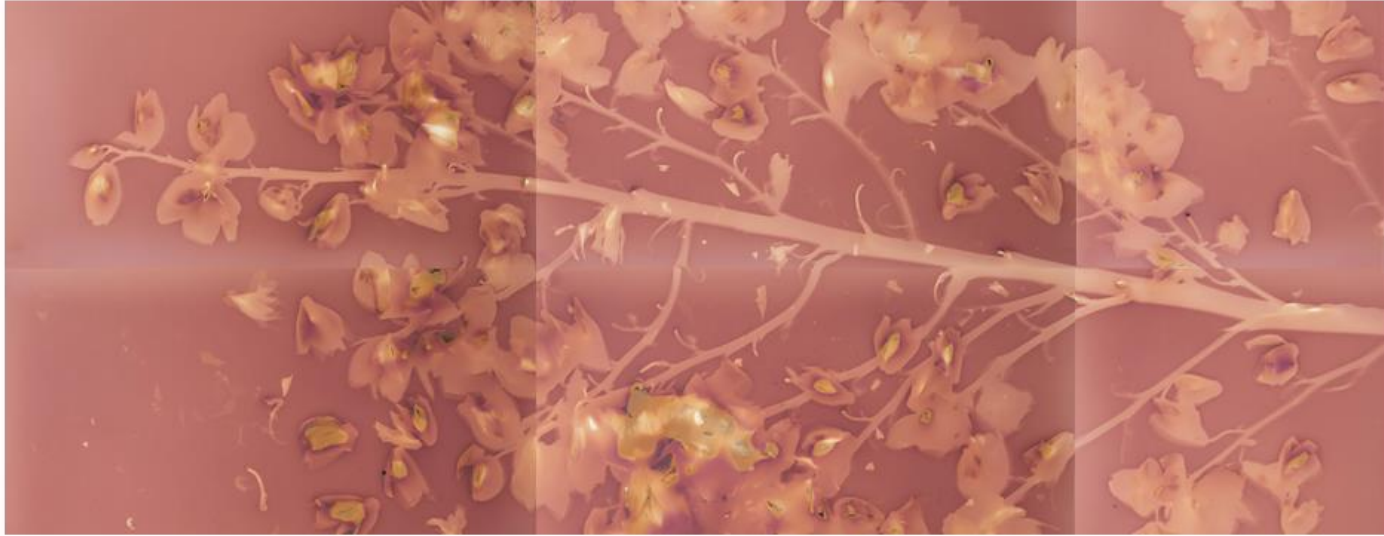
This collection combines traditional lumen printing and digital photographic processes in order to emphasise the botanical histories of the sites, inviting the viewer to look more closely at these environments, particularly those we would normally overlook.



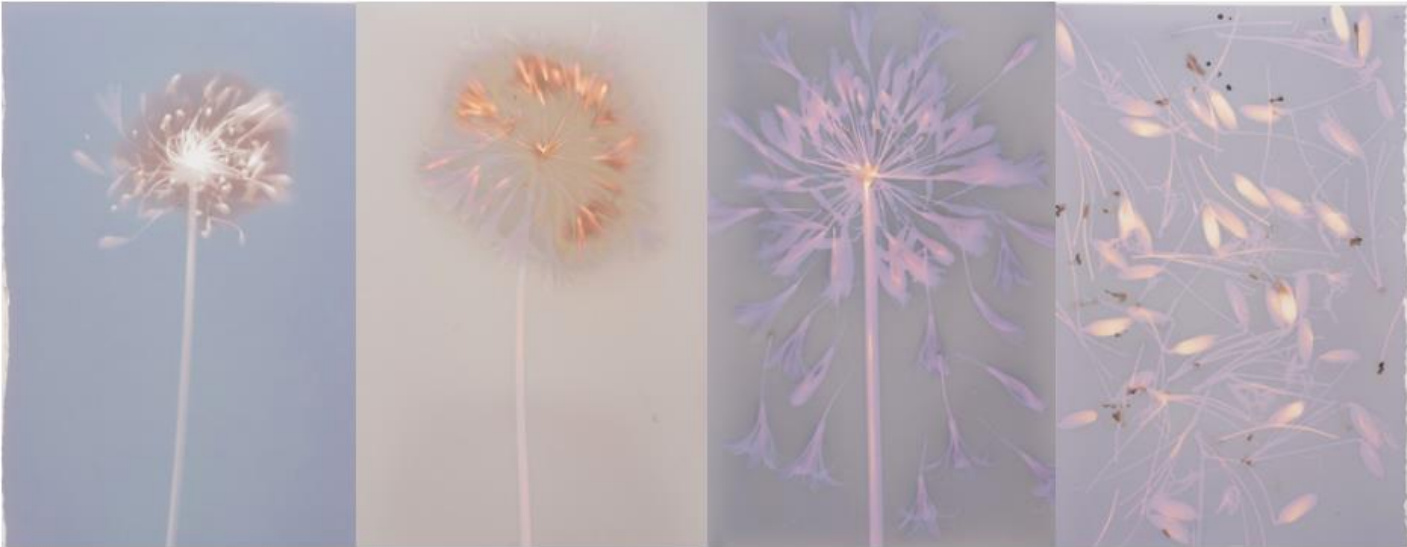
Acacia pycnantha (golden wattle)



Acacia aneura (Mulga)



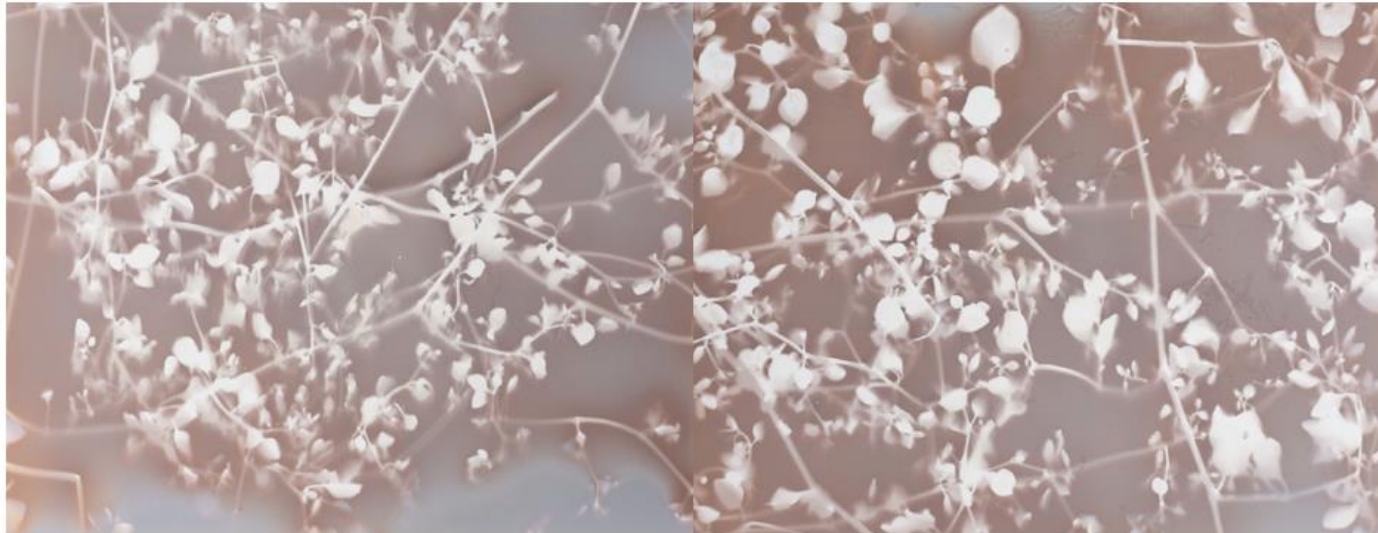
Yucca aloifolia (Dagger plant)



Agapanthus (storm cloud)



Acacia filicifolia (fern leaf wattle)



Salpichroa organifolia (pampus-lily-of-the-valley)



CONCEPT 2 – SPACECRAFT STUDIOS

ARTIST STATEMENT

The project brief reminded us of artists exploring ways to live with nature in ever denser inner cities.

We regularly work with architects and planners who are continually challenged to envisage strategies to accommodate nature on increasingly smaller footprints.

As keen ornithologists and horticulturalists we are encouraged by research that suggests native birds and animals might already be repopulating the spaces between the inner city and agricultural land.

The densification of the inner city will continue as the frontier but we're excited to see where new thinking will take us in the pursuit of living with nature.

In considering the location, the potential audiences and the parameters of the site for the artwork, we have alighted on an idea that utilises a chance graphic language from the studio.

The work we are proposing for this project invites us all to consider the rhythm of what's around us, encouraging us to find poetry and serendipity in our everyday routines.







CONCEPT 3 - SPACECRAFT

ARTIST STATEMENT

Our initial response to the location, site and audience led us to reflect on a narrative, woven around one specific botanical story.

A site of potential change.

Fennel is a Southern European native from the Apiaceae family, that can grow up to three meters high. It was introduced to Melbourne in the 1950's by migrants as a garden plant.

The plant has proven to be remarkably well adapted to our local environment, escaping the gardens to flourish until it is now categorised as an invasive, perennial herb.

Fennel is commonly found growing along railway tracks and industrial sites.

When attention is drawn to the site, other more suitable plants are then instated and the fennel moves on.

So the presence of fennel, very subtly, and with great charm, signals a site of potential change.







CROSS YARRA PARTNERSHIP

SEPTEMBER WORKS UPDATE

WORK SITE





SITE ESTABLISHMENT – RECENTLY COMPLETED WORKS

Daytime works

- Installation of site facilities - sheds and storage rooms
- Modifications to footpaths
- Covered walkways for site sheds
- Tree removal
- Sewer connection to site facilities

July occupations – overnight weekend works

- Service relocation
- Rail fence installation
- Tree removal
- Tree relocation

UPCOMING WORKS – SEPT/OCT 2018

Daytime works (7am-6pm Monday- Friday and 7am-1pm Saturday)

- Constructing a piling pad to support the piling rigs
- Removal of tree stumps, redundant services etc
- Commence piling preparation works (guide walls)
- Installing and operation of the piling rigs
- Spoil removal

Overnight Works

- Delivery of piling equipment and materials
 - Out of hours deliveries for larger equipment – VicRoads requirements
 - Connection of the fibre-optic service on Osborne Street (within site)

OSBORNE STREET FENCING

Fencing is currently 1.8m high – installed June 2018

CYP have investigated design options for a 2.4m high fence however the following issues prevent this:

Wind loading requirements

- All barriers must comply with Australian Standard AS1170
- Strict standards apply to wind loadings
- 2.4m high barriers need to either have a very wide base or be fixed into the ground

Site constraints

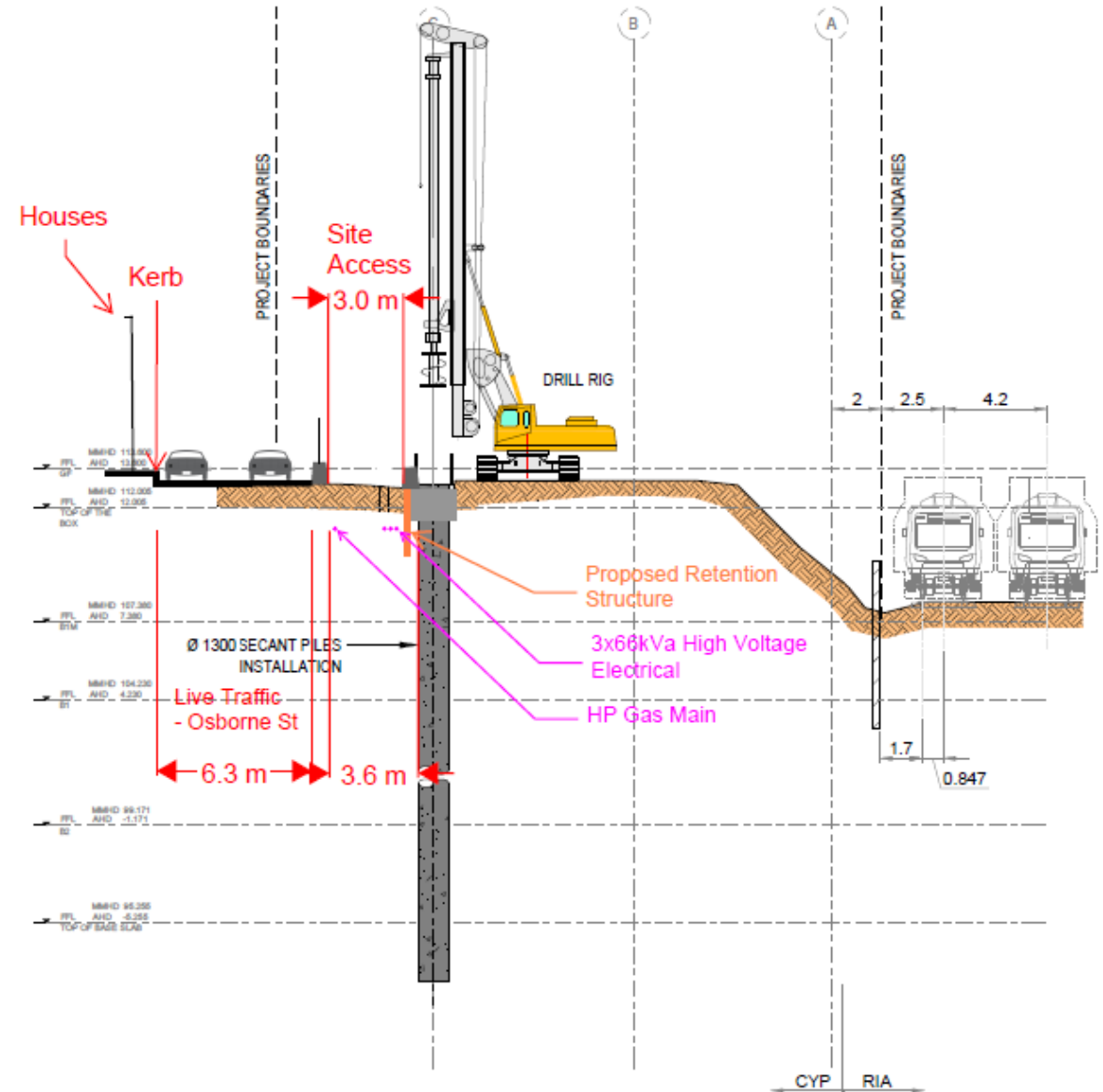
- Minimal lateral flexibility (east-west direction)
- Requires minimum 3.3 metres for a construction vehicle haul road
- Current width is 3.0m with dispensation

Underground assets

- Assets under Osborne Street that prevent footings under the fencing.
- 66kVa Electrical and gas main that run under site the fence line.

OSBORNE STREET FENCING

Site Constraints



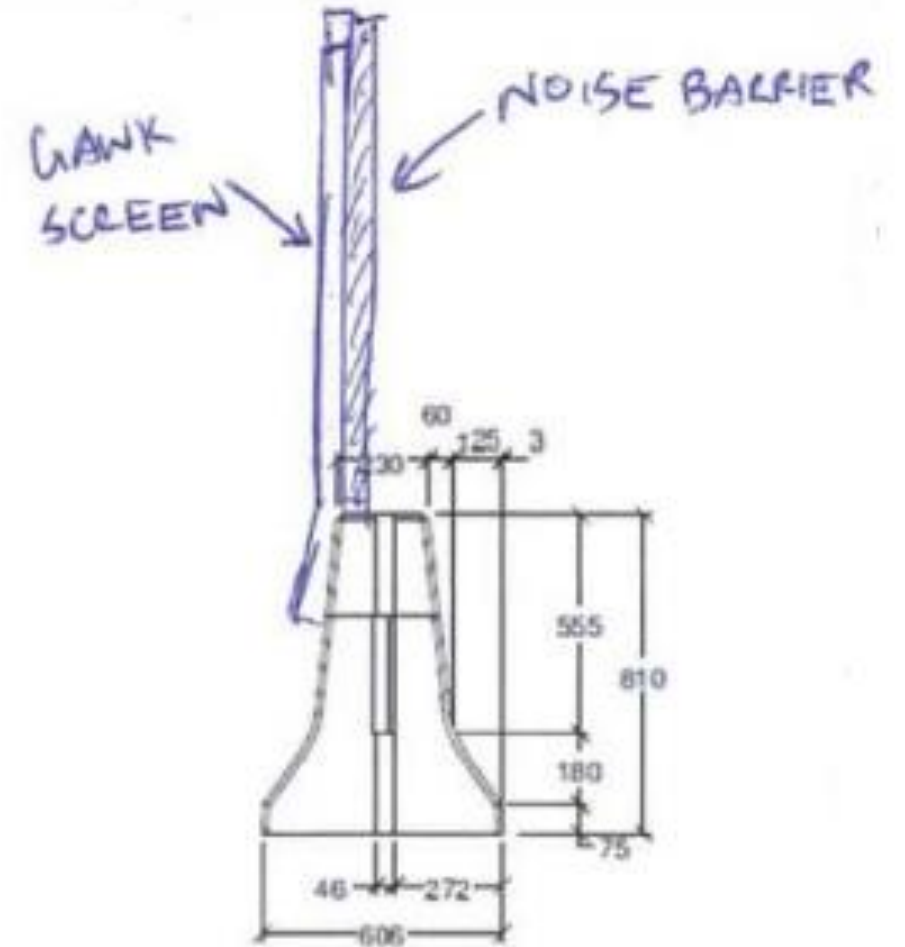
OSBORNE STREET FENCING

Current design at August 2018

- 1.8m high
- Hoarding on concrete barrier
- Creative art treatment on western residential side
- Noise barrier on eastern side

Negligible noise attenuation difference between 1.8m and 2.4m fence

OUTSIDE



END ELEVATION



WORKFORCE PARKING STRATEGY

- No parking provided on site - written into contract specifications
- No parking in local streets - written into contract specifications
- Lockers provided for overnight / weekend storage
- 24 / 7 Security monitoring
- CCTV (directed away from residents) to be installed
- Close to South Yarra station and Trams
- Covered at staff briefings
- Monitoring is carried out



ALTERNATIVE ACCOMMODATION

Noise levels

- Noise exceeds either 65dB(A) in total, or 10dB(A) above ambient level (whichever is higher)

Time and duration

- Experienced between 10pm and 7am on any day of the week
- Occurs on at least **10 days in any 15 consecutive days or 40 days in any six consecutive months**



CYP APPROACH

- Program and noise modelling identifies works where respite and relocation needs to be offered
- CYP contacts eligible residents to offer respite / relocation in advance of works.
- If you have any concerns during works, contact us via the Project Information Line 1800 105 105 (24/7)

MONITOR LOCATIONS



TRUCK VOLUMES

Works	Approximate dates	Delivery type	Details
Excavation works	August 2018 to October 2019 (5 stages)	Spoil haulage	Total Spoil: 15,500m ³ Haulage Rate: 6m ³ /truck Estimated Average Truck No: 20 trucks/day
	August 2018 to June 2019 (2 stages)	Rock supply (including general site supply)	Total recycled crushed concrete: 500m ³ Haulage Rate: 5m ³ /truck Average Truck Rate: 10 trucks/day
Piling works	September 2018 to March 2019 (2 stages)	Concrete haulage	Total Concrete: 6,850m ³ Haulage Rate: 5m ³ /truck Average Truck Rate: 10 trucks/day
		Steel haulage	Total Steel: 600t Haulage Rate: 10t/truck Average Truck Rate: 2 to 3 trucks/day
Propping / strutting	January to August 2019 (3 levels)	Steel haulage	Total Steel: 500t Haulage Rate: 10t/truck Average Truck Rate: 5 to 10 trucks/day

EASTERN PORTAL TIMELINE

Activity	Timeframe
Site establishment	Underway
Main works commence	September 2018
Shaft construction commences (including excavation)	Sept 2018 to Mid-2019
Tunnel boring machine extraction	2020
Structure completed	Late 2021
Tunnel fit out and rail completed	2021 - 2022
Testing and commissioning complete	2025



ENVIRONMENTAL MANAGEMENT

CYP Environmental Management Framework:

- Environmental Management System (EMS)
- Construction Environmental Management Plan (CEMP)
- Site Environmental Implementation Plan (SEIP)
- Construction Air Quality Impact Assessment (CAQIA)
- Construction Noise Vibration Impact Assessment (CNVIA)



QUESTIONS?