



## WORKS NOTIFICATION

### FLINDERS STREET AUGUST 2019

Major construction is continuing in the CBD at the site of the future Town Hall Station. In August, works will commence to construct an underground passenger connection underneath Flinders Street, between Swanston Street and Degraeves Street. The passenger connection will link the new Town Hall Station and Flinders Street Station.

#### What we are doing

##### **Pedestrian crossing works**

A new pedestrian crossing will be established to maintain access to tram stops on Flinders Street.

These works will include:

- Line marking
- Traffic signal relocation
- Trenching using an excavator
- Saw cutting
- Jackhammering.

##### **Service relocation works**

To enable the construction of the underground passenger connection we need to relocate services beneath Flinders Street.

These works will include:

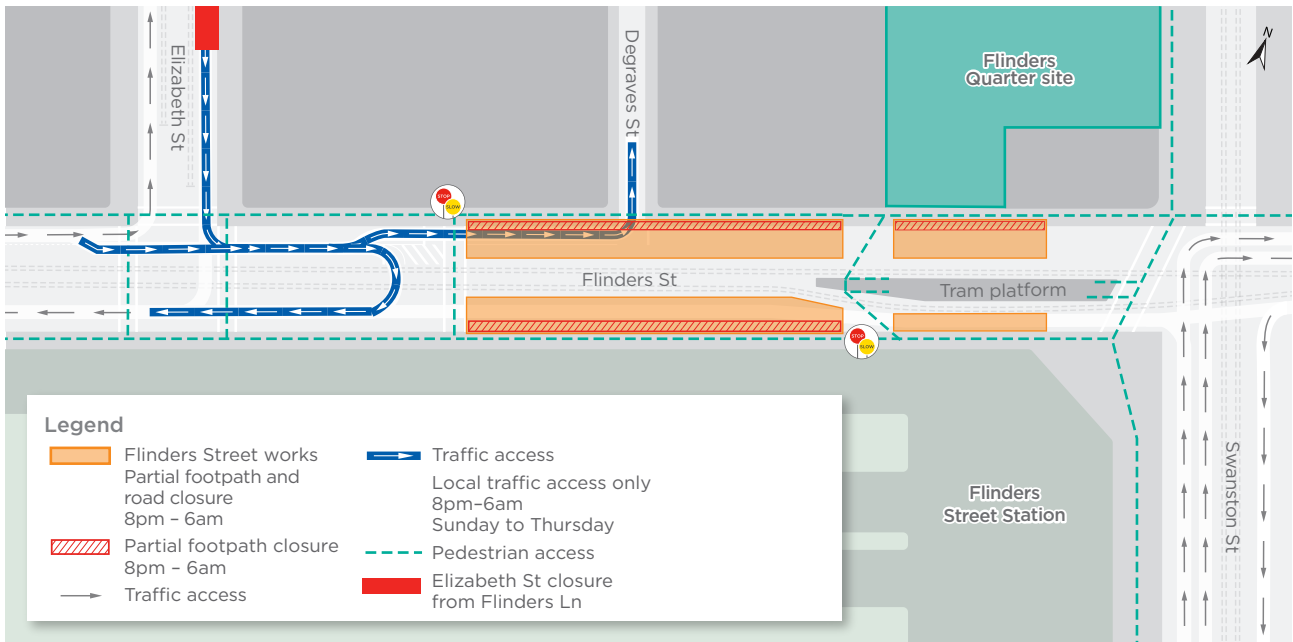
- Saw cutting
- Non-destructive digging (NDD)
- Jackhammering.

#### When

- 8pm – 6am, Thursday 1 August, Sunday to Thursday until late August 2019

#### What to be aware of

- Works that will generate moderate to high levels of noise such as jackhammering and saw cutting will occur between 8:00pm and 10:00pm Sunday to Thursday where possible
- Moderate noise level activities will take place between 10:00pm and 6:00am Sunday to Thursday
- These works will occur until late August (weather permitting).



Indicative only

### Pedestrian changes

The Flinders Street northern and southern footpath between Elizabeth and Swanston Streets will have pedestrian changes in place from 1 August.

- Between 8:00pm and 6:00am a partial footpath closure will be in place. Access will be maintained through a narrowed pedestrian walkway.

### Traffic changes

- Flinders Street will be closed in both directions between Swanston and Elizabeth Streets, from 8pm to 6am from Sunday to Thursday throughout August. Local vehicle access will be maintained for businesses and residents.

### Long-term closure

From September 2019 Flinders Street eastbound between Elizabeth and Swanston Streets will be closed for up to 3 years. Local vehicle access to Degraves Street will be maintained for businesses and residents.

### More information

To find out more about the Metro Tunnel Project and register for future email updates:

- [metrotunnel.vic.gov.au](http://metrotunnel.vic.gov.au)
- 1800 105 105 (24 hours a day, 7 days a week)  
Press 2 and follow the prompts
- [facebook.com/metrotunnel](https://facebook.com/metrotunnel)
- Subscribe to eNews or construction notification emails: [metrotunnel.vic.gov.au/subscribe](mailto:metrotunnel.vic.gov.au/subscribe)

**Interpreter Service**  
**(03) 9280 0700**

Arabic	العربية	Russian	Русский
Cantonese	廣東話	Serbian	Српски
Greek	Ελληνικά	Sinhalese	සිංහල
Italian	Italiano	Spanish	Español
Korean	한국어	Turkish	Türkçe
Macedonian	Македонски	Vietnamese	Tiếng Việt
Mandarin	普通话		

It should be noted that this information is current at the time of printing, however due to unforeseen circumstances, changes may occur. Please visit [metrotunnel.vic.gov.au](http://metrotunnel.vic.gov.au) for the latest updates.