



## DOMAIN COMMUNITY REFERENCE GROUP

---

Meeting #4

Wednesday 24 January 2018, Seasons Botanic Gardens



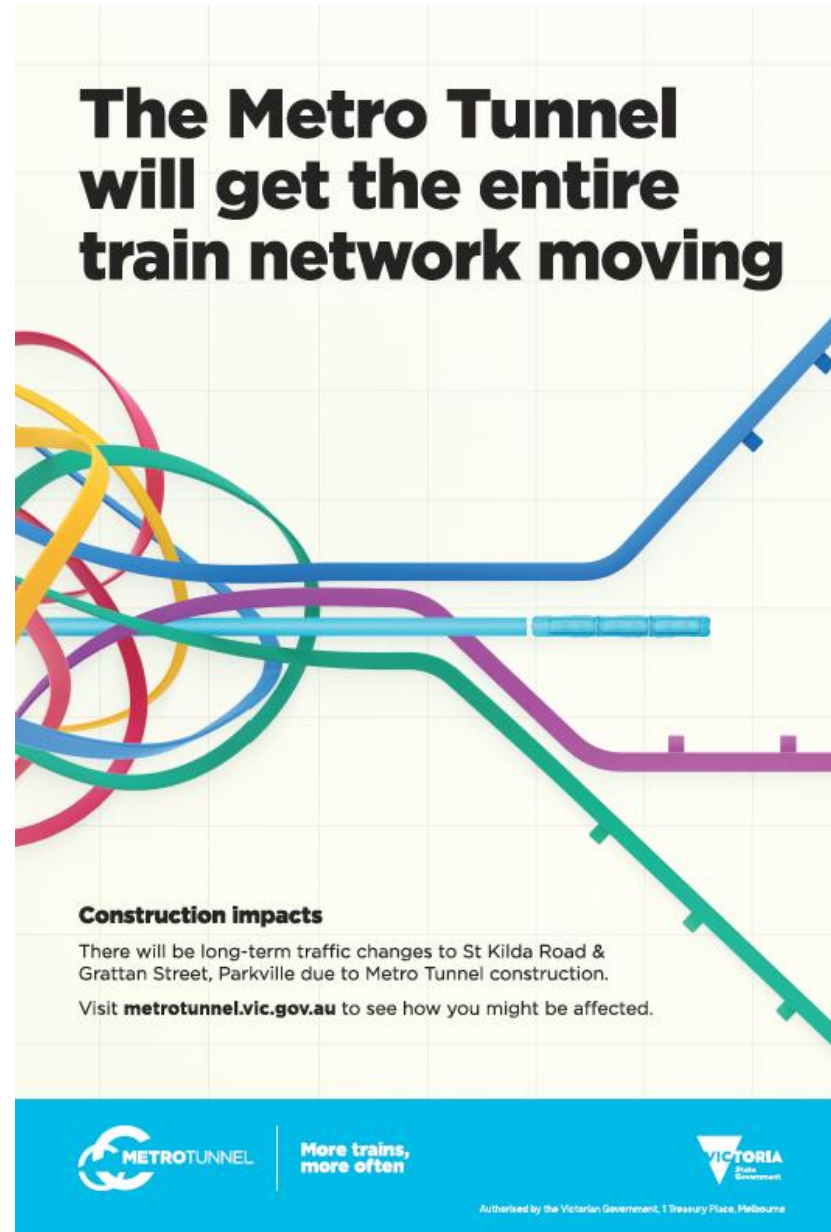


# PUBLIC COMMUNICATIONS CAMPAIGN

- Advertising campaign (TVC, radio, print, outdoor)
- VMS, signage, wayfinding
- Briefings with key stakeholders, institutions, schools, residents, businesses
- Travel Demand Management
- Pop ups on St Kilda Road, Grattan Street, Uni Orientation Day
- Metro Tunnel eNews to subscribers
- Works notifications – specific to local stakeholders
- Social media and website updates (inc on VicRoads, PTV, Yarra Trams' channels)
- Coordination with major events i.e. Grand Prix



# POSTERS AT KEY LOCATIONS



A poster with a light green background and a white grid pattern. It features colorful, overlapping lines representing train routes. The main headline is in large, bold, black text. Below it, there is a section titled 'Construction impacts' with a short paragraph and a website link. The bottom of the poster has a blue footer with logos and text.

## The Metro Tunnel will get the entire train network moving

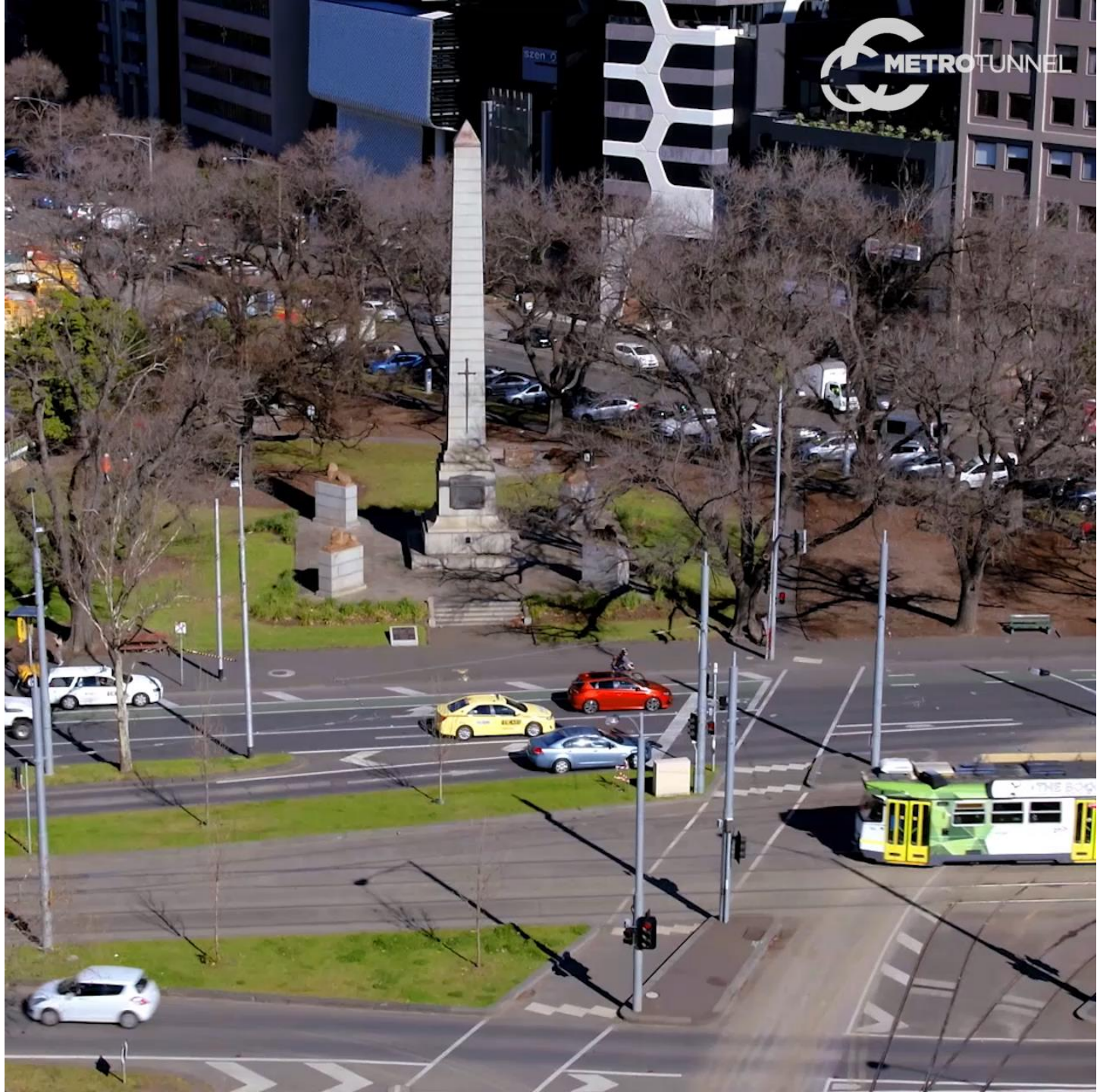
**Construction impacts**

There will be long-term traffic changes to St Kilda Road & Grattan Street, Parkville due to Metro Tunnel construction.

Visit [metrotunnel.vic.gov.au](http://metrotunnel.vic.gov.au) to see how you might be affected.

 **More trains,  
more often** 

Authorised by the Victorian Government, 1 Treasury Place, Melbourne





# JOHN HOLLAND CHANGES TO THE ROAD NETWORK (DOMAIN PRECINCT)

# METRO TUNNEL DOMAIN PRECINCT – ROAD AND NETWORK ENHANCEMENTS



- CCTV installation works will take place in early February across five locations in area
- Ongoing night/ day works on Kings Way and in South Melbourne focusing on intersection enhancements
- Upcoming asphaltting and line marking night works on Kings Way between St Kilda and the West Gate Freeway on ramp in February/ March 2018
- Moray Street bike lane enhancements in February 2018

# Beon Energy Solutions

Beon Scope of Works - Domain



# Domain Precinct - Construction Update

---

- 🔥 Construction of the temporary electrical substation is almost finished
- 🔥 Fencing is the last piece to be completed and is dependent on the CitiPower trenching for cabling into the substation
  - Trenching and cabling should be completed next week
- 🔥 Aiming to finalise all remaining civil works in the next fortnight
- 🔥 Energisation of the substation is planned for late February/early March

# Domain Precinct - Construction Update

---





# Park Street Tram Stop Relocation & Upgrade Project

*24 January 2018*

# Overview

Work zone & project scope

Works program

Improving tram infrastructure

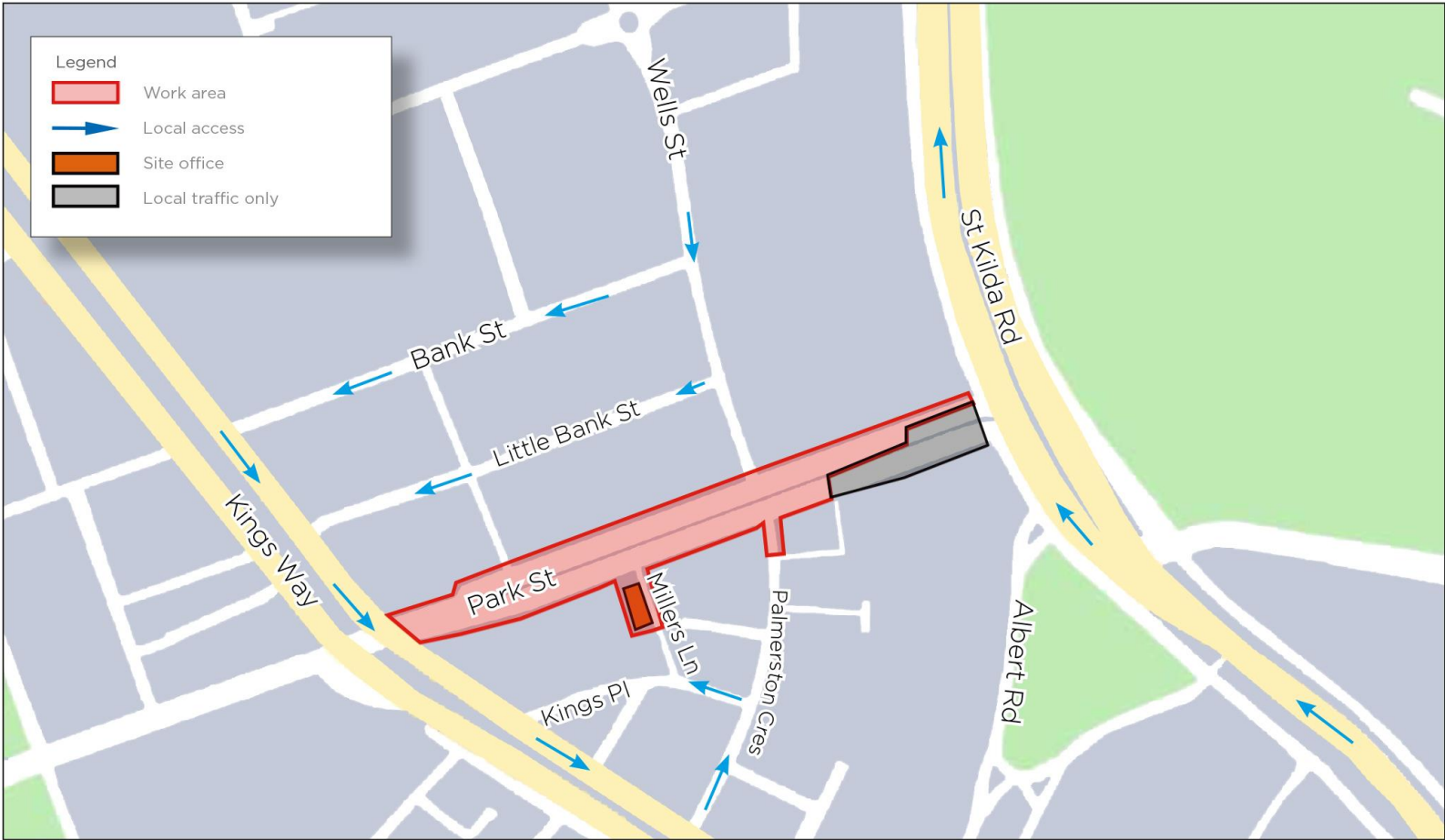
Communication activities

Questions



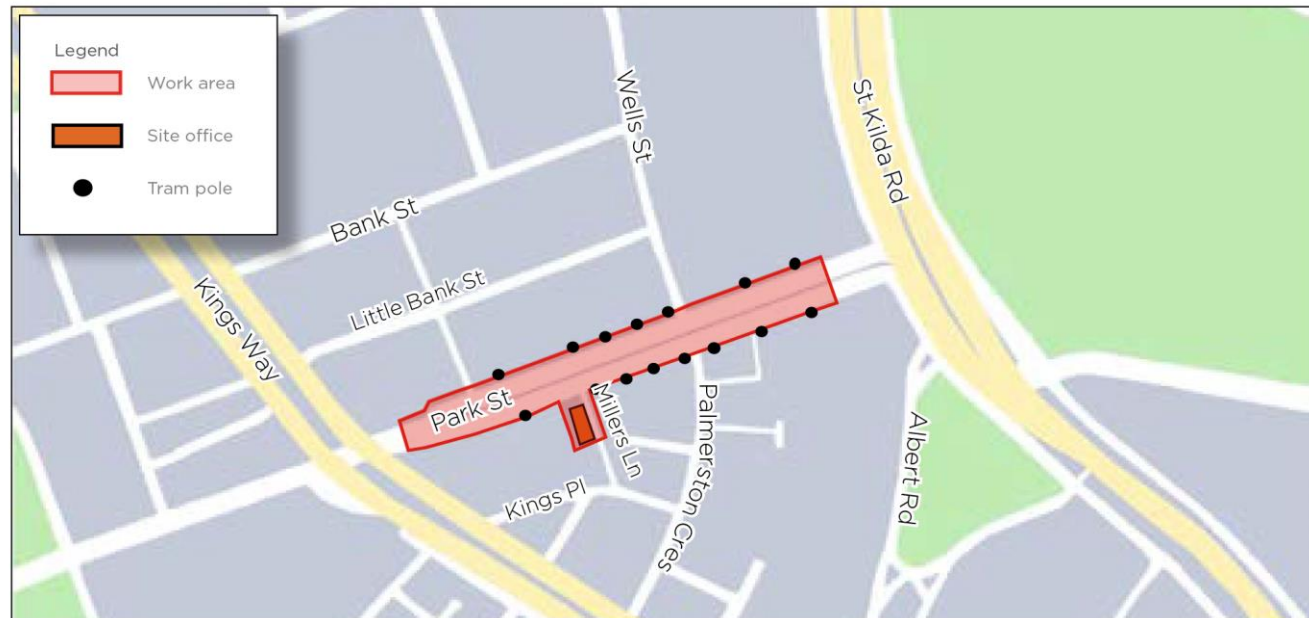
# Work zone & project scope

10pm Friday 2 – 5am Wed 7 February 2018



# Works program

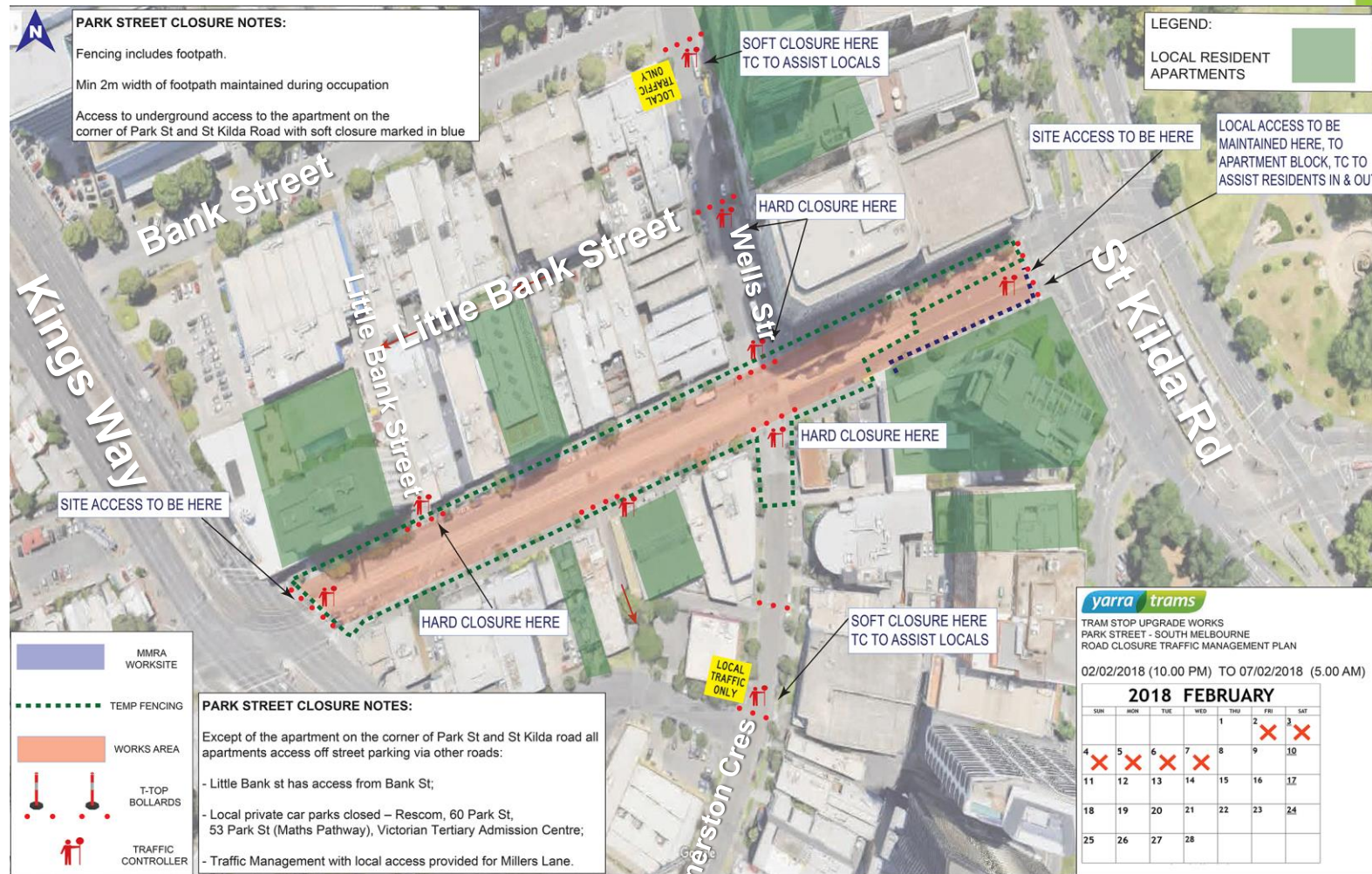
Preliminary Work	When	Transport and Traffic Impacts	Noise level
<ul style="list-style-type: none"> <li>• Site establishment</li> <li>• Minor civil works</li> <li>• Overhead tram power line work</li> <li>• Underground trenching</li> <li>• Service investigations</li> <li>• Pre-welding of rail track</li> <li>• Pole installation works</li> <li>• Tree removal</li> </ul>	<p>22 January - 1 February</p> <p>7pm to 5am, Sunday to Thursday</p> <p>Night works are required to ensure no interruption to tram services</p> <p>Some day works will be required for deliveries and minor works</p> <p>These will take place between 7am and 5pm, Monday to Friday</p>	<ul style="list-style-type: none"> <li>• Local traffic management set-up around works</li> <li>• Intermittent occupation of parking will be required in work zones</li> <li>• Resident parking will be maintained under traffic control or local alternative parking arrangements</li> <li>• will be made</li> <li>• No interruption to tram services</li> </ul>	<p>Low - Medium</p>



# Occupation program

Preliminary Work	When	Transport and Traffic Impacts	Noise level
<ul style="list-style-type: none"> <li>• Track and overhead Works</li> <li>• Construction of tram platform stop</li> <li>• Change traffic signalling in Palmerston Crescent and Wells Street intersection</li> <li>• Concreting and asphaltting works</li> </ul>	<p>24/7 works from 10pm, 2 February - 5am, 7 February 2018</p>	<ul style="list-style-type: none"> <li>• Park Street closed in both directions between St Kilda Road and Kings Way</li> <li>• No access into Park Street from Palmerston Crescent, Wells Street, Millers Lane or Little Bank Street</li> <li>• Removal of all on-street parking within the works zone</li> <li>• Pedestrian access to residences and businesses will be maintained</li> <li>• Traffic diversion routes will be in place, please follow detour signage</li> <li>• Buses replace route 58 trams between Casino (stop 115) and Fawkner Park (stop 123). For further details on bus replacement routes and stops visit the Public Transport Victoria website <a href="http://www.ptv.vic.gov.au">www.ptv.vic.gov.au</a> or call 1800 800 007 (6am to midnight daily or all night Friday and Saturday)</li> </ul>	<p>Medium-very high, noisiest during day</p>

# Site





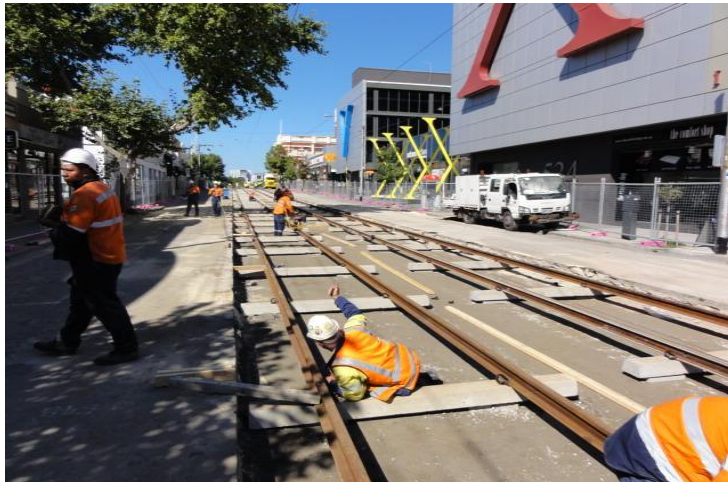
# Tram track works



1. Pre-weld works – bringing rails in



2. Breakout for excavation of existing tram tracks



3. Sleepers & tracks installed



4. Concrete pouring commences

## A New DDA Compliant Tram Stop



# Communications activities



<b>Letters to Traders &amp; Residents</b>	All addresses to 400 metres from the work zone Letter 1: week commencing Mon 22 September 2017 Letter 2: week commencing Mon 22 October 2017 Letter 3: week commencing Mon 27 December 2017
<b>Passenger Information</b>	Includes map & service changes, on board trams & distributed at key points along affected routes Week commencing 22 January 2018
<b>Trader Visits</b>	Round 1: week commencing Mon 22 October 2017 Round 2: week commencing Mon 18 December 2017 Round 3: week commencing Mon 22 January 2018
<b>Information Sessions</b>	13, 16, 22 January 2018 – 402 St Kilda Road MMRA Hub
<b>Online – Website, Twitter</b>	Yarra Trams, PTV, VicRoads
<b>At Tram Stops</b>	Static passenger bulletins displayed at all affected stops. Messages published on all electronic Passenger Information Displays (CBD PIDs)
<b>Onboard Announcements</b>	In the lead up to works on route 58
<b>Variable Message Boards</b>	Alerting incoming traffic & members of the public to the works prior to & during the works

Questions?

Thank you

**Ted Phillips**  
*Project Manager*



# CYP – 2018 Project Update

January 2018 Community Reference Group



# 2018 PROJECT UPDATE

- **Development Plan response**
- **Behind the scenes :**  
Environmental Performance Requirements
- **February – March**
  - Construction work overview
- **April**
  - Tram occupation
- **May – December**
  - Main works construction staging
  - Truck haulage planning update



# DRAFT DEVELOPMENT PLAN FEEDBACK



**480 info  
session  
attendees**



**3100+  
webpage  
visits**



**1507  
responses  
provided**



**Newspaper  
advertisements**



**32,500  
letters to  
households  
and  
businesses**

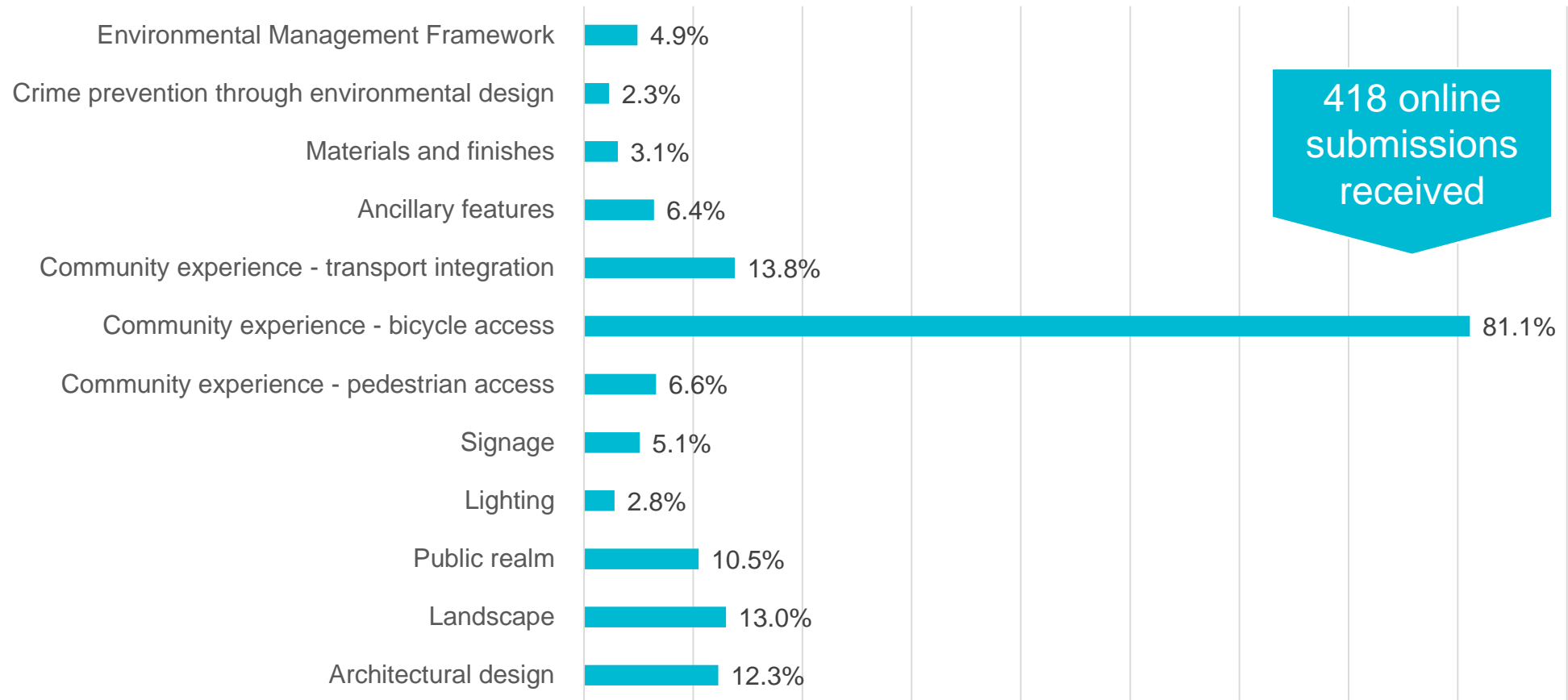


**stakeholder  
meetings**



**e-newsletters**

# WHAT WE HEARD – DEVELOPMENT PLAN





# DRAFT DEVELOPMENT PLAN REVIEW PROCESS

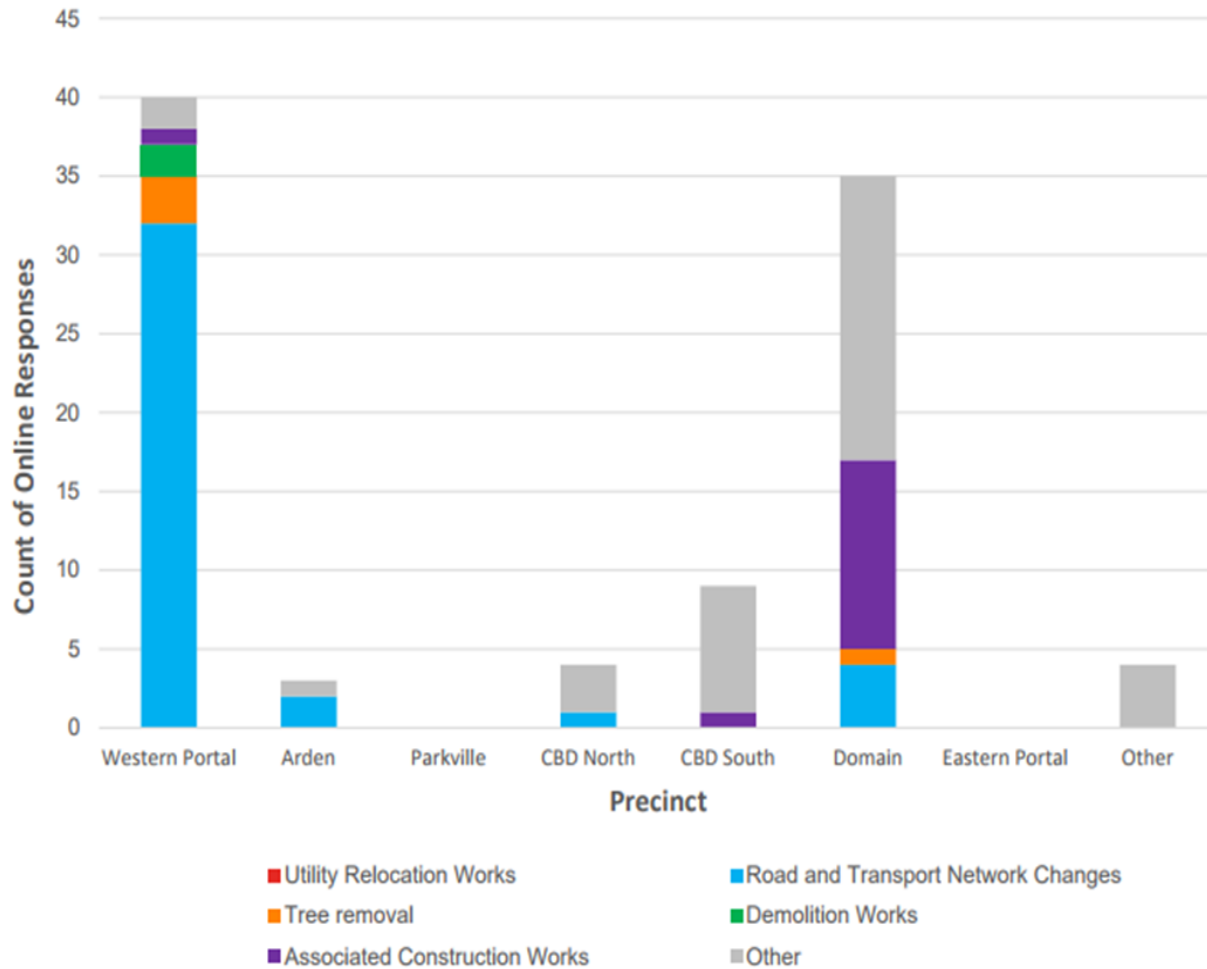
- CYP reviewing each submission received – line by line
- CYP preparing comment and response register as part of consultation summary
- CYP Consultation Summary submitted to the Minister for Planning for consideration via Department of Environment, Land, Water and Planning
- An approved Development Plan is required before main works start

## Current Program

- Submission to DPRC – 30/01/2018
- Ministerial approval – early April 2018
- Approval doesn't signal end of process – design development and stakeholder consultation continues.

# EARLY WORKS CONSULTATION

Responses for Each Precinct



## Key issues for Domain Precinct

- Traffic Arrangements
- Local road access during changes to St Kilda Road
- Pedestrian access during construction
- Hoarding
- Visual amenity

# WHAT WE HEARD – HERITAGE PERMITS

- 32 submissions received in total
- Key Themes
  - Tree removal including protection and replacement
  - Visual Amenity including fencing, hoarding, and construction sites
  - Edmund Herring Oval
  - Construction method and options to reduce surface impacts

# BEHIND THE SCENES – EPR COMPLIANCE

- **Noise modelling**
  - Phase 1: February – April Works
  - Phase 2: Main Works
  - Validating background noise level data
  - Utilising existing noise monitors, with new additions
  - Presentation at February CRG on noise modelling process
- **Property Condition Surveys**
  - Mapping key work activities and scheduling pre-condition surveys accordingly.
  - Survey process will begin in February
- **Tree Removal**
  - Enacting tree removal protocols
  - Workshops with Council to review every single tree prior to removal
- **Construction Environmental Management Plan (CEMP)**
  - Outlines the roadmap for the implementation of the Project’s Environment Management System which will be certified to ISO14001:2015
- **Air Quality**
  - Qualitative risk-based assessment of potential impacts upon sensitive receivers
  - Implement dust management measures
  - Regular visual inspections
- **Site Environmental Implementation Plan (SEIP)**
  - Describes how environmental aspects and impacts will be managed on site

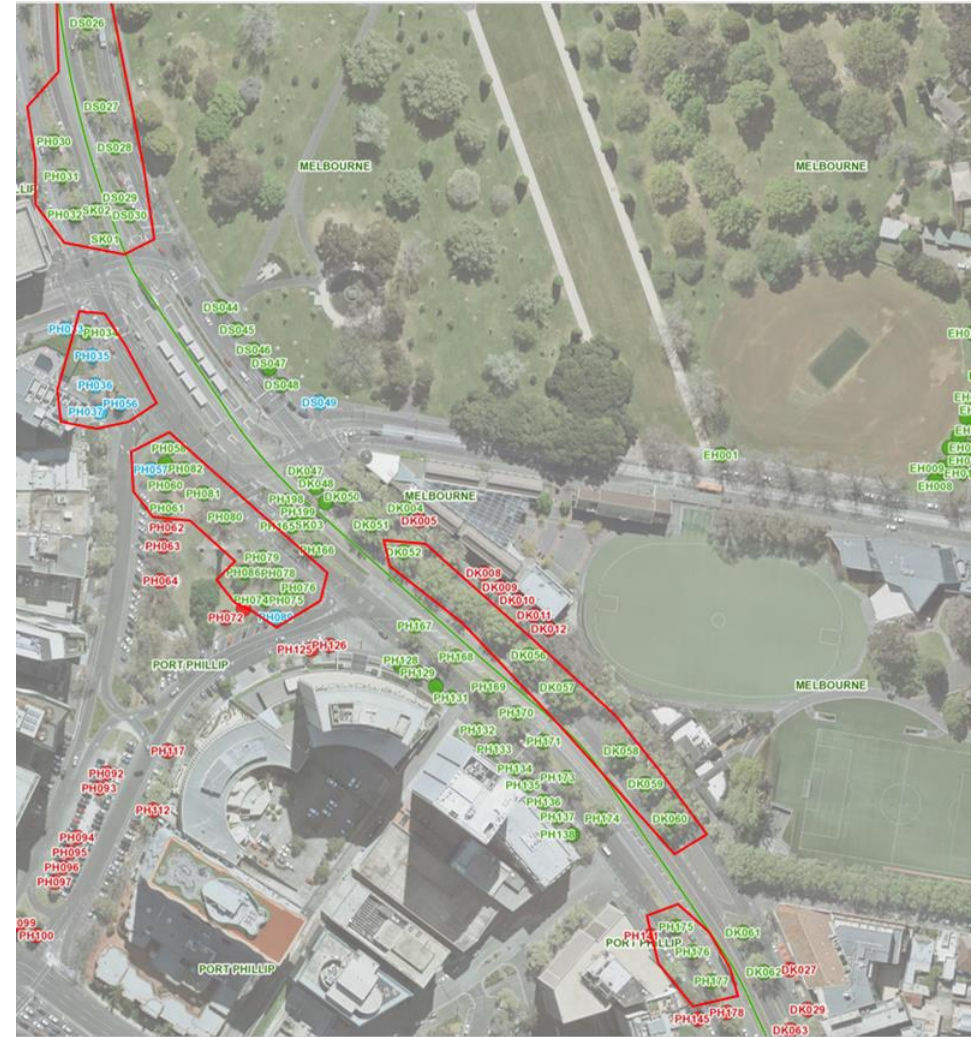
# FEBRUARY – MARCH CONSTRUCTION WORKS

- Establish site office
- Tree pruning & tree removal
- Removal of medians and kerbs
- Construction of temporary tram & road alignment
- Geotech drilling and soil testing



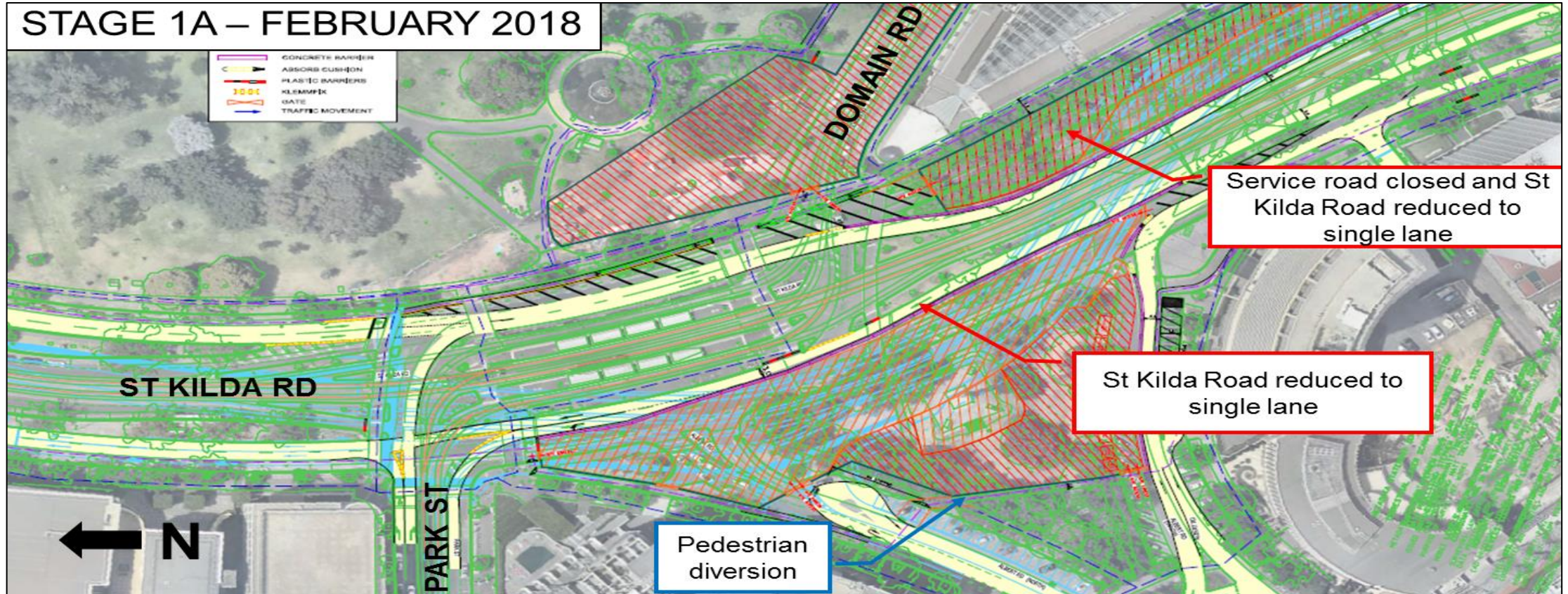
# FEBRUARY – MARCH TREE REMOVAL

- Tree removal is expected to commence in February, subject to relevant approvals
- Workshops held with City of Melbourne, City of Port Phillip and MMRA
- Detailed review of each individual tree to determine whether removal can be avoided has been done Up to 42 trees will be removed from February to March
- Only those required for the tram and road realignment will be removed as outlined in EWP and Heritage Application.

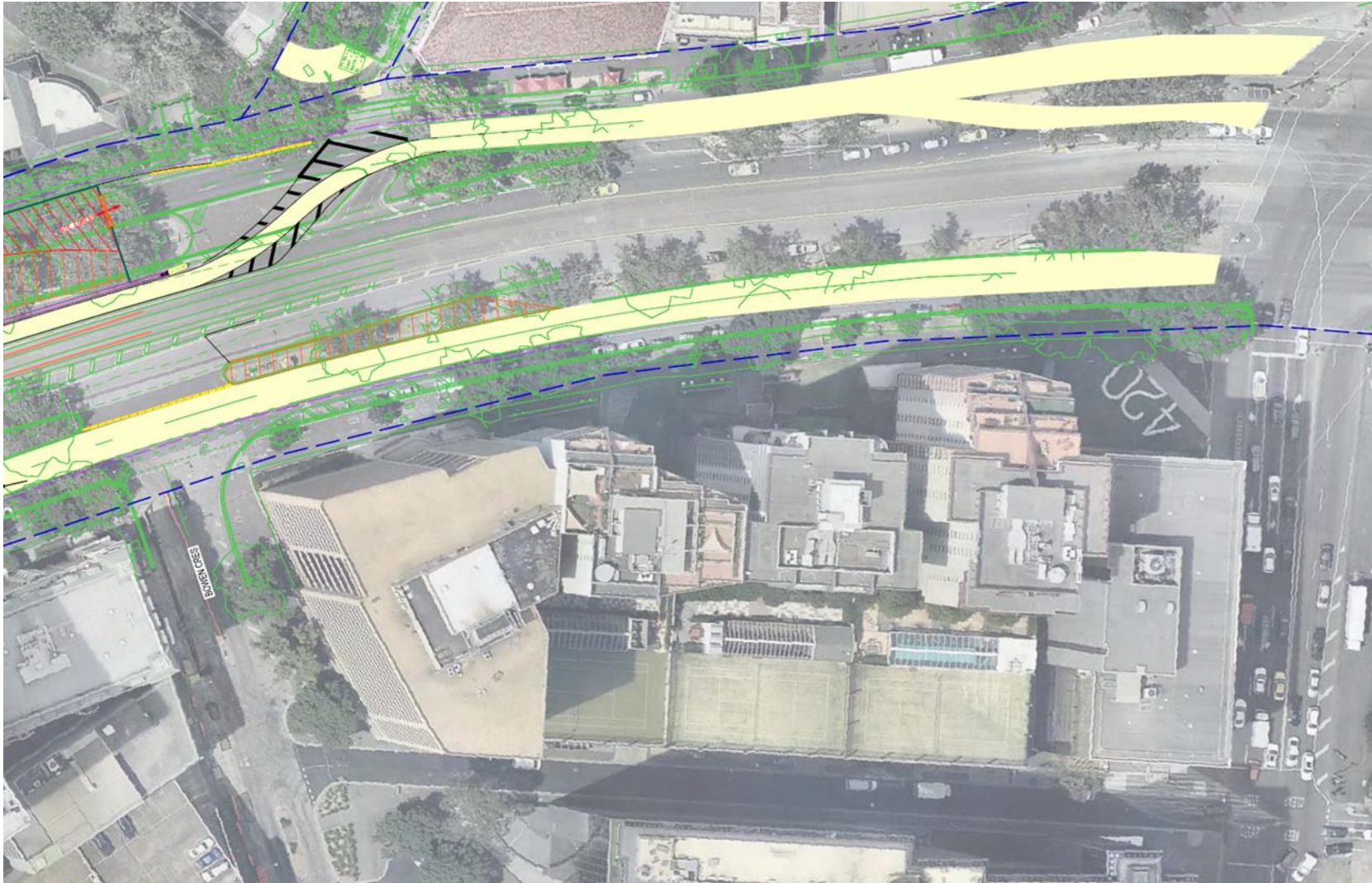


# FEBRUARY – MARCH

## TRAFFIC MANAGEMENT – PARK ST/ALBERT ROAD



# FEBRUARY – MARCH TRAFFIC MANAGEMENT – BOWEN CRES



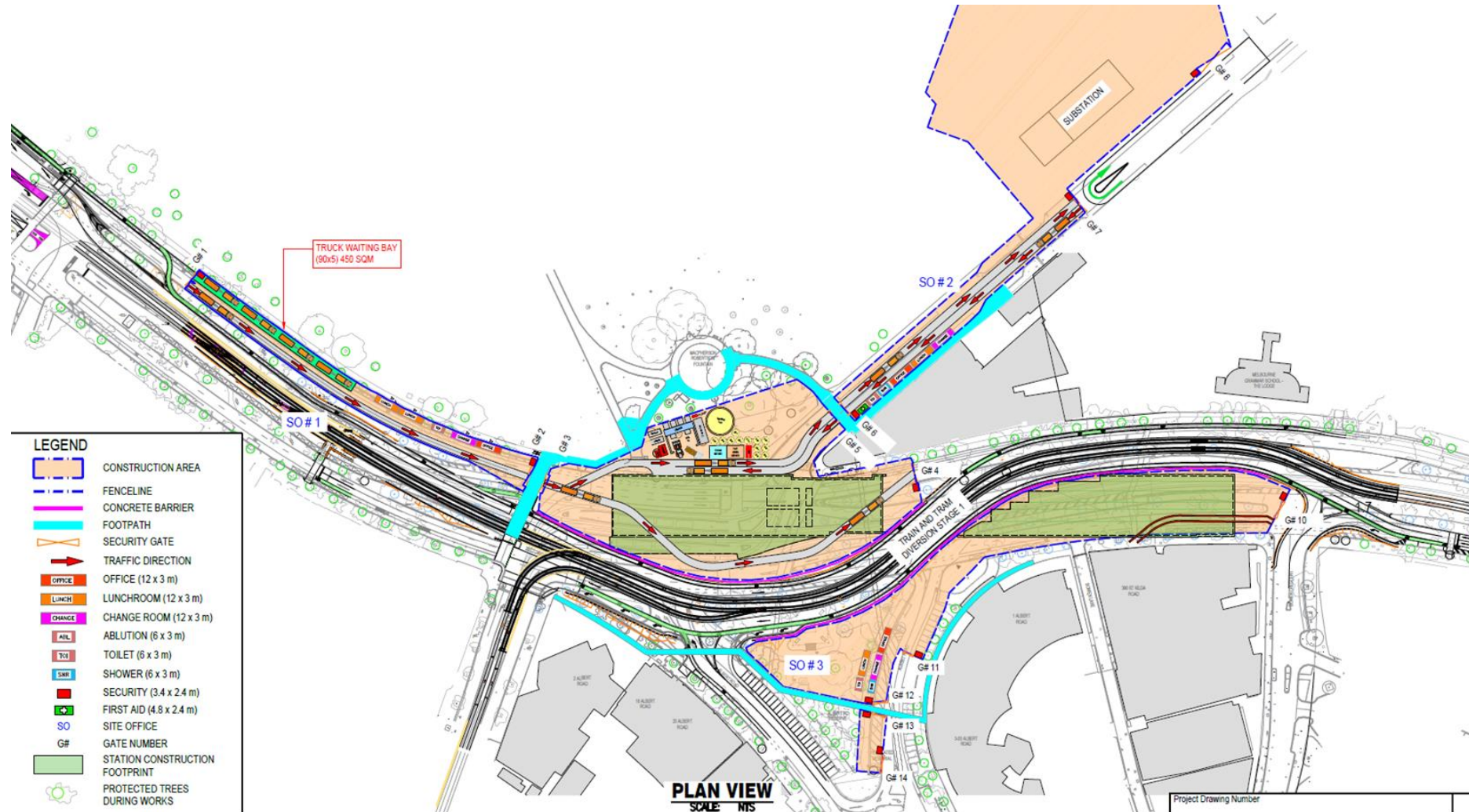


# APRIL TRAM OCCUPATION

- Occupation will take place 1–18 April
- 24 hour works
- Tram and road realignment will occur
- Buses will replace trams
- Bike lanes will remain open
- Upon completion of the occupation the trams and road will be in the long term temporary arrangement
- All works are subject to relevant approvals.



# MID-APRIL: NEW TRAFFIC CONFIGURATION



## MAY - DECEMBER

- High level construction dates - indicative only, subject to change
- Specific notification will be provided as dates are confirmed
  
- Piling North Box – 3<sup>rd</sup> quarter 2018
- Acoustic Shed Construction – 4<sup>th</sup> quarter 2018
- North Box Roof Excavation – 4<sup>th</sup> quarter 2018
- Piling South Box – 4<sup>th</sup> quarter 2018

# TRUCK ROUTES DEVELOPMENT

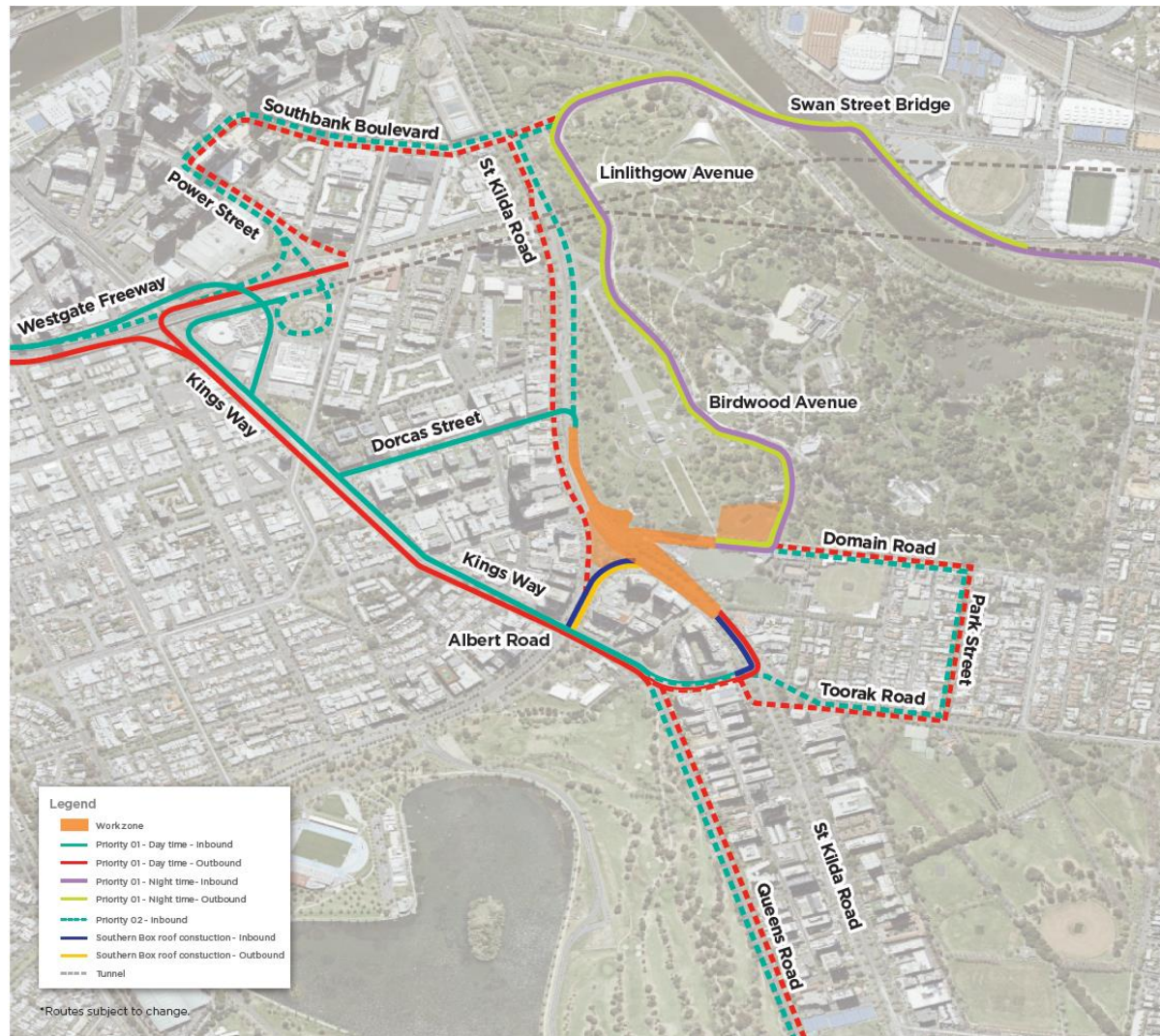
## CONSIDERATIONS:

- Environmental Management Framework
- Shortest most suitable route to the freeway network
- Options were then compared Human Impact Route Assessment (HIRA)
- Consultation with VicRoads and Councils
- Secondary routes developed for utilisation during traffic disruptions and changes to site access

## OUR APPROACH

- Real Time monitoring with '*Virtual Superintendent*' tracking software
- Broadband Reverse Beepers
- Truck safety measures and driver training in place
- Planning for dedicated night time route away from residents through Birdwood Avenue

# MAY 2018 ONWARDS – INDICATIVE TRUCK ROUTES





# QUESTIONS?