



WORKS NOTIFICATION

SWANSTON STREET SAFETY GATES JULY - AUGUST 2019

To ensure construction vehicles, motorists, cyclists and pedestrians can continue to safely move around Metro Tunnel Town Hall Station worksites, pedestrian and cyclist safety gates will be installed on either side of the Flinders Quarter driveway, and in the northbound cyclist lane on Swanston Street.

Manually operated pedestrian gates have been operating at this entrance and will be replaced with safety gates for the duration of construction works. The gates will create a safer and more efficient process and will be operational from late August 2019.

What we are doing

- Installation of services
- Partial footpath closure
- Installation of pedestrian and cyclist safety gates
- Use of hand drills and an elevated works platform
- Low noise levels are expected for the duration of these works.

Safety gates

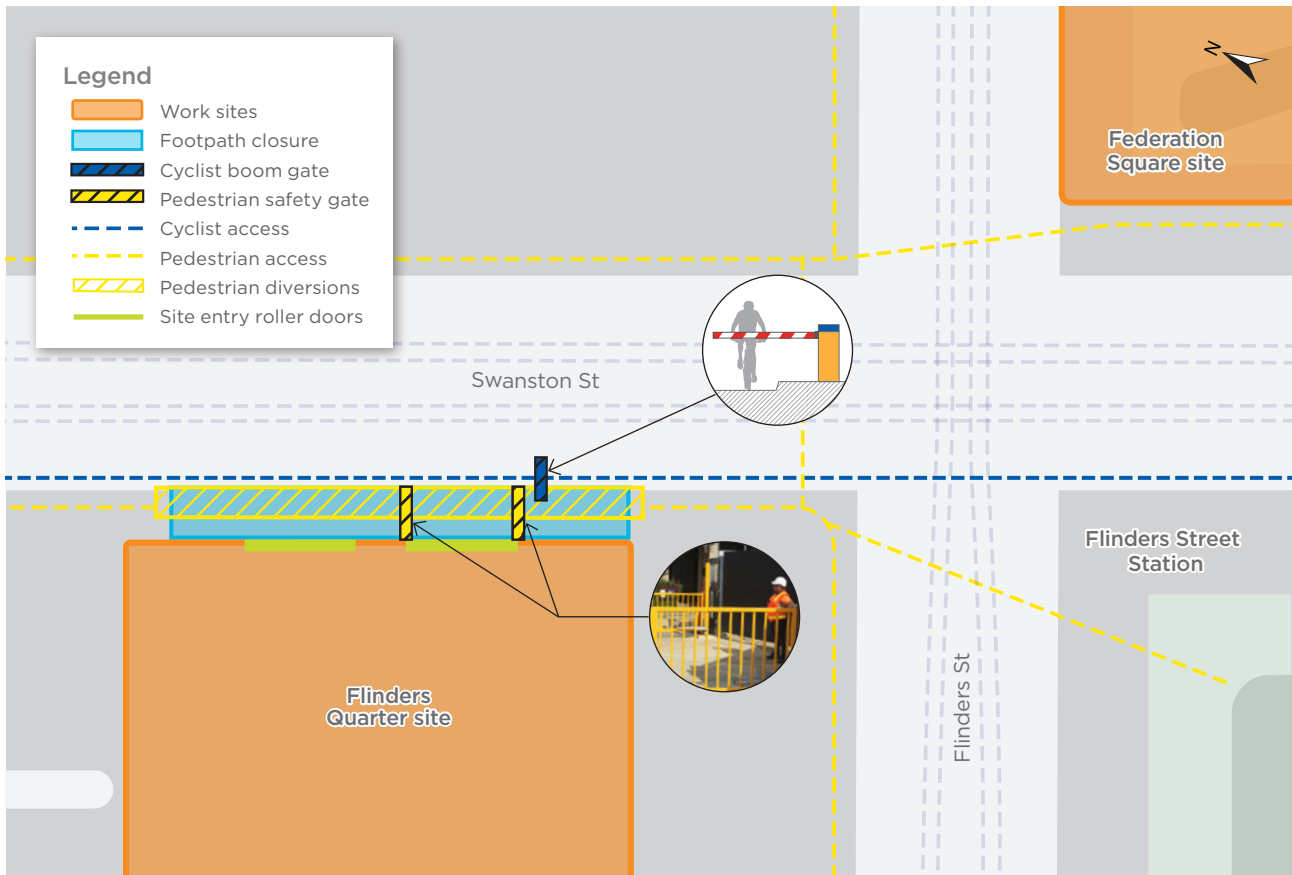
- When a construction vehicle is approaching, a traffic controller will instruct the boom gates to close. Amber, audible warning strobe lights will activate when the gates are operated to signal that they are closing
- There will be minor delays to pedestrians and cyclists while the gates are closed to enable construction vehicles to safely enter the sites.

What to be aware of

- To safely undertake these works the Swanston Street western footpath between Flinders Street and Flinders Lane will be narrowed. Pedestrians will be detoured around the works area
- Traffic management will be in place to safely assist pedestrians and cyclists for the duration of these works.

When

- Thursday 25 until Friday 26 July
9am - 4pm
- Monday 12 until Friday 16 August
7pm - 6am



Indicative only

More information

To find out more about the Metro Tunnel Project and register for future email updates:

- metrotunnel.vic.gov.au
- 1800 105 105 (24 hours a day, 7 days a week)
Press 2 and follow the prompts
- facebook.com/metrotunnel
- Subscribe to eNews or construction notification emails: metrotunnel.vic.gov.au/subscribe

Interpreter Service

(03) 9280 0700

Arabic	العربية	Russian	Русский
Cantonese	廣東話	Serbian	Српски
Greek	Ελληνικά	Sinhalese	සිංහල
Italian	Italiano	Spanish	Español
Korean	한국어	Turkish	Türkçe
Macedonian	Македонски	Vietnamese	Tiếng Việt
Mandarin	普通话		

It should be noted that this information is current at the time of printing, however due to unforeseen circumstances, changes may occur. Please visit metrotunnel.vic.gov.au for the latest updates.