

Works Notification

Extended out of hours works Kensington

26 October 2020 to early 2021

As part of the Metro Tunnel Project we will be undertaking extended out of hours work at the western tunnel entrance.

Significant progress has been achieved in Kensington during 2019 and 2020 to construct the western tunnel entrance. We wish to advise that there will be an extended period of out of hours and overnight works in Kensington over the next few months to ensure critical works are completed by early 2021.

These works are required due to ongoing challenges with ground conditions and to complete additional tunnel entrance walls underneath the tunnel entrance roof slab.

What we are doing

- Tunnel entrance excavation, involving excavators loading material into trucks
- Using an excavator to prepare the area for concrete pours
- Using a crane to lift concrete panels and materials into the tunnel entrance
- Installing steel reinforcement and timber formwork in preparation for concrete pours for the tunnel entrance ground slab and internal tunnel entrance walls
- Installing drainage pipes, pits, grout and waterproofing material
- Pouring concrete and crushed rock to provide a stable working area
- Concreting works involving around five trucks per hour and a concrete pump
- Concrete breakback, using a jackhammer, saw cutter and excavator (7am to 6pm only)
- Establishment of a dewatering system to remove and recharge water

- Ground improvement works within the tunnel entrance (further information on these works will be provided ahead of time).

When

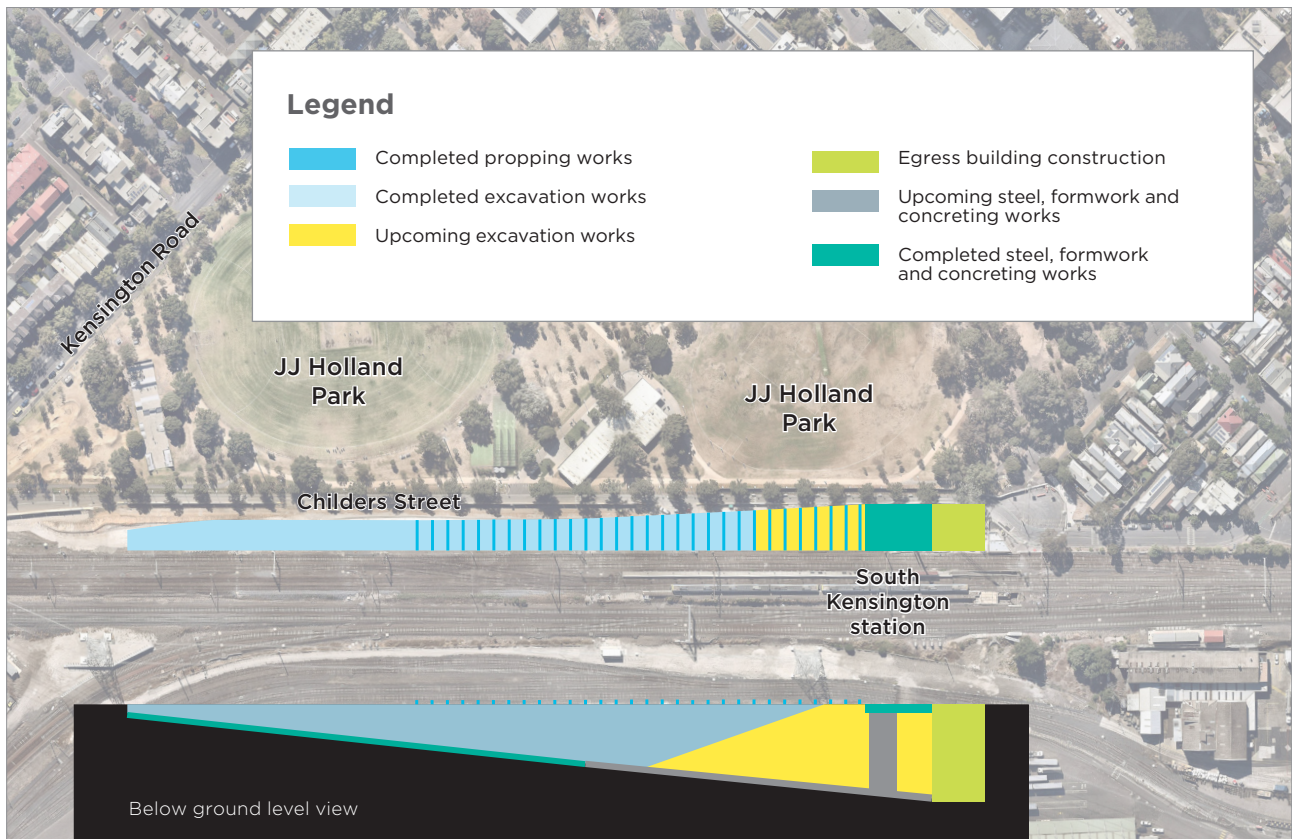
- Commencing Monday 26 October until early 2021
- 24-hours from 7am Monday to 7pm Saturday
- No works on Saturday evening and Sundays
- Further information on the works program during the summer holiday period will be provided ahead of time.

What you should be aware of

- Excavation is expected to be completed by early-November
- Excavation works will involve approximately six trucks per hour travelling along Childers Street, Hobsons Road and south along Kensington Road
- The use of smaller trucks will be used from 6pm onwards to avoid use of the turnaround located adjacent to Ormond Street. Trucks will enter from Kensington Road and then reverse along Childers Street
- Traffic controllers will be in place on Kensington Road and Childers Street to assist with trucks reversing into site
- Concreting works, where possible will be kept to daytime only. Larger concrete pours may need to commence at 6am and extend beyond 6pm
- Once excavation is complete, it is expected that the tunnel entrance roof slab and walls will provide a level of noise attenuation for remaining works occurring within the tunnel entrance

— Work occurring overnight is expected to generate periods of low level noise for residents close to the work area. The project team will contact these residents directly to discuss upcoming works in more detail. Works are not expected to be audible to the wider area

— If you would like any further information on upcoming works, please contact 1800 105 105 or visit **metrotunnel.vic.gov.au**.



Artist impression

Health and safety

Metro Tunnel Project works are progressing safely under the current Second Step restrictions in metropolitan Melbourne.

You may notice an increase of workers on Victoria's Big Build projects as restrictions on construction sites start to ease. Large-scale public infrastructure projects are critical and strict COVIDsafe Plans are in place on all project sites across Victoria.

The health and safety of our workforce and community remains our top priority. Workers on all of Victoria's Big Build sites are required to wear face masks unless they meet any of the criteria for exception – such as a medical condition for Occupational Health and Safety guidelines.

Physical distancing measures are in place as well as increased hygiene practices.

For more information and advice about the coronavirus (COVID-19), please visit **coronavirus.vic.gov.au**.


Keeping you informed


To help support the Victorian Government's Second Step coronavirus restrictions, we've temporarily changed the way we'll notify you about upcoming works, to make sure people still know what's happening in their area.

Please sign up to our email updates via Metro Tunnel Project website (**metrotunnel.vic.gov.au**) so we can continue to keep you informed about works in your area.

More information

To find out more about the Metro Tunnel Project:

 **metrotunnel.vic.gov.au**

 **1800 105 105** (24 hours a day, 7 days a week)

Rail Projects Victoria
PO Box 4509, Melbourne, VIC 3001



Interpreter Service **(03) 9209 0147**

It should be noted that this information is current at the time of printing, however due to unforeseen circumstances, changes may occur. Please visit **railprojects.vic.gov.au** for the latest updates.