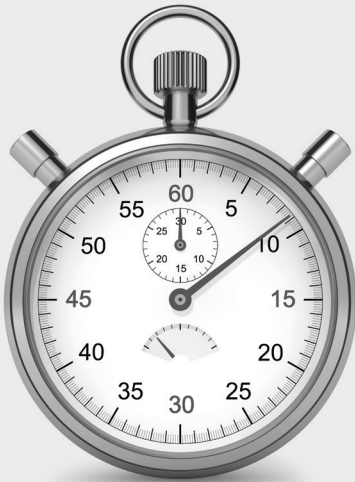




Metropolitan lines

The Metro Tunnel will save you time



By creating extra space in the City Loop, the Metro Tunnel means more trains, more often across Melbourne, and will save you time travelling to Parkville and St Kilda Road.



**More trains,
more often**



What does the Metro Tunnel Project mean for me?

Construction is underway on the Metro Tunnel, Victoria's biggest ever public transport project. It will increase the number of trains we can run across Melbourne, and means less crowding and less waiting.

By taking three of the busiest train lines through a new tunnel under the CBD, it will free up space in the City Loop to run more trains to and from the suburbs. That means more trains, more often and a more reliable train network for us all when the Metro Tunnel opens from 2025.

Hours off your weekly commute

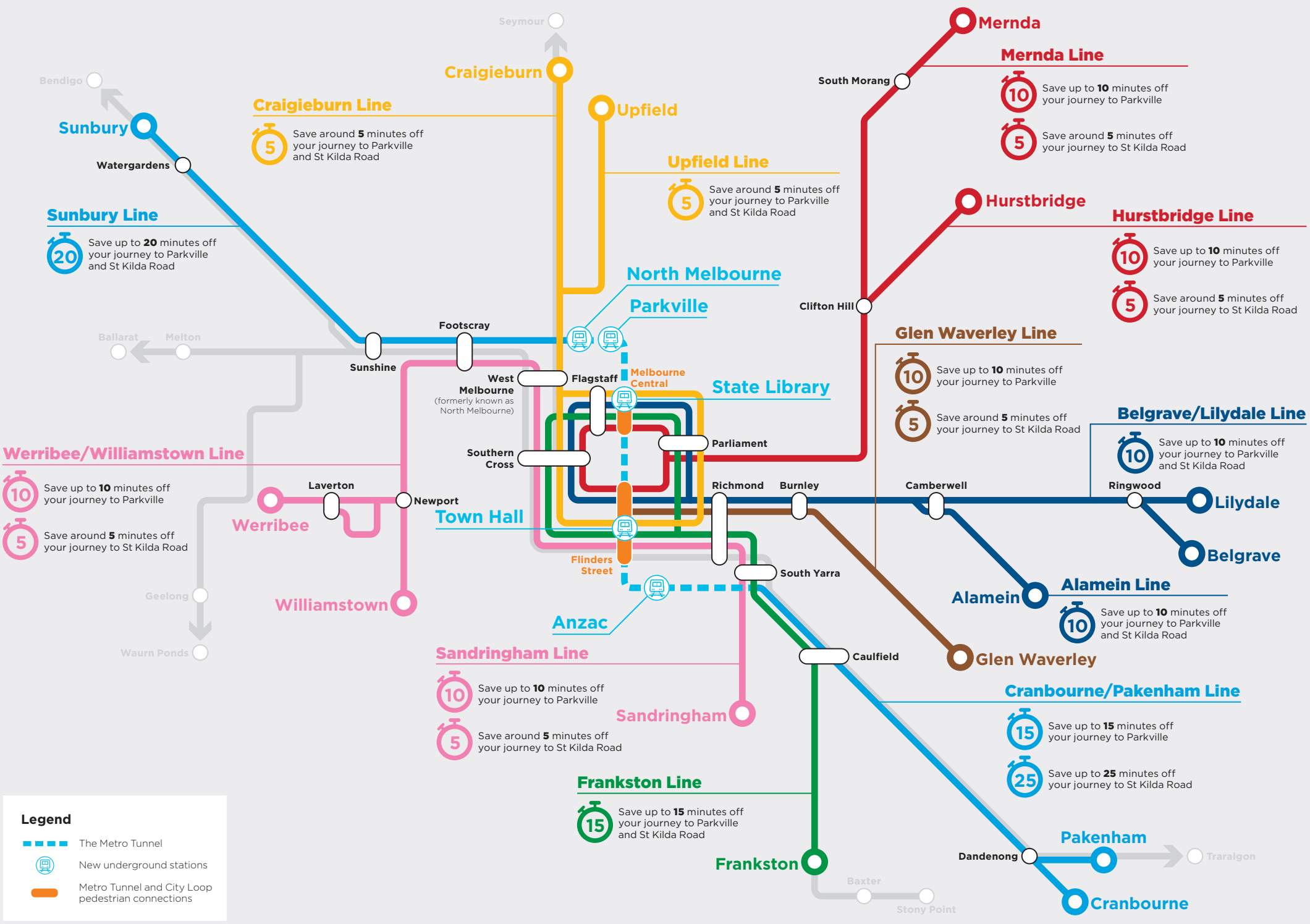
Passengers will take time off their journeys to Parkville and St Kilda Road by changing to Metro Tunnel services at Caulfield, Footscray, Melbourne Central and Flinders Street.

Greater capacity

The Metro Tunnel will create room for more than half a million people to travel on the train network during peak periods every week.

Hassle-free connections






The project will deliver more convenient journeys and hassle-free connections for train passengers day.






Legend

- The Metro Tunnel
- New underground stations
- Metro Tunnel and City Loop pedestrian connections

How does the Metro Tunnel benefit Melbourne?

-  Creates room to run more trains, more often, on lines across Melbourne
-  Reduces crowding at CBD stations
-  7,000 jobs created during construction
-  Connects some of the city's key destinations to Melbourne's train network for the first time
-  Direct services to Melbourne's leading universities, hospitals and employment areas

Wider benefits

-  More train trips will reduce road congestion
-  Lays the foundation for a truly international style metro system with turn up and go services
-  Triggers the urban renewal of key areas of Melbourne

More information

To find out more about the Metro Tunnel Project and register for future email updates:

-  metro.tunnel.vic.gov.au
-  1800 105 105 (24 hours a day, 7 days a week)
Press 2 and follow the prompts
-  facebook.com/metro.tunnel
-  Subscribe to eNews or construction notification emails: metro.tunnel.vic.gov.au/subscribe

This information is current at the time of printing.
Please visit metro.tunnel.vic.gov.au for the latest updates.