

How does the Metro Tunnel benefit Melbourne?

-  Creates room to run more trains, more often, on lines across Melbourne
-  Reduces crowding at CBD stations
-  7,000 jobs created during construction
-  Connects some of the city's key destinations to Victoria's train network for the first time
-  Direct services to Melbourne's leading universities, hospitals and employment areas
-  More train trips will reduce road congestion
-  Lays the foundation for a truly international style metro system with turn up and go services

Enter the world of the Metro Tunnel

Our visitor centre is a great place to discover more about Victoria's biggest ever public transport project. It's located at 125-133 Swanston Street across the road from Melbourne Town Hall.

More information

To find out more and register for future email updates:

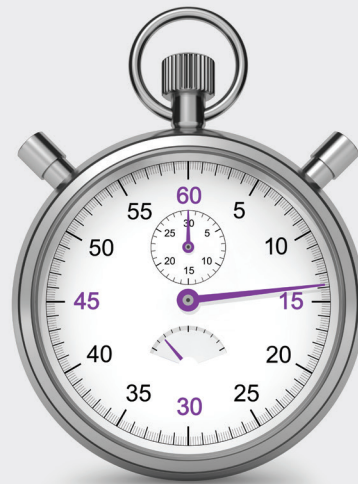
-  metrotunnel.vic.gov.au
-  1800 105 105 (24 hours a day, 7 days a week)
Press 2 and follow the prompts
-  facebook.com/metrotunnel
-  Subscribe to eNews or construction notification emails: metrotunnel.vic.gov.au/subscribe

This information is current at the time of printing.
Please visit metrotunnel.vic.gov.au for the latest updates.



Regional lines

The Metro Tunnel will save you time



By creating extra space in the City Loop, the Metro Tunnel means more trains, more often across Melbourne, and will save you time travelling to Parkville and St Kilda Road.

What does the Metro Tunnel Project mean for regional Victoria?

Construction is underway on the Metro. It will increase the number of trains we can run across Melbourne, and means less crowding and less waiting.

By taking our busiest train lines through a new tunnel under the CBD, it will free up space in the City Loop to run more trains to and from the suburbs. That means more trains and a more reliable train network for us all when the Metro Tunnel opens from 2025.

Saving you time

Melbourne bound regional passengers will save up to 15 minutes off trips to Parkville and St Kilda Road by changing onto Metro Tunnel services.

Hassle-free connections

The Metro Tunnel will deliver more convenient journeys and hassle-free connections for train passengers every day.

