



DOMAIN COMMUNITY REFERENCE GROUP

Meeting #8

Wednesday 11 July 2018



INTRODUCTION



OPENING OF METRO TUNNEL HQ

WEEK 1 SUMMARY

Almost
1,500
people attended



Virtual Reality
TBM experience is
the most popular
attraction

More than
150
schoolkids
attended



Weekend visitors
mentioned local
newspaper advertising



Weekday visitors
mentioned media coverage
on Ch 7 and 3AW



Visitors love finding their
house and rail lines on
the wall maps

98%
of visitors are having a
positive customer experience

WHAT'S AT METRO TUNNEL HQ

- Interactive games to discover benefits of Metro tunnel for your train trip
- Staff to assist with queries about the works
- Virtual reality goggles to explore the world of tunnel boring machines
- An Education Program for school students learn how public transport is changing and consider the Melbourne of the future
- Between now and September, approximately 1400 students will take part in the Education Program.





CROSS YARRA PARTNERSHIP

JULY WORKS UPDATE

CURRENT WORKS



CURRENT WORKS – NORTHERN BOX



CURRENT WORKS – SOUTHERN BOX



EMERGENCY EVACUATION DRILL

The construction team will be conducting a test of the emergency evacuation procedures on site

Thursday 12 July 11am

A siren will sound on site for approximately one minute

The workforce will evacuate to either the parkland behind cobbiers statue or to Albert Reserve

The entire exercise is expected to take 30 minutes to complete

May be postponed due to inclement weather



CURRENT WORKS



CURRENT WORKS



UPCOMING TRAFFIC CHANGES

- The St Kilda Road service lane in front of 400 and 390 St Kilda Road will remain closed until mid to late 2019
- Local access will be maintained for residents of 400 St Kilda Road
- Access to Albert Road from Bowen Lane will be maintained.





UPCOMING WORKS

NORTHERN BOX

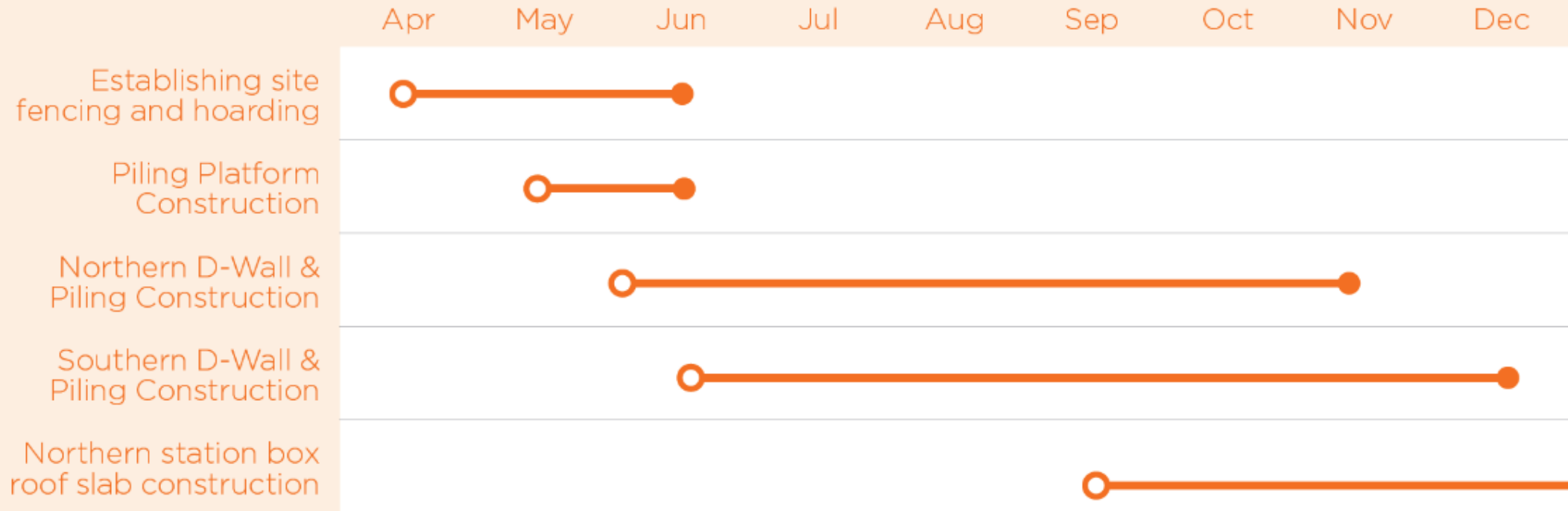
- Ongoing piling platform works
- Ongoing Guide Wall construction works
- Installing D-Walls to a depth of 25 meters along the sides of the station box

SOUTHERN BOX

- Service Proving – HV at 390 St Kilda Road
- Covered walkway installation
- Ground Anchor Removal
- Tree Removal
- Northern Boundary Retaining Wall

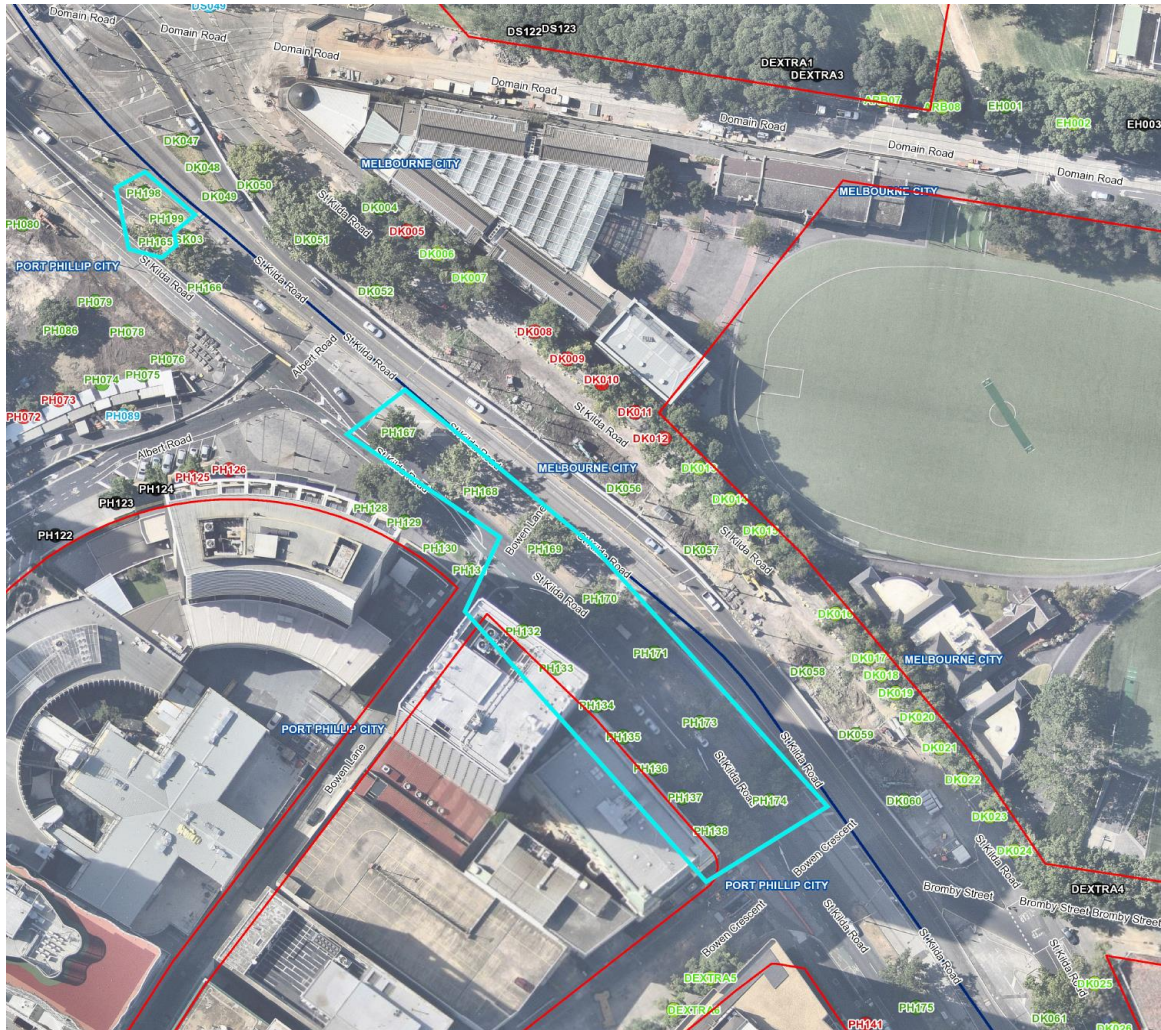
PROGRAM TIMELINE

Anzac Station lookahead for 2018



Indicative only.

REGULAR UPDATE- TREE REMOVAL



St Kilda Road:
5 Trees to be removed this month

- PH138
- PH137
- PH136
- PH135
- PH134

REGULAR UPDATE- TREE REMOVAL



Edmund Herring Oval:

- 14 trees to be relocated
- 4 trees have already been relocated to Government House

COVERED WALKWAY (390 ST KILDA ROAD)



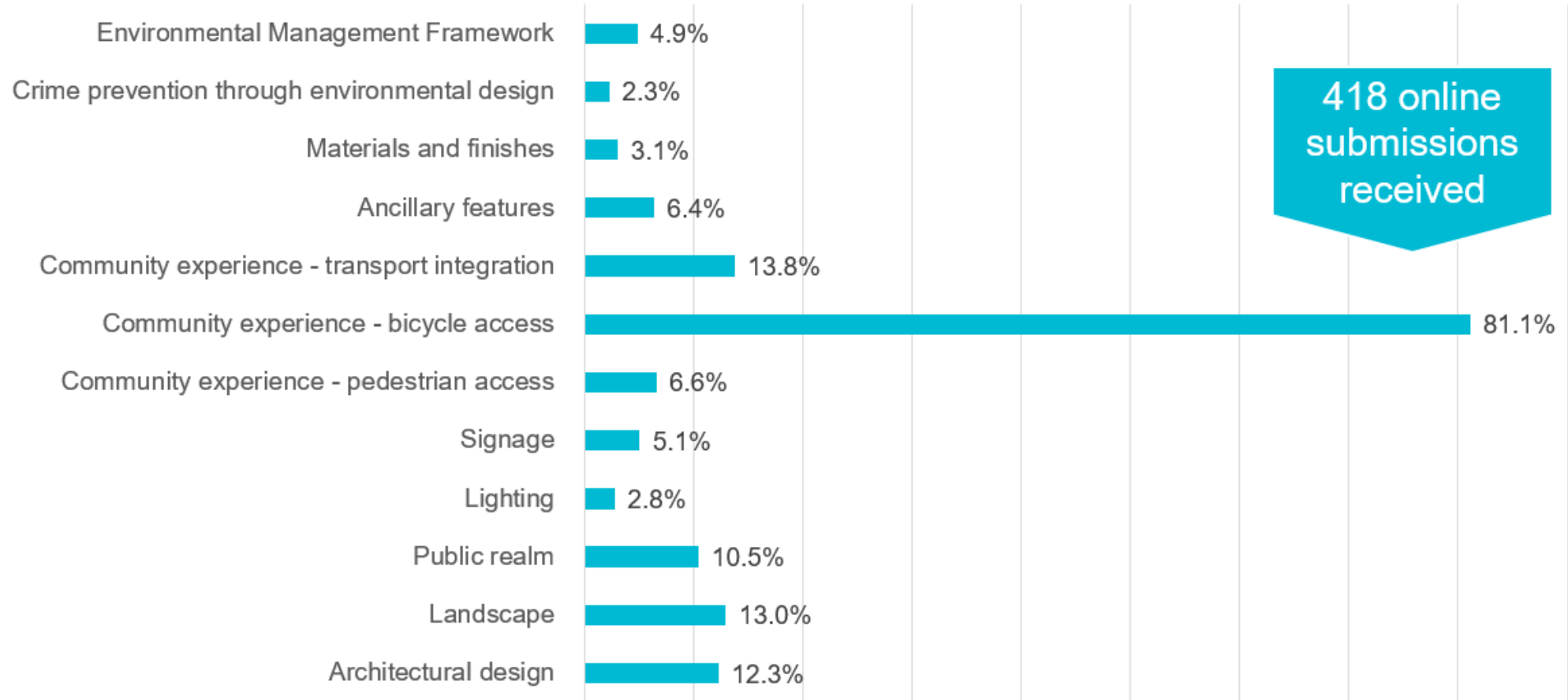
Example only



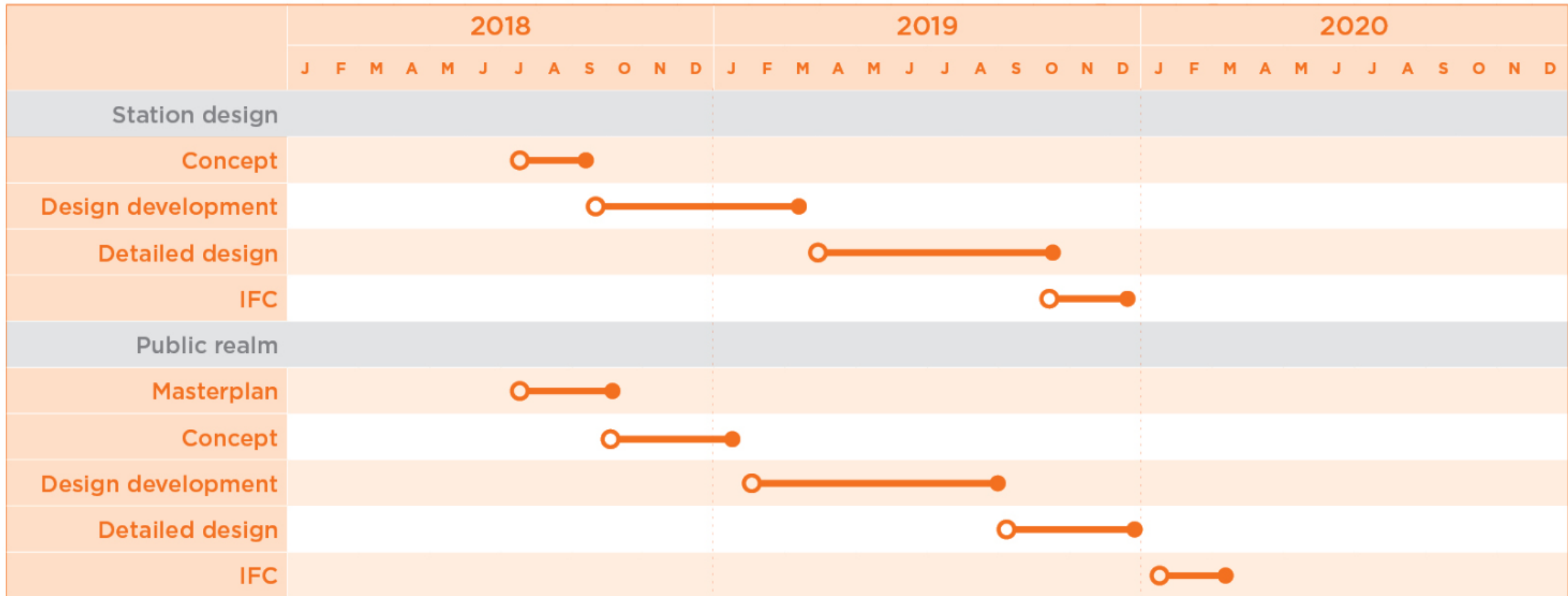
DESIGN UPDATE



DEVELOPMENT PLAN FEEDBACK



DESIGN: PROGRAM



All dates current at the time of publication, however are subject to change.



DESIGN: KEY CONSIDERATIONS

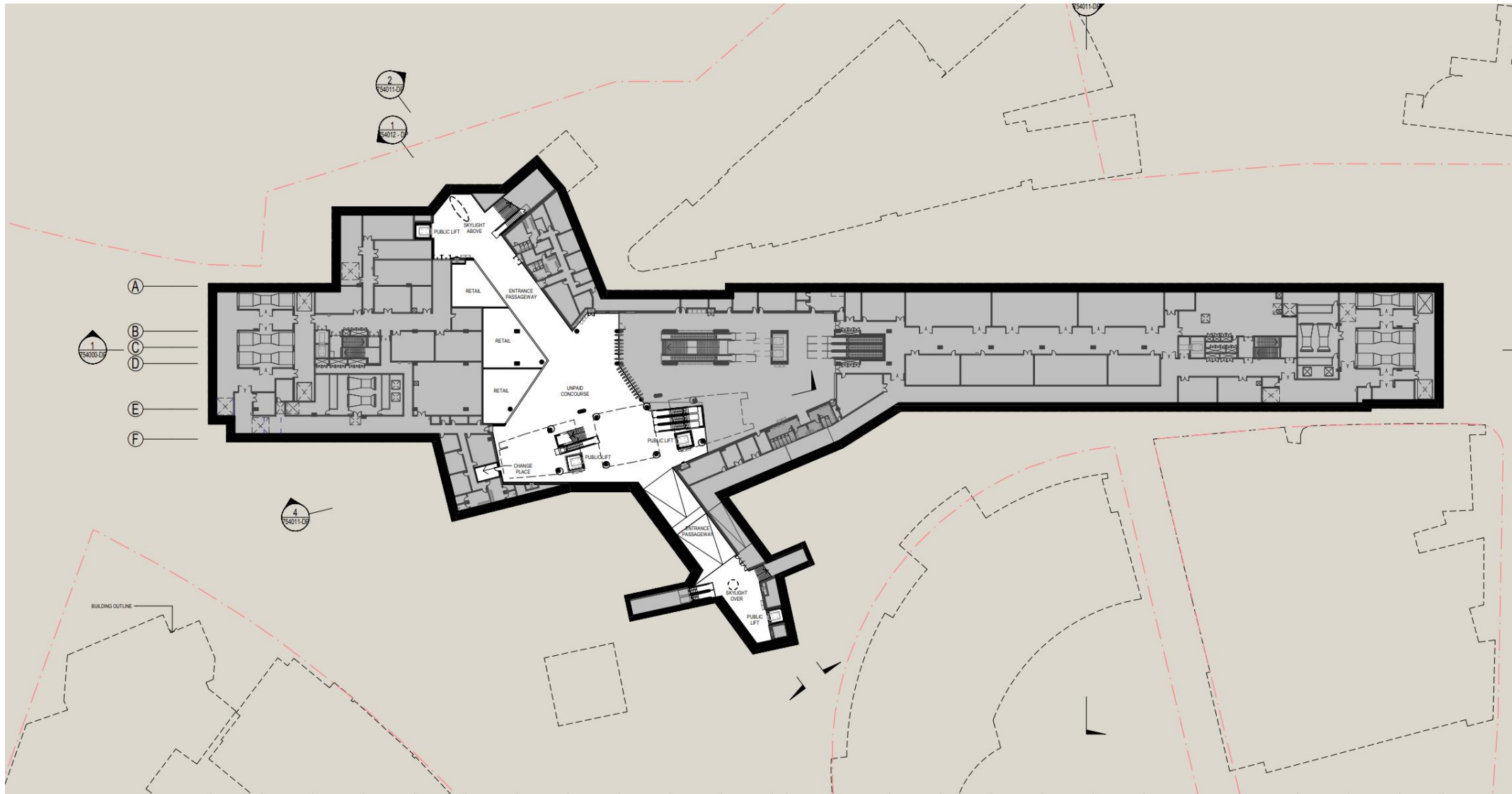
- Shrine Entrance
- Western Entrance
- Waste/Logistics
- Flood Modeling
- Fire and life safety/ egress resolution
- Back of house planning
- Platform level PSD arrangement
- **Detailed stakeholder feedback**

DESIGN: UPDATE



THE DESIGN OF BICYCLE LANES IN THE DOMAIN PRECINCT HAS BEEN DEVELOPED TO INTEGRATE INTO THE EXISTING BICYCLE NETWORK ALONG ST KILDA ROAD AND THE WIDER PRECINCT. IF A FUTURE DECISION IS MADE REGARDING THE BICYCLE LANE LAYOUT CYP WILL MAKE CHANGES BASED ON ANY DIRECTION FROM THE STATE.

DESIGN: UPDATE





QUESTIONS?

TRAM NOISE PRESENTATION



CYP DESIGN AND CONSTRUCTION OVERVIEW

Pre Construction

- CYP, RPV, VicRoads and Yarra Trams working group
- Weekly design and construction meetings to confirm specific design and construction requirements

Post Construction

- Detailed inspection of the constructed track
- Review of the design and construction records
- Review of photos from construction
- Providing advice on possible mitigation options via local and international experts

COMMUNICATIONS AND ENGAGEMENT

- Letter to residents 15 June
- Community information session 27 June
- Works notification for rail grinding 27 June
- CRG update 11 July



NOISE MITIGATION MEASURES

The following noise mitigation measures are being explored:

- Rail Grinding
- Lubrication of tracks with a water cart
- Modification of the pavement
- Friction Modifier



NOISE MONITORING AND ASSESSMENTS

Qualitative monitoring

- Daily monitoring from Wednesday 27 June to Friday 6 July (7am – 9am and 4pm – 6pm)
- 15 individuals at 2 locations

Quantitative monitoring

- Acoustic specialist monitoring noise and frequency using specialised equipment.



RAIL GRINDING

- Rail Grinding was undertaken at night on Thursday 28 June and Sunday 1 July
- Works needed to take place at night to avoid disruption to tram services



WATER CART

- A water cart was used to lubricate the tracks
- This took place from 10am – 2pm on Wednesday 4 July





CRACK SEALANT

Physical modifications of track using crack sealant

- Asphalt is sawcut a 25mm wide groove on both sides of rail on both rails.
- Four cuts over approximately 50m length of track.
- Asphalt and crushed rock to be removed from groove down to foot of rail
- Plasticiser or bitumen emulsion to be inserted (weather dependent)
- Monitor noise levels
- Saw cutting of the asphalt is scheduled for mid-July

Residents will be notified when overnight saw cutting is scheduled



FRICTION MODIFIER

Type of lubricant applied to tracks to reduce friction between wheel and tram track

- Has not been used on the Melbourne tram network before
- Trial has commenced and the product is under review
- Expected to be trialled on St Kilda Road between mid July and mid August, pending safety approvals
- Based on recent results from trials at Preston Depot, a Friction Modifier can be used on the In Service Track without detrimental effects on tram braking.



CITY OF PORT PHILLIP



DEVELOPMENTS AND PARKING

Draft MOVE, CONNECT, LIVE 2018-2028

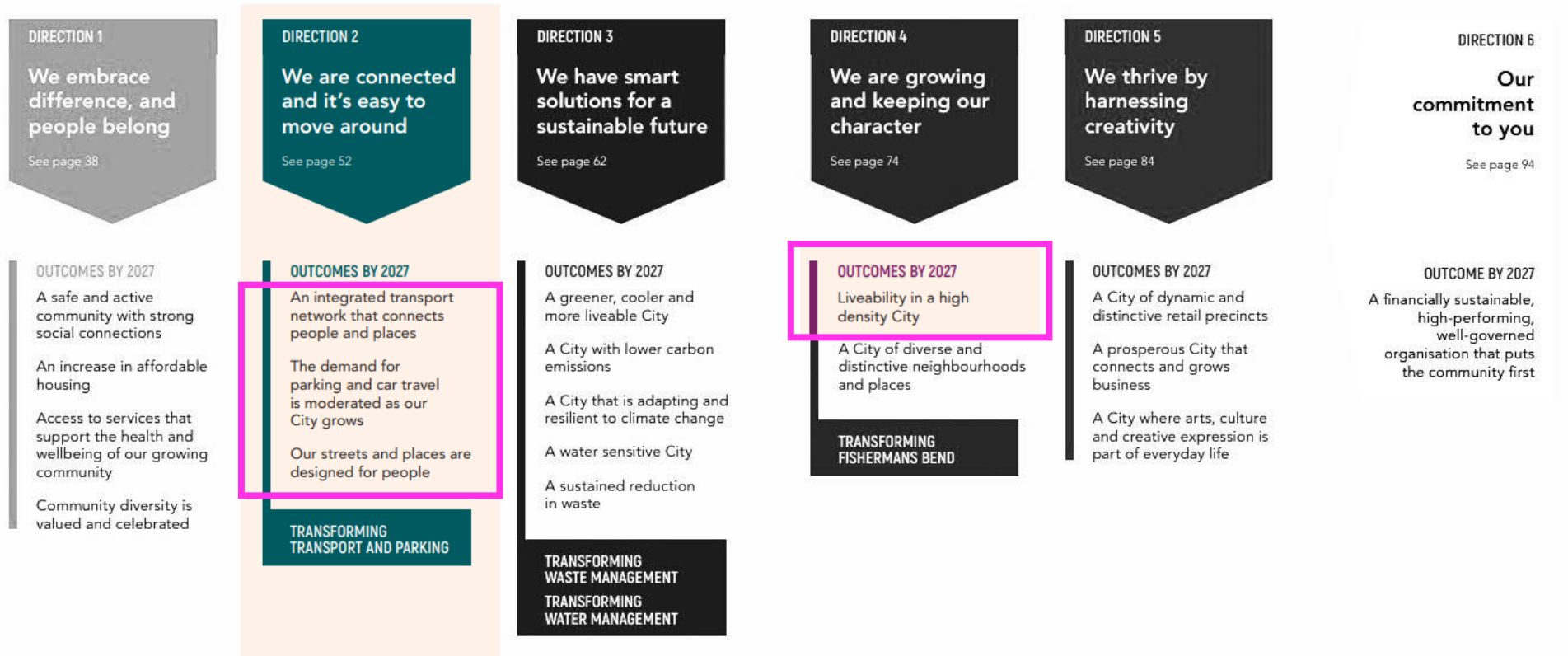
(Integrated Transport Strategy)

Domain CRG Presentation
July 2018



Background

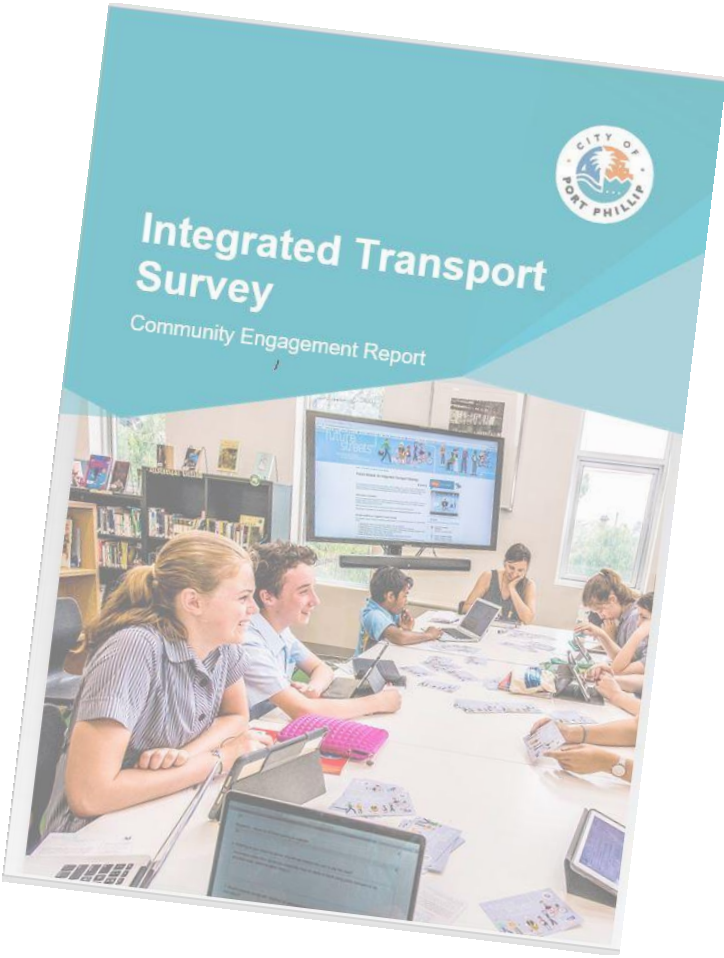
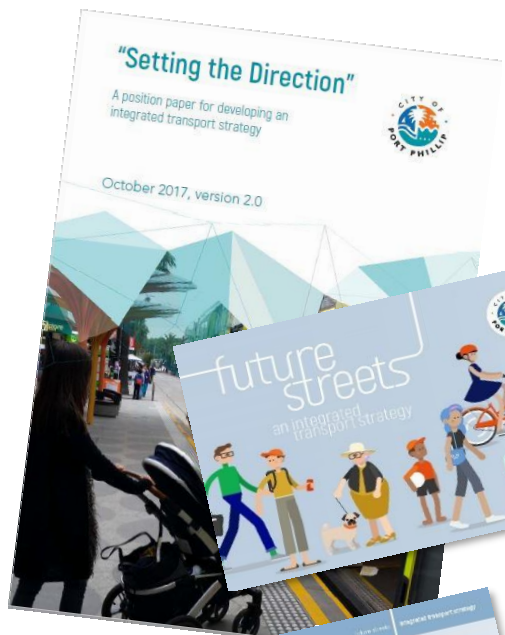
Draft MOVE, CONNECT, LIVE 2018-2028



2016



2017



What does MOVE, CONNECT, LIVE cover?

MOVE CONNECT LIVE

Easy for people to move around and connect with places in a way that suits them as the City grows

OUTCOMES

OUTCOME 1

Our City's transport network, streets and places cater for our growing community

OUTCOME 2

Our community is healthier because it has safe, connected and convenient walking and bike riding choices

OUTCOME 3

Our community has convenient public transport choices that make it easy to move and connect

OUTCOME 4

Our community understands that parking is a limited and shared resource, and works with Council to ensure fairest access

OUTCOME 5

Our community benefits from the new transport options to move around

FOCUS AREAS

FOCUS AREA

Ten Minute Neighbourhoods

FOCUS AREA

Space for walking, socialising and play

FOCUS AREA

Partnering to deliver reliable, accessible and more frequent public transport

FOCUS AREA

Improved parking management

FOCUS AREA

Harnessing rapid advancements in new technology

FOCUS AREA

Prioritising safety and access

FOCUS AREA

Boosting bike riding

ACTIONS

10 Year IMPLEMENTATION PLAN

4 Year DELIVERY PLAN 2019-2022

Targets – daily trips by 2028



- +36% in Walking trips



- +151% in Bike riding trips



- +35% in Public Transport trips



- 0% in Private Car trips (proportionate to pop growth)

Why is this important to you?

Consultation Process

- Scope of community consultation:
 - Have Your Say – online survey
 - Targeted community groups
 - 4 x Pop-ups @ markets
 - Sat 30 June – St Kilda Skate Park
 - Sun 8 July – South Melb Market
 - Sat 14 July – Elwood Farmers Market
 - Sat 21 July – Gasworks Farmers Market
 - Rickshaw Rides

Milestones

- 20 June - Council Meeting - release of Draft MCL
- 22 June–29 July – 5 week community engagement period
- 20 Sept – Council Meeting – seeking endorsement of final Move, Connect, Live

Questions?

Giving feedback:

Have Your Say -

<https://haveyoursay.portphillip.vic.gov.au/move-connect-live>

Email -

ITS@portphillip.vic.gov.au