



## CBD COMMUNITY REFERENCE GROUP

CROSS YARRA PARTNERSHIP  
25 OCTOBER 2019





## OCTOBER CBD COMMUNITY REFERENCE GROUP

---

**Blythe Chidgey**, Town Hall Station Stakeholder Engagement Manager, CYP D&C

**Melinda Kelly**, State Library Station Stakeholder Engagement Manager, CYP D&C

**Jodie Barrington**, CBD Precinct Lead, CYP D&C

**Michael Lavender**, Town Hall Station Traffic Engineer, CYP D&C

Friday 25 October 2019



Construction partner:



# AGENDA

1. State Library Station Update
2. Town Hall Station Update
3. Flinders Link Update
4. Traffic Update

# STATE LIBRARY STATION UPDATE





**TUNNELLING UPDATE**

MELBOURNE CITY BATHS

STATE LIBRARY

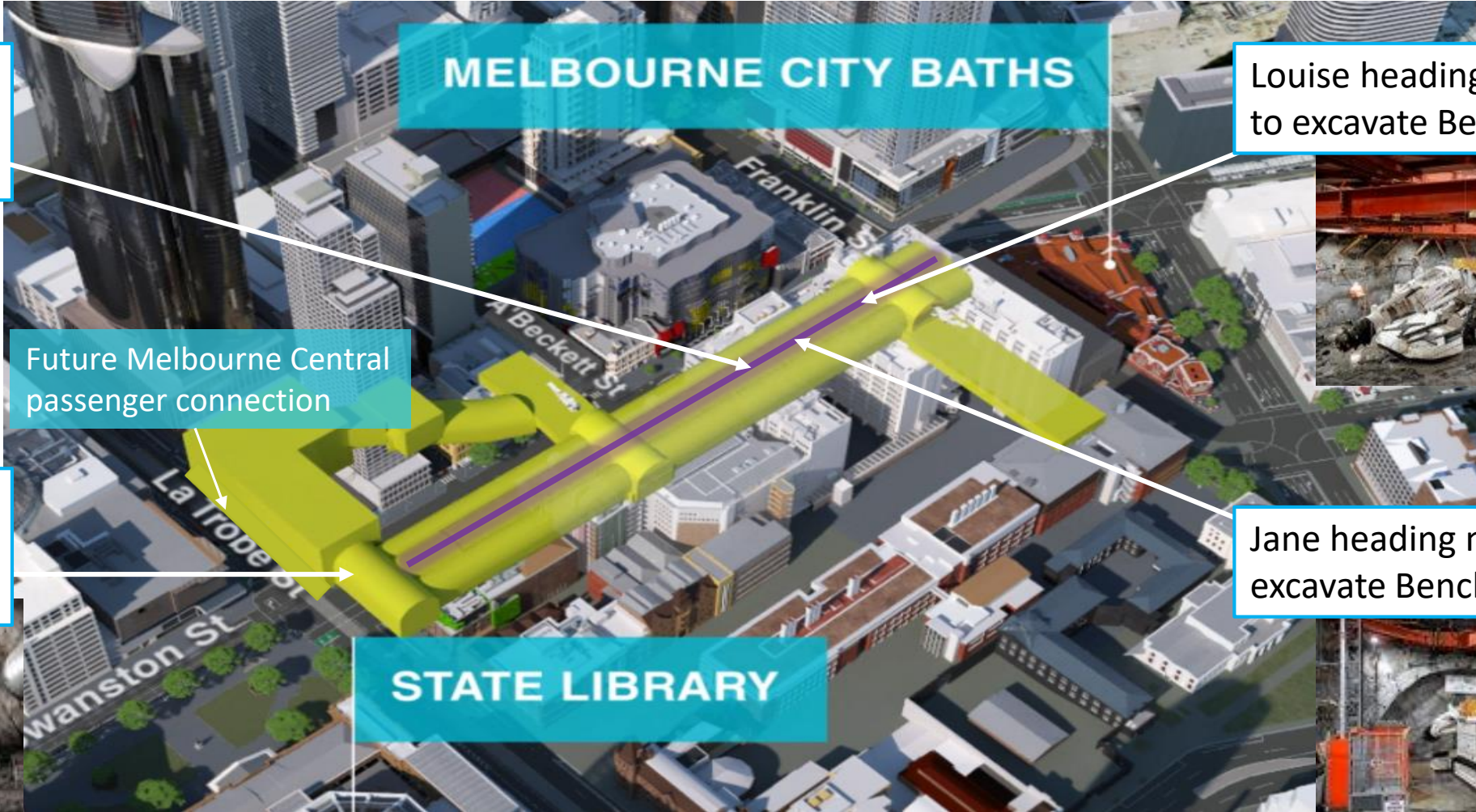
Central Cavern  
Top heading and  
Bench 1 complete

Future Melbourne Central  
passenger connection

Clara excavating  
remainder of La  
Trobe Adit

Louise heading south  
to excavate Bench 2

Jane heading north  
to excavate Bench 2





**PROGRESS**



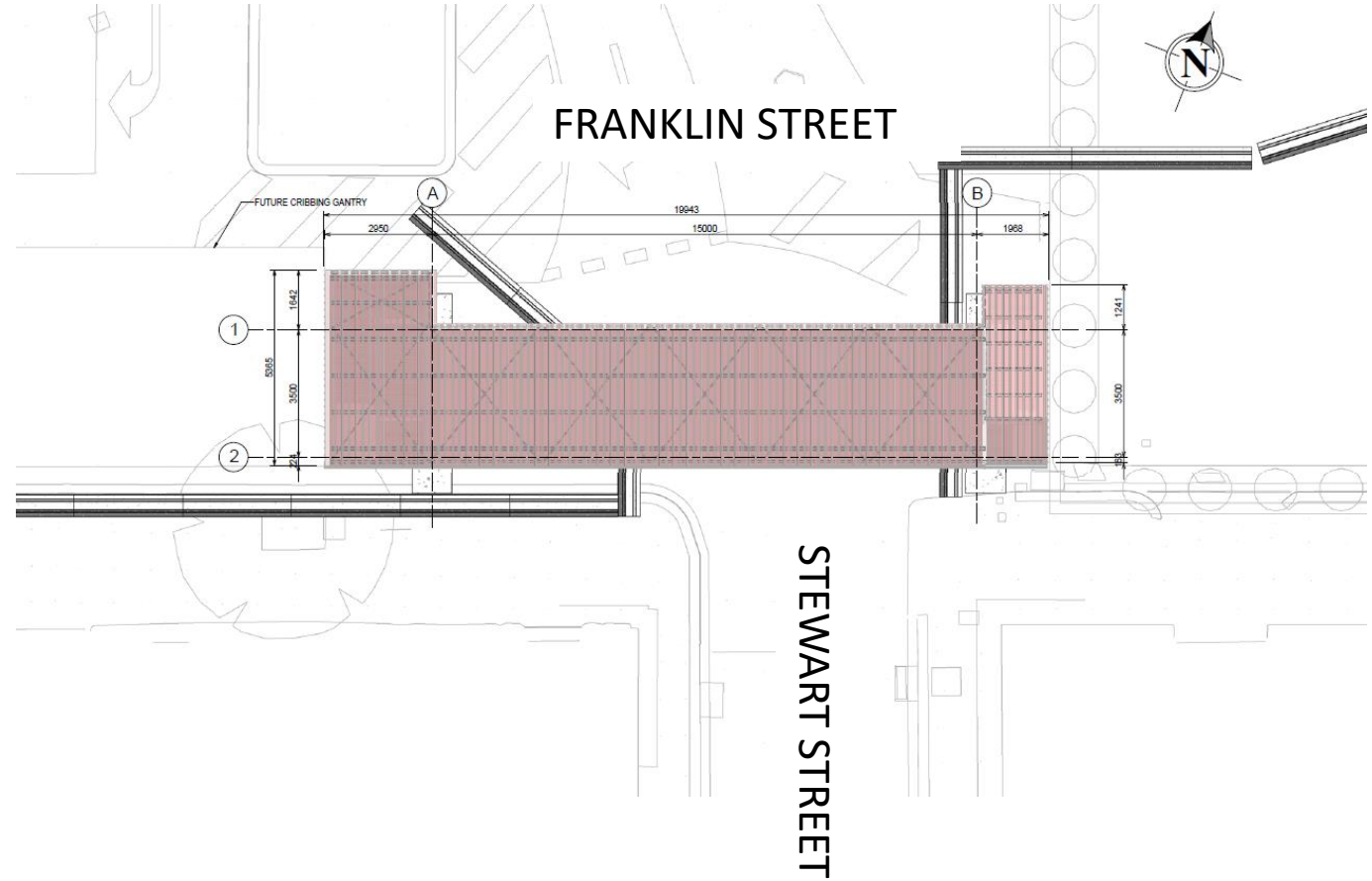
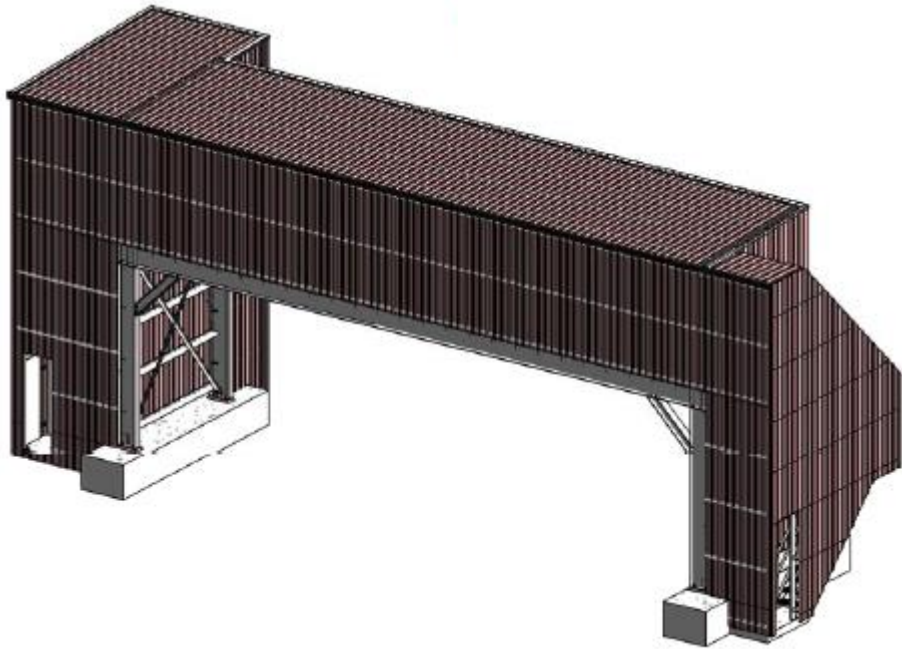
**PROGRESS**





## FRANKLIN STREET WEST UPDATE

# OVERHEAD GANTRY FRANKLIN STREET WEST



# FRANKLIN STREET WEST UPDATE

| Activity                          | Location    | Oct    | Nov    | Dec | Jan | Feb | Mar |
|-----------------------------------|-------------|--------|--------|-----|-----|-----|-----|
| Scaffold removal                  | Site        | ●————● |        |     |     |     |     |
| Acoustic shed construction        | Site        | ●————● |        |     |     |     |     |
| Shaft excavation                  | Site        |        | ●————● |     |     |     |     |
| Overhead gantry crane and walkway | Franklin St |        | ●————● |     |     |     |     |

## **Acoustic shed installation**

- Monday to Fridays, 7am to 6pm
- Saturdays, 7am to 5pm

## **Gantry crane delivery and assembly**

- Continuous work will be required from 8pm Thursday 7 November to 10am Saturday 9 November

## **Overhead gantry installation**

- Monday to Fridays, 7am to 6pm
- Saturdays, 7am to 5pm
- Overnight work will be required to lift the main gantry piece in late November

## **Traffic impacts**

- Eastbound lane closure, Franklin Street (Stewart to Swanston), Monday to Saturdays, 7am to 5pm
- Stewart Street intersection closure during crane delivery and installation
- Intermittent southern footpath closures during scaffold removal and cladding installations



**ACOUSTIC SHED**



**LITTLE LA TROBE STREET UPDATE**

# LITTLE LA TROBE STREET SITE UPDATE

| Activity | Oct | Nov | Dec | Jan | Feb | Mar |
|----------|-----|-----|-----|-----|-----|-----|
| Piling   |     |     |     |     |     |     |

## Stages of piling

1

### SETTING UP THE RIG

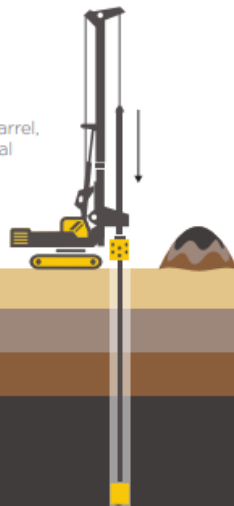
Deliver the rig to site and move it into position



2

### DRILLING

Drilling holes into the ground using a core barrel, and excavating material



3

### STEEL REINFORCEMENT

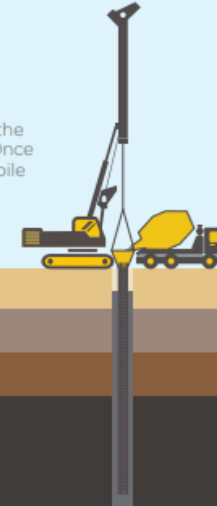
Removing the material and inserting a prefabricated steel reinforcement cage into the hole



4

### CONCRETE POURING WITH TREMIE PIPE

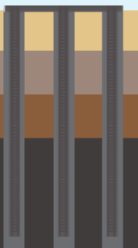
Pouring concrete into the hole to form the pile. Once the concrete sets, the pile is complete



5

### CAPPING THE PILES

Once the piles are constructed, the top layer of concrete is removed and topped by a capping beam to prevent lateral displacement.





Start of the pile top removal process



## LA TROBE STREET UPDATE



# LA TROBE STREET SITE UPDATE

| Activity  | Location | Oct   | Nov | Dec | Jan | Feb | Mar |
|---|----------|---|-----|-----|-----|-----|-----|
| Perimeter piling and plunge column installation | Site     |  |     |     |     |     |     |
| Temporary shaft removal                         | Site     |  |     |     |     |     |     |

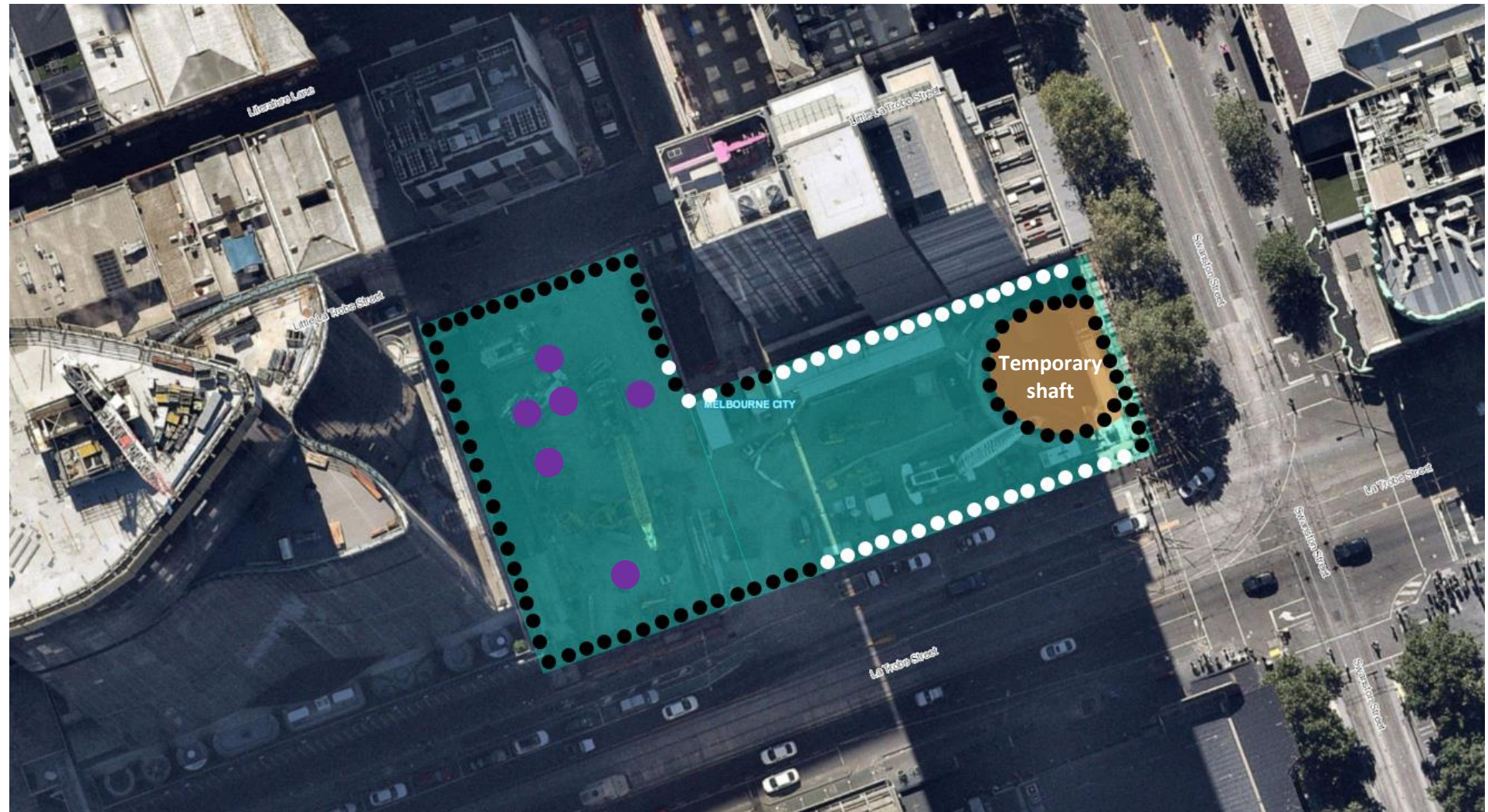
# LA TROBE STREET SITE PILING

## Perimeter piling ●

- 99 of 172 completed

## Plunge columns ●

- 6 of 56 plunge columns completed



- To prepare for excavation activities, plunge column installations are taking place at the La Trobe Street site
- As we excavate using a 'top down' methodology, permanent support columns, floor slabs and walls will be installed. The temporary plunge columns will then be removed.



# LA TROBE OUT OF HOURS WORKS

## **Piling and plunge column works**

- Monday to Fridays, 7am to 6pm
- Saturdays, 7am to 6pm
- *Concrete pours (as required)*, Monday to Fridays, 6pm to 10pm

## **Removal of temporary shaft**

- 24 hours, Monday to Saturdays

## **Tunnelling**

- Monday to Sundays, 24/7 ongoing

## **Gantry and tower crane installation**

- Monday to Fridays, 7am to 6pm
- Saturdays, 7am to 5pm
- Overnight work will be required to deliver and lift the main gantry piece, 1am-5am, Wednesday 30 October
- Additional overnight work will be required to deliver and install a tower crane

## **Oversized deliveries**

- 1am to 5am, as required

# QUESTIONS?



# TOWN HALL STATION UPDATE





## FLINDERS QUARTER

# FLINDERS QUARTER – SHAFT A



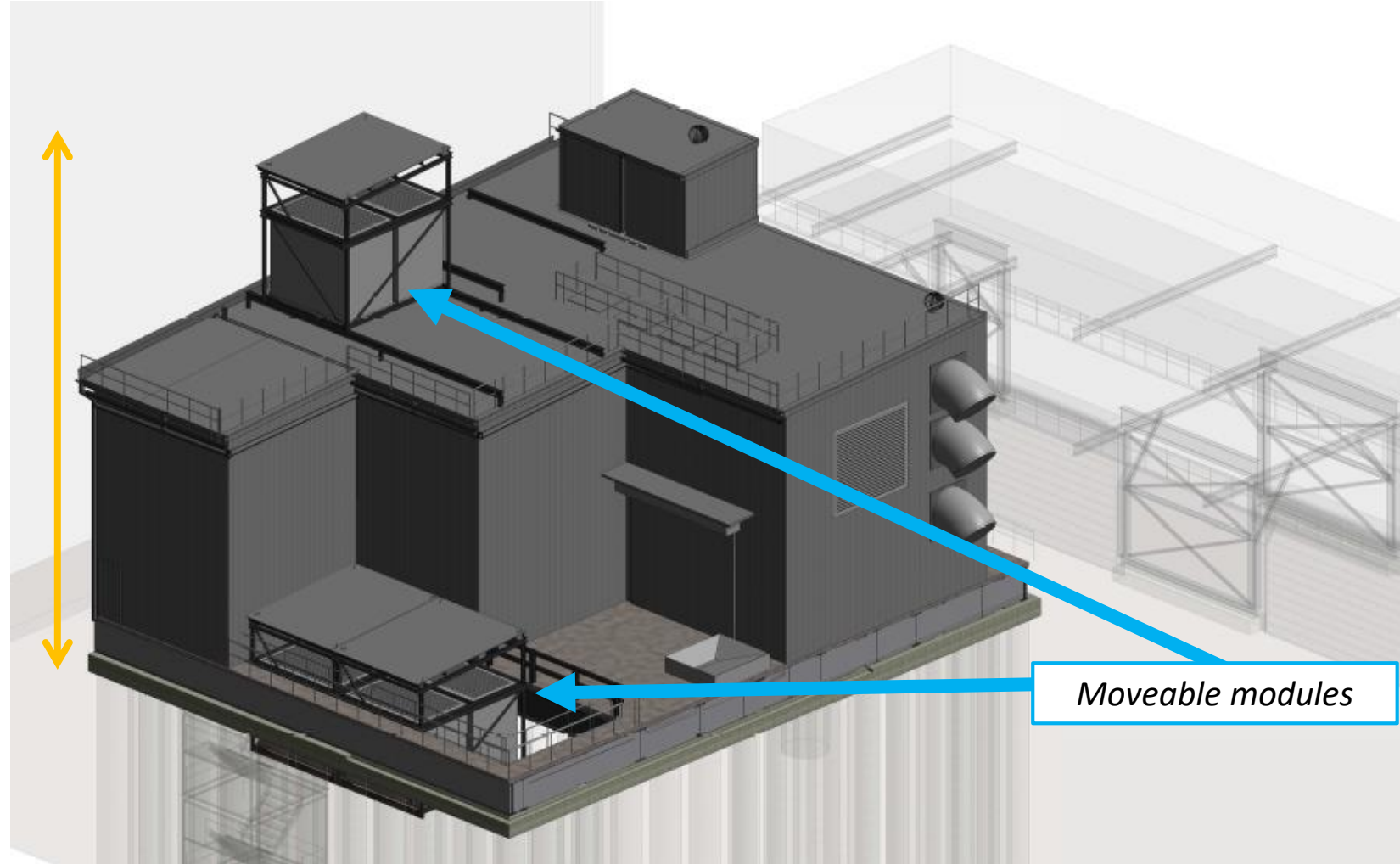
| Activity                     | Oct | Nov | Dec | Jan | Feb | Mar |
|------------------------------|-----|-----|-----|-----|-----|-----|
| Excavation                   | —●  |     |     |     |     | ●—  |
| Deck                         |     | —●  |     |     |     |     |
| Temporary acoustic enclosure |     |     |     | —●  |     |     |

Roadheader Tunnelling



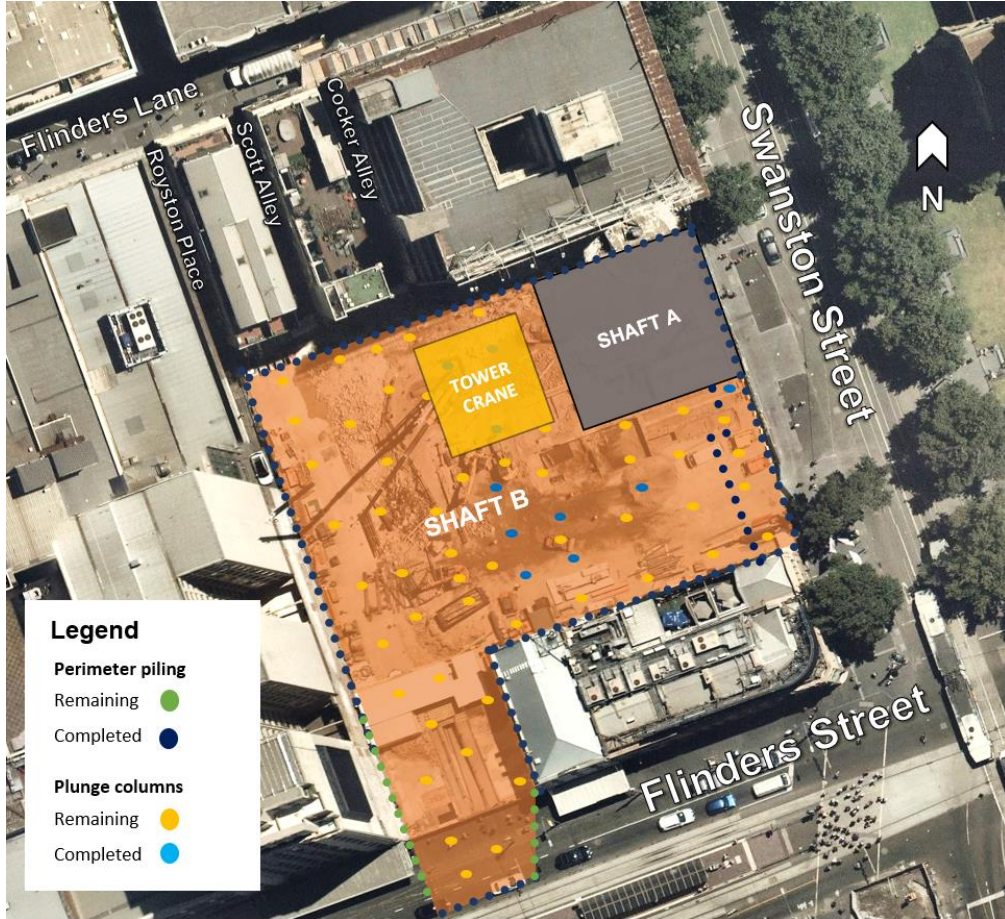
# ACOUSTIC ENCLOSURE - SHAFT A

10 METRES HIGH



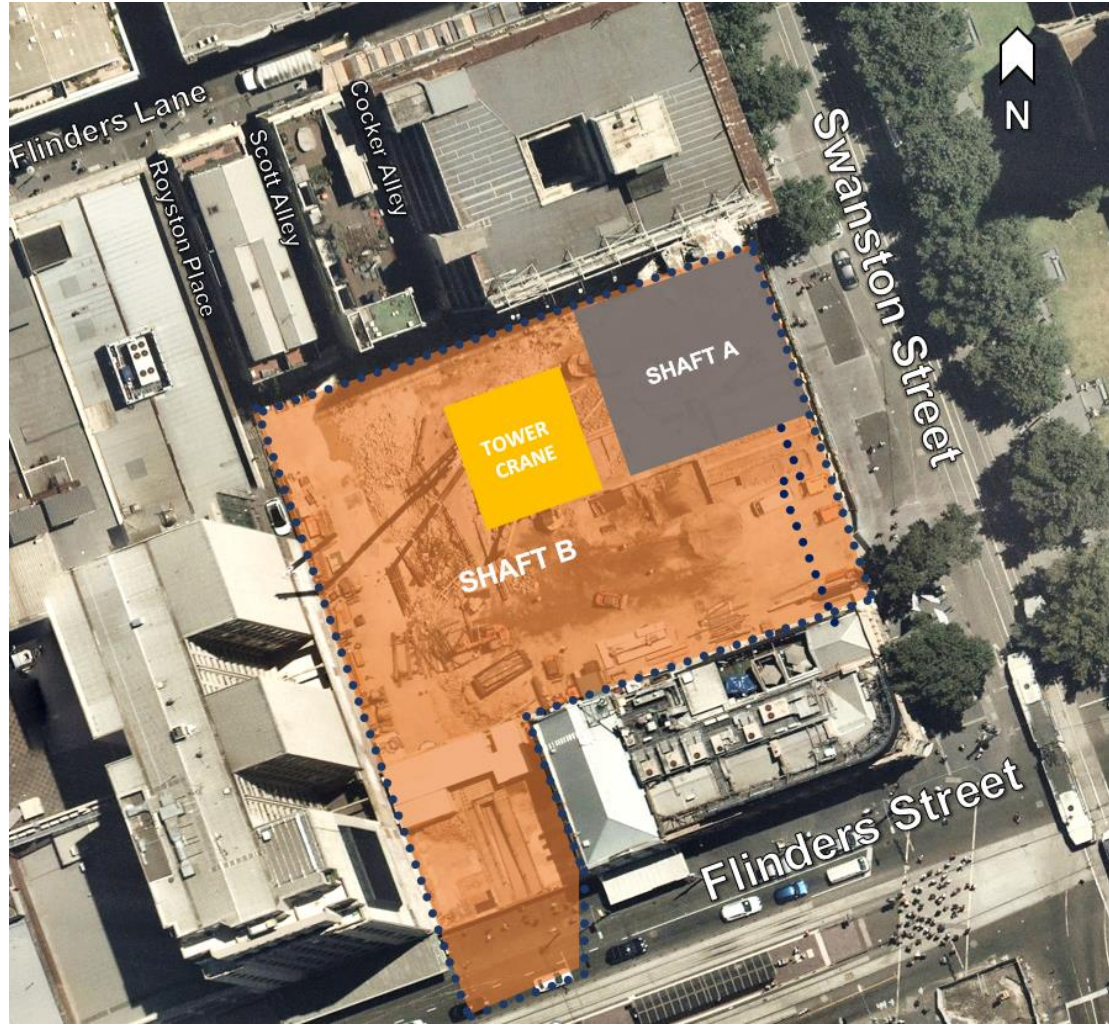
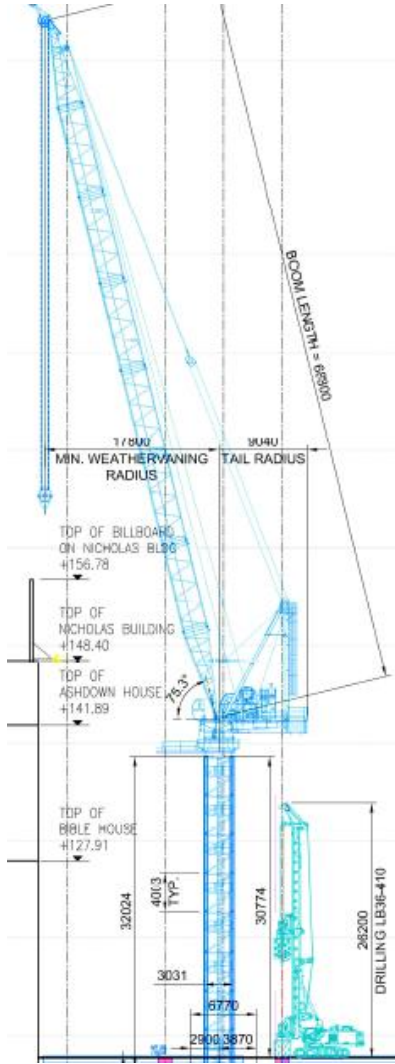
*Moveable modules*

# FLINDERS QUARTER- SHAFT B

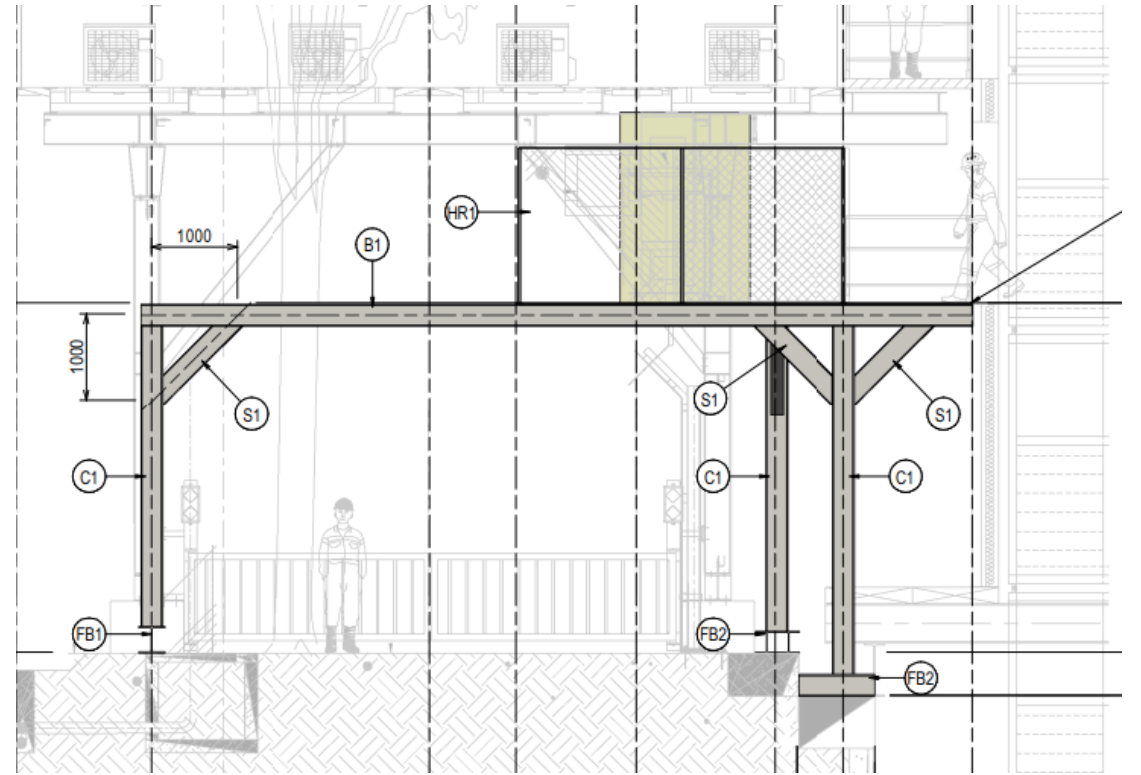
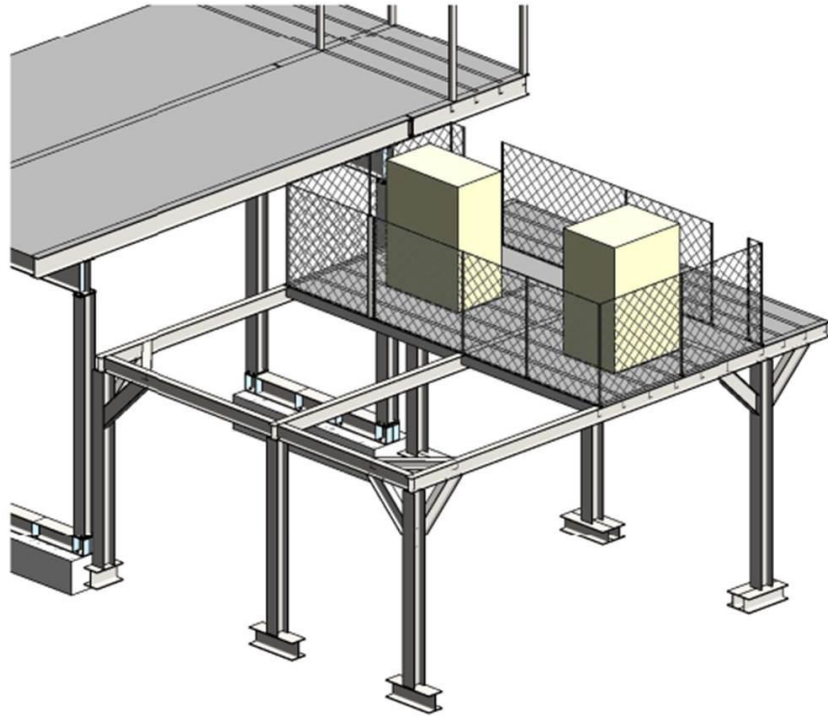


| Activity          | Oct    | Nov | Dec | Jan | Feb    | Mar |
|-------------------|--------|-----|-----|-----|--------|-----|
| Piling            | —————● |     |     |     |        |     |
| Plunge columns    | —————● |     |     |     |        |     |
| Tower Crane       |        | ●—● |     |     |        |     |
| Electrical Gantry |        |     |     | ●—● |        |     |
| Excavation        |        |     |     |     | ●————— |     |

# TOWER CRANE



# ELECTRICAL GANTRY



ELEVATION VIEW SWANSTON STREET

# FLINDERS QUARTER – OUT OF HOURS WORKS

## **Pile cage deliveries and spoil removal (ongoing)**

- Monday to Saturdays, 5am to 7am

## **Plunge piling and concrete coring**

- Monday to Fridays, 7am to 10pm
- Saturdays, 7am to 5pm

## **Shaft A Deck construction**

- Monday to Saturdays, 24 hours - *from mid-November*

## **Shaft A Excavation**

- Monday to Fridays, 7am to 10pm
- Saturdays, 7am to 5pm



**FLINDERS LINK**

# FLINDERS LINK WORKS UPDATE

| Activity               | Oct    | Nov    | Dec | Jan | Feb    | Mar |
|------------------------|--------|--------|-----|-----|--------|-----|
| Piling                 | —————● |        |     |     |        |     |
| Sewer relocation works |        | ●————● |     |     |        |     |
| Water relocation works |        | ●————● |     |     |        |     |
| Excavation             |        |        |     |     | ●————— |     |

# PILING UPDATE







**FEDERATION SQUARE**

# FEDERATION SQUARE WORKS UPDATE

| Activity                     | Location | Oct   | Nov    | Dec | Jan   | Feb | Mar |
|------------------------------|----------|-------|--------|-----|-------|-----|-----|
| Acoustic shed construction   | Internal |       | ●————● |     |       |     |     |
| Driveway egress construction | External | ●———● |        |     |       |     |     |
| Excavation                   | Internal | ————● |        |     | ●———— |     |     |

*Approximately  
5m remaining*

*Roadheader  
Tunnelling*

# FEDERATION SQUARE – OUT OF HOURS WORK

## **Excavation**

- Monday to Fridays, 24 hours
- Saturdays, 6am to 6pm
- Sundays, 6am to 6pm

## **Acoustic shed construction**

- Mondays to Fridays, 24 hours
- Saturdays, 6am to 6pm
- Sundays, 6am to 6pm



## CITY SQUARE

# CITY SQUARE WORKS UPDATE

| Activity              | Location | Oct   | Nov | Dec    | Jan | Feb | Mar |
|-----------------------|----------|-------|-----|--------|-----|-----|-----|
| Shaft Excavation      | Internal | ————— |     |        |     |     |     |
| Roadheader Tunnelling | Internal |       |     | ●————— |     |     |     |



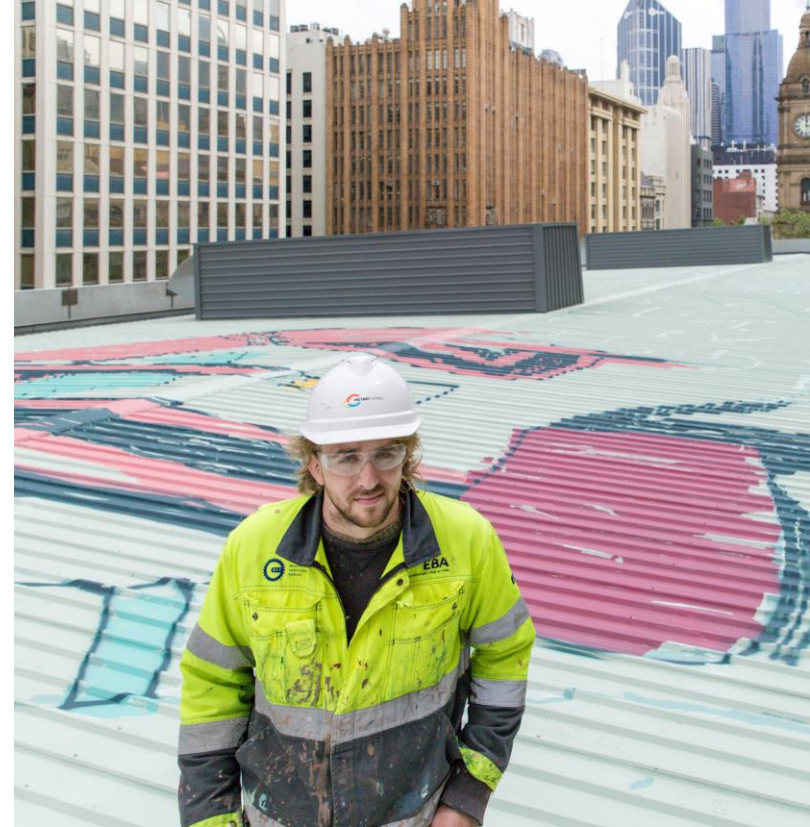
**Excavation depth:** Currently 17 metres below ground level

- Once a depth of 21 metres below ground level is reached the roadheader will commence tunnelling
- The shaft will reach a total depth of 35 metres deep

# ACOUSTIC SHED COMPLETION



# PAT PERRY ART INSTALLATION



*Once the acoustic shed artwork is complete a publicly visible and accessible artwork will also be painted on the Westin Hotel driveway*



# CITY SQUARE – OUT OF HOURS WORKS

## **Low noise works within the acoustic shed**

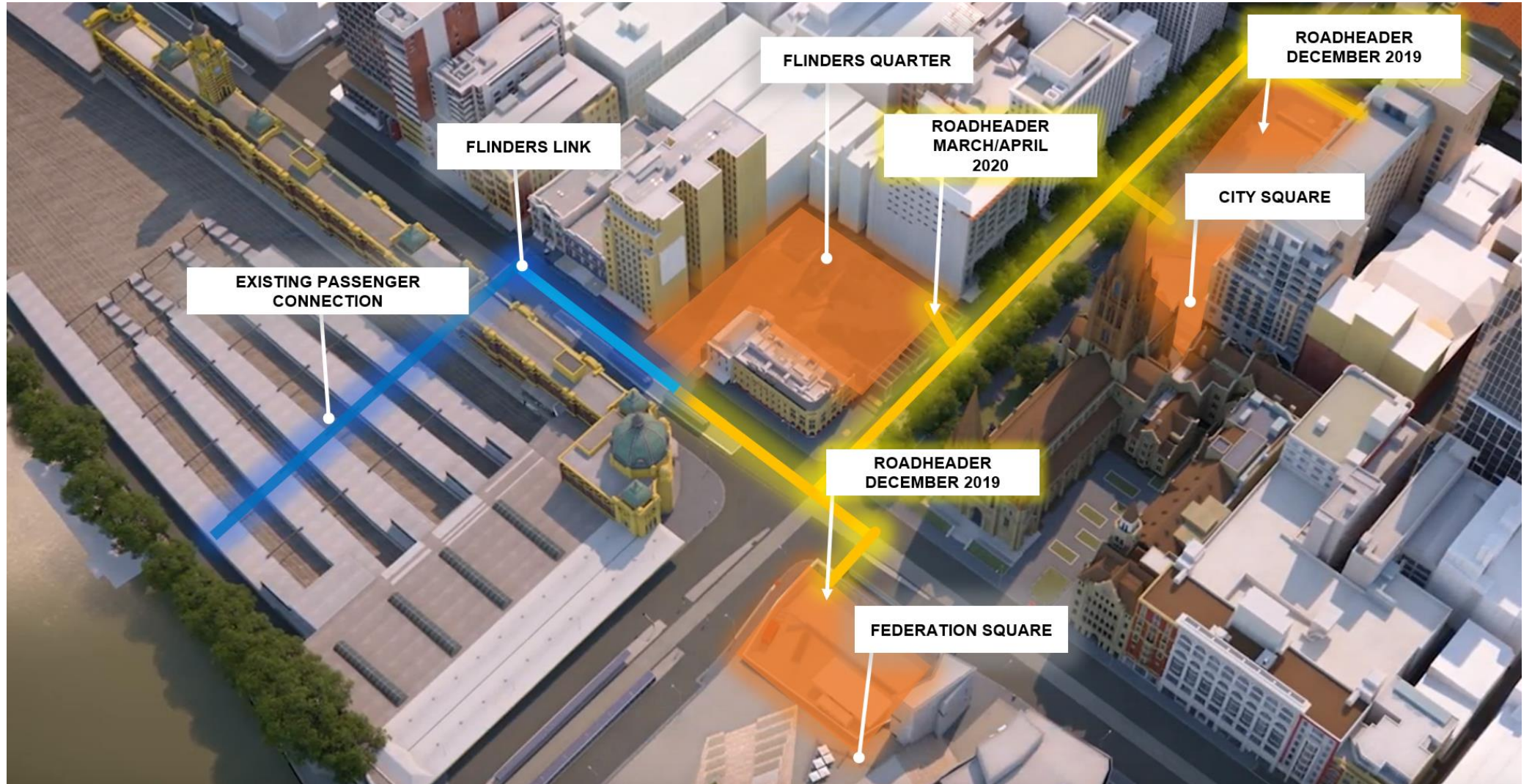
- Monday to Fridays, 24 hours – *Installation of sound proofing panels*
- Saturdays, 7am to 4pm – *Some quiet clean up activities may continue until 6pm*
- Sundays, 9am to 5pm

## **Excavation**

- Monday to Fridays, 7am to 10pm
- Monday to Fridays, 24 hours – *Once the acoustic shed is sound-proof*
- Saturdays, 7am to 4pm – *Some quiet clean up activities may continue until 6pm*
- Sundays, 9am to 5pm



# WELCOME THE ROADHEADERS TO CBD SOUTH



# TRAFFIC UPDATE



# UPCOMING TRAFFIC IMPACTS



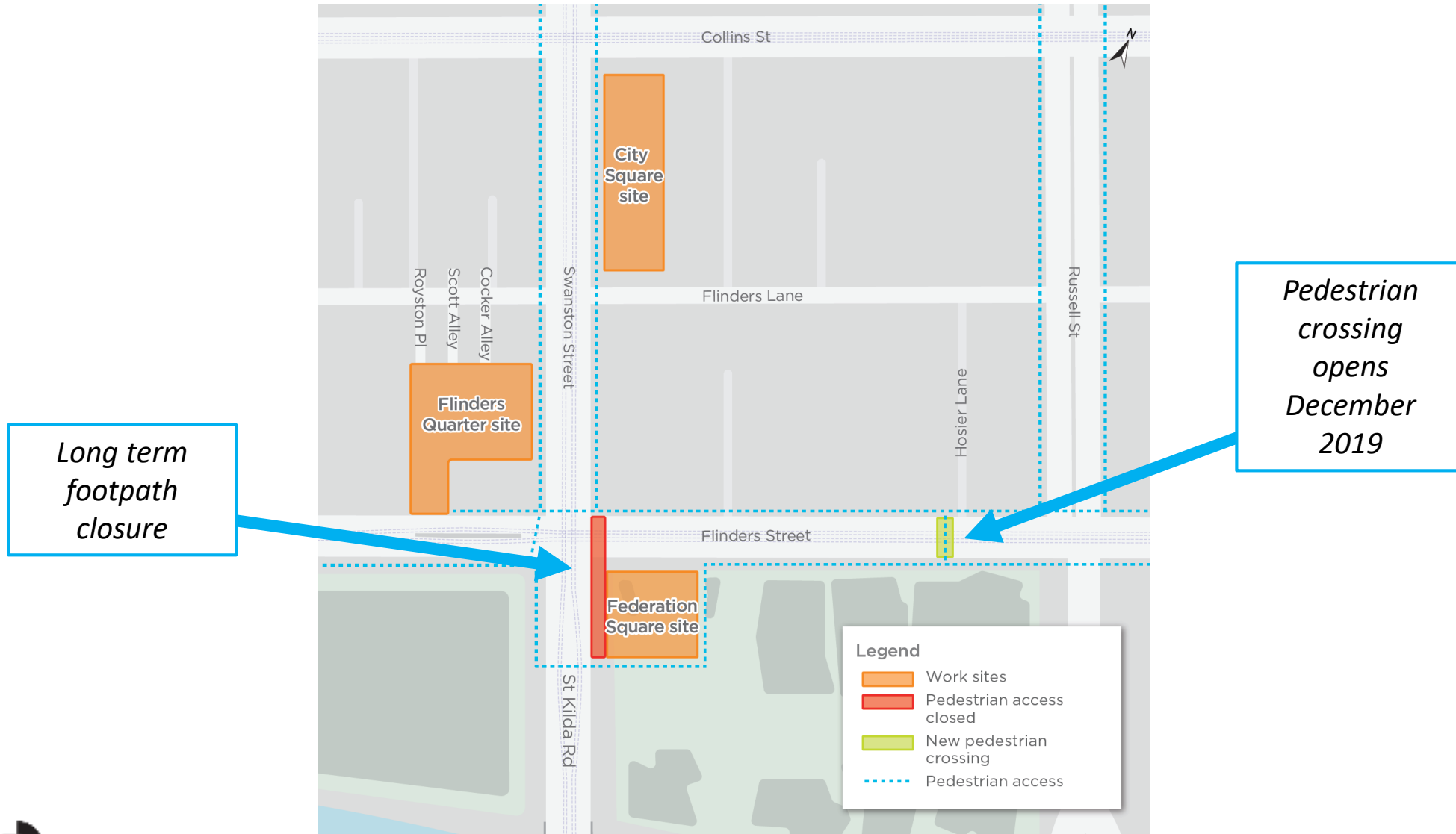
**Sewer relocation works**  
 6-14 November  
 North-South crossing closure  
 10pm-5am

**Driveway construction works**  
 2 weeks  
 Footpath closure  
 10pm-5am

**Footpath Changes – Kerb extension**  
 17-28 November  
 10pm-5am

**Pedestrian crossing opens**  
 December 2019

# LONG TERM TRAFFIC ARRANGEMENT



# QUESTIONS?



# WE'RE TAKING A BREAK

## MELBOURNE CUP WEEKEND

- The Metro Tunnel Project will take a break from Saturday 2 November returning Thursday 7 November 2019

## CHRISTMAS

- The Metro Tunnel Project office will take a break from 5pm Friday 20 December returning Monday 6 January 2020
- The Metro Tunnel site teams will take a break from 5pm Friday 20 December returning Monday 13 January 2020

*During the closure periods, the sites will be secured with regular security patrols.*