



# TOWN HALL STATION COMMUNITY REFERENCE GROUP

CROSS YARRA PARTNERSHIP  
FRIDAY 17 JULY 2020



Construction partner:





## TOWN HALL STATION COMMUNITY REFERENCE GROUP

---

**Jodie Barrington**, CBD Precinct Lead, CYP D&C

**Blythe Chidgey**, Town Hall Station Stakeholder Engagement Manager, CYP D&C

**Mary Parker**, Director Communications and Creative, Project Co



Construction partner:

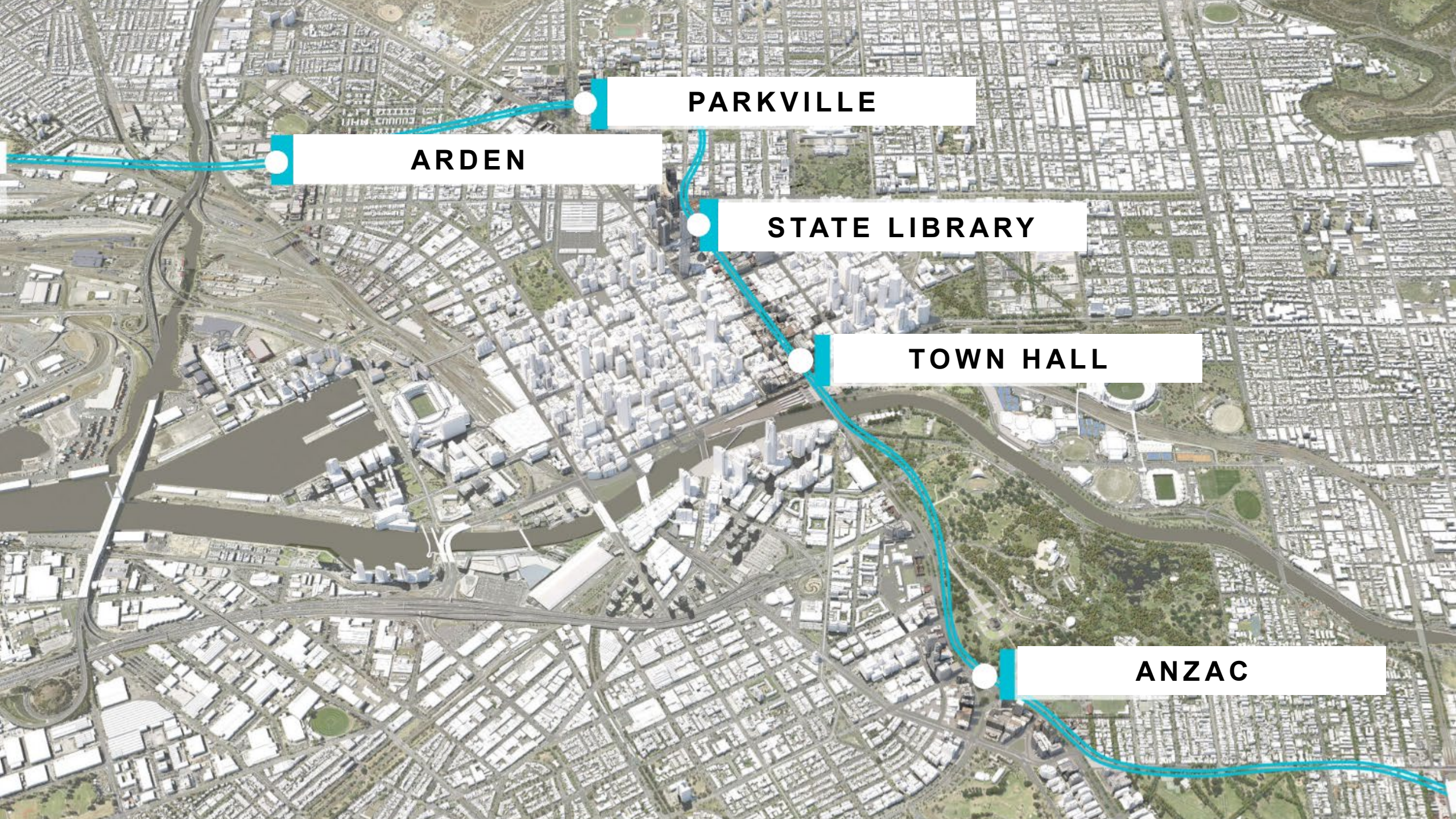


# AGENDA

1. Project overview
2. Town Hall Station update
3. Creative Program update

# PROJECT OVERVIEW





**ARDEN**

**PARKVILLE**

**STATE LIBRARY**

**TOWN HALL**

**ANZAC**





# STATE LIBRARY



The first major concrete pour occurred at the La Trobe Street site earlier this month.

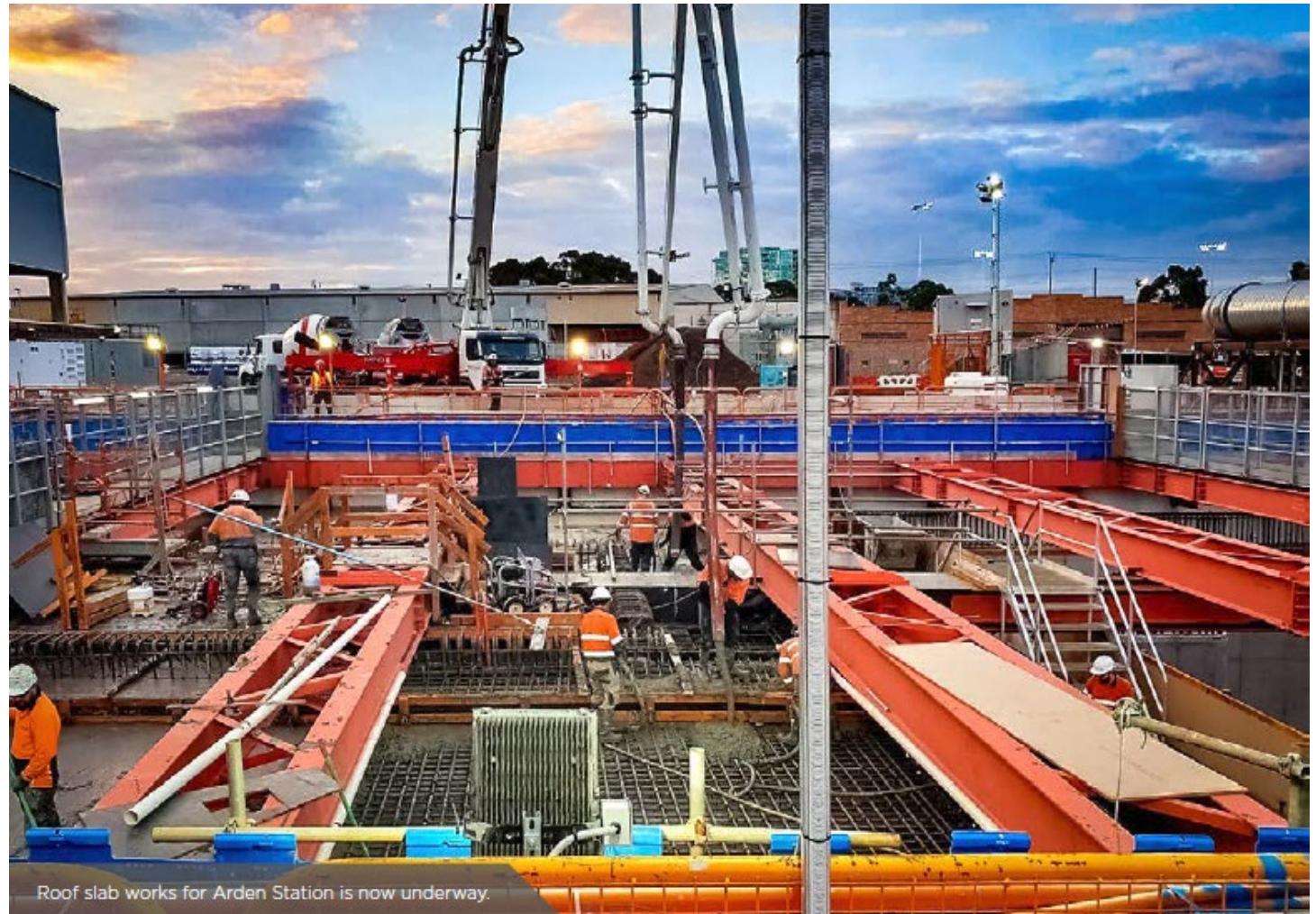
Almost 700 cubic metres of concrete has now been poured, forming sections of the permanent base floor slab.



# ARDEN

At Arden Station, the first concrete pour of the suspended roof slab is now complete, an exciting milestone marking the start of construction of the station roof.

The 600 cubic metre pour was the first of 11 roof slab pours that will be completed between now and April next year.



# PARKVILLE

The next phase of construction at Parkville has begun with the commencement of piling works at Grattan Street west for the station entrance adjacent to the Peter MacCallum Cancer Centre.

At the Grattan Street east site, the station base slab is now complete. This pour required over 8,000 cubic metres of concrete and 2500 tonnes of steel reinforcement.



Grattan Street West



# ANZAC

The two TBMs working in the East, Alice and Millie, are making significant progress on their way to the Eastern Portal in South Yarra.

Both TBMs are now installing permanent segments.



# ROADHEADER TUNNELLING





**TOWN HALL STATION**  
BREAKTHROUGH 26 JUNE 2020



**JOHN  
HOLLAND**









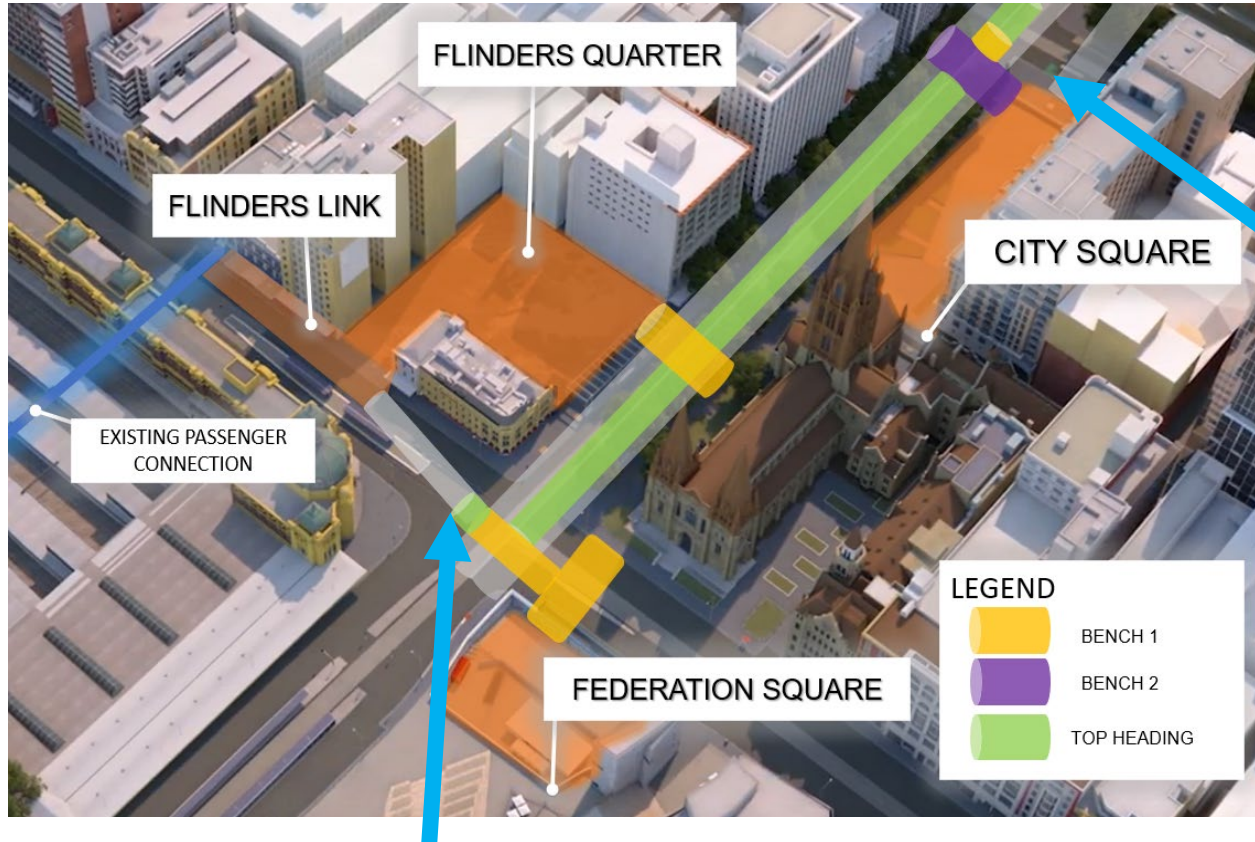


**TOWN HALL STATION**  
BREAKTHROUGH 26 JUNE 2020





# ROADHEADER TUNNELLING UPDATE



Excavation of the Flinders fire egress has commenced

Roadheader Melinda will soon commence excavation of the City Square fire egress adit (travelling north)

Collins Street adit – Bench 2 complete



Excavation of the central caverns top heading is now complete.

# TOWN HALL STATION UPDATE

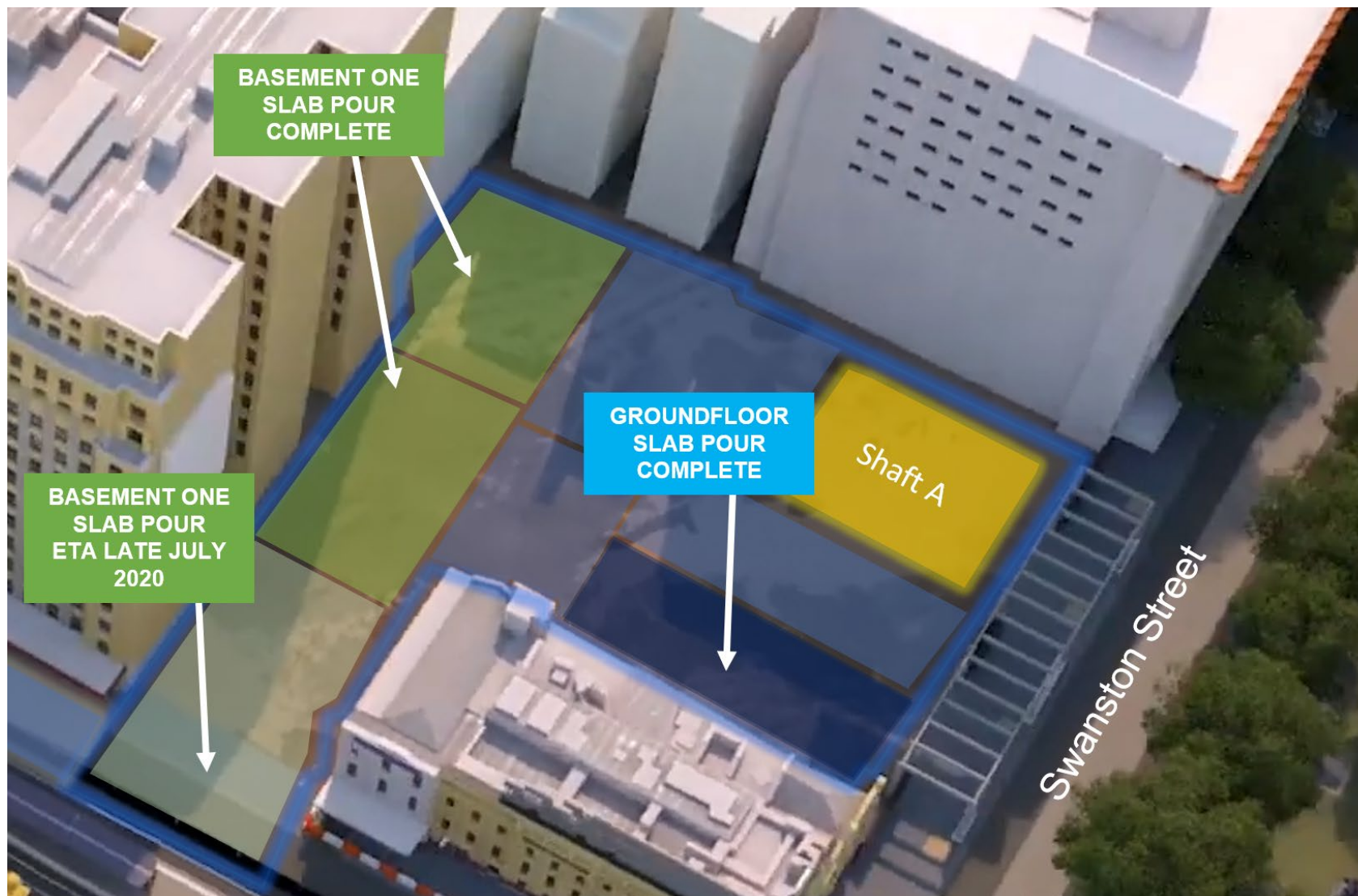




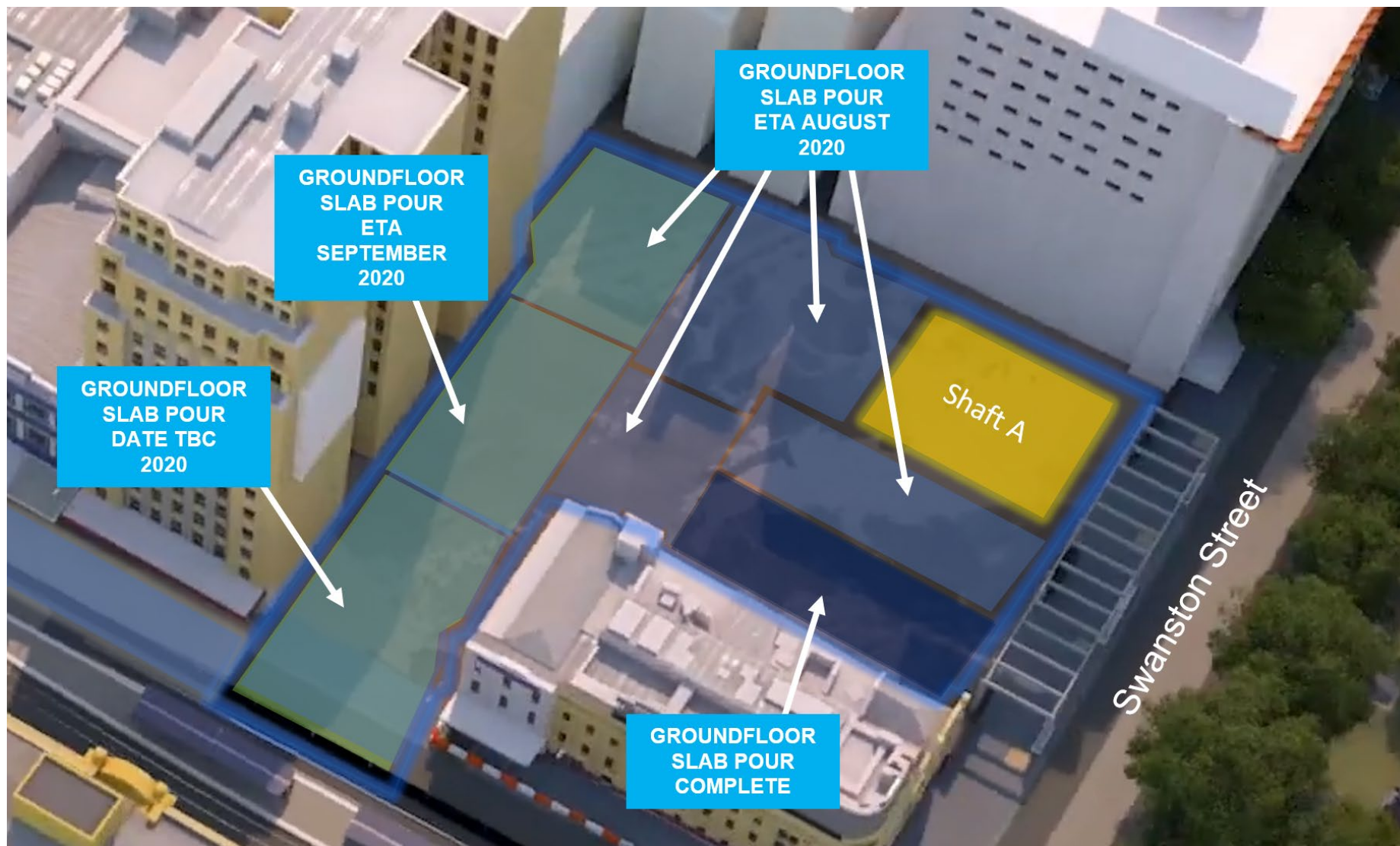
## FLINDERS QUARTER



# CONCRETE POURS JULY 2020 PROGRESS



# CONCRETE POURS LOOK AHEAD 2020



# FLINDERS QUARTER – SHAFT A

## Flinders Quarter tunnelling and excavation

- 24 hours, Monday to Sunday

Activity	Jul	Aug	Sep	Oct	Nov	Dec
Roadheader tunnelling						



# FLINDERS QUARTER- SHAFT B

Activity	Jul	Aug	Sep	Oct	Nov	Dec
Excavation						
Top down construction						
Hoarding removal and reinstatement works						

# FLINDERS QUARTER – OUT OF HOURS WORKS

## **Deliveries (ongoing)**

- Monday to Saturday, 5am to 7am
- Monday to Friday, 6pm to 10pm

## **Steel fixing, waterproofing and formwork installation (Shaft B)**

- Monday to Friday, 7am to 10pm
- Sundays, 8am to 4pm

## **Permanent concrete structure installation (Shaft B)**

- Monday to Friday, 7am to 10pm
- Saturdays, 7am to 1pm
- Intermittently, from 6pm to 7am

## **Tunnelling and excavated material removal (Shaft A)**

- Monday to Sunday, 24 Hours
- 7am to 10pm - Including the use of excavators and a tower crane





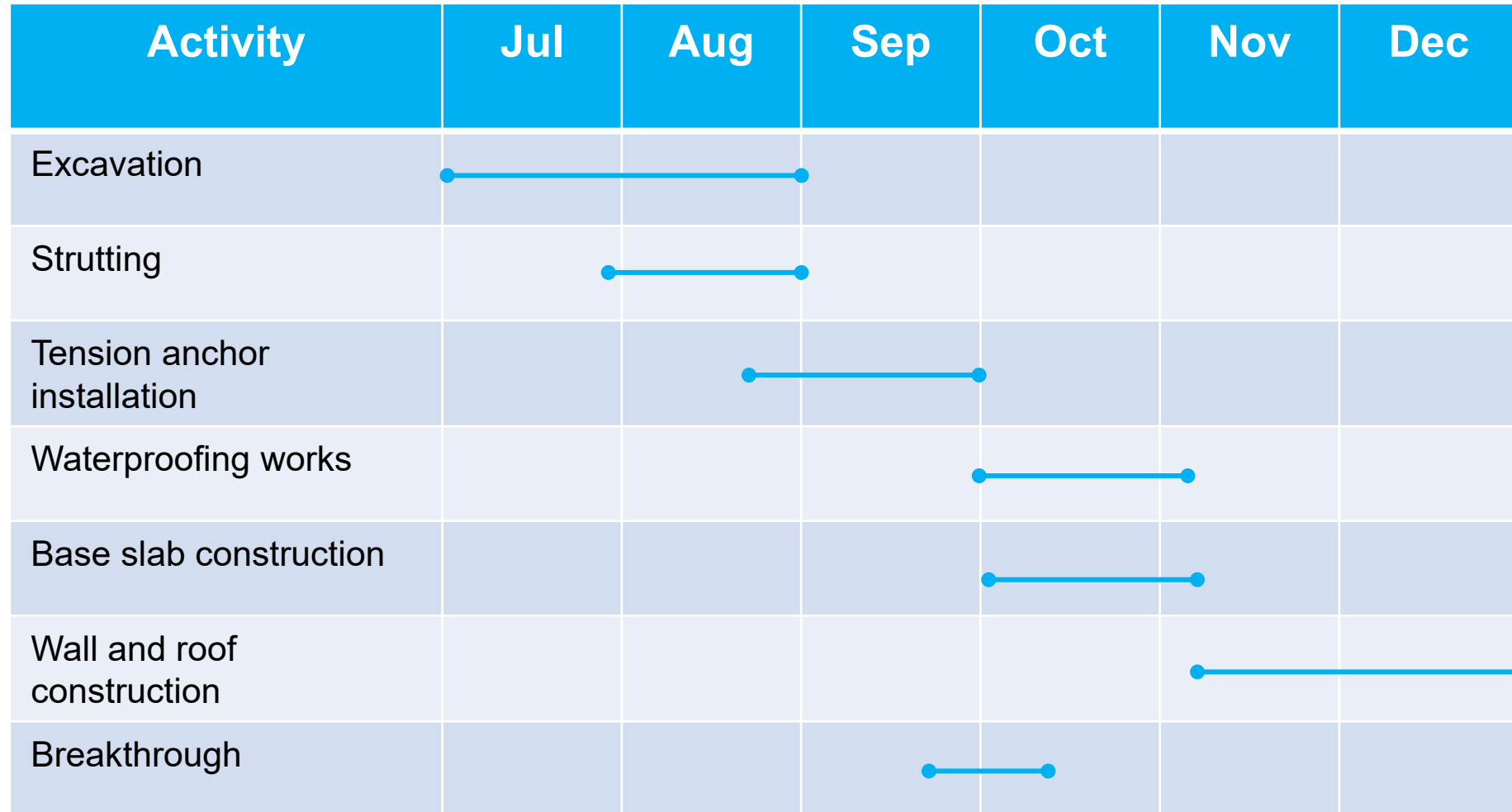
**FLINDERS LINK**



# FLINDERS STREET OCCUPATION SUCCESS



# FLINDERS LINK WORKS UPDATE







# FEDERATION SQUARE

# FEDERATION SQUARE WORKS UPDATE



## Federation Square tunnelling and excavation

- 24 hours, Monday to Sunday

Activity	Jul	Aug	Sep	Oct	Nov	Dec
Excavation						
Roadheader tunnelling						





**CITY SQUARE**





## City Square tunnelling and excavation

- 24 hours, Monday to Sunday

Activity	Jul	Aug	Sep	Oct	Nov	Dec
Shaft excavation						
Roadheader Tunnelling						

# QUESTIONS?

# CREATIVE PROGRAM UPDATE



# METRO TUNNEL CREATIVE PROGRAM

---

CBD CRG update

July 2020



**Creative  
Program**



# • ARTIST POOL – CALL FOR REGISTRATIONS



- 1600 submissions
- Total pool of around 1000
- Advertised on Arts Hub, Koori Mail
- Numerous social media posts and shares
- Creative Program will use the pool to commission 60 new works in the next six months



# TOWN HALL

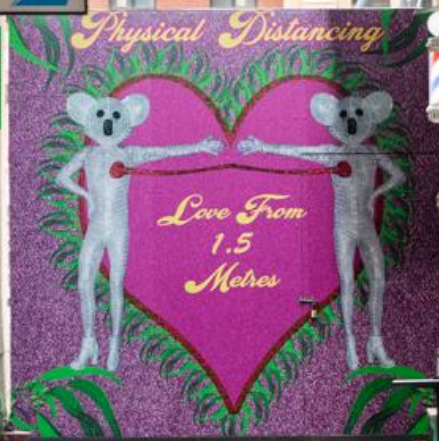


239

BUYING GLASSES SHOULD BE ONE OF LIFE'S PLEASURES. WE'VE CREATED A FORMULA  
CLEVER AND CRAFT EYEWEAR  
BEAUTIFUL PASSIONATE  
GENUINE NOT ROCKET SCIENCE  
CARING  
TO DO IT RIGHT STRIVE  
O DELIVER FANTASTIC EYEWEAR  
REASONABLE PRICE BACKED UP BY  
GREAT SERVICE VISION TO CHANGE  
GLASSES INDUSTRY POSITIVELY  
EMPOWER INDIVIDUALITY  
SELF-EXPRESSION  
BEAUTIFUL AFFORDABLE EYEWEAR  
INVITING SERVICE INCREDIBLE PEOPLE.  
THAT'S BAILEY NELSON



RELIC



241



Opening Hours  
Monday - Friday









# • FEDERATION SQUARE



- Shed treatment currently on hold
- Fed Square's 'Virtual Square' contains previously unseen timelapse footage of construction
- Working with Fed Square, City of Melbourne and ACMI to support Xmas activations and reopening of ACMI





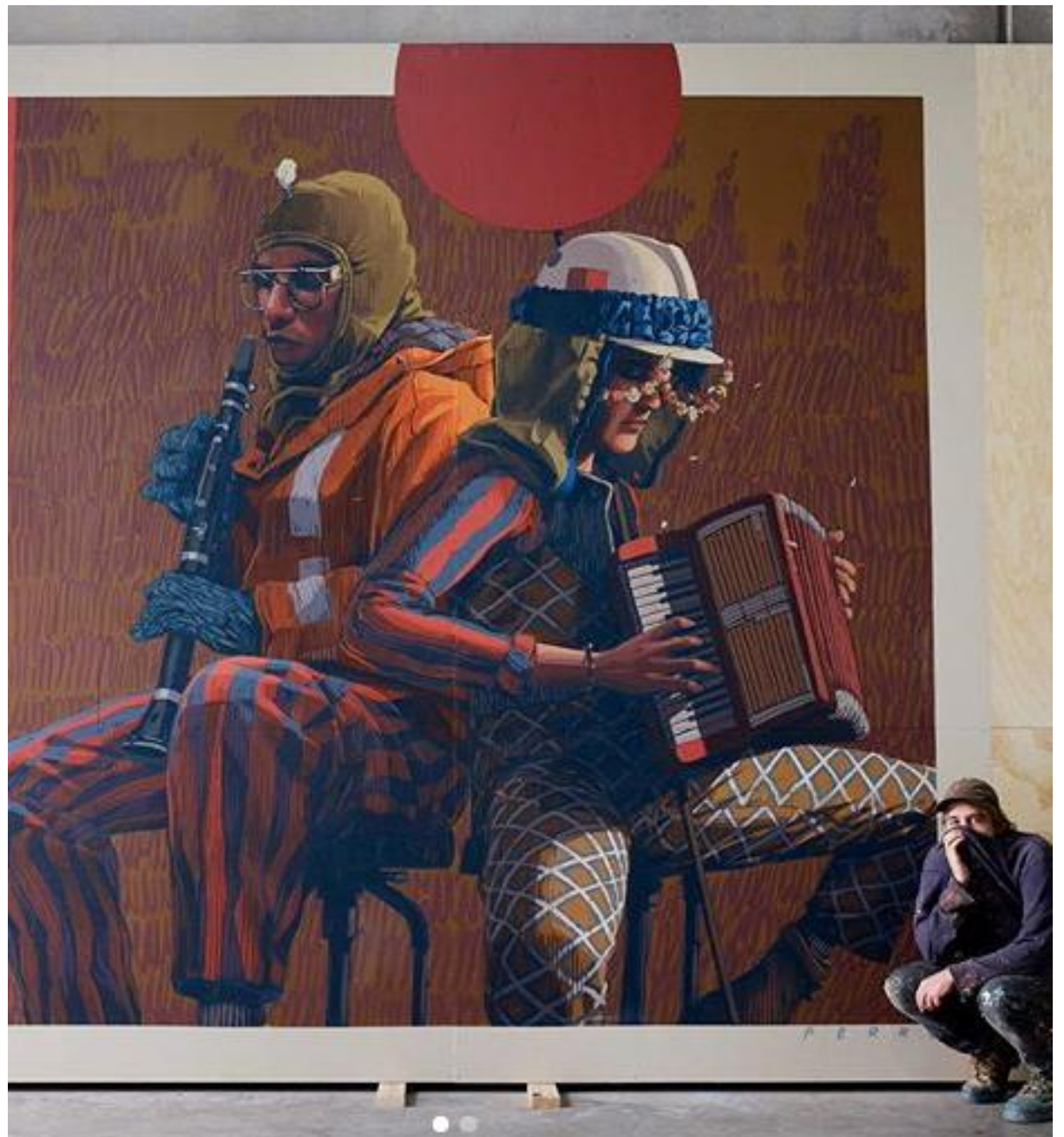














- NIXI KILICK FOR MELBOURNE FASHION WEEK
- OCTOBER 2020







**STATE LIBRARY**

- LITERATURE LANE





- LITTLE LA TROBE





STREET ART BASED MURAL APPLICATIONS





# • CBD NORTH CONCRETE PUMP









- ‘HERE AND NOW’





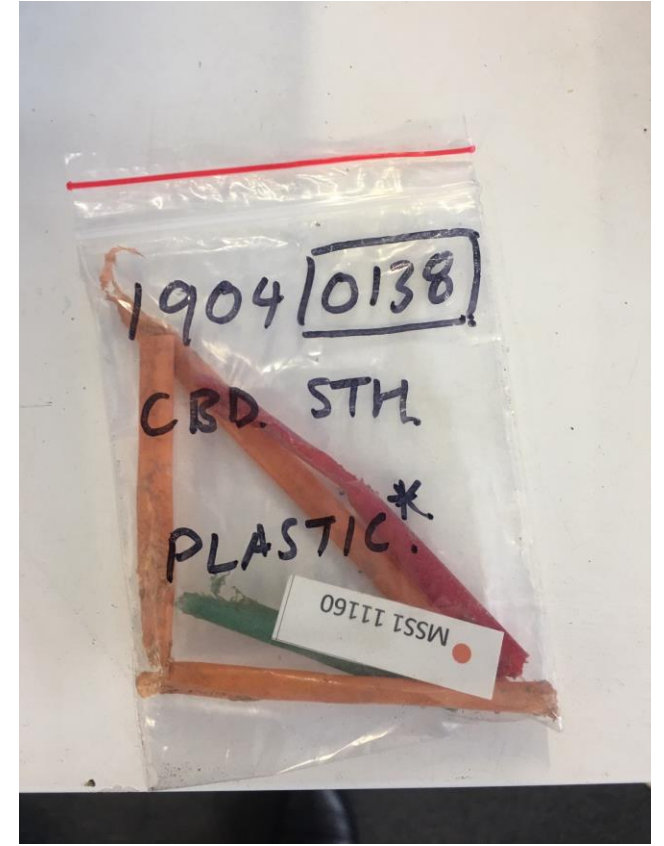






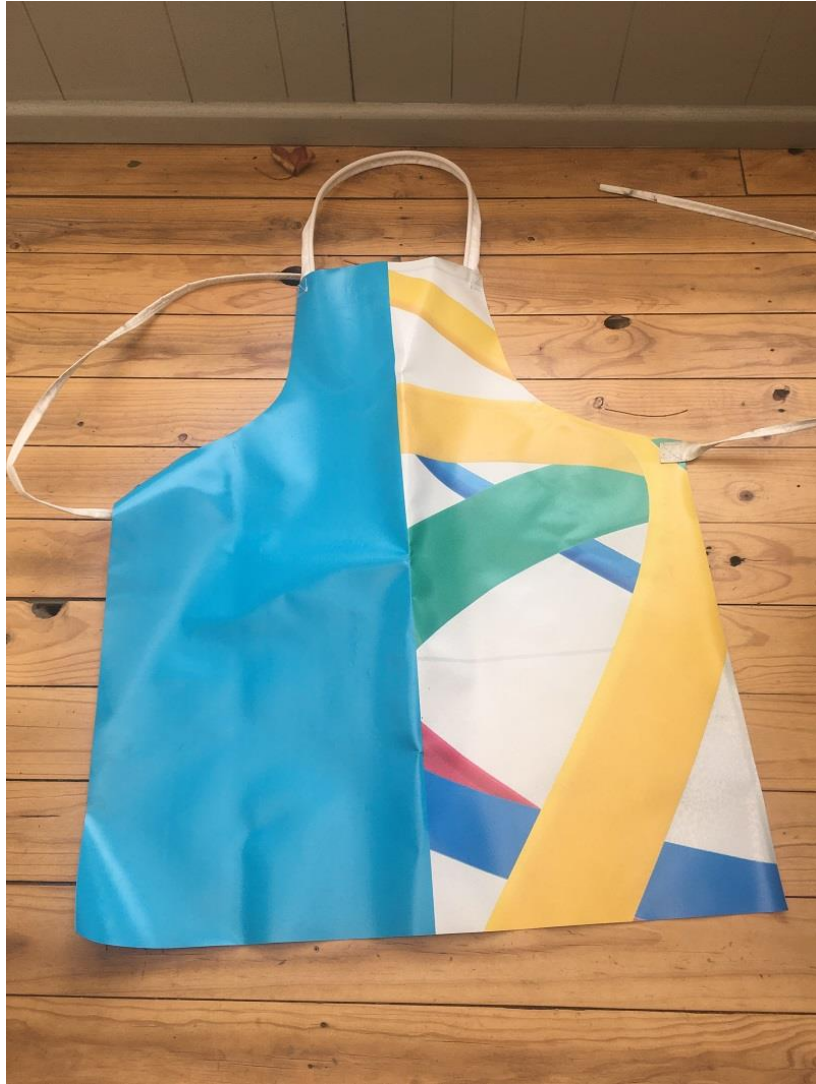
**OTHER COOL STUFF**

# • ARCHAEOLOGY DISCARDS





## • BAGS & BBQ APRONS





# QUESTIONS