



DOMAIN COMMUNITY REFERENCE GROUP

Meeting #10

Wednesday 3 October 2018, Seasons Botanic Gardens



Construction partner:





INTRODUCTION



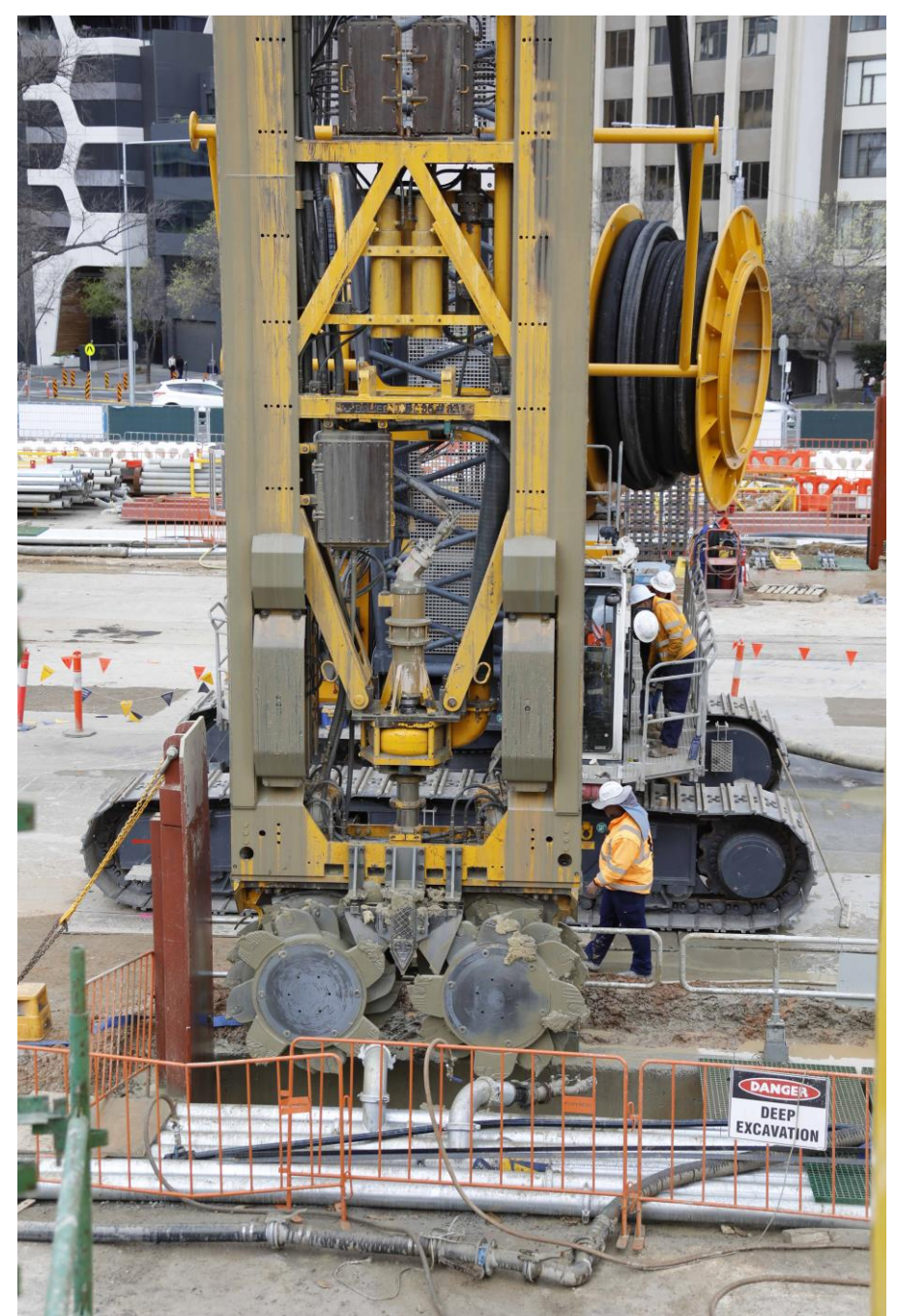
CROSS YARRA PARTNERSHIP

OCTOBER WORKS UPDATE

CURRENT AND UPCOMING WORKS

NORTHERN BOX

- D-Wall works (ongoing)
- Pedestrian covered walkway near Melbourne Grammar School
- Geotechnical investigations on Dorcas Street, Park Street and Albert Road to install ground water monitors (ongoing)



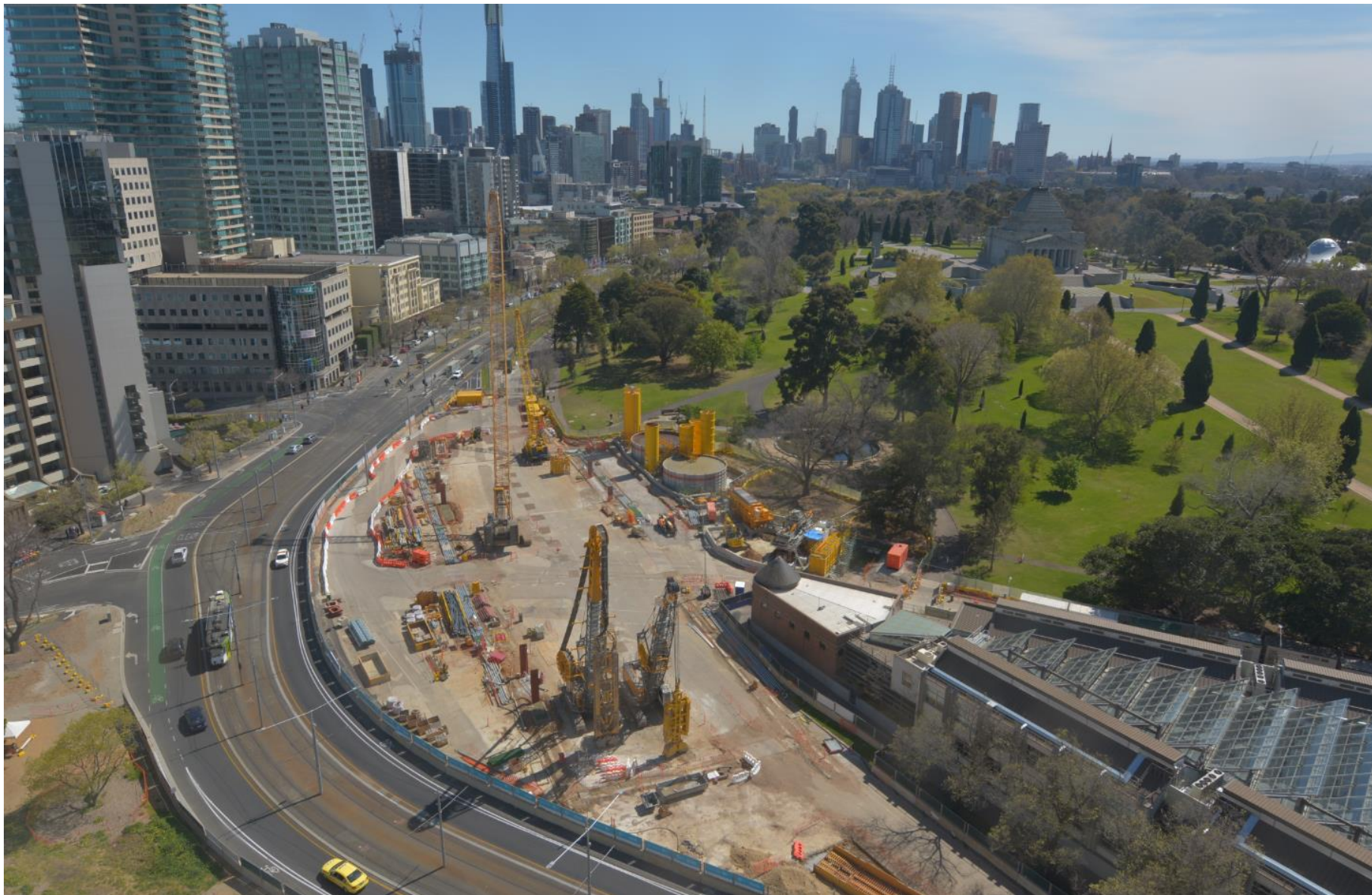
(D-wall cutter in operation)

NORTHERN BOX



(D-wall cage being lowered into place)

NORTHERN BOX



(Northern Box: October)

NORTHERN BOX



(Northern Box: October)

CURRENT AND UPCOMING WORKS

SOUTHERN BOX

- In-ground obstruction removal
- Guide wall construction
- Retaining wall construction (ongoing)
- Ground Anchor removal (ongoing)
- Bowen Lane to Albert Road realignment works

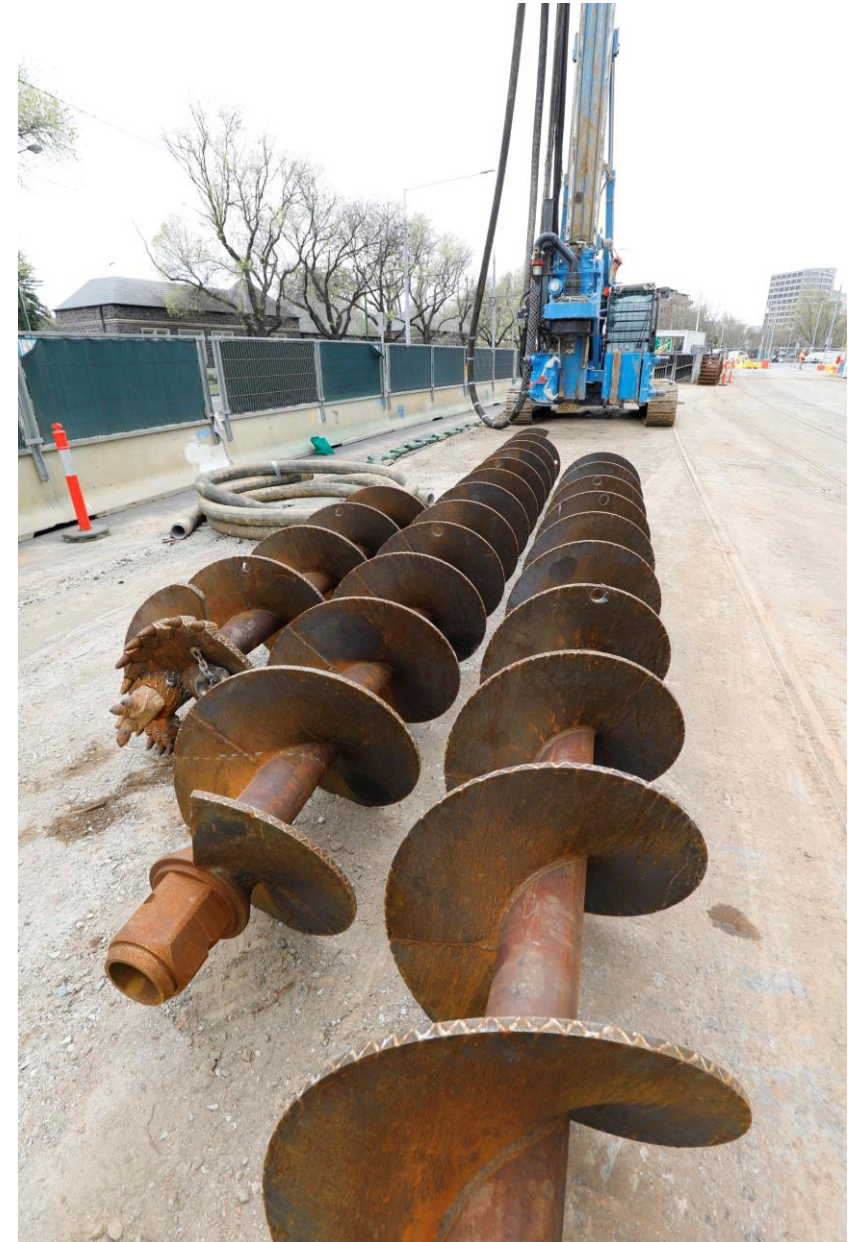


(Retaining Wall: Southern Box)

SOUTHERN BOX



(Southern Box: October)



(Piling Rig – Ground Anchor Cutting)

SOUTHERN BOX



(Southern Box: October)

UPCOMING TRAFFIC CHANGES

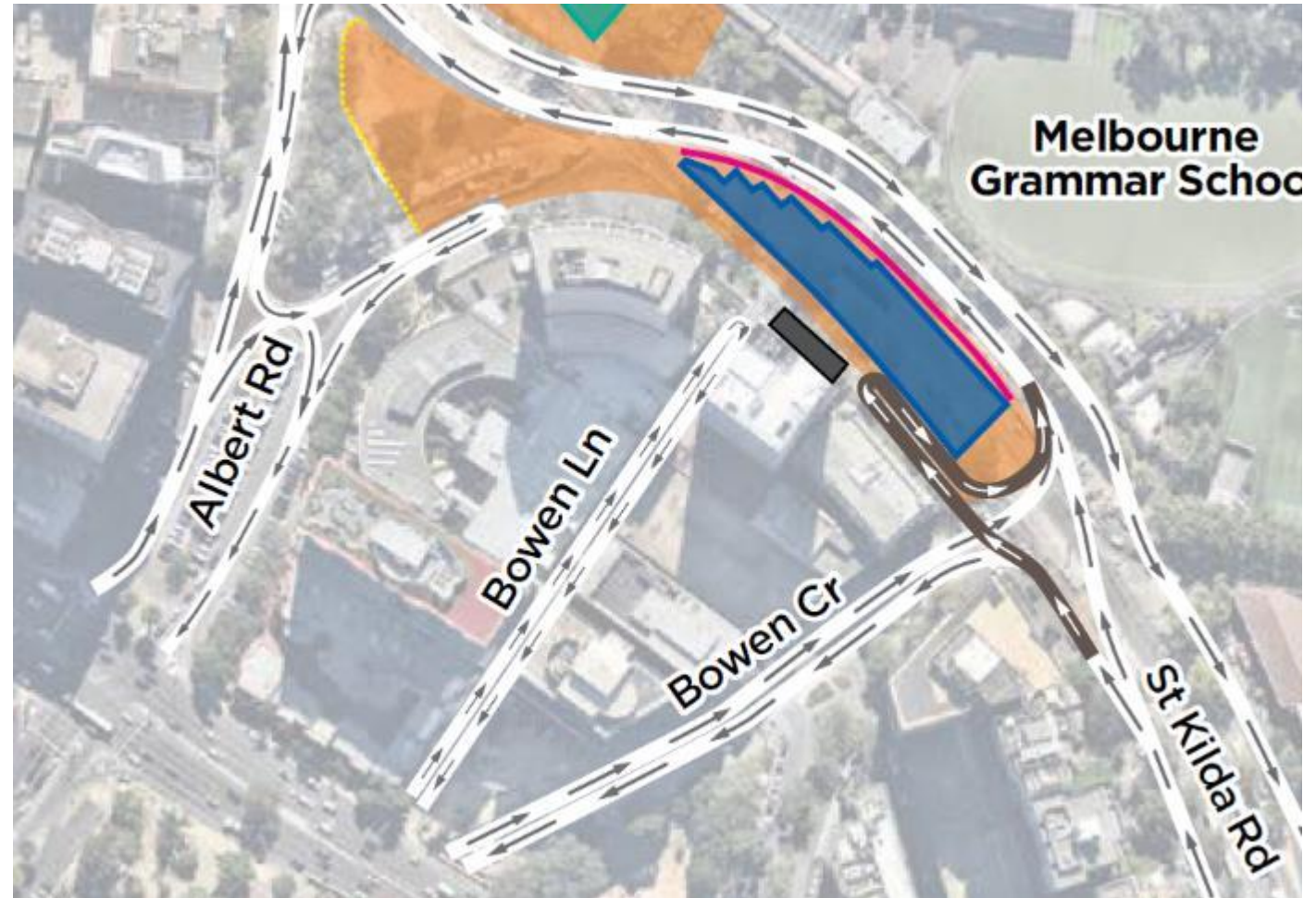
Bowen Lane connection around to Albert Road South

1.	Bowen Lane closed at St Kilda Road end	3 – 11 October
2.	“Hammerhead” U-turn opened	12 October
3.	Reopening of Bowen Lane to Albert Road	Early November

UPCOMING TRAFFIC CHANGES

3-11 October

Bowen Lane will be closed at St Kilda Road end to allow for obstruction removal works at the end of Bowen Lane



UPCOMING TRAFFIC CHANGES

12 October to early November

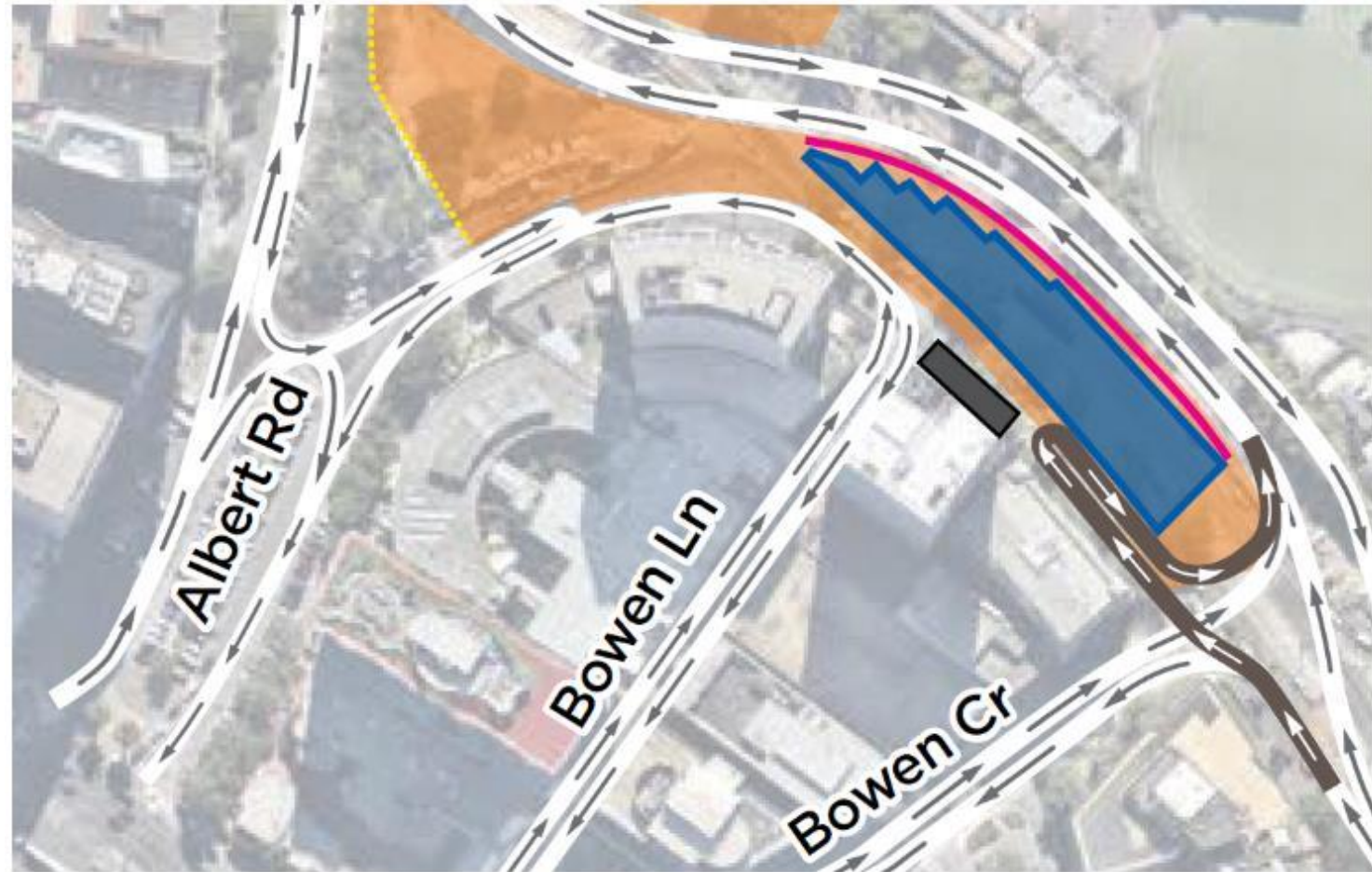
To allow for easier U-turns during realignment works between Bowen Lane and Albert Road, a 'Hammerhead' U-turn will be in place during this time.



UPCOMING TRAFFIC CHANGES

Early November

The realigned road connecting Bowen Lane to Albert Road re-opens to allow works to continue along station box alignment.



EMERGENCY SERVICES CONSULTATION

- MFB recently visited site to view the existing alignment and planned realignment
- Reviewed upcoming traffic changes and future emergency service access
- Regular reviews will continue as the project progresses.



(Emergency Services Site Visit)



CROSS YARRA PARTNERSHIP COMMUNITY AND BUSINESS SUPPORT MEASURES

SMALL BUSINESS MENTORING

- Mentoring sessions available to local businesses at Thrive Network – upstairs at 52 Albert Road
- Email offer to local businesses
- Register at: sbms.org.au/events#host-1
- Dates:
 - 16 October
 - 23 October
 - 30 October
 - 13 November



(Thrive – 52 Albert Road)

DOMAIN ROAD POP-UP PARK CONSULTATION

- Community consultation period from 1 September to 14 September 2018
- Pop up sessions on Domain Road
- Online Survey
- Advertised in the September construction notification mailout
- 20 responses received from the community
- We will now work with City of Melbourne on next steps.



(Artists Impression)



CROSS YARRA PARTNERSHIP ENVIRONMENT UPDATE

AIR QUALITY MONITORING

This table shows the air quality objectives set for the project.

Standard	Pollutant	Averaging Period	Objective
SEPP AAQ	Particles as PM10	24-Hr	60 ug/m ³
	Particles as PM2.5	24-Hr	36 ug/m ³

The next four graphs show the air quality testing results at the two monitoring sites.

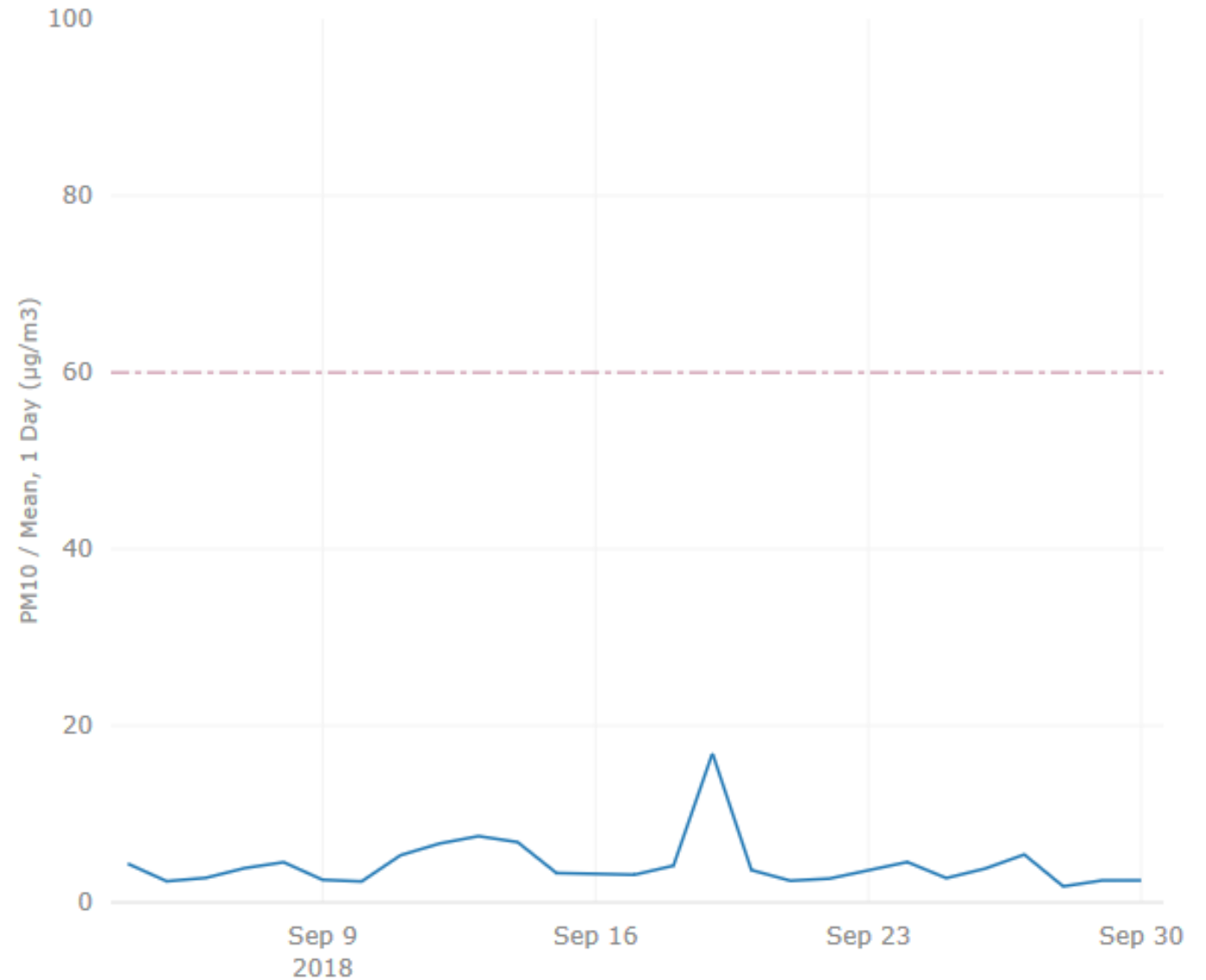
AIR QUALITY (PM10)

Site 1: Albert Road Reserve



(Air quality monitor in Albert Reserve)

DEVICE DATA



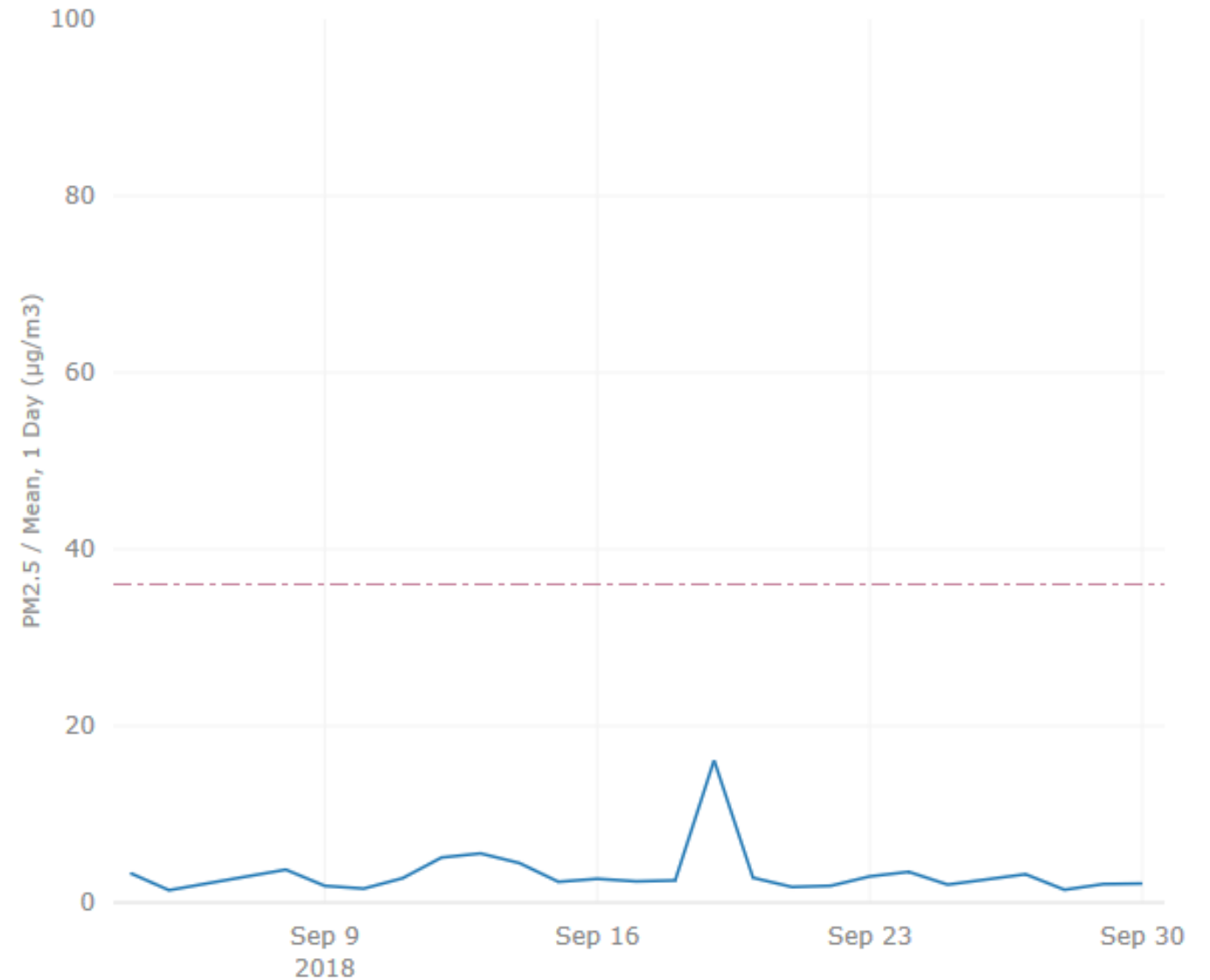
AIR QUALITY RESULTS (PM2.5)

Site 1: Albert Road Reserve



(Air quality monitor in Albert Reserve)

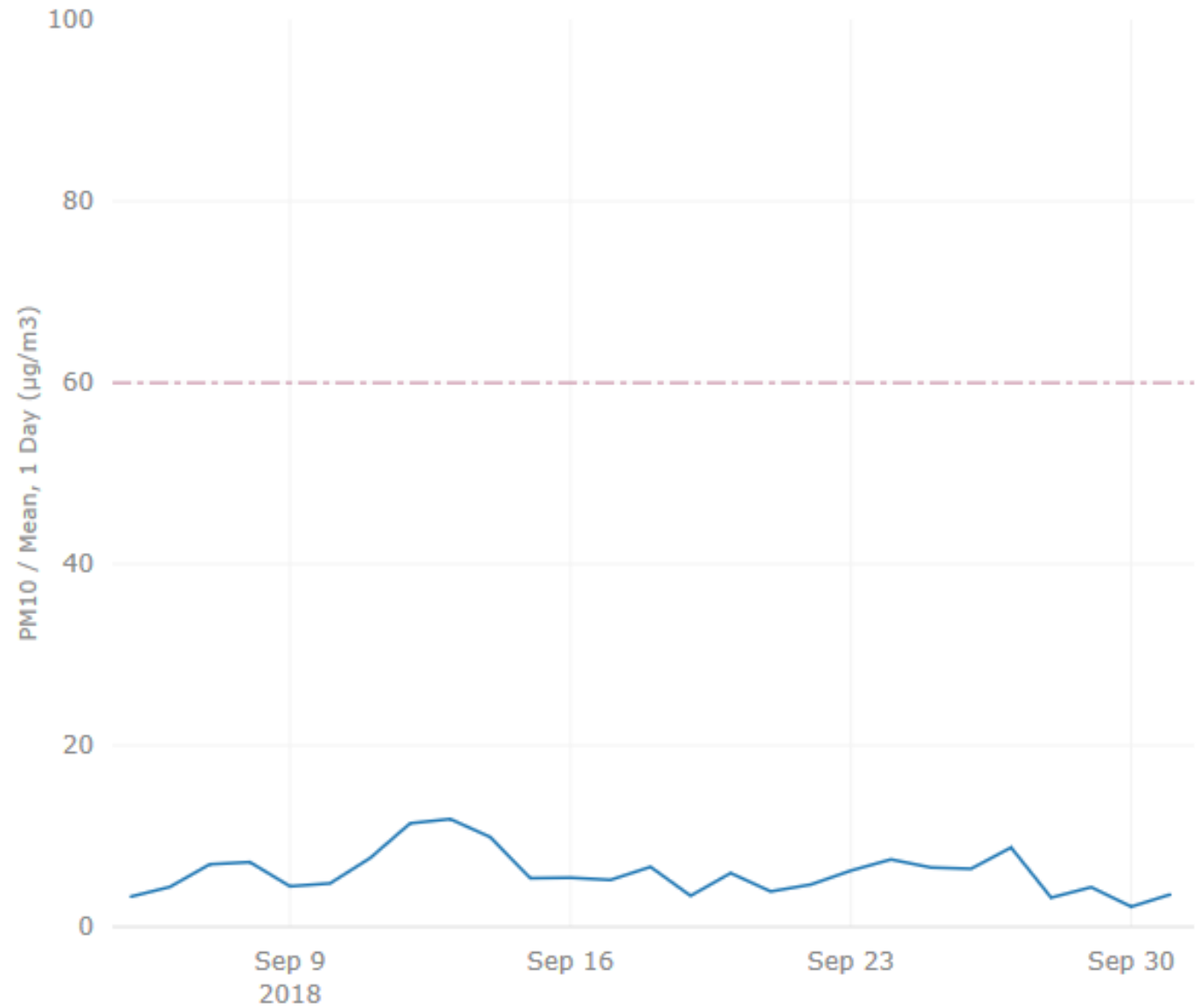
DEVICE DATA



AIR QUALITY (PM10)

Site 2:
Melbourne Grammar

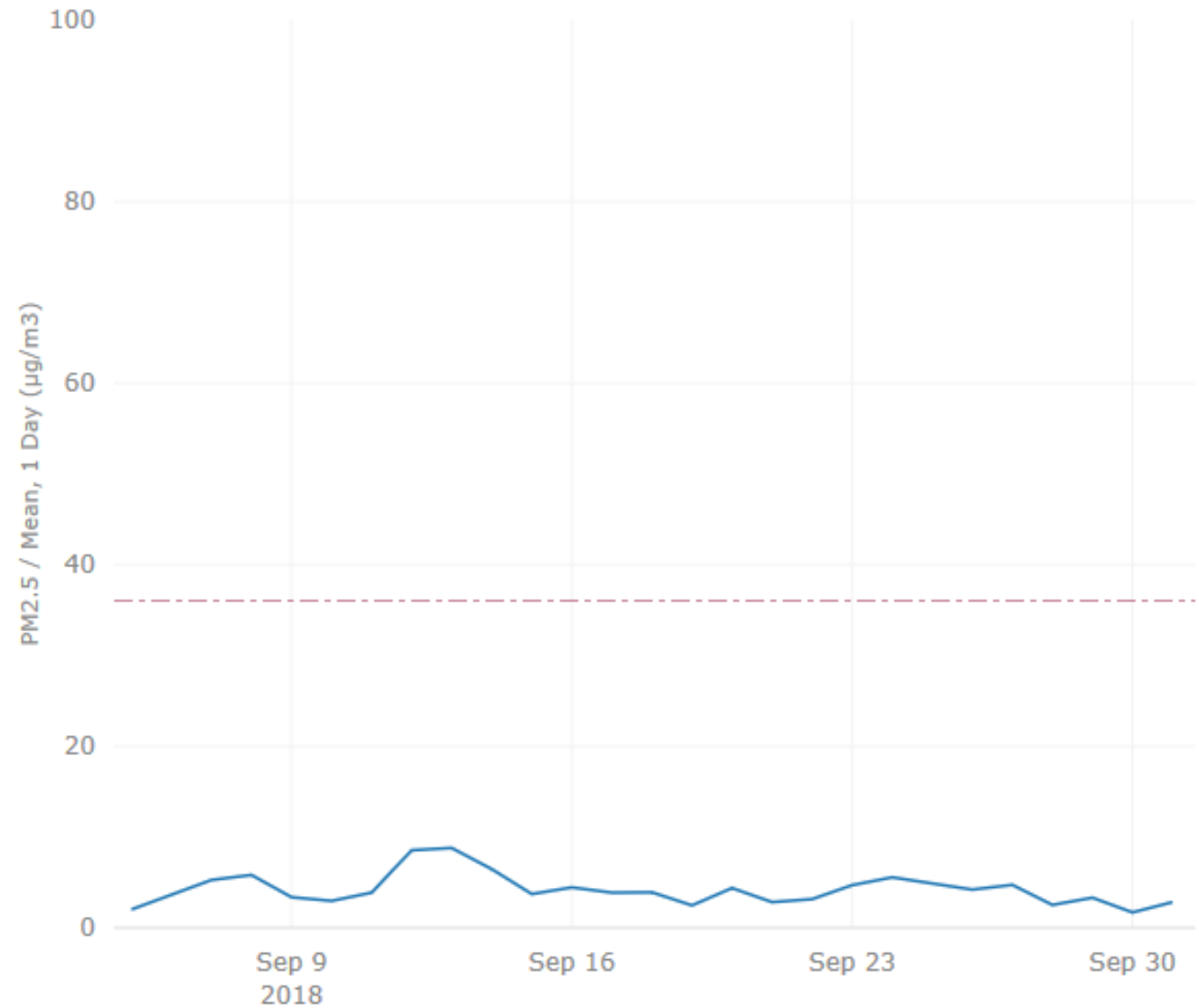
DEVICE DATA



AIR QUALITY (PM2.5)

Site 2:
Melbourne Grammar

DEVICE DATA



TREE REPLACEMENT

CYP are developing a landscaping plan in consultation with City of Melbourne and City of Port Phillip. The plan will take into account community feedback received through the Development Plan consultation and will be developed in accordance with Heritage Victoria permits

Indicative tree sizes by area:

- Boulevards / Major City Streets – Exotic
200L (3-4m tall)
- Major reserves – Native
45L - 200L (1-4m tall)
Preference for larger stock for selected feature trees
- Secondary Streets – Exotic / Native
45L (1-2m tall)



Draft Domain Parklands Master Plan

Date: 3 October 2018

Presenter: Cathy Kiss, Senior Open
Space Planner



CITY OF MELBOURNE



INCREASINGLY UNSTABLE CLIMATE
CONDITIONS

A FRAGILE LANDSCAPE AND
MANAGEMENT SYSTEMS

A PROJECTED INCREASE IN
VISITATION FOR EVENTS AND DAY
TO DAY

WHY WE NEED A
DOMAIN PARKLANDS MASTERPLAN

PREEMPTING THE IMPACT OF
PROPOSED CITY SHAPING PROJECTS

A COMPLEX GOVERNANCE
STRUCTURE LEADING TO A
DISCONNECTED PARKLAND AND
MANAGEMENT APPROACH

PREEMPTING THE IMPACT OF
INDIVIDUAL PARKLAND PROJECTS

DEFINE ITS CONTEMPORARY ROLE
IN THE CITY AND OPEN SPACE
NETWORK

5 Values expanded into 5 Themes



1. Nurture a diverse landscape and parkland ecology



2. Acknowledge history and cultural heritage



3. Support exceptional visitor experience



4. Improve pedestrian movement and access



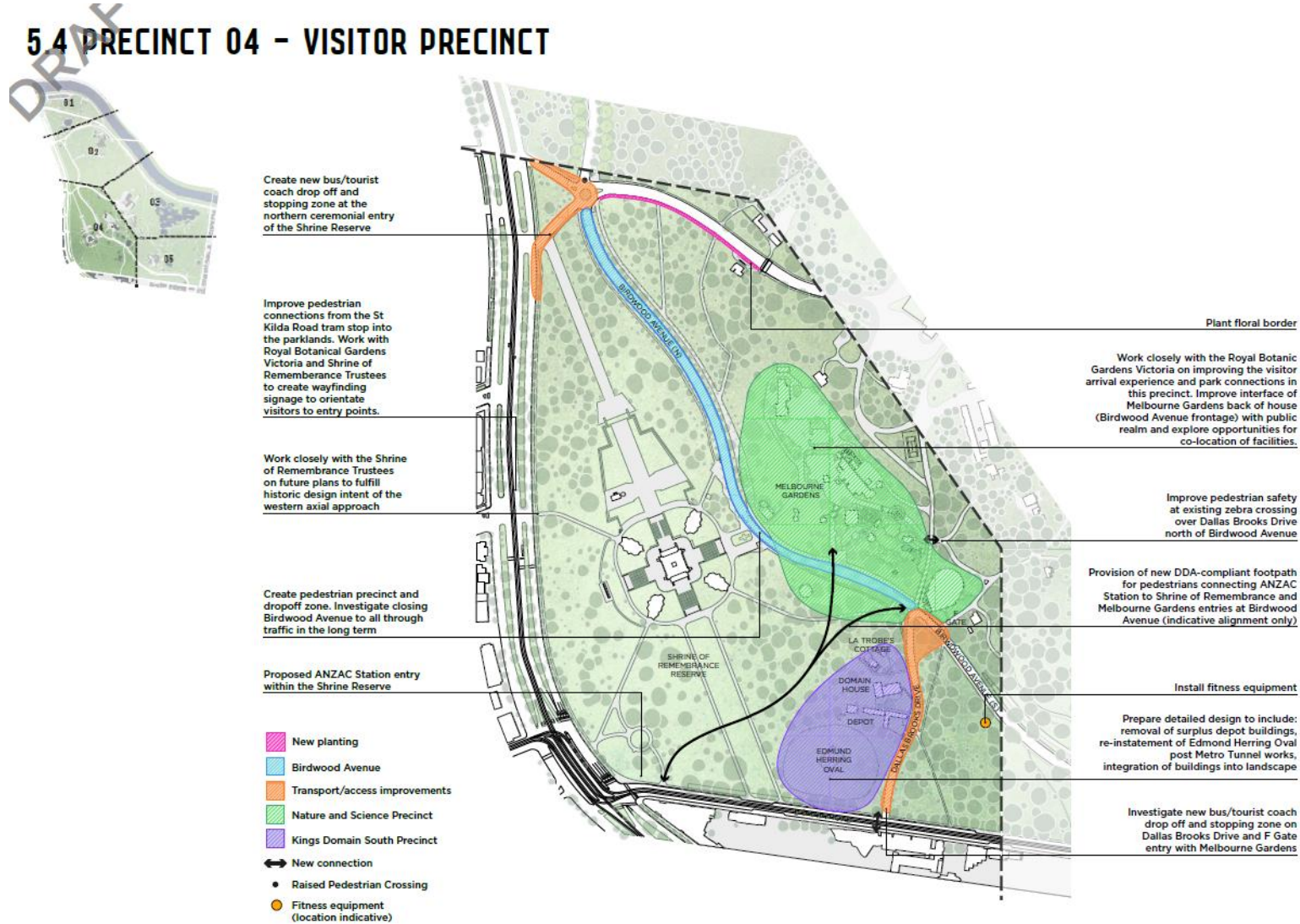
5. Management and partnerships to build resilience

Domain Parklands



Kings Domain South

5.4 PRECINCT 04 - VISITOR PRECINCT





Domain Parklands master plan project timeline



Questions?



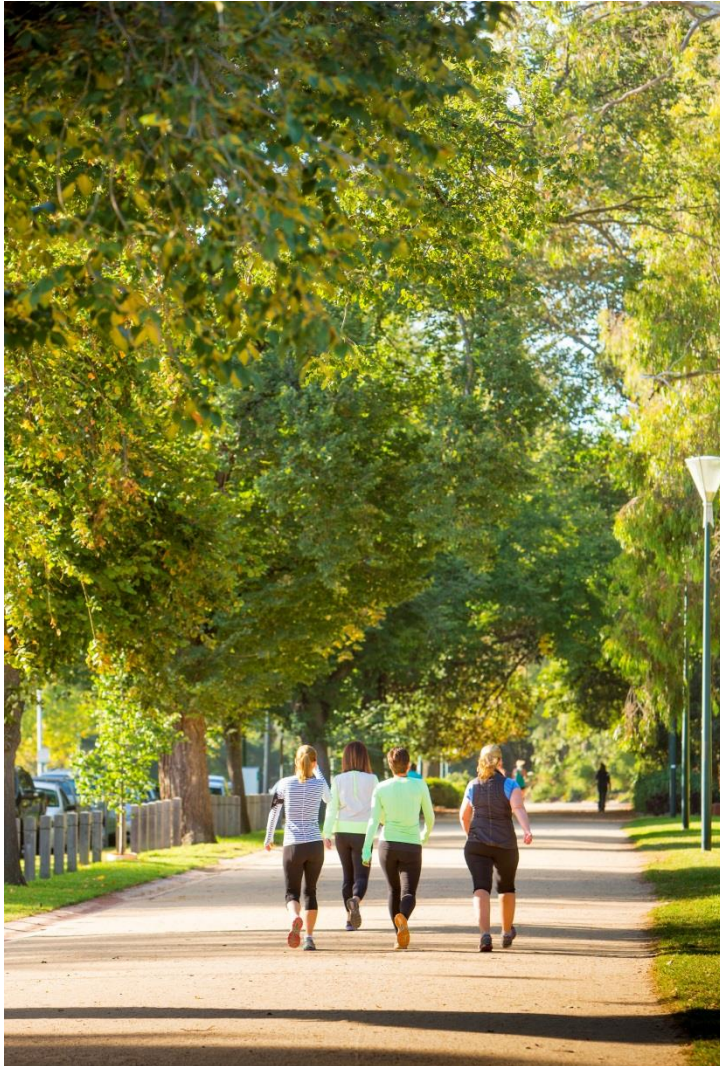
CITY OF MELBOURNE



CITY OF MELBOURNE

MELBOURNE.VIC.GOV.AU

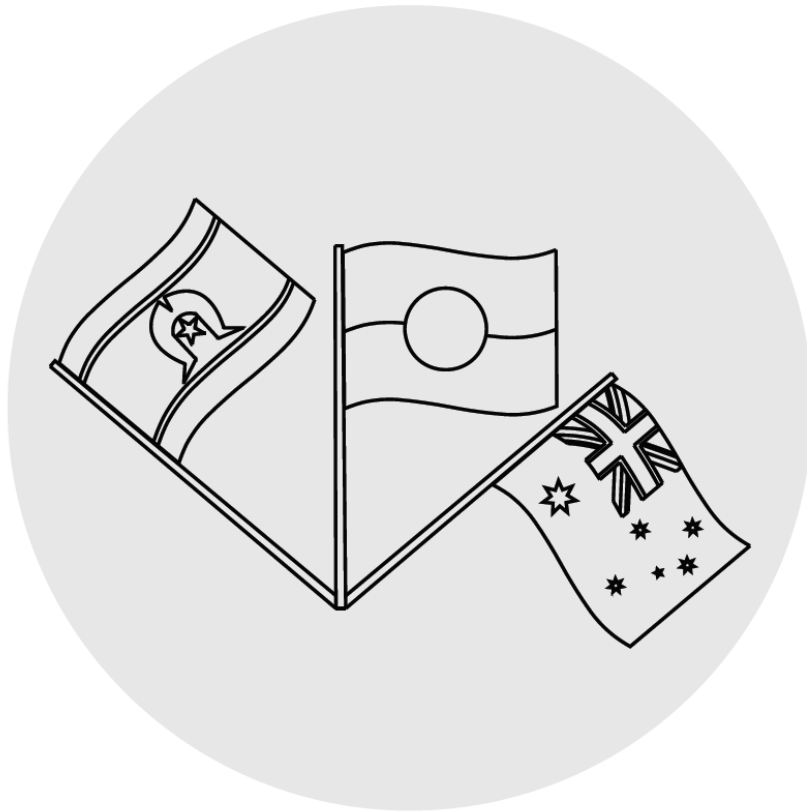
© City of Melbourne



- **The Master Plan sets five key values to guide future management of the Domain Parklands over the next 20 years:**
- A healthy and resilient parkland
- A parkland of history and cultural heritage
- A parkland for people
- A parkland that connects
- A parkland of partnerships



- **Nurture a diverse landscape and parkland ecology**
- Key action areas:
 - Elevate horticultural complexity and management.
 - Support a healthy ecosystem.
 - Manage a city arboretum.
 - Manage soil and water.



- **Acknowledge history and cultural heritage**
- Key action areas:
 - Respect and reveal the Aboriginal cultural heritage.
 - Reflect cultural values and historical significance.
 - Manage memorials in the Domain Parklands (areas managed by the City of Melbourne).



- **Support exceptional visitor experience**
- Key action areas:
 - Provide facilities (amenities) to meet future needs.
 - Enhance visitor experience.
 - Manage organised activity spaces.
 - Manage events.



- **Improve pedestrian movement and access**

Key action areas:

- Improve parkland entrances.
- Improve internal pathway networks.
- Reduce barriers and improve access over roads.
- Support access by public transport.
- Network approaches to improve cycling routes.
- Contemporary wayfinding in the Domain Parklands.
- Create journeys in the Domain Parklands.
- Rethink the use of existing road space
- Car parking – support visitor access while adapting to future trends.



- **Management and partnerships to build resilience**
- **Key action areas:**
 - Make one parklands of many unique destinations.
 - Create a framework for priorities and decision-making.
 - Commitment to future management and collaboration.
 - Manage uses in the areas managed by the City of Melbourne.
 - Reduce the impact of services.



QUESTIONS?