



TOWN HALL STATION COMMUNITY REFERENCE GROUP

CROSS YARRA PARTNERSHIP
FRIDAY 29 JANUARY 2021



Construction partner:





TOWN HALL STATION COMMUNITY REFERENCE GROUP

Jodie Barrington, CBD Precinct Communications and Stakeholder Engagement Lead, CYP D&C

Blythe Chidgey, Town Hall Station Stakeholder Engagement Manager, CYP D&C

Kate Kearns, Business Support and Engagement Lead, CYP D&C

Ryan Martin, Senior Tunnels Engineer - West Precinct, CYP D&C



Construction partner:



AGENDA

1. City Square acoustic shed art installation
2. Project overview
3. Town Hall Station update
4. Business support update
5. TBM Tunnelling update

CITY SQUARE ACOUSTIC SHED ART INSTALLATION

PRACTICE INTRODUCTION.

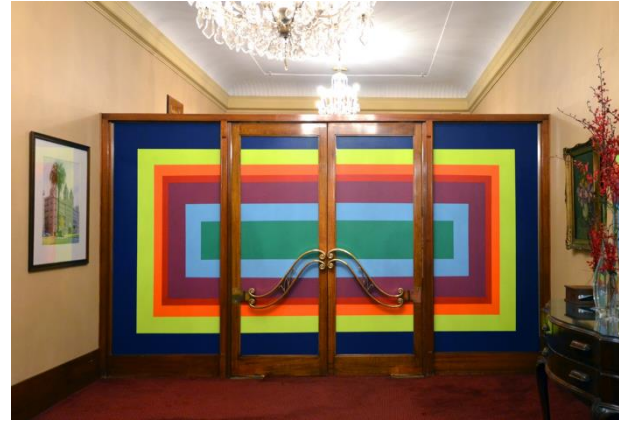
INSTALLATION ARTWORK.



ADHOC, GERMANY.



LINDEN NEW ART, ST KILDA.



HOTEL WINDSOR, MELBOURNE.



CHASM, NEW YORK.



RICHMOND TOWN HALL.



BSA, BYRON BAY.



WILLIAM JOLLY BRIDGE, BRISBANE.



MUSEUM OF BRISBANE, BRISBANE.

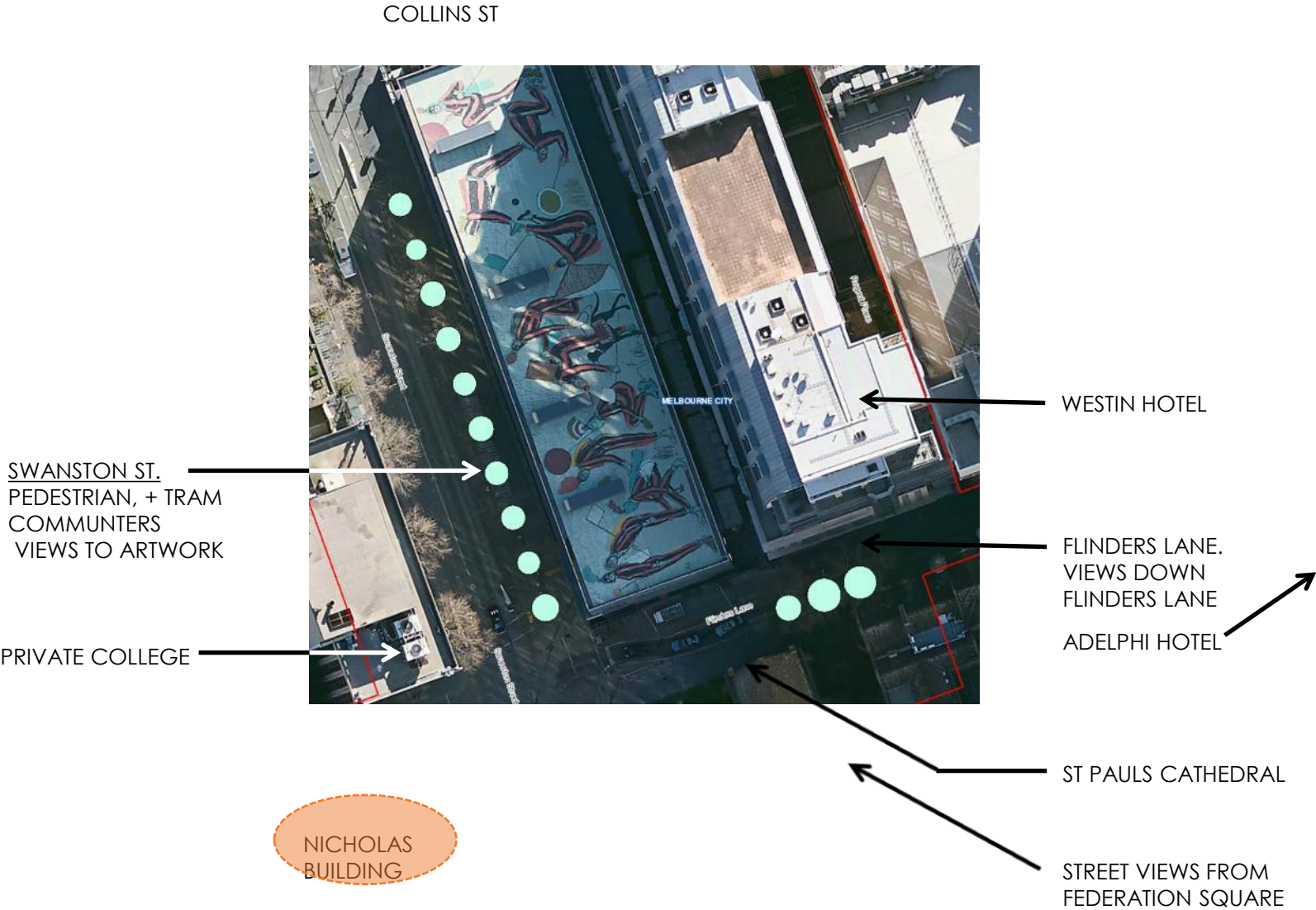


ANNA PAPPAS GALLERY, MELBOURNE.

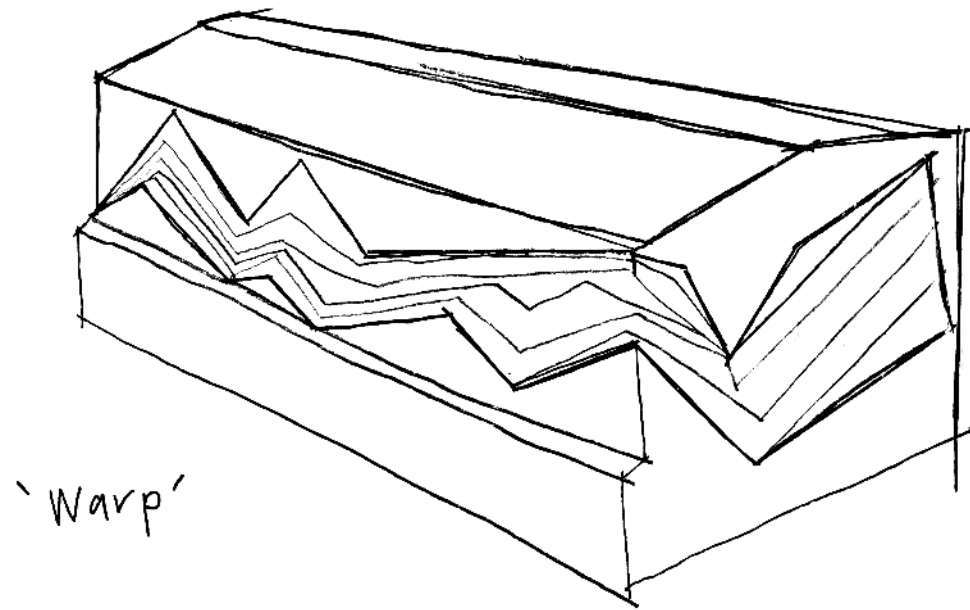


VCA, MELBOURNE.

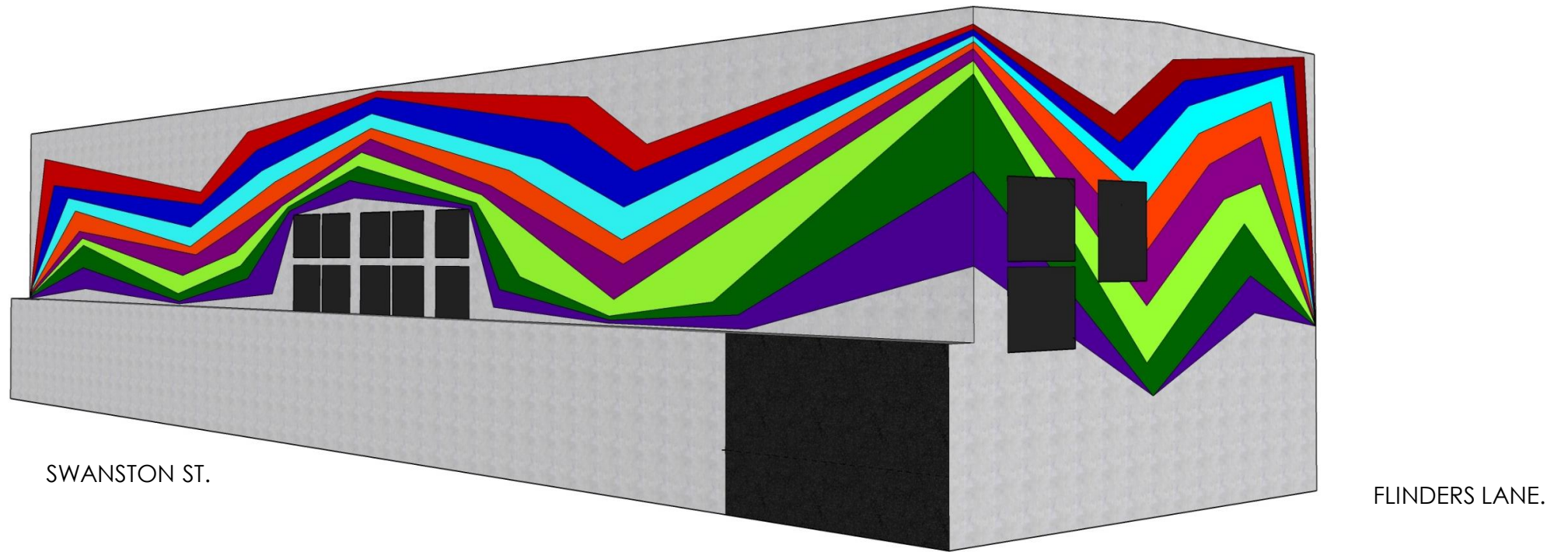
OPPORTUNITY.
METRO TUNNEL ACOUSTIC SHED. CONTEXT – TIME + PLACE.



SITE ANAYLSIS.

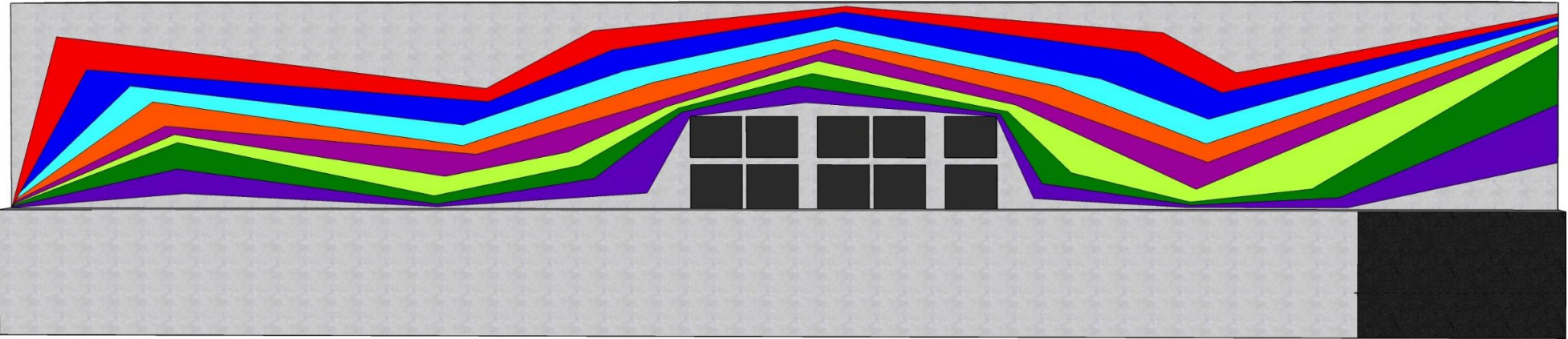


INITIAL SKETCH.

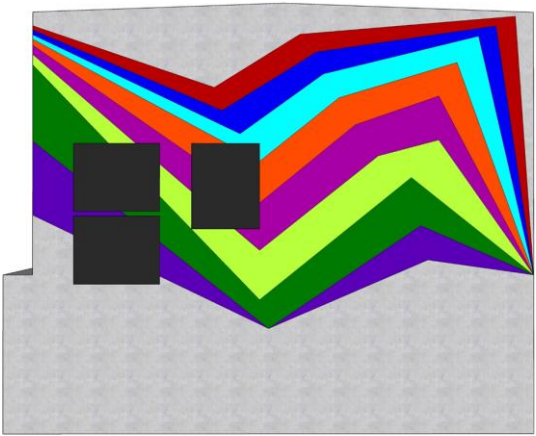


ARTIST CONCEPT MODEL 3D view corner Flinders Lane + Swanston st

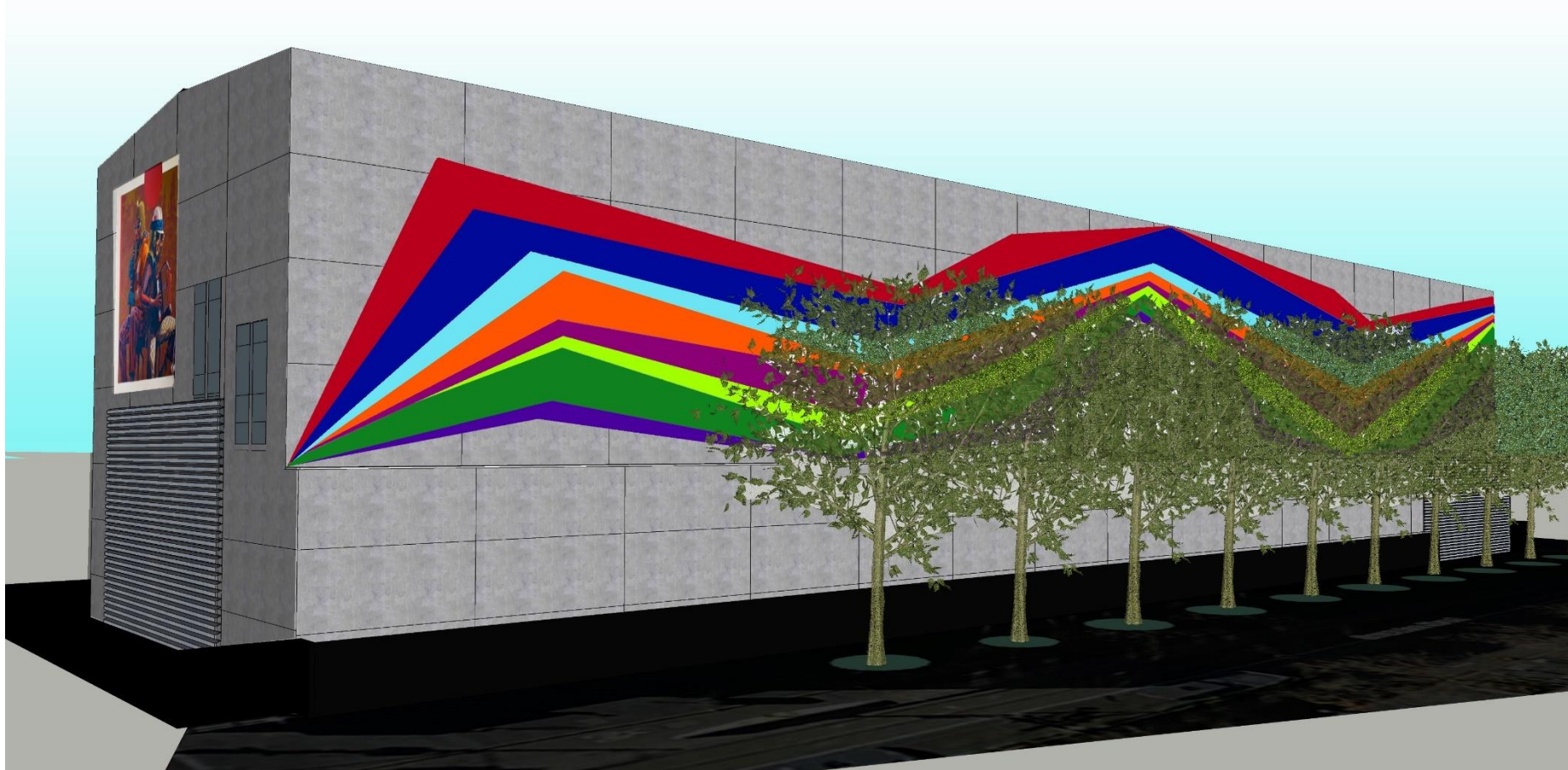
SPATIAL DECONSTRUCTION #23 (resilience).



SWANSTON ST.



FLINDERS LANE.



ARTIST CONCEPT MODEL 3D view corner Swanston + Collins St

SPATIAL DECONSTRUCTION #23 (resilience).

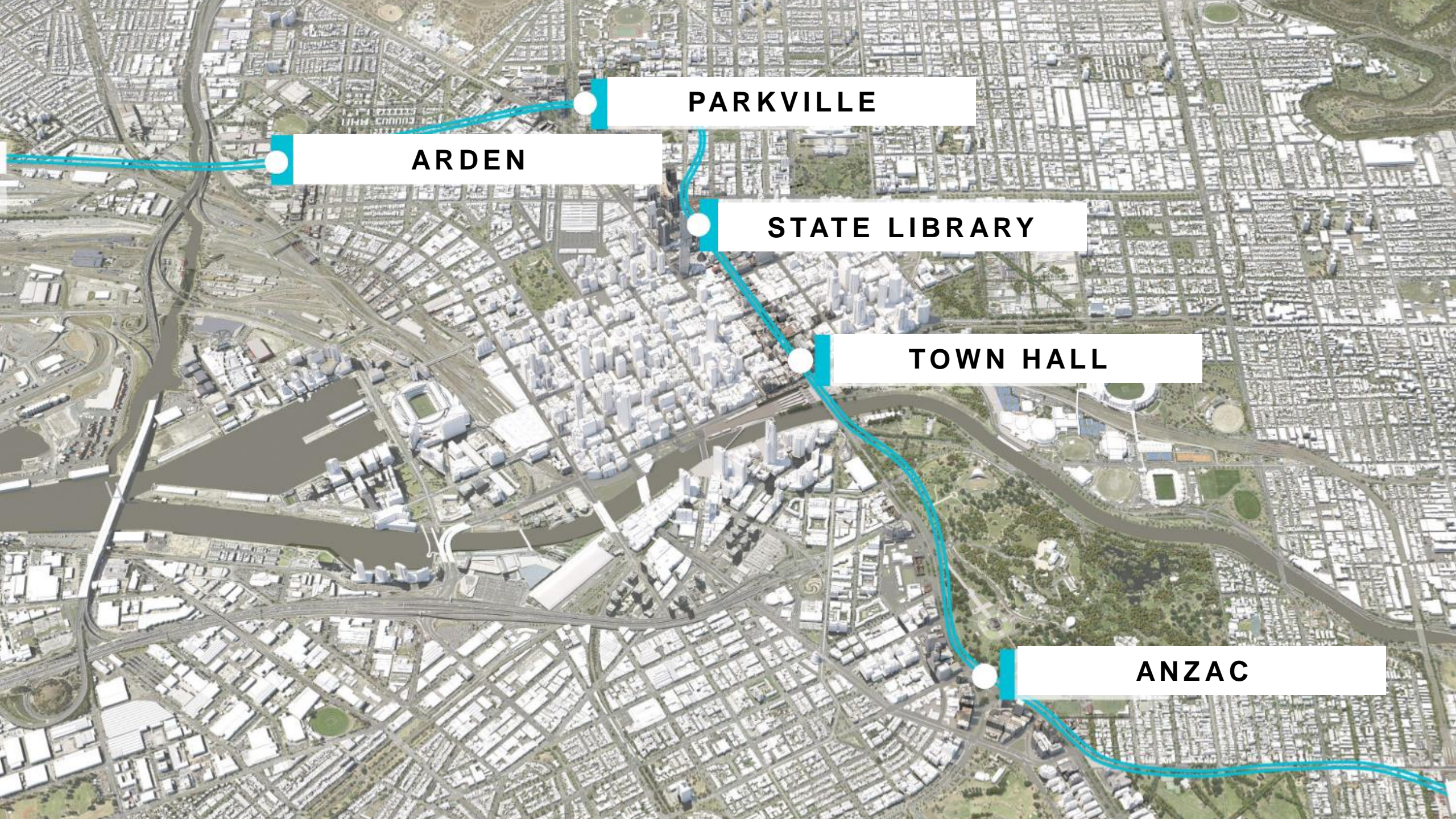


PROJECT OVERVIEW



Presenter: Jodie Barrington





ARDEN

PARKVILLE

STATE LIBRARY

TOWN HALL

ANZAC

ARDEN

Arden Station site

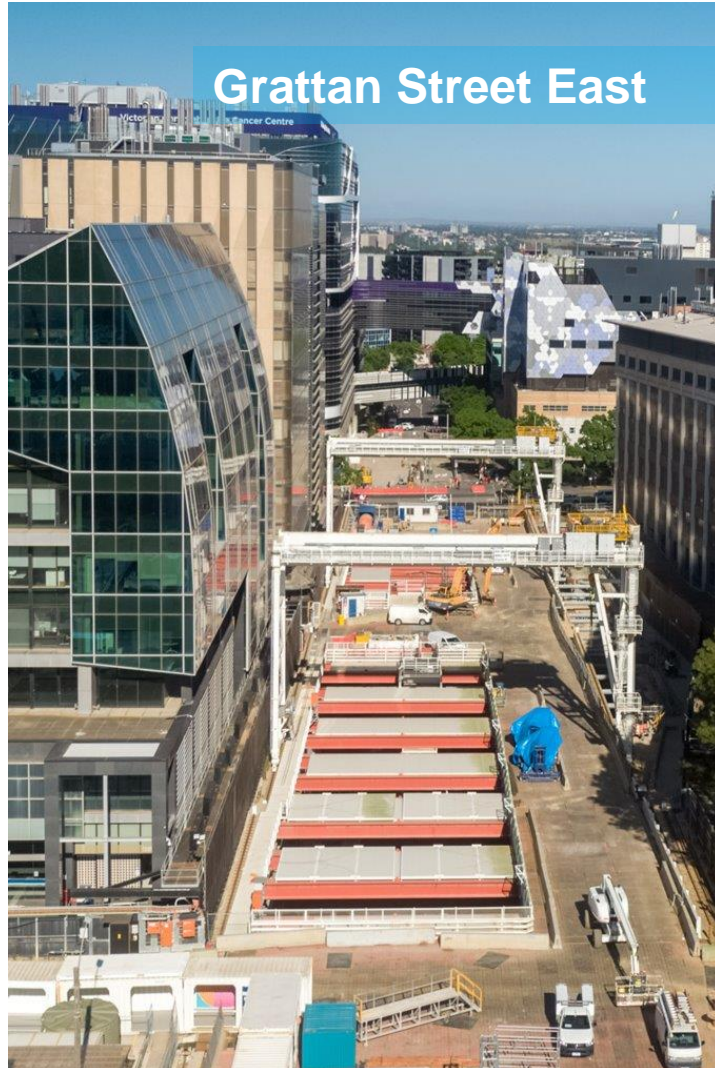
- Station box construction ongoing, including installation of precast platform panels
- Construction of western station building (above ground)
- Ongoing TBM/tunnelling support and cross passage construction
- Realignment of Laurens Street in February 2021 to enable service relocations and construction of the Arden Station entrance

Western Portal

- Ongoing construction of egress building



PARKVILLE



- Permanent structure works are ongoing at Grattan Street east in the main station box. Secondary box excavation is progressively transitioning into structure works
- Tunnel ventilation shaft and goods lift works have commenced from site establishment at the Grattan Street east site
- Preparatory works at Grattan Street west are ongoing to facilitate station entrance construction adjacent to The Royal Melbourne Hospital in February 2021

STATE LIBRARY



- In late-December 2020 TBM Joan broke through into the State Library Station Precinct
- Top-down construction works are continuing at the La Trobe and Little La Trobe Street sites
- Structure and lining works are continuing below ground, as the team continue to install the permanent architectural elements of the future State Library Station.

ANZAC

- TBM Millie and Alice are both on their way to Town Hall Station. Millie has completed over 600 metres of tunnel, and Alice has completed 50
- Works to construct the Shrine of Remembrance station entrance is underway
- Excavation continues for the tram interchange station entrance, with the team now excavating beneath the suspended roof slab
- In the south box, 6 of 10 concrete pours to construct the concourse level slab are now complete.



TOWN HALL STATION UPDATE



Presenter: Blythe Chidgey



Activity	Jan	Feb	Mar	Apr	May	Jun
Roadheader tunnelling						

Preparation for platform rail tunnel excavation

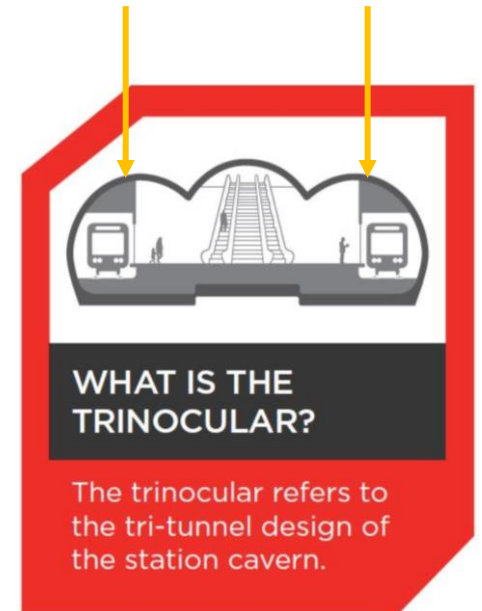
Platform rail tunnel excavation

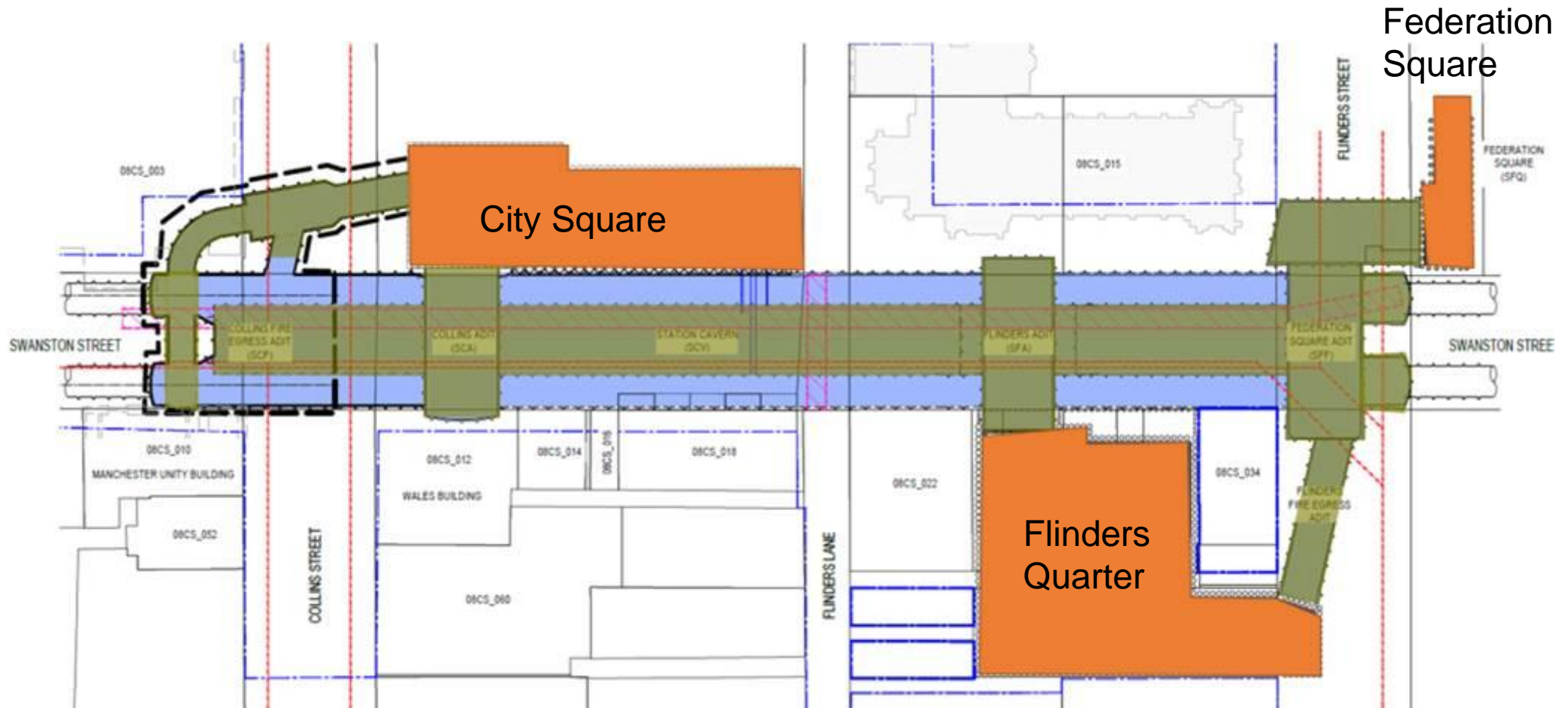
Roadheader tunnelling

- 24 hours, Monday to Sunday



Platform rail tunnels







The structures and lining team are continuing the construction of the underground station platform

Ground beam installation works

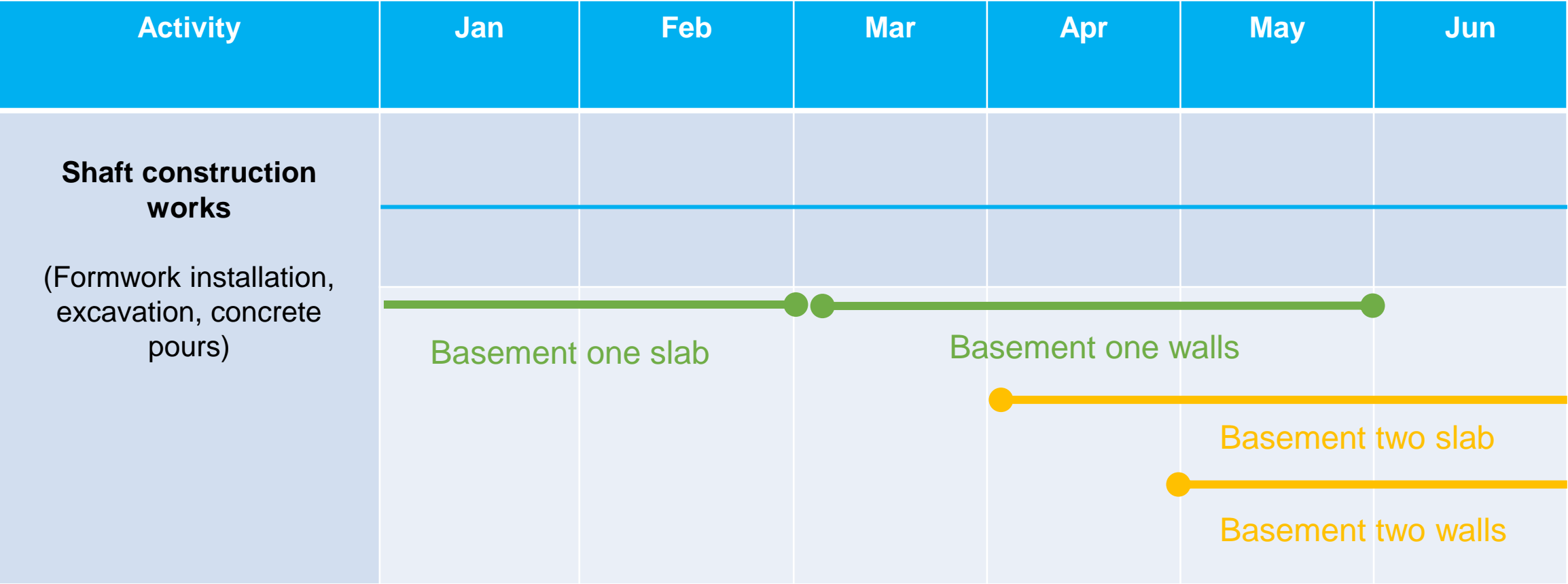


FLINDERS QUARTER

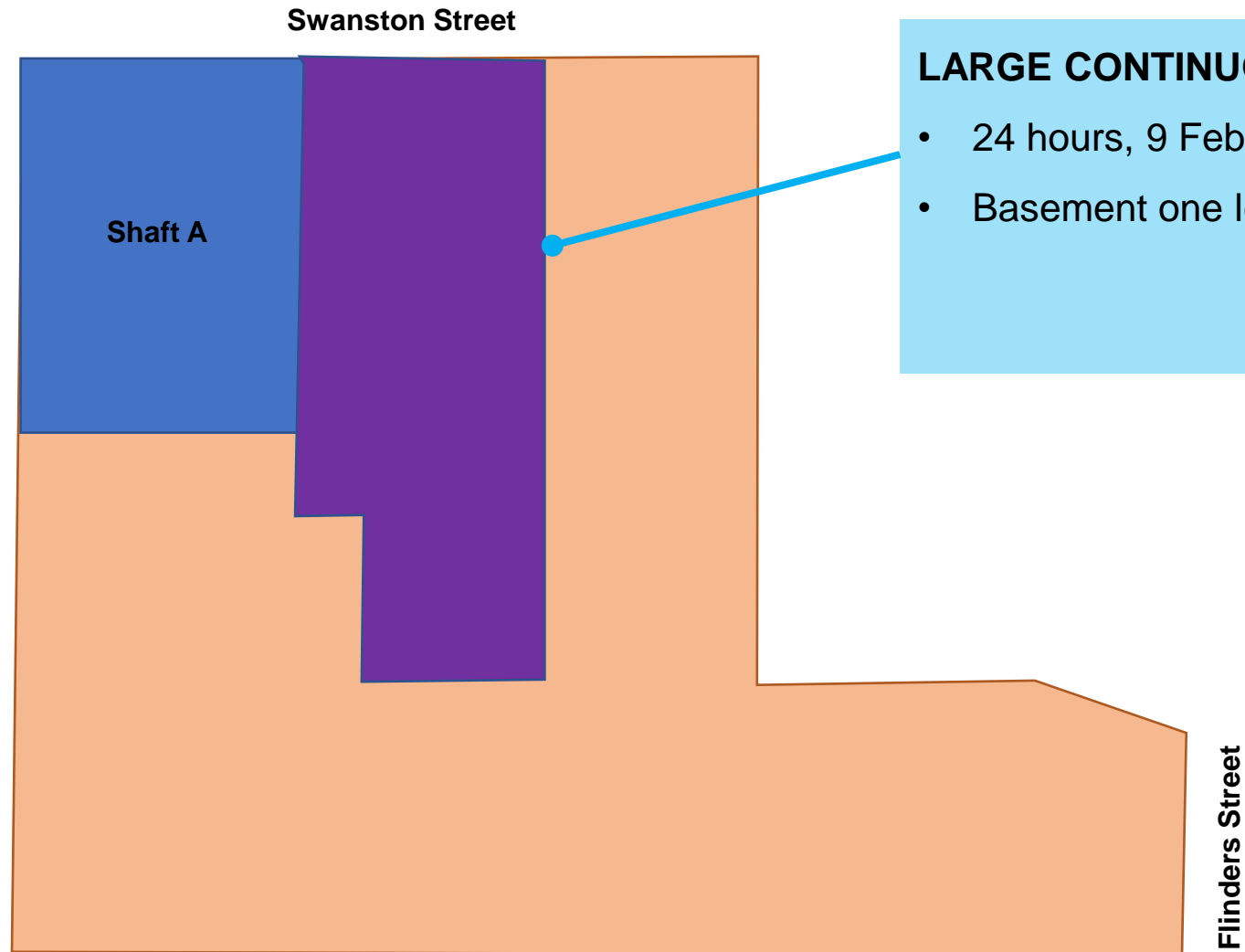
Basement one construction works – January 2021



FLINDERS QUARTER



FLINDERS QUARTER CONCRETE POUR



LARGE CONTINUOUS CONCRETE POUR

- 24 hours, 9 February 2021
- Basement one level, 500 cubic metres

FLINDERS QUARTER – OUT OF HOURS WORKS

Deliveries (ongoing)

- Monday to Saturday, 5am to 7am
- Monday to Friday, 6pm to 10pm

Shaft construction

- Monday to Friday, 7am to 10pm
- Sundays, 8am to 4pm

Permanent concrete structure works

- Monday to Friday, 7am to 12am (concrete pours, as required)
- Monday to Fridays, 6pm to 7am (concrete finishing works, as required)
- 24 hours, 9 February 2021

Excavation

- Monday to Friday, 7am to 8pm
- Saturdays, 7am to 5pm
- Low noise works will continue between 8pm and 10pm (Monday to Saturdays)

Excavated material removal

- Monday to Sunday, 6:30am to 10pm



FLINDERS LINK





FEDERATION SQUARE

FEDERATION SQUARE WORKS UPDATE

Federation Square excavation and tunnelling support

- 24 hours, Monday to Sunday

Activity	Jan	Feb	Mar	Apr	May	Jun
Shaft excavation (Shaft A)						
Support tunnelling works						



CITY SQUARE

CITY SQUARE WORKS UPDATE

Activity	Jan	Feb	Mar	Apr	May	Jun
Shaft excavation						
Tension pile installation						
Permanent concrete structure works						

Bottom up construction sequence in the shaft including the construction of the base slab, walls and suspended slabs

South and central

Northern end of shaft

CITY SQUARE– OUT OF HOURS WORKS

Excavation and tension pile installation

- Monday to Sunday, 24-hours

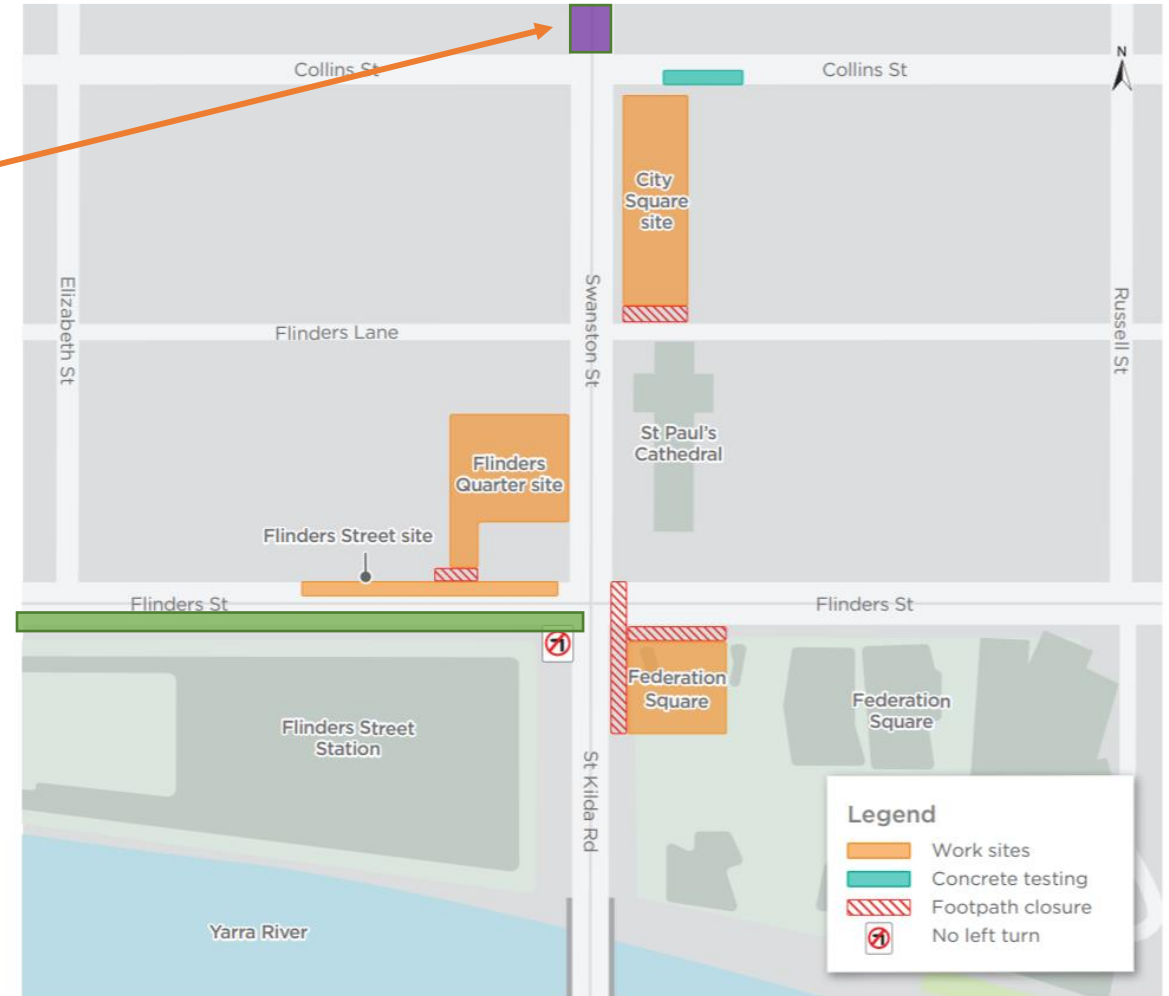


Groundwater well decommissioning – Swanston Street (between La Trobe and Collins streets)

- 10pm to 5am, two nights between Tuesday 9 and Thursday 11 February 2021

Service investigations - Flinders Street

- 1am to 5am, between Wednesday 27 January and Saturday 6 February 2021



Indicative only

QUESTIONS

BUSINESS SUPPORT UPDATE

Presenter: Kate Kearns

2020



- 2020 tough year for most Melburnians, particularly difficult for businesses in the CBD
- Many businesses forced to close their doors during lockdown, CYP-DC continued to support those businesses that remained open (in and around our construction sites.

FQ WEBSITE

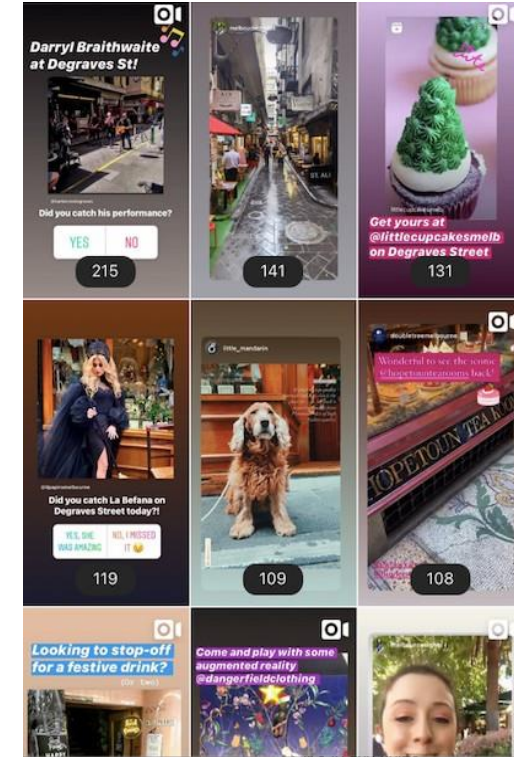
- 2020 highlighted the importance of having a strong online presence
- CYP-DC & RPV launched the Flinders Quarter website in November 2020

www.flindersquarter.com

- Site showcases the diverse and unique businesses of the area along with upcoming events and activations
- Also, strengthens the brand/FQ 'look and feel' that we've developed over the past two years

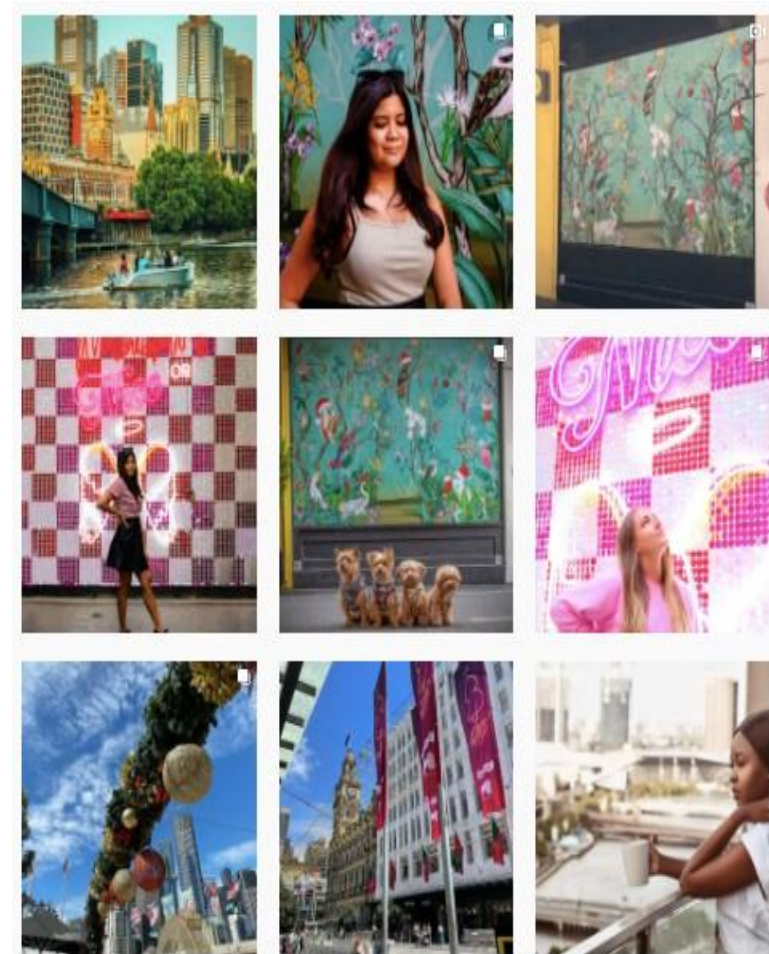
FQ CHRISTMAS CAMPAIGN

- Digital Campaign – 14-26 Dec
- Organic social posts
- Paid social campaign
- Influencer collaboration
- Area photo shoot and promotional video
- 178K people reached across both Facebook and Instagram (paid and organic)



USER GENERATED CONTENT

- Good level of user-generated content throughout the campaign, particularly around the augmented reality art walls and the Electric Confetti installation in Scott Alley.
- FQ businesses also posted during this time and tagged Flinders Quarter, enabling us to share the content via FQ stories.



PAID SOCIAL CAMPAIGN



- **Facebook & Instagram:**
- 2 x weeks of promoted posts
- Centred around a “Shop Local this Xmas” message
- Most engaged audience:
- Women 25-39
- Live within 20km of Melb CBD
- Interest in boutiques, markets and shopping malls

INFLUENCER COLLABORATION

@melbournesights



2 x Feed Posts
26 x Stories

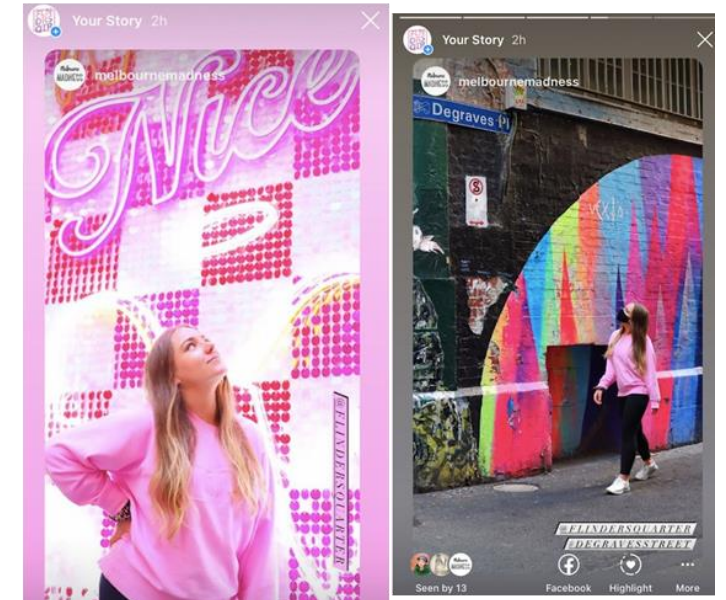
• @tothotornot



1 x Feed Post
1 x Story

(Note – Augmented Reality Walls were not set up when they visited)

@melbournemadness



2 x Feed Posts
7 x Stories

DEGRAVES STREET SOUTH

- Greening – 15 x trees and planter boxes
- Augmented Christmas Decals

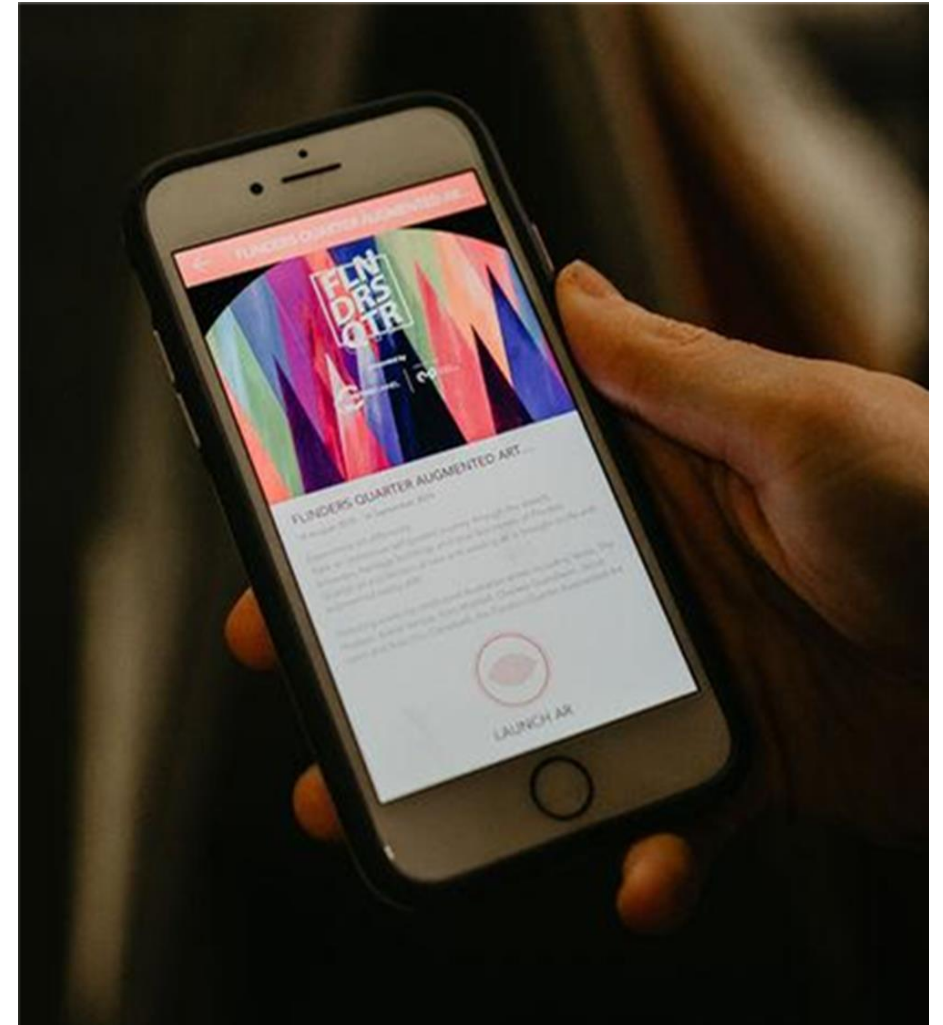


FQ AUGMENTED ART WALK

- May 2021, 6 x weeks
- Build on the success of FQAAW2019
- 12 x artworks, local artists
- Attract new and repeat local visitation to the area with a unique, creative experience
- Incentivise visitors to engage and support businesses through gamification of the user journey



- New gamification element
- Visitors will be lead through FQ, activating key artwork at selected locations and unlocking offers and incentives from businesses (or 'treasures') along the journey.
- EyeJack app will feature:
 - Google map of the art locations
 - enable customisation of 'treasures' to support businesses
 - capture visitor contact details at the end of their experience for redemption details, marketing and feedback opportunities, and report on user metrics.





QUESTIONS

TBM TUNNELLING UPDATE

TBM PROGRESS

TBM Joan

- Broke through at Parkville Station 27 August 2020
- Relaunched from Parkville Station 15 October 2020
- Broke through at State Library Station 20 December 2021
- Scheduled to relaunch from State Library Station end February 2021

TBM Meg

- Broke through at Parkville Station 19 September 2020
- Relaunched from Parkville Station 4 November 2020
- Has currently completed approximately 790m (of 970m)

STATE LIBRARY STATION

TBM BREAKTHROUGH DECEMBER 2020



STATE LIBRARY BREAK THROUGH



CROSS PASSAGE CONSTRUCTION

- Cross passage 10 (Church Street) – break in and excavation programmed to commence early February
- Cross passage 11 (Canada Lane) – break in and excavation programmed to commence early February
- Cross passage 12 (south west corner of Queensberry and Swanston streets) - break in and excavation programmed to commence mid February
- Cross passage 13 (south of Lonsdale Street) - break in and excavation programmed to commence August 2021
- Cross passage 14 (between Little Bourke and Bourke streets) - break in and excavation programmed to commence August 2021



Permanent lining works complete (CP4)

QUESTIONS