



DOMAIN COMMUNITY REFERENCE GROUP

6 SEPTEMBER 2017





PROJECT OVERVIEW

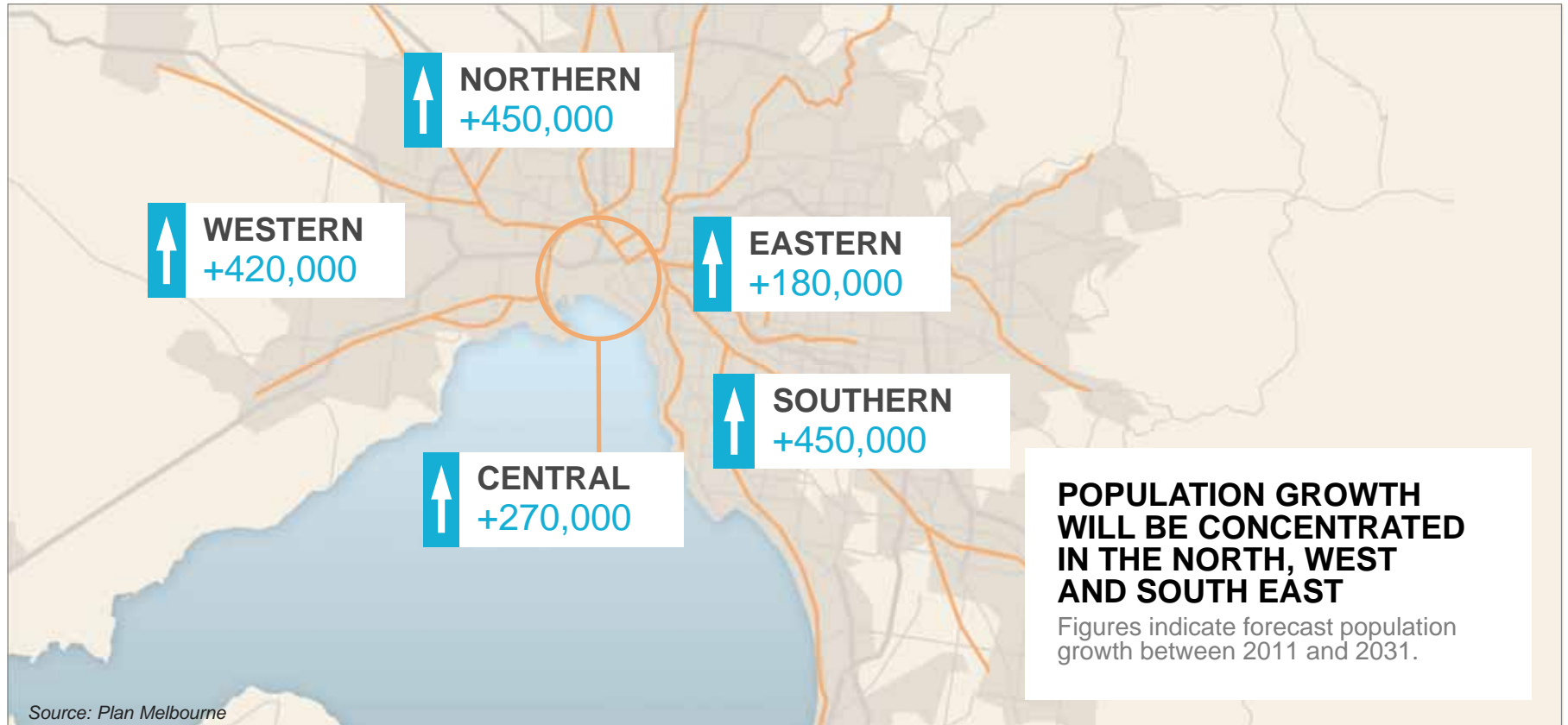
Evan Tattersall, CEO
Melbourne Metro Rail Authority



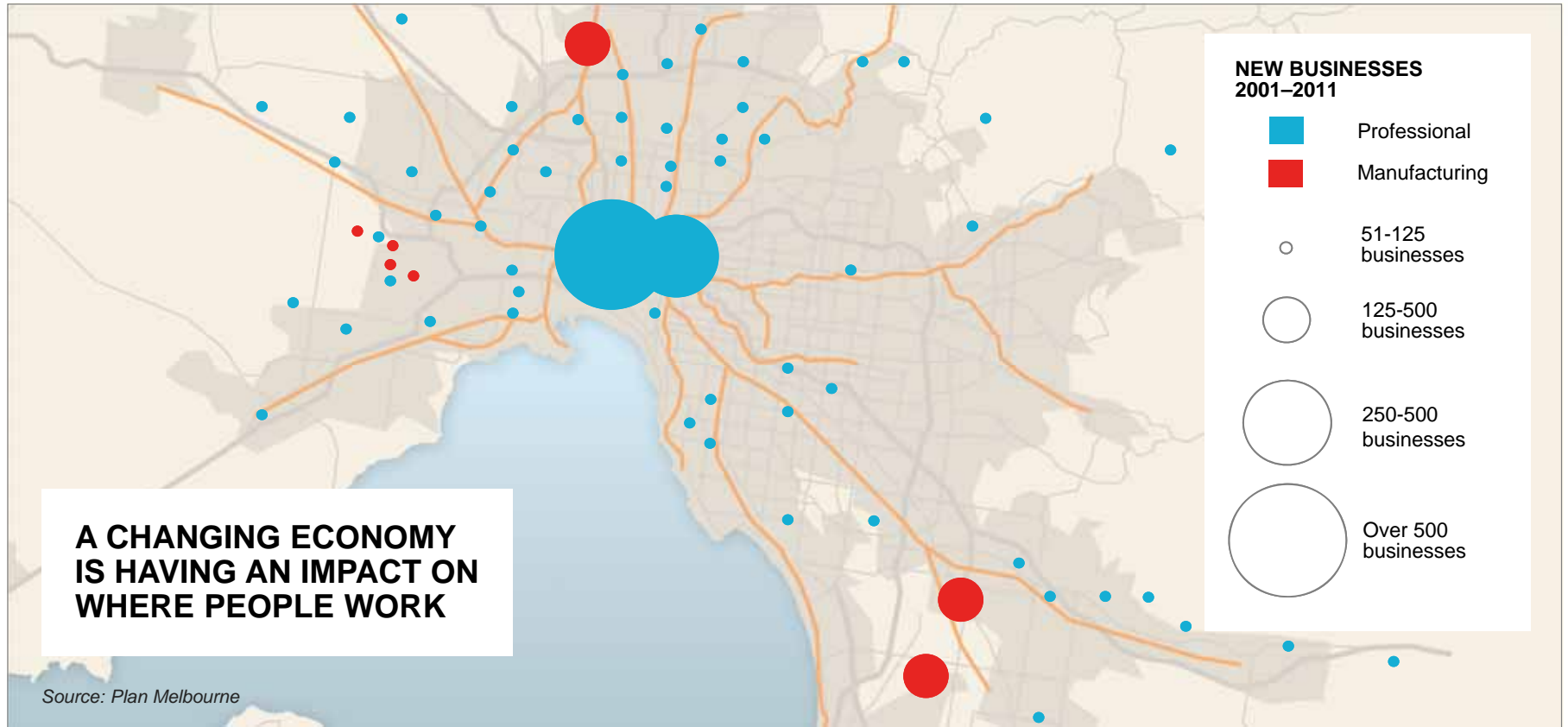
MELBOURNE'S CHALLENGES



POPULATION GROWTH



NEW BUSINESS GROWTH





A GLOBAL TREND

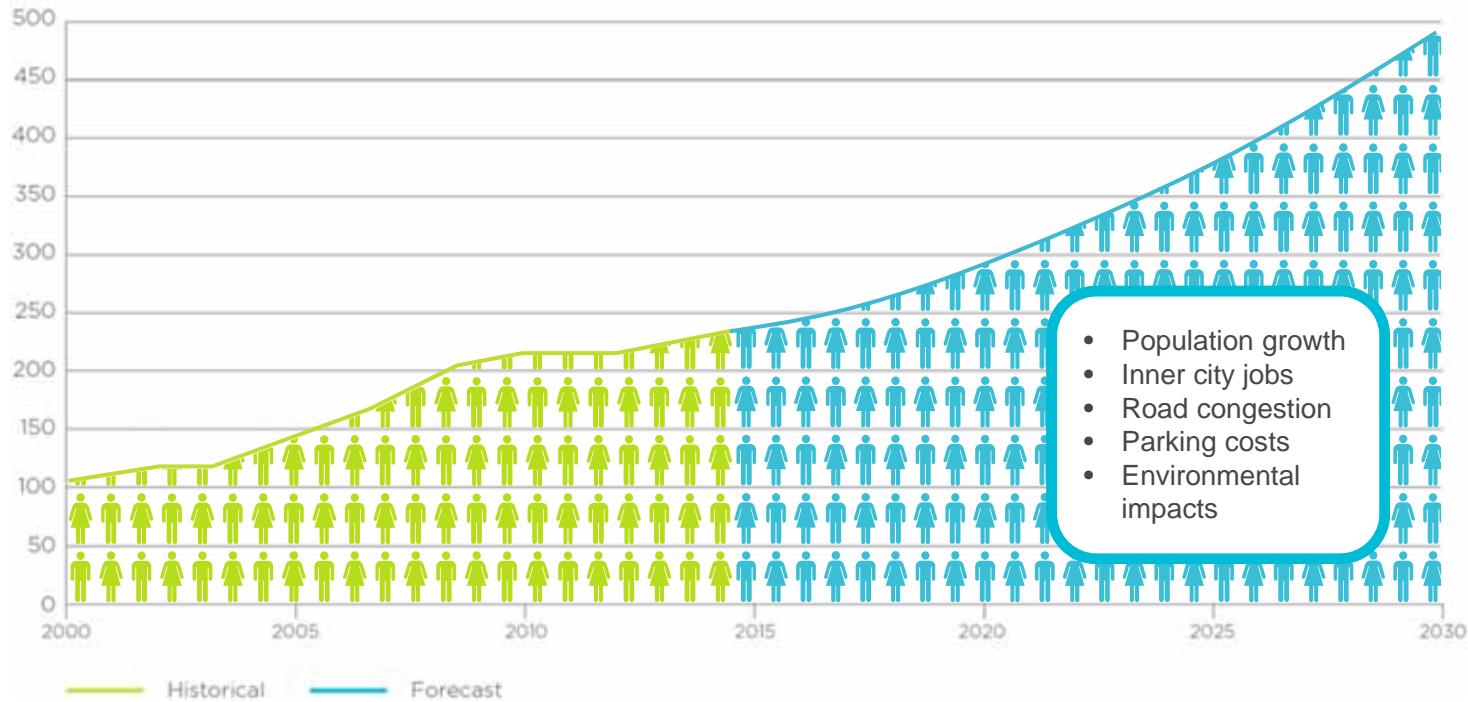


Current rail tunnel projects around the world

MELBOURNE'S RAIL NETWORK

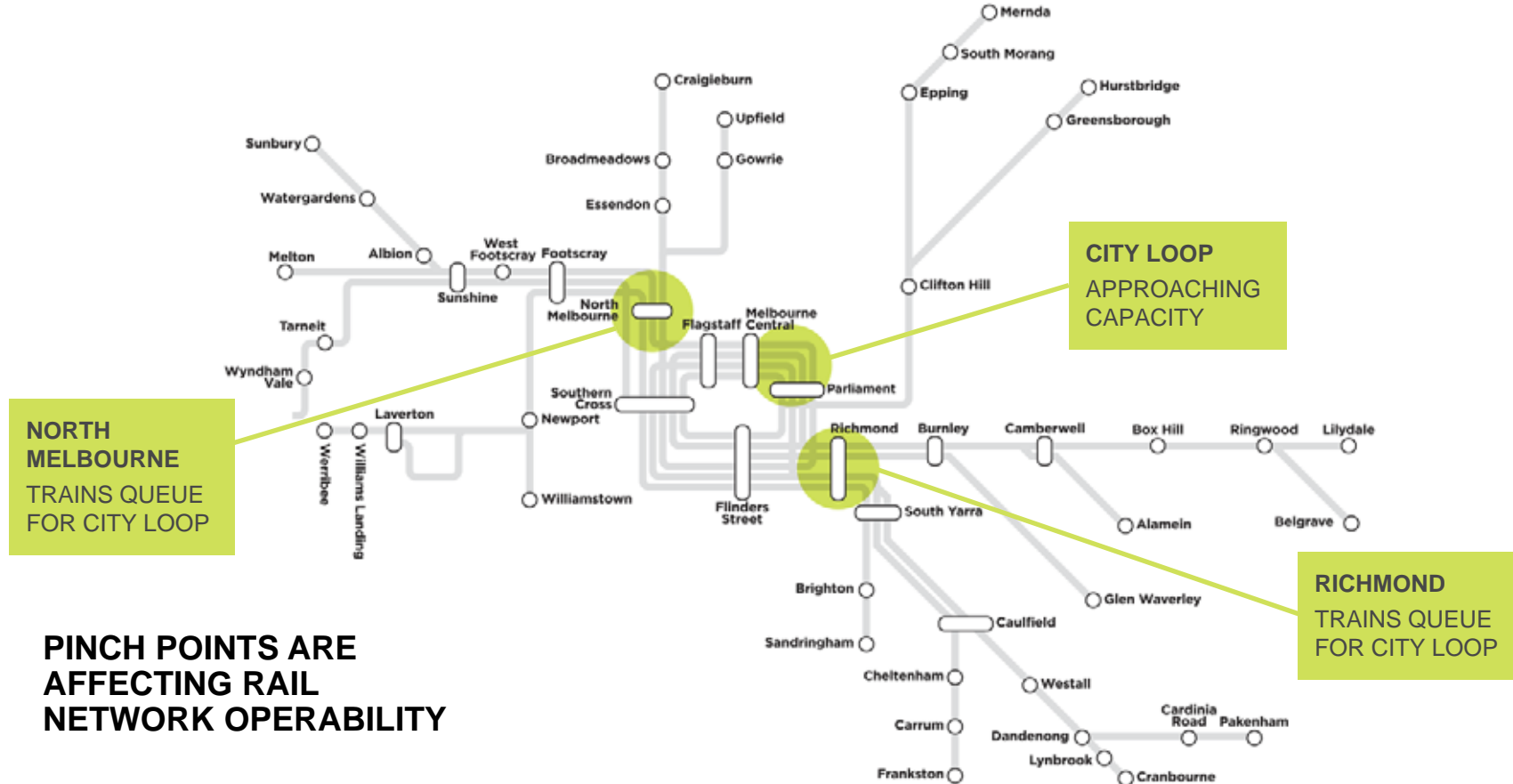
FUTURE RAIL PATRONAGE

Annual patronage millions





RAIL NETWORK PINCH POINTS



PINCH POINTS ARE AFFECTING RAIL NETWORK OPERABILITY



TRAM PINCH POINTS

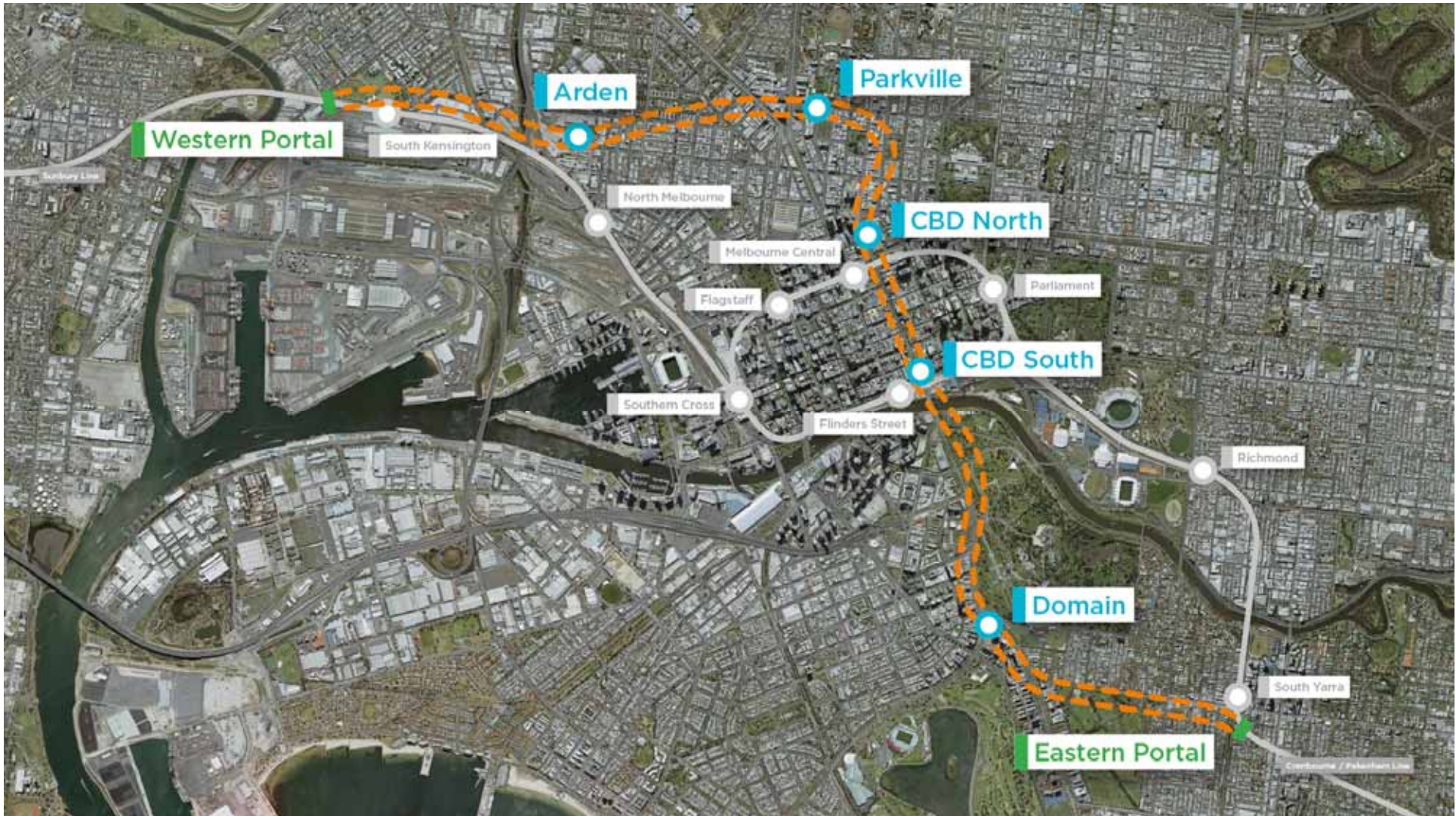


**ACCESS TO PARKVILLE
TRAMS APPROACHING
CAPACITY**

**ACCESS TO ST KILDA
TRAMS APPROACHING
CAPACITY**

**PINCH POINTS ARE
AFFECTING CBD
TRANSPORT OPERABILITY**

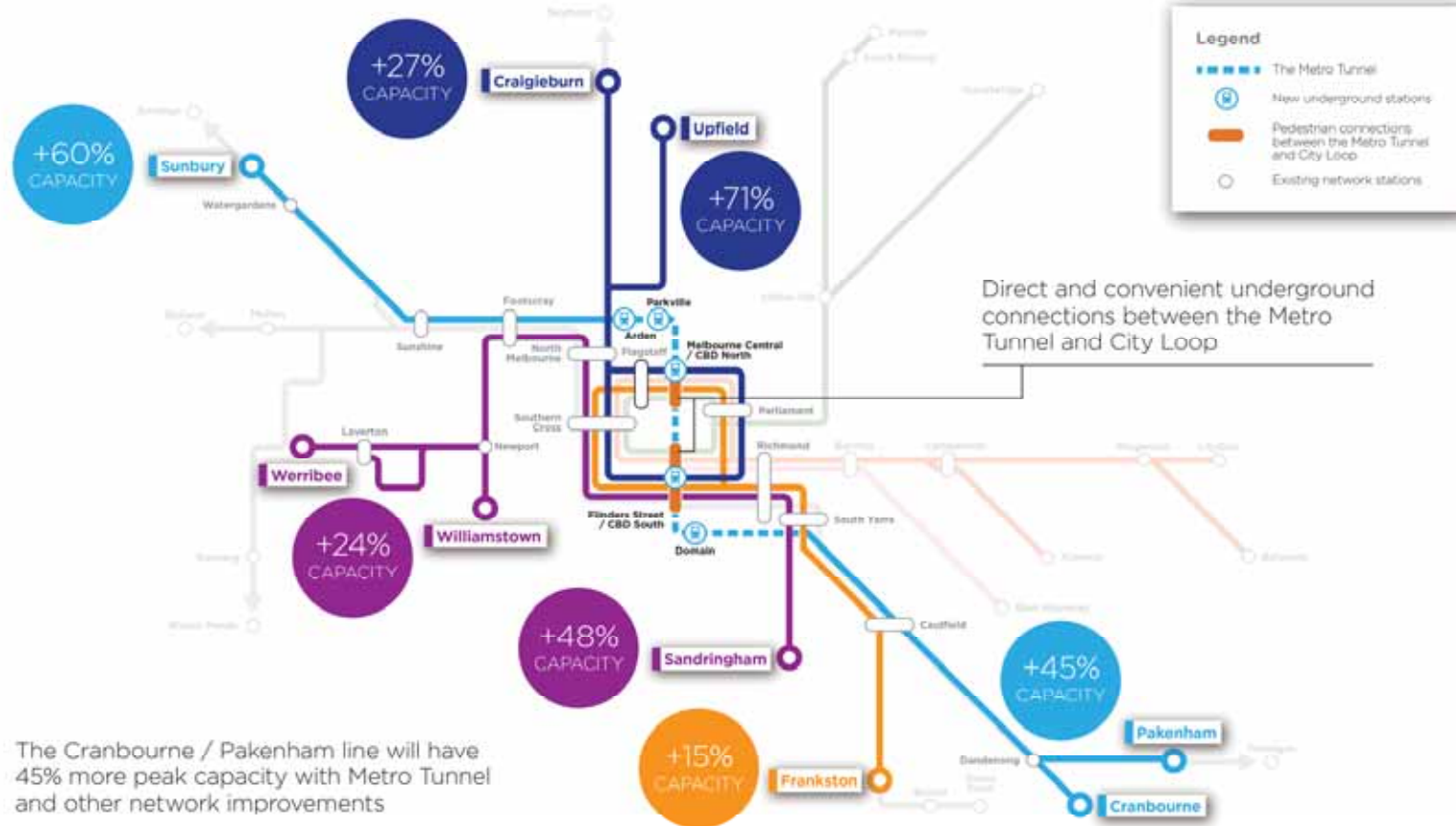
METRO TUNNEL PROJECT





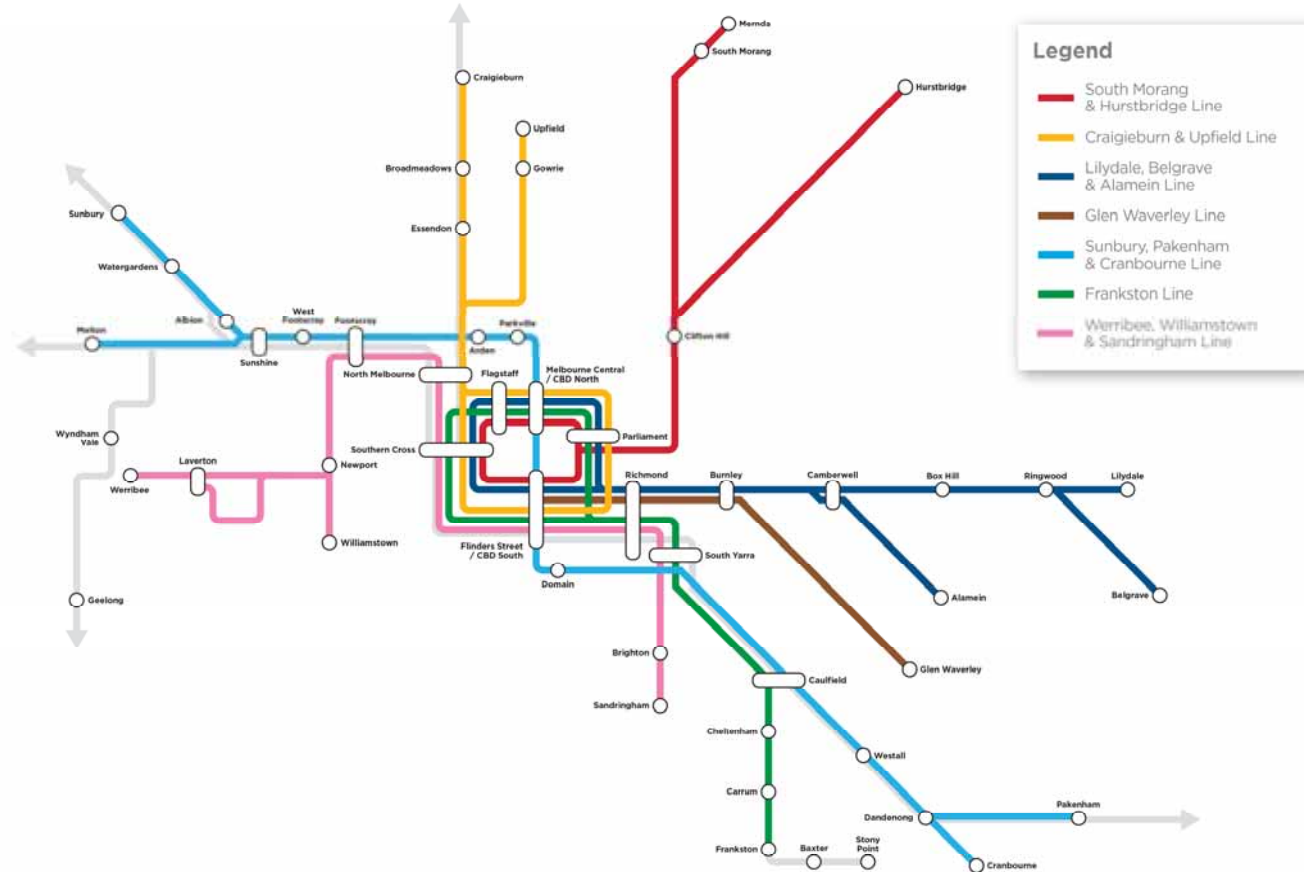


CAPACITY BENEFITS





METRO RAIL NETWORK MASTER PLAN





TRAMS WHERE THEY ARE NEEDED

INCREASING GROWTH AND DEMAND FOR TRAM SERVICES MELBOURNE CBD'S WEST AND NORTH-WEST AND DOCKLANDS

RELIEVE CONGESTION AND RELIANCE ON TRAMS ALONG SWANSTON ST / ST KILDA RD

METRO TUNNEL IS THE CATALYST FOR PTV TO MODERNISE THE TRAM NETWORK



WORK PACKAGES



EARLY WORKS

- Utility services relocation, demolition, CBD access shafts and other preparatory works (Managing Contractor)
- Tram diversion works (Franchisee Works)
- Construction power (Utility Service Provider)

TUNNEL AND STATIONS (AVAILABILITY PPP)

- 9km twin tunnels and five underground stations including fit-out
- Mechanical and electrical systems
- Tunnel and stations maintenance
- Rail systems installation within the tunnel

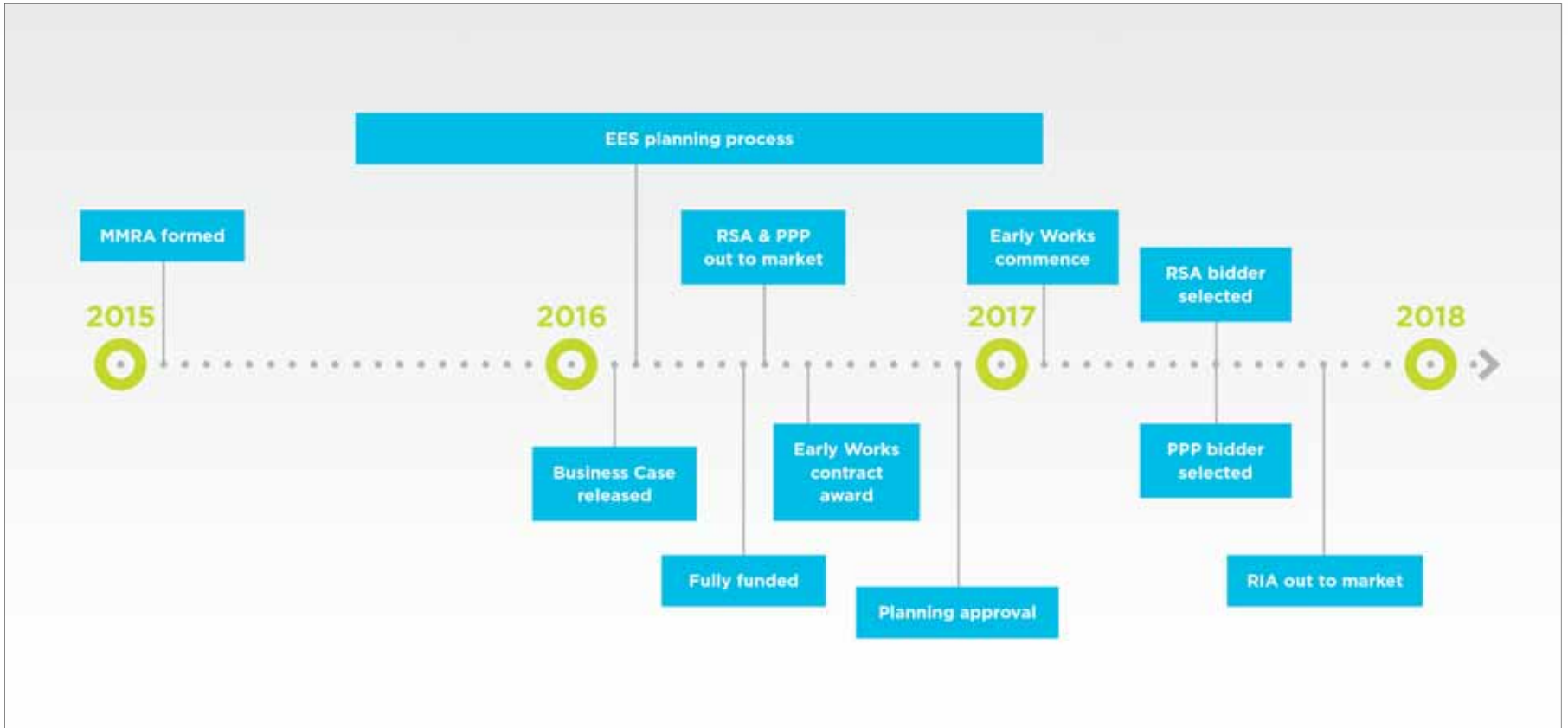
RAIL INFRASTRUCTURE (ALLIANCE)

- Eastern and Western Portals
- Integration of portal with existing rail networks (civil track, overhead line equipment, signalling)
- Eastern and Western Turnback
- Wider network enhancements

RAIL SYSTEMS (ALLIANCE)

- High capacity signalling
- Conventional signalling upgrades and modifications
- Communication systems
- Platform screen doors
- Train control and operational control systems
- Systems integration and end-to-end commissioning

MILESTONES



STATIONS



ARDEN





ARDEN





ARDEN





PARKVILLE





PARKVILLE





PARKVILLE





CBD NORTH





CBD NORTH





CBD SOUTH





CBD SOUTH





CBD SOUTH





CBD SOUTH





COLLINS STREET

FLINDERS LANE

CBD NORTH STATION

DOMAIN STATION

PEDESTRIAN CONNECTION TO
CITY LOOP SERVICES, FLINDERS ST STATION,
SWANSTON ST AND FEDERATION SQUARE



DOMAIN





DOMAIN





ALBERT ROAD RESERVE

TRAM/TRAIN INTERCHANGE

ST KILDA ROAD

CAULFIELD STATION

CBD SOUTH STATION

NEXT STEPS



2017

- Construction underway (e.g. site preparation, shafts)
- Property acquisition
- PPP & RSA contract award
- Road network changes



2018

- Development of detailed design
- Major construction on tunnels and stations
- RIA contract award



2026

- Target completion

QUESTIONS?



JOHN HOLLAND MANAGING CONTRACTOR - EARLY WORKS

Sarah MacNish, Precinct Manager – Domain & Eastern Portal
John Holland





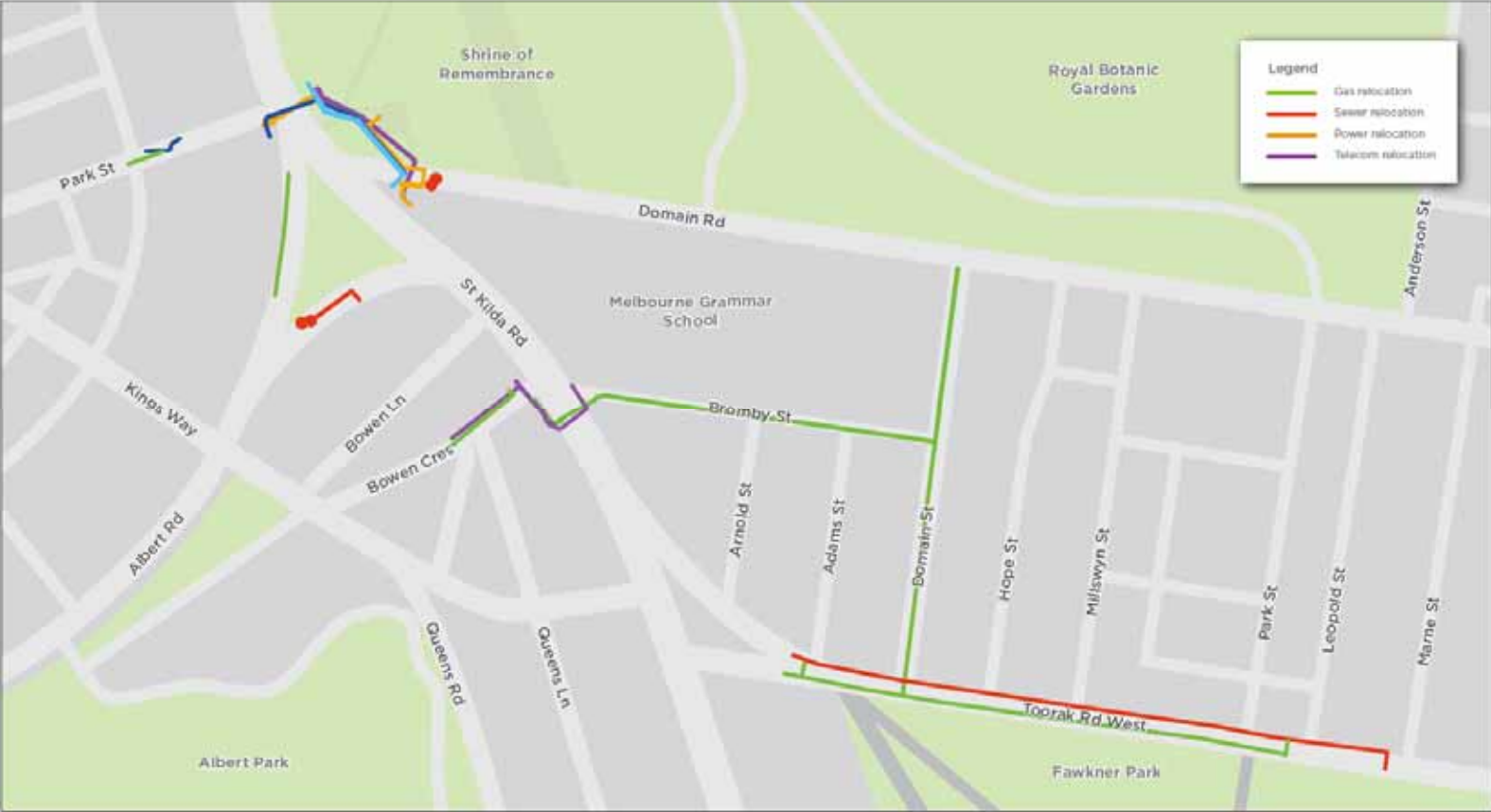
DOMAIN PRECINCT – EARLY WORKS

John Holland was appointed as the Managing Contractor for the Early Works package.

Early Works within the Domain Precinct include:

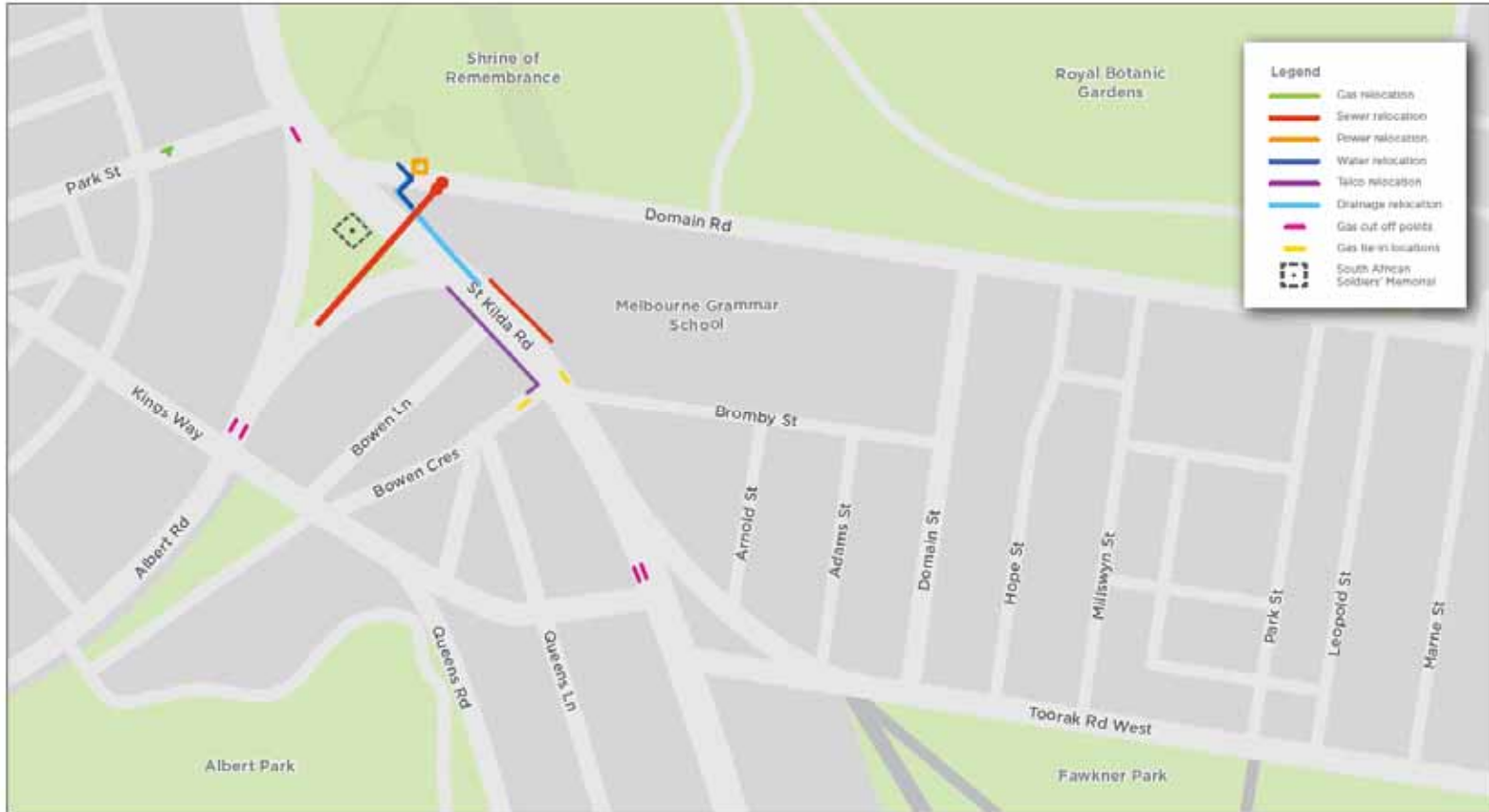
- The relocation of utilities including gas, power, water, drainage, sewer and telecommunication services
- The relocation of the South Yarra Main Sewer beneath the Domain Station
- The removal and temporary storage of the South African Soliders' Memorial
- Road and traffic network enhancements to support the road network during main works

METRO TUNNEL DOMAIN PRECINCT – COMPLETED WORKS



Indicative only

METRO TUNNEL DOMAIN PRECINCT- REMAINING/ CURRENT WORKS



Indicative only



DOMAIN PRECINCT - CURRENT WORKS EXPECTED COMPLETION

- Gas Service Commissioning works – end of October 2017
- Communications Installation & relocation works – late October 2017
- Power service relocation works – mid- October 2017
- Water works –mid- October 2017
- South Yarra Main Sewer –late December 2017
- South African Soldiers' Memorial –late December 2017
- Road and traffic network enhancements – January 2018



ALBERT ROAD SEWER WORKS





TOORAK ROAD WEST TRAM WORKS



PARK STREET TRAM STOP

