



## KENSINGTON AND NORTH MELBOURNE COMMUNITY REFERENCE GROUP

---

22 MARCH 2018



# GENERAL PROJECT UPDATE

- Sunbury to Cranbourne and Pakenham rail corridor Planning process underway
  - MMRA will be seeking feedback from Councils, stakeholders and broader community along the Sunbury to Cranbourne / Pakenham rail corridor from **Friday 23 March to Saturday 21 April 2018**
- Tunnel boring Machines have been ordered
- Arden and Anzac temporary electrical substation completed March 2018
  - Substation to provide power for the tunnel boring machines required to build the Metro Tunnel



# JOHN HOLLAND UPDATE



## JOHN HOLLAND MANAGING CONTRACTOR - EARLY WORKS

---

Andrew Browne, Senior Project Engineer – Western Portal





**ARDEN**

## Laurens St reinstatement works

- Road reinstatement works to take place on the western side of Laurens St (immediately north of intersection with Queensberry)
- Works date TBC, likely to be soon after Easter
- Contra-Flow traffic to be set up throughout worksite to maintain traffic flow

## Pile Removal within site compound

- Piles located on far western side of compound to be removed
- Civil works being planned on weekdays up until 9pm during week commencing 26 of March
  - Low level noise impact
- Break out of piles planned for after Easter
  - Mid level noise impact during break out of top sections. Noise impact will reduce dramatically as depth increases.



# WESTERN TUNNEL ENTRANCE

# HV TOWER RELOCATION





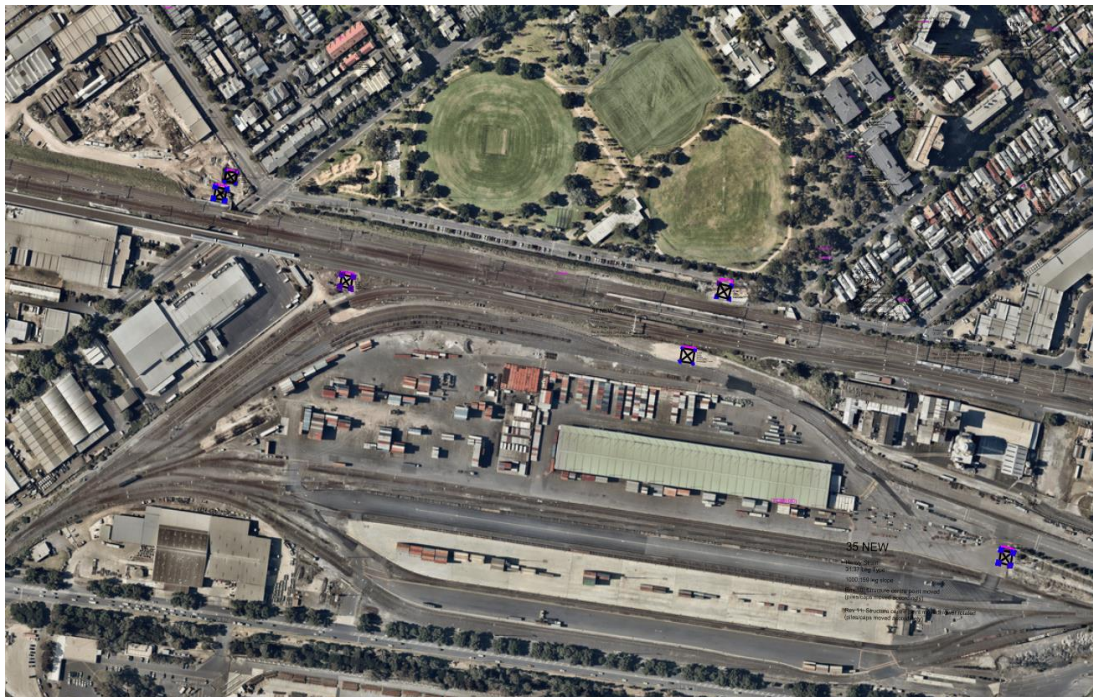
# WORKS UPDATE – TEMP RE-STRINGING



# WORKS UPDATE – TOWER FOUNDATIONS



# UPCOMING WORKS



Works	Date	Impact
Temporary tower Re-stringing	TBC	<ul style="list-style-type: none"> <li>Closure of Childers St for 1 weekend</li> </ul>
Permanent tower Re-stringing	April and Early May	<ul style="list-style-type: none"> <li>Intermittent weekend closures of Childers St</li> <li>Short term closures of Kensington &amp; Hobsons roads (&lt;1hr)</li> <li>Night Works (low noise emissions)</li> </ul>
De-stringing (removal of current power lines crossing railway tracks)	Early to Mid May	<ul style="list-style-type: none"> <li>Works to be performed at night (low noise emissions), and includes night closure of Childers St</li> </ul>
Removal of three towers (two existing and one temporary)	Early to Mid May	<ul style="list-style-type: none"> <li>Closures of Childers St</li> </ul>



**QUESTIONS?**



# VICTORIAN PLANNING AUTHORITY UPDATE

# Planning for Arden

## *Metro Tunnel – Community Reference Group*



**Kate Alder**  
Strategic Planning Manager

22 March 2017

# PLANNING FOR ARDEN

## Purpose

- Update on the planning progress for Arden.
- Update on the next planning steps and proposed timeframes.

## Goals for Arden

- Ensure Arden's success as an exemplar of urban renewal.
- Combine economic, social and environmental outcomes



# PLANNING FOR ARDEN

---

## Planning Process to Date

- Mar 2012: ***Arden-Macaulay Structure Plan***  
Sets out City of Melbourne's vision for the wider precinct.
- Feb 2015: **Melbourne Metro Project**  
Creation of the MMRA and funding to begin the Metro Tunnel
- Sep 2016: **Draft Arden Vision & Framework**  
Released for stakeholder and community consultation
- Apr 2017: **Arden Engagement & Feedback Summary**  
Summary of feedback received during consultation on the 2016 draft
- 2018: **Arden Vision**  
Finalisation of the vision for Arden, shaped in consultation with stakeholders
- Next steps: **Structure plan, planning scheme amendment and implementation plan**

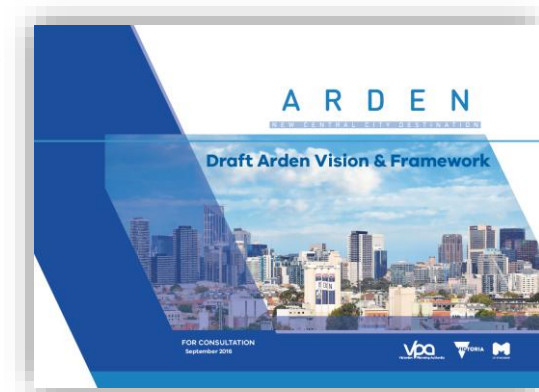




# PLANNING FOR ARDEN

## Draft Arden Vision and Framework

- Policy position for government to capitalise on the \$11 billion Metro Tunnel Investment
- Establishes the scale and nature of opportunity; negotiables and non-negotiables
- Prepared with extensive cross-government engagement
- Builds upon the urban renewal directions of the City of Melbourne's *2012 Arden-Macaulay Structure Plan*



# PLANNING FOR ARDEN



6-WEEK  
CONSULTATION  
PERIOD



86 PEOPLE  
COMPLETED THE  
SURVEY



## Consultation showed broad support...

- Community Feedback:
  - Respect character and place while allowing the precinct to evolve
  - Support for better open space, affordable housing and community facilities.
  - Improving Moonee Ponds Creek, and fixing drainage and flooding challenges through the site.
  - Improving walking, cycling, and public transport access with better transport connections
  - Early activation, including the provision of community infrastructure
  - Concerns about density
- Business feedback
  - Impact on viability
  - Opportunities for business relocation
  - Developer contributions / value capture



# PLANNING FOR ARDEN

---

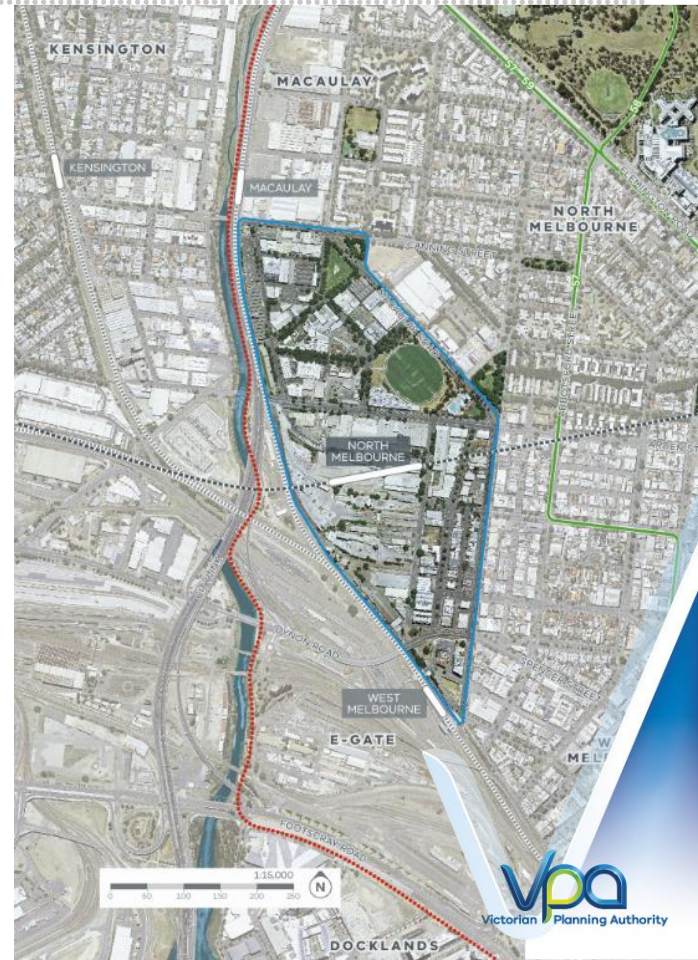
## Changes made to the final vision for Arden

- Clarity on Arden's economic narrative
- Two to four new schools
- Range of affordable housing measures
- Proposed open space along Moonee Ponds Creek.
- Investigation areas for combining flood mitigation and open space.
- Traffic management associated with the West Gate Tunnel project.
- Five key directions have been expanded to eight to capture these changes and feedback through consultation.



### The Final *Arden Vision*

- *Arden Vision* is a high level plan to guide future structure planning in the precinct, anchored by a vision and eight key directions.
- This sets the scope and aspirations for the precinct to be delivered by the Arden Structure Plan
- The *Arden Vision* has been renamed from the Draft Arden Vision & Framework to better reflect its scope.



# PLANNING FOR ARDEN

---

## Next Steps

- The Arden Vision will be released in coming months.
- The Victorian Government and the City of Melbourne will then work together to prepare the Arden Structure Plan and planning scheme amendment to achieve the vision.
- The Arden Structure Plan will align with planning and key infrastructure in the area such as the Metro Tunnel and West Gate Tunnel projects
- Looking for community input and ideas about how to do it
- A draft Structure Plan is proposed to be exhibited in 2019.



# TRAFFIC AND TRANSPORT WORKING GROUP




## TRAFFIC AND TRANSPORT WORKING GROUP (TTWG)

---

Lachlan Lee-Archer, Operations Manager Surface  
Transport and Modelling  
Melbourne Metro Rail Authority





# TRAFFIC & TRANSPORT WORKING GROUP (TTWG) EXPLAINED

- What is the Traffic and Transport Working Group (TTWG)
- Who is on the TTWG
- What are the TTWG's Environmental Performance Requirements
- How do other parties have a say on transport management issues
- Assessment of St Kilda Road to one lane





# WHAT IS THE TRAFFIC & TRANSPORT WORKING GROUP (TTWG)

- TTWG is a technical working group of transport agencies and emergency services
  - authorities under legislation for elements of the transport network
  - unique and high priority road users (emergency services)
- Established in 2015 to help guide development of station precincts and the Environment Effects Statement traffic documentation
- Provides centralised discussion and agreement on key transport issues (NB: most transport issues have multiple approval authorities)
- Provides opportunities for third party collaboration and input
- TTWG does not get into the detail of individual sign placement on traffic management schemes



# WHO IS ON TTWG

- MMRA (Chair)
- MMRA contractors
- Transport for Victoria supported by PTV where required
- VicRoads
- Yarra Trams
- City of Melbourne
- City of Port Phillip
- City of Stonnington
- Victoria Police
- Ambulance Victoria
- Melbourne Fire Brigade

## ENVIRONMENTAL PERFORMANCE REQUIREMENTS (EPRS)

- TTWG was formalised through the Environment Management Framework as part of the project EES in 2016
- The Environment Management Framework established the Environmental Performance Requirements
- Key Transport Issues identified in the EPRs which reference TTWG include:
  - T2: Transport Management Plans including monitoring methodologies
  - T3: Network Enhancement Projects (NEPs)
  - T4: Public Transport access during construction
  - T5: Active transport access during construction
  - T7: Legacy road functional layouts and other road design matters
  - T9: Legacy active transport outcomes
- The above EPRs are managed “in consultation” with TTWG. (NB: TTWG as a body has no approval powers)

# THIRD PARTY INPUT

- EPR T2 – Transport Management Plans, provides for third party input from additional key stakeholders, to ensure that appropriate consultation is achieved
- TTWG often receives third party input from key stakeholders through:
  - Direct consultation with related stakeholders regarding a specific transport matter (eg. building access, site safety, major event planning etc)
  - Precinct Reference Groups established by MMRA in accordance with EPR SC11 and SC12
  - Key Stakeholder invites to attend a TTWG meeting where required



# COMMUNITY CONSULTATION

- EES process included extensive public consultation and set the baseline for community input on key transport issues
- CRG provides an opportunity for community and other stakeholder representatives to comment on transport matters to MMRA and its contractors
- Development plans, including transport matters were publicly advertised for comment, these may need to be revised with further public exhibition periods
- MMRA and its contractors are committed to open lines of communication with the public and maintain Metro Tunnel Project information Line and Contact Us



**QUESTIONS?**



# CROSS YARRA PARTNERSHIP UPDATE

# CROSS YARRA PARTNERSHIP





# Development Plan Update



# DEVELOPMENT PLAN UPDATE

- Early Works Plan: Approved 31st January 2018
- Arden Precinct Development Plan: Approved 8th March 2018
- Western Portal Development Plan: Public display from 6th April – 27th April 2018

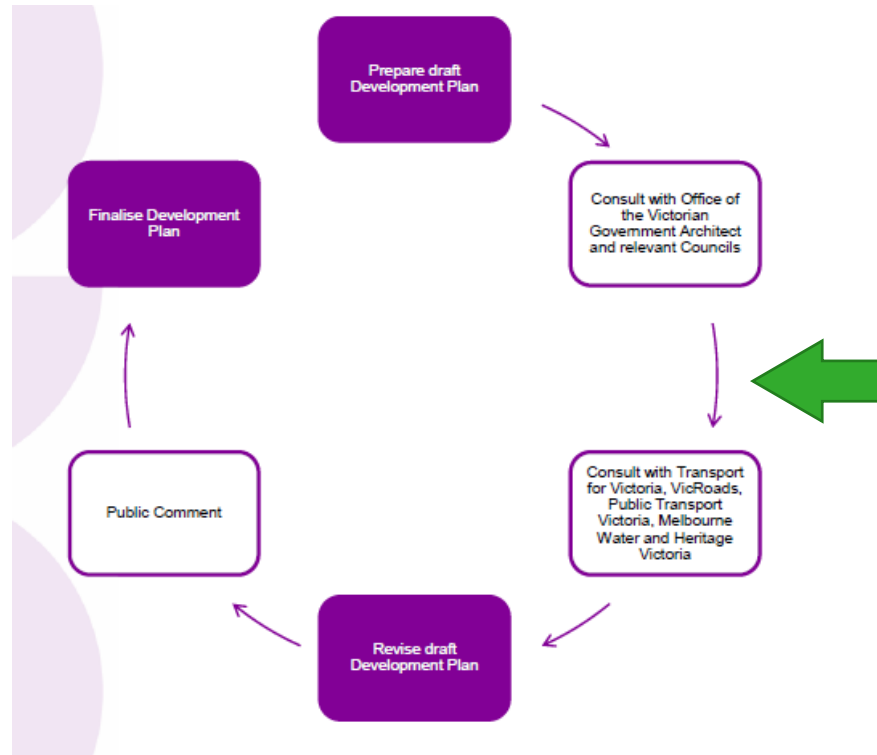
# INCORPORATED DOCUMENT REQUIREMENTS

- Approved by Minister for Planning prior to relevant works
- Content:
  - Site layout plan/s
  - Architectural, landscape and public realms and elevations
  - In accordance with Urban Design Strategy and Environmental Performance Requirements
- Consult with:
  - OVGA and relevant council/s
  - VicRoads, PTV, TfV, Melbourne Water and Heritage Victoria
  - Public inspection for 15 business days
- Can be prepared in stages or parts, may be amended

# CONTENT OF PORTAL DEVELOPMENT PLANS

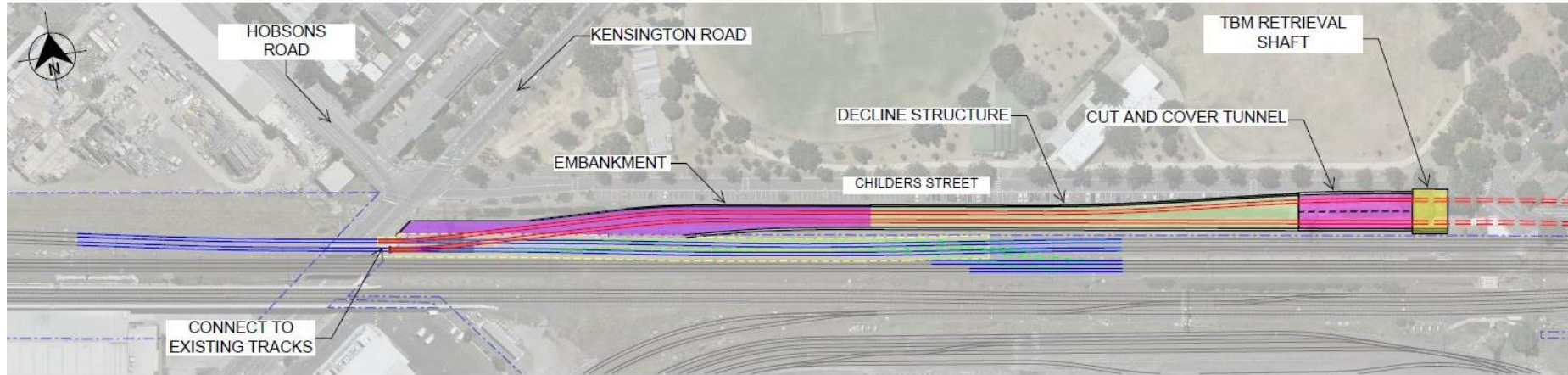
- Site context and project works – design information
  - Site plan/s
  - Architectural plans
  - Landscape/public realm plans
- Urban Design Strategy
  - Key directions – design response for each applicable guideline
  - Portal specific – design response for each applicable guideline
- Environmental Performance Requirements
  - Identify applicable EPRs
  - Design response for each applicable EPR

# DEVELOPMENT PLAN CONSULTATION PROCESS

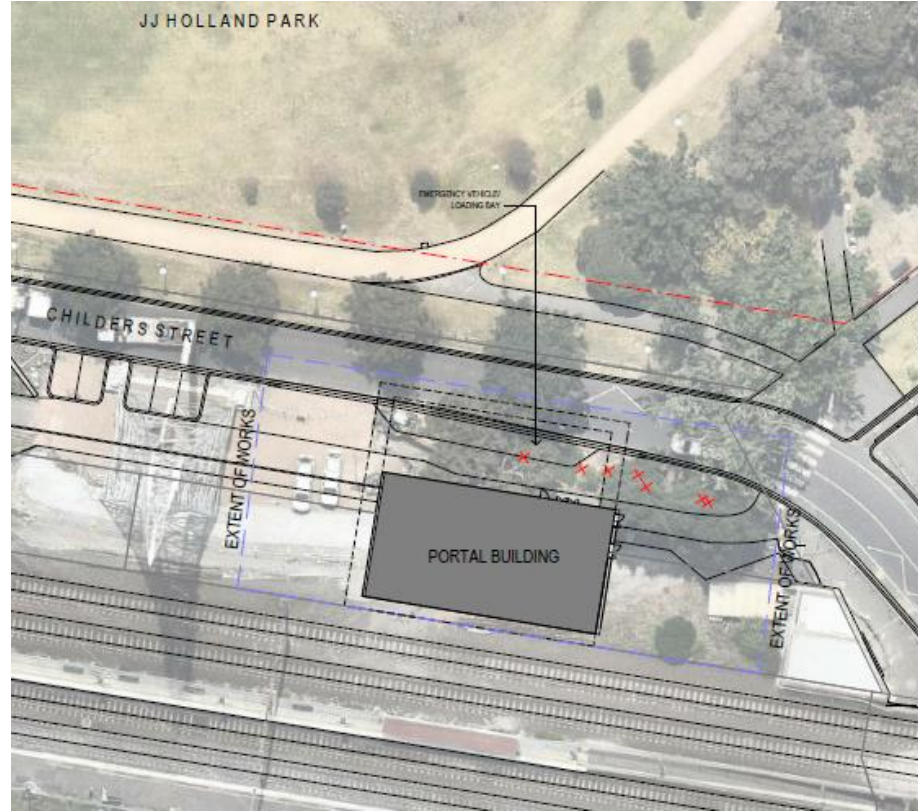


# WESTERN PORTAL DEVELOPMENT PLAN

- CYP Western Portal Development Plan scope covers egress shaft (represented as TBM retrieval shaft below) area only

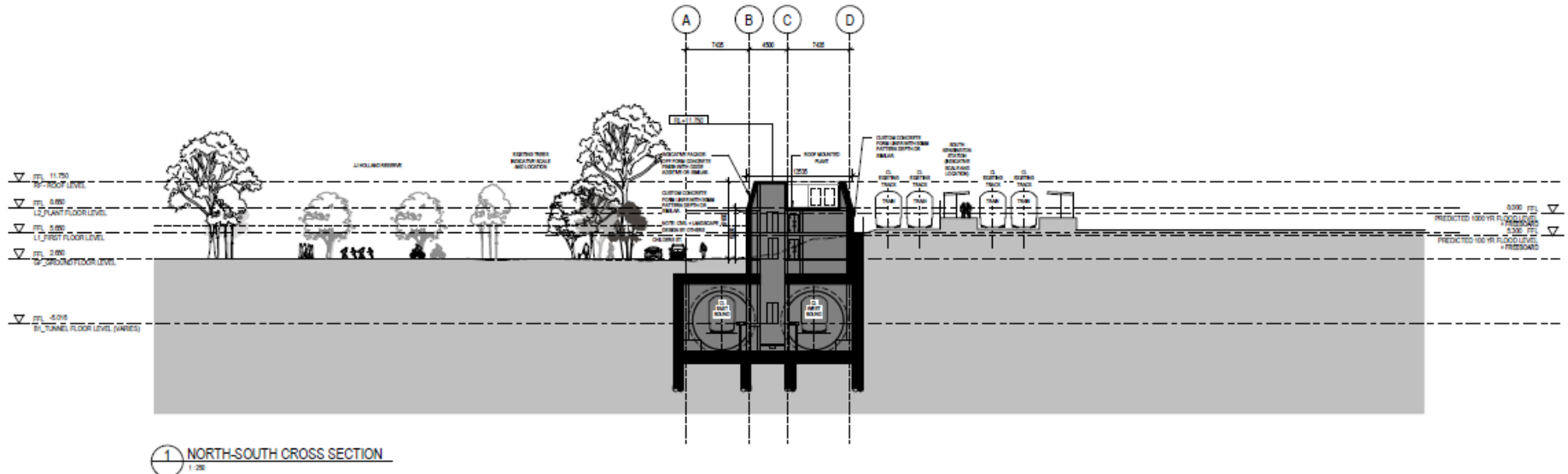


# LANDSCAPE AND PUBLIC REALM PLAN



# ARCHITECTURAL DESIGN RESPONSE

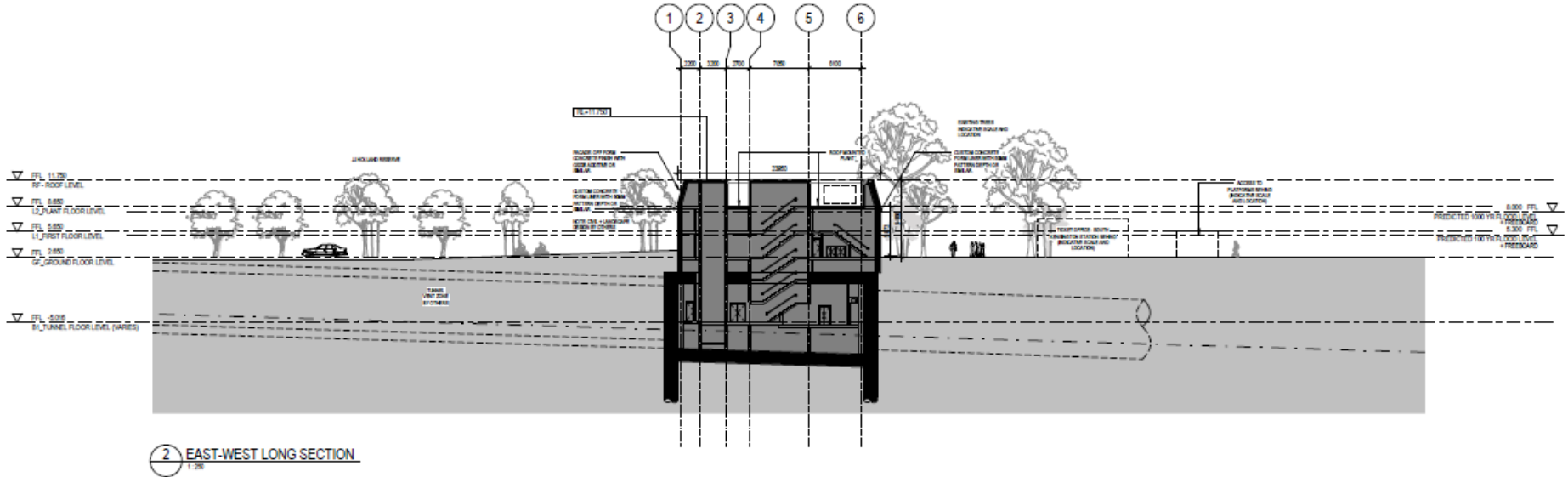
## North-south cross section





# ARCHITECTURAL DESIGN RESPONSE

## East-west long section



## MATERIALS AND FINISHES (INDICATIVE)



CUSTOM CONCRETE FORM LINER WITH 50MM PATTERN DEPTH.  
FINAL PATTERN TBC.



ACID ETCHED EXPOSED AGGREGATE CONCRETE



CONCRETE FINISH WITH OXIDE ADDITIVE. FINAL COLOUR TBC.

## NEXT STEPS – PUBLIC DISPLAY

- Public display: 6<sup>th</sup> April – 27<sup>th</sup> April 2018
- Community information sessions
  - 1
  - 2
- Will be advertised in The Age and Herald Sun
- Available to view on Metro Tunnel website
- Website will include questionnaire and opportunity to upload submissions
- Comment / response register will be prepared and submitted to Minister for Planning

# Noise and Vibration



# CONSTRUCTION NOISE AND VIBRATION ASSESSMENTS (CNVIAS)

- Construction Noise and Vibration Impact Assessments
- Developed by CYP acousticians
- Developed for each construction activity
- Inform project teams mitigation requirements and community consultation strategies
- Form part of the Construction Noise and Vibration assessment
  - Submitted to IEA/MMRA/IR for review
  - Early works – accepted for construction
  - Main works – North Melbourne with IEA for review.
- Day time works limits:
  - ‘Noise affected’ – 10 dBa above baseline levels
  - ‘Highly noise affected’ – 75 dBa

# CNVIAS – EARLY WORKS

## Western Portal – Complete (with MMRA for review)

Includes the following activities:

- Service relocation
- Road access changes and house demolition. Representing the works occurring close to receivers on Childers Street
- Truck deliveries
- Main works, includes: hoarding installation, car park removal, installation of site facilities, sucker trucks and tree clearing. Representing construction activities that could occur for a longer period

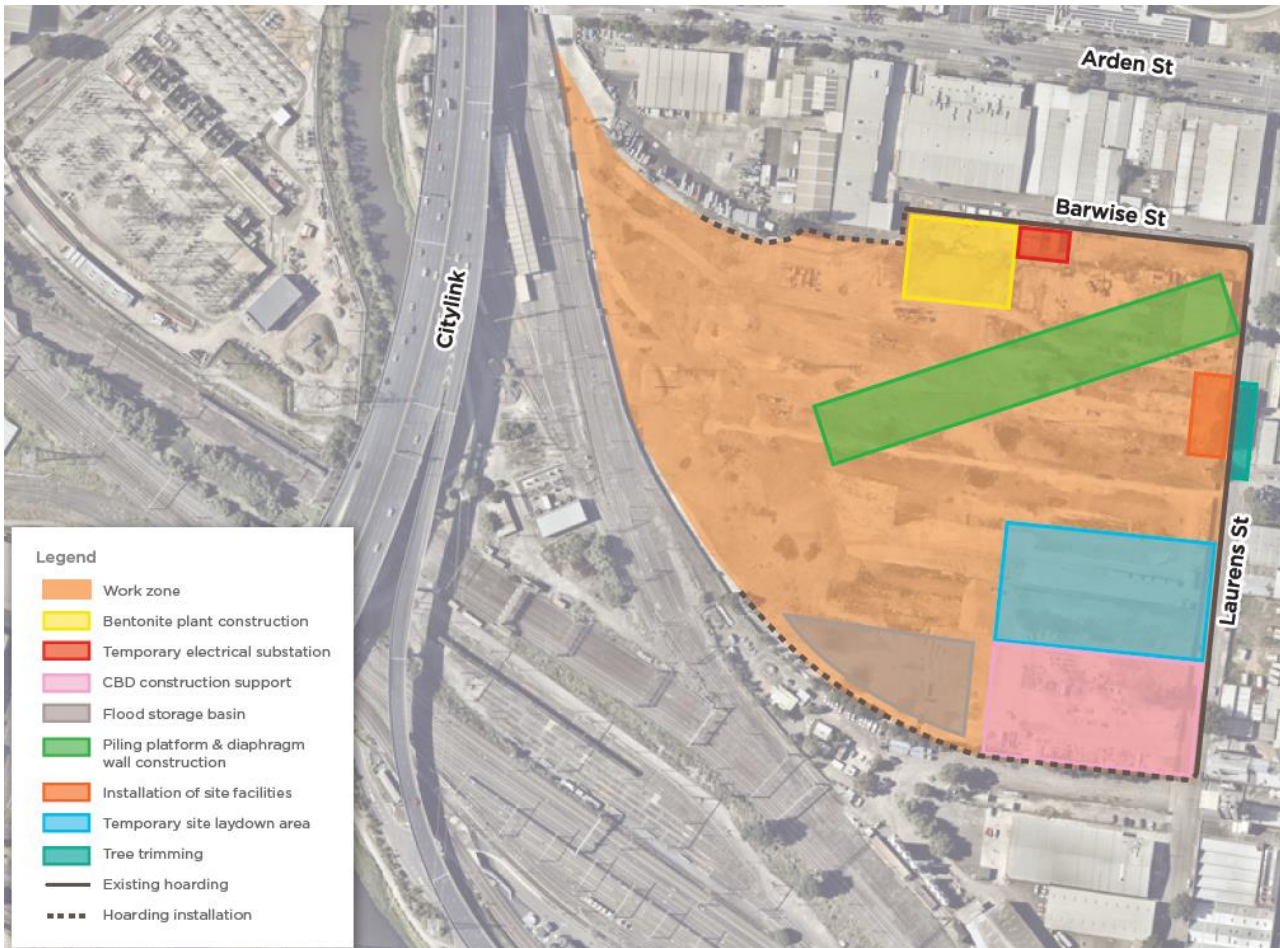
## North Melbourne – Approved for construction

Includes the following activities:

- Site facilities installation, including installation of site offices, piling platform and general site establishment
- Tree clearing
- Hoarding installation
- Hoarding upgrades, including upgrades to the existing chain wire fence
- Truck deliveries via two truck routes. This has the potential to occur outside normal working hours.
- Potential services relocation. This has the potential to occur outside normal working hours.
- Non-Destructive Digging (NDD) across the site

# Construction update







# NORTH MELBOURNE CONSTRUCTION PROGRAM

		2018											
		JAN	FEB	MAR	APR	MAY	JUN	JUL	AUG	SEP	OCT	NOV	DEC
	1. Issue IFC				■								
	2. Install hoarding			■	■								
	3. Construction Site offices and amenities			■	■	■	■						
	4. Platform construction			■	■	■							
<b>WEST SIDE</b>													
	5. D-Wall and Piling construction				■	■	■						
	6. Excavate and strut to base level							■	■	■			
	7. Base slab construction										■	■	
	8. TBM assembly												■
	9. TBM Excavation from Arden to Western Portal												
	10. TBM retrieval												
<b>EAST SIDE</b>													
	11. D-Wall and Piling construction							■	■	■	■	■	
	12. Excavate and strut to base level												■
	13. Base slab construction												
	14. TBM re-assembly												
	15. TBM Excavation from Arden to Parkville												

# WESTERN PORTAL PRECINCT

- Demolition of 135 Ormond – April 2018
- Site establishment and hoarding – May 2018
- Tree removal – commencing May 2018 (staged)
- Modifications to road network (Childers, Kensington, Derby, Tennyson) – May 2018
- Changes to traffic (Childers St shuttle flow with Tennyson diversion when required) – May 2018
- First full closure of Childers Street (gas protection works) – anticipated June 2018

# KENSINGTON CONSTRUCTION PROGRAM



	2018												2019											
	JAN	FEB	MAR	APR	MAY	JUN	JUL	AUG	SEP	OCT	NOV	DEC	JAN	FEB	MAR	APR	MAY	JUN	JUL	AUG	SEP	OCT	NOV	DEC
1. Issue IFC						█																		
2. Install hoarding					█	█																		
3. Construction Site offices and amenities					█																			
4. Piling platform construction						█																		
5. Piling construction						█	█	█	█															
6. Excavate and strut to base level									█	█	█	█	█	█	█	█	█	█						
7. TBM retrieval																			█	█	█	█	█	█

# Questions?





# DISCUSSION / OTHER BUSINESS

