



KENSINGTON AND ARDEN COMMUNITY REFERENCE GROUP

03 MAY 2018

GENERAL PROJECT UPDATE

Rail Projects Victoria

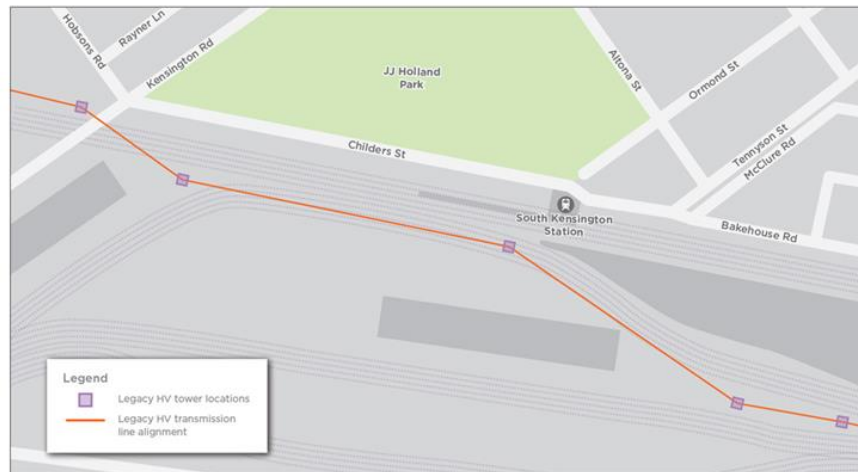
- Melbourne Metro Rail Authority is changing its name to **Rail Projects Victoria**
- No change to the way we engage with you

Rail Infrastructure Alliance

- On track for contract award in third quarter 2018
- Early Works Plan for RIA on public exhibition mid-2018
- Works begin in Kensington fourth quarter 2018; site establishment, geotechnical and utility investigations, offset carpark construction, and minor civil works

HIGH VOLTAGE TOWER UPDATE

- Community meeting held on Tuesday 10 April
- Actions:
 - Further technical information regarding the assessment of options and the constraints that governed the final location
 - Screening options
 - Meeting with community representatives in the coming weeks





JOHN HOLLAND UPDATE



JOHN HOLLAND MANAGING CONTRACTOR - EARLY WORKS

Andrew Browne, Senior Project Engineer – Western Portal

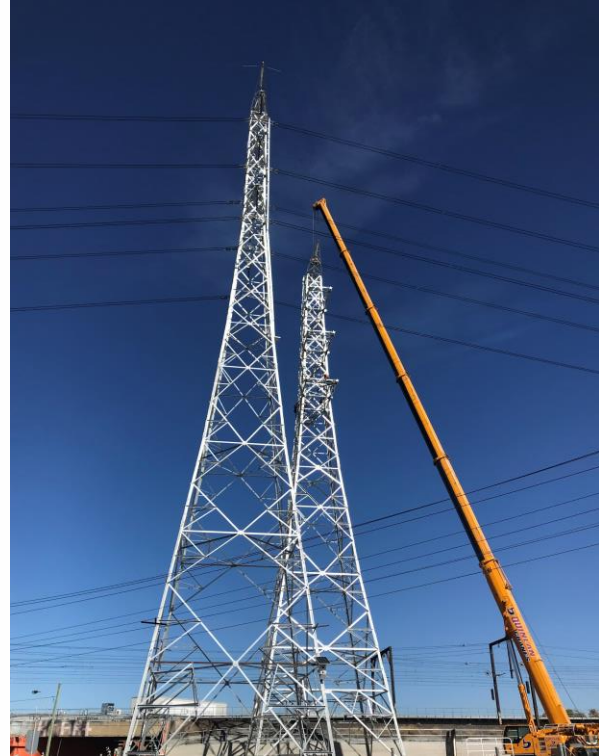


WESTERN TUNNEL ENTRANCE

WORKS COMPLETED TO DATE



- Construction of towers 33T, 33N, 34T, 34N, and 35N complete
- Temporary stringing complete
- Permanent stringing commenced



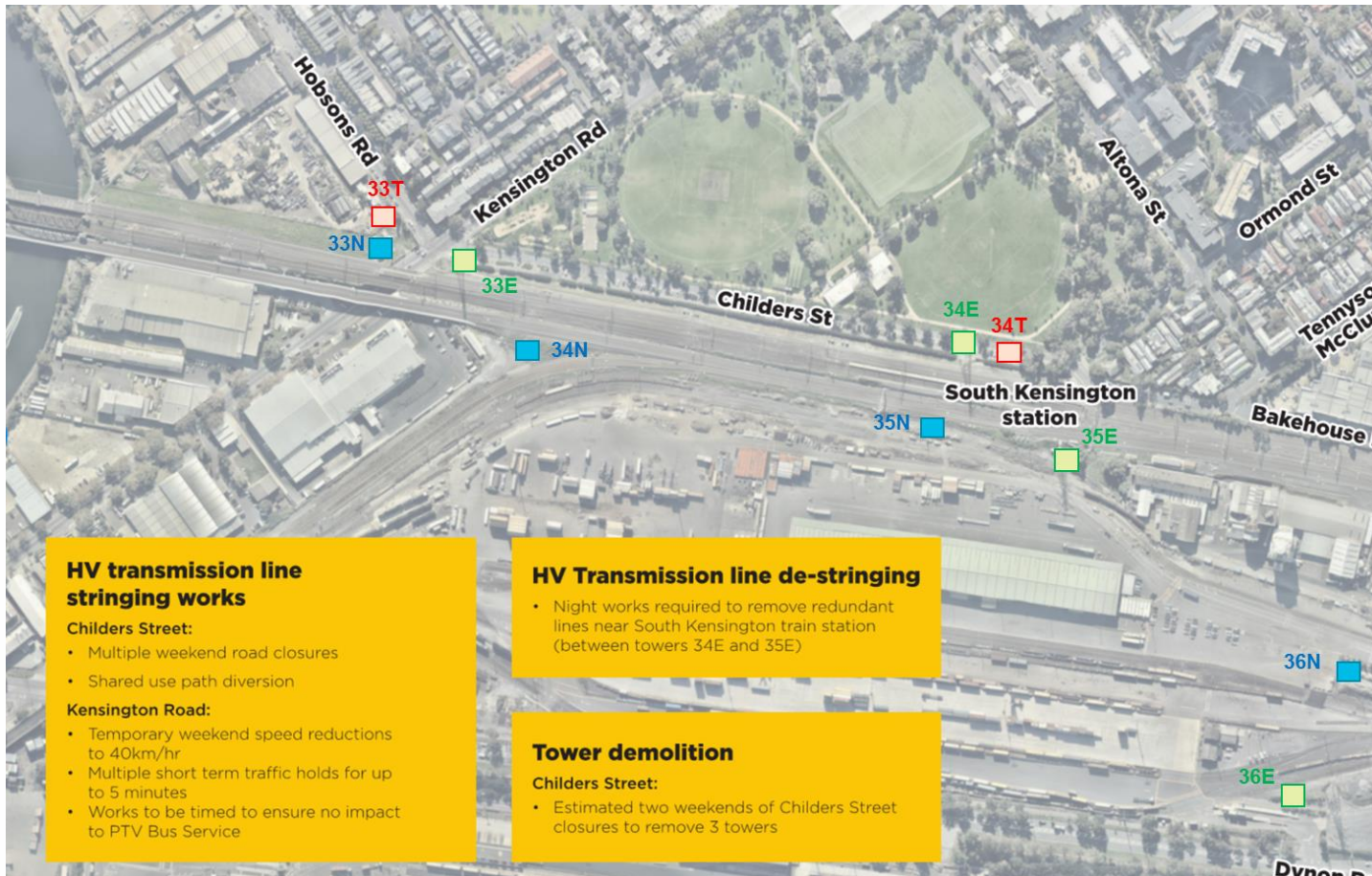
Transmission Line Stringing Works

- Installation of new lines spanning towers 33N to 34N to 35N
- Transfer of lines from 33T to 33N
- Installation of new lines from 35N to 36E
- Transfer of lines from 36E to 36N
- De-stringing from 34T/34E to 35E

Tower Demolition/Relocation

- Demolition of towers 33T, 33E, 34E, and 35E
- Relocation of tower 34T to 36N location

EARLY WORKS IMPACTS – MAY & JUNE



HV transmission line stringing works

Childers Street:

- Multiple weekend road closures
- Shared use path diversion

Kensington Road:

- Temporary weekend speed reductions to 40km/hr
- Multiple short term traffic holds for up to 5 minutes
- Works to be timed to ensure no impact to PTV Bus Service

HV Transmission line de-stringing

- Night works required to remove redundant lines near South Kensington train station (between towers 34E and 35E)

Tower demolition

Childers Street:

- Estimated two weekends of Childers Street closures to remove 3 towers



QUESTIONS?

CROSS YARRA PARTNERSHIP



Arden Update



WORKS UPDATE

- Ongoing site establishment works
- Diaphragm-wall (D-wall) construction – commencing early May
 - Including commissioning of bentonite plant
- Piling platform construction - commenced
- Piling – commencing mid-May
- Concreting of internal site haul routes – commencing mid-May
- Additional hoarding installation and gate modifications – May
- Ongoing use as staging area for CBD construction support – until approx. June
- Construction of concrete batching plant – commencing June (anticipated)

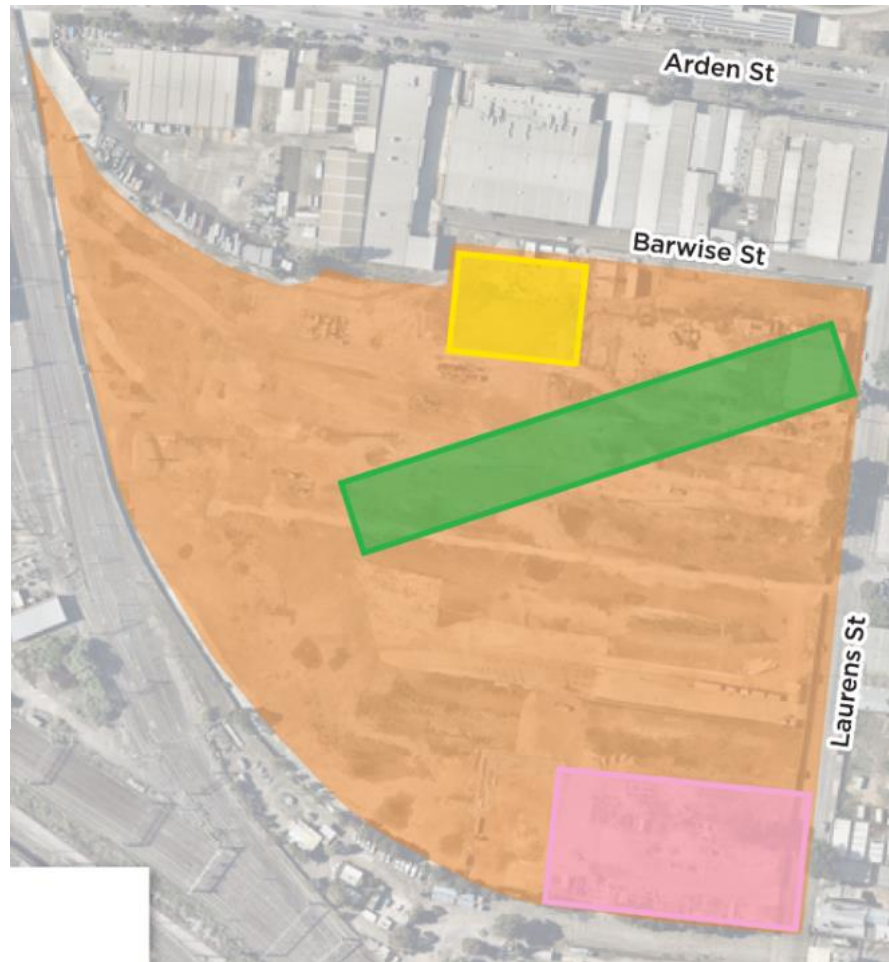
ARDEN 2018 CONSTRUCTION PROGRAM (INDICATIVE)

		2018											
		JAN	FEB	MAR	APR	MAY	JUN	JUL	AUG	SEP	OCT	NOV	DEC
	Install hoarding					■							
	Construction Site offices and amenities			■	■	■	■						
	Platform construction			■	■	■							
WEST SIDE													
	D-Wall and Piling construction					■	■	■					
	Excavate and strut to base level						■	■	■	■			
	Base slab construction										■	■	
	TBM assembly												■
	TBM Excavation from Arden to Western Portal												
	TBM retrieval												
EAST SIDE													
	D-Wall and Piling construction							■	■	■	■		
	Excavate and strut to base level											■	■
	Base slab construction												
	TBM re-assembly												
	TBM Excavation from Arden to Parkville												

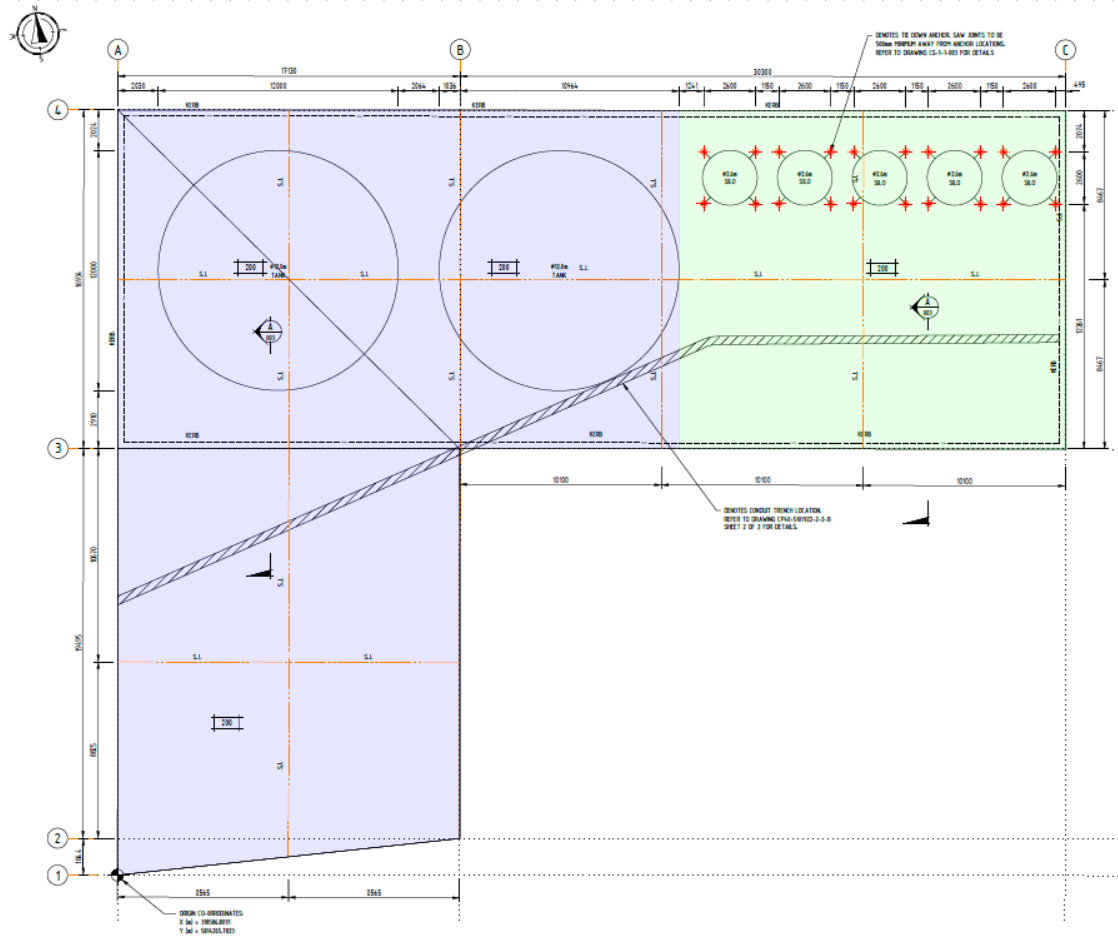
BENTONITE & CONCRETE BATCHING PLANTS

Legend

-  Work zone
-  Bentonite plant
-  Concrete batching plant (future location)
-  Piling platform & diaphragm wall construction



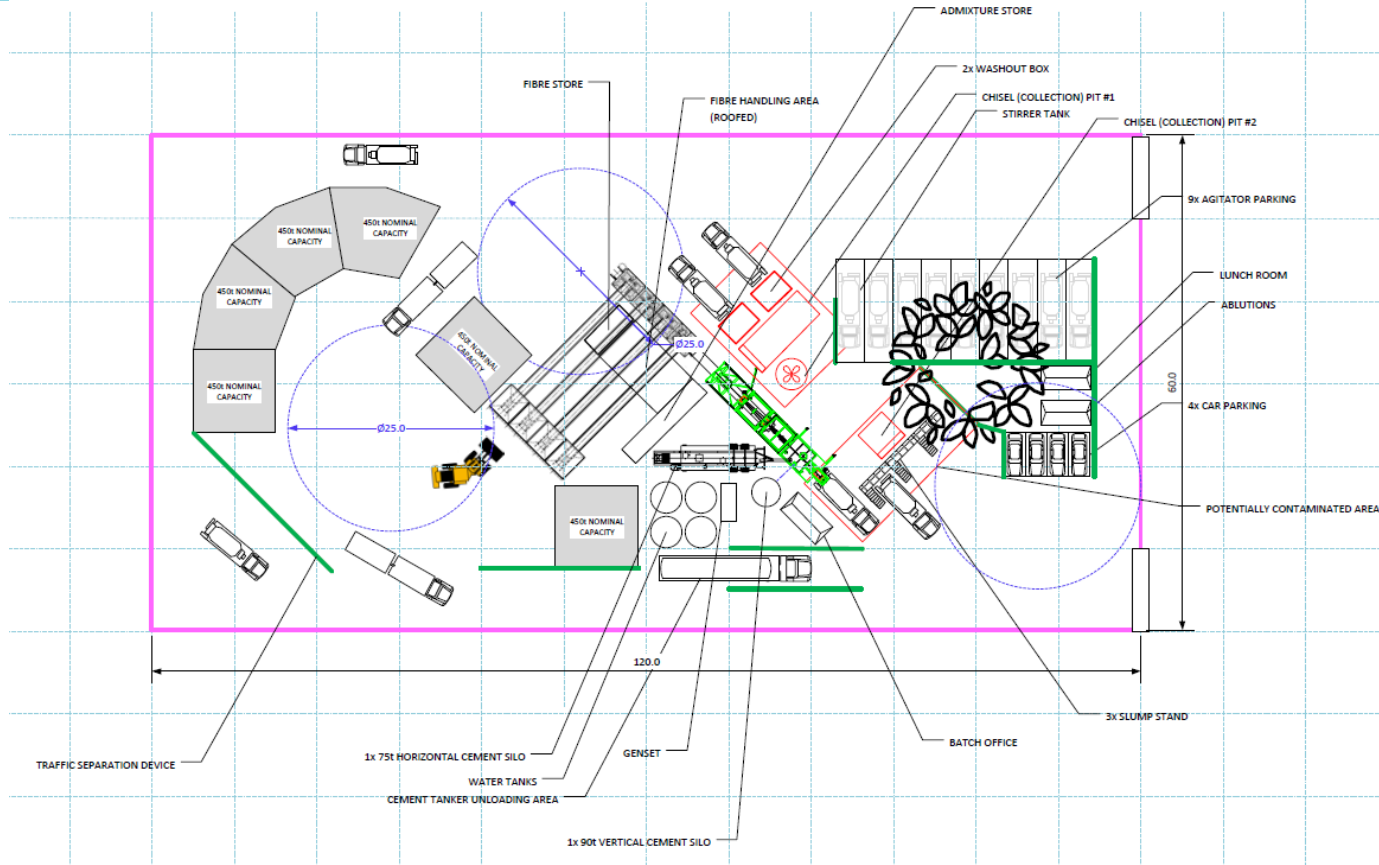
BENTONITE PLANT







CONCRETE BATCHING PLANT



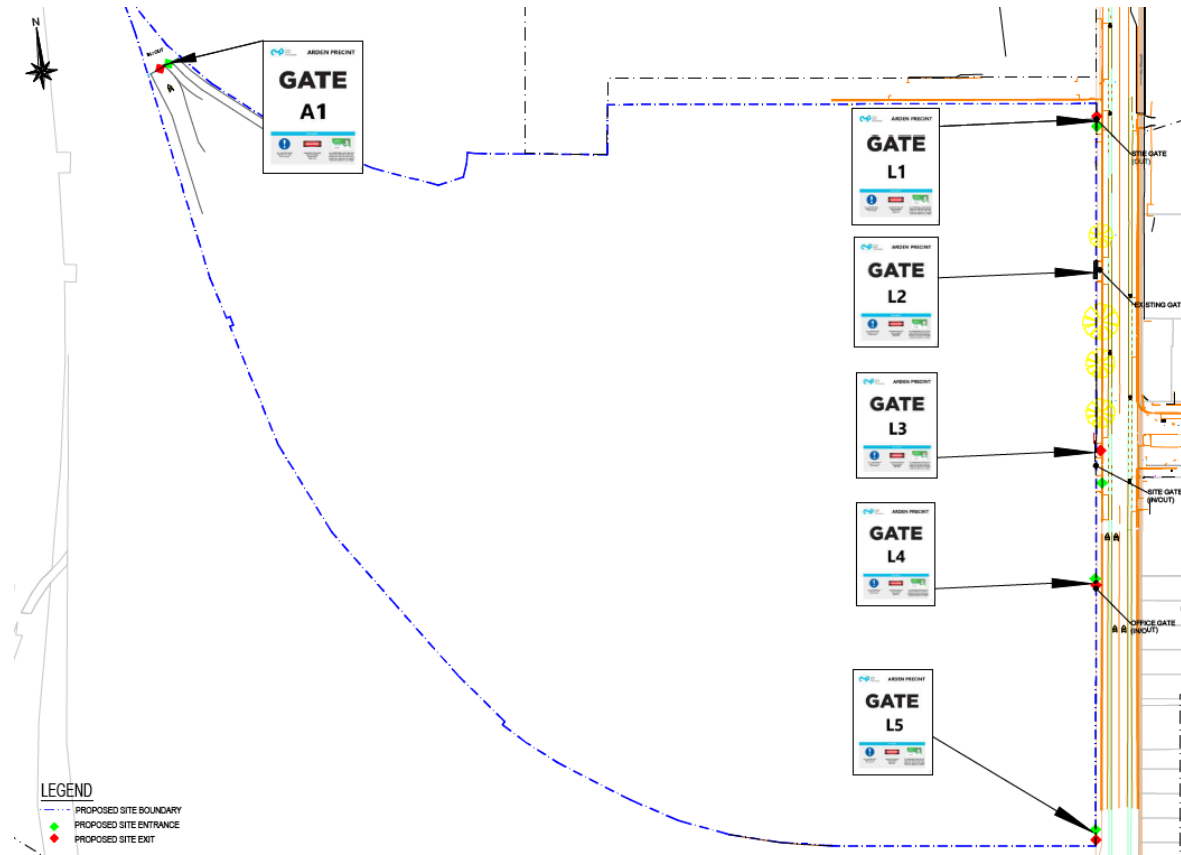


TRUCK MOVEMENTS

- Current – approx. 30 per day
 - Delivery of equipment and materials
 - Site establishment




- Increase to approx. 50 per day from mid-May
 - Piling
 - D-wall construction

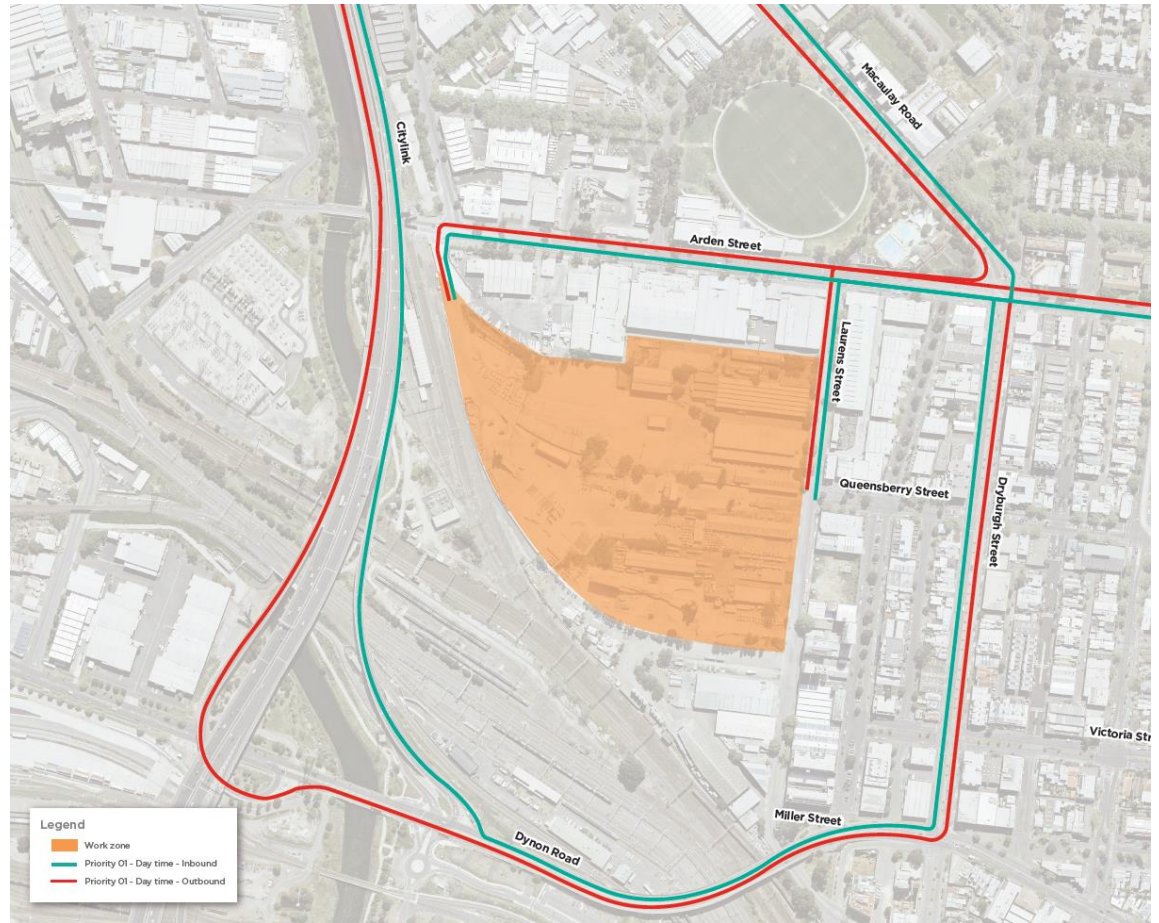
SITE ENTRANCES



HAULAGE ROUTES

Legend

-  Work zone
-  Priority 01 - Day time - Inbound
-  Priority 01 - Day time - Outbound







Western Portal Development Plan



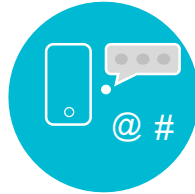
CONSULTATION SUMMARY



Advertisements
in The Age
newspaper



8,000
letter drop to
households and
businesses
(across both
portals)



Social
media
posts



9,200
e-newsletters to
“Project enews”
subscribers



Stakeholder
meetings

CONSULTATION SUMMARY



70 attendees
at 4
community
information
sessions
(across both
portals)

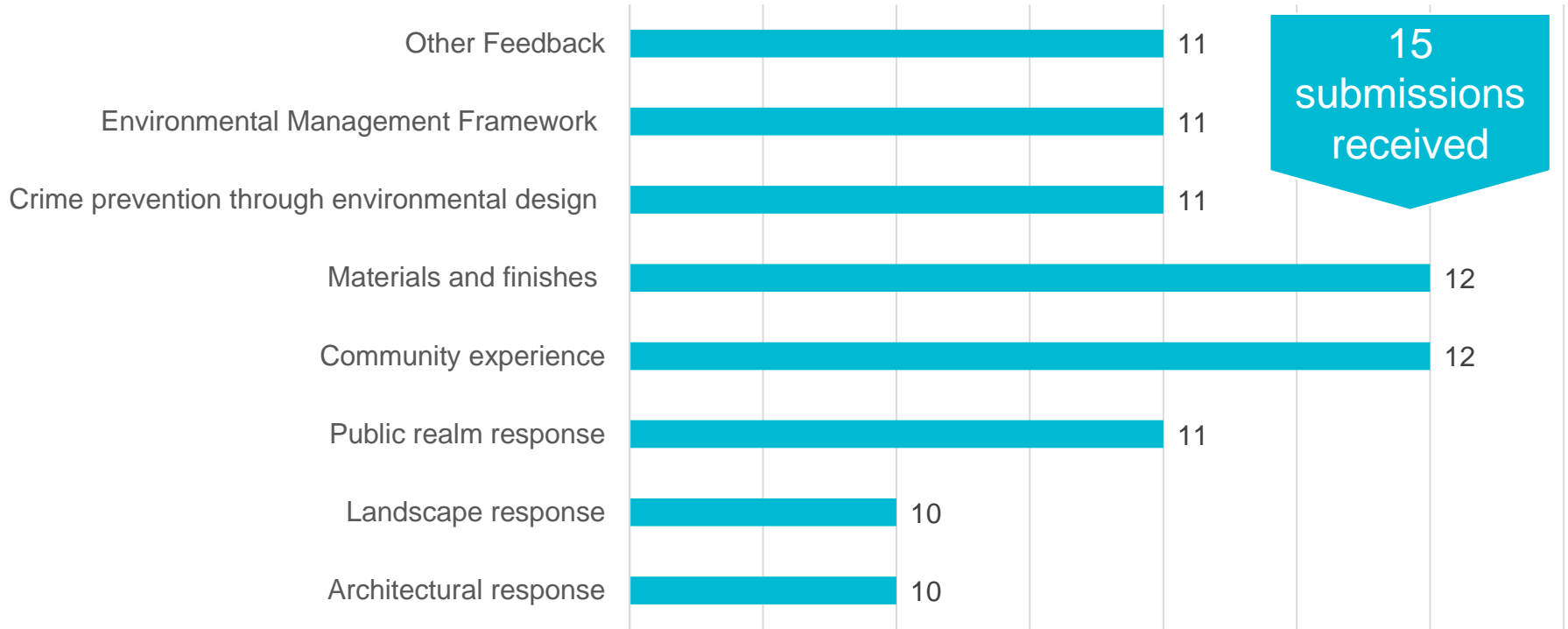


35
responses
provided
via online
submission
platform
(across
both
portals)



WHAT WE HEARD – WESTERN PORTAL

Most frequent feedback on Western Portal Development Plan



WHAT WE HEARD – WESTERN PORTAL

Key issues	Discussion
External material and finishes	Suggestions for green walls, murals and graffiti deterrent materials and finishes for the ancillary building CYP will investigate these materials and finishes as part of detailed design
RIA interface and portal precinct information	No information on RIA scope of works or broader precinct CYP acknowledge the limited scope of our built form in the precinct and will work with appointed RIA contractor to ensure design consistency
Landscape response	CYP tree impacts reduced by two (from 33 to 31 trees)
South Kensington station upgrade	Request for upgrades to South Kensington station such as ramps, universal access and better station amenity Upgrades to South Kensington station are not within CYP's scope of work

Western Portal Update



UPCOMING WORKS

- Kensington construction update notification – currently being finalised for distribution
- Demolition of 135 Ormond Street
 - Preparation works commence 14 May
 - Includes tree removal, installation of temporary site fencing, construction of a crossover to enable vehicle access from Childers Street, asbestos removal, demolition of building, removal of materials, levelling of site
 - Noise hoarding to be installed along northeastern property boundary – following completion of demolition works
- Out of hours works (rail occupations)
- Installation of site hoarding along Childers Street – July

UPCOMING RAIL OCCUPATIONS (OUT OF HOURS WORKS)

After last, before first (ALBF) works

- Sunday 10 – Friday 15 June
 - 10 pm – 7am each night
 - No disruption to train services
 - Installation of rail delineation fencing and service locating
 - Works fall under EPR NV21 as unavoidable – *relevant to all occupation works*
 - Up to two hours audible noise per night associated with sleeve driver. CYP will install temporary acoustic screens to limit impacts
 - These works will reduce the need to undertake future occupation works

Extended weekend occupations

- Friday 6 – Monday 9 July
- Friday 13 – Monday 16 July
 - 9pm Friday to first train service on Monday
 - Buses replacing trains between North Melbourne and Sunshine on the Sunbury line
 - Tree removal (day works)
 - MTM access ramp relocation (day works)
 - Sheet piling adjacent to the rail line (24/7 works)

TRAFFIC – ENGAGEMENT AND PLANNING

Engagement to date

- Early Works Plan pop-up (December 2017)
- Development and distribution of Kensington Traffic Study document (March 2018)
- Two community workshops (December 2017, March 2018)
- Ongoing conversation with Lloyd Street Business Estate
- Initiated conversations with Holy Rosary PS, Kensington PS & Kensington Community Children's Cooperative

Next steps

- Further engagement with schools & Kensington Community Children's Cooperative
- Traffic impacts notification (anticipated late-May)
- Drop-in information session (anticipated late-May/early-June)

TRAFFIC – ENGAGEMENT OUTCOMES

- Amendment of details in Early Works plan prior to submission to Minister for Planning
- Removal of Ormond Street detour option from further consideration
- Exclusion of by-pass road through the park as an option
- Addition of concrete barriers to separate proposed roundabout from pedestrians
- Ongoing work to minimise need for crane lifts that may impact travel times for LSBE over-height vehicles
- Inclusion of turnaround bay for station drop offs at western end of Childers St worksite

SITE AND TRAFFIC DESIGN (INDICATIVE)



CYP - TRAFFIC

Phase	Traffic impacts	Timing (indicative)
Pre-site establishment	Local traffic controls (traffic controllers, reduced speed limits, short-term shuttle flow arrangements); access maintained in both directions on Childers Street	May – June 2018
Site hoarding installed on Childers Street	Access maintained for through traffic on Childers Street in both directions; traffic controls and shuttle flow as required	July 2018
Closure of Childers Street between South Kensington Station and Bill Vanina Pavilion to through traffic (excl. LSBE over-height vehicles)	Station drop off maintained at western border of worksite; cyclist detour via Altona Street; pedestrian detour via footpath on northern side of Childers Street	From late July 2018
First activity requiring LSBE over-height vehicle detour	LSBE over-height vehicle detour via Derby & Tennyson Streets; cyclist detour via Altona Street;	Anticipated September/October 2018
RIA and CYP works concurrently	To be established upon RIA contract award	Late 2018 / early 2019

KENSINGTON 2018 CONSTRUCTION PROGRAM (INDICATIVE)

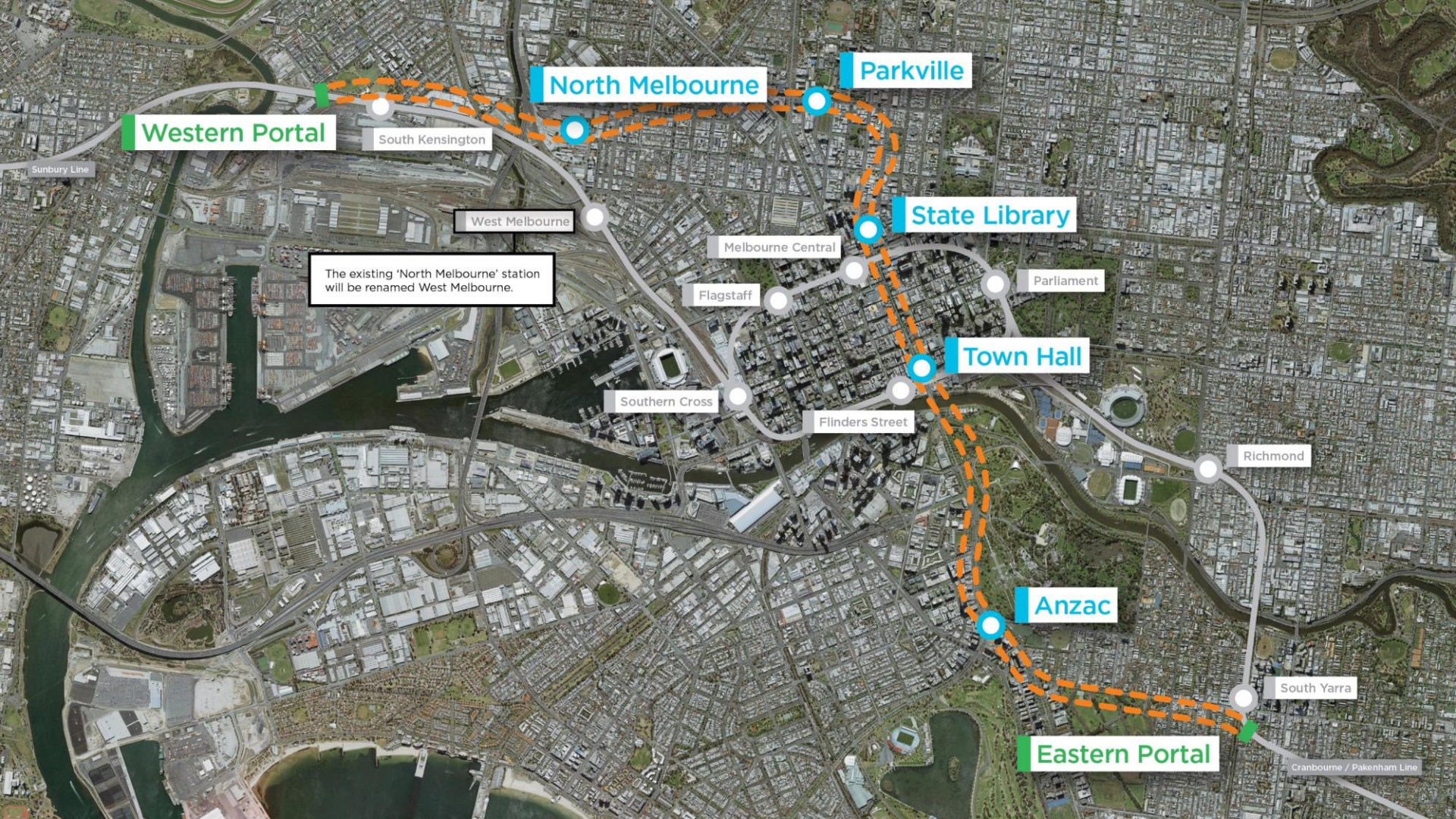
		2018											
		JAN	FEB	MAR	APR	MAY	JUN	JUL	AUG	SEP	OCT	NOV	DEC
	Install hoarding						■	■					
	Construction Site offices and amenities						■	■					
	Piling platform construction						■						
	Piling construction						■	■	■				
	Excavate and strut to base level									■	■	■	■

Questions?





DISCUSSION / OTHER BUSINESS



Western Portal

South Kensington

North Melbourne

Parkville

West Melbourne

The existing 'North Melbourne' station will be renamed West Melbourne.

Melbourne Central

Flagstaff

State Library

Parliament

Town Hall

Southern Cross

Flinders Street

Richmond

Anzac

South Yarra

Eastern Portal

Sunbury Line

Cranbourne / Pakenham Line

