



## KENSINGTON AND ARDEN COMMUNITY REFERENCE GROUP

---

21 JUNE 2018



west gate tunnel  
project

# Kensington and Arden Community Reference Group

21 June 2018



# Project objectives

- Addressing five critical transport challenges:
  - Over reliance on the West Gate Bridge
  - Inadequate transport capacity on the West Gate Freeway
  - Inadequate port and freight connections to cater for growth
  - Trucks on inner west streets
  - Mismatch between population growth and jobs growth



# Project need

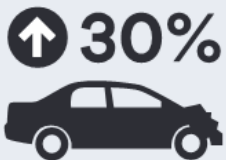
## Travel impacts by 2031



**Demand for travel**  
exceeding capacity causing  
congestion daily



**20mins**  
slower trips



**30% increase**  
crashes every year



**80% increase**  
trucks on residential streets

## Melbourne impacts



**Reduced access**  
to greater range of services  
and opportunities



**Labour force constraints**  
affecting our economic productivity

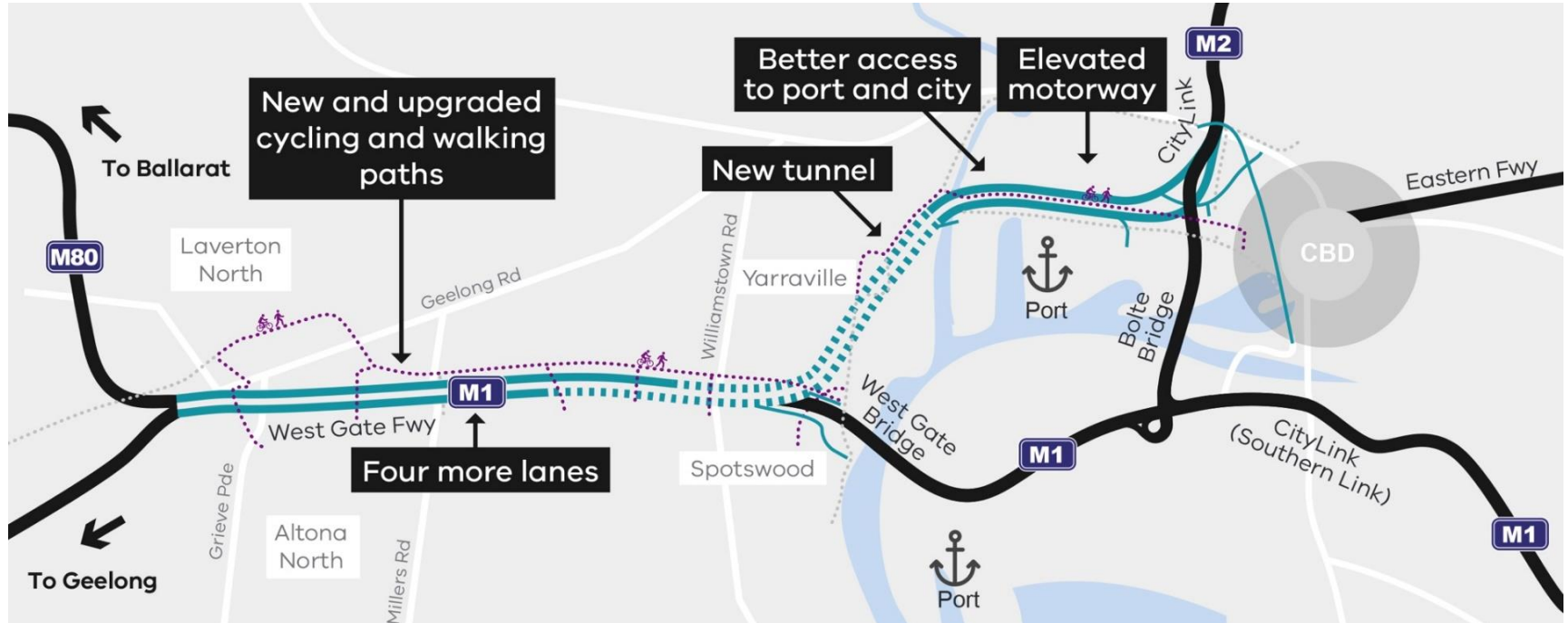


**Port restrictions**  
reducing competitiveness of  
exports



**Declining inner west  
amenity**  
impacting land values and new  
land uses

# Project snapshot

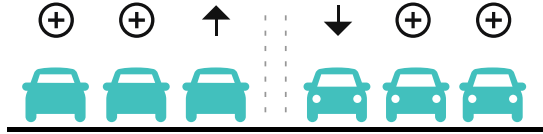


**better access from the West**  
**a quicker trip**

**safer and reliable**  
**greater flexibility**

**less congestion**  
**better connections**

# A better, safer trip



**70 kilometres of new traffic lanes**  
over 17 kilometres – from Kororoit  
Creek Road to Wurundjeri Way



**Up to 20 minutes in travel time savings**  
between the city and Melbourne's west



**Up to 13 minute faster**  
trips to the Port of  
Melbourne



**A 16 per cent reduction**  
in serious crashes



**Improved incident**  
**response systems**



# More than a road

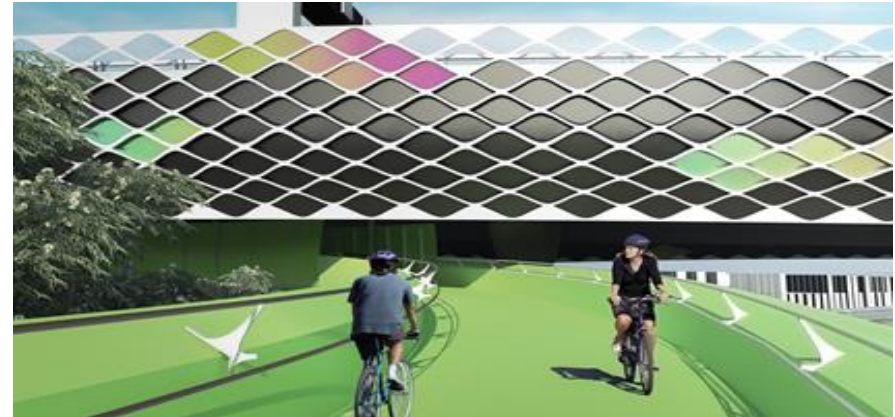


Reducing conflicts between trucks + local road users

- 14km of new + improved walking + cycling paths
- 2.5km elevated veloway



9 hectares of new open space including parks + wetlands



Better access to jobs

# Redistribution of traffic flow

If we do nothing

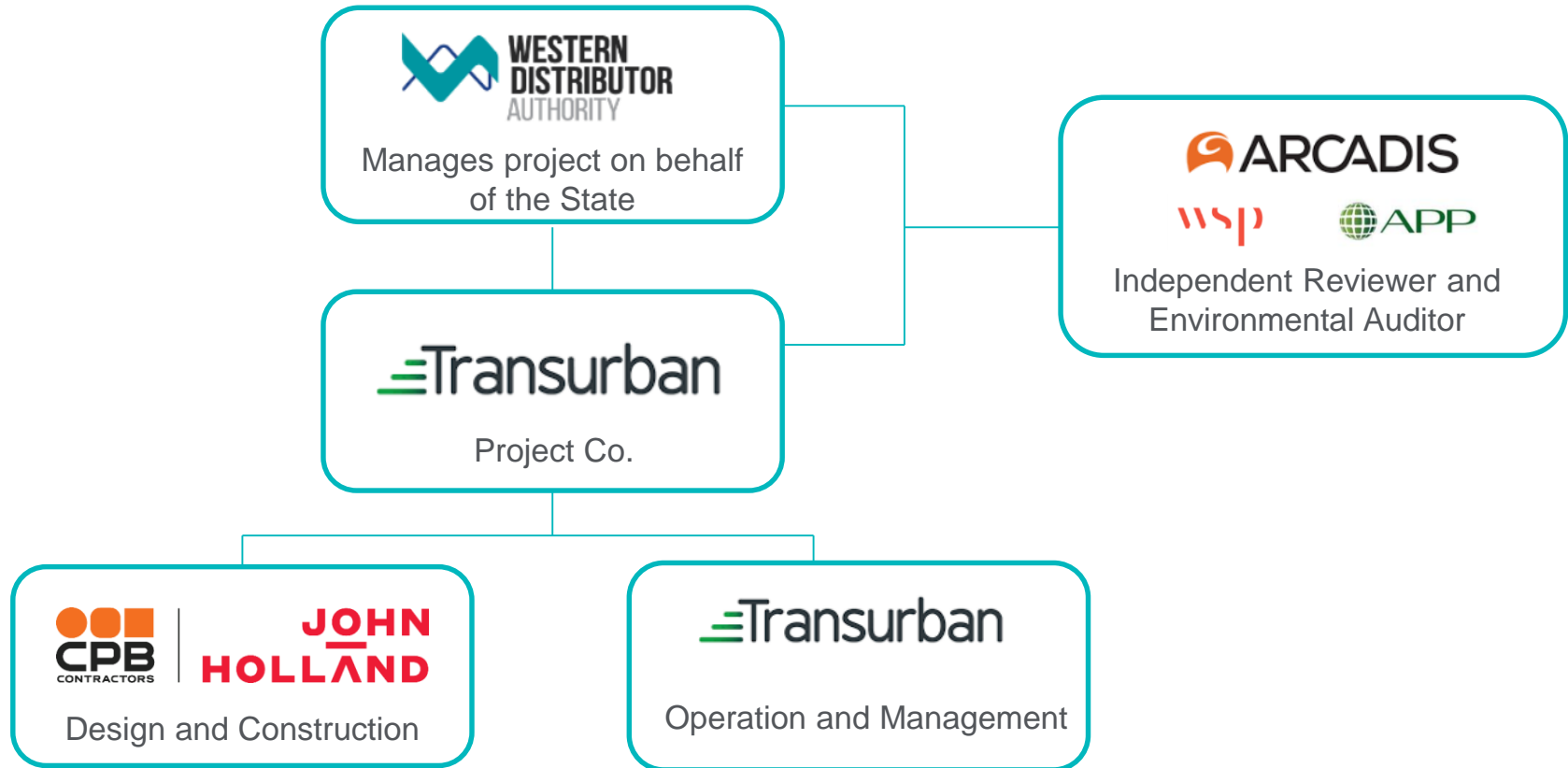


If we do something

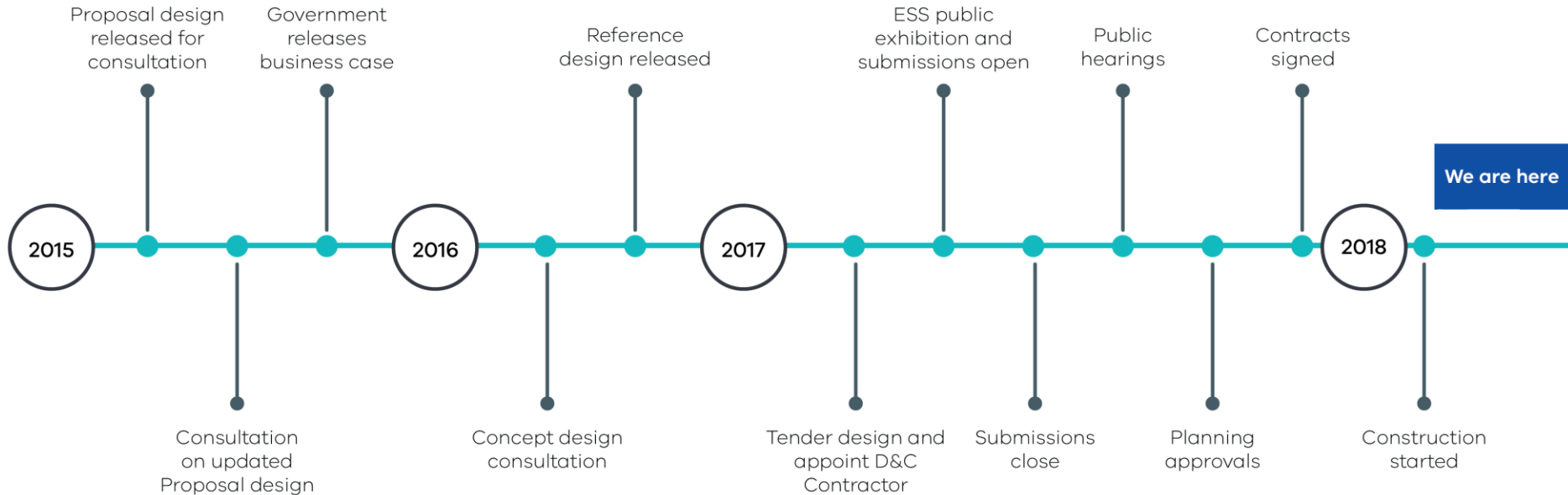




# Project partners



# Project timeline



The image features a horizontal teal gradient bar. The word "CONSTRUCTION" is written in white, bold, uppercase letters on the left side of the bar. The bar transitions from a bright teal on the left to a darker teal in the middle, and then to a lighter, almost white teal on the right.

**CONSTRUCTION**

# Environmental Performance Requirements

117 Environmental Performance Requirements (EPRs) in place

EPRs cover things like:

- construction noise
- air quality
- noise walls
- the development of a Community Involvement and Participation Plan



# Construction overview

Construction started  
early 2018

Building in three  
precincts

- West Gate Freeway
- Tunnels
- Port to City

Tunnel opens 2022

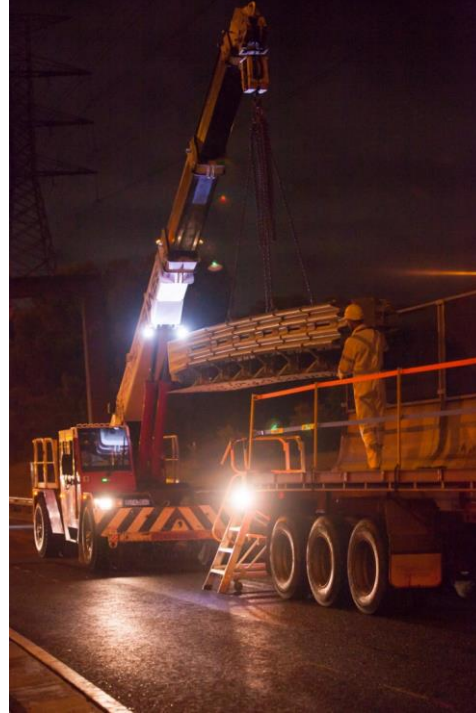




# West Gate Freeway precinct













# West Gate Freeway precinct

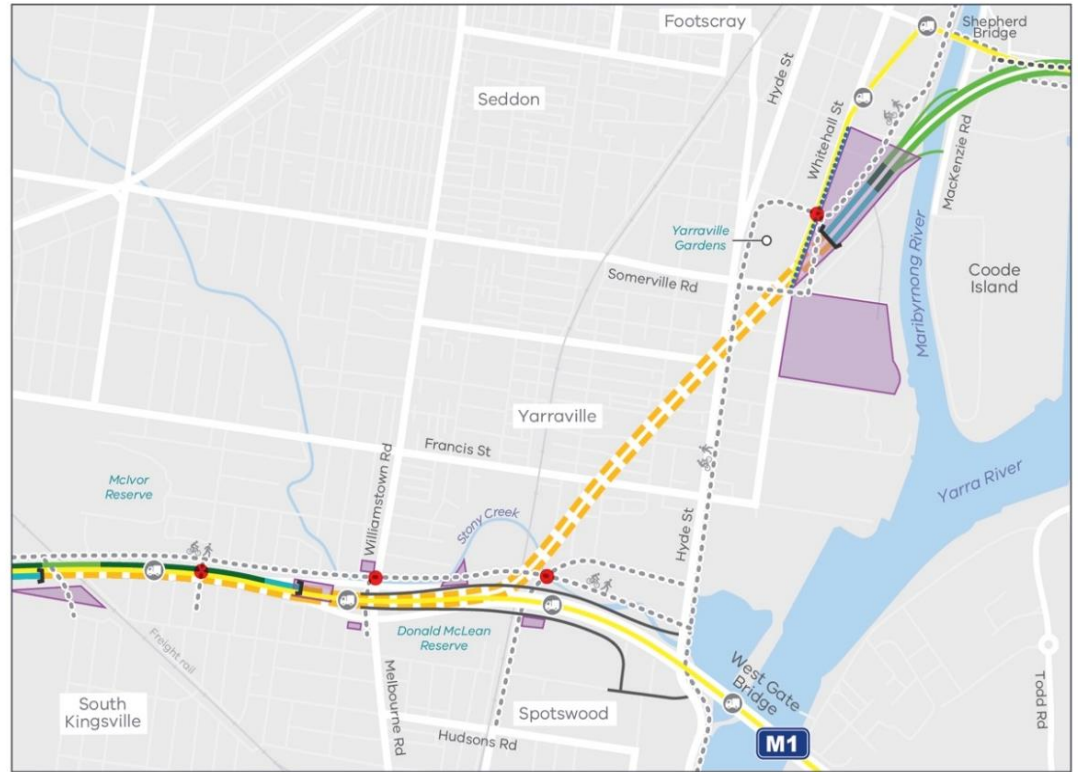


# Tunnels precinct

Stylised map not to scale

## Legend

-  Tunnels
-  Surface road
-  Elevated road and structures
-  Road cutting
-  Tunnel portal
-  Shared use paths (existing and new near West Gate Tunnel Project corridor)
-  North Yarra Main Sewer works
-  Truck haulage route
-  Construction compound
-  New cycling and walking bridges













# Tunnels precinct



# Port to City precinct

Stylised map not to scale

## Legend

-  Elevated road and structures
-  Tunnel portal
-  Wurundjeri Way widening
-  Shared use paths (existing and new near West Gate Tunnel Project corridor)
-  Veloway
-  Construction compounds
-  Maribyrnong River bridges
-  New cycling and walking bridges



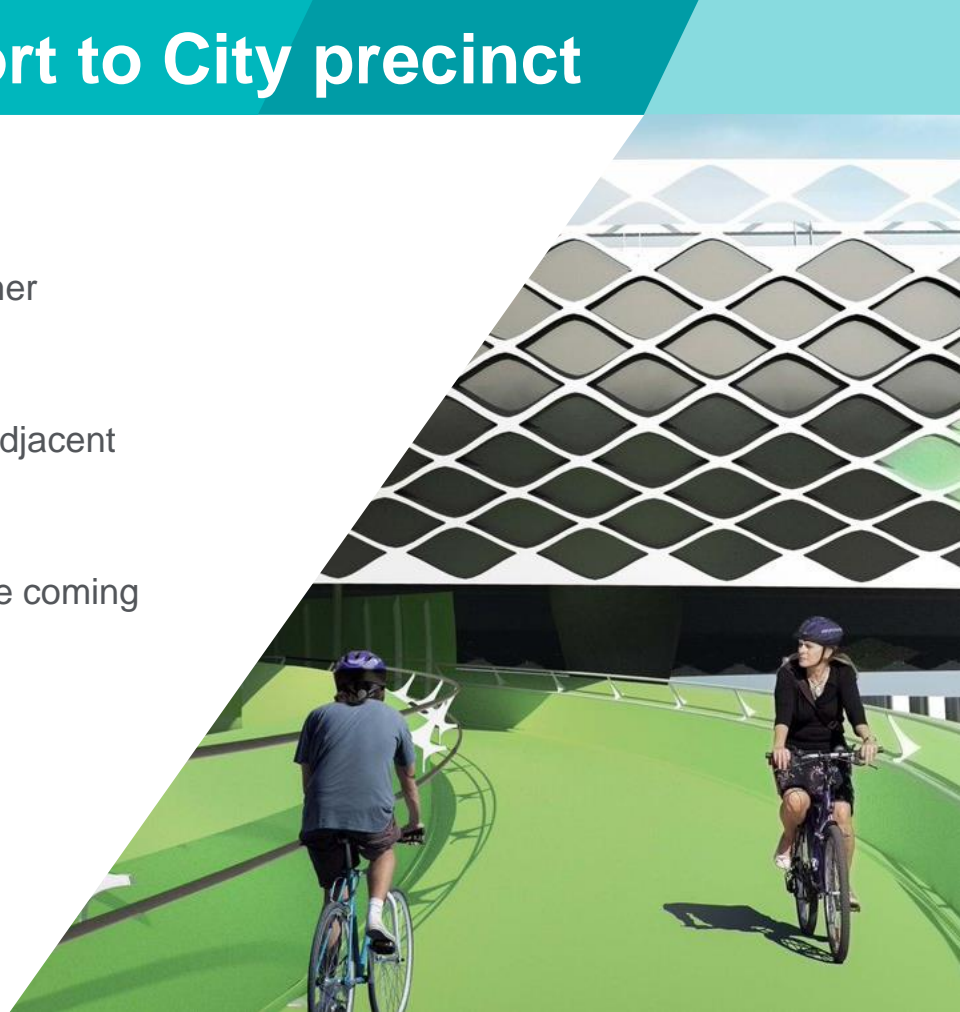


# Port to City precinct



# Upcoming works in the Port to City precinct

- Demolition and site establishment works at the former Melbourne Market site
- Pontoon and crane pad installation works on, and adjacent to, the Maribyrnong River
- Traffic barriers installed along Footscray Road in the coming months



The image features a horizontal band with a teal background. On the right side of this band, there are two overlapping geometric shapes: a dark teal triangle pointing left and a light blue triangle pointing right. The word "COMMUNITY" is written in white, bold, uppercase letters on the left side of the teal band.

**COMMUNITY**

# Employment and learning opportunities

## Employment and learning opportunities

- Over 500 jobs for apprentices, trainees and graduates.
- 400 jobs dedicated to people from the west.
- Up to 150 jobs set aside for former auto workers.
- Targeted recruitment of disadvantaged groups and ongoing workplace support during their employment.
- CPBJH partnership with Victoria University Polytechnic



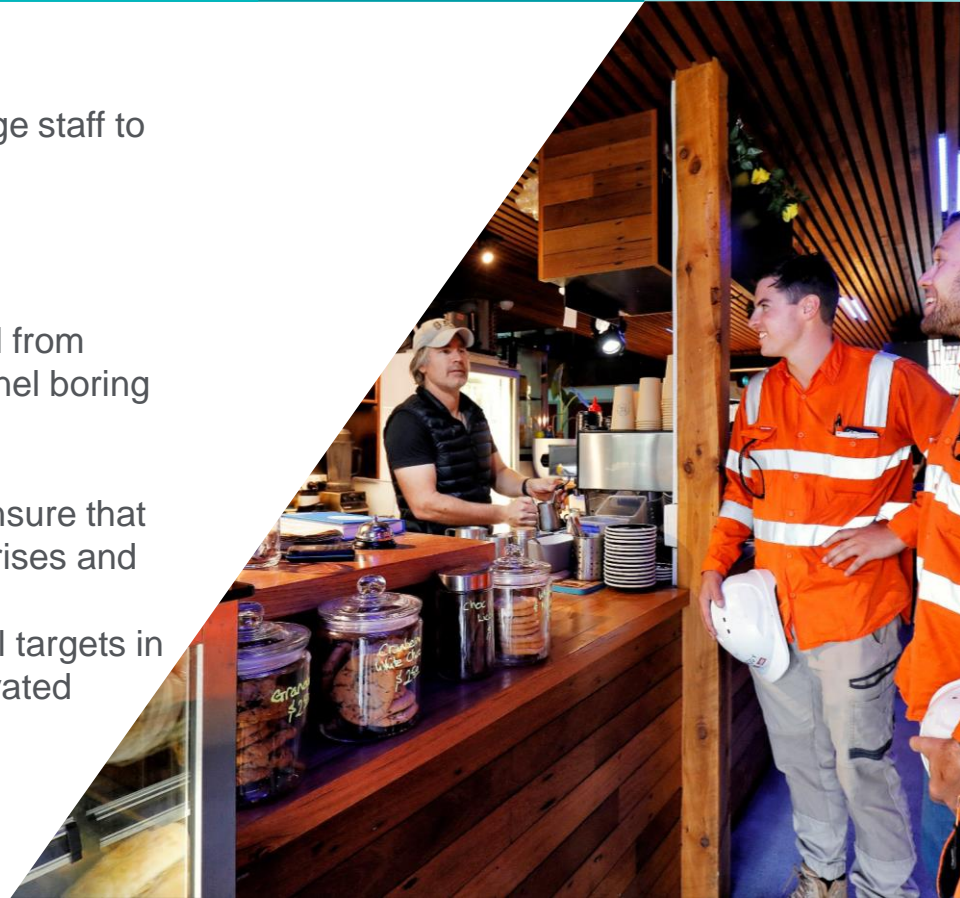


# Local business opportunities

Workforce trader directory being launched to encourage staff to 'buy local'

Buying Australian goods and services:

- 93 percent of goods and services will be purchased from Australia/NZ suppliers, except for the specialist tunnel boring equipment
- 92 percent of steel used milled in Australia/NZ.
- A strategy will be developed and implemented to ensure that goods and services are sourced from social enterprises and Aboriginal businesses.
- Our Local Industry Development Plan will set out all targets in design and construction of tunnels, roadworks, elevated structures and lane use management systems.





# Stay in touch



Info Centre @ corner Whitehall Street and  
Somerville Road, Yarraville



@westgatetunnel



facebook.com/westgatetunnelproject



westgatetunnelproject.vic.gov.au



1800 105 105



westgatetunnelproject@wda.vic.gov.au



west gate tunnel  
project

QUESTIONS?





# RAIL INFRASTRUCTURE ALLIANCE (RIA)

# RIA: WESTERN TUNNEL ENTRANCE

## Stage two of western tunnel entrance construction to be delivered by RIA:

- Cut-and-cover tunnel
  - Decline structure
  - Retaining wall
  - Track work to tie in the new tunnel with the existing rail line
- 
- Ahead of major works, a range of early works are required by the RIA contractor to prepare the area for construction
  - Early works scheduled to commence in **September 2018**, subject to RIA contract award and approval of early works plan, and be completed by mid-2019



# RIA: PROCUREMENT UPDATE

- Preferred RIA contractor on board in the coming weeks:
  - RPV and preferred RIA contractor work together to finalise elements of the contract
  - Opportunities for community engagement
- Contract award in third quarter 2018



# RIA: EARLY WORKS PLAN

## Have your say:

- Draft RIA Early Works Plan available for public inspection and comment from **Monday 16 July to Friday 3 August 2018**
- Local drop-in information sessions during public display period
- Online submission form at **[metrotunnel.vic.gov.au/planning](http://metrotunnel.vic.gov.au/planning)**
- Feedback received on the draft plan will be considered as part of its finalisation
- Updated plan provided to Minister for Planning for approval



# PROPOSED RIA EARLY WORKS SCOPE

- Installation of site hoardings
- Earthworks
- Piling and foundation works
- Site offices, project staff parking and laydown area
- Long-term temporary public car park
- Utility relocation and protection
- Tree and vegetation removal
- Local traffic changes
- Temporary bentonite storage tanks



# PROPOSED RIA EARLY WORKS SCOPE: CHANGES TO ROAD NETWORK

- Childers Street closed to local through traffic (except over-height vehicles from the Lloyd Street Business Estate, and Childers Street and Tennyson Street residents) until late 2022
- Modifications to the Kensington Road / Childers Street / Hobsons Road intersection to maintain safe pedestrian access to and from the temporary car park on Hobsons Road

# PROPOSED RIA EARLY WORKS AREA



 Indicative RIA site areas



# BENTONITE STORAGE TANKS





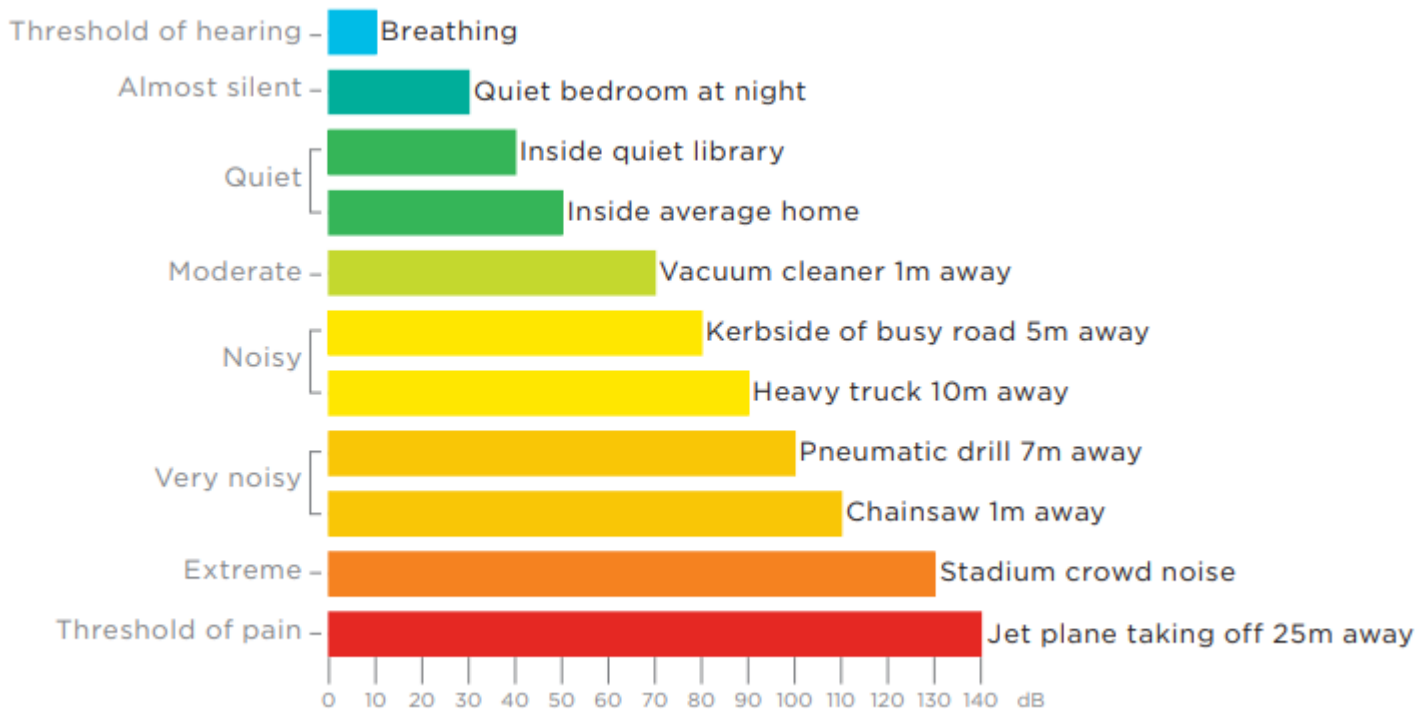
# RESIDENTIAL & BUSINESS SUPPORT



# MANAGING POTENTIAL IMPACTS ON RESIDENTS

- Undertake works during day time whenever possible
- Use all possible on-site mitigation measures to control noise / vibration etc at the source of the impact
- Provide respite and relocation options outlined in the Residential Impact Mitigation Guidelines for Construction

# INDICATIVE NOISE LEVELS





# ALTERNATIVE ACCOMMODATION

## Noise level:

- Noise exceeds either 65dB(A) in total, or 10dB(A) above ambient level (whichever is higher)

## Time and duration:

- Experienced between 10pm and 7am on any day of the week
- Occurs on at least **10 days in any 15 consecutive days** or **40 days in any six consecutive months**



# CONTRACTOR APPROACH

## Proactive:

- Program determines where respite and relocation to be offered
- Contractor notifies residents of offer of respite / relocation

## Reactive:

- During works, contact contractor via Project Information Line 1800 105 105 (24/7)

# NOISE AND VIBRATION

## **Process:**

- Modelling
- Construction noise and vibration impact assessment (CNVIA)
- Monitoring
- Mitigation

## **CNVIA:**

- Prepared for each phase of the works
- Assessment of airborne and ground-borne noise and vibration impacts
- Governs management of noise and vibration across project
- Identifies construction activities and equipment requiring mitigation
- Informs potentially affected stakeholders – supports identification of proposed mitigation measures
- Communications strategies

# NOISE AND VIBRATION

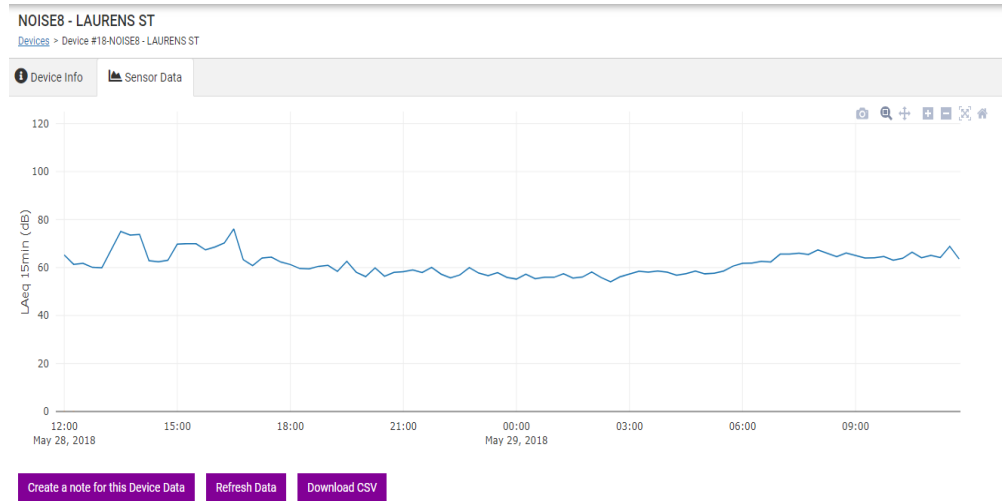
## Modelling:

- Qualified acoustic consultants model predicted impacts
- Informs appropriate mitigation strategies
- Various modelling scenarios – 3D computer acoustic model
  - Sensitive receivers and proximity
  - Building structures
  - Topography
  - Noise sources
  - Construction schedule

# NOISE AND VIBRATION

## Monitoring:

- Background ambient
- Modelling validation
- Unattended:
  - Key sensitive locations
  - Real-time to ensure construction noise levels align with modelling
  - Alerts if construction activities approach prescribed noise levels

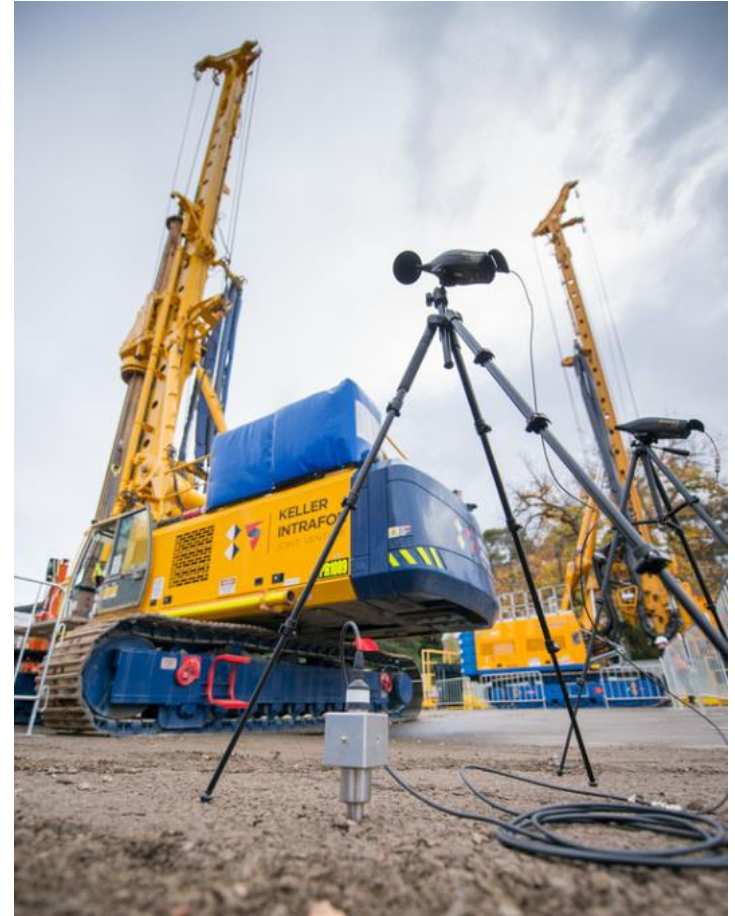




# NOISE AND VIBRATION

## Monitoring:

- Attended:
  - Check change to construction methodology
  - Subjective information to refine construction methods
  - Differentiate between construction noise sources and other sources such as road traffic
- Ongoing during works:
  - Regularly review data
  - Determine if further mitigation required



# NOISE AND VIBRATION

## Impact Mitigation:

Mitigation Method	Details
<b>Management Controls:</b>	<ul style="list-style-type: none"><li>• Works notifications</li><li>• Working Hours</li><li>• Out of hours works process</li><li>• Site inductions and training</li></ul>
<b>Source Mitigation:</b>	<ul style="list-style-type: none"><li>• Equipment selection</li><li>• Coordination of plant operation</li><li>• Traffic management and planning</li><li>• Non-tonal reversal alarms (broadband beepers)</li></ul>
<b>Path Mitigation:</b>	<ul style="list-style-type: none"><li>• Shield sensitive receivers</li><li>• Shield stationary plant and equipment</li></ul>



# SUPPORTING BUSINESSES – DEDICATED RESOURCES

## **RPV Landowner and Business Support Services**

- ✓ Barry McGuren, Manager
- ✓ Advisor (in recruitment)

## **Cross Yarra Partnership**

- ✓ Kate Kearns, Business Engagement Lead
- ✓ Luis Narvaez, Senior Advisor
- ✓ Senior Advisor (in recruitment)
- ✓ Fletcher Pegus, Support Officer



# BUSINESS SUPPORT MEASURES

- ✓ Marketing and promotion (vouchers etc)
- ✓ Wayfinding and signage
- ✓ Leveraging existing events
- ✓ Creating local activation opportunities
- ✓ Using construction infrastructure to create focal points
- ✓ Upskilling businesses – promote resilience
- ✓ Regular, ongoing communications
- ✓ Precinct and individual business action plans



# KEY LOCAL ISSUES

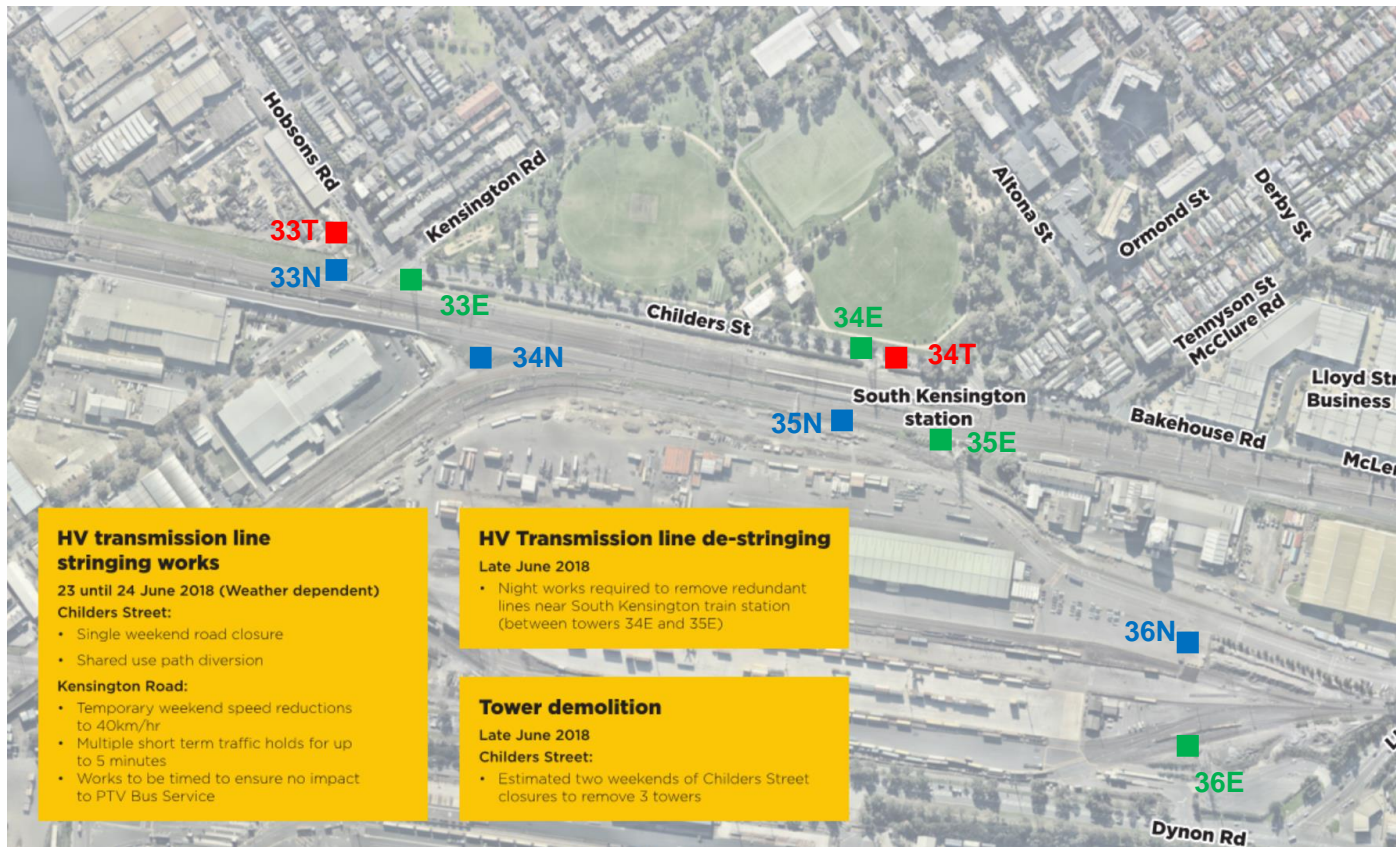
- ✓ Access
- ✓ Amenity
- ✓ Visibility
- ✓ Wayfinding and signage
- ✓ Regular, ongoing communications





# JOHN HOLLAND UPDATE

# UPCOMING WORKS– JUNE & JULY



**HV transmission line stringing works**  
 23 until 24 June 2018 (Weather dependent)  
**Childers Street:**

- Single weekend road closure
- Shared use path diversion

**Kensington Road:**

- Temporary weekend speed reductions to 40km/hr
- Multiple short term traffic holds for up to 5 minutes
- Works to be timed to ensure no impact to PTV Bus Service

**HV Transmission line de-stringing**  
 Late June 2018

- Night works required to remove redundant lines near South Kensington train station (between towers 34E and 35E)

**Tower demolition**  
 Late June 2018  
**Childers Street:**

- Estimated two weekends of Childers Street closures to remove 3 towers

# WORKS COMPLETED TO DATE



# WORKS COMPLETED TO DATE





# CROSS YARRA PARTNERSHIP UPDATE





# NORTH MELBOURNE STATION DESIGN

**NORTH MELBOURNE – LAURENS STREET  
ENTRANCE**



- NORTH MELBOURNE - CONCOURSE



CONCEPT IMAGE



## NORTH MELBOURNE - PLATFORM



CONCEPT IMAGE

# ARDEN (NORTH MELBOURNE) PRECINCT UPDATE



# ARDEN PRECINCT

## Work to date

- Construction of piling pads (complete)
- Construction and commissioning of temporary bentonite plant
- Connection of temporary electrical substation to site facilities & bentonite plant
- Commencement of diaphragm wall (D-wall) construction (ongoing)
- Concreting of internal haulage routes (ongoing)
- Modifications to entrance gates and hoarding (ongoing)



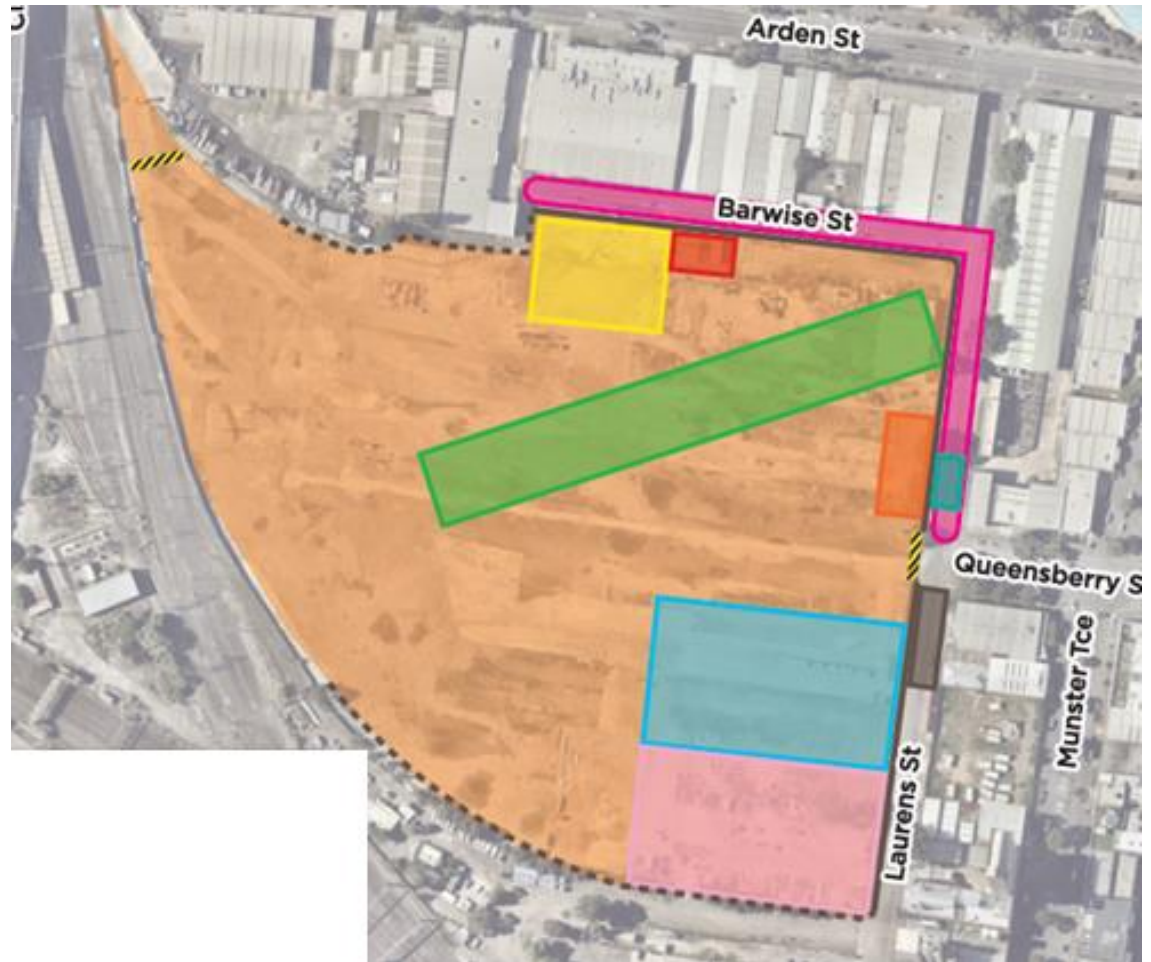


# THREE MONTH LOOKAHEAD

- Diaphragm wall (D-wall) construction - ongoing
- Concreting of internal haulage routes - ongoing
- Modifications to entrance gates and hoarding - ongoing
- Installation of site amenities - ongoing
- Trimming of one tree on Laurens Street
- Commencement of piling – expected late June
- Surveying

### Legend

- Work site
- Site gate
- Bentonite plant
- Temporary electrical substation
- CBD construction support
- Piling platform & diaphragm wall construction
- Installation of site facilities
- Temporary site laydown area
- Tree trimming
- Surveying area
- Pedestrian detours
- Existing hoarding
- Hoarding installation



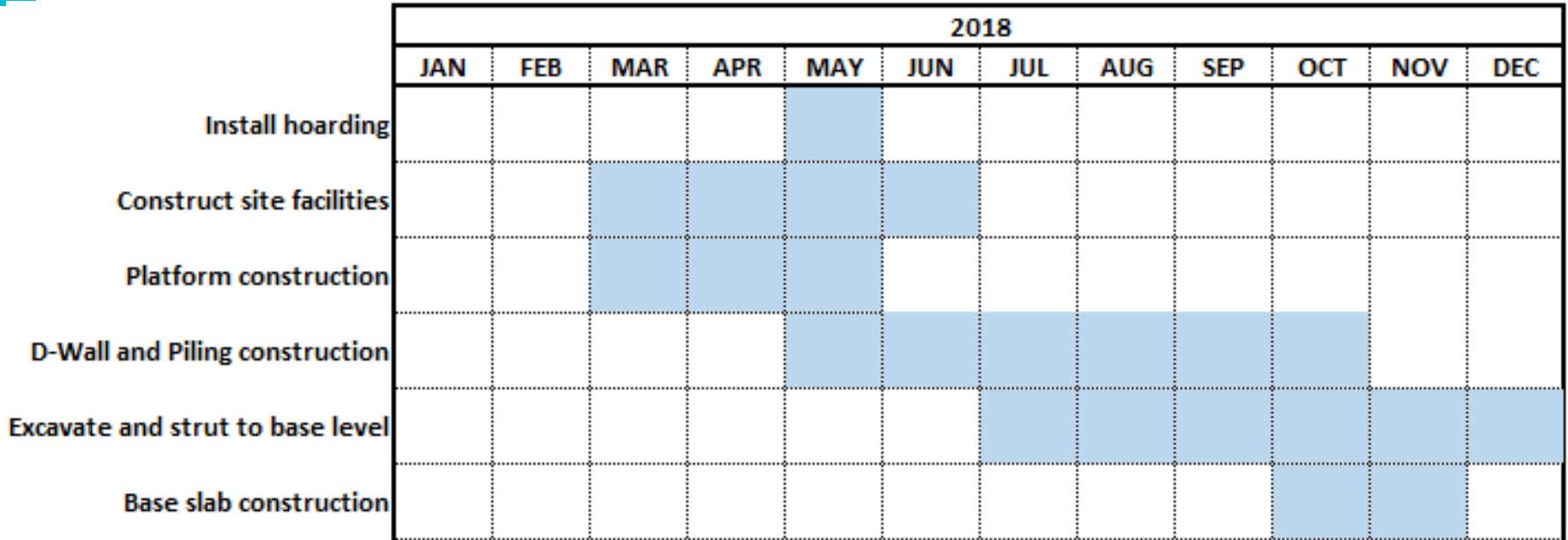
# GUIDE WALL CONSTRUCTION



# D-WALL CONSTRUCTION



# 2018 CONSTRUCTION PROGRAM





# **KENSINGTON (WESTERN PORTAL) PRECINCT UPDATE**





# KENSINGTON (WESTERN PORTAL) PRECINCT

Demolition of 135 Ormond – completed 6 June

- Removal of four trees – completed 31 May
- Sorting and removal of materials to be recycled/disposed of – completed 8 June
- Next steps
  - Soil sampling
  - Minor earthworks
  - Installation of acoustic hoarding

# DEMOLITION WORKS



# UPCOMING WORKS

## Planned rail disruptions (24/7 works)

- 6 – 9 and 13 – 16 July
- Installation of rail delineation safety fencing and site hoarding
- Tree removal on southern side of Childers Street (including gum tree near South Ken station)
- Sheet piling
- Construction of a rail corridor access ramp at western side of work area

## Anticipated impacts

- High levels of noise expected at night due to piling activities
- Noise monitoring will be in place through the works
- Access along Childers Street will be maintained at all times



# UPCOMING WORKS

## Closure of Childers Street

- Following completion of HV tower works and rail events
- Anticipated late July 2018
- First construction activity requiring use of Derby/Tennyson Street Detour – expected October 2018



# THREE MONTH LOOKAHEAD

- Soil sampling at 135 Ormond St
- Groundwater monitoring well installations and testing
- Works to construct temporary roundabout
- Modifications to road network for business estate over-height vehicle detour
- Site fencing
- Construction of piling work areas
- Secant piling
- Earthworks
- Underground service protection / modifications

# 2018 CONSTRUCTION PROGRAM

		2018						
		JUN	JUL	AUG	SEP	OCT	NOV	DEC
	Install hoarding		■	■				
	Construct site offices and amenities		■	■				
	Piling platform construction		■					
	Piling construction		■	■	■		■	■
	Gas main works					■		





# UPCOMING ENGAGEMENT

Upcoming opportunities to engage with the project team:

## **Pop-up stand** (subject to weather)

Date: Sunday 24 June 2018

Time: 10am – 1pm

Location: JJ Holland Park, Kensington

## **Drop-in information session**

Date: Thursday 28 June 2018

Time: 5pm – 8pm

Location: Bill Vanina Pavilion, JJ Holland Park, Kensington



**QUESTIONS?**

# Metro Trains – Upcoming rail disruptions

Clare Robertson  
Senior Communications and Stakeholder Relations Manager  
Metro Tunnel Project

21 June 2018

Commercial in confidence

# Overview

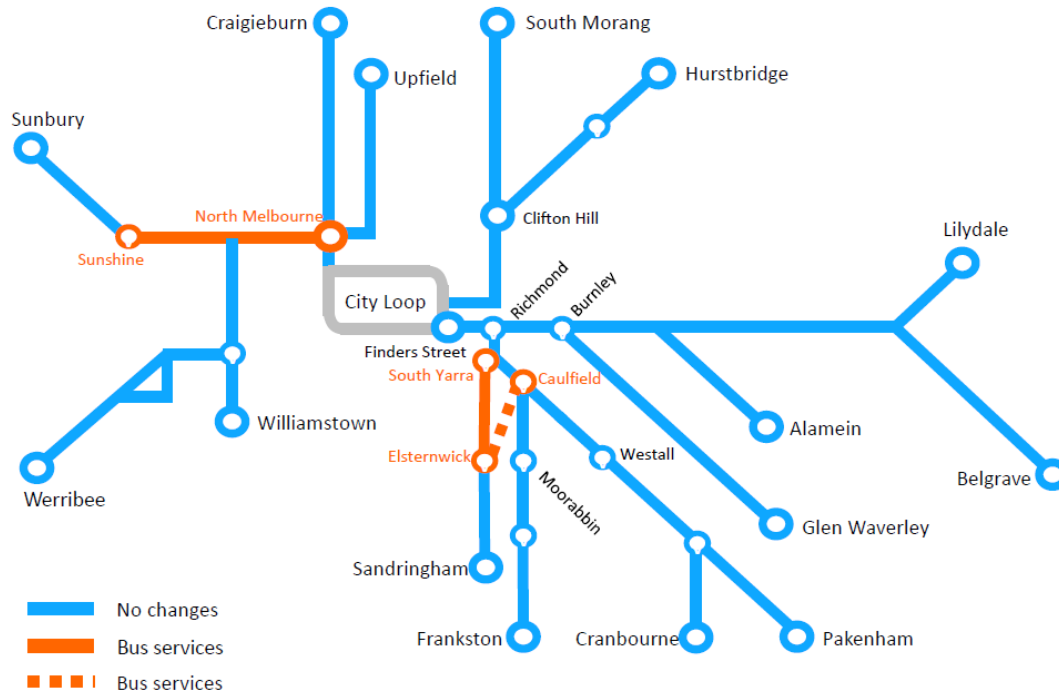
Critical works for the Metro Tunnel Project will be carried out at the locations of the tunnel entrances in Kensington and South Yarra over two weekends in July.

These are the first rail disruptions to be carried out as part of the Metro Tunnel Project.

We recommend passengers allow 30 minutes extra for their travel journey.

	Dates	Buses will replace trains between
<b>Sunbury line</b>	• 8.30pm Fri 6 July to last service Sun 8 July	North Melbourne Station to Sunshine Station
	• 8.30pm Fri 13 July to last service Sun 15 July	
<b>Sandringham line</b>	• 8.30pm Fri 6 July to last service Sun 8 July	South Yarra Station to Elsternwick Station
	• 8.30pm Fri 13 July to last service Sun 15 July	

# Running train replacement bus services



# Communications and engagement

Key communications and engagement activities for these early start weekend occupations include:

- Posters at stations, including timetable posters and decals
- Metro Travel Update advertisements in metropolitan papers
- Brochures
- Surprise and delight – fruit, giveaways, water, local trade produce etc. during disruption
- Station and on-board announcements
- Windscreen flyers (where station car parks are affected)
- Stakeholder emails / face-to-face engagement
- Online and social media content
- Resident and trader notifications where on-street parking is impacted.





## Likely impacts around North Melbourne Station

To safely run train replacement bus services, North Melbourne residents may notice:

- Temporary closures of on-street car parking (including 11 bays on Railway Parade in North Melbourne)
- Low-level noise generated from buses and pedestrian traffic
- Use of portable microphones (i.e. PAs), lighting towers and temporary power generators
- Some traffic management to guide local drivers and buses around the station precinct, and support passenger safety at drop-off and pick-up areas.





# DISCUSSION / OTHER BUSINESS





**Western Portal**

South Kensington

**North Melbourne**

**Parkville**

West Melbourne

The existing 'North Melbourne' station will be renamed West Melbourne.

Melbourne Central

Flagstaff

**State Library**

Parliament

**Town Hall**

Southern Cross

Flinders Street

Richmond

**Anzac**

South Yarra

**Eastern Portal**

Cranbourne / Pakenham Line

Sunbury Line