



CBD PRECINCT COMMUNITY REFERENCE GROUP

MEETING 11

Friday 6 July 2018



Construction partner:



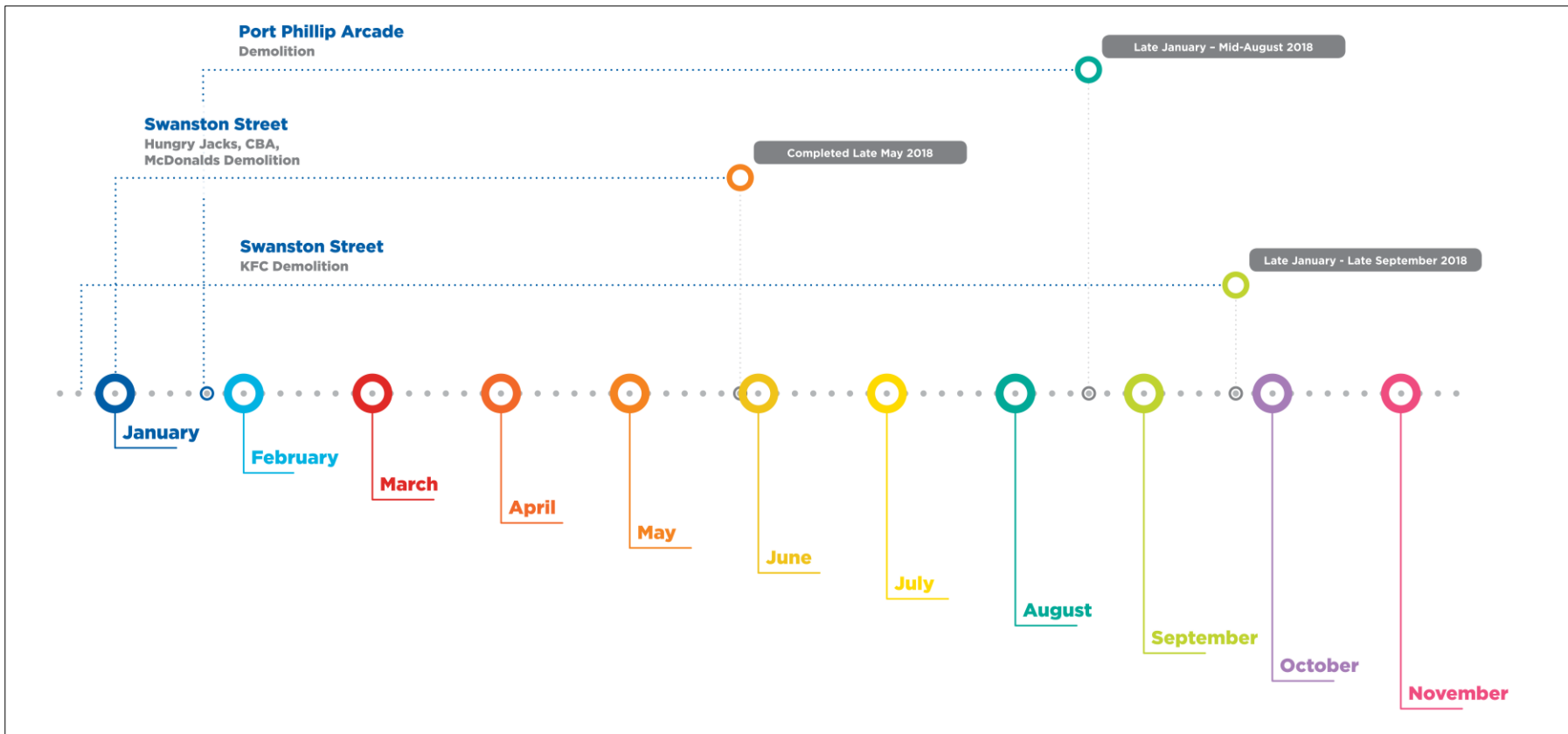


JOHN HOLLAND EARLY WORKS PROGRAM UPDATE



METRO TUNNEL EARLY WORKS TOWN HALL STATION UPDATE

TOWN HALL STATION TIMELINE – EARLY WORKS



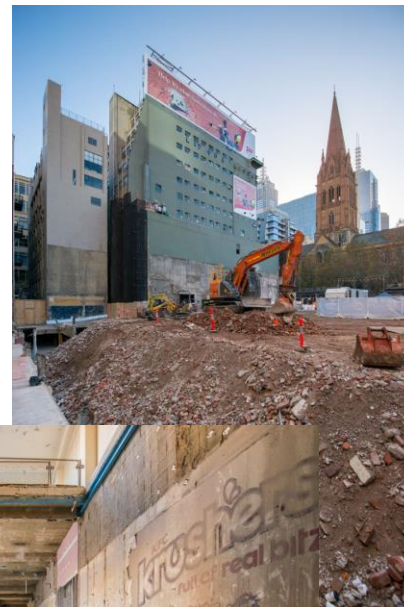
KFC DEMOLITION & NICHOLAS BUILDING WORKS

KFC Demolition

- Preparatory works towards building demolition – **late-September**

Nicholas Building works

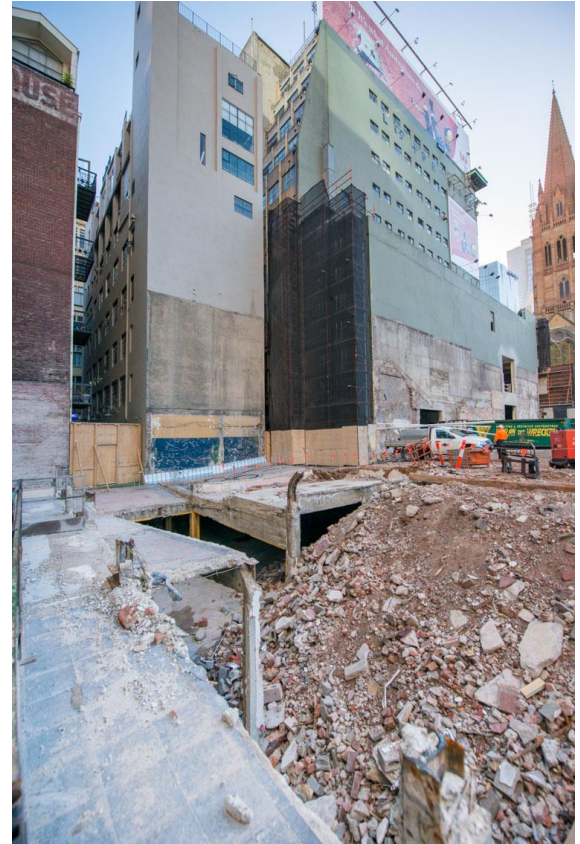
- Continuing with internal works - emergency stairwell installation – **mid-July**





PORT PHILLIP ARCADE DEMOLITION

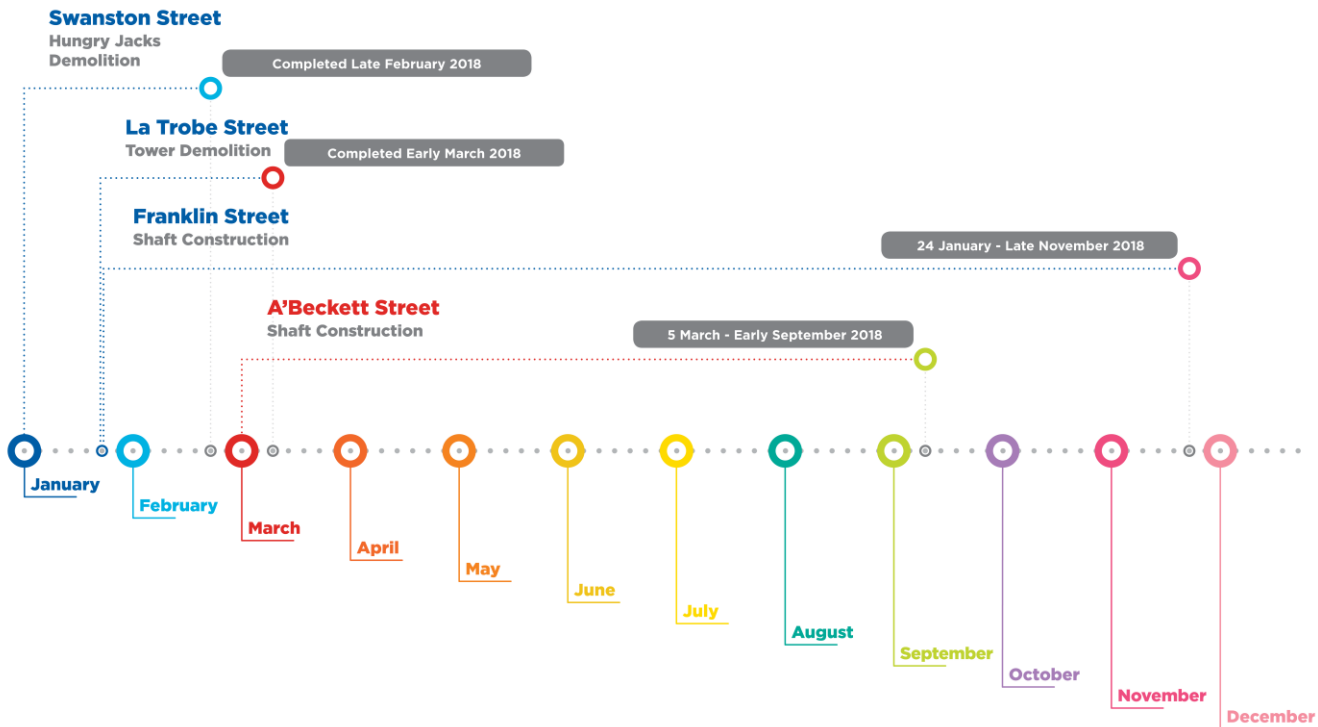
- Revision of methodology for demolition of PPA Flinders Street frontage – **current**





METRO TUNNEL EARLY WORKS STATE LIBRARY STATION UPDATE

STATE LIBRARY STATION TIMELINE – EARLY WORKS



FRANKLIN STREET & A'BECKETT STREET SHAFT UPDATE

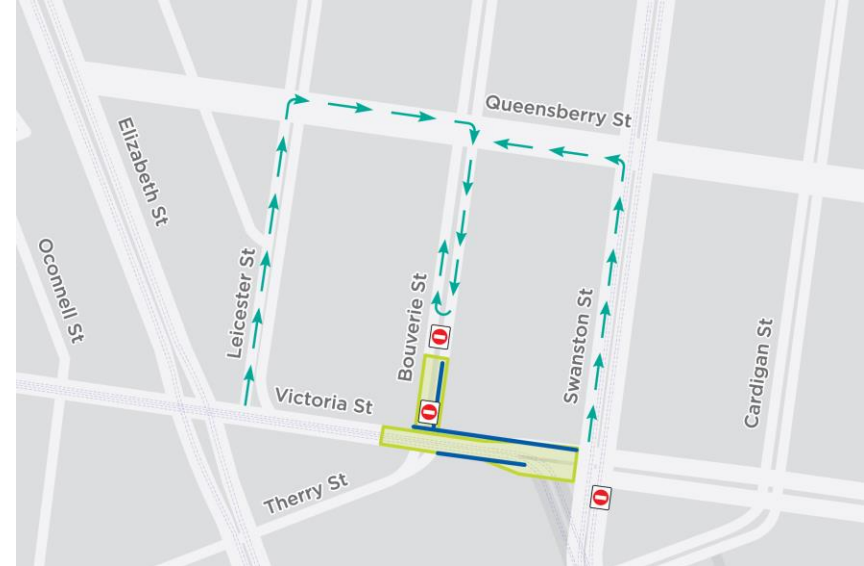
- 24 hour works are now underway at both shaft sites within the acoustic sheds
- Deliveries of props, beams and materials 24 hours a day being prioritised to occur in early evenings from remote locations
- Doors to be closed for all night works





GROUNDWATER MONITORING UPDATE

- Boreholes - complete
- Relocation of water mains to install connecting pipes for boreholes – underway
- Civil works to connect boreholes to complete recharge system – commencing 8 July 2018
- Testing and commissioning – not started





CROSS YARRA PARTNERSHIP UPDATE

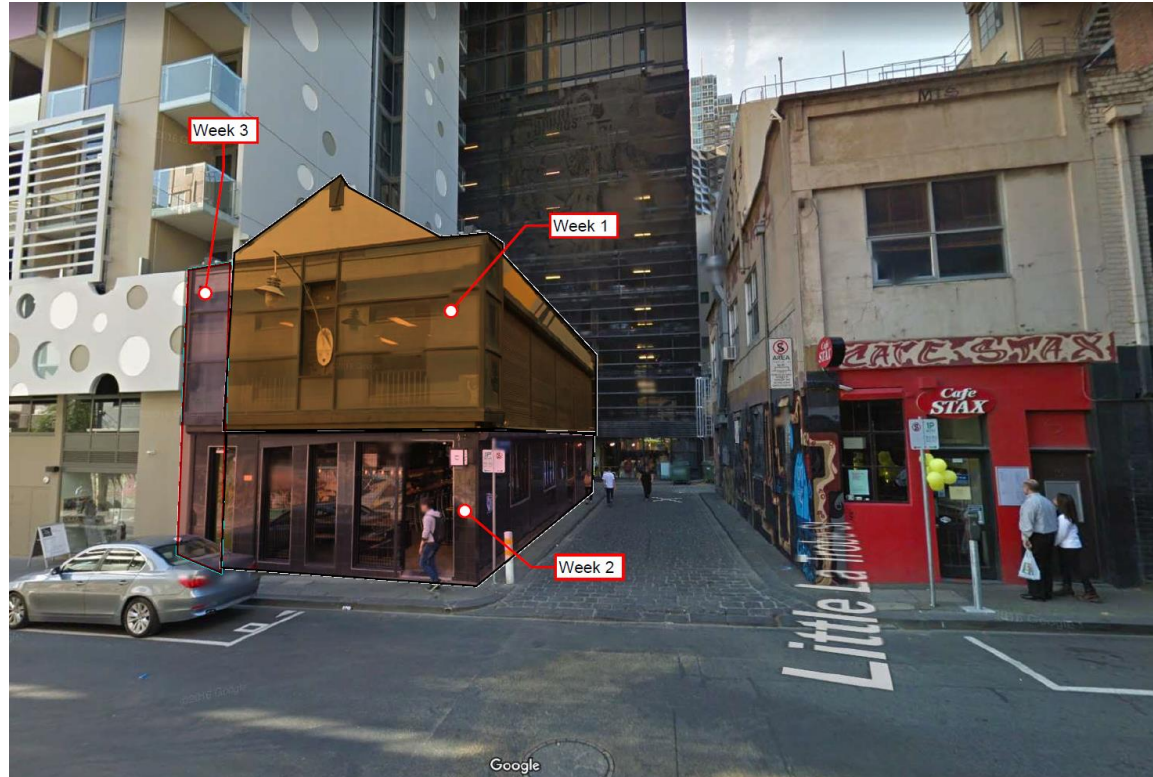


STATE LIBRARY STATION CONSTRUCTION UPDATE

STATE LIBRARY: CONSTRUCTION UPDATE

Site	Works
Franklin Street West site	<ul style="list-style-type: none">• Lay down area establishment – August• Piling begins - September
Little La Trobe Street	<ul style="list-style-type: none">• Service relocations – late-July• Demolition - August
La Trobe Street site	<ul style="list-style-type: none">• Archaeology / earthworks – ongoing until 30 July• Piling – August (pending archaeology)
Franklin, Victoria, Bouverie, Therry streets	<ul style="list-style-type: none">• Groundwater monitoring – ongoing until October

LITTLE LA TROBE STREET: DEMO SEQUENCING



LITTLE LA TROBE STREET: DEMO SEQUENCING



LITTLE LA TROBE STREET: SERVICE RELOCATING

Service relocation works (gas and power) will take place at the eastern end of Little La Trobe Street.

- Works will be sequenced over 5-6 weeks, starting in mid-July

Impacts:

- Localised traffic controls will be set up to guide pedestrians, cyclists, and motorists around the work area
- High noise from excavation, saw cutting, cable haulage and joining, welding



**indicative work area*



QUESTIONS?



TOWN HALL: CONSTRUCTION UPDATE

FLINDERS QUARTER UPDATE

Ongoing archaeological investigations are taking place in the Flinders Quarter site

- Over 200,000 artefacts have been found
- Up to 50 students and 11 community members are participating in the investigations

We have found:

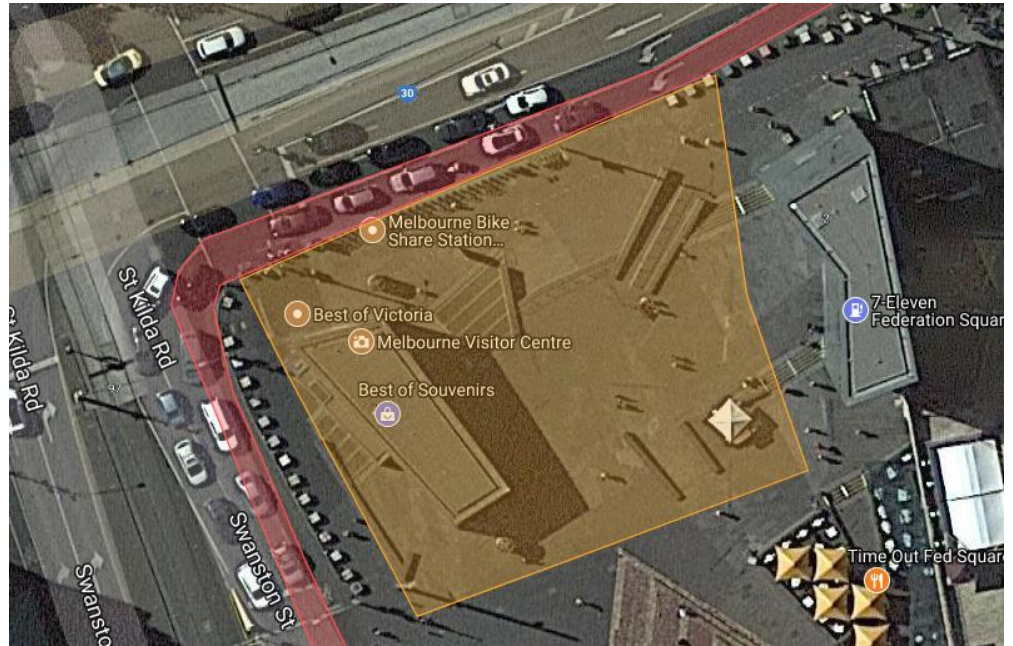
- Coins, 19th century dice, 1920s newspaper, shell, bone, Chinese export porcelain from the 18th century, teeth and more.

Limited site tours are available – advise CYP if you are interested in attending.



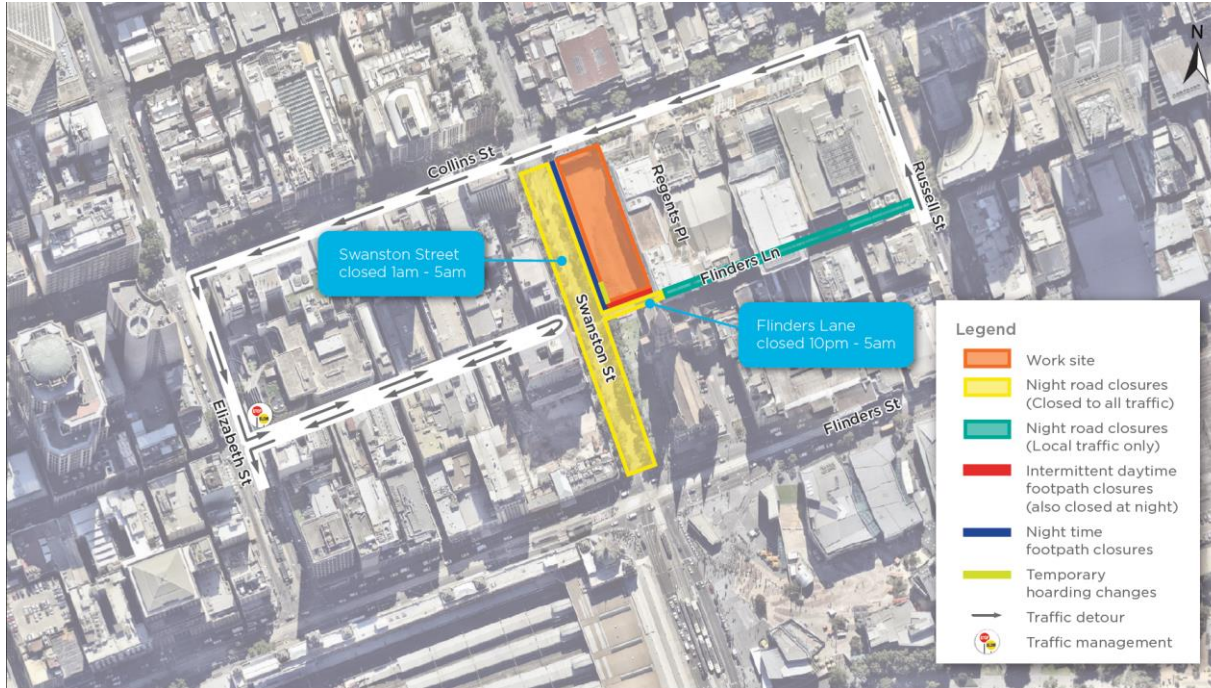
FEDERATION SQUARE UPDATE

- Start: 3 September 2018
- End: ongoing until approximately 2023
- Activities:
 - Current and ongoing discussions with Federation Square, City of Melbourne, and Federation Square businesses about upcoming works



**Indicative only*

CITY SQUARE UPDATE: PILING PREPARATION



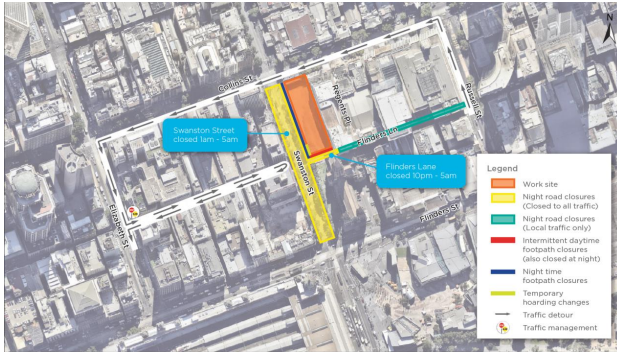
Day works: from 6 July

- Hoarding retrofit of Swanston Street hoarding
- Site equipment delivery and mobilisation

Nightworks:

- Monday 9th – Tuesday 10th
- Monday 16th – Tuesday 17th
- Delivery of oversized equipment and facilities

CITY SQUARE UPDATE: TRAFFIC AND PEDESTRIAN CHANGES



Vehicle:

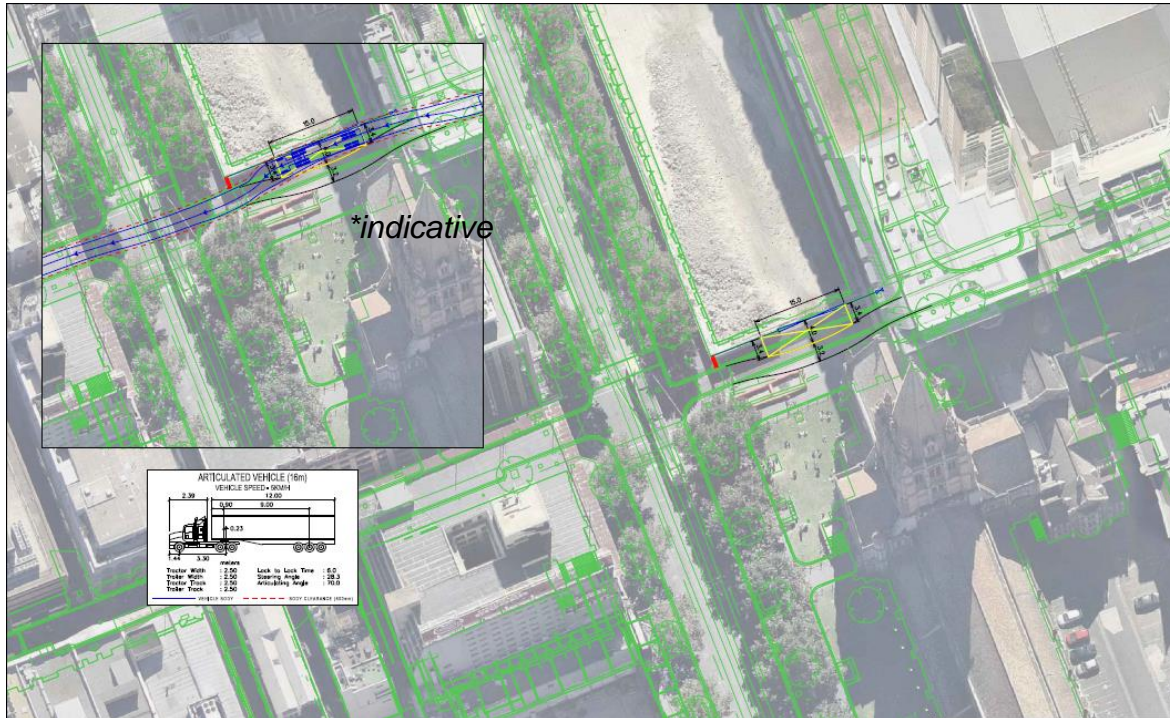
- Overnight closures of Swanston Street, between Flinders Street and Collins Street
- Overnight closures of Flinders Lane between Swanston Street and Regents Place
- Detours via Collins Street and Elizabeth Street, with traffic controllers to advise.

Pedestrians:

- Intermittent day and night closures of northern footpath on Flinders Lane, between Swanston Street and Regents Place
- Overnight closures of the eastern footpath on Swanston Street, between Collins Street and Flinders Street

Traffic management will be in place to safely guide pedestrians, cyclists, and vehicles around the work areas.

FLINDERS LANE LOADING BAY INSTALLATION PROPOSAL



FLINDERS LANE LOADING BAY INSTALLATION PROPOSAL

Proposal: creation of loading bay on the northern side of Flinders Lane adjacent to the City Square site

How:

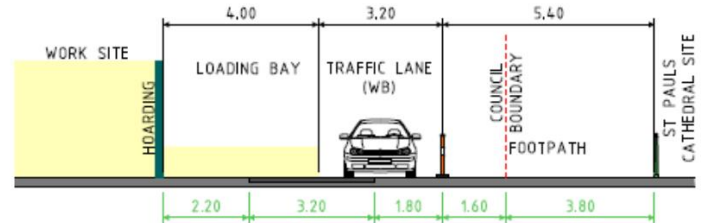
- One to two day closure of Flinders Lane
- Lifting the level of the road to that of the existing footpath between the Westin Hotel service entrance and pedestrian crossing

Impacts:

- Occupation of up to 3.4 metres of the southern footpath


Alternative:

- Flinders Lane closures for up to 6-12 months



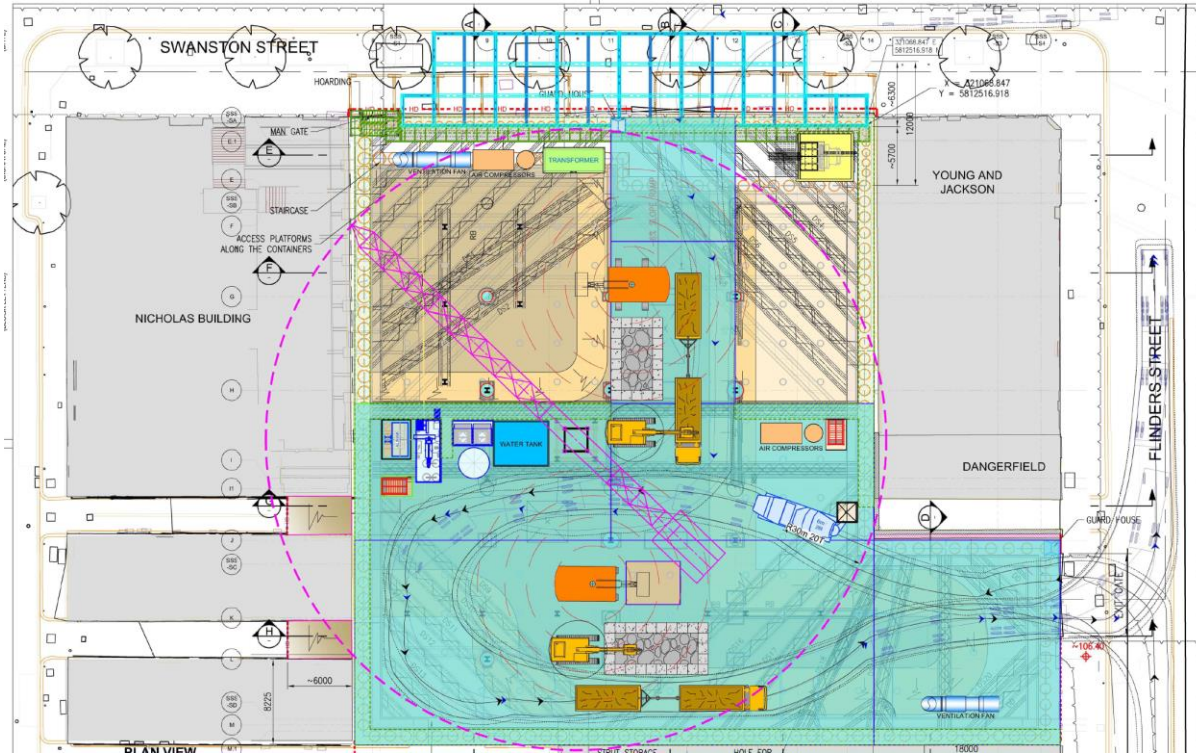


QUESTIONS?



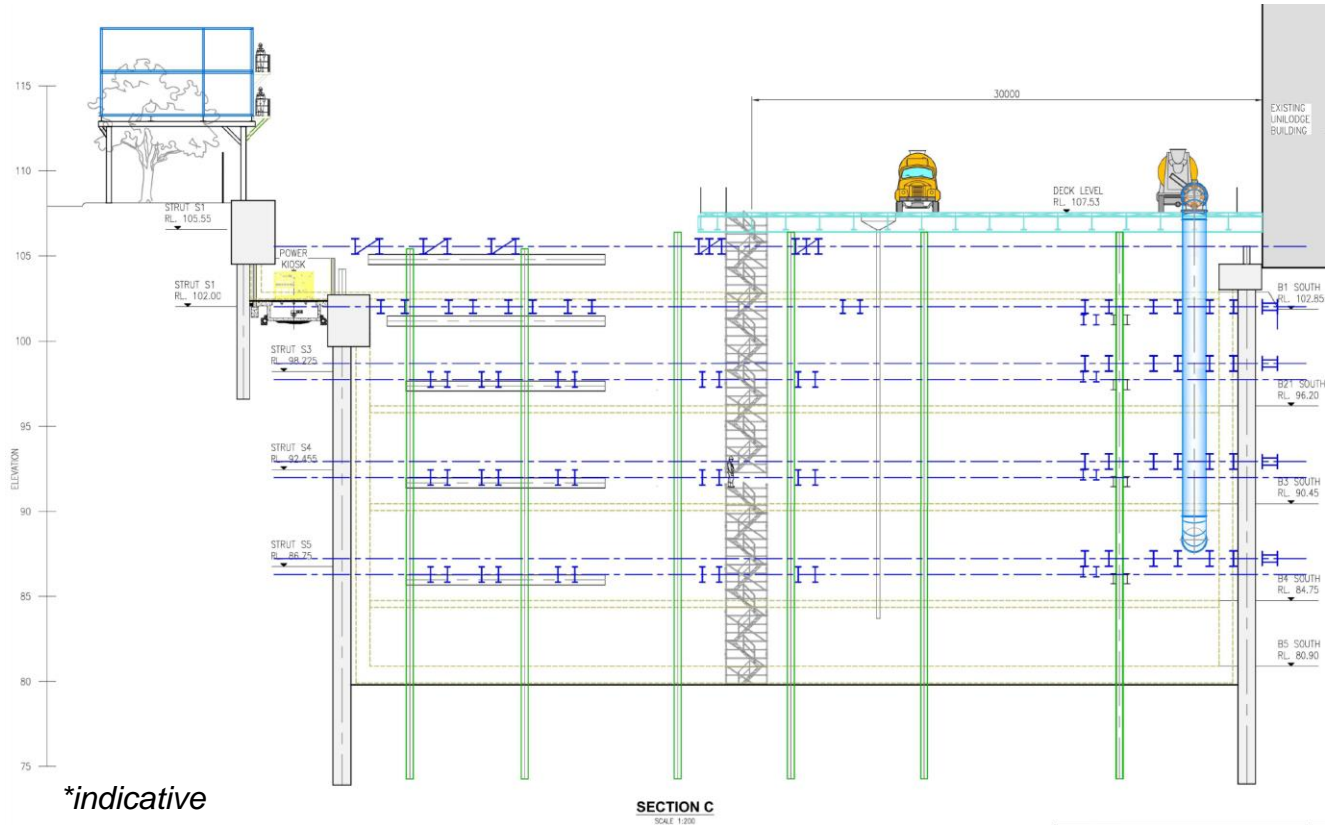
FLINDERS QUARTER: DECK

FLINDERS QUARTER: THE DECK




**indicative*

FLINDERS QUARTER: THE DECK



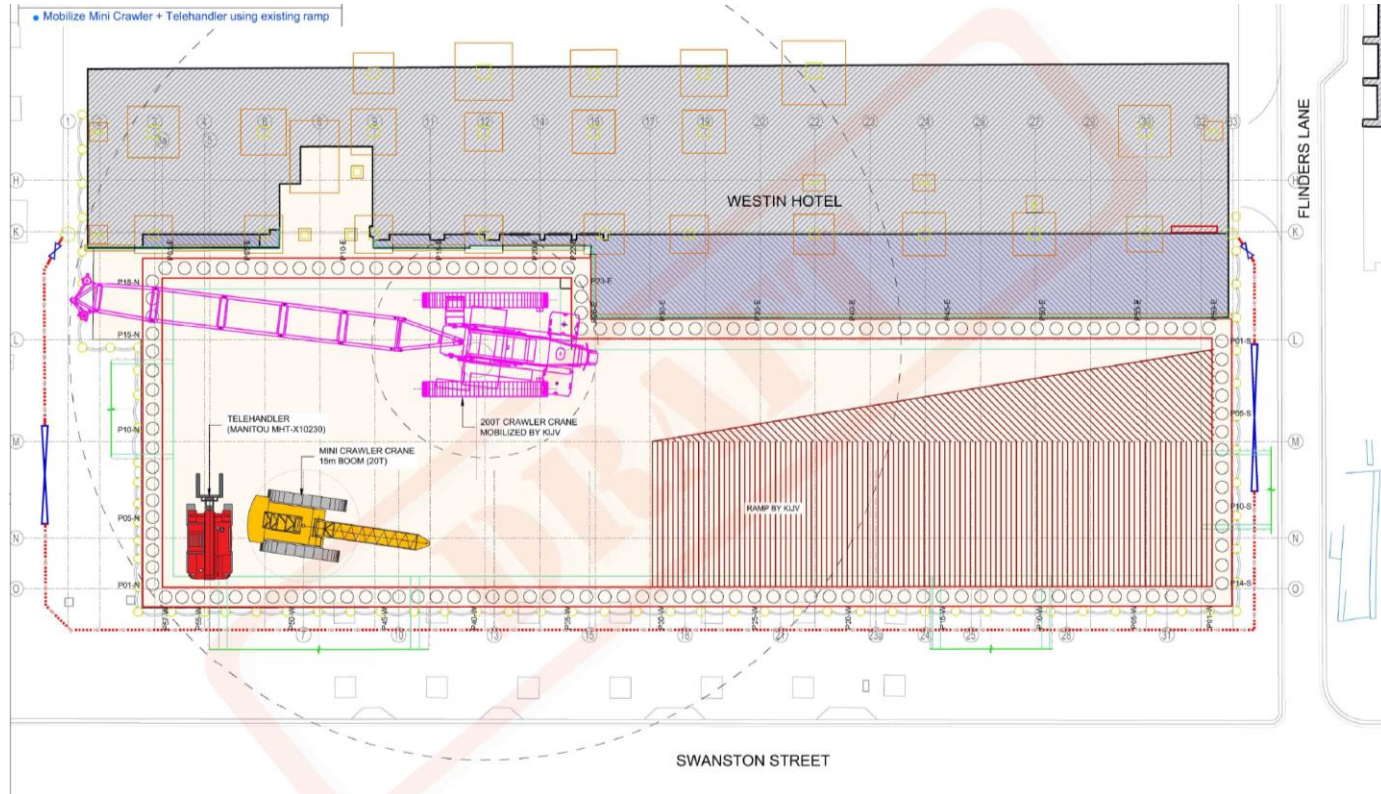


QUESTIONS?

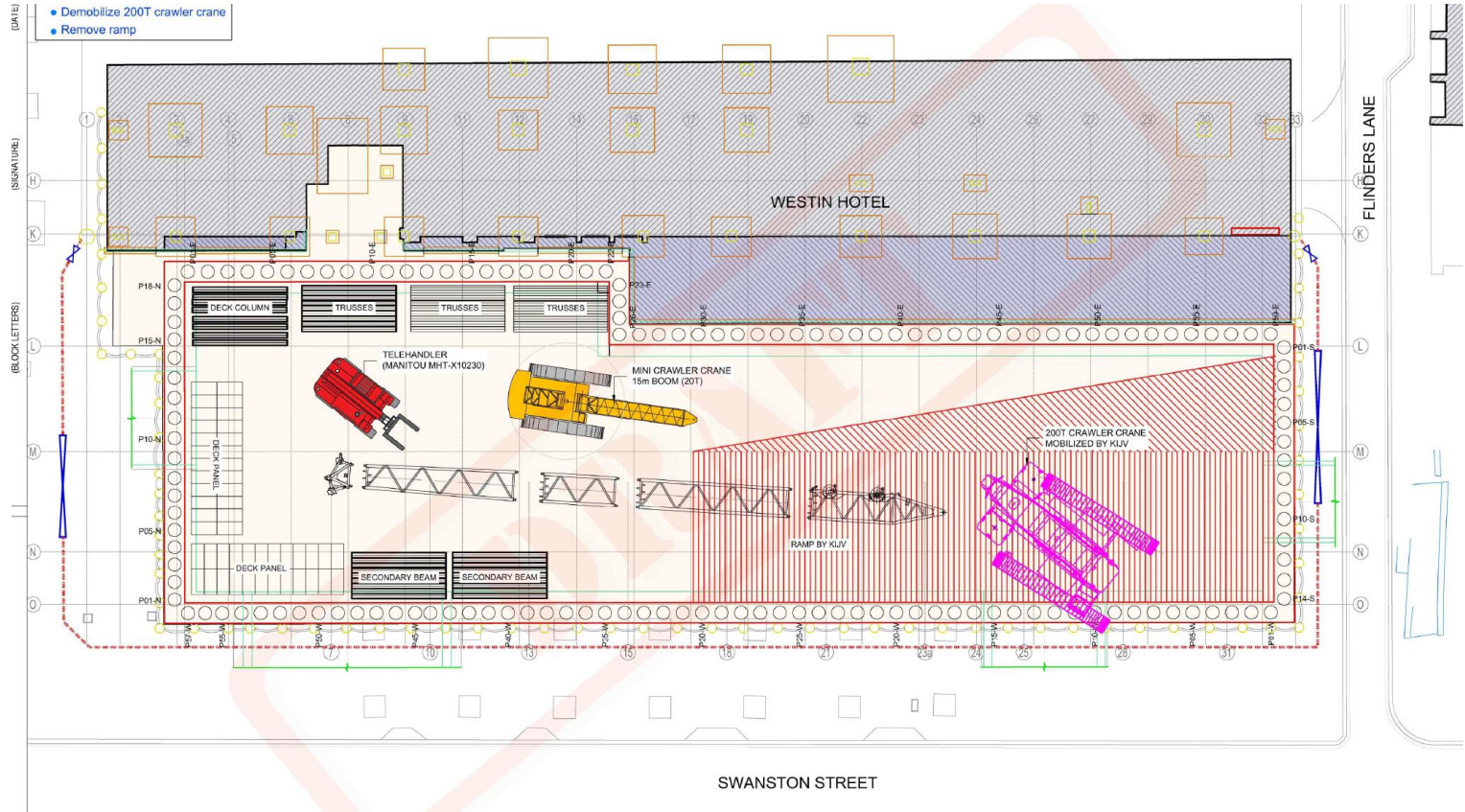


CITY SQUARE: ACOUSTIC SHED CONSTRUCTION SEQUENCE

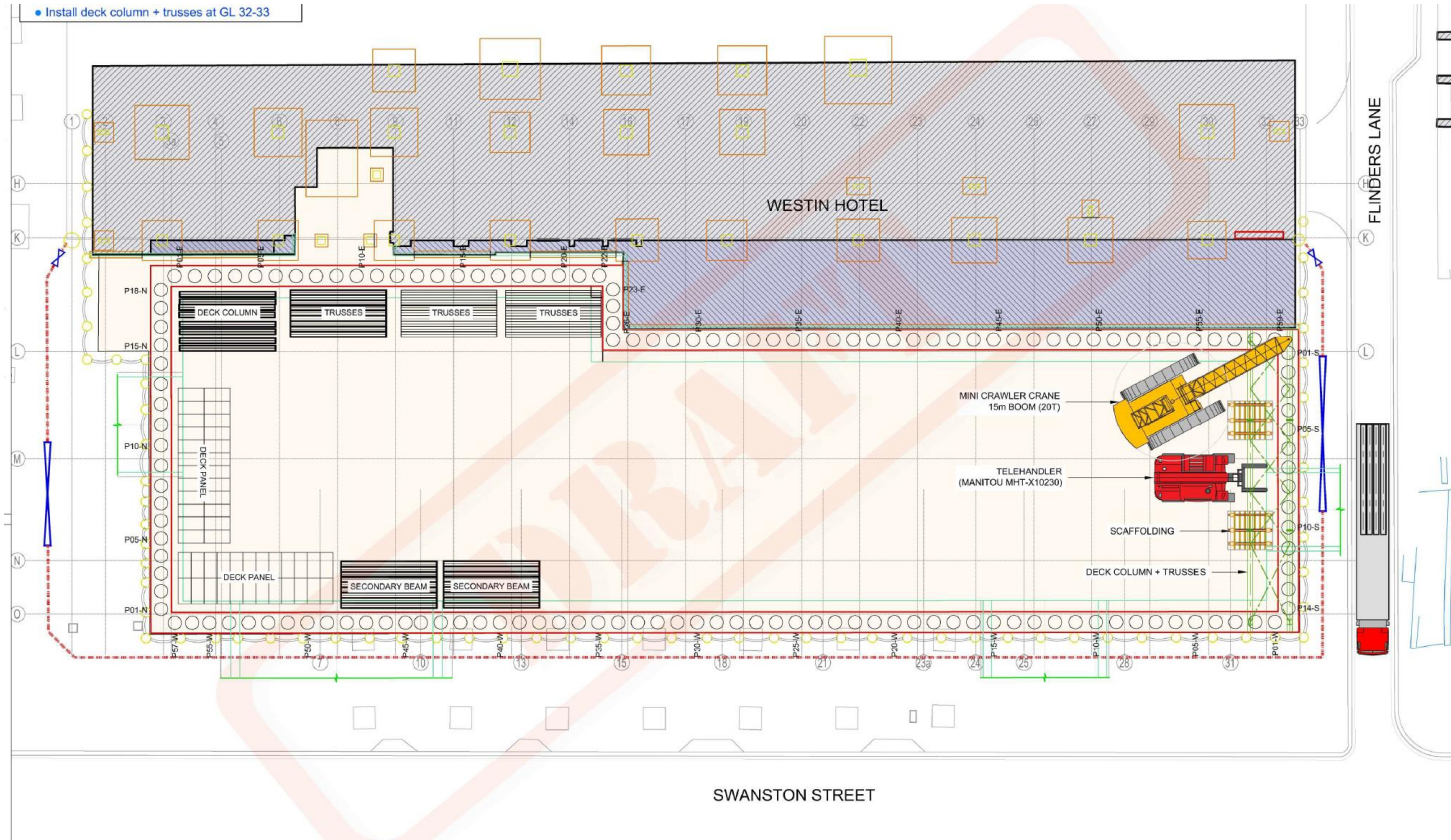
STAGE 1



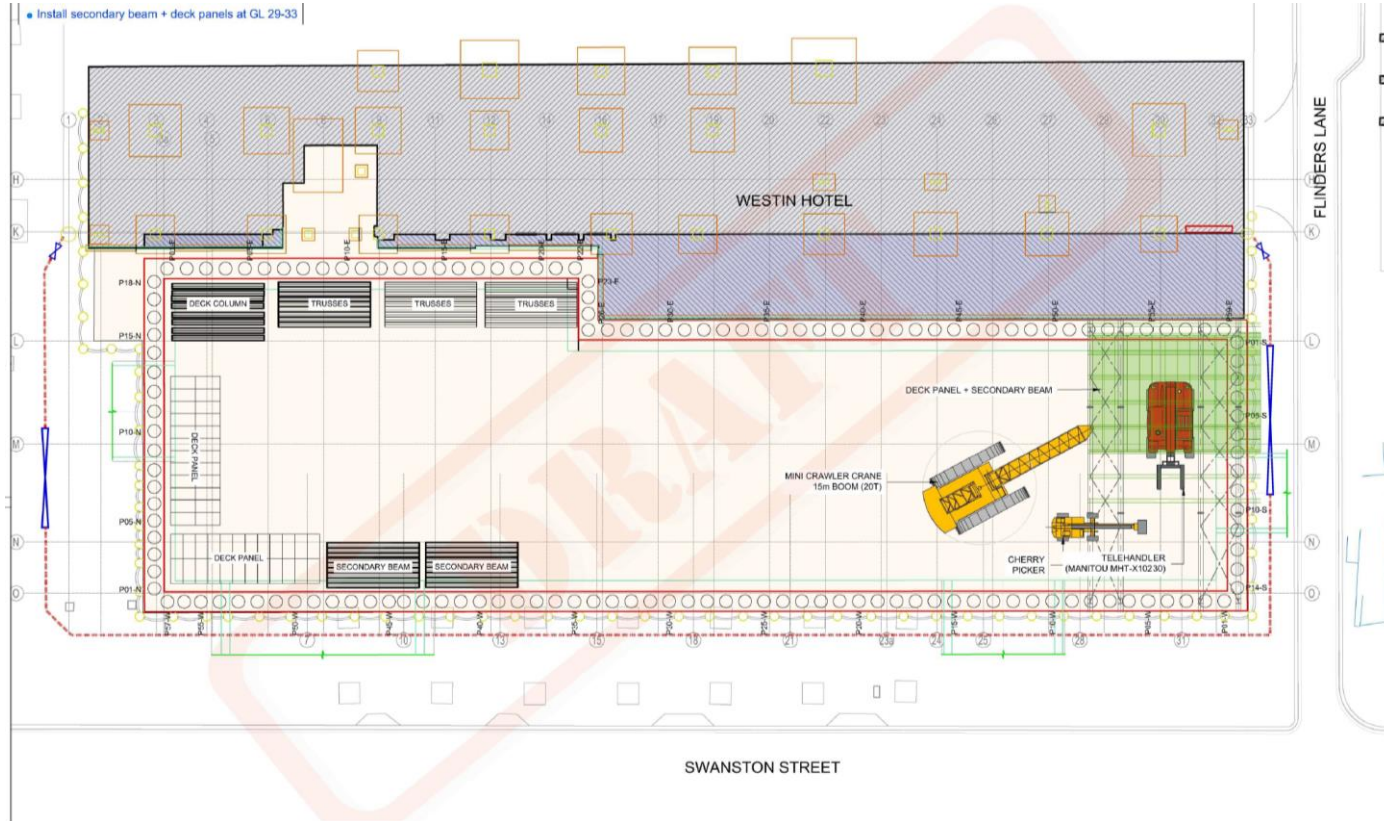
STAGE 2



STAGE 3

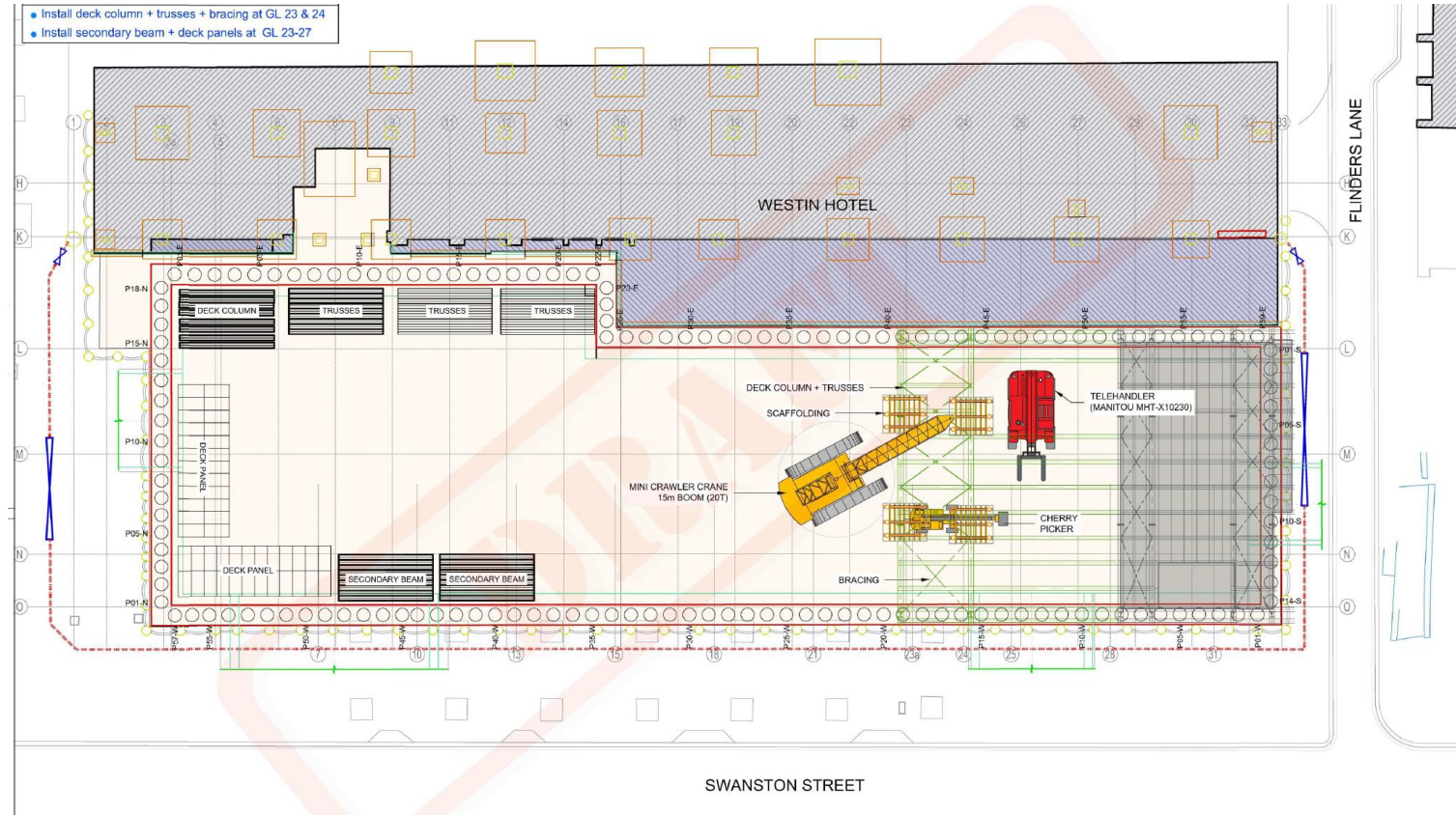


STAGE 4

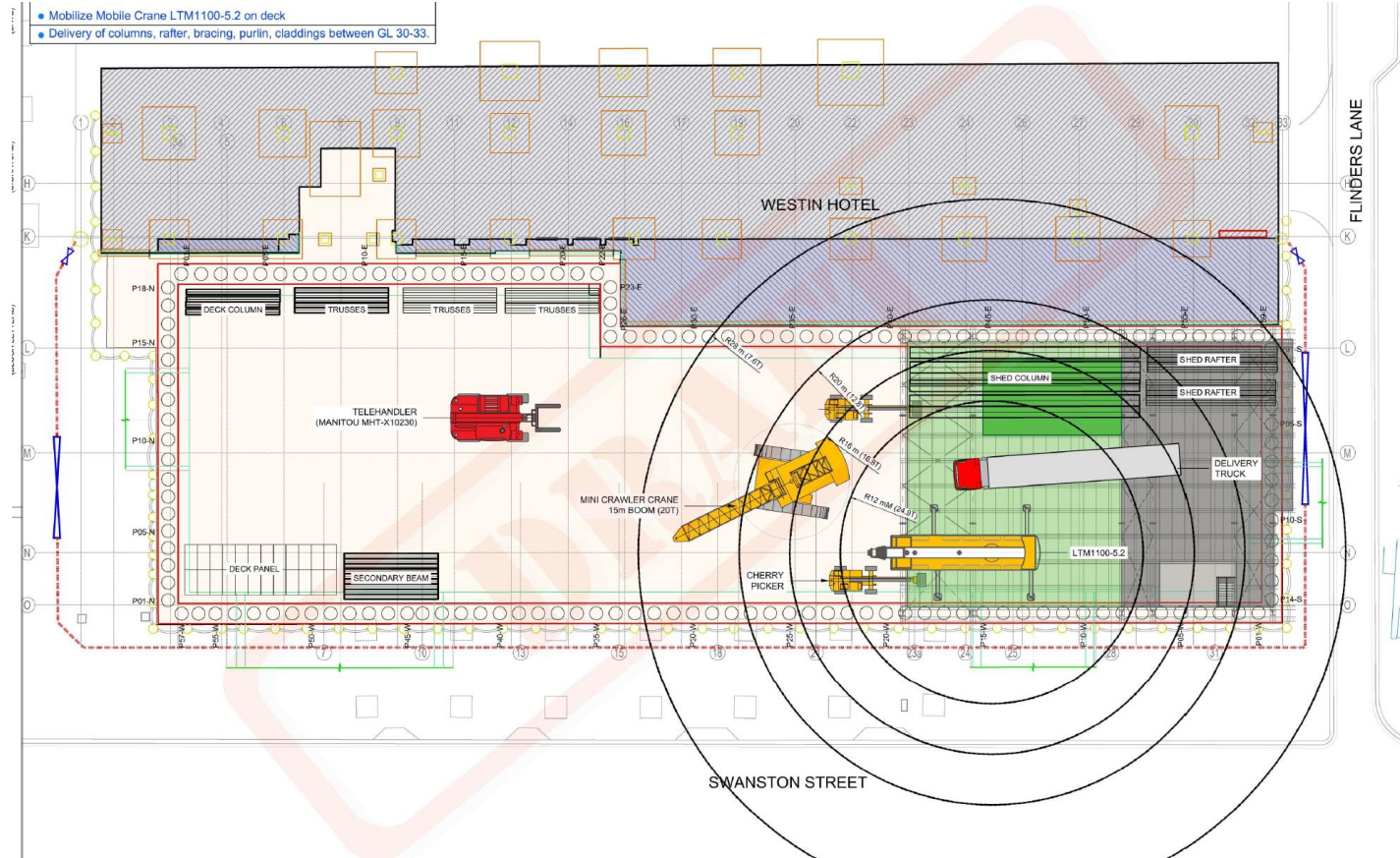


STAGE 5

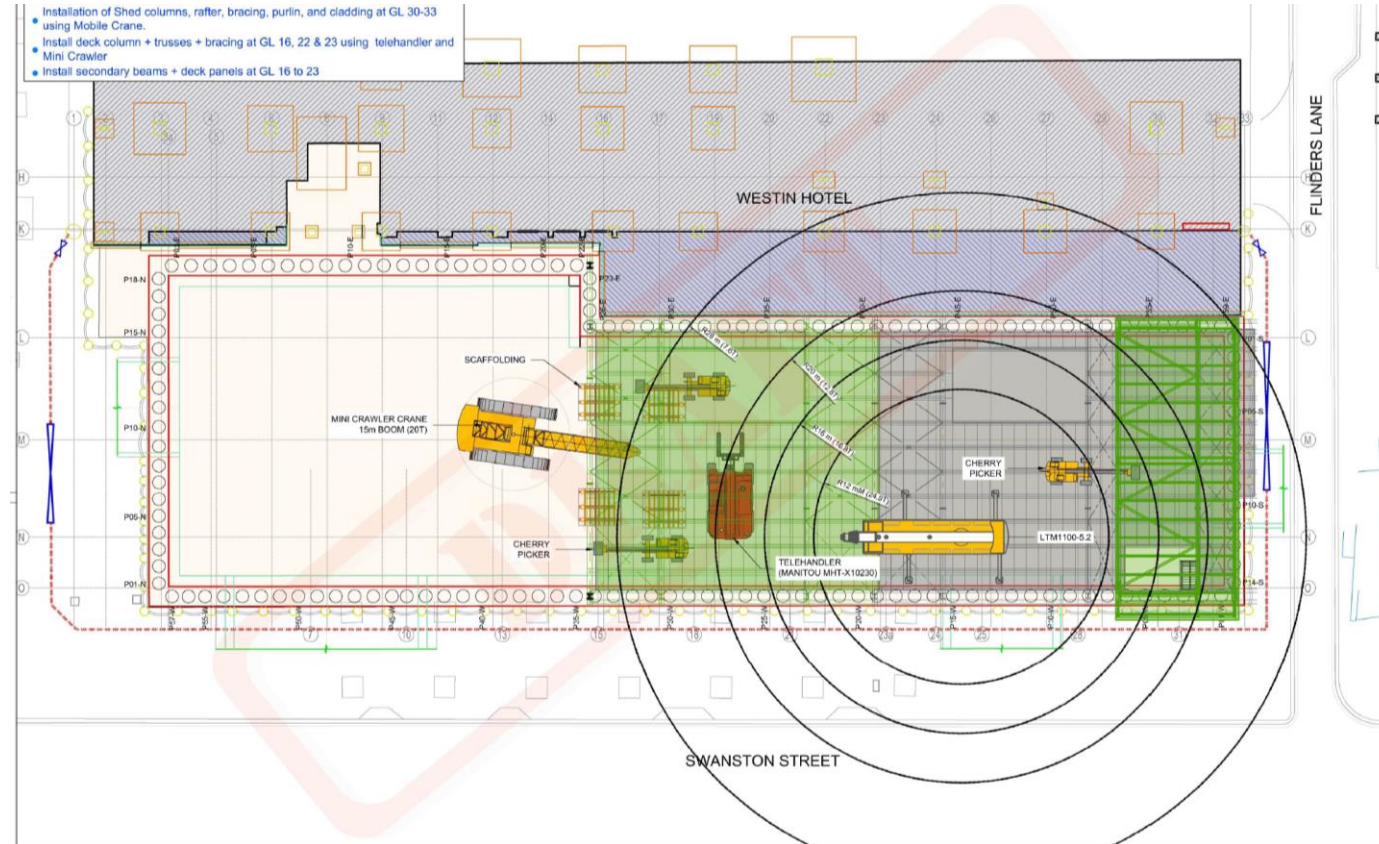
- Install deck column + trusses + bracing at GL 23 & 24
- Install secondary beam + deck panels at GL 23-27



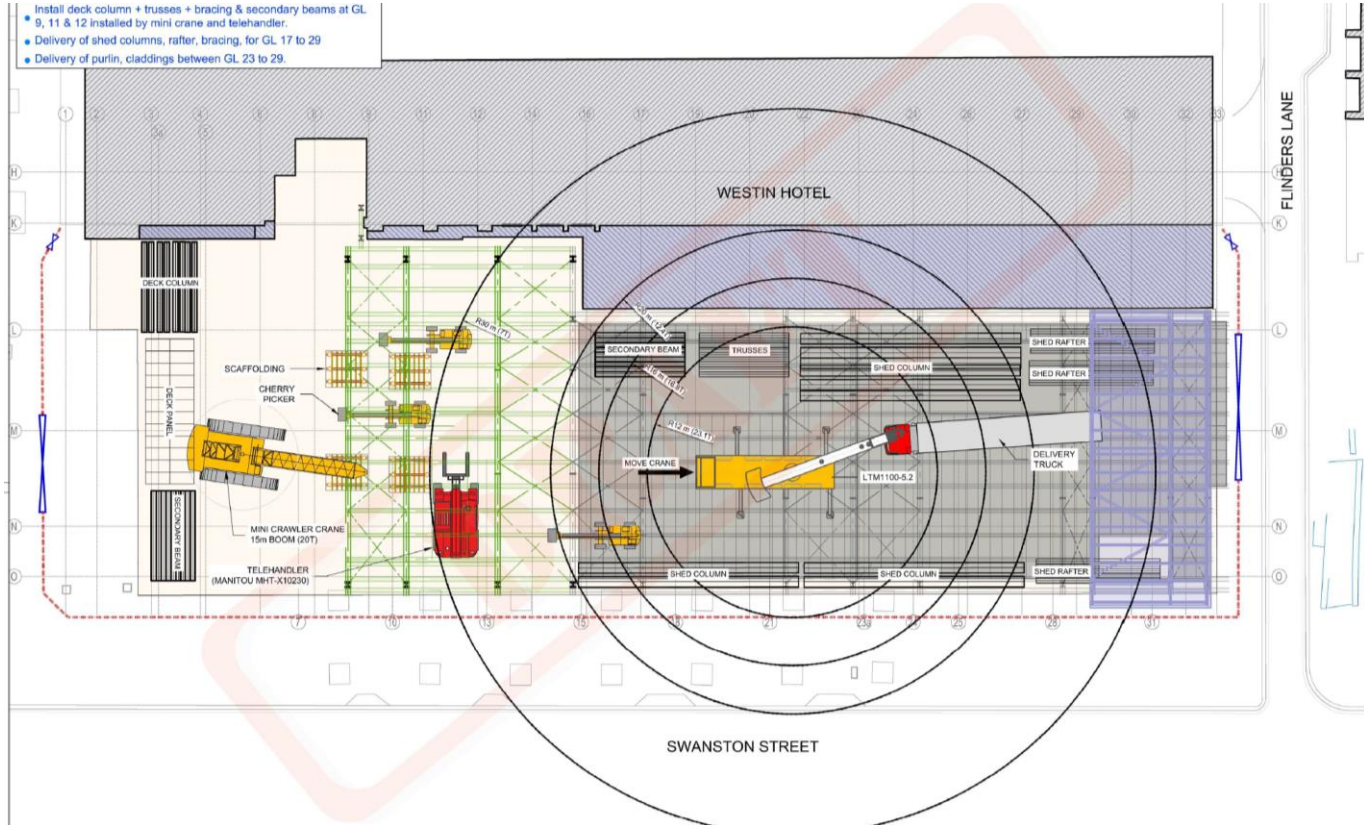
STAGE 6



STAGE 7

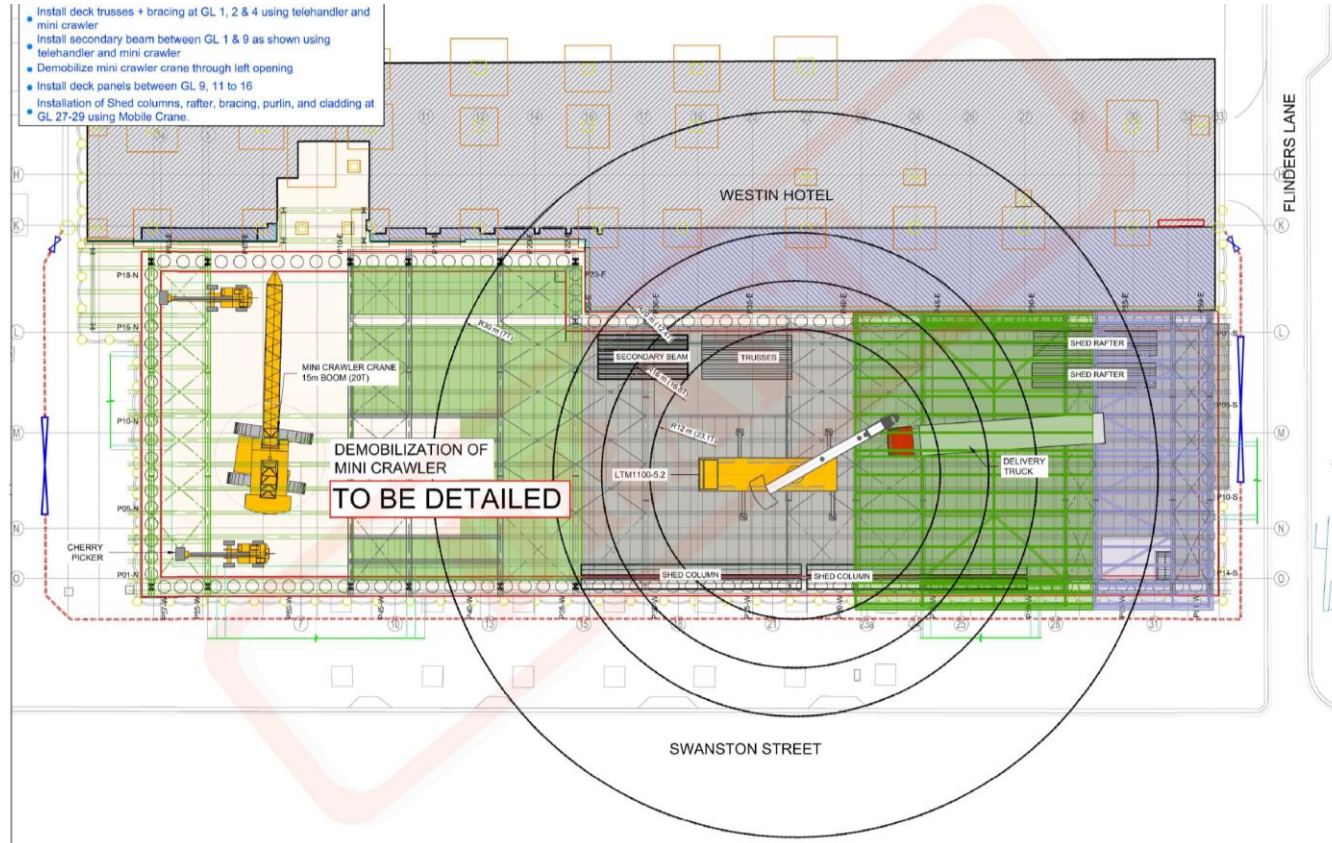


STAGE 8

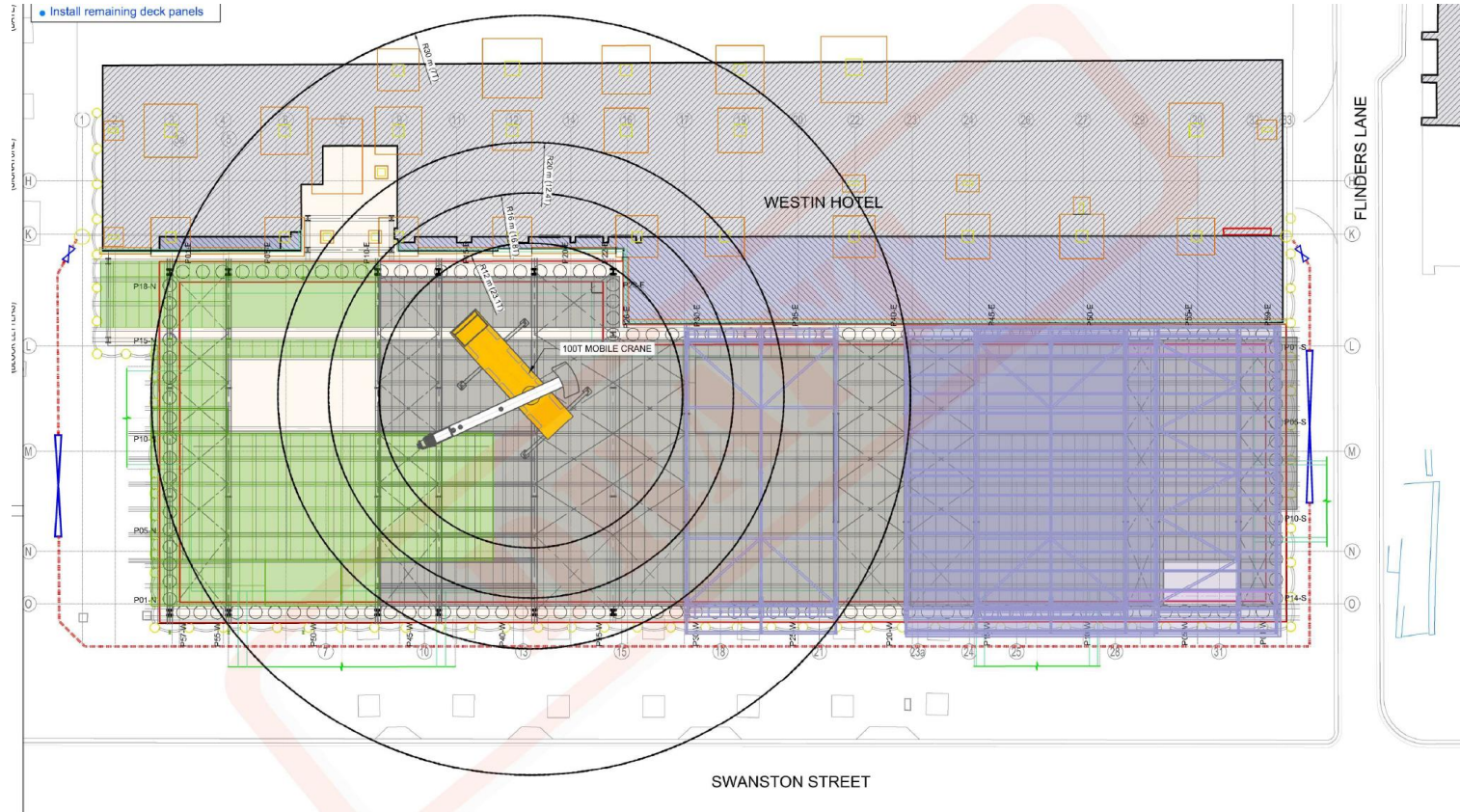


STAGE 9

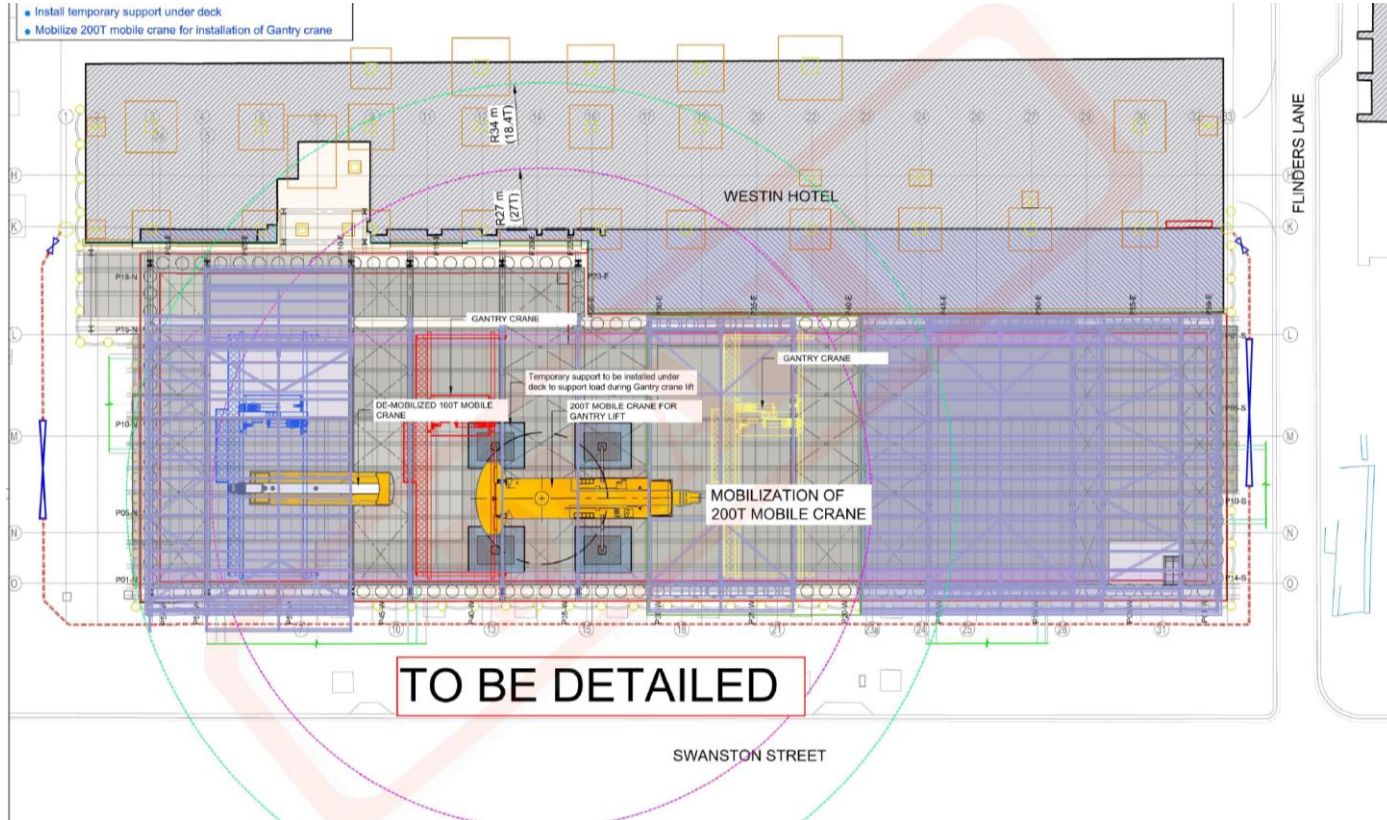
- Install deck trusses + bracing at GL 1, 2 & 4 using telehandler and mini crawler
- Install secondary beam between GL 1 & 9 as shown using telehandler and mini crawler
- Demobilize mini crawler crane through left opening
- Install deck panels between GL 9, 11 to 16
- Installation of Shed columns, rafter, purlin, and cladding at GL 27-29 using Mobile Crane



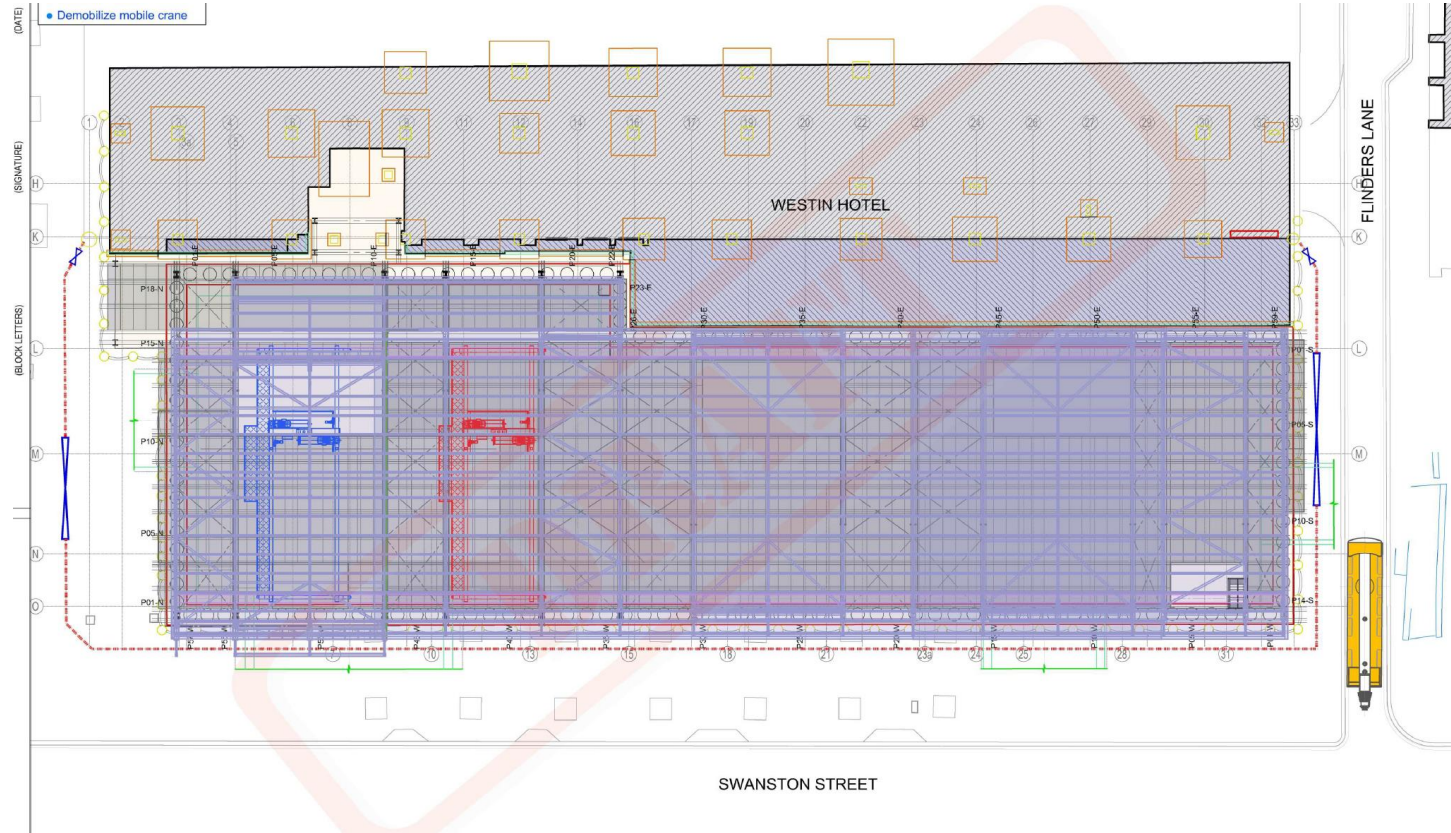
STAGE 10



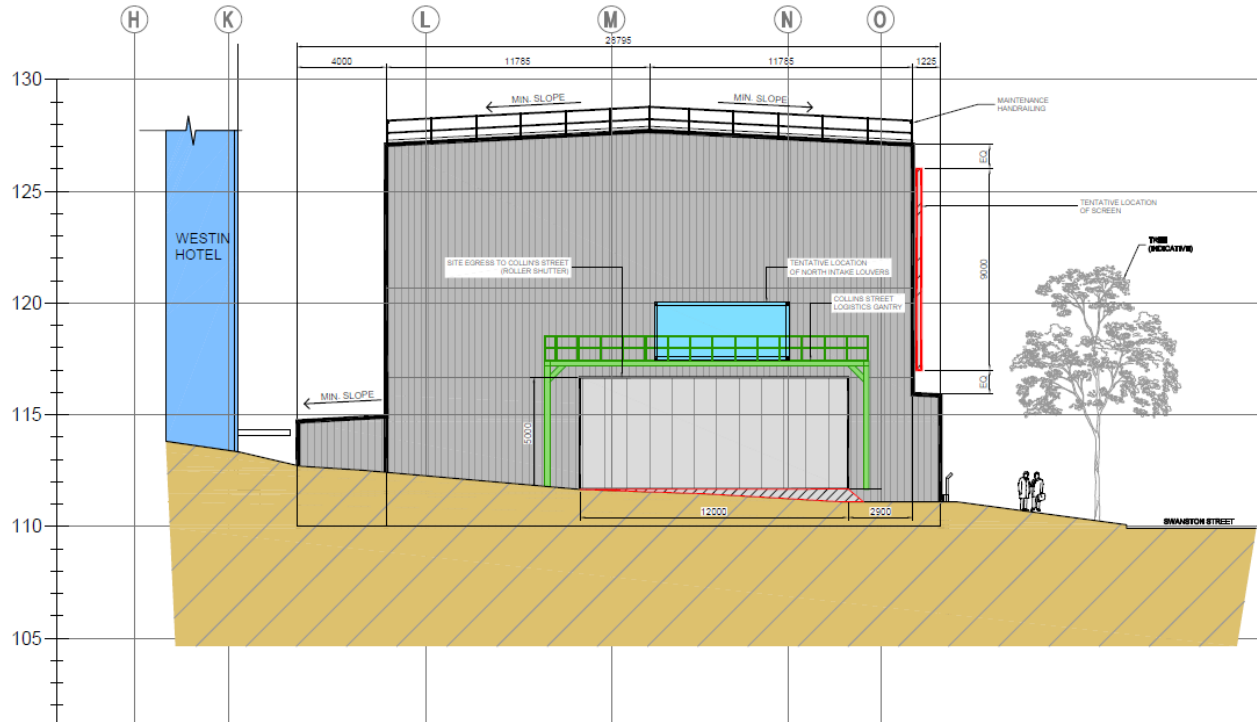
STAGE 11



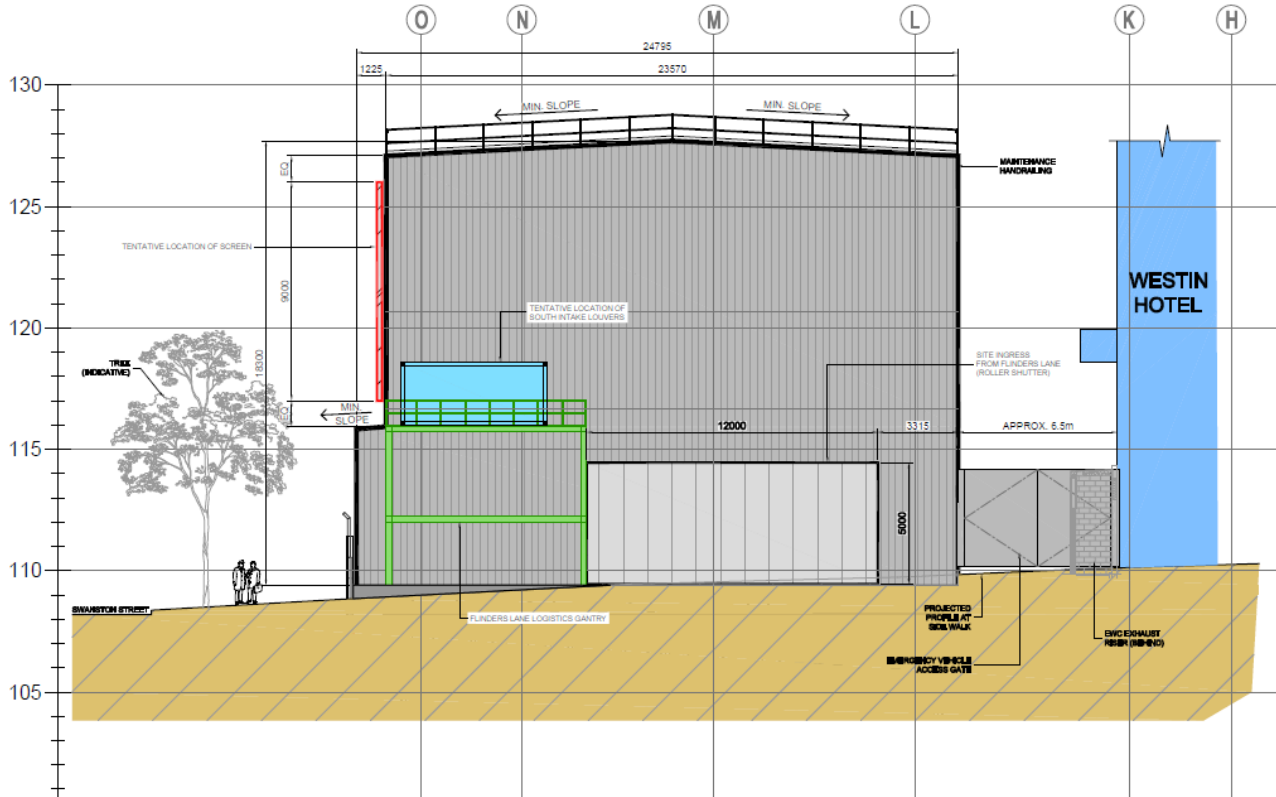
STAGE 12



ACOUSTIC SHED



ACOUSTIC SHED





QUESTIONS?



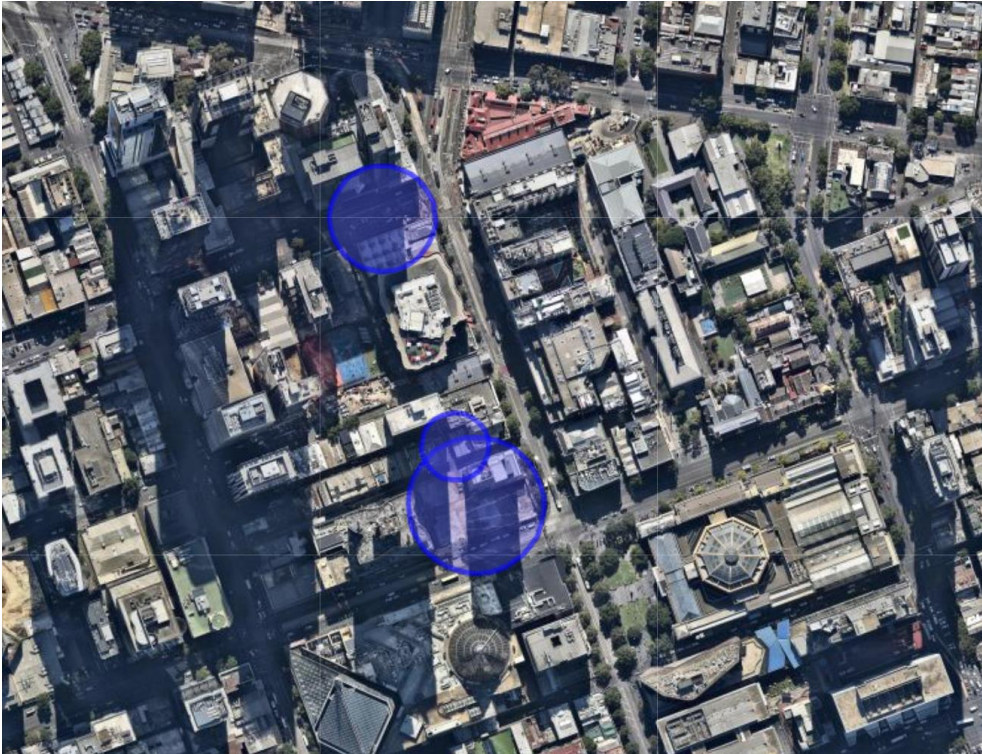
PROPERTY CONDITION SURVEYS: ZONE OF INFLUENCE



BACKGROUND TO THE ZONE OF INFLUENCE

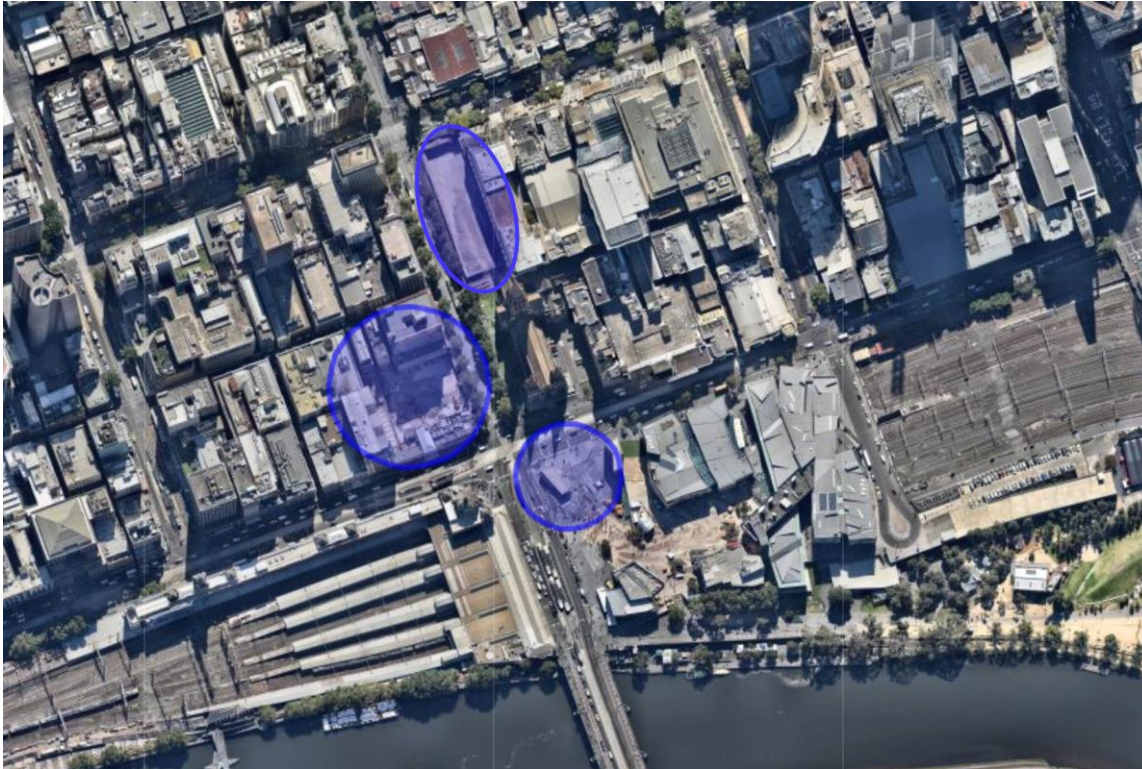
- Property Condition Surveys will happen progressively over the lifetime of the project
- With each major activity, the zone of influence will differ, prompting further property condition surveys
- Two types of zones of influence: vibration and ground settlement
- Activities that prompt a property condition survey include:
 - Piling
 - Shaft excavation
 - Cavern excavation
 - Tunnelling

STATE LIBRARY - ZONES OF INFLUENCE



Indicative zone of influence, based off piling activities

TOWN HALL – ZONE OF INFLUENCE



Indicative zone of influence, based off piling activities



CREATIVE STRATEGY

MISSION & OBJECTIVES

Mission

To minimise the disruption to city life caused by the construction of the Metro Tunnel Project through tactical placemaking, cultural programming and attentive place management.

Objectives

- Keep the city vibrant and moving
- Think laterally about space and place
- Remain quintessentially 'Melbourne' in our approach
- Stay true to local character
- Keep the city's areas active
- Keep Melbourne liveable

PROGRAM INTENT

- Focus is on the edge of construction
- Scope of the program is the scope of the project
- Primary stakeholder is the community experiencing disruption
- Disruption brings unique opportunity for the city to showcase arts and events
- No cash sponsorships – partnerships with key stakeholders and arts institutions
- Robust measuring and reporting will shape future program



CREATIVE ACTIVITIES TO DATE



CULTURAL PROGRAMMING



PLACE MAKING



NEXT 5 MONTHS (INDICATIVE ONLY)

July – partnership with NGV to bring MoMA works to the streets

July – announcement of Open Call for artists for City Square hoarding

July – supporting partner for ‘Blak Lives Matter’ with Koorie Heritage Trust

July – Metro Tunnel Walking Tour as part of Open House

August – supporting Uni of Melbourne Open Day events at Parkville

August – supporting City of Melbourne for Melbourne Fashion Week

Sept – supporting Fed Square with creative and wayfinding on hoarding

Oct – supporting Josh Muir exhibition ‘Silence’ with Koorie Heritage Trust

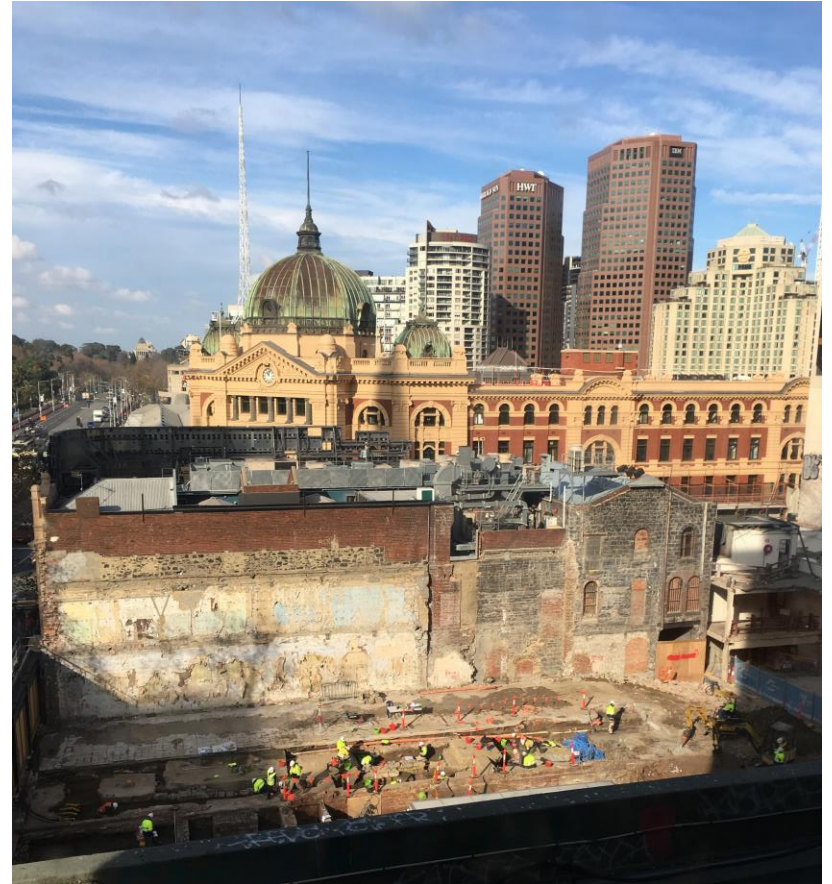
Nov – supporting City of Melbourne for Music Week

Dec – award for Koorie Art Show entry that will also go on hoarding

Dec – supporting City of Melbourne’s Christmas Festival

CBD FOCUS

- Federation Square hoardings
- City Square hoardings
- Port Phillip arcade hoardings
- Artist response to Flinders Quarters archaeological dig
- Premier events with City of Melbourne
- Open House Walking Tour
- Pre-planning with RMIT for 2019 events when CYP takes over from Early Works for CBD North sites





OPENING OF METRO TUNNEL HQ

WEEK 1 SUMMARY

Almost
1,500
people attended



Virtual Reality
TBM experience is
the most popular
attraction

More than
150
schoolkids
attended



Weekend visitors
mentioned local
newspaper advertising



Weekday visitors
mentioned media coverage
on Ch 7 and 3AW



Visitors love finding their
house and rail lines on
the wall maps

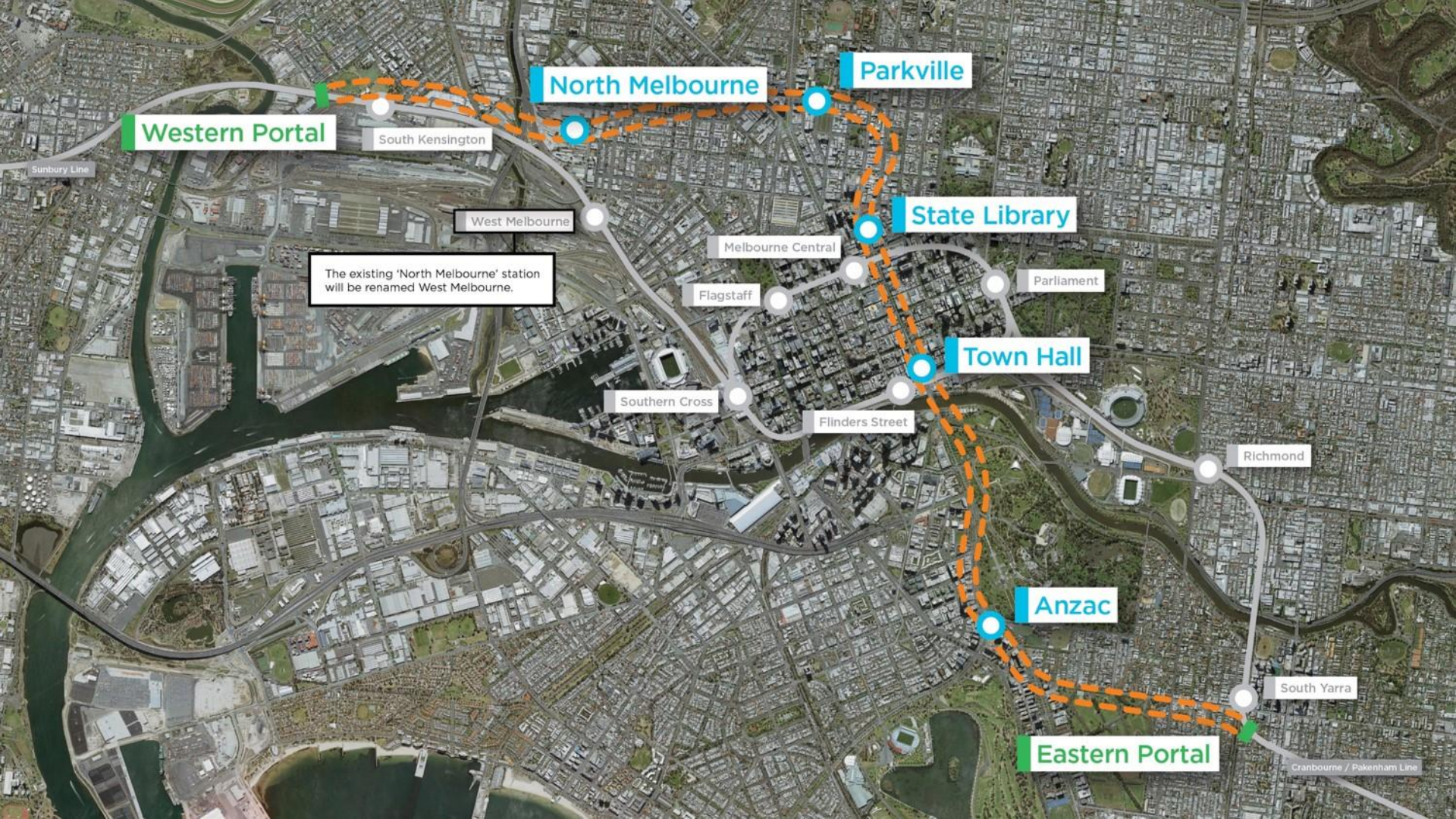
98%
of visitors are having a
positive customer experience

WHAT'S AT METRO TUNNEL HQ

- Interactive games to discover benefits of Metro tunnel for your train trip
- Staff to assist with queries about the works
- Virtual reality goggles to explore the world of tunnel boring machines
- An Education Program for school students learn how public transport is changing and consider the Melbourne of the future
- Between now and September, approximately 1400 students will take part in the Education Program.



GENERAL FEEDBACK AND ITEMS FOR FUTURE DISCUSSION



Western Portal

South Kensington

North Melbourne

Parkville

West Melbourne

Melbourne Central

State Library

Parliament

Flagstaff

Town Hall

Southern Cross

Flinders Street

Richmond

Anzac

South Yarra

Eastern Portal

The existing 'North Melbourne' station will be renamed West Melbourne.

Sunbury Line

Cranbourne / Pakenham Line