



## VICTORIAN TOURISM AND INDUSTRY UPDATE

28 AUGUST 2018



# MAJOR TRANSPORT PROJECTS

## Level Crossing Removal Authority

50 Level Crossing Removals  
Hurstbridge Rail Line Upgrade  
Mernda Rail Extension  
New Frankston Station  
Kananook Train Storage Facility

## Rail Projects Victoria

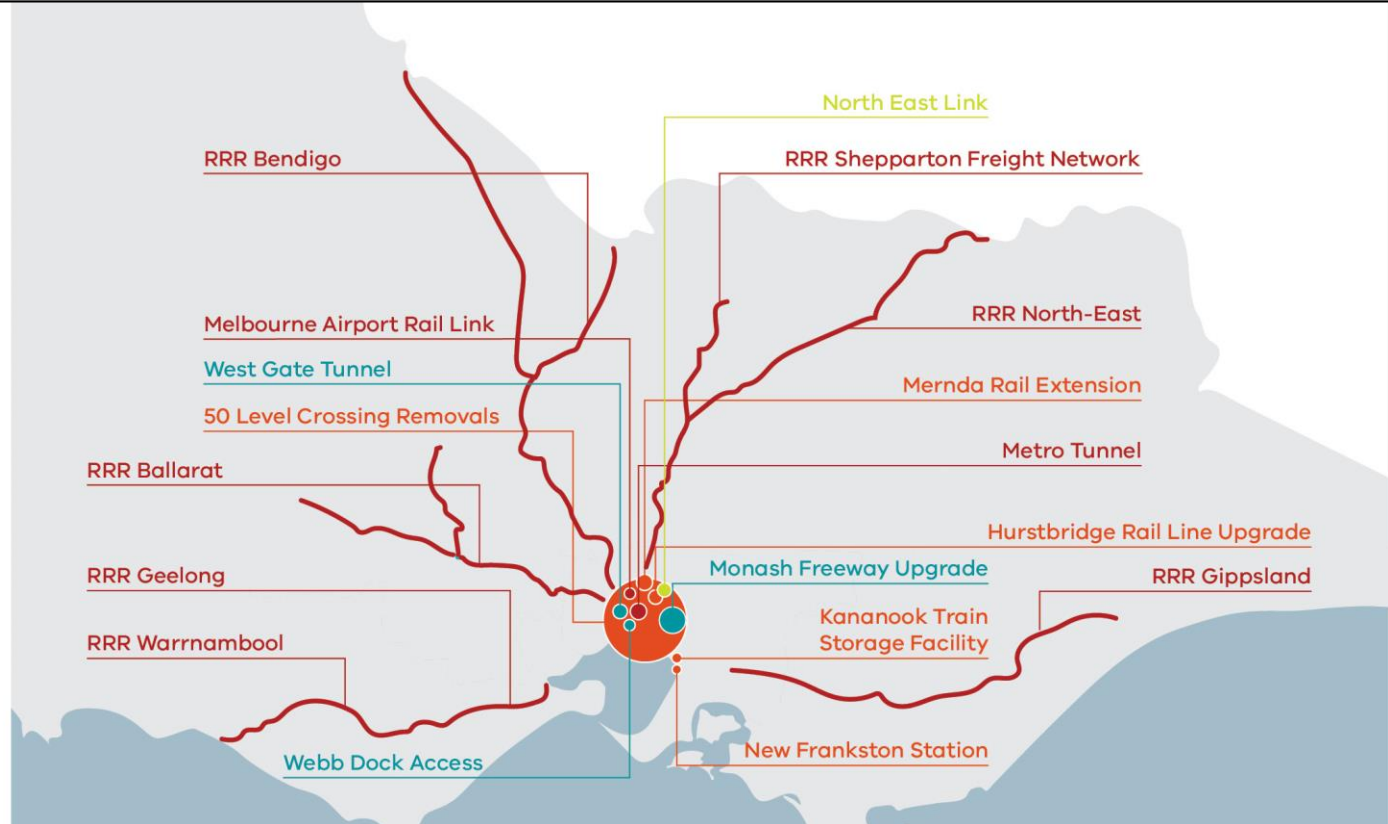
Regional Rail Revival (RRR)  
Metro Tunnel  
Melbourne Airport Rail Link

## Western Distributor Authority

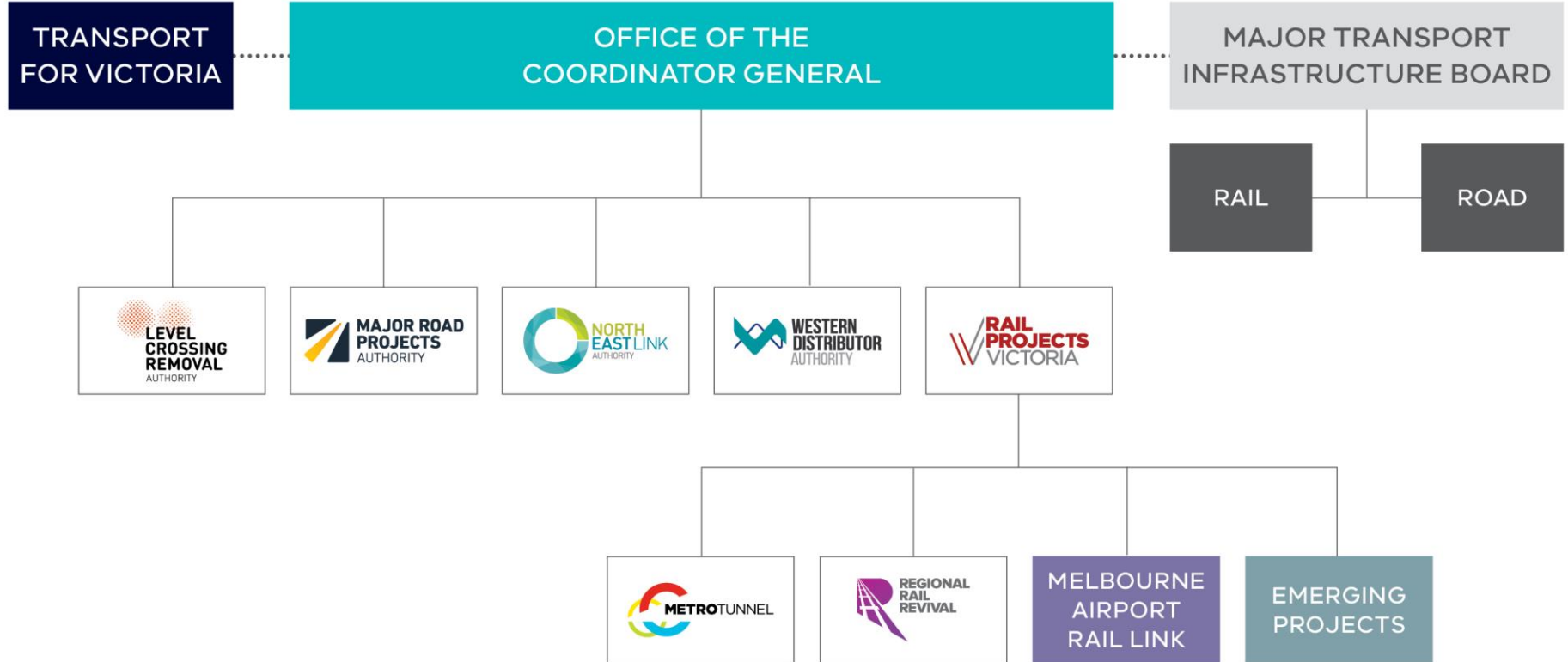
West Gate Tunnel  
Monash Freeway Upgrade  
Webb Dock Access

## North East Link Authority

North East Link



# DELIVERY MODEL



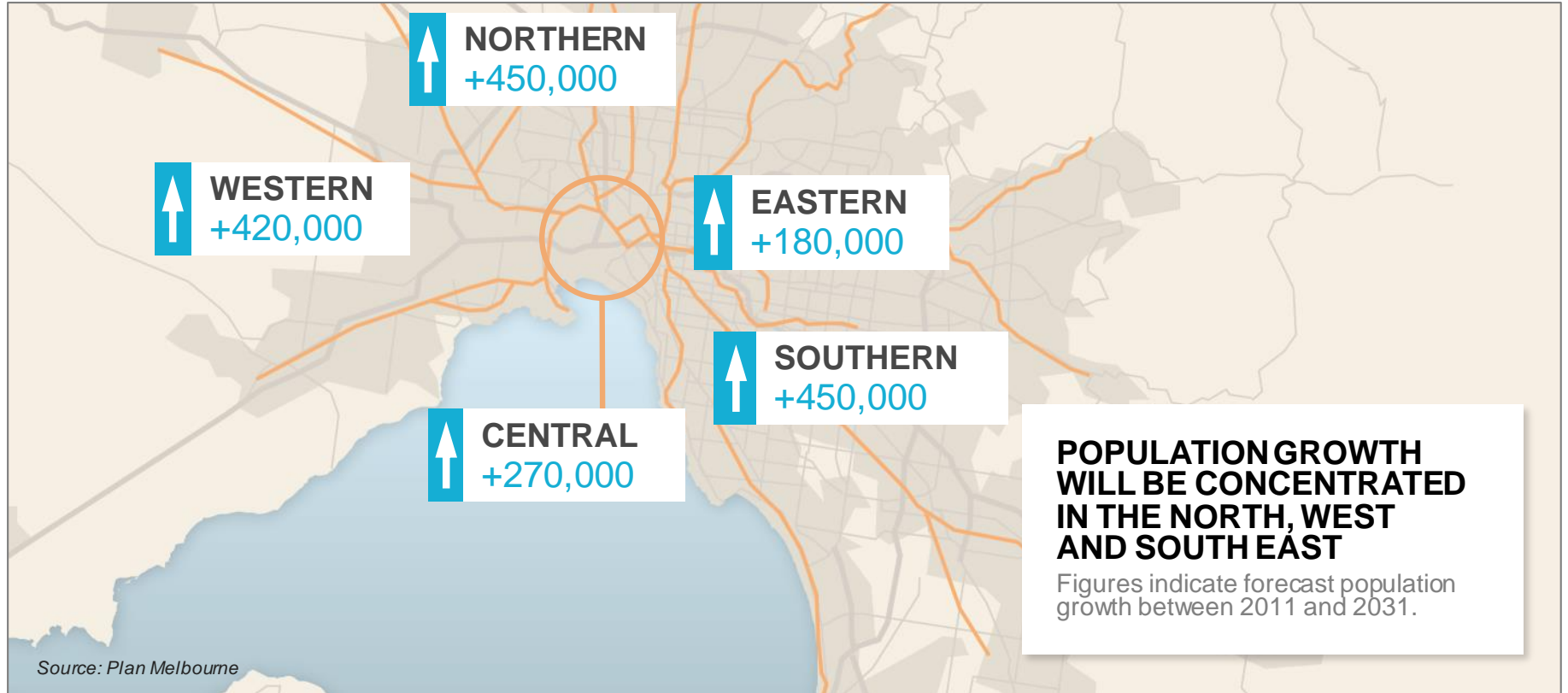




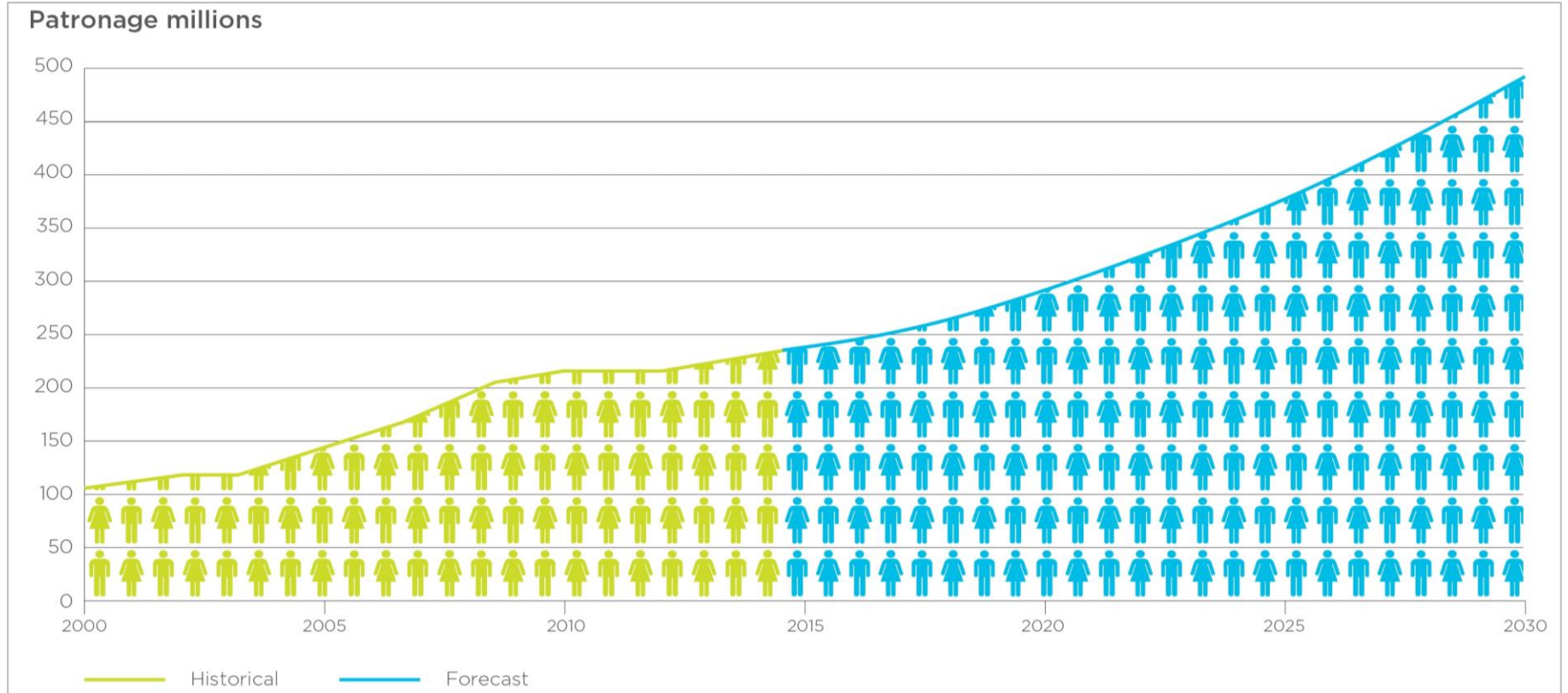
# METRO TUNNEL PROJECT



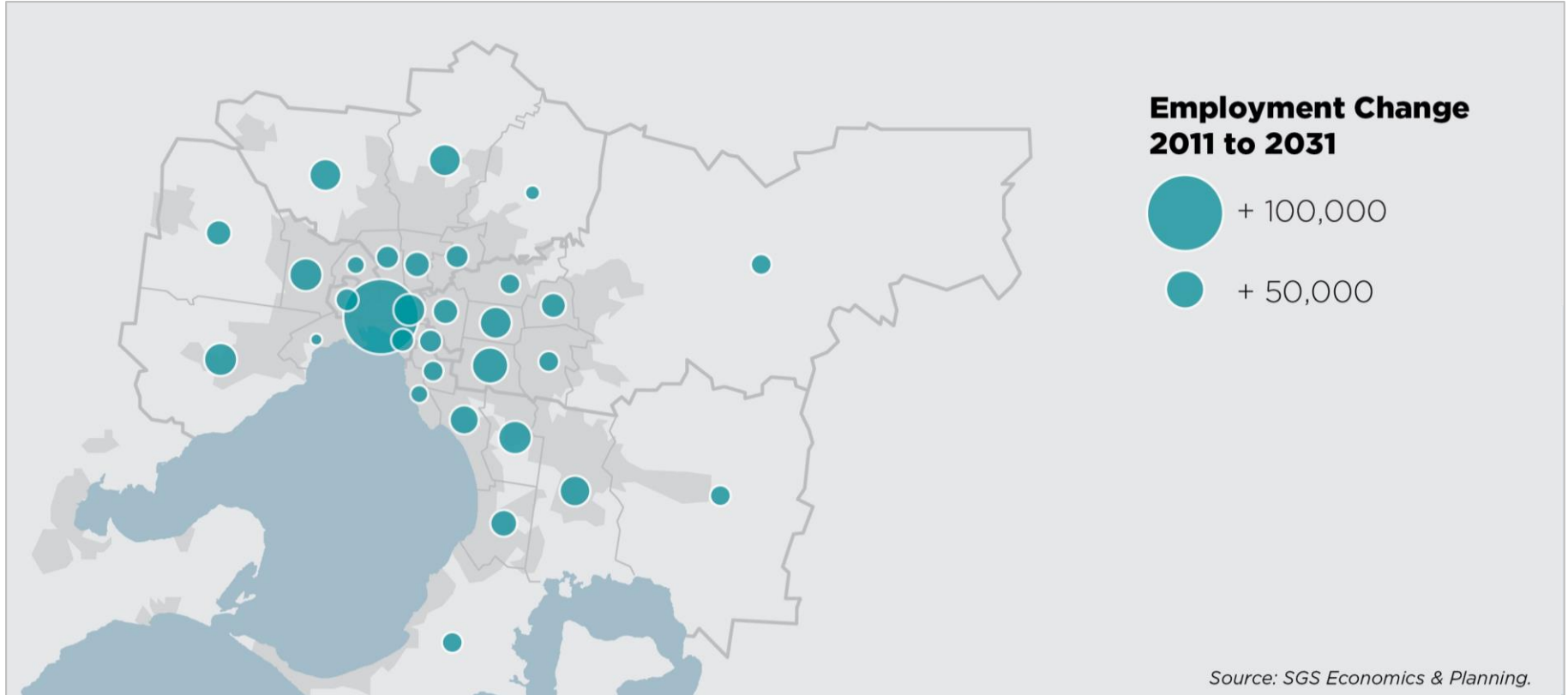
# POPULATION GROWTH



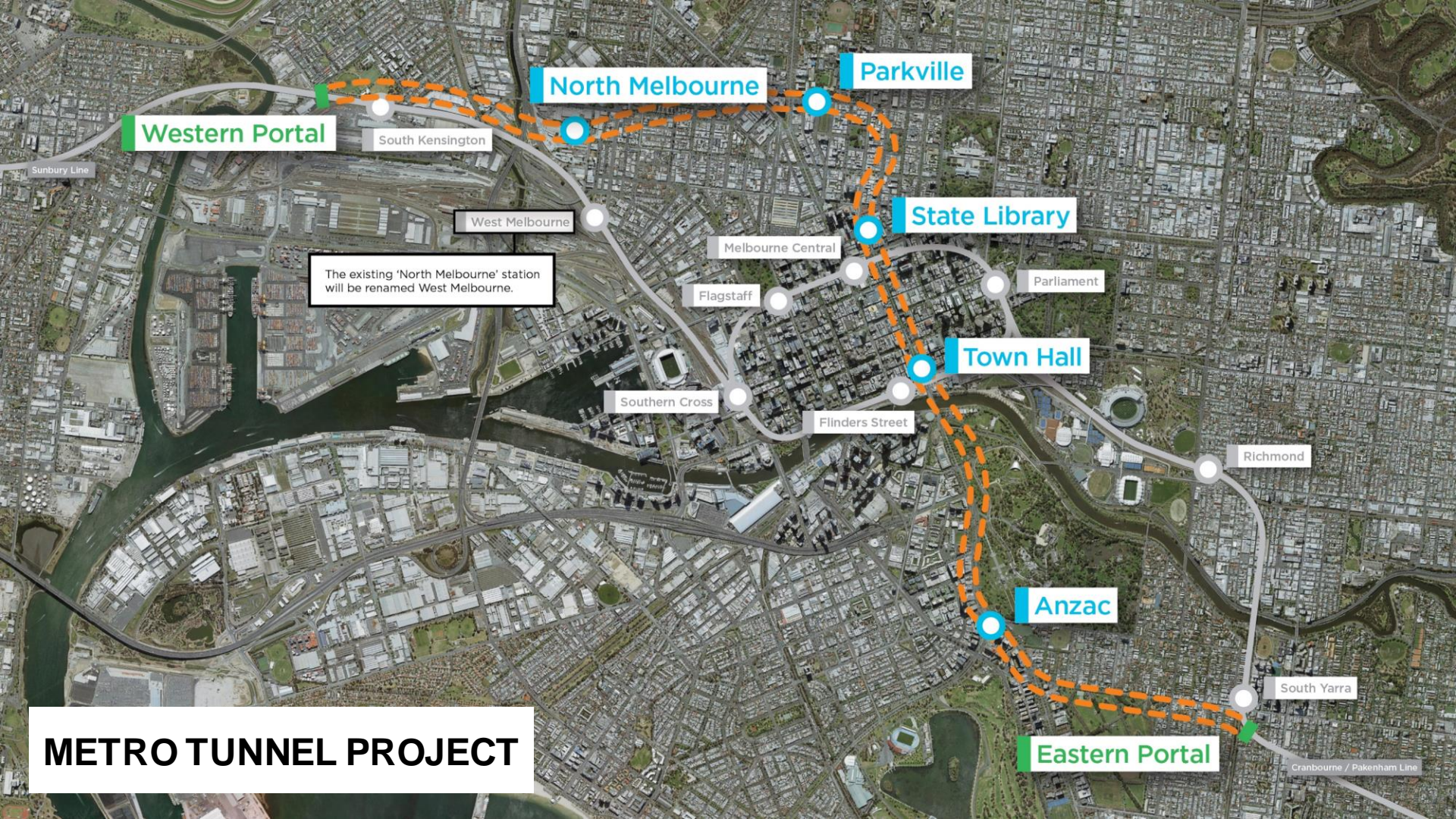
# METROPOLITAN RAIL PATRONAGE



# **JOBS GROWTH – CBD FOCUS**







Western Portal

South Kensington

North Melbourne

Parkville

State Library

Parliament

Town Hall

Southern Cross

Flinders Street

Richmond

Anzac

South Yarra

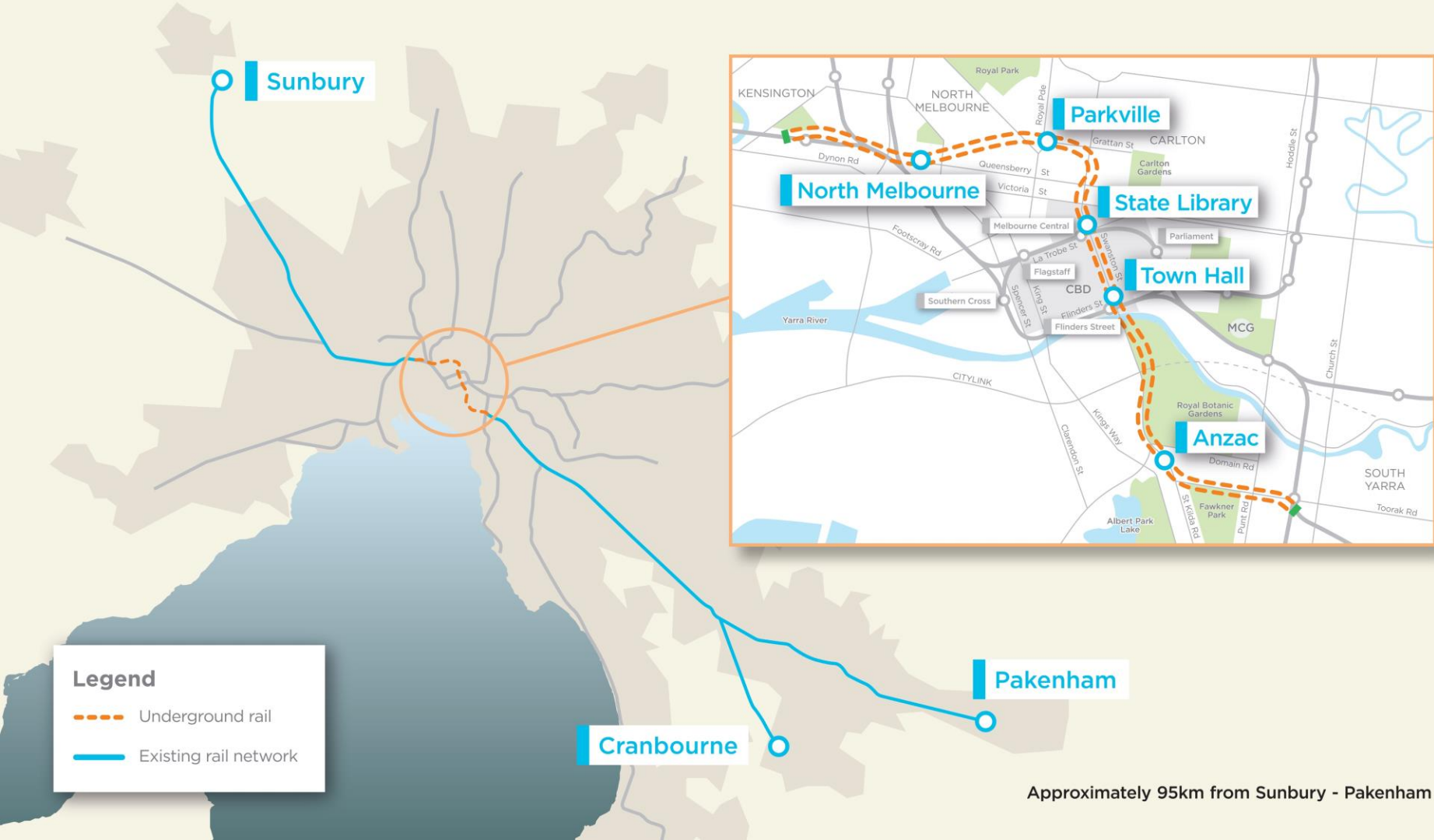
Eastern Portal

Cranbourne / Pakenham Line

# METRO TUNNEL PROJECT

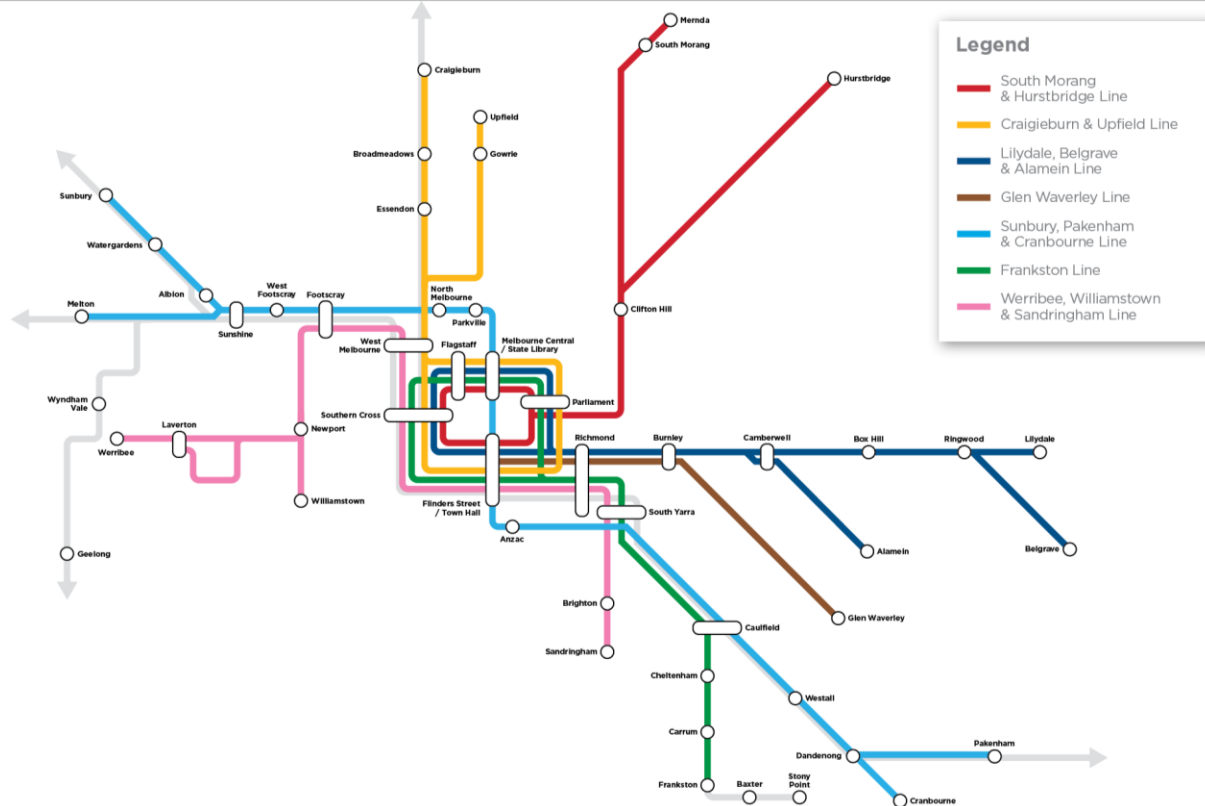
The existing 'North Melbourne' station will be renamed West Melbourne.





Approximately 95km from Sunbury - Pakenham

# RAIL NETWORK MASTER PLAN



# KEY PROJECT ELEMENTS





# MORE TRAINS, MORE OFTEN

Roll out of

**65 new**

High Capacity  
Metro Trains



Around

**300**

platform screen doors across  
the new Metro Tunnel stations



Up to



**24 trains**

per hour in each direction

Nearly

**60km**

of high capacity signalling  
for the Sunbury and  
Cranbourne-Pakenham lines



# HIGH CAPACITY METRO TRAINS

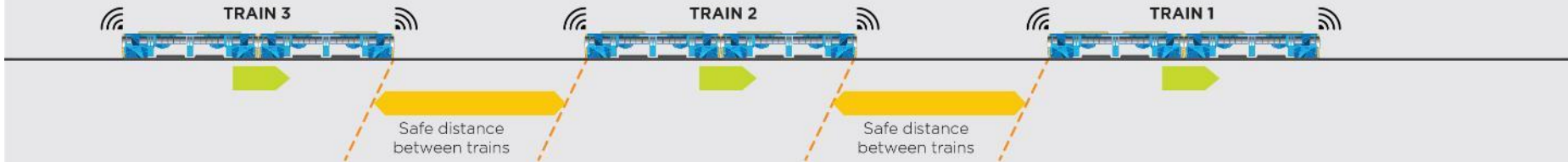


# HIGH CAPACITY SIGNALLING

## Existing signalling system



## Moving block signalling





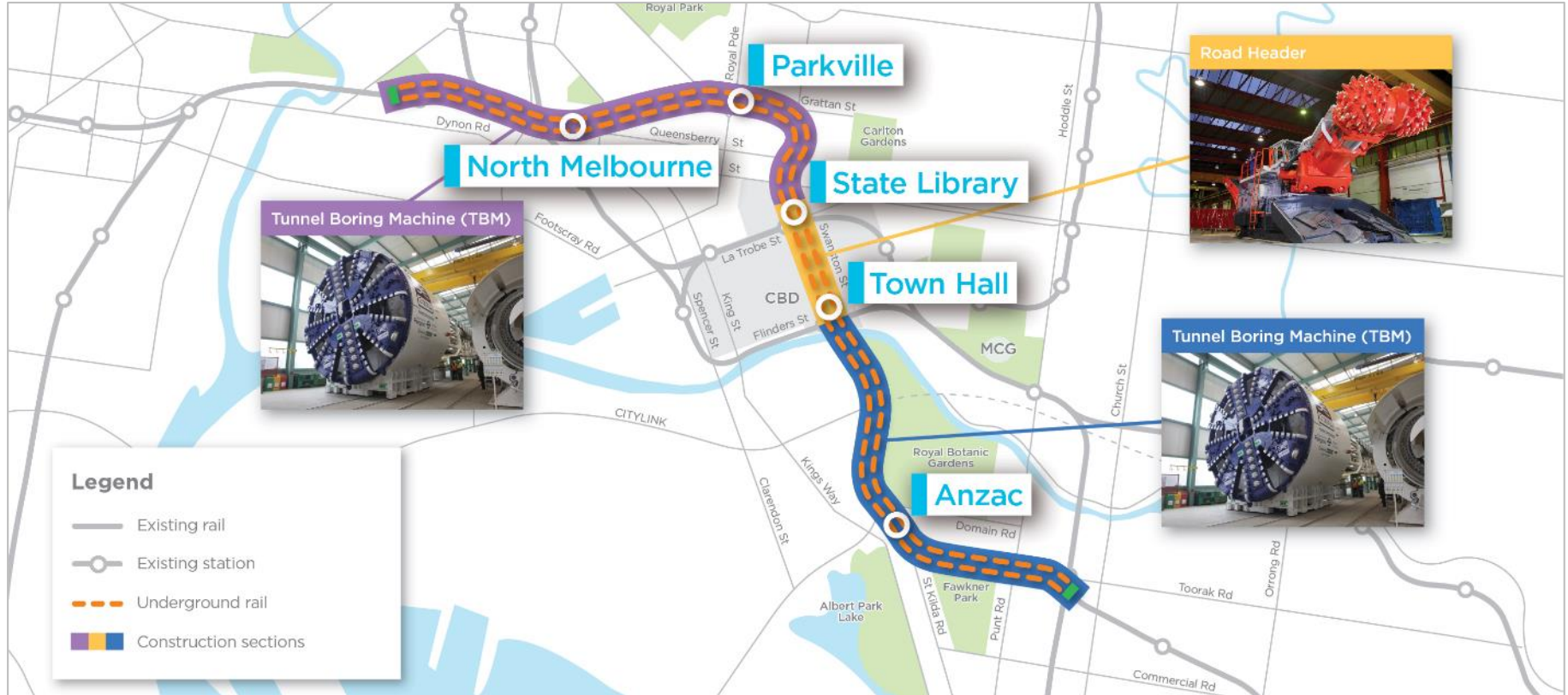
# PLATFORM SCREEN DOORS



# METRO TUNNEL CONSTRUCTION PROGRESS



# SIMULTANEOUS CONSTRUCTION



# KENSINGTON (WESTERN TUNNEL ENTRANCE)



# KENSINGTON TUNNEL ENTRANCE





# NORTH MELBOURNE

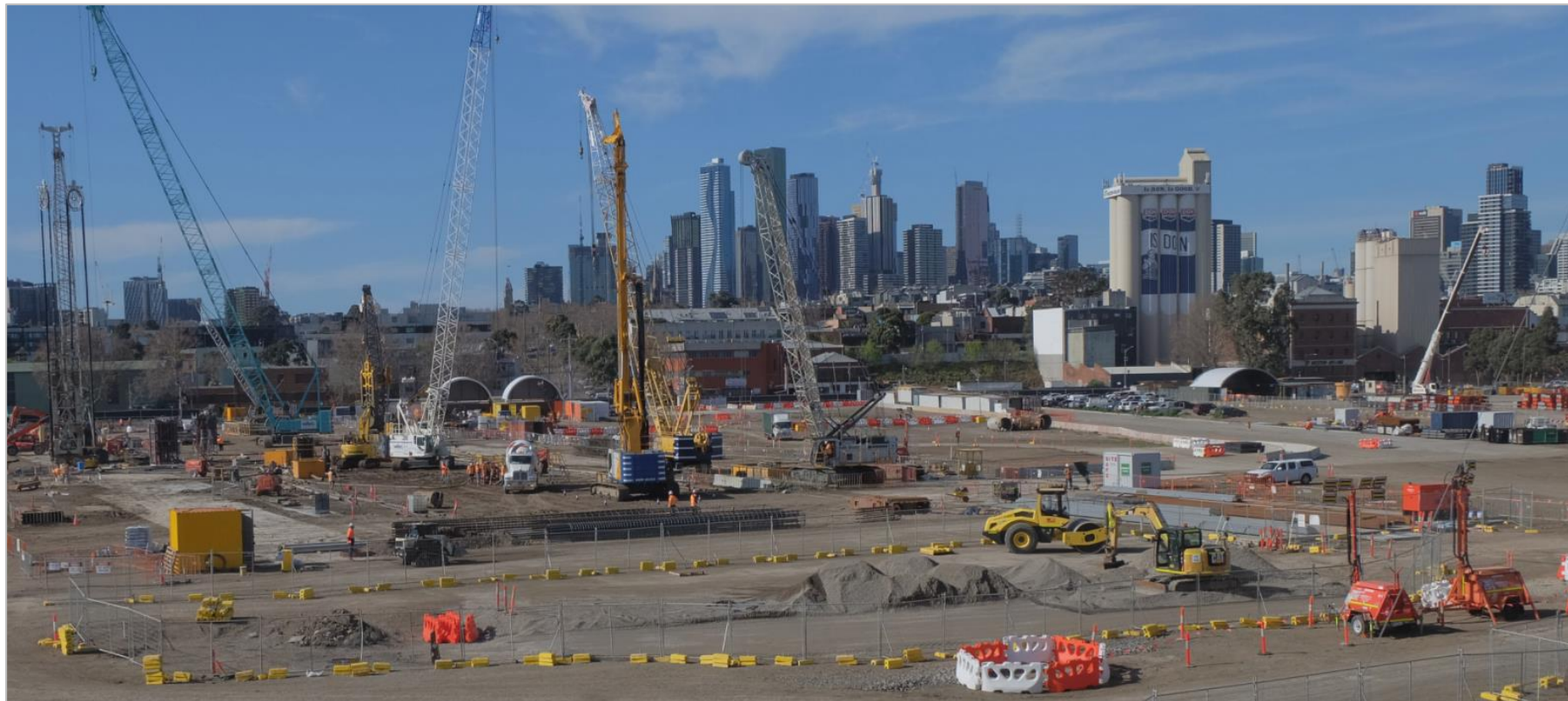


# NORTH MELBOURNE STATION





# WORKS PROGRESSING



# NORTH MELBOURNE STATION





# ARDEN URBAN RENEWAL PRECINCT



**PARKVILLE**





# PARKVILLE STATION





# WORKS IN GRATTAN STREET





# PARKVILLE STATION



**STATE LIBRARY**





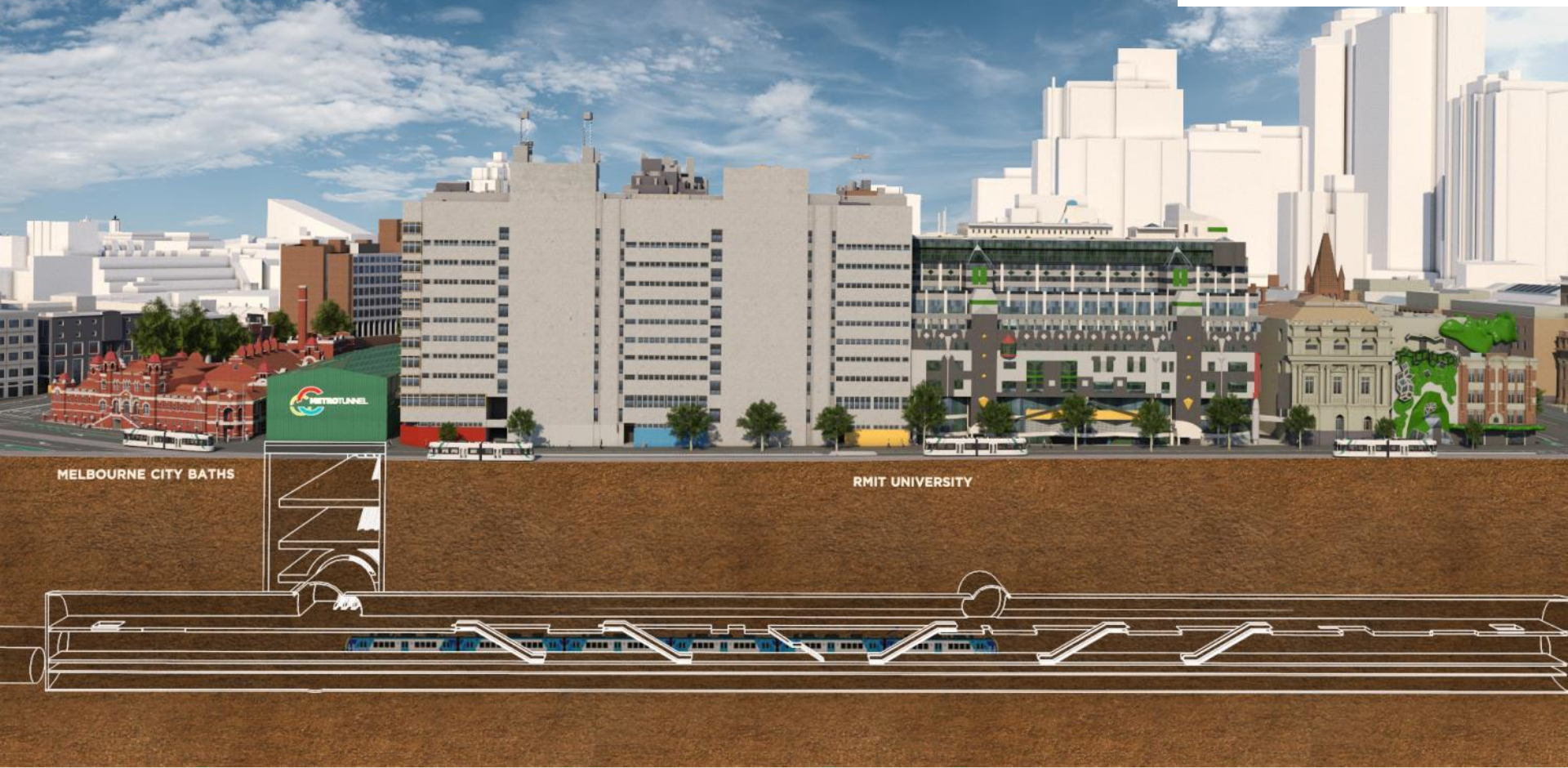
# STATE LIBRARY STATION





Indicative image only

STATE LIBRARY



# ACOUSTIC SHEDS – FRANKLIN & A'BECKETT STREETS





# 24/7 DIGGING INSIDE THE SHEDS



# 24/7 DIGGING INSIDE THE SHEDS





# DEMOLITION AT STATE LIBRARY





# ARCHAEOLOGY DIGS



# STATE LIBRARY STATION



# TOWN HALL



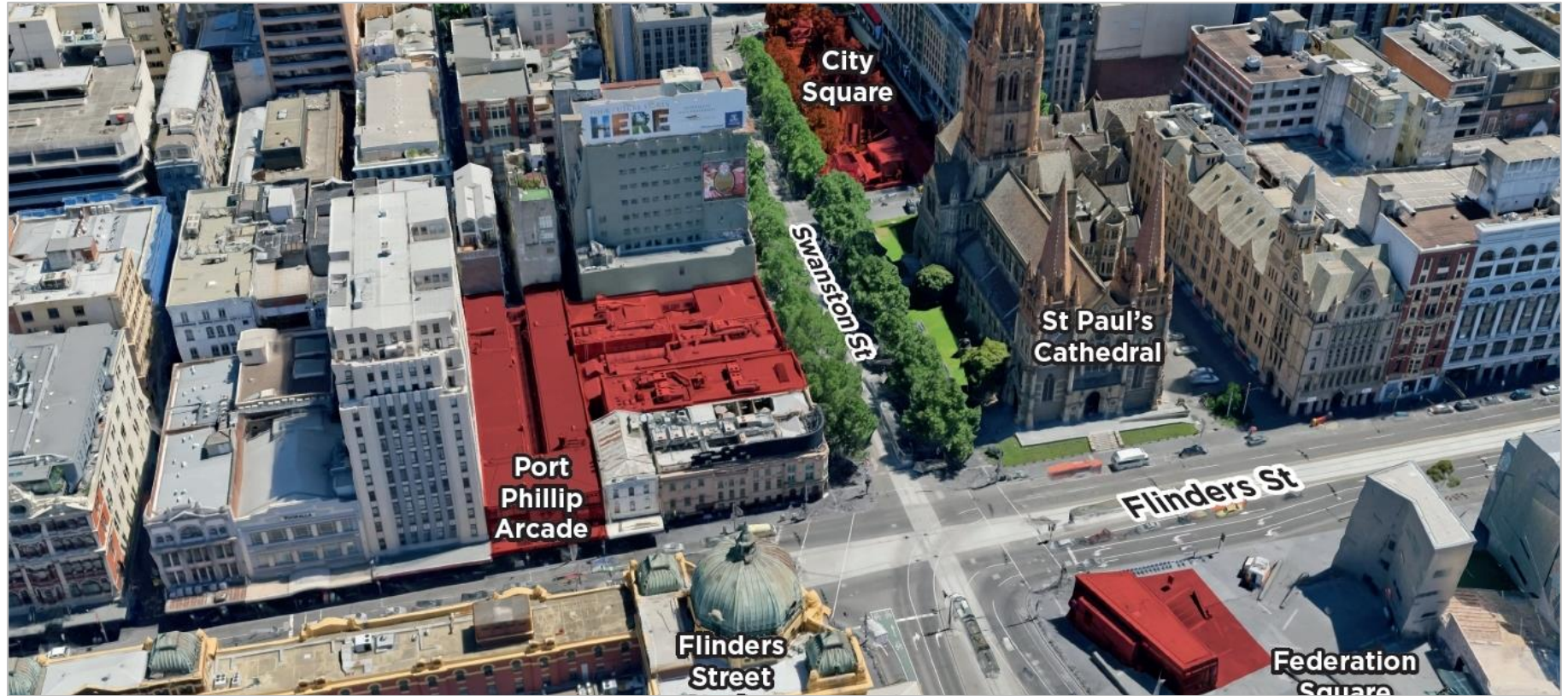


# TOWN HALL STATION





# DEMOLITION AT TOWN HALL



# CITY SQUARE TRANSFORMED





# ENGINEERING CHALLENGES



# PREPARING FOR TOWN HALL STATION



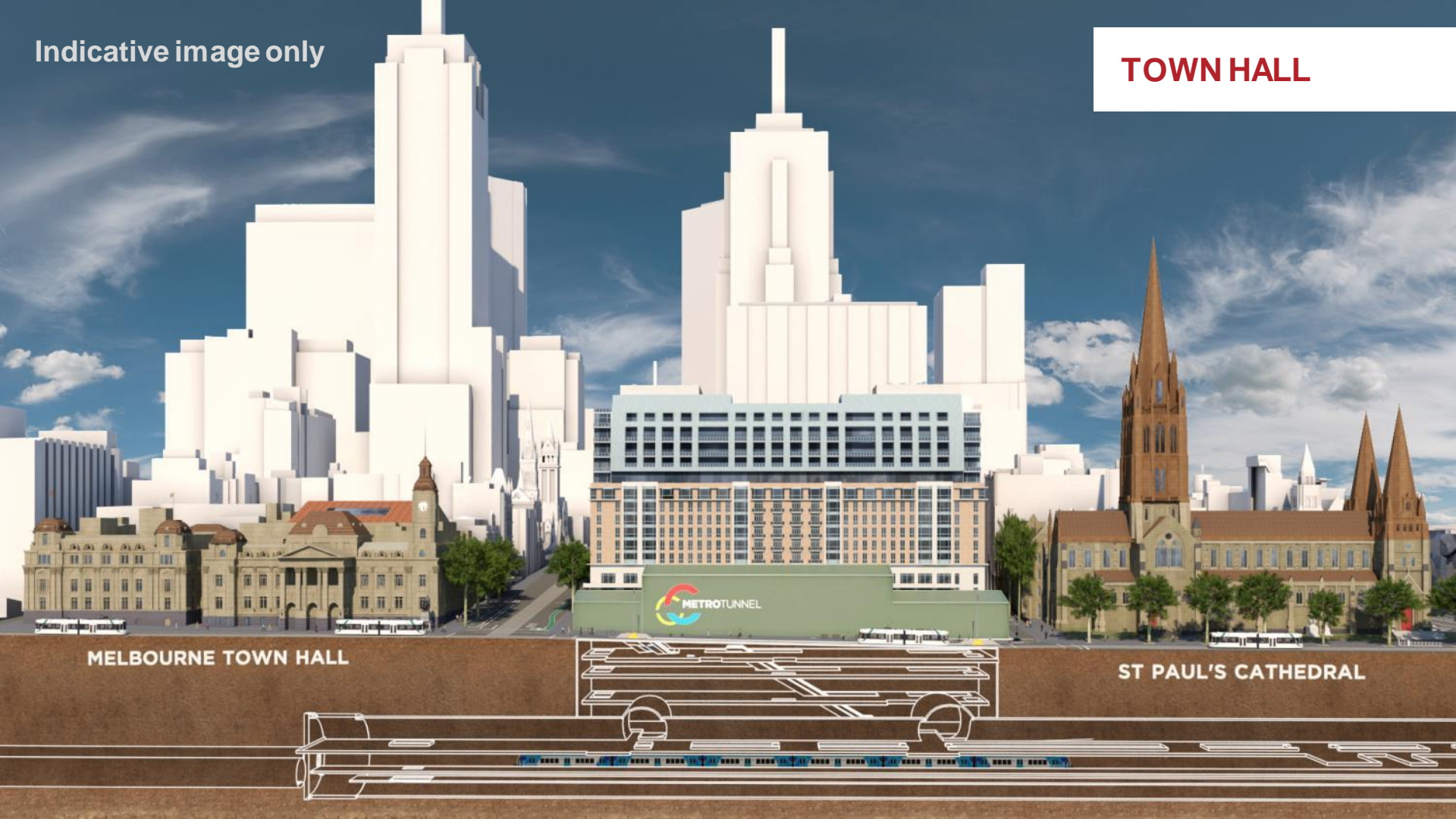


# ARCHAEOLOGY DIGS



Indicative image only

## TOWN HALL





# TOWN HALL STATION CONCOURSE





# TOWN HALL STATION PLATFORM



# TOWN HALL STATION



CONCEPT IMAGE



# FEDERATION SQUARE WORKSITE

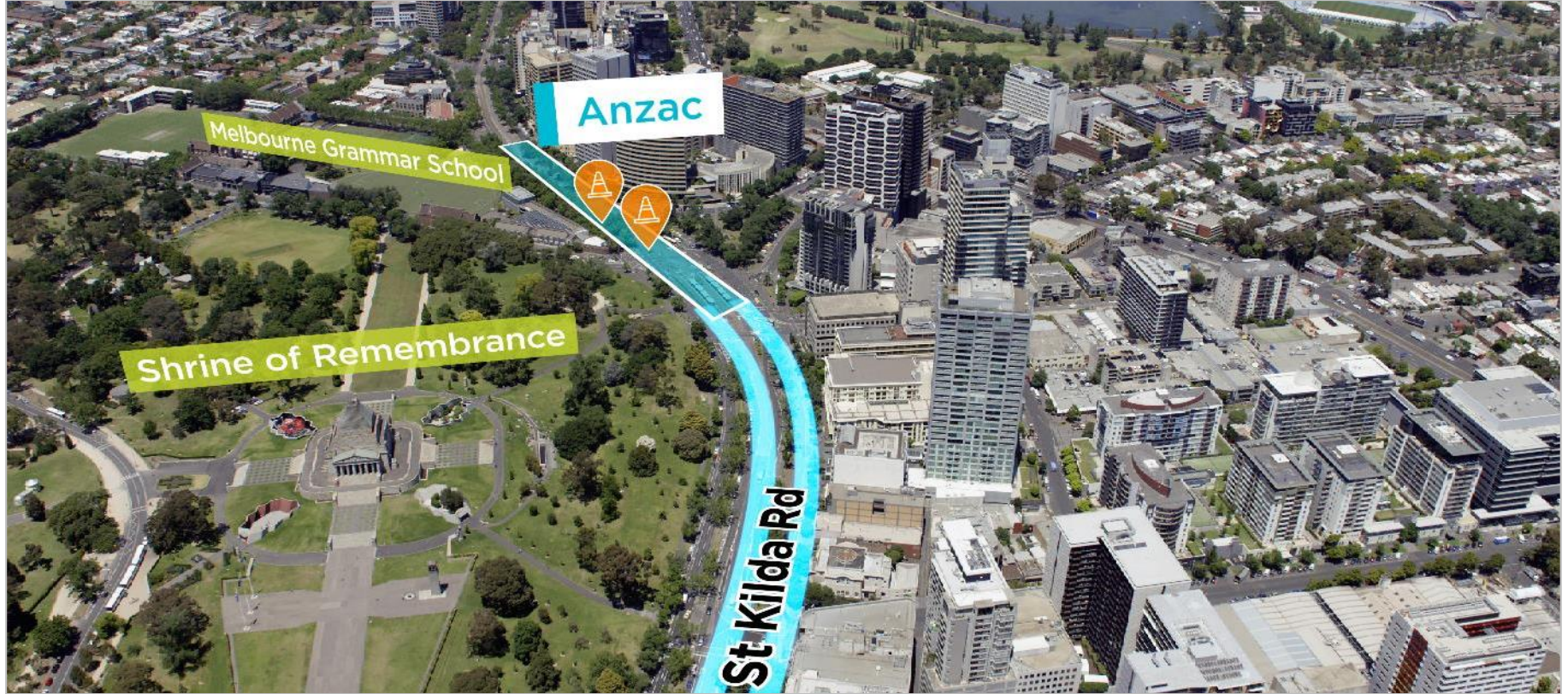




**ANZAC**



# ANZAC STATION





# TRAM & ROAD REALIGNED FOR STATION WORKS





# ANZAC STATION CONSTRUCTION



# ANZAC STATION ENTRANCE





# **SOUTH YARRA (EASTERN TUNNEL ENTRANCE)**



# SOUTH YARRA – JULY RAIL WORKS

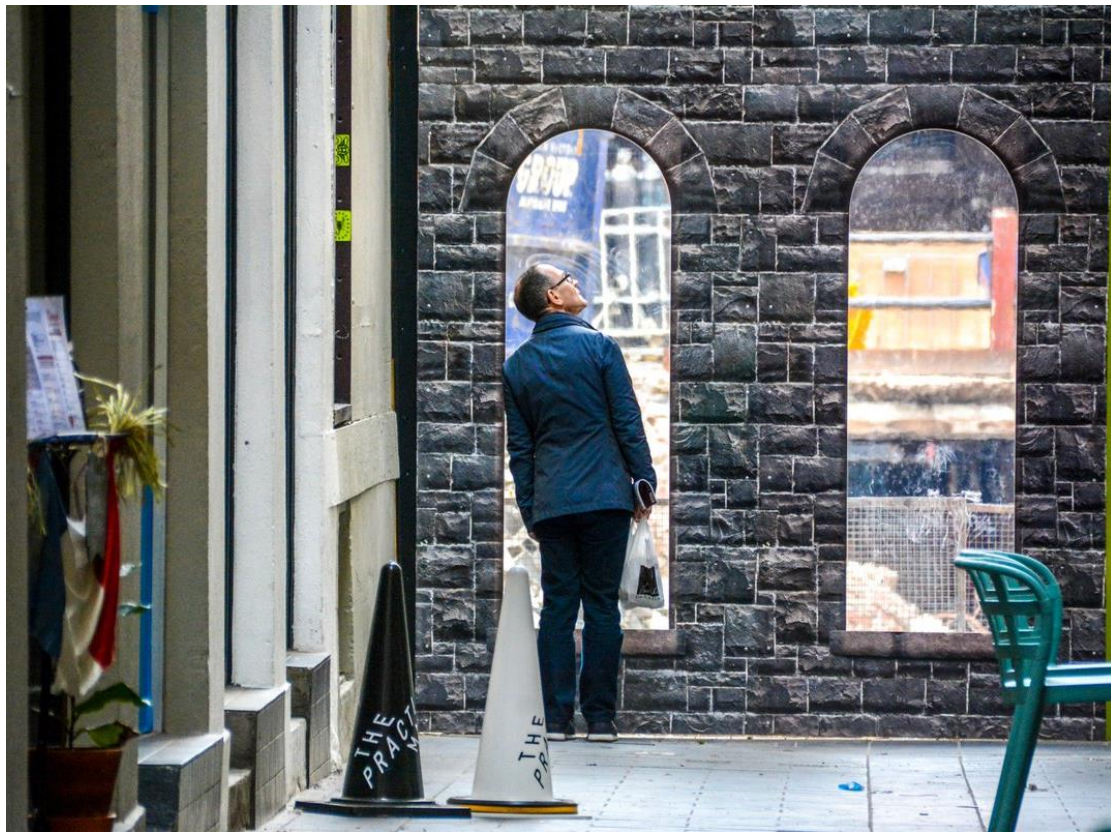




# SUPPORTING BUSINESSES & CITY ACTIVATION



# SUPPORTING BUSINESSES





# ENGAGING THE PUBLIC



# MAJOR EVENTS – WHITE NIGHT





# REGIONAL RAIL REVIVAL



# REGIONAL RAIL REVIVAL

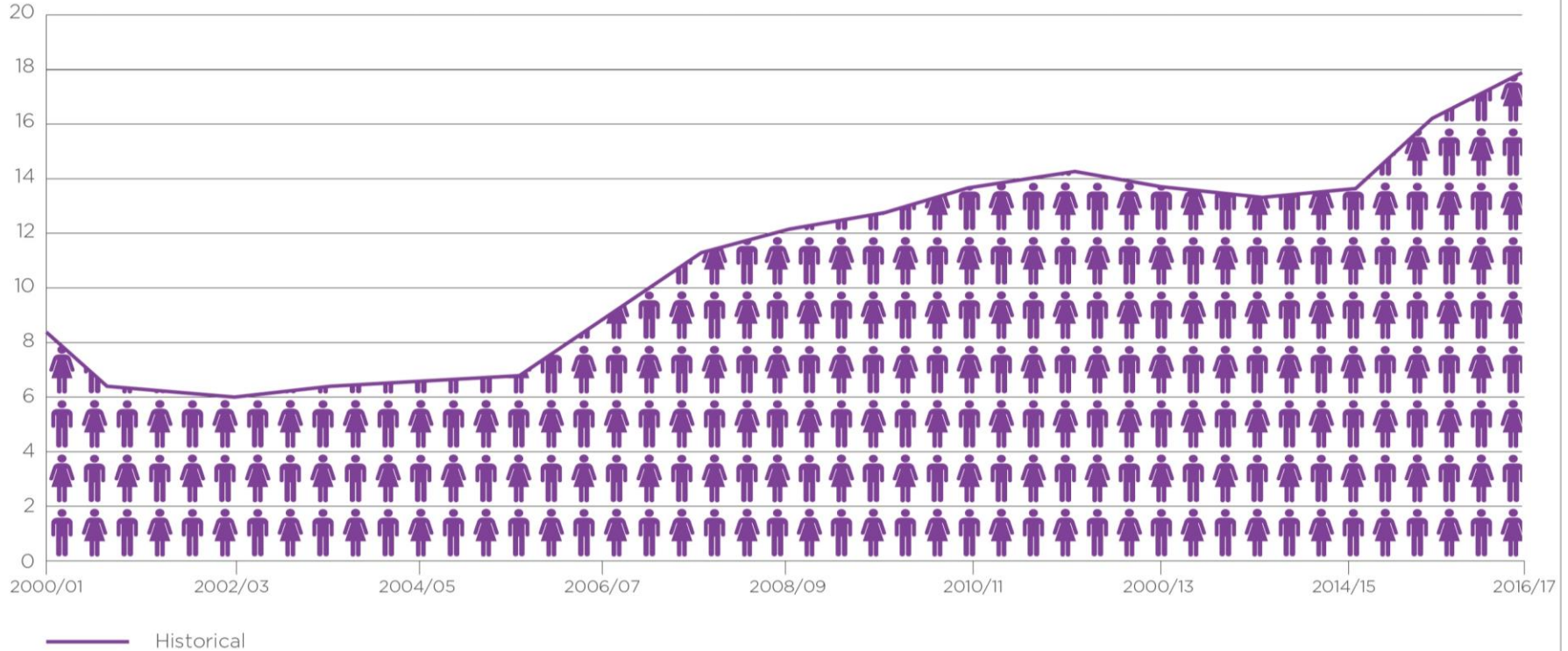


- \$1.75 billion program
- Joint initiative of Australian and Victorian governments
- Upgrading every regional passenger line in Victoria
- Deliver more frequent and reliable train services
- Will create more than 1,000 jobs
- More opportunities for regional Victorians to access jobs, education, healthcare and housing



# REGIONAL TRAIN PATRONAGE

Patronage millions

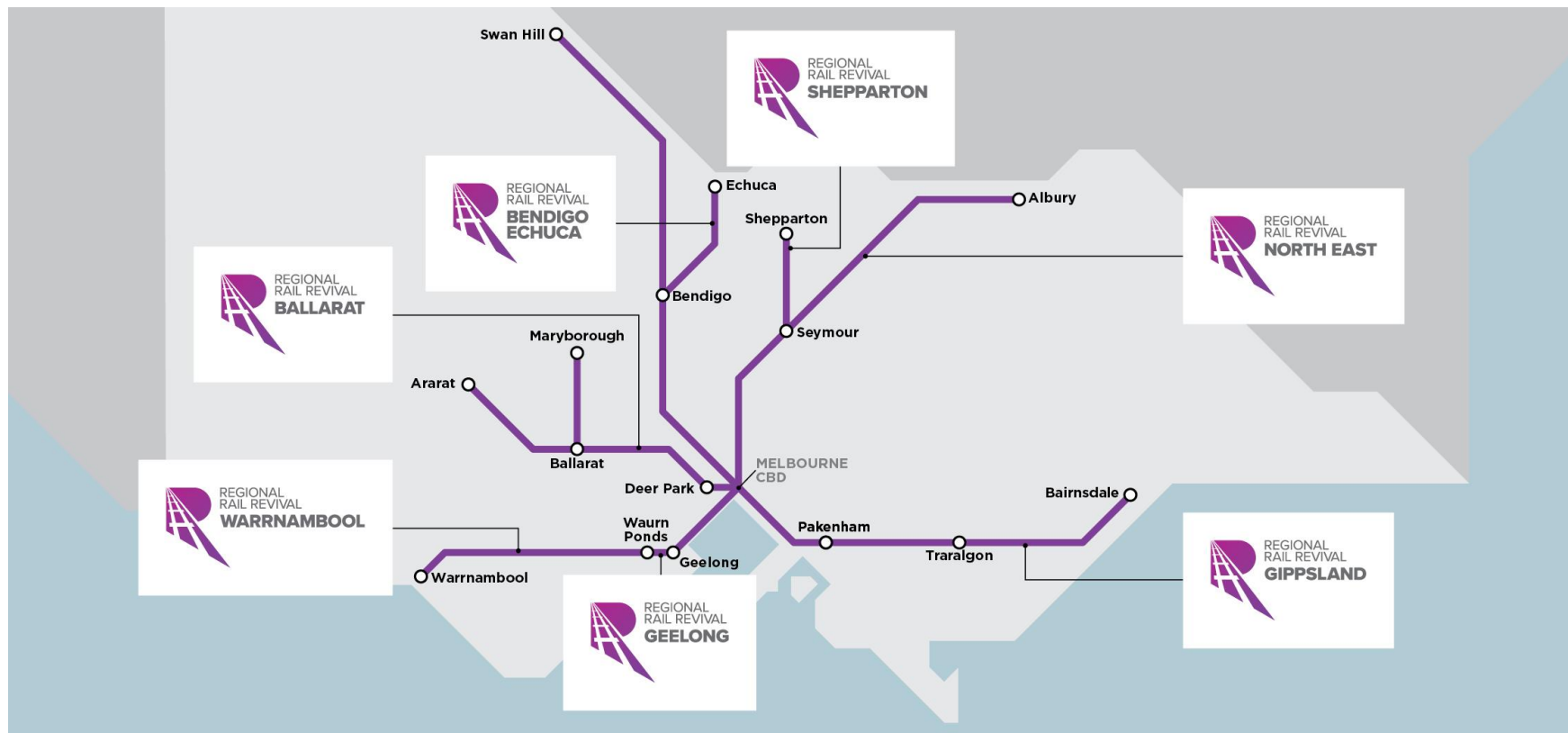


# REGIONAL RAIL REVIVAL WILL DELIVER

- Infrastructure for more frequent and reliable train services
- New and upgraded stations, track duplication, upgraded level and pedestrian crossings
- More than 1,000 jobs, including at least 10% for Victorian apprentices, trainees and engineering cadets
- Opportunities for local suppliers to create jobs, develop industry skills and grow local economies, through the Victorian Government's Local Jobs First Policy
- Better connectivity between regional centres across Victoria

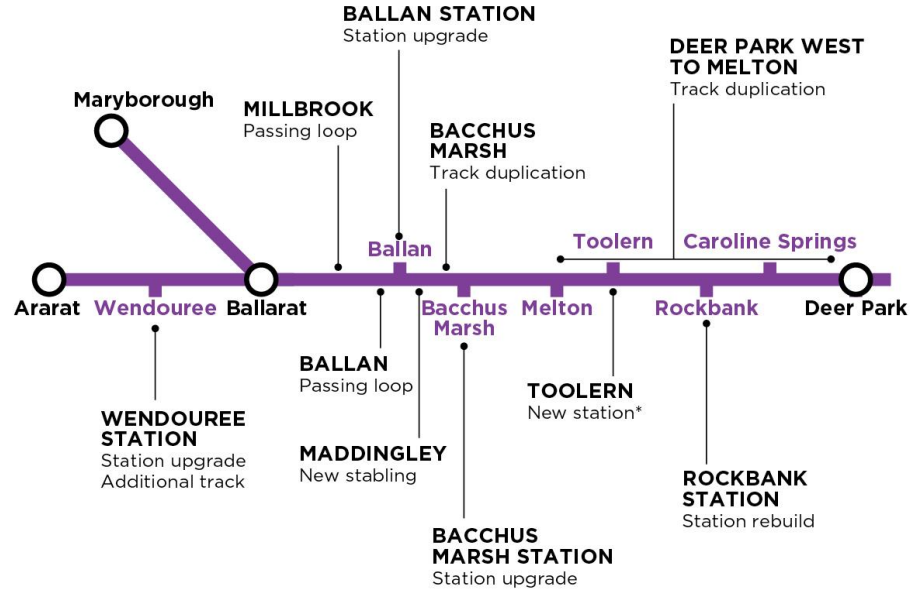


# REGIONAL RAIL REVIVAL



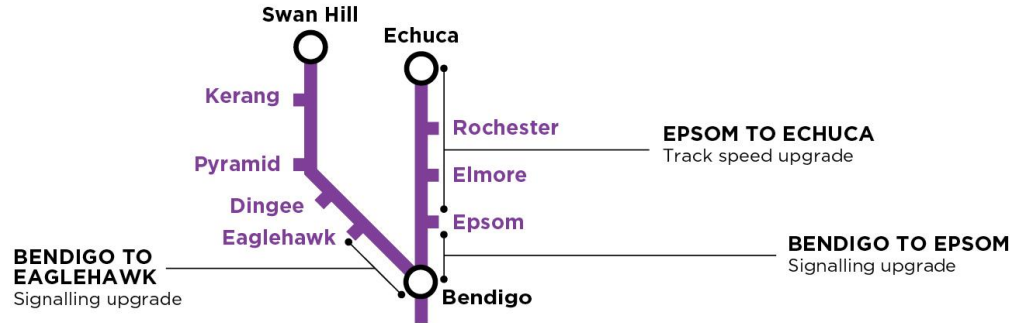


# BALLARAT LINE UPGRADE



\* Separately funded under the Victorian Government's Growth Area Infrastructure Contribution

# BENDIGO AND ECHUCA LINE UPGRADE



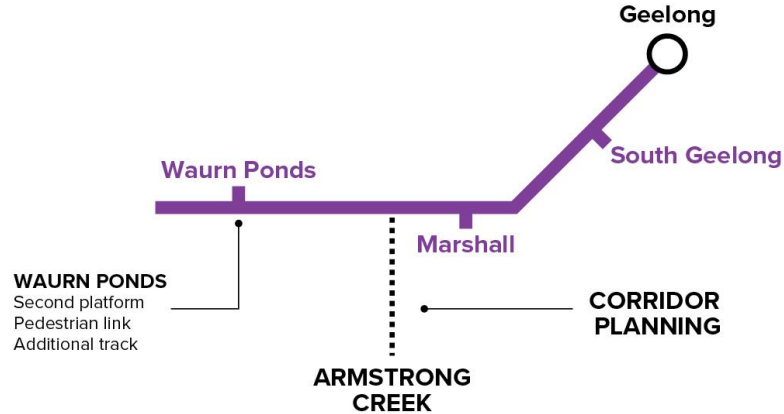
# BENDIGO AND ECHUCA LINE UPGRADE



BENDIGO STATION



# GEELONG LINE UPGRADE

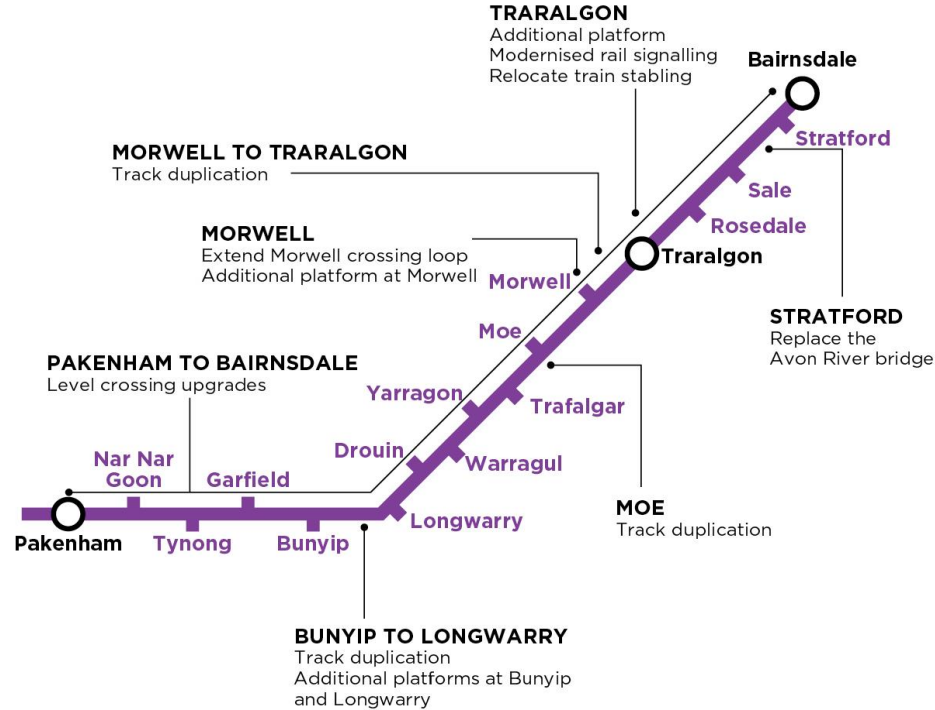


# GEELONG LINE UPGRADE



WAURN PONDS STATION

# GIPPSLAND LINE UPGRADE



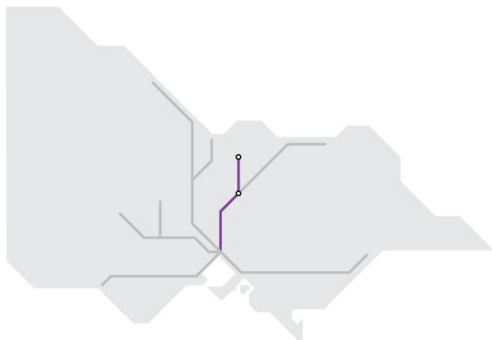


# GIPPSLAND LINE UPGRADE



TRARALGON STATION

# SHEPPARTON LINE UPGRADE



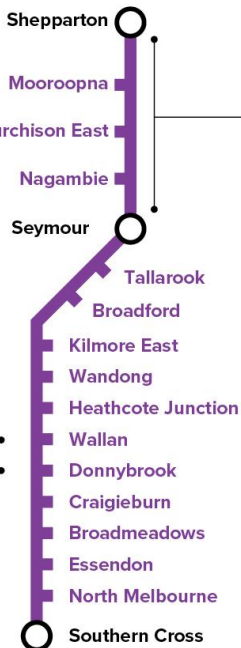
## STAGE 1

Stabling upgrade in Shepparton to support extra services

## STAGE 1

Crossing loop on the line to enable trains to pass each other

## STATION UPGRADES



## STAGE 1

Extra coach services for better transport connections

## STAGE 2

Platform extensions at Shepparton, Mooroopna, Murchison East and Nagambie to suit VLocity trains

## STAGE 2

Level crossing upgrades at 54 locations between Seymour and Shepparton

## STAGE 2

New stabling for VLocity trains at or near Shepparton

## STAGE 2

Signalling and track upgrades to enable trains to travel at upto 130km/h

## STAGE 3

Business case to finalise the scope and costs of delivering nine daily return services between Shepparton and Melbourne

The Shepparton Line Upgrade is funded by the Victorian Government

# SHEPPARTON LINE UPGRADE



SHEPPARTON STATION



# WARRNAMBOOL LINE UPGRADE

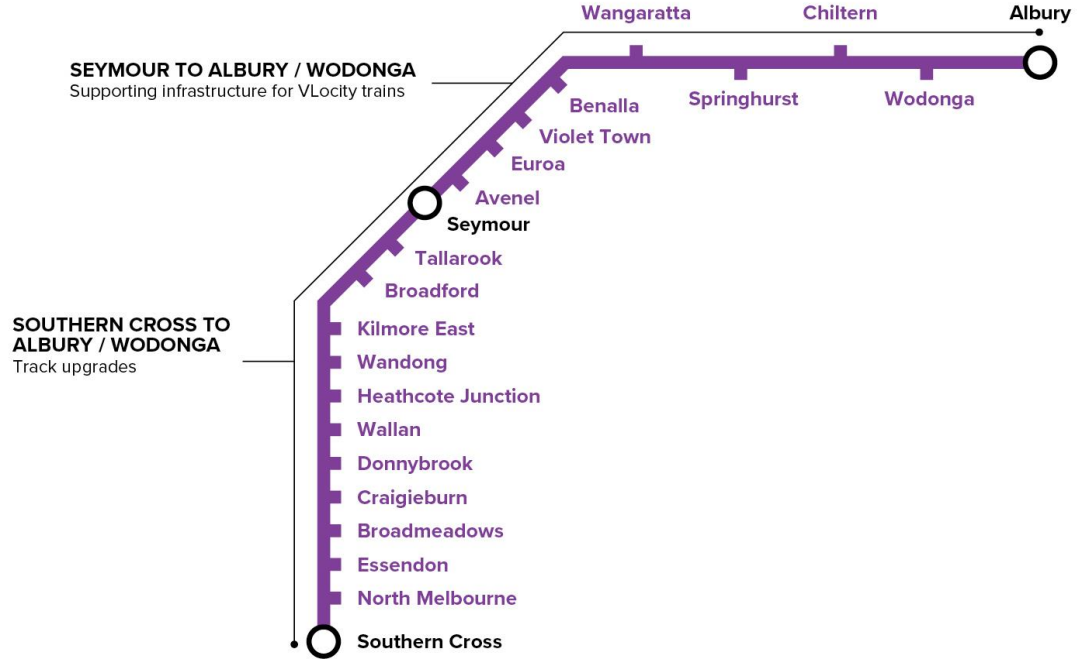


# WARRNAMBOOL LINE UPGRADE



WARRNAMBOOL STATION

# NORTH EAST LINE UPGRADE

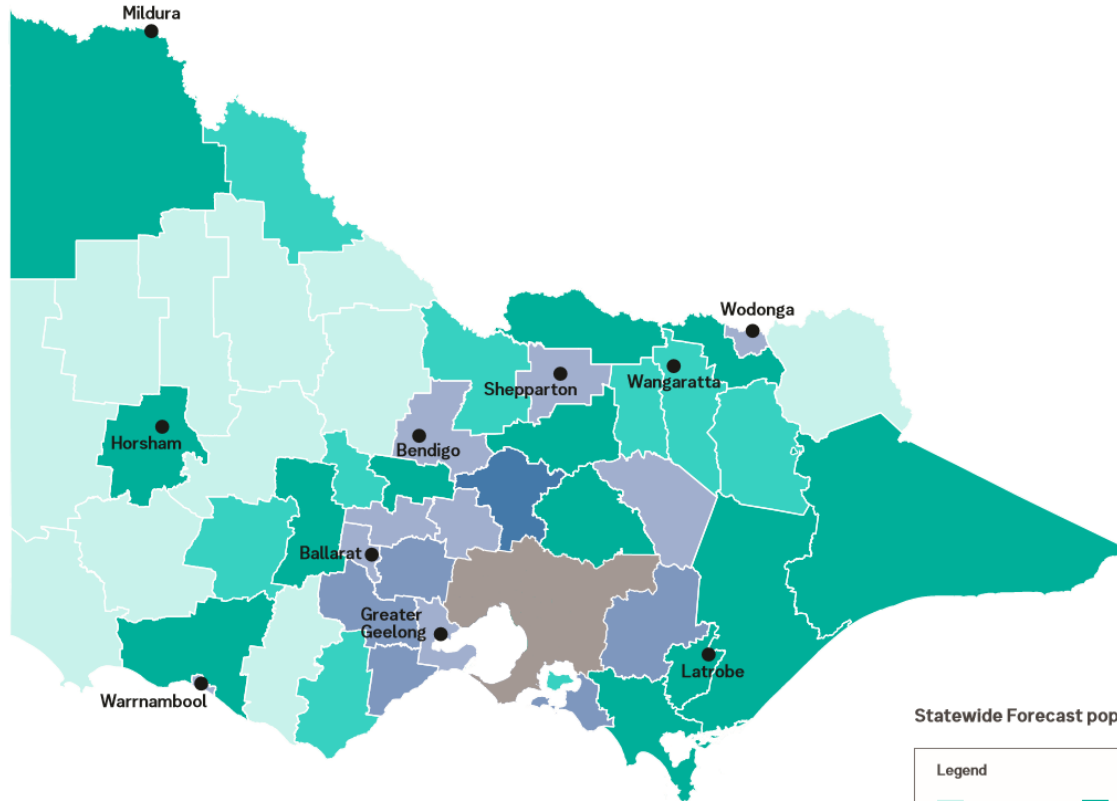




# MELBOURNE AIRPORT RAIL LINK

The background of the slide features a large teal triangle on the left. On the right side, there is a red triangle pointing downwards, which is partially overlaid by a larger teal triangle pointing upwards. Two white lines intersect to form an 'X' shape, separating the teal and red areas.

# POPULATION GROWTH TO 2031

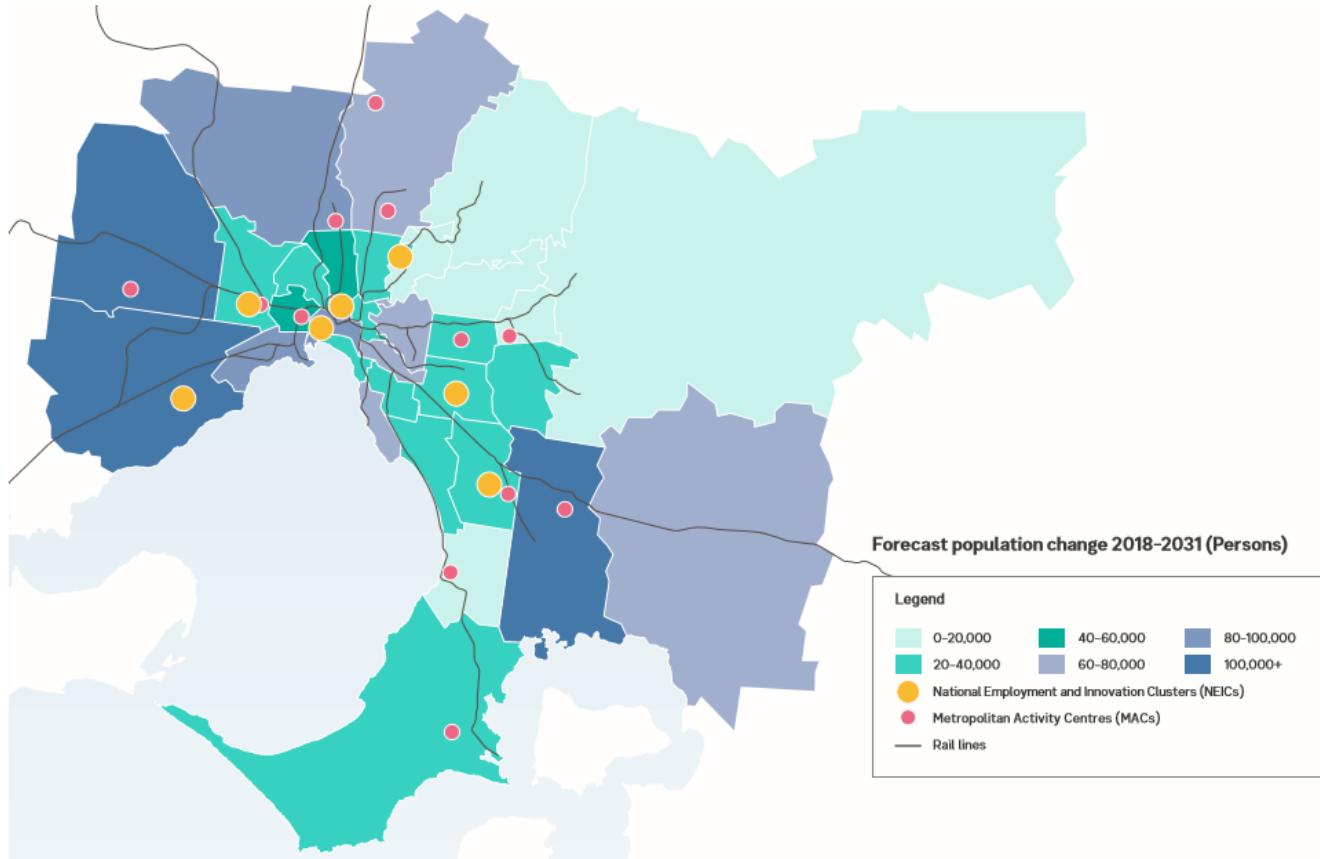


Statewide Forecast population change (%)

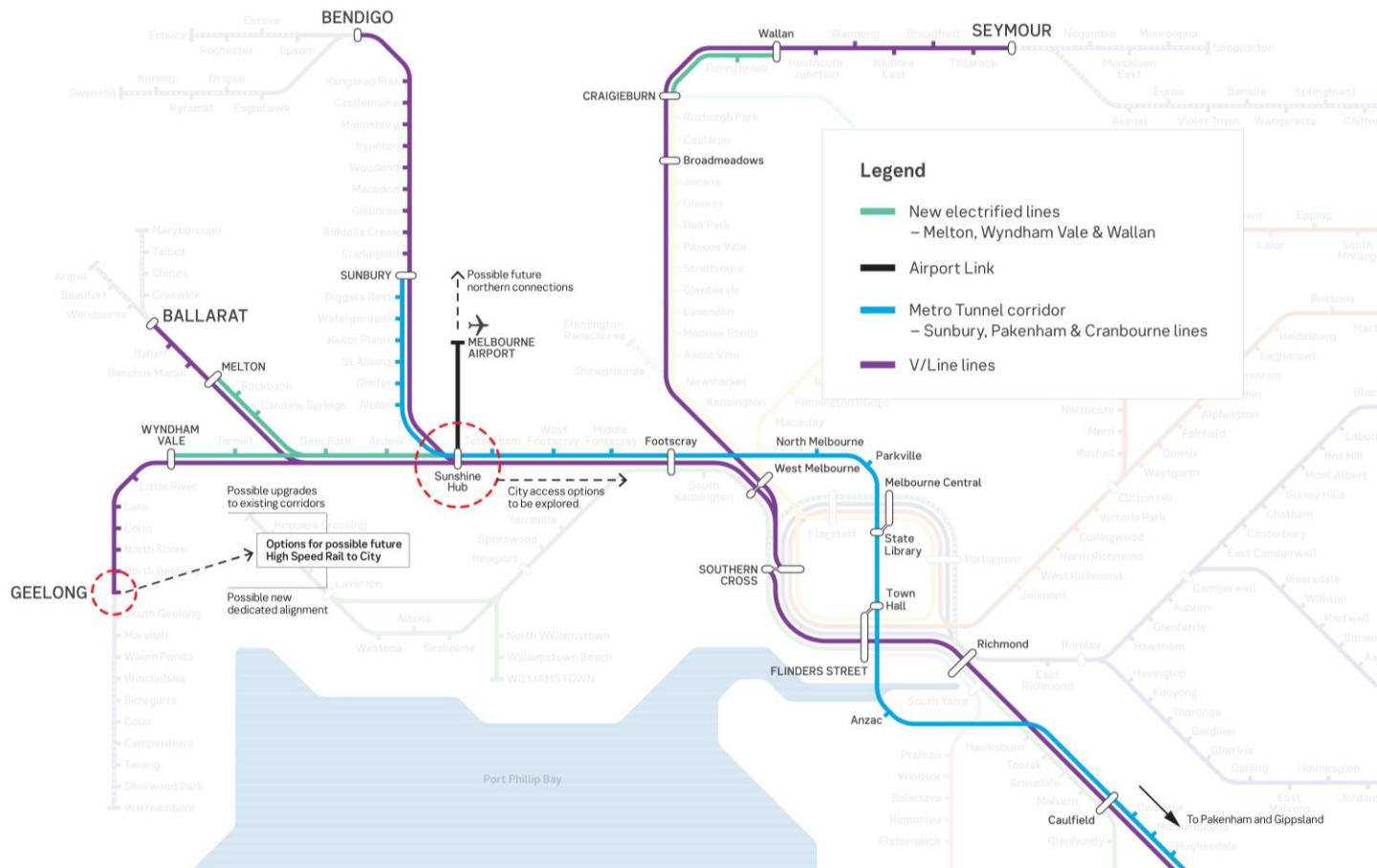
Legend



# MELBOURNE'S POPULATION GROWTH TO 2031







# MELBOURNE AIRPORT

- Key contributor to Victoria's economic growth
- 460,000 tonnes of freight
- Experiencing strong passenger growth
- 20,700 direct jobs and 20,900 jobs in surrounding area

35.2 million in 2016/17



67+ million in 2038

\* Melbourne Airport passenger forecast

# INTERNATIONAL AIRPORTS

Major International Airports							
	Sydney Kingford Smith Airport	New York JFK Airport	Singapore Changi Airport	Melbourne	Paris Charles De Gaulle Airport	Hong Kong International Airport	London Heathrow Airport
Approx current annual air passengers	43 million	59 million	62 million	35 million (68 million in 2038)	69 million	73 million	78 million
Transport Infrastructure	1 freeway 1 rail line	2 freeways 2 rail lines	1 freeway 1 rail line	1 freeway	2 freeways 2 rail lines	1 freeway 1 rail line	2 freeways 3 rail lines



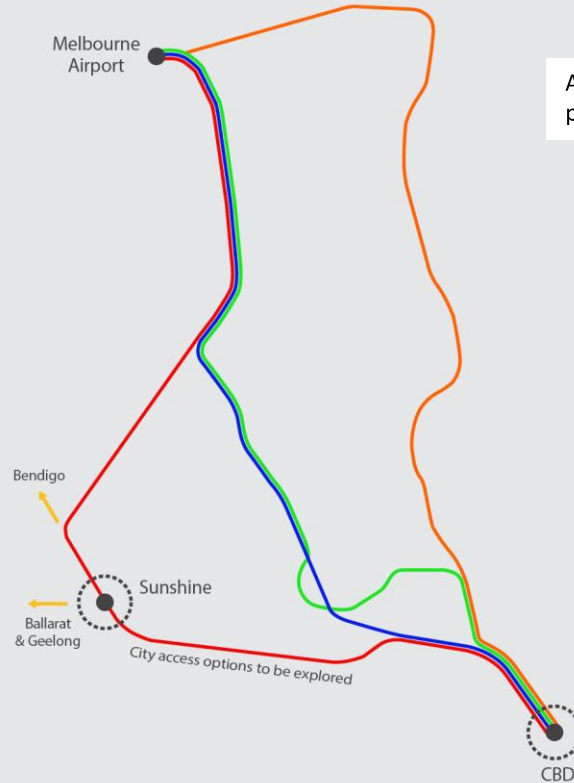
# ROUTE OPTIONS

Routes are a combination of surface rail and tunnel

## Legend

- Sunshine Route
- Maribyrnong Route
- Flemington Route
- Craigieburn Route

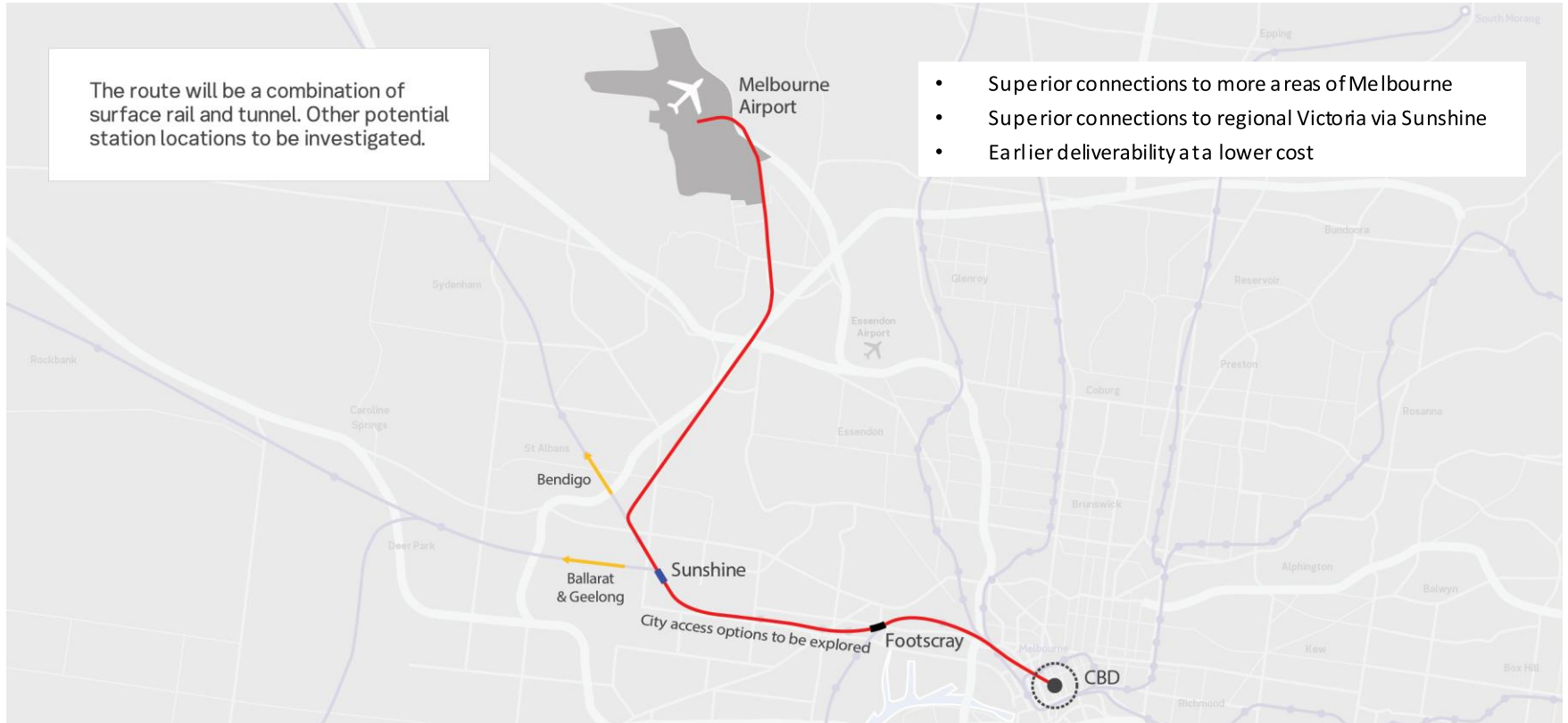
Assessment of route options built on earlier planning studies from 2002 and 2012



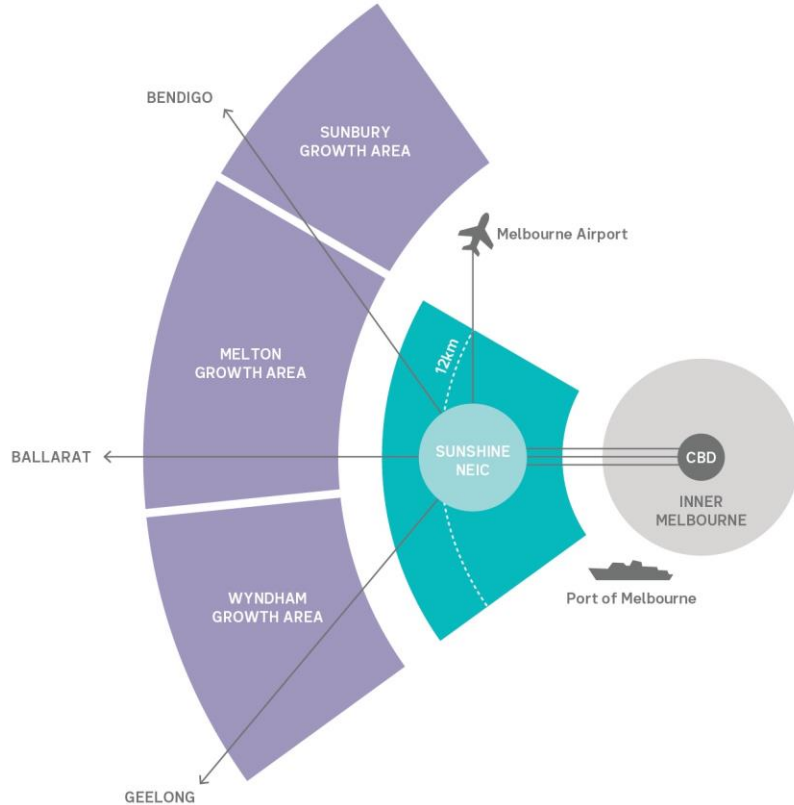
# SUNSHINE ROUTE

The route will be a combination of surface rail and tunnel. Other potential station locations to be investigated.

- Superior connections to more areas of Melbourne
- Superior connections to regional Victoria via Sunshine
- Earlier deliverability at a lower cost



# SUNSHINE: STRATEGIC HUB





# NEXT STEPS



**KEEPING MELBOURNE MOVING**

The background of the slide features a large teal triangle on the left. On the right side, there is a complex geometric pattern composed of several overlapping triangles in teal and red, separated by thin white lines. The overall design is modern and minimalist.

# KEY ROAD CHANGES

**JAN 2017**

**Northern end of CBD**

Road closures at Franklin Street and A'Beckett Street to facilitate shaft construction

**FEB 2018**

**Grattan Street**

Road closure at Grattan Street

**SEP/OCT 2018**

**Flinders Street**

Reduced to one lane of traffic turning left from Flinders Street to St Kilda Road (Princes Bridge)

**JUN/JUL 2017**

**Domain Precinct**

Major tram works on St Kilda Road to reroute 58 tram from Domain Road to Toorak Road West. Closure of Domain Road.

**FEB 2018**

**St Kilda Road**

Reduced to one lane of traffic each direction, with tram and cycling access maintained

**UNTIL 2023**

**Various Roads**

Other periodic road impacts continuing with construction until 2023



# UPGRADING ALTERNATIVE ROUTES



# MONITORING CHANGES



# KEEPING MELBOURNE MOVING

